



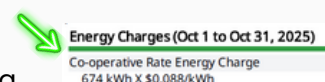
## Co-operative Rate 2026

We are pleased to announce that we are able to hold our energy rates for 2026. Our Board of Directors has approved the 2026 Co-operative Rate of 8.80¢/kWh, as well as the 2026 Microgeneration Rate of 30¢/kWh. We are proud to provide stability for our Members as we continue delivering safe, reliable, and affordable power.

Members currently on the Co-operative Rate with the “auto renew” option selected will automatically stay on the Co-operative Rate.

Members without the auto-renew option will default to the Rate of Last Resort (RoLR) if a new contract is not received. RoLR will continue to be 13.31¢/kWh for 2026.

If you're unsure which rate you are on, you can find it on your bill under Energy Charges (see example photo to the right). You can also contact us at 780-398-2000 or [contact@npprea.ca](mailto:contact@npprea.ca) for assistance.



To update or submit a Co-operative Rate Form, visit our website: [npprea.ca/online-forms](https://npprea.ca/online-forms)

## Member Benefits with Advanced Metering Infrastructure



We will be replacing existing meters with new AMI meters across our service area, as our current meters are nearing the end of their life cycle. AMI technology is now the industry standard, and will help North Parkland Power Co-op serve our Members with increased reliability and efficiency. You may notice our Powerline Technicians at your site as we complete the installation of our new AMI meters.

These new meters are helping us build a stronger, more resilient grid.

AMI meters provide detailed usage data that helps us identify locations in our distribution system that may require upgrades, contributing to a more robust and efficient system. Enhanced outage data also allows us to pinpoint specific service areas needing inspection, leading to faster response times and improved reliability.

## Power Co-ops of Alberta

We're proud to be part of [Power Co-ops of Alberta](https://powercoopsofAlberta.com) – six co-ops, one promise: keeping power fair, reliable, and locally owned for communities across Alberta.

Learn more at <https://powercoopsofAlberta.com>.



For More Information:

Please feel free to call the office toll free at: 1-866-398-2001 or 780-398-2000

For outage updates and other information related to your service or the system, please visit us at [www.npprea.ca](https://www.npprea.ca) and “Like” us on Facebook: @npprea

# Changes in Distribution Rates

The continued rising costs of supplies and services has resulted in the need to increase of the electric Distribution rates. While every effort was made to keep costs down unfortunately there will be to be a 5% increase effective January 1, 2026.

Below is the new rate schedule for the new 2026 Distribution Rates. Please refer to our website for a complete listing of all rates. <https://www.npprea.ca/members>

Distribution Daily Rates (effective January 1, 2026)				
Rate 100 Joint Rural Service - Shared transformer ≤80 Acres (non-agricultural activity)				
Daily Operating	\$1.0053			
All kWh Delivered	\$0.0323			
Rate 150 Acreage Service ≤80 Acres (non-agricultural activity)				
Daily Operating	\$1.3712			
All kWh Delivered	\$0.0348			
Rate 200 Small Rural				
Daily Operating	\$1.8752			
All kWh Delivered	\$0.0475			
Rate 250 Large Rural Service (Idle Charge \$1.69008/day)				
Capacity	15 kVA	25 kVA	37.5 kVA	50 kVA
Daily Operating	\$4.3765	\$6.9504	\$10.1680	\$13.3857
Rate 275-1 Rural Demand Service (Capacity up to 150 kVA)				
Operating Variable		\$ .3617/kva/day	Minimum (3kVA) or the > of current read, 65% of highest previous 12 month historical demand	
Daily Site Charge		\$0.5828		
Rate 275-2 Rural Demand Service (Capacity over 150 kVA)				
Operating Variable		\$ .3077/kva/day	Minimum (10 kVA) or the > of current read, 65% of highest previous 12 month historical demand	
Additional /kVa Capacity/day up to 50 kVa		\$0.3077		
Additional /kVa Capacity/day greater than 50 kVa		\$0.1392		
Rate 325 AG/Irrigation/Seasonal (Idle Charge \$1.3273 - includes up to 150kWh per mo.)				
Capacity	15 kVA	25 kVA	37.5 kVA	50 kVA
Daily Operating	\$5.7059	\$9.0615	\$13.2566	\$17.4518
Rate 350-1 AG/Irrigation/Seasonal Demand Service (Capacity up to 150 kVA)				
Operating Variable		\$ .3722/kva/day	Minimum (3kVA) or the current read if > than Minimum	
Daily Site Charge		\$0.5933		
Rate 350-2 AG/Irrigation/Seasonal Demand Service (Capacity over 150 kVA)				
Operating Variable		\$ .3077/kva/day	Minimum (10 kVA) or the current read greater than	
Additional /kVa Capacity/day up to 50 kVa		\$0.3077		
Additional /kVa Capacity/day greater than 50 kVa		\$0.1392		
Rate 400 General Service (Idle Charge minimum \$2.7316/day)				
Capacity		15 kVA or >		
Daily Operating	first 3kVA	\$1.0015		
Additional /kVa Capacity/day		\$0.3858		
Rate 450-1 Demand Service (Capacity up to 150 kVA)				
Operating Variable		\$ .3722/kva/day	Minimum (5kVA) or the > of current read, 80% of highest previous 12 month historical demand	
Daily Site Charge		\$0.5933		
Rate 450-2 Demand Service (Capacity over 150 kVA)				
Operating Variable		\$ .3077/kva/day	Minimum (10 kva) or the > of current read, 80% of highest previous 12 month historical demand	
Additional /kVa Capacity/day up to 50 kVa		\$0.3077		
Additional /kVa Capacity/day greater than 50 kVa		\$0.1392		
Rate 500 Streetlight Service				
Daily Operating	\$1.0314/fixture/day plus variable \$0.000549/watt/day			
Rate 550 Yardlight Service				
Daily Operating	\$0.4139			
*For member use only - Not to be re-distributed by social media or other means				

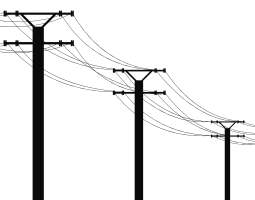
## Holiday Office Closures

Please note that the North Parkland Power Co-op office will be closed **Tuesday, December 23, 2025** and will re-open **Monday, December 29, 2025**.

The office will also be closed on **Thursday, January 1, 2026**.

Our Powerline Techs will be available 24/7 for power outages or emergencies.

We wish all our Members a safe and enjoyable holiday season.



Please note: Complaints about contraventions of the Code of Conduct Regulation may be made to the Alberta Utilities Commission or the Market Surveillance Administrator. The Alberta Utilities Commission can be reached by contacting 1-780-427- 4903 or [consumer-relations@auc.ab.ca](mailto:consumer-relations@auc.ab.ca). The Market Surveillance Administrator can be reached by contacting 1-403-705-3181 or [compliance@albertamsa.ca](mailto:compliance@albertamsa.ca). The Alberta Utilities Commission and the Market Surveillance Administrator are independent of North Parkland Power Rural Electrification Association Ltd.