

Experience Antioch, Illinois

WHERE AUTHENTICITY MEETS OPPORTUNITY



www.antioch.il.gov/economicdevelopment

SHOP & DINE BY NATURE



School Information

Three Elementary (K-5)
One Middle (6-8) One School:
Average Class Size: 17
Avg. \$'s Spent / Student: \$12,760

Two High Schools
Average Class Size: 22
Graduation Rate: 96%
Avg. \$'s Spent / Student: \$16,414

VILLAGE OF
ANTIOCH

MAYOR - SCOTT J. GARTNER

WHY ANTIOCH?

Village of Antioch

Household Income

\$96,069*

*10% Above \$200,000, which is
20% higher than state average

Median Home Value

\$221,000

Owner - Occupied Households

75.1%**

**10% higher than state average

Total Population

14,622 (4,993 Households)

Average Resident Age

40 Years Old

Population Per Sq. Mi

1,781

Population Growth

+63% 2000 to 2020

Transportation

< 60 miles from Downtown Chicago
40 miles from BOTH O'Hare
(Chicago) and Mitchell
(Milwaukee) International Airports

Daily Traffic Count

15,700 vehicles per day :
IL Rte 173

11,500 vehicles per day :
Main St. (IL Rte 83)

Antioch, Illinois

The Antioch population increases significantly during the summer. It is located in the "heart" of the Chain-O-Lakes region, which is the busiest inland recreational waterway per acre in the United States.

The Village of Antioch covers approximately 8.1 square miles.

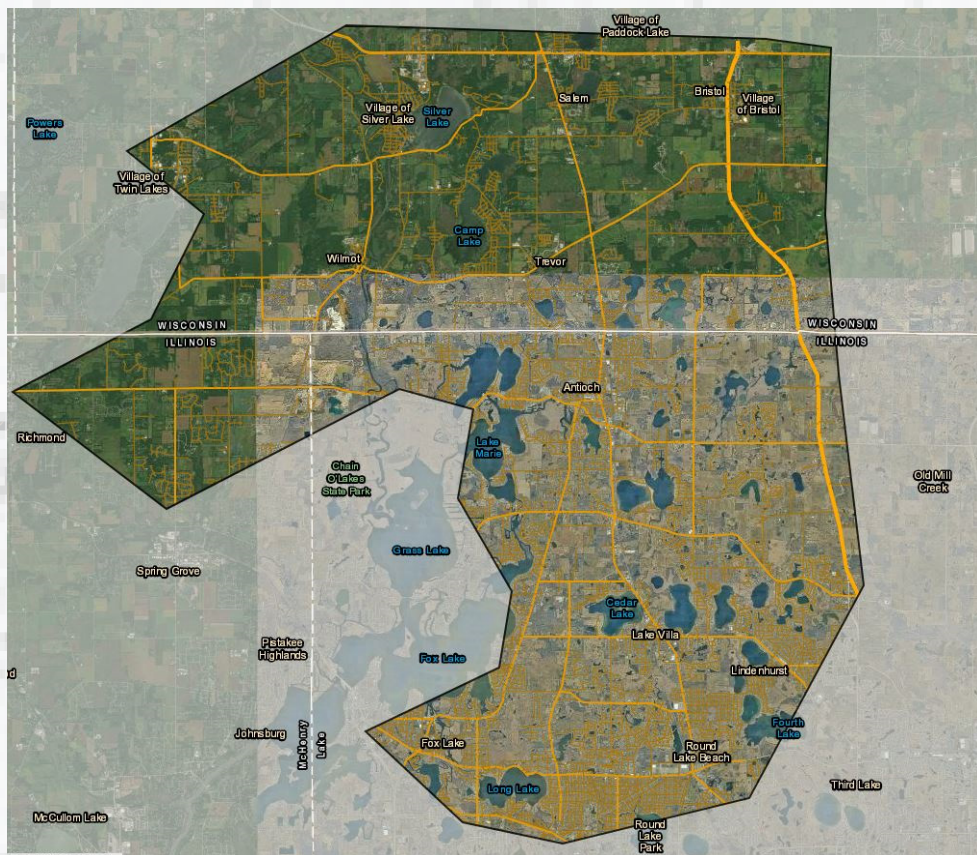
A SMART INVESTMENT LOCATION

Village of Antioch Trade Area

Minutes away from the Illinois-Wisconsin border, Route 50 is to the north, Route 12 to the west and Rollins Road to the south.

Within a 15 minute drive of trade area:

- Approximately 108,000 people with a median income of \$80,539 and an average home value of \$251,540.
- The area has a daytime population of approximately 95,000 and an employee population of approximately 69,000.





INCENTIVES THAT DRIVE RESULTS

BUSINESS INCENTIVE GRANTS

50% reimbursement up to \$20,000/year for qualifying improvements

TIF DISTRICTS

3 active districts supporting retail, industrial & downtown growth

SALES TAX REBATES

Up to 50% rebate for qualified sales tax-generating uses

INCENTIVES THAT DRIVE RESULTS

BUSINESS DEVELOPMENT DISTRICT

Enables 1% local sales tax for reinvestment; no property tax impact

FAÇADE IMPROVEMENT PROGRAM

Dedicated to preserving and enhancing historic downtown buildings

INFRASTRUCTURE PARTNERSHIP

Village may directly invest in infrastructure for high-value projects

*All incentive packages are tailored to project scale and impact. Work with us to build your custom package.



THRIVING COMMUNITY STRONG WORKFORCE BUILT FOR GROWTH


Business Ecosystem

- Diverse mix of small businesses, regional chains, and national retailers
- Supportive local government eager to partner with developers
- Active community with high retail foot traffic and tourism boost

Labor Market & Workforce

- Lake County workforce pipeline through Lake County Partners
- Access to SBA financing, workforce development, and site selection support
- Industrial Revenue Bonds and SBA 504/7(a) lending access





WORKFORCE DEVELOPMENT & TALENT PIPELINE

College of Lake County (CLC)

- Offers industry-aligned degrees and certifications in highdemand fields such as manufacturing, healthcare, IT, and skilled trades.
- Dedicated Advanced Technology Center (ATC) provides hands-on training in automation, mechatronics, and welding.
- Customized corporate training/apprenticeship programs tailored to business needs.
- Collaborates with employers so graduates are job ready and aligned with regional economic priorities.

Lake County Manufacturing Alliance

- A coalition of Lake County manufacturers working to grow and strengthen the regional manufacturing industry.
- Focuses on promoting manufacturing careers and closing the skills gap through workforce development programs.
- Partners with schools, colleges, and workforce boards to build awareness and provide students with pathways into high-tech manufacturing careers.
- Hosts events, roundtables, and industry showcases to connect talent with employers.

A LIFESTYLE THAT ATTRACTS TALENT & CUSTOMERS

- Safe, family-friendly environment
- Excellent schools (District 34 & District 117)
- Community events: Concerts, parades, farmers markets, and seasonal festivals
- Access to boating, fishing, and outdoor recreation via Chain O'Lakes
- 15+ parks, including Sequoit Creek Park (opened 2024)
- Antioch Aqua Center, inclusive playgrounds, and historic landmarks

PARTNER WITH THE VILLAGE OF ANTIOCH



Address

874 MAIN STREET,
ANTIOCH, IL 60002



Email

KBIEDERMAN@ANTIOCH.IL.GOV



Phone Number

847-395-1000 X1322

