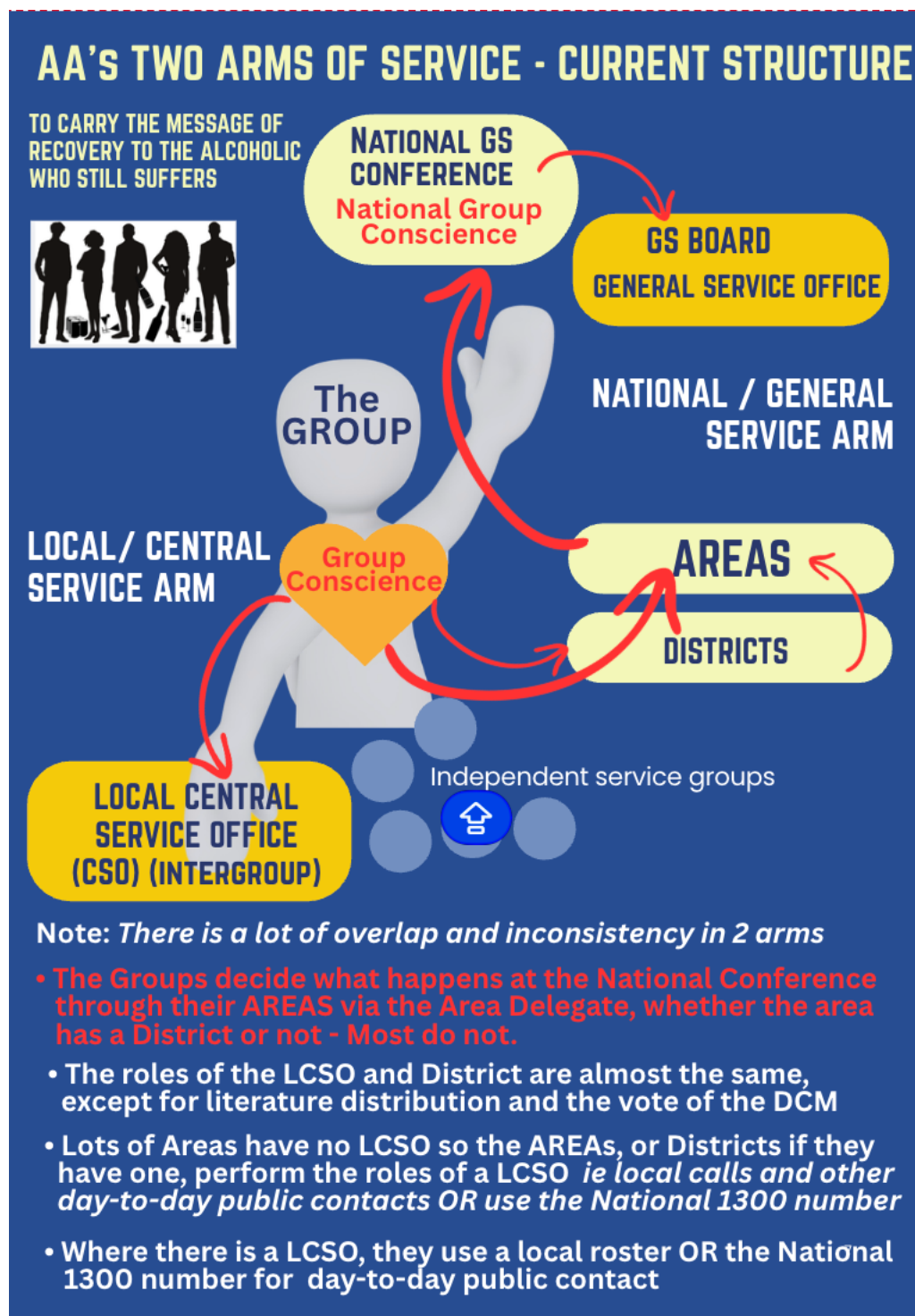


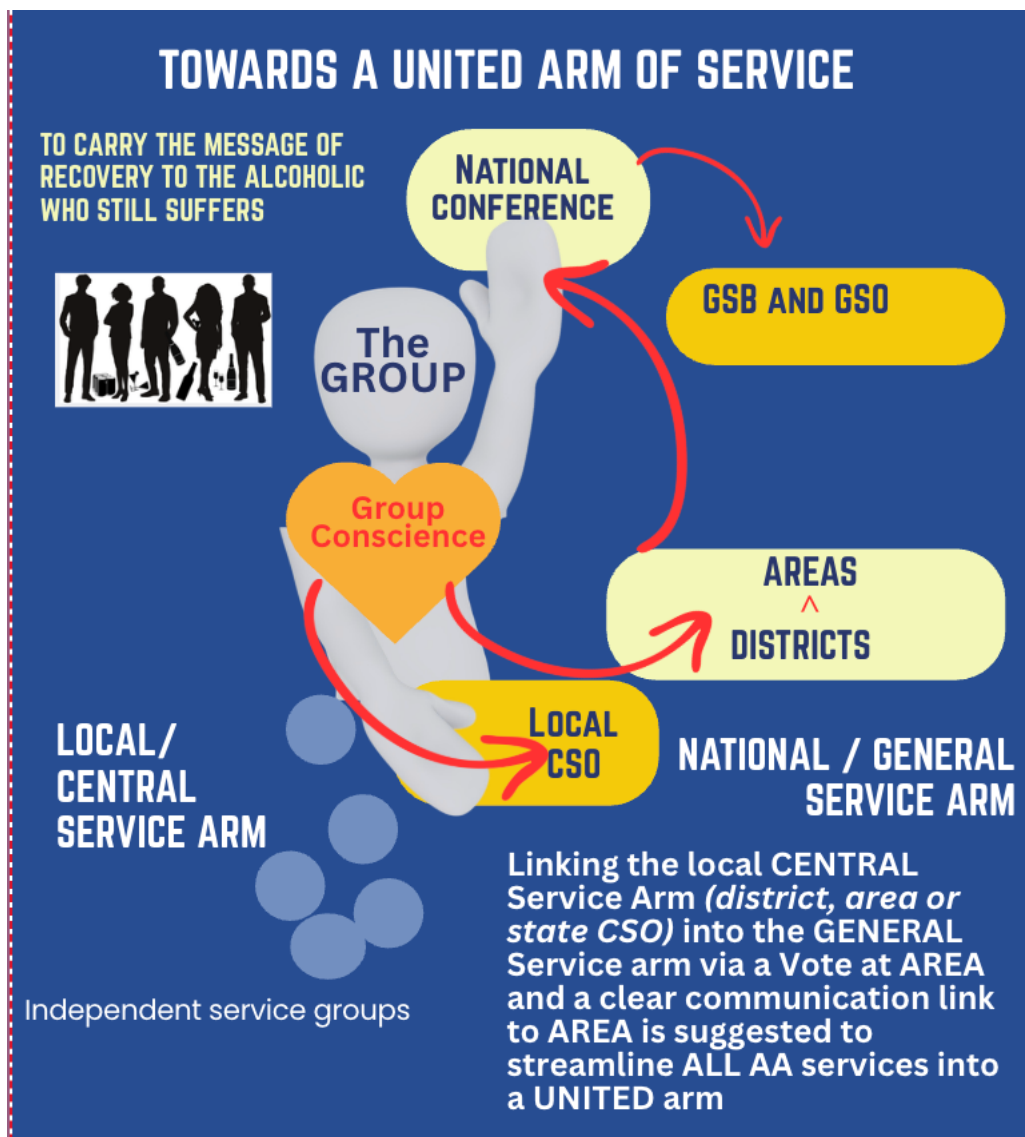
**Summary of Illawarra and South Coast Central Service Office Inc**  
 Submission on AA Structure – April 26



This diagram attempts to explain the Current Service Structure of AA in Australia. The World Service National / Local model evolved in America, but not so in Australia. The American model was put over a State model which we believe is too complicated and difficult as Australia does not have the population that America has.

The United Kingdom and other countries operate on simpler models, called a United or Single arm of service.

To achieve that the Illawarra and South Coast CSO proposes the Local Service Arm join into the General Service arm at whatever level makes the most sense to the particular LCSO with ONE vote at AREA Committee and ONE clear Communication Link to Area.



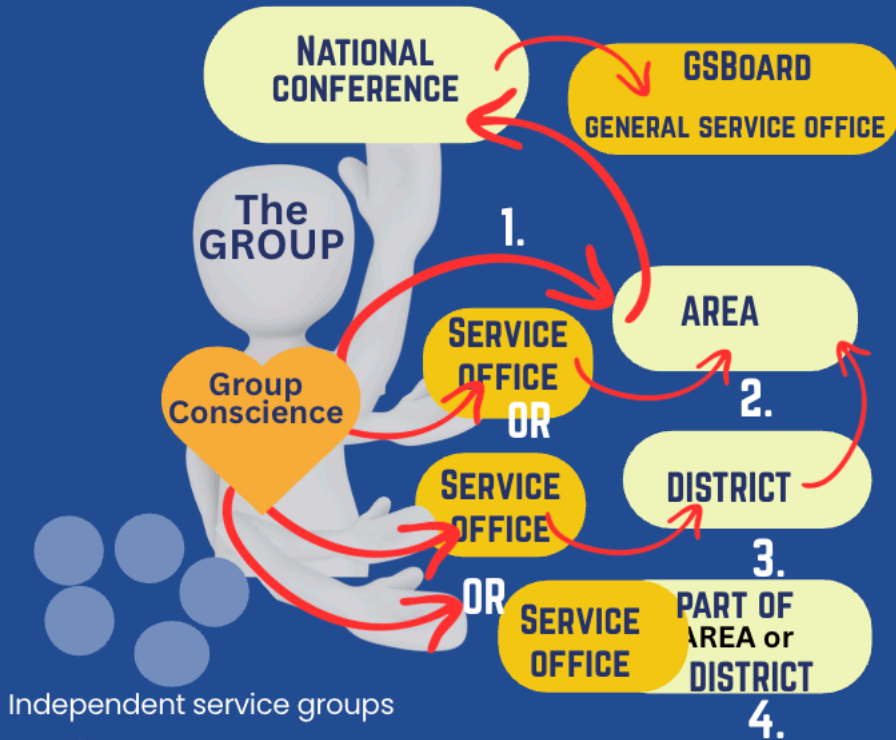
This diagram BELOW attempts to explain the various options a CSO could have, depending on the geographic area that they cover. For example Northern Territory and Tasmania only have one area, whereas WA and SA cover 2 areas each. The Illawarra CSO in practice covers two geographic areas, whereas the Sydney City Office covers a lot of Sydney outside is theoretical boundary for the General Service Structure and has in fact amalgamated with Area G.

There are many CSOs that have closed e.g. The Gold Coast, Penrith/Blue Mountains and others are struggling to over rent. Many services are able to be offered digitally now go a United Arm makes sense to not duplicate services, keep it simple whilst ensuring that when someone anywhere reaches out to AA their inquiry will be dealt with as quickly, effectively, efficiently and with the best quality response as possible.

# AA's ONE "UNITED" ARM OF SERVICE



TO CARRY THE MESSAGE OF RECOVERY TO THE ALCOHOLIC WHO STILL SUFFERS



Independent service groups

## NOTE

1. ALL groups still have their VOICE to the National Conference via their AREA
2. All existing LCSO decide whether to LINK in via their AREA
3. or via their DISTRICT to AREA
4. or by amalgamating with their District or AREA

Some CSOs may need to link via a AREA on a rotation basis e.g WA and SA as they cover more than on AREA

PRINCIPLE is ONE VOTE per LCSO via an AREA and clear communication link via District to AREA or straight to AREA

**Illawarra and South Coast Central Service Office Inc**

PO Box 25 Coniston NSW 2500

[aawollongong@gmail.com](mailto:aawollongong@gmail.com)

[www.aawollongong.org.au](http://www.aawollongong.org.au)

12 May 2026.