



[www.erreci-tech.com](http://www.erreci-tech.com)

# ERRECI S.r.l. BUSINESS PRESENTATION 2025





[www.erreci-tech.com](http://www.erreci-tech.com)



We are pleased to bring to your attention our company which is able to promote a wide range of equipment for laboratories in chemical, analytical, environmental, food, industrial, biological, clinical, for research institutes, etc..

- ERRECI S.r.l. was founded in 1985 and always takes care of sales, consulting and technical assistance for scientific and analytical instrumentation, our services and related customer assistance are guaranteed by the experience accumulated in over 30 years. Actually we have close relationship with important manufacturers of instrumentation brands in the world. In these years we have acquired a wide technical and commercial knowledge, which has enabled us to become more competitive, leading finally to propose a full innovative instrumental line in all the national territory. ERRECI currently working with several major companies, offering significant innovations in evolving area of analytical instrumentation.



## MAJOR PROMOTING AREA

2025



- WE ARE MANUFACTURERS READY TO USE DIAGNOSTIC KITS FOR HPLC.
- ERRECI operates in the scientific and analytical instrumentation market since 1985, in clinical chemistry area we are partner of Biochrom (part of Harvard Bioscience group) concerning AAA automatic amino acid analyzer used for neonatal screening in the field of metabolic diseases;
- Our Diagnostic kits panel cover determinations in area Occupational medicine, Metabolic disease, Drugs monitoring, Bio Monitoring, Vitamins profiling, Diabetes and Thalassemia, Biogenic amines, Osteoporosis, etc.
- ERRECI can supply “Open and Modular” HPLC systems that are normally used to tests and develop our kits, these systems are always open to other analytical methods.
- Life Science techniques, Molecular Biology
- More information are available in our website [www.erreci-tech.com](http://www.erreci-tech.com)



## MAJOR PROMOTING AREA

2025



- **CLINICAL CHEMISTRY: DEVELOPMENT OF THE HPLC AND LC/MS KIT PANEL**
- **CHROMATOGRAPHY: MODULAR HPLC COMPLETE WITH MICRO (4 ML/MIN), ANALYTICAL (10 ML/MIN) UP TO PREPARATIVE (1000 ML/MIN) SYSTEMS;**
- **ION CHROMATOGRAPHY: ANIONS AND CATIONS, COMPACT MODELS UP TO SIMULTANEOUS AUTOMATIC SYSTEMS FOR ANIONS AND CATIONS**
- **HPLC+GC/MS MULTIDIMENSIONAL CHROMATOGRAPHY; PATENTED MODULAR CHROMATOGRAPHIC SYSTEM FOR HPLC+GC/MS COUPLING VIA TOTAD INTERFACE**
- **MOLECULAR BIOLOGY: PCR, REAL TIME PCR, AUTOMATIC NUCLEIC ACID EXTRACTORS, GENE TARGET SYSTEMS, NANOPORE SEQUENCERS, MICROPLATE READERS**
- **SPECTROSCOPY: MICROVOLUME SPECTROPHOTOMETRY (DNA/RNA, PROTEINS). LIQUID AND SOLID MERCURY ANALYZERS; ATOMIC ABSORPTION AND ICP-OES, NIR FOR FOOD ANALYSIS**
- **LABORATORY INSTRUMENTS: GEL AND BLOT ANALYSIS SYSTEMS; TOC ANALYZERS**
- **WATER PURIFICATION SYSTEMS**
- **WORKSTATIONS FOR LIFE SCIENCE (PCR, ANAEROBIC) PHARMACEUTICAL, VETERINARY, CHEMICAL**



Linea kit HPLC

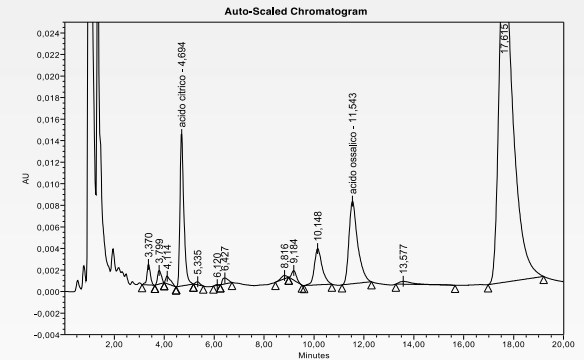
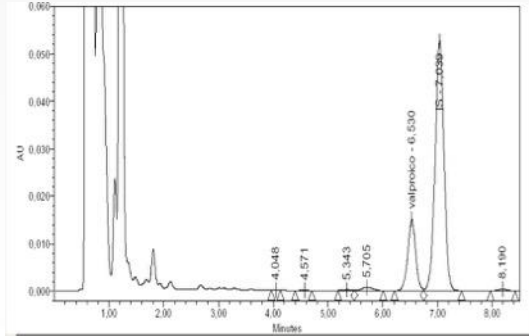
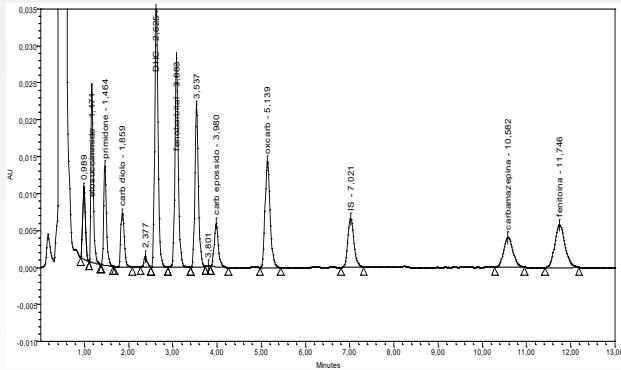
www.erreci-tech.com



# ERRECI LIFE SCIENCE CLINICAL CHEMISTRY



DIABETES AND THALASSEMIA, BIOGENIC AMINES, OSTEOPOROSIS, DRUG MONITORING, METABOLIC DISEASES, BIO MONITORING, OCCUPATIONAL MEDICINE, VITAMIN PROFILE





Linea kit HPLC

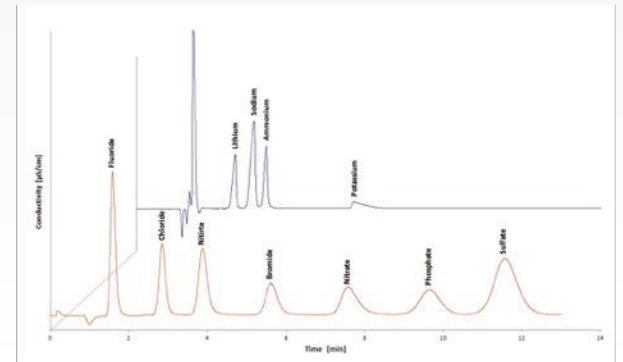
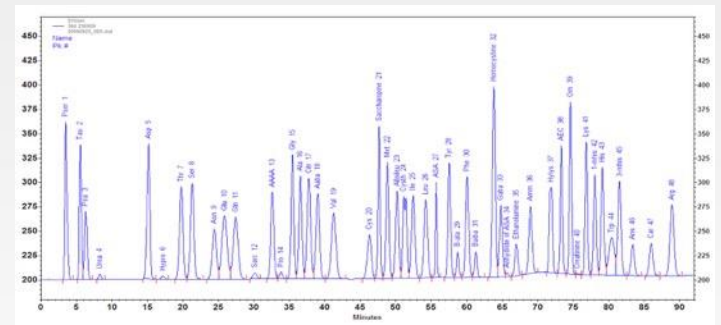
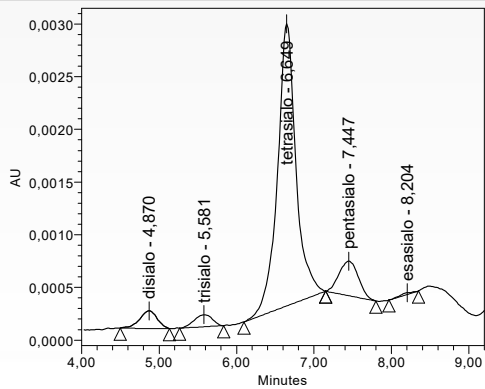
www.erreci-tech.com



# ERRECI CROMATOGRAPHY LINE



Auto-Scaled Chromatogram

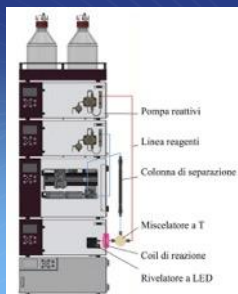




## ERRECI HPLC



- ERRECI EZCHROM MODULAR HPLC SYSTEM; HPLC micro systems (4 ml/min), analytical (10 ml/min) up to Preparative (1000 ml/min);
- APPLICATION DEVELOPMENT
- ISOCRATIC OR GRADIENT UP TO QUATERNARY HPLC PUMP (HIGH OR LOW PRESSURE)
- VARIABLE WAVELENGTH UV-VIS DETECTOR, (DUAL WAVELENGTH, SCAN OR DAD)
- REFRACTIVE INDEX DETECTOR, FLUORIMETRIC DETECTOR, AMPEROMETRIC DETECTOR, Other detectors available on request
- COLUMN OVEN (UP TO 6 COLUMNS) COMPLETE WITH VALVE FOR SELECTING THE APPROPRIATE COLUMN ACCORDING TO THE METHOD
- 120-POSITION AUTOSAMPLER (THERMOSTAT AND/OR DERIVATIZATION OPTION)



# ERRECI IONIC CHROMATOGRAPHY

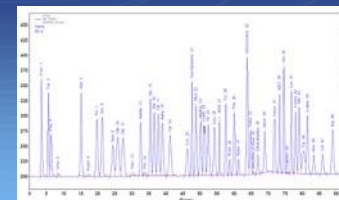


- ERRECI S150 SERIES MODULAR ION CHROMATOGRAPH; COMPACT, MANUAL, AUTOMATIC MODELS
- ANION, CATION ANALYSIS AND AUTOMATIC SIMULTANEOUS ANALYSIS FOR ANIONS AND CATIONS
- METHODS WITH POST-COLUMN DERIVATIZATION and UV DETECTOR used in EPA 326 and DIN EN ISO 11206 methods suitable for the determination of bromates, transition metals, Cr(VI) or others.
- ISOCRATIC OR GRADIENT UP TO QUATERNARY HPLC PUMP (HIGH OR LOW PRESSURE)
- UV-VIS DETECTOR, REFRACTIVE INDEX DETECTOR, FLUORIMETRIC DETECTOR, AMPEROMETRIC DETECTOR, Other detectors available on request
- 120-POSITION AUTOSAMPLER (THERMOSTAT AND/OR DERIVATIZATION OPTION)





## BIOCHROM AUTOMATIC AMINO ACID ANALYSIS SPECTROPHOTOMETRY



The analytical methods used normally to analyze amino acids are different, However, the Biochrom 30+ Automatic Amino Acid Analyzer meets the following requirements:

Instrumentation compliant with IVDR directives Risk class Medical devices as per Annex VIII of EU Regulation IVDR 2017/746: Class A – Rule 5

AOAC is the EU Directive 98/64/EC of the European Commission for the analysis of amino acids in food, feed and fertilizer matrices.

Compliance with Decree no. 6890 of 28 April 2014 "Approval of the official method of analysis for the determination of the content of free amino acids in cheeses";

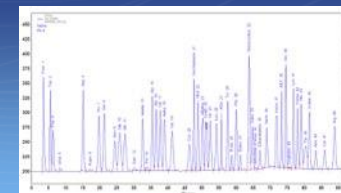
Pharmacopoeia 5.0 - AMINO ACID ANALYSIS IN ACCORDANCE WITH PHARMACOPOEIA 5.0 method "2.5.56 Amino Acid Analysis method 1". New Phoenix Software 21 CFR Part 11 Compliant

Gradient chromatographic system with 5+1 eluents (Buffer solutions with different pH and ionic strength) that are eluted through the column, using the exclusive "Step Gradient" system. 90-minute accelerated method, 48 amino acids in 90 minutes (up to Arginine)

UV/VIS SPECTROPHOTOMETRY LINE WITH EXCELLENT QUALITY/PRICE RATIO



# BIOCHROM AUTOMATIC AMINO ACID ANALYSIS SPECTROPHOTOMETRY



## APPLICATION SECTORS:

### **Clinical Chemistry, Physiology**

- Hospital, Academic, Pediatric Laboratories
- Metabolic diseases, newborn screening

### **Food Substances and Animal Physiology**

- Animal Feed and Fodder Industries
- Pet Food Manufacturers

### **Food & Dairy Products**

- Food Industry, Food Supplements
- Dairy Industry

### **Pharmaceuticals and Biotechnology**

- Pharmaceutical Industries
- Manufacturers of Pharmaceuticals, Medicines and Narcotics
- Fluid Manufacturers and Physiological Infusions

### **Research**

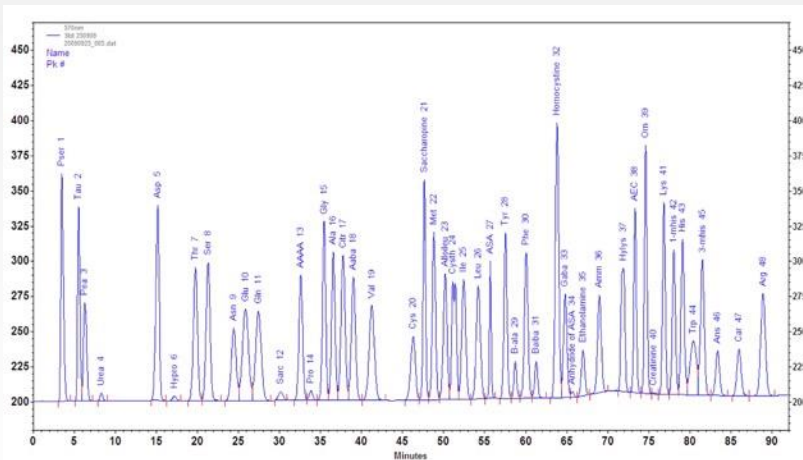
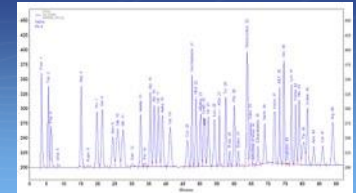
- University
- Research centers

### **Beverages**

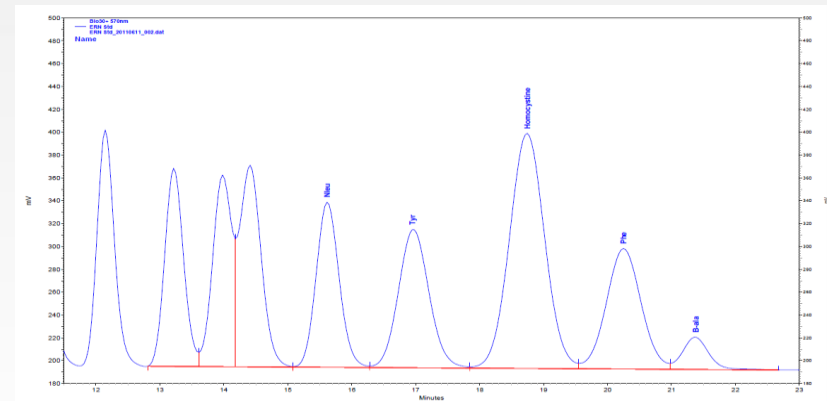
- Beverage industries (wine, juice, beer)
- Fruit juices



# BIOCHROM AUTOMATIC AMINO ACID ANALYSIS SPECTROPHOTOMETRY



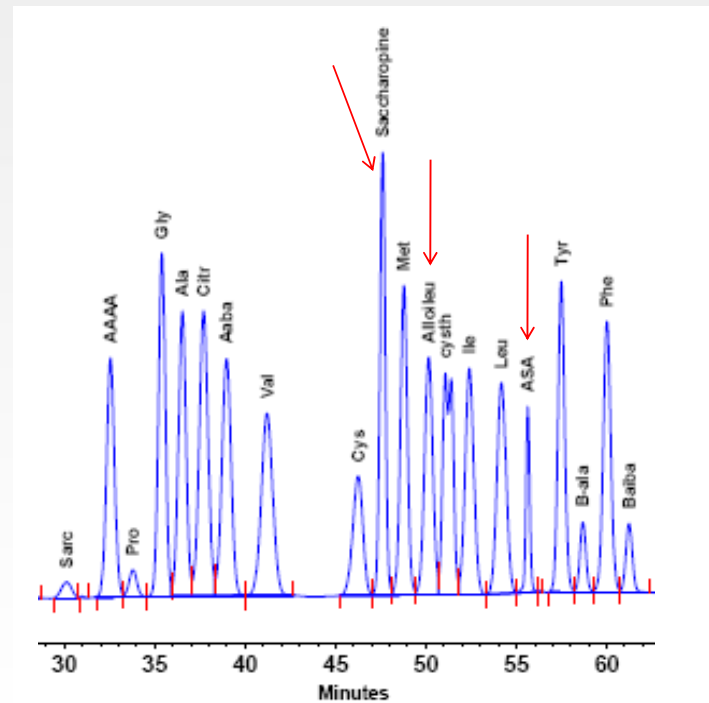
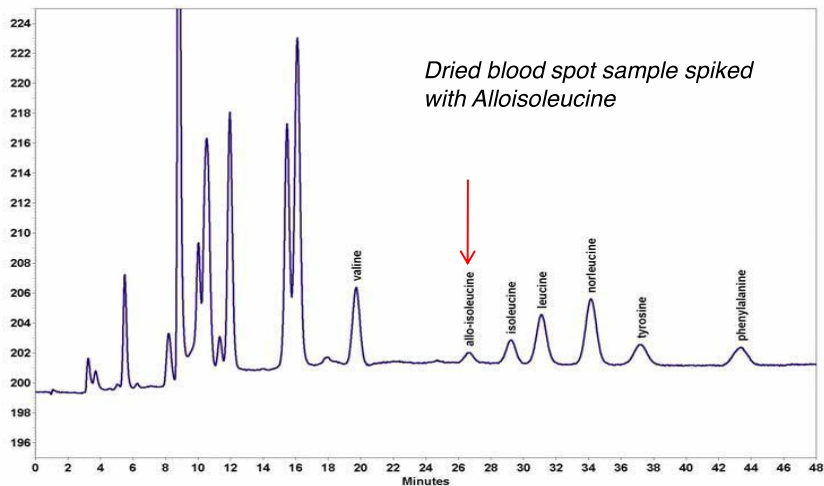
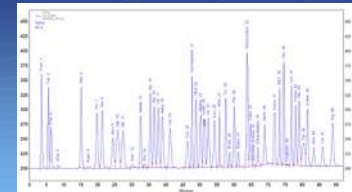
90 minutes AA profile



PKU Fast method 23 min.



# BIOCHROM AUTOMATIC AMINO ACID ANALYSIS SPECTROPHOTOMETRY





# Nebula Gas Chromatograph GC & GC-MS





# Nebula Gas Chromatograph GC & GC-MS

- A new generation of high-precision, high-automation and high-efficiency gas chromatographic analysis instruments with excellent performance
- The gas control uses high-precision automated EPC electronic flow control. Temperature, baseline adjustment, sensitivity adjustment, polarity selection, etc. are all controlled by microcomputer; with automatic ignition function; carrier gas saving function
- ECD detection limit  $3 \times 10^{-14}$ g/ml TCD sensitivity 10000mv.mL/mg
- The temperature control accuracy reaches  $\pm 0.03$  °C
- The workstation adds a baseline background correction function, which reduces the signal-to-noise ratio and improves peak shape.



# Nebula Gas Chromatograph GC & GC-MS

- We have a long history, with more than 30 years of gas chromatograph production and sales history, many industry application solutions. Many experienced and skilled service engineers.
- The workstation is easy to use, with clear interface, easy operation and complete functions.
- Excellent value, lower price than top brands

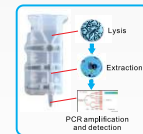




# ERRECI MOLECULAR BIOLOGY AREA



4 channels



single channel



16 channels





## ERRECI LIFE SCIENCE MOLECULAR BIOLOGY AREA GEL and Blot



- SYNGENE; Gel and Blot image acquisition and analysis systems
- POWER SUPPLIES AND ELECTROPHORETIC CHAMBERS
- HANDMAIDEN; CONSUMABLES AND CHEMISTRY FOR ELECTROPHORESIS
- WORKSTATIONS FOR PCR, LIFE SCIENCES, ETC.

### Basic

Gel, Blot,  
Fluorescence

**InGenius3**

**NuGenius XE**

### Medium

Gel, Blot,  
Fluorescence e  
Chemiluminescence

**GBOX F3 [fl]**

**GeneGnome XRQ**

**GBOX ChemiXRQ  
[fl + ch]**

### High Level

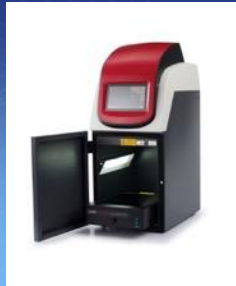
Gel, Fluorescence  
Chemiluminescence  
Multiplex, IR

**GBOX chemiXT4**

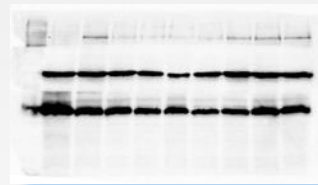
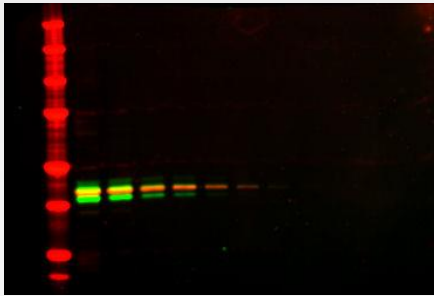
**GBOX XX9**

**GBOX XX6**

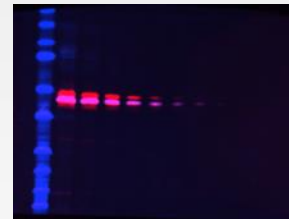
**GBOX Mini**



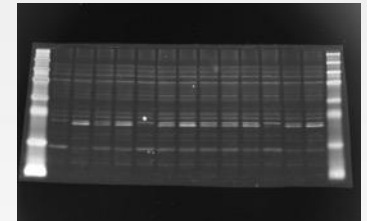
# ERRECI LIFE SCIENCE Syngene GEL and Blot System



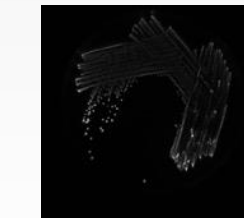
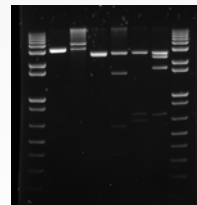
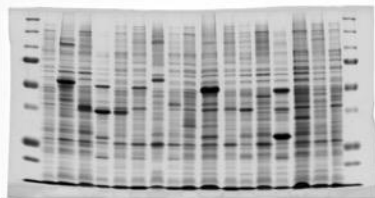
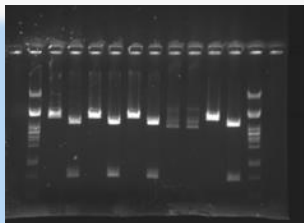
Chemiluminescenza



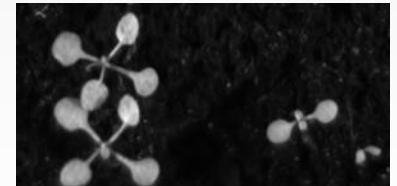
Multiplex



Alexa Fluor 647  
fluorescenza colorata



Bio-luminescenza



Plant imaging  
(GFP)



## ERRECI LIFE SCIENCE AIRCLEAN – PLAS LABS Laminar flow benches and workstations ISO 5

Process protection products from AirClean® Systems and PLAS LABS to ensure sample integrity. ISO 5 laminar flow benches and workstations are available in a wide range of sizes and configurations. Both vertical and horizontal designs make ISO 5 clean air available through a combination of electrostatically charged pre-filtration and HEPA or ULPA filtration. ALSO AVAILABLE THE WHOLE LINE PLAS LABS

<https://plas-labs.com/>





## ERRECI LIFE SCIENCE BIODROP Micro-Spectrophotometer



- BIODROP SPECTROPHOTOMETERS FOR MICRO-VOLUME DETERMINATION, ACCURACY, REPRODUCIBILITY AND EFFORT ON MICRO-VOLUME UP TO 0,5  $\mu$ l; AVAILABLE ALSO WITH CUVETTE 10 mm
- Display Touch Scree control or PC
- EASY TO USE; High Resolution Colour Display Touch Screen, Molecular Biology method to determination of DNA/Protein, Oligo, No movement part, NO Calibration required

---

**Simple: Pipette → Read → Wipe!**

---



## ERRECI LIFE SCIENCE MOLECULAR BIOLOGY AREA



- Concentration and purity of DNA, RNA, Oligo-nucleotides and Proteins (UV and colorimetric methods)
- Cy Dye Analysis; Absorbance measurement to evaluate the efficiency of DNA and/or protein samples



- Identification of contaminants at reciprocal wavelengths, determining the wavelength of unknown compounds
- Determine the melting point ( $T_m$ ) of DNA for PCR, qPCR, and sequencing

MICROPLATE READERS, FILTER MODELS, LEDS AND MONOCHROMATOR



# ERRECI LIFE SCIENCE MOLECULAR BIOLOGY AREA



ISO13485 and MDSAP certified manufacturer, focusing on life sciences and clinical diagnosis, products include PCR, AIGS, DNA Extractors, Sequencer nanopore, Microplate Readers, ecc.



# ERRECI LIFE SCIENCE MOLECULAR BIOLOGY AREA

## Real Time PCR QuantReady K9600



QuantReady is a quantitative fluorescence real-time PCR system complete with 10.1" color touchscreen monitor, sampling for 96-well plates and 6 channels advanced optic



# ERRECI LIFE SCIENCE MOLECULAR BIOLOGY AREA

## AIGS

### Automatic Integrated Gene detection System



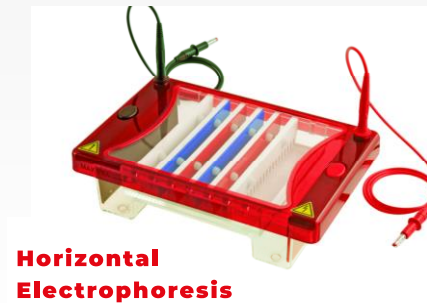
AIGS; Automated Integrated Gene Detection is the fully integrated system for rapid molecular diagnostics, it combines nucleic acid extraction and real-time PCR amplification, using the cartridge-based kit it is possible to carry out the analysis of gene data in total integration





# ERRECI LIFE SCIENCE Syngene GEL and Blot System

- SYNGENE; Gel and Blot Image System
- Electrophoresis unit and power supply
- Chemicals and consumables





# ERRECI CHEMICAL AREA





# ERRECI CHEMICAL AREA MERCURY ANALYZER

- MERCURY ANALYZERS FOR LIQUIDS AND SOLIDS
- SPECTROMETER / QUANTOMETER DC Arc



### **QUICK TRACE M-7600 CVAA**

Mercury analysis for liquid samples up to 0.5 ng/l. Atomic Cold Vapor Absorption (CVAA), Complies with EPA 245.7 methods.



### **QUICK TRACE M-8000 CVAF**

Mercury analysis for liquid samples up to 0.05 ng/l. Atomic Cold Vapor Fluorescence (CVAF), ideal for analyzing ultra-trace amounts of Mercury, EPA 1631 compliant.



### **Hydra II<sub>c</sub>**

Solid/semi-solid analysis, eliminates sample mineralization, saves time, and reduces cost of ownership



## ERRECI CHEMICAL AREA ATOMIC ABSORPTION (AA), ICP-OES (SEQUENTIAL) AND ICP-TOF-MASS SPECTROSCOPY

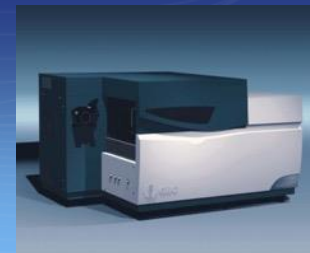


GBC has been designing, developing and manufacturing Atomic Absorption Spectrometers, ICP-OES and ICP-MS-TOF for over 30 years. The line includes:

- **XplorAA**; Compact, economical Atomic Absorption line with surprising analytical performance, motorized turret with two lamps or 6 lamps, continuously variable bandwidth (0.2-2 nm step 0.1 nm). Accessories graphite oven, autosampler, hydride kit, etc.
- **SavantAA**; Atomic Absorption line with very high analytical performance, maximum level of automation operating in multi-element, automatic turret with 8 lamps, continuously variable bandwidth (0.1-2 nm step 0.1 nm). Accessories graphite oven, autosampler, hydride kit, etc.
- **ENDURO T2100**; Atomic Absorption line with very high analytical performance, maximum level of automation operating in multi-element, automatic turret with 8 lamps, continuously variable bandwidth (0.1-2 nm step 0.1 nm). Reading with graphite oven and flame background correction with Zeeman effect with variable magnetic field (**0,6-1,1 Tesla**)



## ERRECI CHEMICAL AREA ATOMIC ABSORPTION (AA), ICP-OES (SEQUENTIAL) AND ICP-TOF-MASS SPECTROSCOPY



GBC, designing, developing and manufacturing Atomic Absorption Spectrometers, ICP-OES and ICP-MS-TOF for over 30 years. The line includes:

- **GBC Quantima**, high-resolution/sensitivity sequential/radial configuration ICP-OES spectrometer
  - LOW ARGON CONSUMPTION, LESS THAN 11 l/min
  - CONTROL OF OVER 230 INSTRUMENTAL PARAMETERS
  - MONOCHROMATOR A 1800/2400 lines/mm; HIGH RESOLUTION DOWN TO 0.004 nm
- **GBC Optimass 9600, Simultaneous orthogonal ICPoTOFMS (30,000 readings per second)**
- Simultaneous measurement of the full mass spectrum, display of 50 complete and integrated mass spectra every second.
- High level of sampling with determination of the entire mass measuring range.
- Multielement transient analysis, velocity of 30,000 complete mass spectra per second.
- Simultaneous internal standardization.
- Simultaneous determination of the isotope ratio for all elements with a standard deviation of better than 0.1 %.



## ERRECI CHEMICAL AREA SPECTROSCOPY ICP-OES ICP-MS

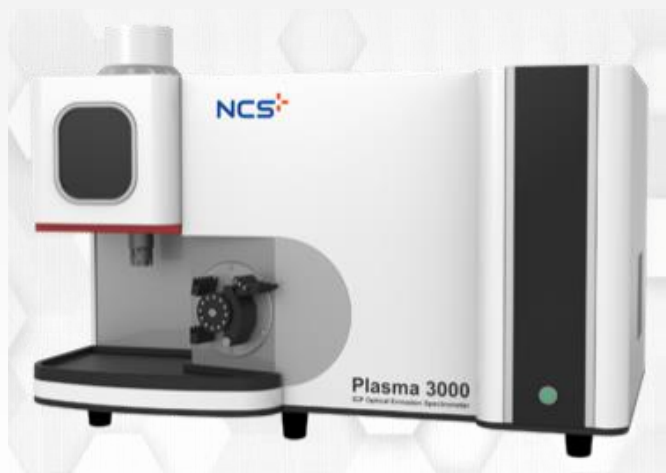
- NCS TESTING TECHNOLOGY Germany is the German headquarters of CISRI NCS Testing Technology. The main models of the line for metal analysis are the Plasma 3000 spectrometer (ICP-OES), PlasmaMS 300 (ICP-MS) as well as the CNX-808 (X-Ray Fluorescence).





## ERRECI CHEMICAL AREA SPECTROSCOPY ICP-OES ICP-MS

### SPECTROMETER ICP-OES Plasma 3000 Spectrometer ICP-OES Simultaneous Dual-View



- **Dual-View Axial and Radial Optics;**
- **Solid State RF Generator**
- **Vertical design flashlight**
- **Sample introduction;** The instrument is equipped with a number of optimized sampling systems, which can be used to test organic solvents, high salinity samples, complex matrices or samples containing hydrofluoric acid etc.
- **Detector;** The large backlit CCD detector Triple-stage **Peltier temperature control at -40°C**



## ERRECI CHEMICAL AREA SPECTROSCOPY ICP-OES ICP-MS

### SPECTROMETER ICP-MS PlasmaMS 300 Ispectrometer ICP-MS Quadrupole



- **Quadrupole with measuring range 2-255 amu; <0.8 AMU resolution**
- **Vacuum System;** The high-performance turbo-molecular pump for fast vacuum production
- **RF Plasma Generator 27.12 MHz;** Solid-state RF
- **Sample introduction;** Coupling with external accessories such as laser-ablation and liquid chromatography, option for acid resistance (HF resistance)
- **Collision cell;** operates via a high-performance, fast and efficient "Helium Collision Model" mass flow controller





## ERRECI CHEMICAL AREA TEKMAR - ANALYZERS TOC



**FUSION;** TOC analyzer uses strong UV oxidation with Persulfate which allows excellent carbon release from even the most difficult matrices. Thanks to the use of the SPC (Static Pressure Concentration) system, it achieves analytical sensitivities of up to (LOD) 0.2 ppb. TN option in chemiluminescence. Compliance EPA 415.1- 415.3, 9060A, Standard Method 5310C, ASTM D4779 and D4839, and prENV 13370, Cleaning Validation / USP TOC Method <643> / EP 2.2.44 / JP

**TORCH;** It uses a patent-pending SPC (Static Pressure Concentration) system to analyze TOC/TN using high-temperature combustion. Complies with EPA Methods 415.1, 415.3 and 9060A, Standard Method 5310B, EP 2.2.44, ISO 8245, EN 1484, USP 643 (Chapter 24), ASTM D2579, prENV 13370, AOAC 973.47. NDIR detector, extended measuring range for TOC 50 ppb-30,000 ppm. TN Option

**LOTIX;** TOC combustion analyzer designed for accurate measurement of carbon in aqueous solutions down to ppb levels. Detection by NDIR Non-Dispersive Infrared detector. Ideal for increased efficiency in the determination of TOC in wastewater (Method 5310B and EPA Method 415), an improvement of more than 25% in efficiency can be achieved. New generation NDIR detector, measuring range for TOC 50 ppb-20,000 ppm. Volume 0.5 ml for 13/15 minutes of analysis



# ERRECI CHEMICAL AREA WATER PURIFIERS

The company mainly focuses on the production of water purification products, Cyclon Water Still being a globally recognized brand. Fistream also supplies other water purification products, including Calypso and Cyclon Water Stills, a range of deionizers and pretreatments under the Fistream Puri-Fi brand



Spare Parts



Distillation Systems



Pre-Treatment



Storage System



GrainSense



# ERRECI CHEMICAL AREA GRAINSENSE NIR FEED

In 2014, the VTT Technical Research Centre in Finland started a project to transform traditional and bulky NIR spectrometers into a convenient portable format. The key innovation of the project was the introduction of an integrating sphere as well as the development of a NIR photodetector with low energy consumption and low background noise to be able to work at room temperature.





GrainSense



# ERRECI CHEMICAL AREA GRAINSENSE NIR FEED



The GrainSense Lab analyzer is developed based on patented technology and confirmed worldwide by an extensive library of calibrations made by GrainSense to measure protein, moisture, oil and carbohydrates from certified wheat grain samples.

- Can also be used with small sample sizes with fast read times.
- Accurate – Highly reliable results.
- Simple – Easy to use and clean, no moving parts prone to failure.
- Fast – Results in seconds.
- Flexible – Any sample larger than 500 mL
- MATRICES: Wheat, Barley, Oats, Rye, Rapeseed, Sunflower, Corn, Soybean, etc.



LIST of Instrumentation and Service, below we list the instrumentation that we are able to offer for the areas of CHROMATOGRAPHY, SPECTROSCOPY, LABORATORY INSTRUMENTS

- BIOCHROM AMINO ACID ANALYZERS: INSTRUMENT AND CONSUMABLES
- READY-TO-USE DIAGNOSTIC KITS FOR HPLC (Occupational Medicine, Metabolism, Drugs, Nutrition, Tumor Markers, etc.)
- LIQUID CHROMATOGRAPHY (HPLC) SYSTEMS: ANALYTICAL AND PREPARATIVE
- ION CHROMATOGRAPHY FOR ANIONS AND CATIONS, SIMULTANEOUS SYSTEM
- GAS CHROMATOGRAPHY (HRGC) SYSTEMS "FAST GC"
- MASS SPECTROMETRY; HPLC-MS, GC-MS, HPLC+GC/MS



LIST of Instrumentation and Service, below we list the instrumentation that we are able to offer for the areas of CHROMATOGRAPHY, SPECTROSCOPY, LABORATORY INSTRUMENTS

- **ATOMIC ABSORPTION SPECTROSCOPY (AA)**
- **ICP-OES AND ICP-TOF-MASS SPECTROMETRY**
- **MERCURY ANALYZERS**
- **UV/VIS/NIR SPECTROPHOTOMETRY: COLOR ANALYSIS, REFLECTION**
- **NIR SPECTROMETER FOR FOOD ANALYSIS**
- **MICROVOLUME SPECTROPHOTOMETRY FOR DNA/RNA, PROTEIN (BIODROP)**
- **UV/VIS/NIR MICROSPECTROPHOTOMETRY; NIR, RAMAN AND FTIR**
- **IR AND FTIR SPECTROSCOPY: SOLIDS, LIQUIDS, GAS AND ENVIRONMENTAL ANALYSIS, SEMICONDUCTORS, GASOLINE AND OILS**
- **POLARIMETRY AND REFRACTOMETRY: INSTRUMENTATION AND CONSUMABLES**



## LIST of Instrumentation and Service, below we list the instrumentation that we are able to offer for the areas of CHROMATOGRAPHY, SPECTROSCOPY, LABORATORY INSTRUMENTS

- MOLECULAR BIOLOGY: GEL SYSTEMS DOCUMENTATION, IMAGING, FLUORESCENCE, CHEMILUMINESCENCE, INFRARED
- PCR, Real Time PCR, AIGS Automatic Integrated Gene detection Sys
- NANOPORE DNA/RNA SEQUENCER
- BIOLOGY: GEL ELECTROPHORESIS, PCR WORKSTATIONS, LIFE SCIENCE, ETC.
- OSMOMETERS
- TOC Total Organic Carbon Analysis Instruments
- ELECTROCHEMISTRY: pHMETRY/REDOX, CONDUCTIVITY, OXIMETRY
- ACCESSORIES AND CONSUMABLES FOR THE TECHNIQUES IN QUESTION



# PARTNER

We are working with several important partner from Europe, Australian, USA, that include:





PARTNER:



Life Real



- **BIOCHROM/HARVARD BIOSCIENCE:** Amino acid analyser, UV/VIS/NIR Spectrophotometer
- **BioDrop:** micro-volume spectrophotometer, reading of DNA, RNA, OLIGO, CYE-DYE, Protein, etc..
- **ERRECI:** HPLC Liquid Chromatography High performance
- **ERRECI:** Ready to use Diagnostic Kit for HPLC. Application areas Diabetes & Thalassemia, Occupational Medicine, Drugs monitoring, Bio monitoring, Metabolic disease, Vitamin profiling, Osteoporosis, Biogenic amines, etc.
- **SYNGENE:** Gel Documentation, Imaging, UV, Fluorescence, Chemiluminescence, Multiplex, IR
- **Hangzhou Lifereal Biotechnology:** PCR, Real Time PCR, AIGS, nanopor Nucleic Acid sequencer; Microplate readers, Automatic Nucleic Acid Extractors.
- **TELEDYNE LEMMANS LABS/TEKMARK:** ICP/OES spectroscopy, TOC, VOCs, Mercury analyser
- **GBC SE:** Atomic adsorption AA, ICP-OES, ICP-MS-TOF, XRD refractometer, Viscosimeter. GC, HRGC, HRGC-MS, HRGC-MS-HPLC, HPLC-GC, HPLC-MS
- **CONSORT:** Electrochemical and electrophoresis
- **XYLEM & B+S:** Polarimeter and Refractometer



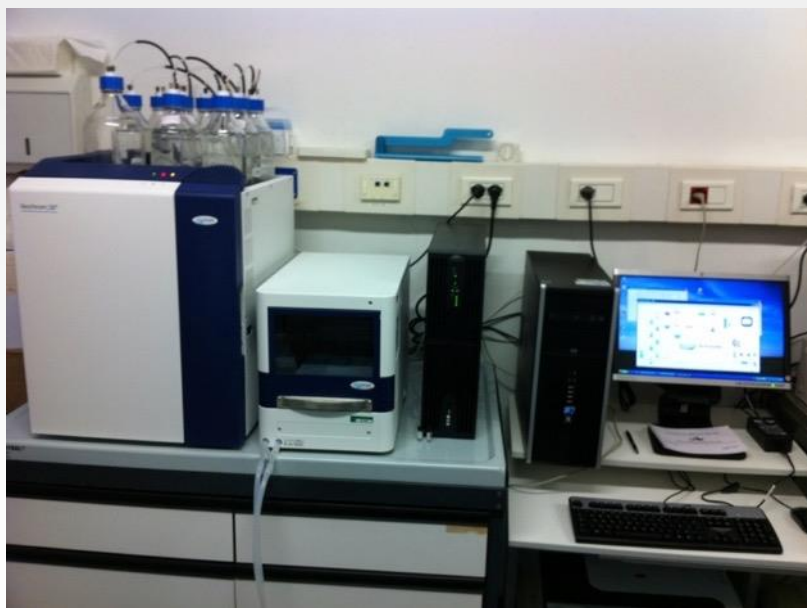
PARTNER:



- **Syngene / Airclean:** PCR Workstations, Veterinary, ecc.
- **Syngene / PLS LAB:** PCR Workstations, Veterinary, ecc.
- **CRAIC:** Micro-Spectrophotometers UV/VIS/NIR, Raman, FTIR.
- **MIDAC:** FTIR/NIR Spectrometers for Laboratory, Portable and GAS Analysis
- **INTERPECTRUM;** FTIR Spectrometry, Solid, Liquid, Gas and Environmental Analysis.
- **NCS GERMANY:** ICP-OES and ICP-MS spectrophotometry.
- **GRAINSENSE:** NIR spectrometry in food analysis
- **FireStream;** Water Purifiers



# EXAMPLES OF EQUIPMENT INSTALLED



Automatic Amino Acid Analyser



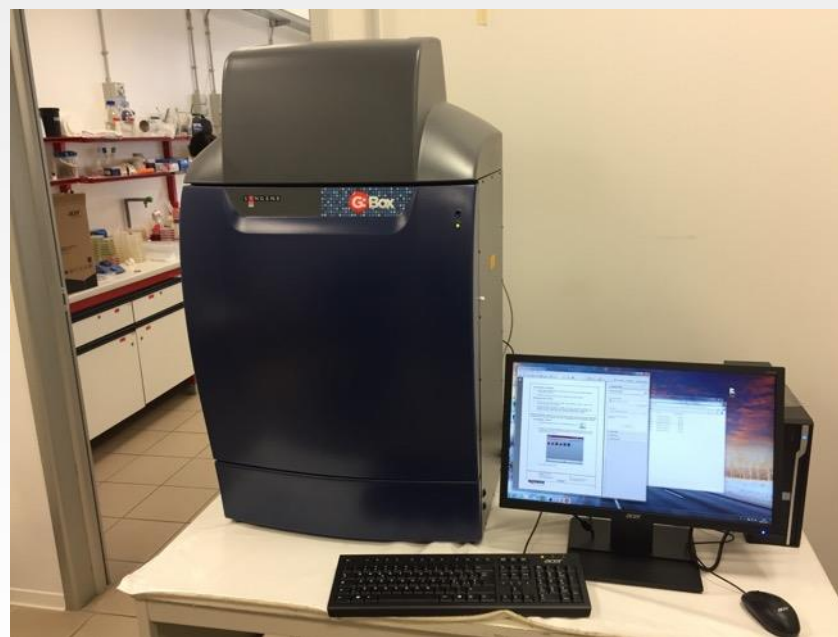
HPLC LPG GRADIENT



# EXAMPLES OF EQUIPMENT INSTALLED



HPLC Diagnostic kit



G:Box XX9 GEL DOC IMAGING



# EXAMPLES OF EQUIPMENT INSTALLED



Micro-spectrophotometer UV/VIS/NIR



Spectrometer ICP-MS-TOF



# EXAMPLES OF EQUIPMENT INSTALLED



ICP-OES Spectrometer



GC



# IMPORTANT CUSTOMERS

- Istituto Giannina Gaslini Ospedale Pediatrico Largo Gaslini, 5 – Genova
- Azienda Sanitaria Ospedaliera O.I.R.M. Sant'ANNA di Torino Piazza Polonia 94 – Torino
- Azienda Spedali Civili di Brescia Piazzale Spedali Civili, 1; 25123 – Brescia
- Università degli Studi di Milano – DISTAM/DEFENS Via Caloria, 2; 20133 – Milano
- ISTITUTO SPERIMENTALI OLII E GRASSI DI MILANO Via Giuseppe Colombo, 6– Milano
- I.C.P. Istituti Clinici di Perfezionamento Via Daverio, 6; 20122 – MILANO
- OSPEDALE PEDIATRICO BAMBINO GESU' P.zza Onofrio, 4; 00165 – ROMA
- AGRIBRANDS EUROPE ITALIA S.p.A. VIA PAVIA, 4; 27010 – SPESSA PO' (PV)
- ASSOCIAZIONE Oasi Maria SS. - IRCCS Via Conte Ruggero 73; 94018 – TROINA (EN)
- Azienda Ospedaliera Bologna - POLICLINICO SANT'ORSOLA Via Alberoni, 15; 40138 – BOLOGNA
- AZIENDA OSPEDALIERA MEYER Via Luca Giordano, 7/M; 50132 – FIRENZE
- CHIRON/SIRTON S.p.A. Via Fiorentina, 1; 53100 – SIENA
- OSPEDALE SAN PAOLO DI MILANO - CLINICA PEDIATRICA Via A. Di Rudini, 8; 20142 – MILANO
- SECONDA UNIVERSITA' DI NAPOLI - Dip.Scienze della Vita Via Vivaldi, 43; 81100 – CASERTA
- Policlinico-università Degli Studi Di Napoli FEDERICO II Via Sergio Pansini, 5; 80131 – NAPOLI
- UNIVERSITA' DEGLI STUDI DI CATANIA - Settore Provveditorato Via S.Sofia, 78; 95123 – CATANIA
- Università Degli Studi Di Bari – Dip. di Protezione delle Piante e Microbiologia Applicata Via G. Amendola 165/a - 70126 BARI
- RICERCHE CLINICHE PROF. MANFREDO FANFANI - FIRENZE
- OSPEDALE PEDIATRICO GIOVANNI XXIII DI BARI Via Amendola - 70126 BARI
- OSPEDALE CIVILE PUGLIESE – CLINICA PEDIATRICA Viale Pio X – 88100 – CATANZARO



# IMPORTANT CUSTOMERS

- Ministero delle Politiche Agricole e Forestali - Dip. dell'Ispettorato Centrale della Tutela della Qualità e Repressione Frodi dei Prodotti Agro-Alimentari Direzione Generale della Vigilanza per la Qualità e la Tutela del Consumatore – ROMA
- Ministero delle Politiche Agricole e Forestali Dip. dell'Ispettorato Centrale della Tutela della Qualità e Repressione Frodi dei Prodotti Agro-Alimentari Laboratorio di Perugia – PERUGIA
- Ministero delle Politiche Agricole e Forestali Dip. dell'Ispettorato Centrale della Tutela della Qualità e Repressione Frodi dei Prodotti Agro-Alimentari Laboratorio di Perugia – CATANIA
- CARABINIERI - Raggruppamento Investigazioni Scientifiche - Via delle Fonderie - 43100 PARMA
- R.I.S. CARABINIERI DI MESSINA - Strada Statale 114 Km 6,400 - 98100 TREMESTIERI ME
- R.I.S. CARABINIERI DI CAGLIARI - Viale San Bartolomeo, 21 – CAGLIARI
- AGENZIA DELLE DOGANE DI BOLOGNA - Laboratorio CHIMICO DELLE DOGANE - Via Pietra Melara, 1/2 - 40121 BOLOGNA
- FRATELLI AVERNA S.p.A. - Via Xiboli, 345 93100 CALTANISSETTA (CL)
- WYETH LEDERLE S.p.A. - DIV FDAH – 95100 CATANIA
- OSPEDALE DI FANO-Neuropsichiatria Infantile Via Vittorio Veneto, 2 – 61032 – FANO
- CEINGE Biotecnologie Avanzate S.carl Via Comunale Margherita – 80131 NAPOLI
- UNIVERSITÀ DEGLI STUDI DEL MOLISE DIPARTIMENTO DI STAAM - Via De Sanctis snc – 86100 CAMPOBASSO

Other important customers:  
FIAT Auto, Pirelli Industrie, Camere di commercio di CA – BA, Lab. Agrochimico Reg. Piemonte, Cinzano Spa, Univ-Milano, Marina Militare, Eridania Spa, Fli. AVERNA, ITIS "CESARIS", SARAS Ricerche, FOSFITALIA Spa, HENKEL Coating Spa, Repressione frodi CS, PUBLISER Empoli, Somacis spa, Consorzio Idrico Magentino, USL LE, SIEMEC, CID Anal. Clin., AIMAG MO, BITRON SPA, Agenzia delle Dogane di Bologna, Consorzio ACQUE di Empoli, ATB RIVA CALZONI, CELLOGRAFICA GEROSA SPA, LABORATORIO CHIMICO DELLE DOGANE DI ROMA, BOLOGNA E CAGLIARI, ARPA Lombardia (Mantova), etc.





# WE OFFER: TECHNICAL ASSISTANCE, SERVICE, RENT

- The support to customer include technical service, achieve certification, planned maintenance and on demand interventions, in addition development of analytical methods.
- To ensure a best collaboration ERRECI offers to its partners news, documentations and all necessary information, moreover we guarantees periodic training on the techniques and proposed instrument, also we support direct and personalized sales assistance, that includes visits to customers and telephone support.
- We are available for any clarification.



# SALES ORGANIZATIONS: AGENTS AND DEALERS



- More than 21 authorized Agents and dealers
- Active in different areas (Life science, environmental, Research, Pharmaceutical, Clinical, Industry, private laboratories, etc.)
- All Italy is covered from north to south
- Two major islands included
- 6 technical peoples to cover post-sales activity



# ACCESSORIE AND CONSUMABLES OFFERS ON ANY TECHNIQUES:





ERRECI S.r.l.

Via delle Robinie, 21

20090 – OPERA (MI)

T. +39/02/57600456

Fax +39/02/57600082

e-mail: [info@erreci-tech.it](mailto:info@erreci-tech.it)

[www.erreci-tech.com](http://www.erreci-tech.com)



**ERRECI**

[www.erreci-tech.com](http://www.erreci-tech.com)