



INTEGRATED TECHNOLOGIES MWD/LWD Forum

Keeping Your Finger On The Pulse



www.iadd-intl.org

Welcome

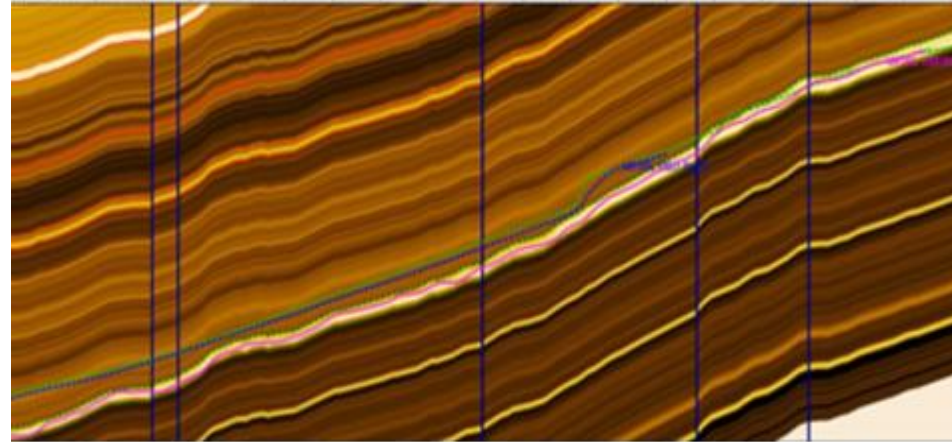
Speaker Information

- Paul Neil
- Sr. Director M/LWD & RSS
- Sep 18, 2025
- NOV



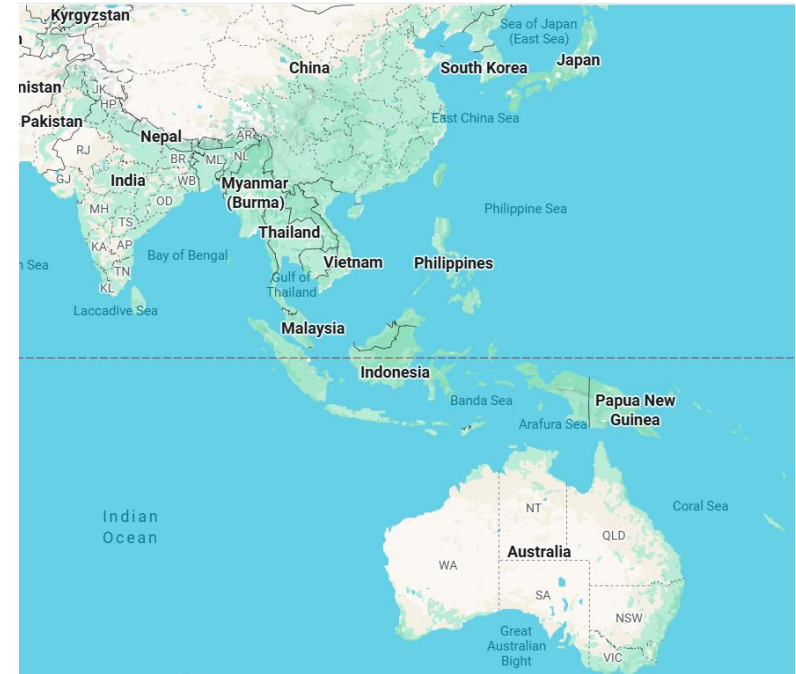
Application and Challenges

- **Coal Bed Methane**
- **Geosteering 3 - 6 ft thick zones**
- **Multilateral fishbone wells with open hole sidetracks**
- **Up-dip**



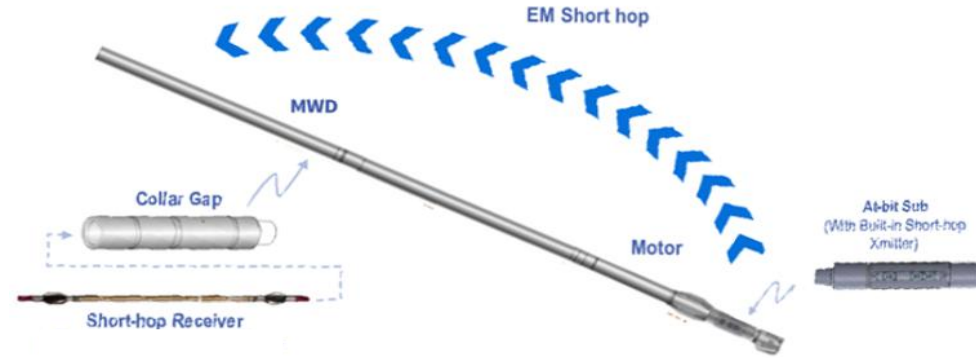
Coal Bed Methane overview

- Typically, shallow (1,000 – 4,000 ft TVD)
- Shorter laterals (often 2,500–5,000 ft)
- Drilling Conditions
 - Lateral 6 1/8" hole size
 - Avg ROP ~75 ft/hr.
 - Highly cleated and prone to coal sloughing
 - 1/10th compressive strength of West Texas Shale
- At the bit measurements are critical to landing and staying in zone.



iNBS Solution

- **Total Length ~33"**
- **Measurements:**
 - Cont Inc at Bit
 - Azi GR
 - Azi Res optional
- **Short hop hard wired receiver to MWD**
- **Hop distance up to 70+ feet**
- **4 Quadrant in RT**
- **16 sector in RM**

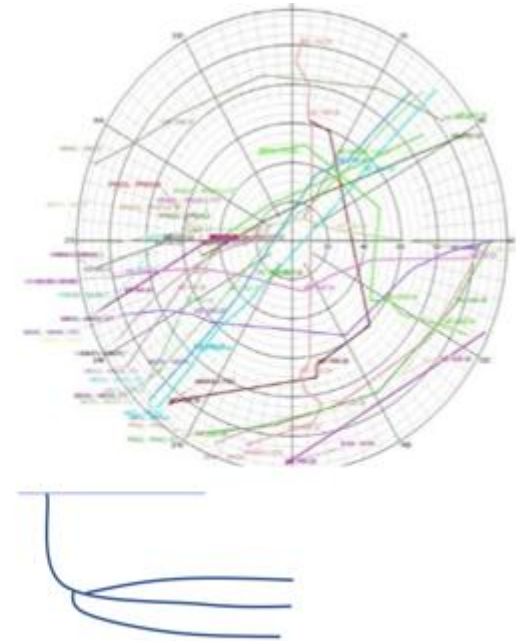
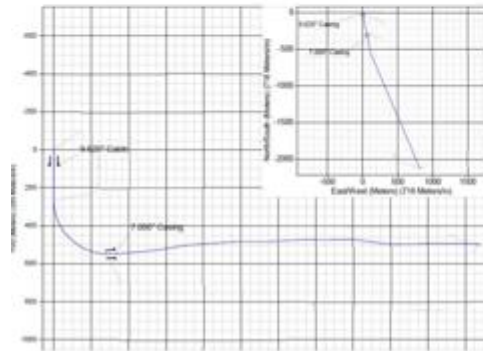


Challenges - Data Transmission

- **GR Decoding:** Developed data compression to improve the rate at which RT GR was decoded at surface
- **Improved Resolution:** Improved resolution from 1 API to 0.25 API for RT data

Results

- **Total Wells: 58**
- **Total Footage: 841k ft**
- **95+% in zone**
- **0 NPT in last 14 months**
- **Longest tri lateral drilled:
16,702 ft**



US applications

■ GeoSteering

- Landing a curve
- Reduce tortuosity
- Smoother wellbore for casing

■ GeoStopping

- Casing point detection
- Coring point detection

■ Vibration measurements

- At bit vibration measurements





INTEGRATED TECHNOLOGIES MWD/LWD Forum

Keeping Your Finger On The Pulse



www.iadd-intl.org

Thank You