

10G Ethernet Switch

XGS-2100M

16 x 10G SFP+ + 4 x 10G combo ports L2+ Managed Ethernet Switch

◆ Hot Swappable Power and FAN



CTC Union Technologies unveils the brand-new gear to enable high-density 10G SFP+ slots Ethernet Switch. It is equipped 16 ports 10G SFP+ slot + 4 ports 10G combo (10G SFP+ or 100M/1G/2.5G/5G/10G RJ45) in high performance switching and wire speed connectivity to boost the connection efficiency. The **hot swappable power and FAN** module are designed to keep high network-availability without service interruption when components fail.

The XGS-2100M is designed to enable the application for aggregation network or core switching and connection for agile network deployment. With anticipating AI-driven applications era is coming in the near future, every kind of appliance will be triggered to internet ready capability as it is aimed at the smart device. No matter what the enterprise or mission-oriented park such as hospital, manufacturing or campus etc. as well as SMB, they all have to keep the room and flexibility to expand the network capacity for increasing traffic from server, wireless access and IoT gears.

The 10G combo ports option maximizes the usability to extend the network deployment as you wish. When XGS-2100M is adopted in the access network deployment, it offers up to 20 10G fiber ports for highly extendable and easy installation features. The 10G RJ45 port is capable of supporting the NBase-T multi-gigabit standards to pave the way for future-proof WiFi 6E/7 gear and edge computing. It also can be used as the network expansion as connecting to the 10G fiber aggregation layer network. The business or telecom service provider can leverage XGS-2000M to provision 10Gbps speed migrated backbone network for multiple access and fulfilling versatile application scenarios.

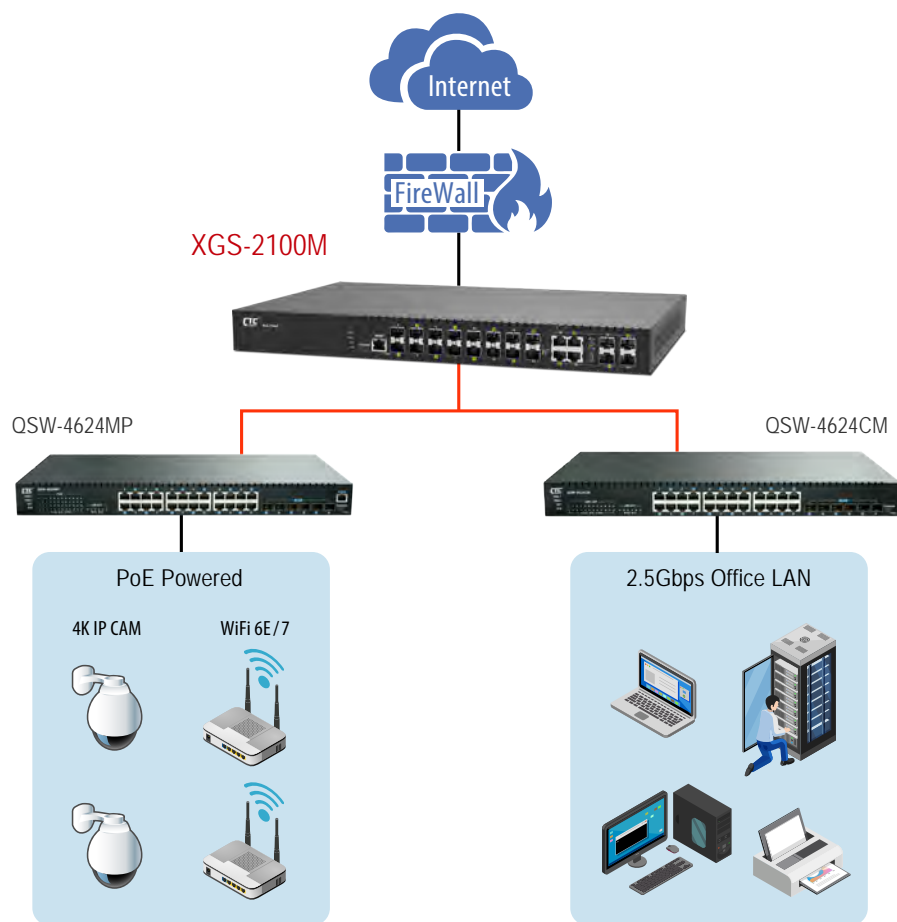
The XGS-2100M is featured robust L2 switching functionality such as VLAN, port trunking, QoS, span tree protocol and IGMP multicast service as well as some L3 routing features included static route, RIP v1/v2, OSPF v2/v3 and VRRP. The hard-wired based ACL enabled the secured network access and traffic transportation as network administrator desired to reduce the risks of unauthorized or illegal intruders. The diversified management interfaces via Web GUI, Telnet and SNMP offer friendly and ease-to-use as well as secured remotely management in traffic encrypted or isolated. Also, the adaptive fan speed control design delivers the noise suppression operation as silent as possible by detecting the traffic load in real time.

Specifications

Interface	Fiber port: 16x 10G SFP+	
	Combo port: 4x (10G SFP+ slot or 100M/1G/2.5G/5G/10G RJ45)	
	Console port: RS-232 in USB type C	
Packet Forwarding Rate	14880pps	@10Mbps
	148800pps	@100Mbps
	1488000pps	@1000Mbps
	3720000pps	@2.5Gbps
	7440000pps	@5Gbps
	14880000pps	@10Gbps
Switching Fabric Capacity	400Gbps	
Transmission Method	Store and Forward Switching	
Packet Buffer	32M bits	
MAC Table Size	32K	
Jumbo Frame Size	10K Bytes	

VLAN Feature	IEEE 802.1Q tagged VLAN (4K VLAN groups)
	IEEE 802.1ad QinQ VLAN
	Voice VLAN, MAC based VLAN, Protocol based VLAN
	IP subnet based VLAN
	Private VLAN for port isolation, VLAN translation, GVRP
Link Aggregation	Static trunk (SA, DA, IP, TCP/UDP port)
	IEEE 802.3ad LACP, 10 LACP trunk groups Max; 8 port Max. per LACP trunk group
	IEEE 802.1AX
L2 Switching Protection	IEEE 802.1D STP/IEEE 802.1w RSTP/IEEE 802.1s MSTP
	Loop Protection
QoS Feature	Hard wired IEEE 802.1p 8 priority queues per port
	Traffic scheduling based on strict/WRR priority
	CoS based traffic classification on switch port, VLAN ID, DSCP, TCP/UDP port
	IEEE 802.1p priority tag remarking, DSCP remarking
	Per port/queue based ingress/egress rate limit in steps of 100kbps
	IEEE 802.3x flow control
	IEEE 802.1Qbb priority based full-duplex flow control
Security	Multicast/Broadcast/Unicast storm control with flooding control
	Static port security (MAC based)
	Per port limited MAC learning
	Port based/MAC base/single/multiple IEEE 802.1x access control
	512 ACL rules based on L2~L4 information
	RADIUS/TACACS+ AAA
	HTTPs & SSH v2
	IP/MAC binding
IP Multicasting	IP source guard & ARP inspection
	IGMP snooping v1/v2/v3, IGMP proxy
	MLD snooping v1/v2
	IGMP fast leave
	IGMP query
	IGMP filtering/throttling
	MVR (Multicast VLAN Registration)
L3 Routing	Static route, RIP v1/v2, OSPF v2/v3, VRRP
Management	WebGUI/Telnet CLI interface
	SNMP v1/v2c/v3
	RMON I (1,2,3,9 groups) & RFC1213 MIB II
	DHCP client/snooping/relay option 82
	TFTP/HTTP based firmware and configuration upgrade
	Port mirroring, RSPAN
	Event syslog
	DNS client/proxy
	NTP client
	UPnP
	IPv4/IPv6 management
	SFF-8472 DDMI
	IEEE 802.1ab LLDP
Power Input	100~240VAC ; 36~60VDC
Power Consumption	< 50W
Operating Temperature	0~50°C
Storage Temperature	-25~70°C
Humidity	5%~95% (non-condensing)
Dimension	440 x 280 x 44 mm (W x D x H)
Certification	CE, FCC class A

Application



Ordering Information

Model Name	Description
XGS-2100M-AC	16 x 10G SFP+ Slots + 4 x 10G combo ports Managed Ethernet Switch with Single AC Power Supply
XGS-2100M-DC	16 x 10G SFP+ Slots + 4 x 10G combo ports Managed Ethernet Switch with Single DC Power Supply (-48V)
XGS-2100M-AA	16 x 10G SFP+ Slots + 4 x 10G combo ports Managed Ethernet Switch with Dual AC Power Supply
XGS-2100M-DD	16 x 10G SFP+ Slots + 4 x 10G combo ports Managed Ethernet Switch with Dual DC power Supply (-48V)
XGS-2100M-AD	16 x 10G SFP+ Slots + 4 x 10G combo ports Managed Ethernet Switch with AC + DC Power Supply

Optional Accessories

■ 10G SFP+ Transceiver Module

Model Name	Description
SFM-1000-SR85	10G SFP+ SR/SW MMF 300m, 850nm VCSEL, 10G Ethernet/FC/SDH/SONET
SFS-1010-LR31	10G SFP+ LR/LW SMF 10km, 1310nm DFB DML, 10G Ethernet/FC/SDH/SONET
SFS-1040-ER55	10G SFP+ ER/EW SMF 40km, 1550nm DFB EML, 10G Ethernet/FC/SDH/SONET
SFS-1080-ZR55	10G SFP+ ZR/EW SMF 80km, 1550nm DFB EML, 10G Ethernet/FC/SDH/SONET