



newsletter

Salisbury Women's Refuge

Issue 12

February 2026

Appeal update

You will have seen our fundraising appeal just before Christmas, asking for £20,000 to allow us to keep the Refuge open whilst we resolve a longer term plan. We were overwhelmed with the generous support from over 250 people and delighted that our target has now been reached



New trustees

We need new trustees to help us secure the long term future of the refuge. We'd like to have a group of trustees with varying skills whether that be experience in social care, marketing, communications, community engagement, fundraising, business, compliance or procurement. We've created a poster at the bottom of the newsletter - please can you print off and place on local noticeboards.

Please get in touch with Caroline Probert to find out more.

**New trustees
needed**

Egg-citing Easter!

After last year's success, we're delighted to have been invited back to run another Easter Egg Hunt at Wilton House this year.

Dates for your diaries:

Friday 3 April, Saturday 4 April &
Monday 6 April 2026

For full details see the attached poster.

We're hoping for a bumper attendance, so please put it in your calendars and spread the word. Perhaps you could print off and display the poster.



Supporter Spotlight

Thank you to **Salisbury Soroptimists** who raised over £684 at the end of last year. They got brains ticking at a fun quiz in November, followed by a film night jointly run with **Bemerton Film Society**, giving us a good reason to get out one of those dark December nights.



As part of the Salisbury Live 'Let's Give Gigs 2026' the **Avon Brewery** hosted a fun night of music and dancing on behalf of the refuge. Special thanks go out to **Break Cover**, with support from **Disco Divas** and special guests **Rosie Jay** and **Rachel Sinnetta**, for sharing your musical talents, and for all those who attended!

Upcoming Events

Watch this space for news about the Big Give... we'll know on 6th May whether our campaign has been approved.

If so, your donations to us during the last week in June could be doubled.



Please make note!

How else can you help?

Use the QR code below to make a donation or try one of these ideas...



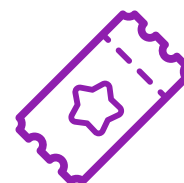
Spread the word



Consider making a monthly donations



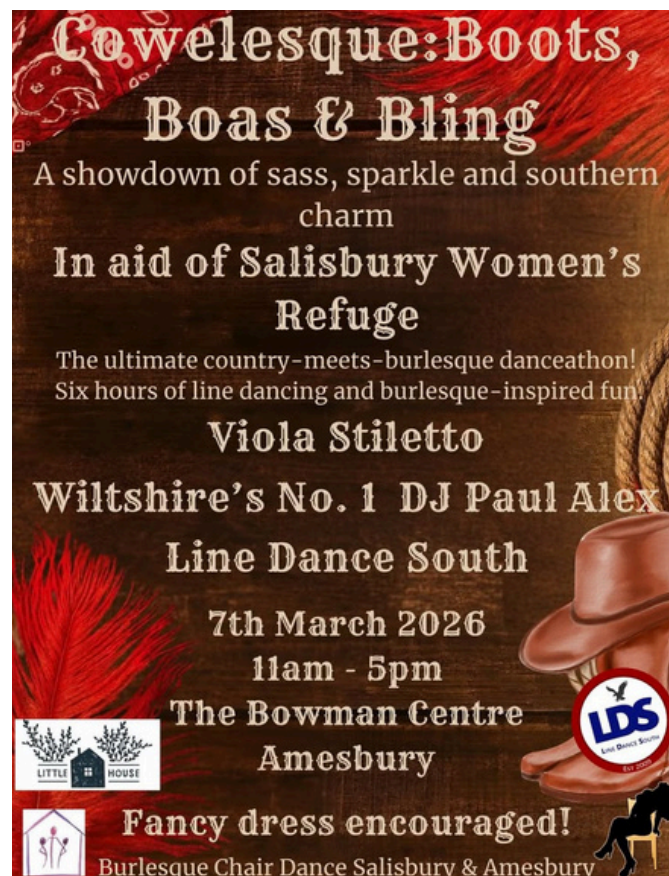
Nominate us as your company charity of the year



Organise an event



Support us in sponsored events



Salisbury Women's Refuge



**New trustees
needed**



Are you passionate about helping women to move forward
after the hardest of times?

Whether your skills are in social care or media, business,
compliance or something else, you can make a difference.

Help us build a dynamic team for the future

**Contact Caroline Probert to find out more
chair@swrefuge.co.uk or 07742 920433
<https://www.salisburywomensrefuge.co.uk/>**

EASTER EGG HUNT



HOP ALONG FOR
SOME FAMILY FUN!

Good Friday
Easter Saturday
Easter Monday
3, 4 & 6 April
11am to 3pm

In the gardens of Wilton House



Entrance £5

Parking and cafe available



In support of Salisbury Women's Refuge
Charity Number 1112497