

Couplers & Adapters

Heavy-Duty Polypropylene Coupler/Adapters

1/2" – 4"

- Extra thick walls, extra strength
- Safety Latches available on all couplers ranging in size from 1-1/4" to 3"
- Manufactured from glass-reinforced polypropylene for stability, strength and toughness
- Temperature range from 10°F to 180°F

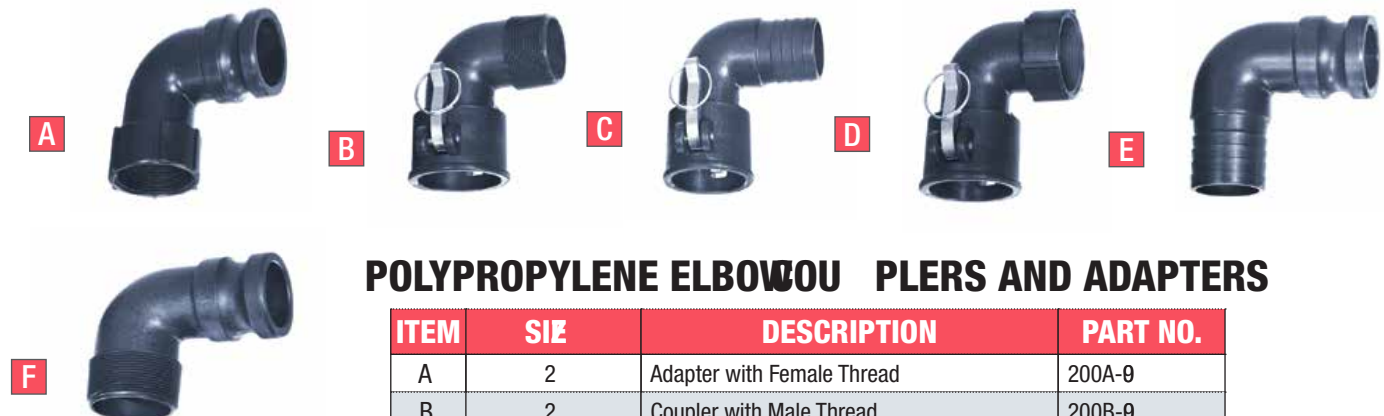


ITEM	DESCRIPTION	1/2"	3/4"	1"	1-1/4"	1-1/2"	2"	3"	4"
A	Male Adapter/Female Thread	050 A	075 A	100 A	125 A	150 A	200 A	300 A	400 A
B	Female Coupler/Male Thread	050 B	075 B	100 B	125 B	150 B	200 B	300 B	400 B
C	Female Coupler/Hose Shank	050 C	075 C	100 C	125 C	150 C	200 C	300 C	400 C
D	Female Coupler/Female Thread	050 D	075 D	100 D	125 D	150 D	200 D	300 D	400 D
E	Male Adapter/Hose Shank	050 E	075 E	100 E	125 E	150 E	200 E	300 E	400 E
F	Male Adapter/Male Thread	050 F	075 F	100 F	125 F	150 F	200 F	300 F	400 F
DC	Female Coupler Cap	050 DC	075 DC	100 DC	125 DC	150 DC	200 DC	300 DC	400 DC
DP	Male Adapter Plug	050 DP	075 DP	100 DP	125 DP	150 DP	200 DP	300 DP	400 DP

Elbow Coupler/Adapters

2"

- Manufactured from glass-reinforced polypropylene for stability, strength and toughness
- Safety latches standard on all couplers
- Temperature range from 10°F to 180°F



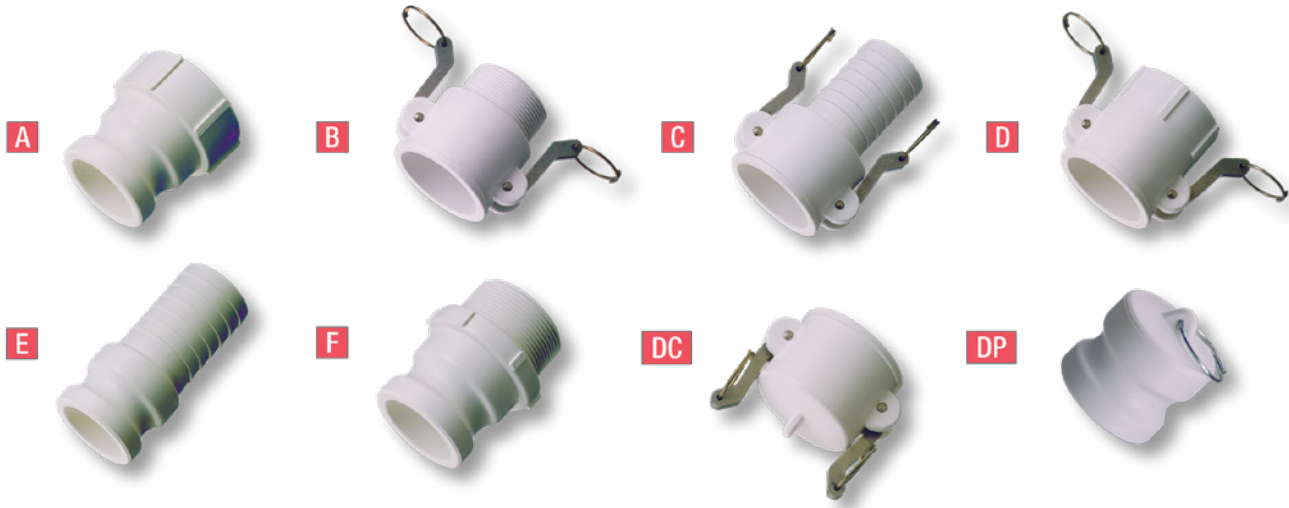
POLYPROPYLENE ELBOW COUPLERS AND ADAPTERS

ITEM	SIZE	DESCRIPTION	PART NO.
A	2	Adapter with Female Thread	200A-Ø
B	2	Coupler with Male Thread	200B-Ø
C	2	Coupler with Hose Shank	200C-Ø
D	2	Coupler with Female Thread	200D-Ø
E	2	Adapter with Hose Shank	200E-Ø
F	2	Adapter with Male Thread	200F-Ø

Food-Grade Glass-Filled Polypropylene **Coupler/Adapters**

3/4" – 3"

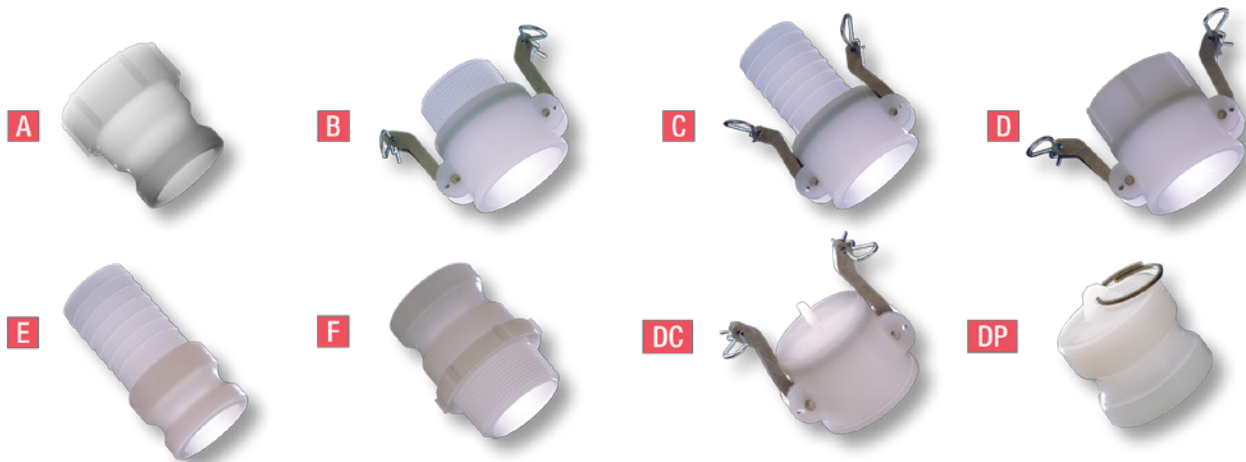
- FDA / NSF compliant material
- Nitrile gaskets furnished as standard. EPDM, Buna-N and Viton® also available
- Good mechanical strength
- Resistance to alkalis, salts, alcohols, phosphoric and hydrochloric acids, and animal, vegetable and mineral oils
- Temperature range under normal conditions from 10°F to 180°F



Polyvinylidene Fluoride (PVDF) **Coupler/Adapters**

1/4" – 3"

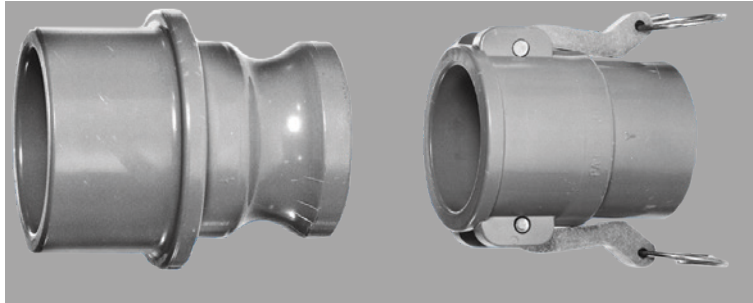
- Nonflammable and self-extinguishing
- UV stable in the visible spectrum
- NSF compliant material
- Temperature range under normal conditions -20°F to 300°F



PVC Couplers and Adapters

1/2" – 3"

- Use with PVC pipe
- Easy to install
- Socket solvent weld (cement)
- Stainless steel handles, rings & pins
- EPDM gaskets standard
- Economical
- Weather & corrosion resistant



Santoprene® Dust Caps and Plugs

2", 3", 4"

- Use to cap off pipes, keeps interior clean and dry
- Does not hold pressure
- Low cost
- Color options available
- Stainless steel arms, pins and rings standard
- Protects mating fittings



Stainless Steel and Brass Couplers and Adapters

Stainless Steel: 1/2" – 4"

Brass: 1/2" – 3"

- 304 SS and 316 SS grades available
- Interchangeable with other couplers and adapters manufactured to MIL-spec
- Buna-N gaskets furnished standard. EPDM and Viton® also available
- Chemical resistant (Refer to chemical resistance table for specific recommendation)

