

SB Series Simplex Basket Strainers

1/2" TO 4" PVC, CPVC, GFPP BLACK, GFPP PLATINUM AND EASTAR®

KEY FEATURES

- Available in PVC, CPVC, GFPP and Eastar®
- True Union Design
- Ergonomic Hand-Removable Cover
- In-Line or Loop Connections
- External Cover Threads
- Integral Flat Mounting Bases
- PVC or CPVC Baskets Standard
- NSF / ANSI 61 and NSF / ANSI 372 Listed

OPTIONS

- Stainless Steel, Monel®, Hastelloy® and Titanium Strainer Baskets
- Pressure Differential Gauge and Switch
- Baskets Available with Perforated or Mesh Liners

MATERIALS

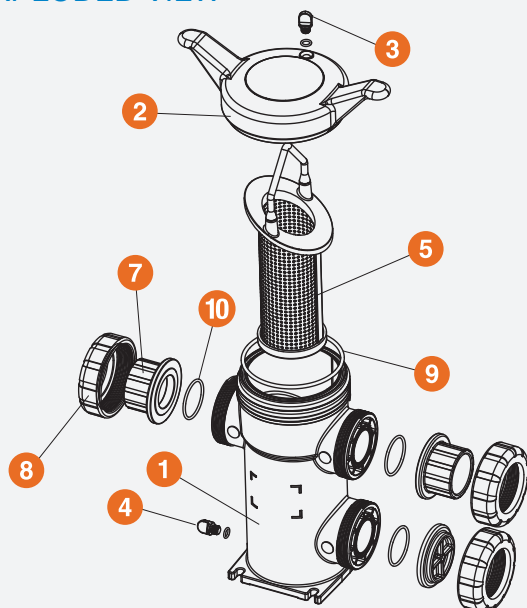
- PVC Cell Class 12454 per ASTM D1784
- CPVC Cell Class 23447 per ASTM D1784
- GFPP Cell Class 85580 per ASTM D4101
- Eastar®
- FPM and EPDM O-Ring Seals



Certified to
NSF/ANSI 61 & 372
PVC and CPVC

TECHNICAL INFORMATION

EXPLODED VIEW



SELECTION CHART

SIZE*	MATERIAL	END CONNECTION	SEALS	PRESSURE RATING
1/2" – 4" (DN15 – DN100)	PVC or CPVC	Socket, Threaded or Flanged	FPM or EPDM	150 PSI @ 70°F 10 Bar @ 21°C Non-Shock
	Eastar®*			100 PSI @ 70°F 7 Bar @ 21°C Non-Shock
	GFPP	Socket Fusion, Threaded or Flanged		150 PSI @ 70°F 10 Bar @ 21°C Non-Shock

* End connections and assembly nuts are PVC.

** PVC and CPVC socket ends available to ISO 727-1 and threaded ends to BS21.

*** PP socket fusion ends per ASTM F2389 and threaded ends per BS21.

Flanged ends available in DIN / EN PN10.



Certified to
NSF/ANSI 61 & 372
PVC and CPVC

SB Series Simplex Basket Strainers

6" TO 8" PVC AND CPVC

KEY FEATURES

- Available in PVC and CPVC
- Ergonomic Hand-Removable Cover
- In-Line or Loop Connections
- External Cover Threads
- Integral Flat Mounting Bases
- PVC or CPVC Baskets Standard
- NSF / ANSI 61 and NSF / ANSI 372 Listed

OPTIONS

- Stainless Steel, Monel®, Hastelloy® and Titanium Strainer Baskets
- Pressure Differential Gauge and Switch
- Baskets Available with Perforated or Mesh Liners

MATERIALS

- PVC Cell Class 12454 per ASTM D1784
- CPVC Cell Class 23447 per ASTM D1784
- FPM and EPDM O-Ring Seals

TECHNICAL INFORMATION

BASKET OPTIONS

PERFORATION SIZES	MESH SIZES	BASKET MATERIAL
1/32"	20	SSTL, Hastelloy, Monel and Titanium
1/16"	40	
1/8"	60	
5/32"	80	
3/16"	100	
1/4"	200	
3/8"	325	
1/8"	N/A	PVC, CPVC and PP
3/16"		

SELECTION CHART

SIZE	MATERIAL	END CONNECTION	SEALS	PRESSURE RATING
6" – 8" (DN150 – DN200)	PVC or CPVC	Flanged*	FPM or EPDM	150 PSI @ 70°F 10 Bar @ 21°C Non-Shock

* Flanged Ends available in ANSI/ASME 150 or DIN/ EN PN10