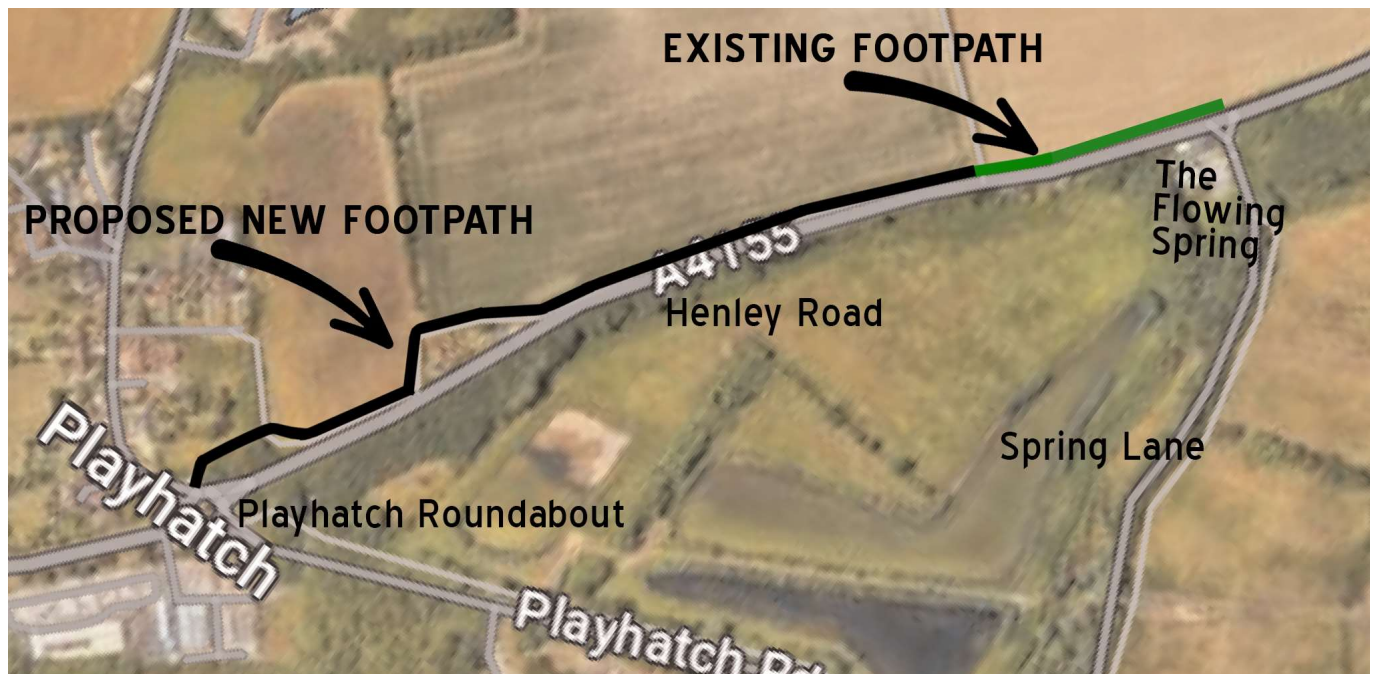




PETITION

A PETITION FOR A FOOTPATH FROM PLAYHATCH ROUNDABOUT TOWARDS THE FLOWING SPRING FOR THE CONVENIENCE AND SAFETY OF PEDESTRIANS



- This petition is to request that the landowner, Phillimore Estate, agrees to a footpath from the Playhatch Roundabout, along the edge of its field, joining up with the existing footpath that continues towards steps opposite The Flowing Spring, making it a convenient, direct and safe route for walkers. See Map above.
- The proposed entry point to the footpath at Playhatch Roundabout is where the Thames Water concrete base is located (///roofs.tone.firmly), continuing through an opening to be made at ///basin.valley.skills and joining the existing footpath at ///create.colleague.runner. The existing footpath continues to the steps opposite the pub at ///bath.waters.gifted and beyond through agricultural land. See Map on next page.

PETITION FOR A FOOTPATH FROM PLAYHATCH ROUNDABOUT ADJOINING THE EXISTING FOOTPATH TOWARDS THE FLOWING SPRING. WE, THE UNDERSIGNED, SUPPORT THIS PETITION.



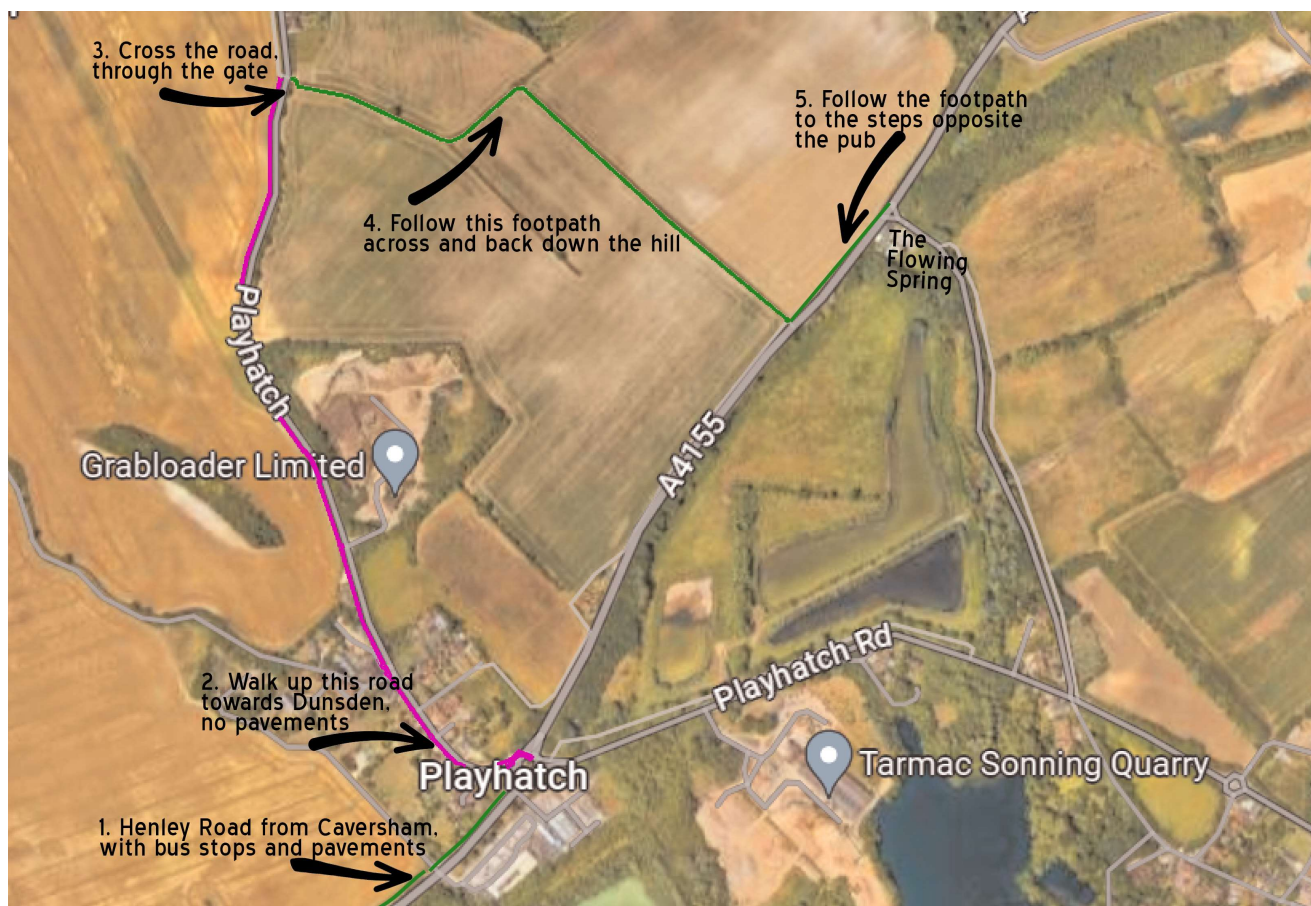
- This petition also requests that Phillimore Estate, as the landowner, accepts responsibility to maintain the footpath to ensure accessibility throughout the year.

BACKGROUND TO THE PETITION

- There are bus stops close to the Playhatch Roundabout. These are the closest bus stops to the pub.
- Every week people walk along the A4155 from Playhatch Roundabout. The speed limit is 50mph (and many exceed it). Many lorries and coaches struggle to pass each other, let alone with pedestrians also sharing the road. There are no pavements or points for pedestrians to take refuge and several blind bends. It is blatantly dangerous.
- Local customers of The Flowing Spring are choosing to drive short distances to get to the pub because there is no convenient pedestrian route. This means more cars on the road, with negative environmental impact, and less exercise.
- Those who might take the bus choose not to because of the walk from the roundabout to the pub on the dangerous road. They too, therefore, drive.
- Some people choose not to visit the pub at all as it is far from easy to get to by public transport and/or walking.
- Currently, to get to The Flowing Spring on foot from Caversham direction, at the Playhatch roundabout, either

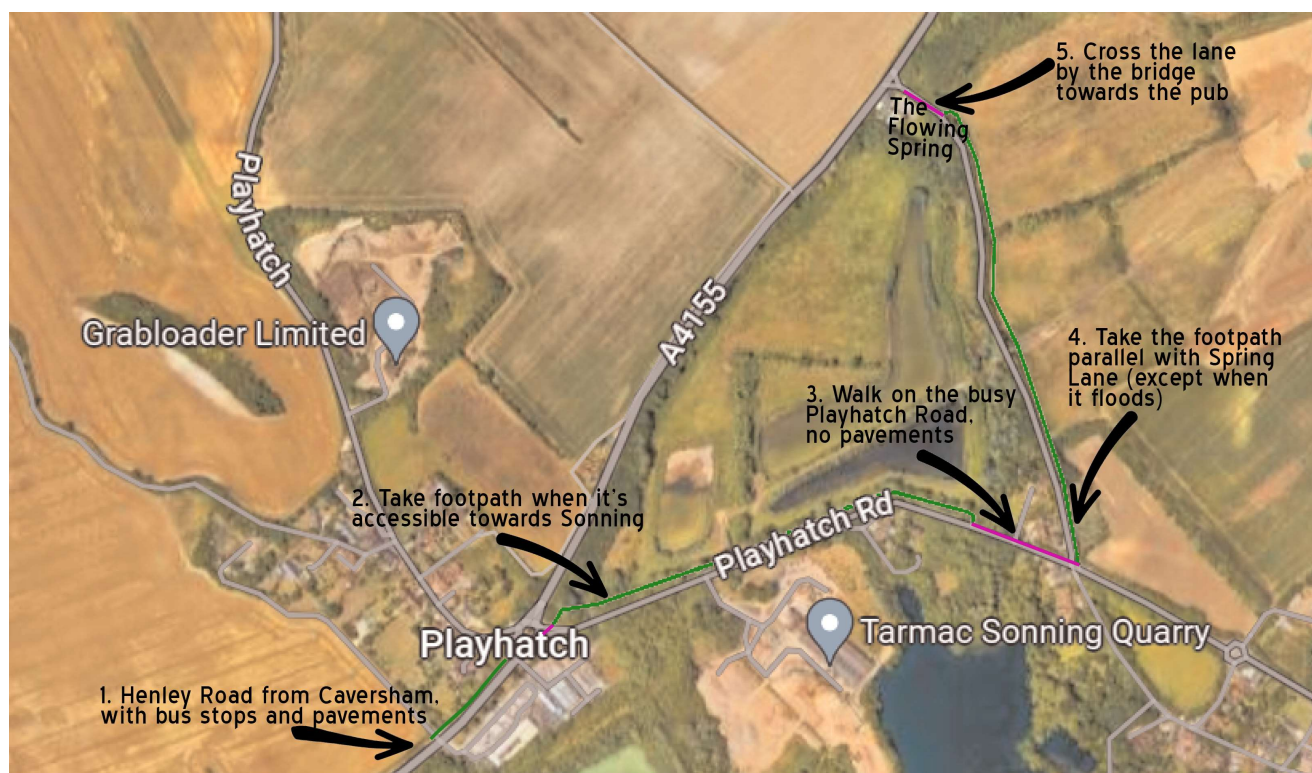
PETITION FOR A FOOTPATH FROM PLAYHATCH ROUNDABOUT ADJOINING THE EXISTING FOOTPATH TOWARDS THE FLOWING SPRING. WE, THE UNDERSIGNED, SUPPORT THIS PETITION.

(i) walk up the hill towards Dunsden (no footpaths nor pavements), cross the road, through the farmer's gate and then follow the footpaths across and back down the hill towards the Henley Road, then parallel with the road to the steps opposite the pub. See Map below.



(ii) or cross the roundabout and follow the footpath along Playhatch Road towards Sonning. This footpath has been neglected and is unusable. Then walk in the road a short distance, then cross Spring Lane, through the gate by the allotments and follow the path parallel with Spring Lane to the bridge close to the pub. Cross the lane at the bridge. This route is inaccessible when flooded. See map on next page.

PETITION FOR A FOOTPATH FROM PLAYHATCH ROUNDABOUT ADJOINING THE EXISTING FOOTPATH TOWARDS THE FLOWING SPRING. WE, THE UNDERSIGNED, SUPPORT THIS PETITION.



- Neither of these routes are attractive to those who wish to take a direct route to The Flowing Spring or further across the hills using other connected paths.
- If we wish to encourage trade to the area and support local businesses, we have to make it easy for prospective customers. The current layout of paths does not help.
- It is a known fact that walking and enjoying countryside views are good for both physical and mental health. Adding this path will encourage more people to walk, whether to The Flowing Spring or simply to enjoy the beautiful countryside our parish has to offer.
- There seems to be little or no reason to not have a path along the edge of the field, bordered by the Henley Road hedging. It's hard to believe this last metre strip of land has any agricultural value.
- The residents of 1 and 2 Homestead Cottages, whose properties back on to the field concerned, have no objections to having walkers pass the rear of their properties. We have their consent in writing.
- The Draft Neighbourhood Plan for our parish (Eye and Dunsden) clearly states as one of its policies (ED-CI3, Public Rights of Way): "New **pedestrian and cycle routes which will contribute to or where practicable improve its connectivity** and maintenance and maintain or enhance the visual characteristics and biodiversity **of the Network, will be supported...**"
- The Draft Neighbourhood Plan for our parish (Eye and Dunsden) clearly states as one of its policies (ED-CE1, Community Facilities and Services): "**Proposals that improve the quality and provision of the following facilities and local infrastructure**

PETITION FOR A FOOTPATH FROM PLAYHATCH ROUNDABOUT ADJOINING THE EXISTING FOOTPATH TOWARDS THE FLOWING SPRING. WE, THE UNDERSIGNED, SUPPORT THIS PETITION.

proposals (listed in Appendix XIII) in the Plan area will be supported.... Including pedestrian safety and/ or new or improved permissive paths, footpaths....

Appendix XIII specifies The Flowing Spring as one of its valued facilities

- The matter of the extended footpath has been raised a number of times at parish council meetings and privately with parish councillors. Nothing has happened so we're running our own campaign. Thank you for your support.