

JANUARY 2026

SEMLOH

Newsletter



A message from the Directors

As we step into the new year, we're genuinely excited about what lies ahead for our organisation, our community centre, and the people we support.

This year is about momentum. It's about building on the foundations already in place and bringing fresh energy, new ideas, and innovative programs into the community centre space. We see the centre not just as a workplace, but as a place of connection, growth, creativity, and opportunity for clients, families, and staff alike.

Over the coming months, we'll be introducing new programs, expanded activities, and creative initiatives designed to better support our clients and strengthen the sense of community that already exists here. There's a strong focus on innovation this year, thinking differently, trialling new ideas, and continuing to evolve how we support people in meaningful and practical ways.

We're also committed to ensuring this growth is sustainable and intentional. That means clear direction, consistent systems, and an environment where people know what's expected and feel confident in the way we operate. Strong structure allows creativity to flourish, and that balance is something we're excited to keep building together.

This year presents real opportunity to grow professionally, to contribute ideas, and to be part of something that continues to develop and improve. We're looking forward to seeing the community centre come alive in new ways and to working alongside a team that genuinely cares about the people we serve.

Thank you for being part of this journey. We're excited about the year ahead and can't wait to see what we achieve together.

Ben & Jess

www.semlohsupportservices.com.au

DECEMBER ADVENTURES



Semloh's explorers have been quite busy this month! From soaking up the scenery at Lake Cressbrook and Crows Nest Falls to striking up some fun at bowling, enjoying a refreshing swim, and stepping back in time at Cobb & Co, there's been something for everyone. We also shared good food and great company at a BBQ and treated ourselves to a cosy visit to a Danish café. These outings have been a wonderful way to connect, explore, and make lasting memories around our community and with each other.



BOWLING & BBQ

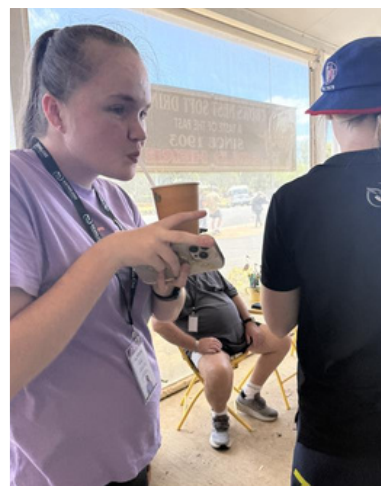




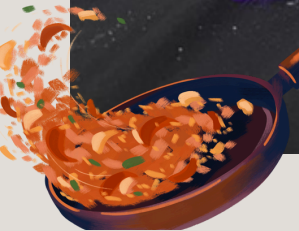
COBB & CO MUSEUM



CROWS NEST



Cooking & Crafts



Meet some of our Professional Care Workers

Kylie Paton

Dream Holiday - Tangalooma Island

Favourite Song - Anything AC/DC. I love listening to all kinds of music

Favourite Food - Chicken Carbonara

Favourite Team- Melbourne Storm

If you could have a superpower, what would it be? - Heal sick people

COMMUNITY ENGAGEMENT
OFFICER

Zoe Robson

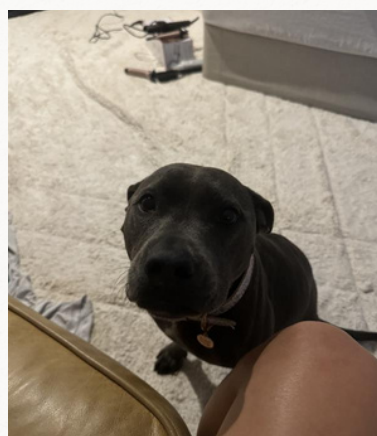
Favourite Sport Team - Melbourne Storm

Favourite Song - Damage by Tams

Favourite Food - Chicken Tenders

Dream holiday - Maldives

If you could have a superpower, what would it be? - Invisibility



Harper

SUPPORT WORKER



SEMLOH
CITY | COUNTRY | COAST

CELEBRATING OUR ATHLETES

One of the things we're most proud of as an organisation is the breadth of people and talent within our team — and this year, that pride extends well beyond the workplace and onto the rugby league field.

We're incredibly excited to congratulate several of our staff who will be representing elite rugby league programs across Queensland this season. Balancing the demands of high-performance sport alongside work, study, and life commitments takes a huge amount of discipline, resilience, and character — and these are qualities we see reflected in their work every day.

A huge congratulations to:

- Nulla Budden – representing the Ipswich Jets in the Hostplus Cup
- Brock Diment – representing the Western Clydesdales in the Hostplus Cup
- Brock Patti – representing the Western Clydesdales in the Hostplus Cup
- Eliza Morcombe – representing the Western Clydesdales in the BMD Women's Premiership
- Lucy Davis – representing the Western Clydesdales in the BMD Women's Premiership
- Zoe Robson – representing the Western Clydesdales in the Harvey Norman Under 19s Premiership
- Taylah Horrobin – representing the Western Clydesdales in the Harvey Norman Under 19s Premiership

To see members of our team competing at this level is incredibly inspiring — not just for us as directors, but for the wider community and the clients we support. These athletes embody many of the same values we hold close as an organisation: commitment, teamwork, resilience, and the willingness to keep showing up and doing the work.

We'll be cheering you on throughout the season and are incredibly proud to support you as you represent your clubs, your communities, and yourselves on and off the field.



Happy Birthday

This month, we're sending warm and joyful birthday wishes to all our amazing staff and clients celebrating in January! May your day be filled with happiness, laughter, and everything you love. Thank you for being a special part of our community - here's to another fantastic year ahead!



Riley



Lauren



Ethan



Maddison



Elizabeth



Kerrie



Taylah



Kaed



Jessica



JANUARY STAFF ANNIVERSARIES



This January, we're excited to celebrate the work anniversaries of our dedicated Semloh team members! Your continued commitment, passion, and hard work make all the difference. Thank you for being an essential part of what we do - we appreciate everything you bring to the team. Here's to your achievements and many more successful years ahead!

4 YEARS WITH SEMLOH



Renee

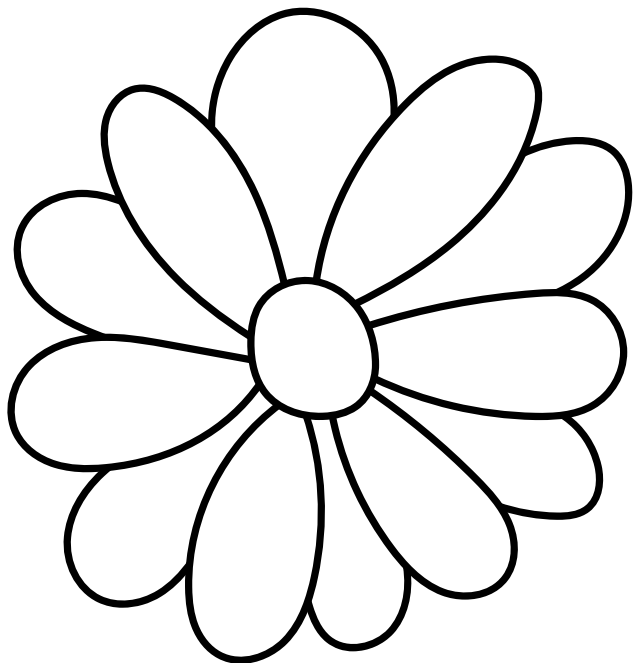
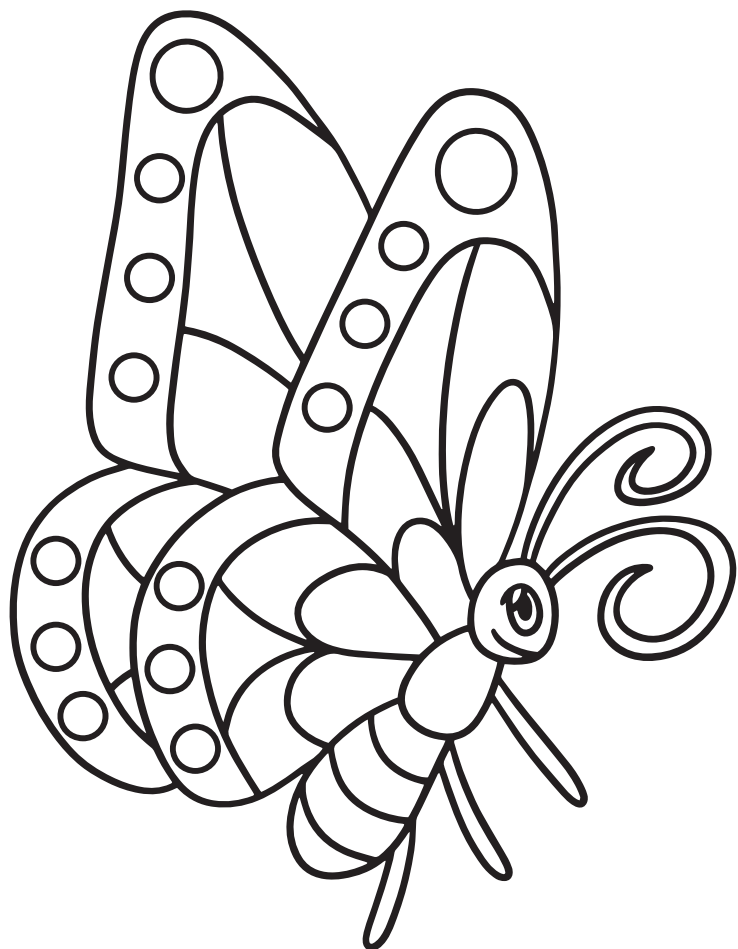
1 YEAR WITH SEMLOH



Lavinia

SEMILOH KIDZ

COLOUR ME IN





Colors Word Search

Can you find the words hidden in the puzzle?

| | | | | | | | | | | | |
|---|---|---|---|---|---|---|---|---|---|---|---|
| A | Y | M | S | C | I | E | N | R | E | D | Q |
| O | E | R | E | A | T | O | O | K | N | R | F |
| I | L | S | A | B | L | A | C | K | G | Y | B |
| N | L | S | W | R | R | M | P | T | P | N | L |
| T | O | T | D | O | E | E | G | J | I | R | U |
| O | W | D | E | W | M | O | R | A | N | G | E |
| R | R | H | P | N | U | G | A | R | K | E | A |
| Y | F | A | I | A | G | F | Y | U | T | O | P |
| H | M | M | D | T | I | R | R | G | O | L | D |
| P | U | R | P | L | E | K | E | M | E | L | H |
| D | V | T | U | A | D | Z | C | E | E | E | Y |
| P | S | I | L | V | E | R | U | A | N | S | T |

RED

YELLOW

WHITE

BLUE

ORANGE

BLACK

PINK

PURPLE

GREEN

GREY

BROWN

SILVER



I SPY SUMMER



CONTACT US



Website:

www.semlohssupport.com



@semlohssupportservices

Email:

info@semlohssupport.com.au

Phone:

(07) 4613 6413

Address:

623-625 Ruthven Street,
Toowoomba City, QLD 4350

LEAVE US A 5 STAR
REVIEW ON GOOGLE

