

i'll
remember
you®



Sharing memories *and telling stories* of a special life

Saying Goodbye

It's never easy, but saying goodbye is a natural and healthy part of the grieving process.

At our funeral home, this can take place in a number of ways. From a more traditional ceremony joined by family and friends, to a private, meaningful service with your immediate family.

Regardless of how you want to say goodbye, our professional staff is ready to serve.

Sharing the Story

A caring parent, a lifelong friend - every life tells a story.

Our team will help you share that story in a unique and appropriate way. We believe in celebrating the life of the individual by recognizing how they touched the lives of others. This is the story that we all have to share.

Cremation Choices

Choosing cremation offers several choices for service and memorialization. The following considerations will help you determine the type of event that would be most meaningful to you, your family, and friends.

Signature Services

From the moment your loved one enters our care, our professional staff is committed to serving with compassion and dignity. Our Signature Service includes:

- Creative planning of meaningful tribute services
- Coordination with clergy, florists, cemetery, crematory, or other complimentary service providers
- Acquisition and completion of necessary government forms including death certificates, Veterans benefit forms and other required documents
- Assistance with insurance and/or U.S. Veterans benefit claims
- For further peace of mind, we require our families to provide a recent photo ID for positive identification of your loved one
- Memorial website offering a permanent online memorial to your loved one
- Custom DVD tribute video for viewing during visitation or service
- Online grief recourses available at magnoliafuneralhome.net

Choosing a Final Resting Place

Following the service and the cremation process, there are several options for choosing a peaceful, final resting place, including:

- H** Home - Keeping in your private residence
- N** Niche - Designated place in a church or mausoleum
- B** Burial - Traditional placement in a cemetery
- S** Scattering - Spread in a special location



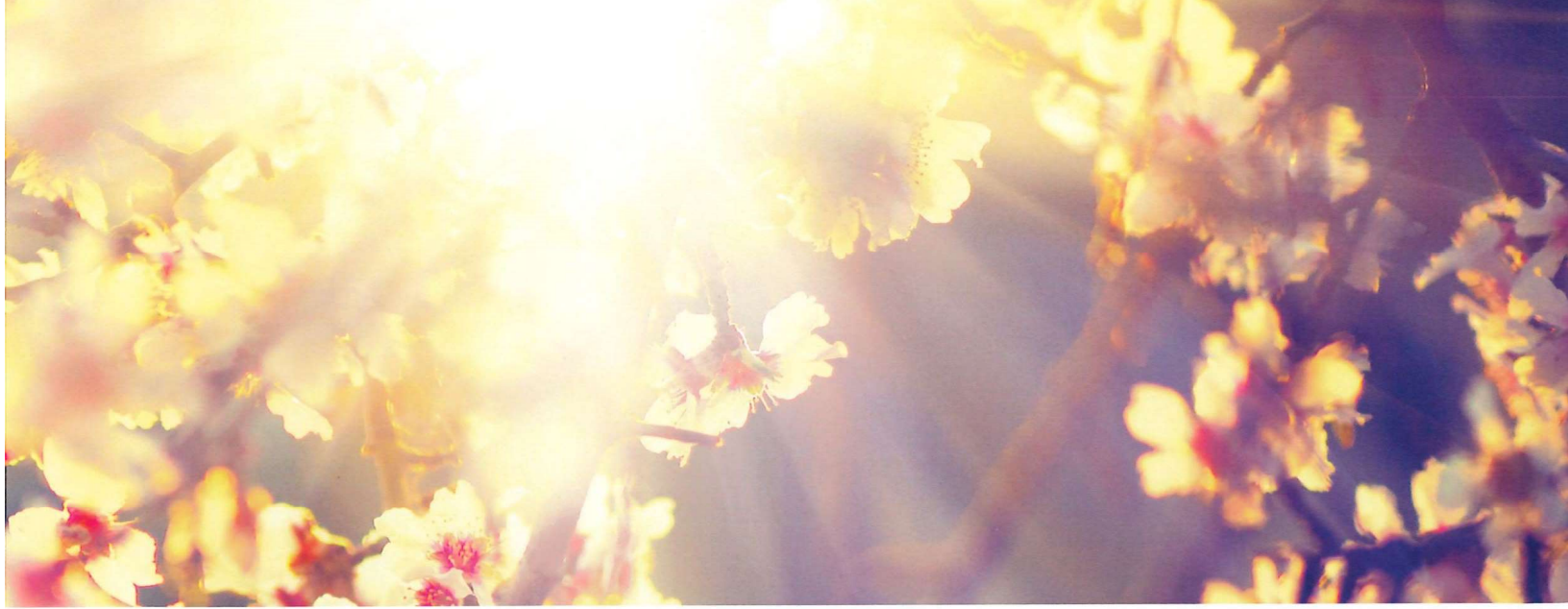
Traditions

Complete Service with Cremation

Share your fondest memories with family and friends. Visitation will be scheduled the day before the funeral service. Our staff will arrange for a ceremony at a church or place of worship, or you can choose to have a ceremony in our funeral home.

Our signature services are included from the minute we take your loved one into our care. Our professional staff will work through all of the details to create a personalized tribute as unique as the life being celebrated.

Our professional staff can also assist with committal services for inurnment, burial, or scattering in a local cemetery.



- Basic service of Funeral Director and staff
- Transfer of remains to the Funeral Home (within 50 miles) additional \$2.50 per mile
- Embalming, dressing, cosmetics and casketing
- Use of facilities and staff for visitation (within 50 miles) additional \$2.50 per mile
- Use of equipment and staff for funeral service (within 50 miles) additional \$2.50 per mile
- Use of funeral coach for funeral service if needed
- Premium memorial package (register book, memorial folders, 12 laminated obituaries, thank you cards, custom video tribute DVD)
- Cremation fees
- Solid Wood Rental Casket

Package pricing does not include an urn, certain cash advance items (obituaries, death certificates, etc.) and services.

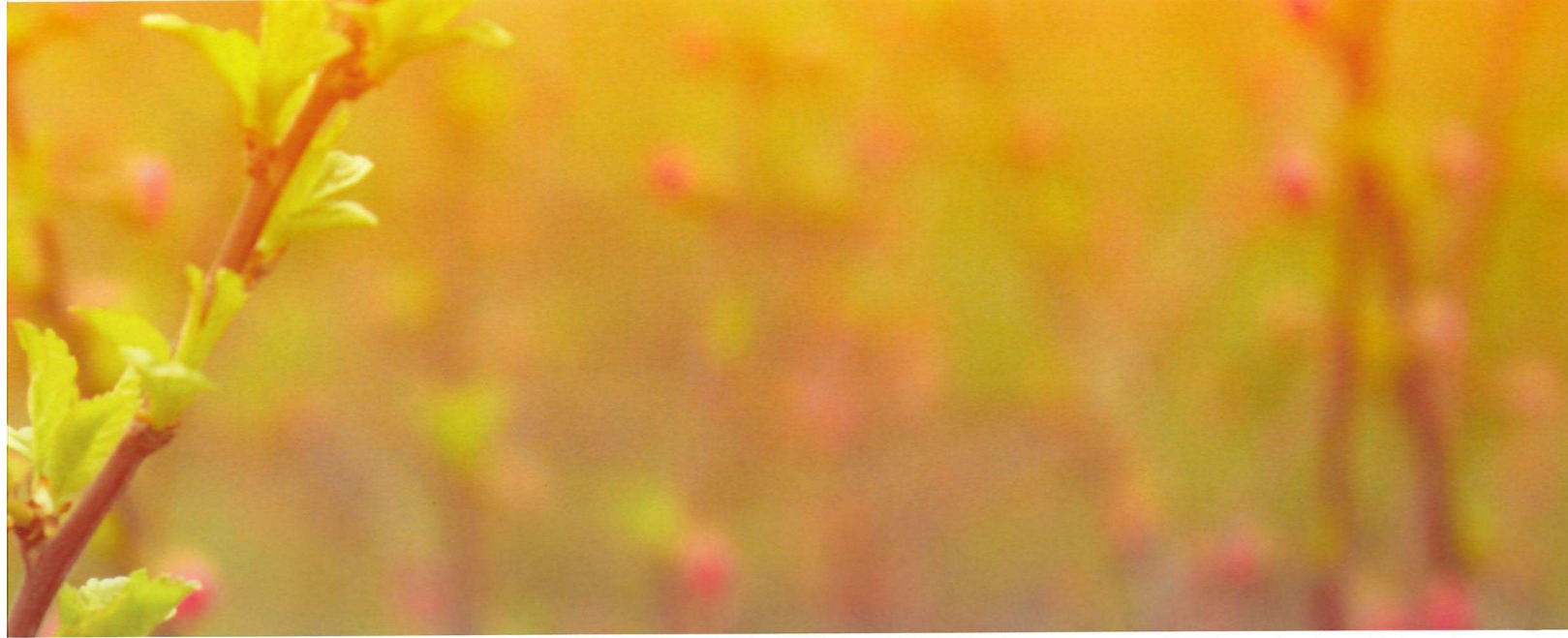


Tribute

Memorial Service and Cremation

The Tribute memorial service allows for an event to be scheduled at a time convenient for everyone so that family and friends can gather, share and reflect on your loved ones life. The memorial service can provide families with an opportunity for reflection and remembering. Our professional staff can assist with special musical selections, video-tributes, or memory tables where memorabilia may be displayed that would properly reflect your loved one and the life they've lived.

Our signature services are included from the moment we take your loved one into our care.



- Basic service of Funeral Director and staff
- Transfer of remains to the Funeral Home (within 50 miles) additional \$2.50 per mile
- Use of equipment and staff for memorial service (within 50 miles) additional \$2.50 per mile
- Basic memorial package (register book, memorial folders, 12 laminated obituaries, thank you cards, custom video tribute DVD)
- Cremation fees

Package pricing does not include an urn, certain cash advance items (obituaries, death certificates, etc.) and services.



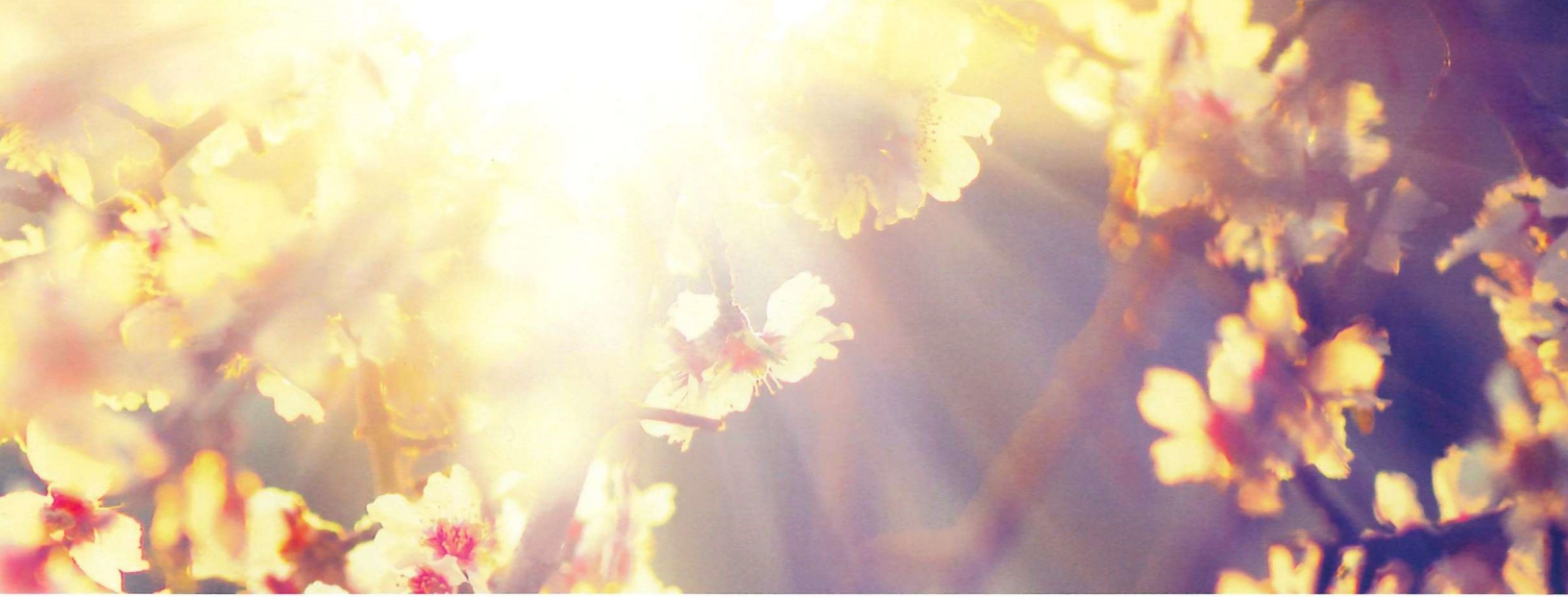
Reflections

A Private, Informal Goodbye with Cremation

If you prefer to say goodbye in a simple, private setting, the Reflections Life Tribute offers a private visitation for your immediate family.

While this event is limited, our signature service is included from the moment we take your loved one into our care.

Following this life tribute and the cremation, you might consider hosting a memorial service to enjoy the support of family and friends at a time more convenient and less stressful.



- Basic service of Funeral Director and staff
- Transfer of remains of the Funeral Home (within 50 miles) additional \$2.50 per mile
- Other preparations of remains
- Use of facilities and staff for private family viewing (up to one hour at Funeral Home) additional \$2.50 per mile
- Cremation fees

Package pricing does not include an urn, certain cash advance items (obituaries, death certificates, etc.) and services.



Non-Ceremonial Cremation Only

- Basic service of Funeral Director and staff
- Transfer of remains to the Funeral Home (within 50 miles) additional \$2.50 per mile
- Cremation fees
- Brown temporary plastic container

Package pricing does not include an urn, certain cash advance items (obituaries, death certificates, etc.) and services.

Casket Selections



Dayton
Poplar
Dark Satin Finish
Crème Basketweave Interior



Falcon
Poplar
Medium Satin Finish
Rosetan Crepe Interior



Lonkay
Poplar Veneer
Medium Satin Finish
White Satin Interior



Kenton
Veneer
Dark Satin Finish
Rosetan Crepe Interior



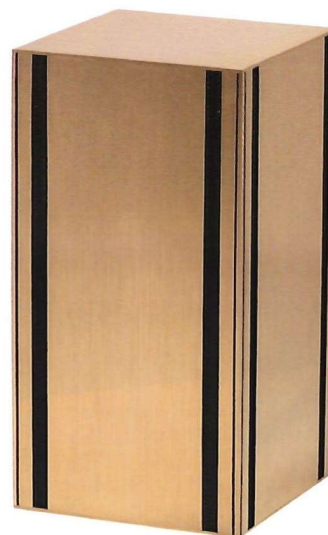
Lancaster
Veneer
Light Satin Finish
Rosetan Crepe Interior

Urn Selections

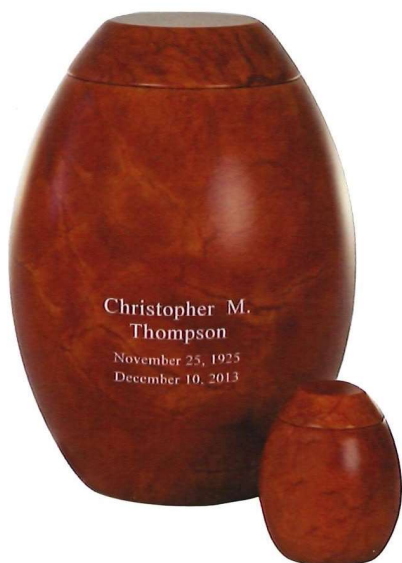
Tier 1



Eternity
Cherry urn with raised panels.
Engraving options available.
71214271



Fidelity Roma
Cast bronze urn in simple design.
Shown w/ optional personalization.
71007334



Madrid & Madrid Keepsake
Alabaster urn shown with optional personalization
3AAM1 / 3AAMKS




Blue Sapphire & Blue Sapphire Keepsake
Traditional cloisonné design with intricate pattern
3CL826 / 3CL827

H Home

N Niche

B Burial

S Scattering

 Personalize with engraving

H
N
B
S
➔



Venice & Venice Keepsake

Brass urn with pewter finish in classic design
3TB100 / 3TB100K

H
N
B
➔



Avon Cherry

Cherry hardwood urn with natural finish
3WW100

H
N
B
➔



Mallorca & Mallorca Keepsake

Solid marble urn
3TB400 / 3TB400K

H
S
➔



Family Tree Scattering Urn

Cherry scattering urn with engraved image & quote
3DS333

H Home

N Niche

B Burial

S Scattering

➔ Personalize with engraving



H
N
B
S

Seaside

Handmade stained glass memory chest
3GMBBLU



H
N
S

Blossoms and Butterflies & Blossom Keepsake

Composite statuary urn with 3D detail
71085977 / 71085978



N
B
➔

Green Marble & Green Marble Keepsake

Cultured marble urn in green.
Engraving options available.
3WM450 / 3WM450KS



H
N
B
S

Mother of Pearl & Mother of Pearl Keepsake

Brass urn with natural mother of pearl.
Charm not included.
71009855 / 71009860

H Home

N Niche

B Burial

S Scattering

➔ Personalize with engraving

Memorial Jewelry

Sterling Silver



Cross
w/ Clear CZ Stone
3EMJ11



Open Teardrop
w/ Clear CZ Stone
71085935



Swirl w/ Birthstone
Shown w/ February
71085938



Toggle Closure Charm
Bracelet with Heart w/
Clear CZ Stone
71085964



Heart
w/ Clear CZ Stone
3EMJ3



Etched Teardrop
3EMJ6



Signet Ring
71085965



Ladies Ring w/ Birthstone
Shown w/ March
3EMJ8

Stainless Steel



Open Heart
11031542



Etched Cylinder
11031565



Carbon Fiber Cross
11031544



Large Teardrop
11031560



Etched Cross
11031566



Small Cross
IP Plated
11031562



Small Heart
IP Plated
11031559



Carbon Fiber Bracelet
11031540

All jewelry holds small amounts of cremated remains.