

AUCTION - Jimmie & Melissa Dailey

Saturday, August 9, 2025 - Sale Time 9:30 a.m. CST

Online and live auction to start at 12:00 noon via Equipmentfacts.com

Location: From Stratton, NE-Hwy 34 & Veteran's Hwy go 2 miles north on blacktop to Y intersection, turn west on Road 714, go 2 1/2 miles to sale site. Bring your trailers to get loaded sale day. Lunch by Up In Smoke BBQ



2014 New Holland T7-270, MFD, 380/85R30 fronts, 480/80R42 rears, quick hitch, sun roof, double door entry, touch screen controls, CVT transmission, auto command, 4 remotes, front fenders, 270 HP, 6 cyl, turbo charge, 4814 hours, nice, clean tractor, SN 2DB222240, sells with NH 875TL loader w/grapple, 8' bucket, like new -E
1996 JD 7800-19 sp., power shift, 3 hyd., 540/1000 PTO, new interior, glass, & seat w/JD 740 Classic loader & grapple, 8' bucket, shows 8803 hours, runs good-E
JD 4240, 8 sp. power shift, 2 hyd., shows 8472 hours, runs and drives, hyd. clutch problems-E

JD 8630, 4WD, 3 pt., 3 hyd., quick hitch, 1000 PTO, quad-range, w/Leon 13'-6 way dozer, 6725 hrs., runs good-E
MM U, propane, hand crank, does not run
Ford 600 w/loader-could run
JD A w/dirt scoop-non-runner
MF 65 w/loader-non-runner
JD A w/loader, non-runner

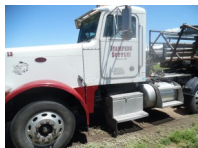
TRAILERS & CONTAINERS

2003 Wilson Combination cattle & hog pot 53' x 102", triple axle, spring ride, no lift-E



1996 Transcraft 48' x 96" flatbed-spread axle, hay racks-E
1988 Ravens 48' x 102" flatbed, spread axle, air ride-E
1993 Jet 26' grain trailer, single hopper, tandem axle-E
2012 PJ 30' gooseneck, 25' & 5' ramps, tandem axle, duals, wood floor, tool box-E
Finishline 6' x 10' & 7' x 12' tilt trailers, good wood floor-E
1-40' & 2-20' storage containers
Volzke 20' lowboy, needs new wood floor
JD Donahue trailer 2 Pickup box trailers

FANTASTIC FARM & LIVESTOCK EQUIPMENT



SEMI'S, FARM, PICKUP, COLLECTOR
2005 Peterbilt 379, Cummins ISX 600, 10 sp., day cab, 100K on OH, 1.4 million miles, runs good-E
2003 Peterbilt 379, C15 6NZ Cat, 10 sp., Pusher axle, Bully Dog chip, 160K on Platinum OH, 1.4 million miles, runs good-E
2000 Peterbilt 379, EXT hood, Cat C15 3406 E Model, 18 sp., 80 K on Platinum OH, 1.8 million miles, runs good-E
1991 IHC 4900, cab & chassis, single axle, 7 sp. Spicer, needs batteries, runs-E

Old Truck-year & make unknown
Ford F600, 16' box & hoist, runs good
1950 Chevy 3800 flatbed, 4x4, doesn't run-E
1977 Ford, 2 Ton, 16' steel box & hoist
1968 Ford F600/steel flatbed, & hoist
Chevy C65, w/Sudanga grain delivery box w/top auger-doesn't run
1941 Chevrolet truck w/grain hopper, front window crank-restoration project-E
Ford Model F3 wrecker truck, parts or restore-E
1992 Chevy 2500, service bed, doesn't run
Chevy C50, cab & chassis, tornado damage

SHOP ITEMS & TOOLS

Lincoln Arc Welder-Weldan power 225, portable on 2 wheels, w/Wisconsin engine-works great
Black Diamond 60 gallon upright air compressor
2 Trailer loads of good tools

FARM MACHINERY



CrustBuster TS 39x10-30' drill, 10" spacing, nice drill-E
Sunflower 21' chisel w/Degelman harrows, good-E
Quinstar 28' fallow master w/pickers-nice-E
Agco Tye 15' no till drill w/ coulter cart, 8" spacing, Schaffert seed rebounders-good condition-E
Noble 40' field conditioner w/harrows-E
Dual 7000-5 shank 3pt. HD deep ripper-E
Flex King 5x5 w/Degelman harrows, like new blades-E
Flex King 3x5 JD 40 Manure Spreader-E
Miller 25' offset disk-E Miller 15' offset drag disk
Suiter Mfg. pivot track closer for dump truck-new-E
JD 606, Woods Brushbull 6', JD 205 rotary mowers
Agtronic Inc. 27,000 BTU- PTO generator
Tucker Speed Mover-HD, 10', cement filled weights-E
J&M 875 grain cart, 1000 PTO, good tires, minor damage do to tornado, fixable, was in excellent shape-E
Elston gopher getter, 3 pt., stabilizer blade-E
Log splitter w/B & S 900 engine, hydraulic
1000 Gal. nurse tank, Honda motor, water only-E
Pivot track closer-3 pt. 5 disc-good shape-E
JD 14' 8200 grass drill w/fertilizer, alfalfa boxes
JD 12' drill, 7" spacing, grass seeder-needs tires
12' Western Pack, steel teeth press wheels-good
Fertilizer tank to be converted into fuel tank
15' 3 section pull type harrow Old hay rake
3 pt. 3 shank ditcher & 6 row wide cultivator
2 sets of saddle tanks for JD 40-50 series
Duetz 4 cylinder diesel reuse pump-ran when parked
500 gal. fiberglass tanks, water only, some for PU's
3 drill fill augers 4-500 gallon propane tanks
Otter 10' dozer for JD 30 & 40 series tractors

FEED DELIVERY TRUCK, FEED TRUCK, LIVESTOCK EQUIPMENT & OAT HAY



2002 International C10 Cat, 9 sp., tandem w/pusher axle, 15 ton 2 section box, Tommy Lift, 22'8" discharge auger, runs good-E
1985 Ford LN8000, 3208 Cat w/rebuilt transmission, new batteries, Oswalt 525 mixer box, scales, needs new cab-tornado damage, aside from cab, truck works great-E
Knight 3030 Reel Auggie Mixer Wagon, Digi Star scales, bent discharge tin-works great-E
Wire winder w/B&S engine-works good
Chevy C70 w/16' chuckwagon box, 5x2 sp.
DW Machine 30'-6 bale single arm bale mover
JD 40 manure spreader, 5x12, good floor-E
Continuous Fence-(42) 1" & (15) 1 1/2"-new, (8) 1 1/2" square & (14) 1" used sections
60-10' sections of curved tin-makes 13000 bu. bin
Slant bar feed panels-3-10', 5-20'-new
Daniels, HW Brand, Big Valley-appx. 50 gates
NEW & used 8' to 16' & walk-thru
Oil field pipe: 2 3/8"-120 joints, 2 7/8"-125 joints
6" pipe-20' to 8'-10 are ready for gates
9 HD 20' steel feed bunks-good
Pearson squeeze chute

Linn stationary 14' loading chute-nice-E
2- 150 Bushel creep feeders
Foremost 2 to 1 double 30' alleyway-E
Foremost palpation cage-2 doors
Hydraulic squeeze chute Model 1024-E
Big Valley squeeze chute-manual-good-E
Big Valley calf cradle-good shape
2 sets WW working system-4 gates
5 covered lick tanks w/wheels
12' Portable loading chute
2 HiQual round, 1 square bale feeders
21'x11'tin hog/cattle shed on skids-nice
2-40 & 1-60 bushel hog feeders
Steel calf/hog sheds-1 lg & 1 small
WW 6x20 stock trailer, needs floor-dents
Heinke hammer mill-bent hopper
2-3000, 1-2500, 1-1500 gal. Fiberglass tanks w/pumps & hose-liquid feed only-E
Guard Rail-appx. 70 - 14'
Railroad ties, bridge planks, corner posts
Portable panels -several Creosote posts
Bale unroller & mover Cube feeders
175 round bales of 2025 Oat Hay

****Many More Items That Are Not Listed****

Vrbas Auction Service * Palisade, NE

Bryan Vrbas: 308-340-6750 or 308-285-3240

Full Sale Bill and Pictures at www.vrbasauktion.com

Like us on Facebook: Vrbas Auction Service

AUCTIONEERS NOTE: An outstanding auction you won't want to miss!! Jimmie & Melissa are moving and will be offering a great lineup of farm & livestock equipment that's ready to go to work. The items marked **E** will be offered live and online through Equipmentfacts.com. Jimmie's cell is 308-380-9880.

TERMS: Announcements made sale day take precedence over anything written or implied. Cash or check accepted, no credit cards. Payment in full sale day. No property removed until settled for. Not responsible for accidents or theft of items.