

STONEFIELD

H O M E .com



Southpointe Phase 10

Introducing Southpointe in Los Banos! Discover our newest phase featuring open and spacious new floor plans ranging from 1213 to 2522 sq. ft. Thoughtfully designed for every lifestyle, these homes offer 3 to 5 bedrooms and an array of amenities including gourmet kitchen with granite counters and energy saving appliances. Conveniently located near several shopping centers with easy highway access and close proximity to Pacheco High School, Grasslands Elementary and Los Banos Jr. High School. Join us in welcoming the Southpointe community to Los Banos and find your dream home today! Don't miss out on this incredible Community. Call us to schedule your tour today! Your journey begins at Stonefield Home.

Los Banos, California



NOW SELLING



STONEFIELDHOME.COM



The Fasano

at Southpointe

1,213 sq. ft.

3 Bedrooms

2 Bathrooms

2 Car Garage



ELEVATION A

*Shown with optional
stone and s-tile roof*



ELEVATION B

*Shown with optional
stone and s-tile roof*



The Fasano

The Argent

at Southpointe

1,436 sq. ft.

3 Bedrooms

2 Bathrooms

2 Car Garage



ELEVATION A

*Shown with optional
stone and s-tile roof*



ELEVATION B

*Shown with optional
stone and s-tile roof*



The Argent

The Ashington

at Southpointe

1,750 sq. ft.

3-4 Bedrooms

3 Bathrooms

2 Car Garage

STONEFIELDHOME.COM



ELEVATION A

*Shown with
stone and s-tile roof*



ELEVATION B

*Shown with
stone and s-tile roof*



ELEVATION C

*Shown with
stone and s-tile roof*



The Ashington

The Santa Cruz

at Southpointe

1,810 sq. ft.

4 Bedrooms

3 Bathrooms

3 Car Garage

STONEFIELDHOME.COM



ELEVATION A

*Shown with
stone and s-tile roof*



ELEVATION B

*Shown with
stone and s-tile roof*



ELEVATION C

*Shown with
stone and s-tile roof*



The Santa Cruz

The Monterey

at Southpointe

1,960 sq. ft.

4 Bedrooms

2 Bathrooms

3 Car Garage

STONEFIELDHOME.COM



ELEVATION A

*Shown with
stone and s-tile roof*



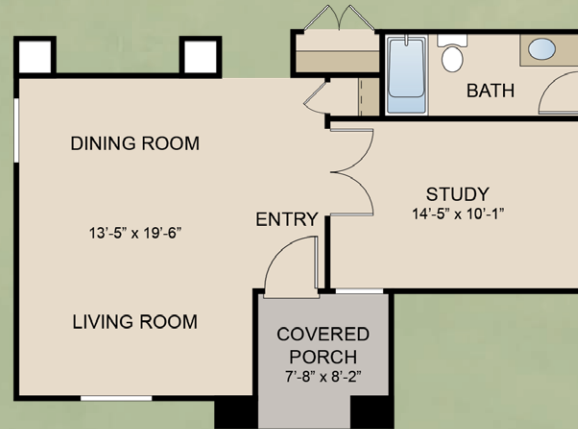
ELEVATION B

*Shown with
stone and s-tile roof*



ELEVATION C

*Shown with
stone and s-tile roof*



STUDY OPTION



The Monterey

The Caledonia

at Southpointe

1,969 sq. ft.

4 Bedrooms

2-3 Bathrooms

2 Car Garage

STONEFIELDHOME.COM



ELEVATION A

*Shown with
stone and s-tile roof*



ELEVATION B

*Shown with
stone and s-tile roof*



ELEVATION C

*Shown with
stone and s-tile roof*



The Caledonia

The Stella

at Southpointe

2,059 sq. ft.

4-5 Bedrooms

3 Bathrooms

2 Car Garage

STONEFIELDHOME.COM



ELEVATION A

*Shown with
stone and s-tile roof*



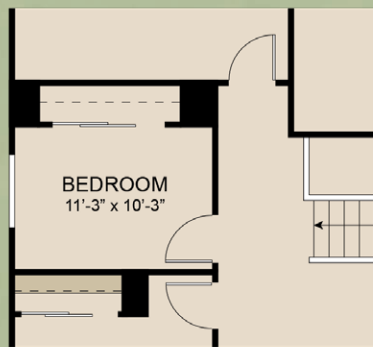
ELEVATION B

*Shown with
stone and s-tile roof*



ELEVATION C

*Shown with
stone and s-tile roof*



BEDROOM 5 OPTION



UPPER FLOOR



MAIN FLOOR

The Stella

The Florencia

at Southpointe

2,522* sq. ft.

4-5 Bedrooms

3 Bathrooms

2-3 Car Garage

*2,752 when opt. den is chosen

STONEFIELDHOME.COM



ELEVATION A

*Shown with
stone and s-tile roof*



ELEVATION B

*Shown with
stone and s-tile roof*

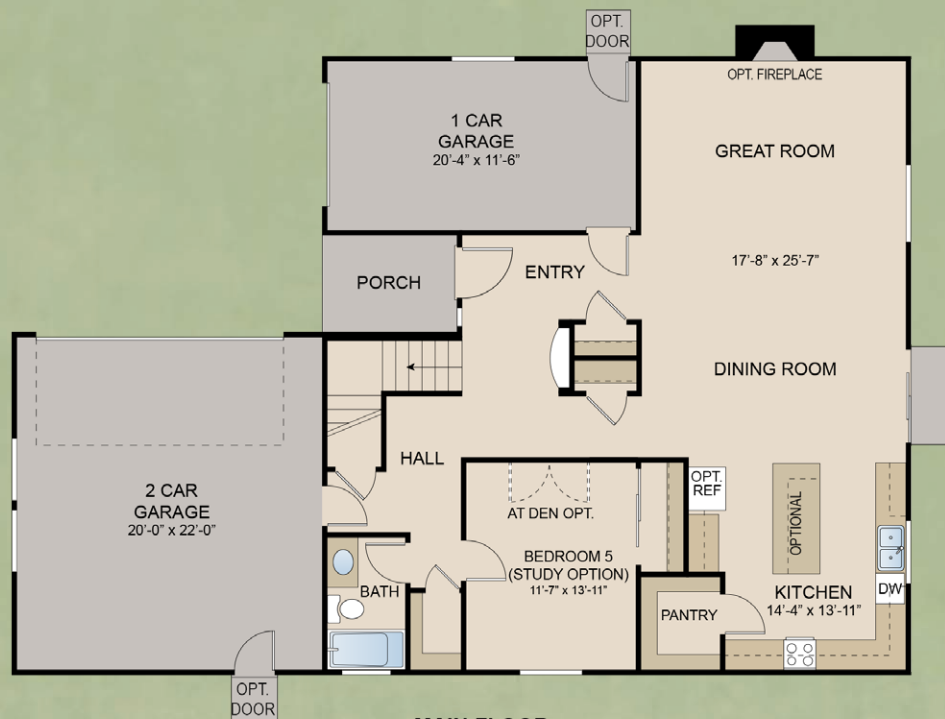
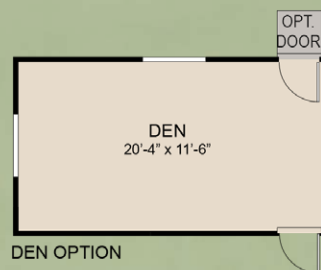


ELEVATION C

*Shown with
stone and s-tile roof*



UPPER FLOOR



MAIN FLOOR

The Florencia

Southpointe Included Features

Interior Features

- Abundant windows for more natural light and ventilation
- Low VOC interior paint
- Pre-wired for cable television in the living room and master bedroom
- Interior laundry room with 220 volt service
- Tankless water heater
- High-value low-E vinyl windows
- High efficiency heating and air conditioning system
- Energy efficient lighting and plumbing fixtures
- Programmable thermostat
- Combination carbon monoxide & smoke detectors
- Fire Suppression System throughout for your safety and peace of mind
- Bathrooms feature countertops with integrated sink
- Low-flow shower heads and faucets

Exterior Amenities

- Architecturally selected exterior color palettes
- Front yard landscaping with automatic irrigation
- Weather proof exterior outlets
- Composite Shingle roofing
- Two car garage with sectional roll-up raised panel door
- Partial sheet-rocked interior garage walls

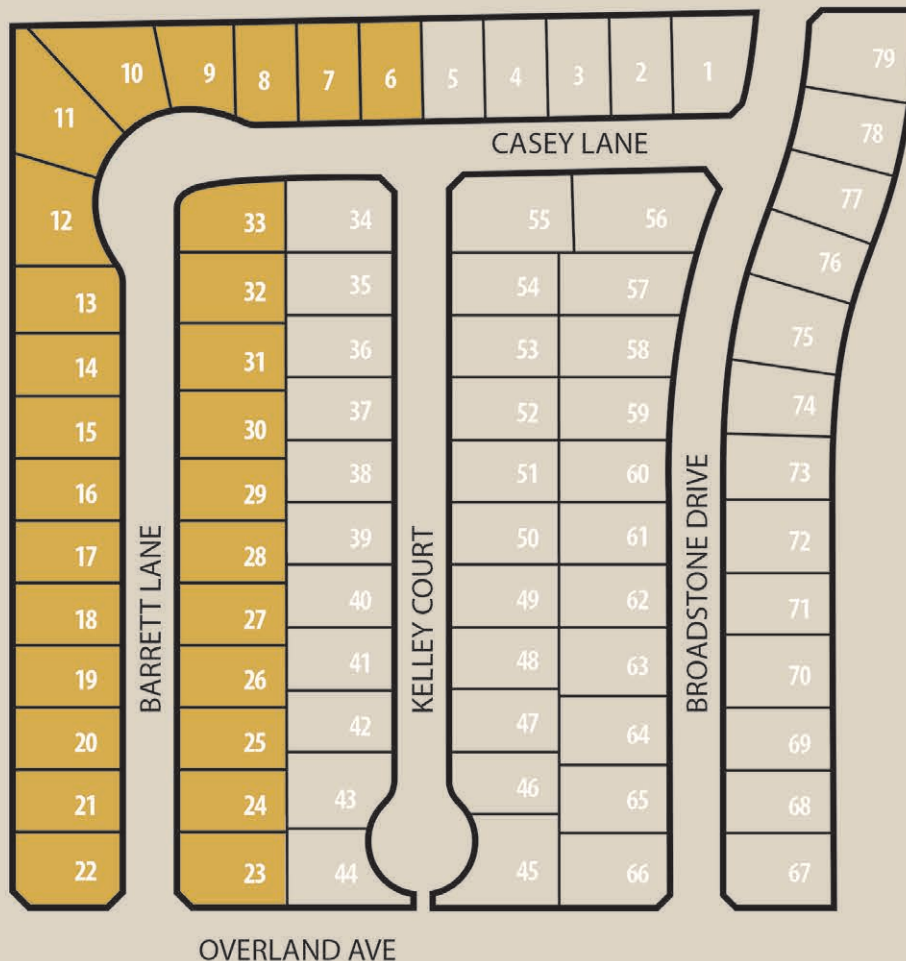
Chef Inspired Kitchens

- Granite kitchen countertops
- Gourmet kitchen with abundant cabinets & countertop space
- Double compartment kitchen sink with disposal
- Plumbed for ice maker
- Freestanding Electric range and oven
- Multi-cycle dishwasher

Included features are subject to change without notice.

STONEFIELD

HOME.com



Southpointe Phase 10

Fasano

1,213 Sq. Ft.
3 BEDROOM / 2 BATH
SINGLE STORY

Argent

1,436 Sq. Ft.
3 BEDROOM / 2 BATH
SINGLE STORY

Ashington

1,750 Sq. Ft.
3-4 BEDROOM / 3 BATH
SINGLE STORY

Santa Cruz

1,810 Sq. Ft.
4 BEDROOM / 3 BATH
SINGLE STORY

Monterey

1,960 Sq. Ft.
4 BEDROOM / 2 BATH
SINGLE STORY

Caledonia

1,969 Sq. Ft.
4 BEDROOM / 2-3 BATH
SINGLE STORY

Stella

2,059 Sq. Ft.
4-5 BEDROOM / 3 BATH
TWO STORY

Florencia

2,522 Sq. Ft.
4-5 BEDROOM / 3 BATH
TWO STORY



IN OUR CONTINUING EFFORT TO IMPROVE OUR HOMES, STONEFIELD HOME, INC. AND UC CONSTRUCTION RESERVE THE RIGHT TO MAKE CHANGES TO FLOOR PLANS, ELEVATIONS, OPTIONAL ITEMS, PRICING AND FEATURES WITHOUT PRIOR NOTICE. OPTIONAL ITEMS USUALLY INCUR ADDITIONAL COSTS; AVAILABILITY IS SUBJECT TO CONSTRUCTION CUT OFF DATES. THE EXTERIOR COLOR SCHEME OF EACH HOME HAS BEEN SELECTED AND IS NOT SUBJECT TO CHANGE. ALL FLOOR PLANS, RENDERINGS AND MAPS ARE ARTIST CONCEPTIONS AND ARE NOT INTENDED TO BE AN ACTUAL DEPICTION OF THE BUILDING, FENCING, WALLS, LANDSCAPING OR DRIVEWAYS. SQUARE FOOTAGE IS APPROXIMATE. PRICES ARE SUBJECT TO CHANGE WITHOUT NOTICE. COPYRIGHT 2016 STONEFIELD HOME, INC. THESE PLANS MAY NOT BE REPRODUCED.

Modified 01/28/2025