



ALDER TREE PRIMARY

BELIEVE - BELONG - BECOME

Believe, Belong, Become.

**Join us next year
at Alder Tree.**



Contents

A message from the Principal	04
School Values	06
Exceptional Teaching	09
A Personalised Approach	10
Curriculum	11
A Reading Academy	12
Enquiry Based Learning	13
Activities Journey	14
High Performance Learning	17
Outdoor Learning	18
Pastoral/Nurture Support	19
SEND	20
Rewards & Behaviour	21
Partnerships	22
Wrap-around Care	23
Message from the Trust	24
Where Are We?	26

A message from the Principal



Kate Burton
Principal

On behalf of all the staff, children and Governors, I would like to wish you a warm welcome to Alder Tree Primary Academy.

We achieved an Ofsted Good Rating in November 2023.

Here at Alder Tree we are committed to providing the best educational experience for all of our children. The focus in our academy is on giving all children the opportunity to achieve their full potential. In practice, this means providing exciting lessons to enable them to make the best progress they can in their studies, while also providing guidance and support so they can develop as happy, well-balanced individuals who can make the right decisions for themselves.

We pride ourselves on having the highest expectations for all our children and believe that there are no limits to what they can achieve. At the heart of the school's ethos is our commitment to work in partnership with parents, carers and the local community to raise aspirations for all, and to provide a high quality education for every child. Our goal is to ensure that every individual has the skills and



“**There are no limits to what our children can achieve**”

the knowledge needed to succeed in life and to become a lifelong learner. In addition to making learning exciting and rewarding, we will also encourage and challenge so that our children have high aspirations. Working collaboratively is a key driver for our school. Relationships and support from parents and families is strong, and means a great deal to us.

We strongly urge you to read the academy's 'Good' Ofsted report. Achieving this recognition is something we are immensely proud of.

Alder Tree Primary Academy benefits extensively from being a part of the White Rose Academies Trust, which is passionately committed to providing an exceptional education to our wonderful pupils.

It is a privilege to lead Alder Tree Primary Academy and I look forward to working alongside you to ensure that your child continues to receive the best education possible. Please do not hesitate to contact me if you have anything you wish to discuss.

Believe

We enable children to believe they can aspire to great heights and achieve remarkable success.

Belong

We belong to a community where all members are accepted for who they are.

Become

We deliver a knowledge-rich curriculum that ensures children will become model citizens of the future.

“

All our children
will succeed in
becoming life
long learners

”





Exceptional Teaching

The success of any school lies within the quality of its teachers. At Alder Tree Primary Academy, our teachers pride themselves on their personalised approach to teaching. Our teachers are carefully selected for their enthusiasm for their subject, coupled with their values and common goals, to ensure that every student enjoys their learning and achieves their potential.

Our teachers work tirelessly to prepare lessons that are exceptional. Lessons are well-planned to meet the needs of individuals and our teachers ensure that our students understand precisely what they need to do to improve.

Our approach to teaching is driven by the latest research, which ensures our classroom practice is exceptional; through powerful professional development, we know that our teachers are amongst the best in the area. This, combined with a willingness to go the extra mile for our students, means that by choosing Alder Tree Primary Academy, you are joining a culture of excellence.

In order to provide students with a truly exceptional education, we invest in a comprehensive programme of high-quality training to ensure our teachers are excellent practitioners, share the very best ideas, and thrive in an environment where they can collaborate, share and innovate together. You are joining a community where we expect the highest of standards; from both our staff and from our students. You are joining a vibrant learning community where every student matters, in every classroom.

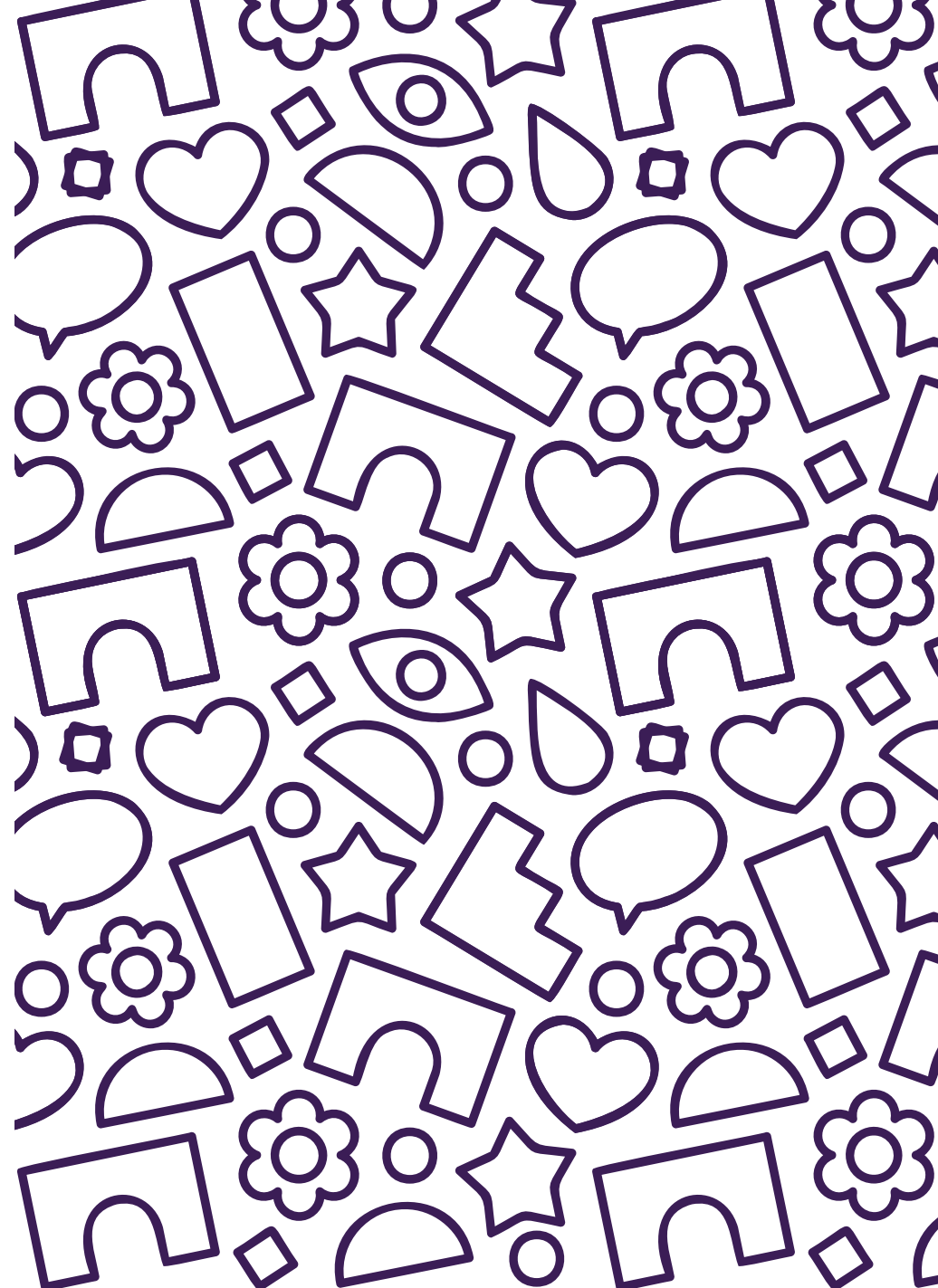


A Personalised Approach

At Alder Tree Primary Academy in Leeds, we invite all children to **Believe**, **Belong** and **Become**.

Our aim is to provide an education which encourages them to **Believe** in themselves, enables each child to develop a sense of **Belonging** in the world, and **Become** more than they thought was possible.

We have exceptional standards and expectations in both behaviour and work. We have no doubt that our children can meet these standards and achieve remarkable success.



Curriculum

We define 'curriculum' as the totality of a child's experience at Alder Tree Primary Academy, ensuring that they are secondary school ready with both the right knowledge and the right skills for the next stage of their educational journey. The children are at the heart of our curriculum and it is underpinned by our ethos of:

- **Believing in your abilities**
- **Achieving your goals**
- **Succeeding beyond expectations**

At Alder Tree Primary Academy, we are committed to providing a curriculum that equips our children with knowledge and skills across all primary subjects, with the aim of ensuring pupils are ready for the next stage of their learning. We do this by ensuring that core learning is embedded throughout our curriculum, providing pupils with opportunities to practise and refine the skills they have been taught across a range of contexts.



A Reading Academy

At Alder Tree Primary Academy all children have access to a well-resourced library with a wide variety of age-appropriate books and material to choose from.

Students will engage with reading in scheduled sessions, guided reading, library time and through cross-curricular texts.

This will enable children to develop their reading abilities through all areas of our curriculum, encouraging a love of reading for all.

At Alder tree, we promote Drop Everything and Read sessions during the school day with pupils and also involving parents. This is time solely dedicated to enjoying reading.



Enquiry Based Learning

Many children join us in Reception. However, we also have spaces for up to 26 children in our Nursery Provision, Saplings.

We provide an education which enables students to **Believe** in themselves, develop a sense of **Belonging** in the world and **Become** more than what they ever thought was possible.

We strive to create a warm family feel, and our approach to learning through play ensures that children are able to develop their skills and their confidence through first-hand experiences, while also thoroughly enjoying their time at school.

We love stories and reading books, and you will find many bookshelves around our school. We also love learning by being active within the natural environments that surround our wonderful school, such as our on-site Forest School.

We also use enquiry-based learning within our teaching. This approach provokes curiosity and motivation amongst our children, building their own academic knowledge with their teacher's guidance.



“

Children are encouraged to develop their own intrinsic motivation through provision led learning

”

A Journey Through Our Activities

At Alder Tree, we believe that a well-rounded education goes beyond traditional classroom learning. Our carefully crafted activities journey is designed to offer our pupils unique enrichment experiences, which are in addition to the core curriculum. These hands-on activities are an integral part of being a pupil at Alder Tree, giving pupils opportunities to develop key life skills, explore their passions, and build confidence. From Early Years Foundation Stage (EYFS) through to Key Stage 2 (KS2), each activity is designed to enhance personal growth, foster creativity, and encourage social responsibility, helping our students become well-rounded, thoughtful individuals.

EYFS

At the beginning of their school journey, our youngest pupils are introduced to activities that encourage curiosity, communication, and social interaction.

KS1

In KS1, pupils deepen their understanding of the world through exploration and creative expression.

KS2

In KS2, pupils take on more responsibility and leadership roles as they explore activities that expand their knowledge and skills.

Our Activity Journey

EYFS



Perform for an audience



Build a campfire



Share a story with an intergenerational person

KS1



Build a bug hotel



Visit a stately home



Record a song



Play a boardgame with an intergenerational person

KS2



Visit a university



Create a gallery



Experience an archaeological dig



Canoe across a lake



Share an activity at a care home



Cook a meal



Grow food and sell it at a market



Learn an instrument



Climb a mountain



Make a film



Take part in a debate



Learn more

Extras



Visit a theatre



Take part in a sports competition



Watch a ballet



Listen to a live orchestra



Be a Student Leader



Watch a professional sport



High Performance Learning



Alder Tree Primary is the first Primary School in Leeds to embrace the High Performance Learning philosophy; an approach to learning that incorporates over 30 years of research and practical experience. It helps students to reach high levels of learning by focusing on the development of a specific range of characteristics and behaviours.

High Performance Learning was developed by experienced educational leader and academic Professor Deborah Eyre, whose key philosophy is that every student has the potential to be a high performer.

This programme builds on existing good practice and looks to ensure that schools provide the right conditions and the right support to allow every child to reach high levels of performance. Alder Tree Primary Academy is thrilled to announce that in 2023, it achieved the prestigious High Performing School Award (HPSA) accreditation after two years of dedicated work and is continuing to work with HPL to achieve a World Class award.



Outdoor Learning



At Alder Tree we recognise the importance of our learning being linked to outdoor learning. Our children learn through real life experiences in our Forest School, where trained practitioners nurture learner-led exploration and discovery.

We also work with Nature Friendly Schools. Nature Friendly Schools is a demonstration project which works to expand children's understanding of care for the environment through outdoor learning.

Our children in Years 4 to 6 also have the opportunity to attend a range of residential trips which centre around being outdoors and learning outside of the academy.



Pastoral/Nurture Support

Pivotal to the ethos of our academy is that we believe everyone should feel safe, happy, and cared for. To enable this to happen, we have a committed pastoral team who support our pupils and families throughout their time at the academy.



SEND at Alder Tree

At Alder Tree Primary, our ethos is rooted in compassion, equality, and ambition for all.

We are committed to:

- fostering positive relationships, wellbeing, and active participation across our school community;
- ensuring every pupil - without exception - can access high-quality teaching and tailored support to thrive and succeed.
- working in close partnership with parents and carers to ensure every child receives the support they need to reach their full potential.



Rewards and Behaviour

- ✓ **Be Ready**
- ✓ **Be Respectful**
- ✓ **Be Safe**

Our Positive Behaviour system provides our children with opportunities to be recognised and praised for the academic achievements, progress, behaviour, and attendance, as well as contributions to the academy and wider community.

We expect our staff to encourage and praise every success because we believe that praise and encouragement is more effective in engaging and motivating our children than punishment.



Partnerships

We are proud to have a number of strong community partnerships which engage our parents and children in a variety of activities and programmes such as the Leeds Rhinos Foundation. We also have strong links with Leeds City Academy and Leeds City College.



Wrap-around Care

It is proven that good quality wrap-around childcare has a positive impact on children's outcomes. This is why we have developed our wrap-around care provision.

Breakfast Club

Our Breakfast Club enables you to drop off your child early in the morning. The club starts at 8.00am, providing free, trusted childcare with free cereal and toast, plus a range of activities before children start their learning for the day.

This means that you can be reassured that your child is safe and having the best start to their day.

After School Club

The After School Club gives you and your child some greater flexibility, especially around a busy work schedule. Children who join in with the After School Club can go straight from their classroom. We host a variety of activities including themed weekly events. We also take any opportunity to enjoy our wonderful school grounds.

Monday | £5 | 3.10pm - 5.00pm

Tuesday - Thursday | £3 | 4.00pm - 5.00pm

No offer on Fridays.

A Message from the Trust

The trust's vision is to be an exceptional and responsive academy group providing life-changing education, skills and experiences for individuals in our schools and in their communities. Our academies are outward facing, working closely with local secondary and primary schools on a national and international basis.

Our academies are part of their local communities, developing relationships with community groups and employers. The aim of collaboration in every case is to raise our students' standards of achievement.



We are passionate about ensuring that each of our academies across the Trust remain highly aspirational educational provisions which support all our young people to flourish and achieve the success we know they are capable of. We support them to achieve this by providing our communities with;

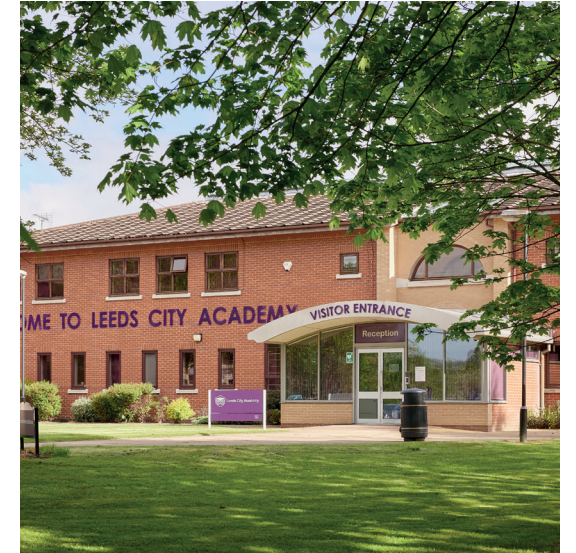
- inspiring, vibrant learning environments with state-of-the-art facilities,
- exceptional pastoral care where every child is known, valued and supported,
- highly ambitious curriculum delivery which is responsive to the needs of the communities we serve and representative of our wonderful diverse communities,
- outstanding teaching which ignites our students with a passion and love for learning to accelerate progress,
- a safe place to learn which is welcoming, inclusive and built on positive relationships,
- the values and character to be responsible caring citizens who have the knowledge and skills to be successful, at school, in their future education and professional careers.

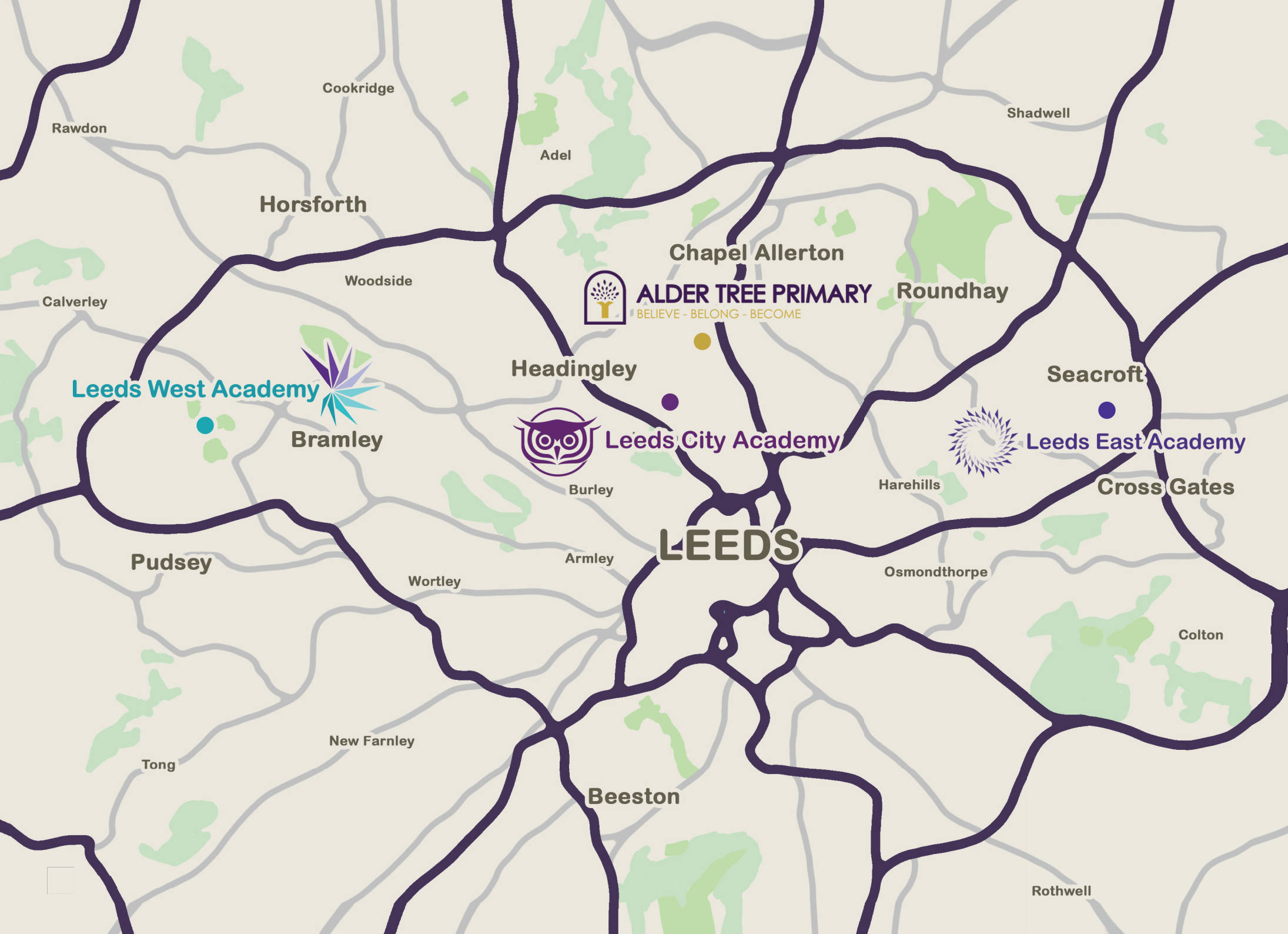


As a Trust we are proud to be part of the international High Performance Learning community and this work is underpinned by the simple philosophy that every child can and will perform highly.

Our leadership teams and every colleague who works for the Trust work tirelessly to provide unrelenting support for our students, their families and each other.

We warmly welcome you to visit our academies to experience the phenomenal work of our staff and students as together we continue our transformational journey to world class and beyond.





Where are we?



ALDER TREE PRIMARY
BELIEVE - BELONG - BECOME



SAPLINGS NURSERY
at Alder Tree Primary

Potternewton
Mount
Leeds
LS7 2DR

0113 262 0021
info@alderprimary.org.uk
www.alderprimary.org.uk



Leeds City Academy

Bedford Field
Woodhouse Cliff
Leeds
LS6 2LG

0113 284 4260
info@leedscityacademy.org.uk
www.leedscityacademy.org.uk



Leeds East Academy

South Parkway
Seacroft
Leeds
LS14 6TY

0113 273 1964
info@leedseastacademy.org.uk
www.leedseastacademy.org.uk



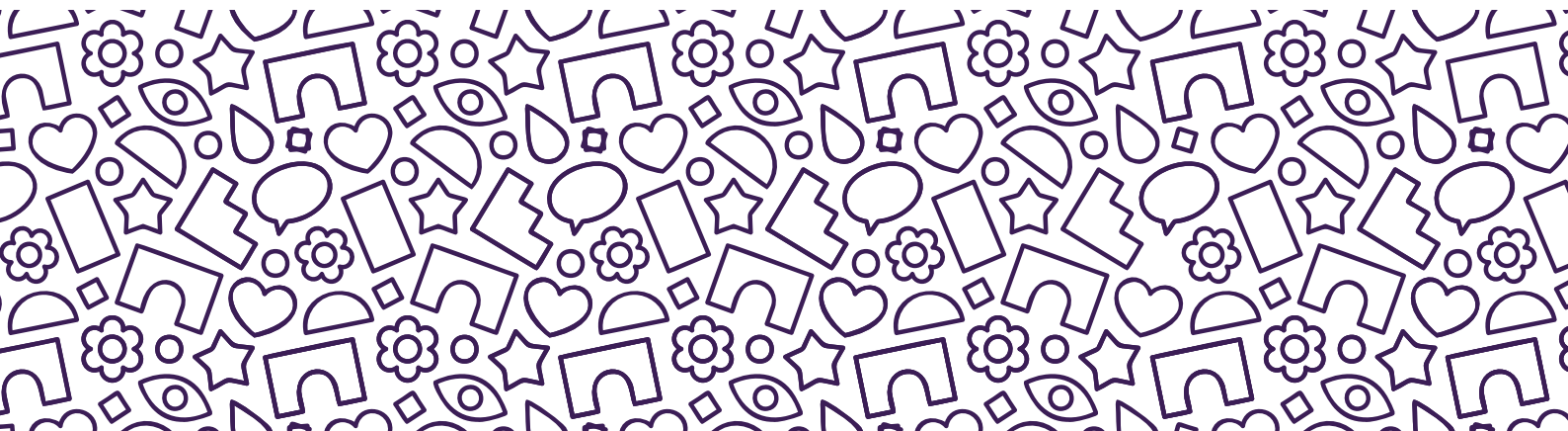
Intake Lane
Rodley
Leeds
LS13 1DQ

0113 229 5454
info@leedswestacademy.org.uk
www.leedswestacademy.org.uk



ALDER TREE PRIMARY

BELIEVE - BELONG - BECOME



Principal

Kate Burton

Alder Tree Primary Academy
Potternewton Mount
Leeds
LS7 2DR

0113 262 0021

info@aldertreeprimary.org.uk
www.aldertreeprimary.org.uk

Alder Tree Primary is part of the
White Rose Academies Trust



WHITE ROSE
ACADEMIES