



**McPhee Diesel Pty Ltd**  
ABN: 83601933877  
665-685 Stockleigh Road  
Stockleigh, Qld, 4280.  
[ricky@mcphreediesel.com](mailto:ricky@mcphreediesel.com)  
0432149973

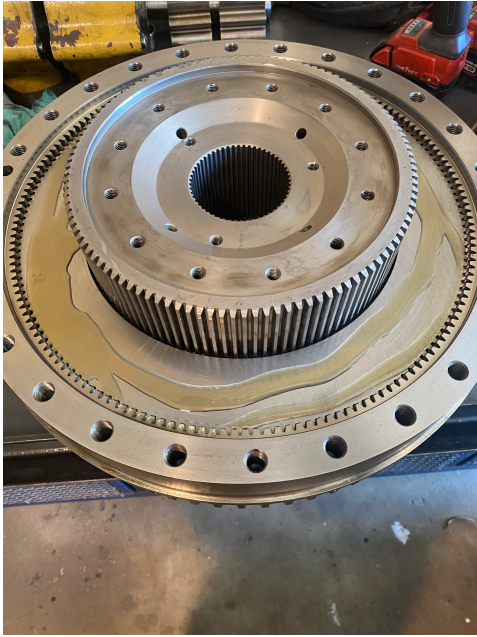
## McPhee Diesel Pty Ltd 793C Torque Converter Rebuild Report

124-8506 Caterpillar 793C Torque Converter.  
Rebuilt by Ricky McPhee.  
Removed from Truck TR441 (ATY00743) at 100,746 frame hours.  
Torque Converter had 13,322 hours.

All components were completely disassembled, cleaned and measured for a reusability following TC specifications listed in **SEN1448-11.**  
Reassembly carried out following TC assembly procedures in **REN2534-14.**

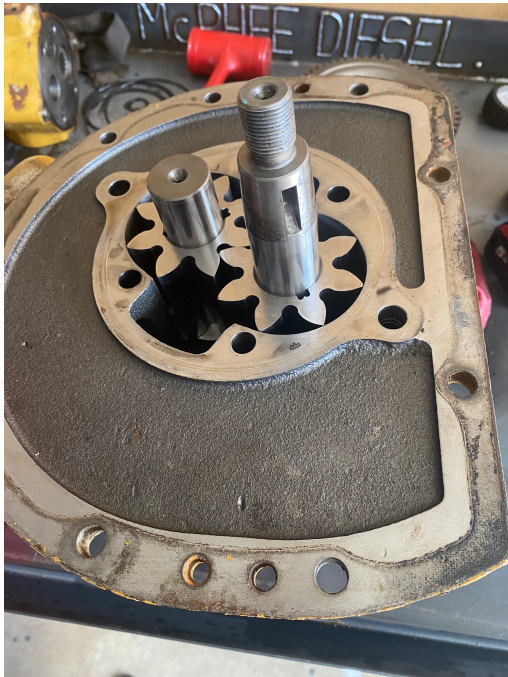
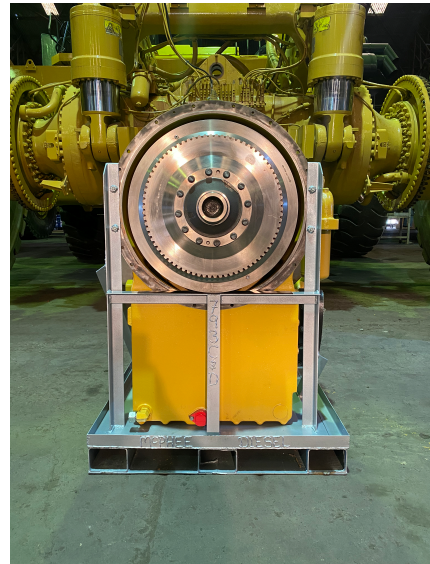
Rebuild completed Feb 2021.  
Parts purchased from Westrac Nov 2020  
Bearing Kit 161-4311 – \$6,208.13 + GST  
Gasket Kit 282-4338 – \$1,513.39 + GST





### Component Checks

- Measurements:
- Lock-up clutch thickness: 29.71 mm (within spec)
- Stator–Turbine clearance: 1.09 mm (within spec)
- Stator–Impeller clearance: 1.12 mm (within spec)



### Transmission and Torque Converter Pump

All bushes, keys and seals replaced.

Gears, housings and shafts in great condition.

Pump spun smoothly after assembly.

### Recommendations

- Use **Caterpillar-specified oils & lubricants**.
- Perform **SOS sampling @ 100 hours Initially** and every **250 hours**; share reports with **ricky@mcphreediesel.com**.
- Provide current frame hours, previous component hours and reason for change out.
- Provide evidence of installation method and preparation for new component (Timesheets, Shift Logs, Detailed invoice etc).
- Provide a **Product Status Report** at installation.

### Warranty Note

For warranty purposes, please follow McPhee Diesel's Standard Warranty Terms and the Warranty Activation Checklist (separate documents)