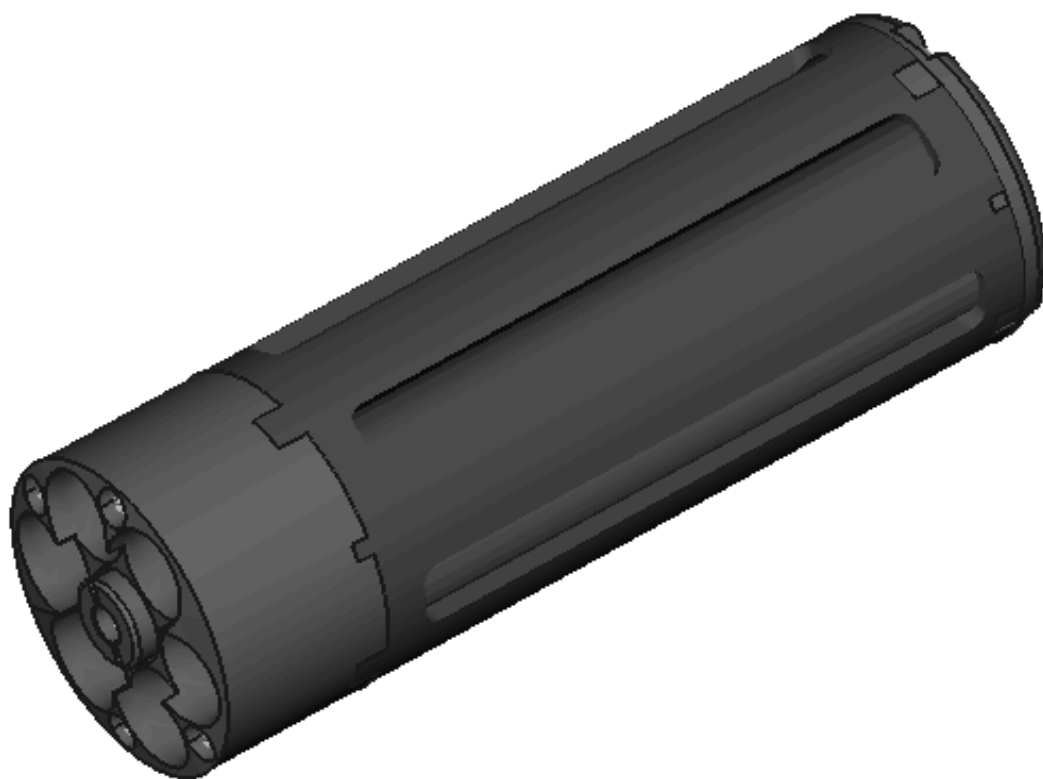


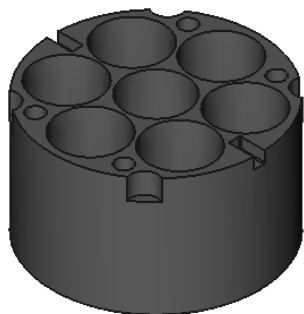


# **RI Speedloader Assembly Instructions**

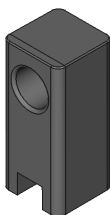


# PARTS LIST

Body (1)



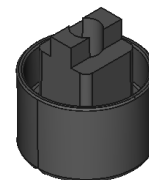
Shaft (1)



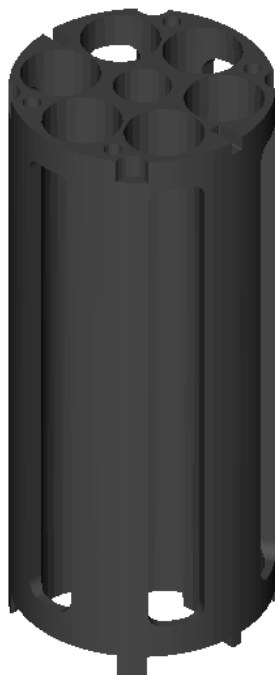
Rotator (1)



Button (1)



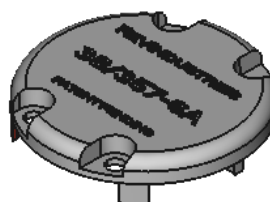
Extender (1)



Extender Plug (1)



Extender Cap (1)



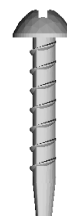
Screw  
M2.3 x 10mm  
(1)



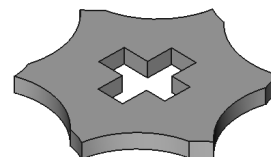
Screw  
M2.8 x 5mm  
(4)



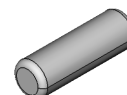
Screw  
M2.6 x 20mm  
(4)



Metal Star (1)

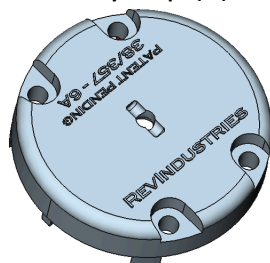


Dowel Pin (1)



## BONUS PACK PARTS

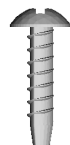
Body Cap (1)



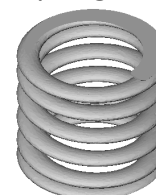
Body Cap Knob (1)



Screw  
M2.6 x 10mm  
(1)



Spring (1)



Screw M2.8 x 5mm (4)



Extender Cap (1)



Extender (1)



Extender Plug (1)

Metal Star (1)



Rotator (1)

Shaft (1)



Dowel Pin (1)



Spring (1)

Body (1)



Screw M2.6 x 20mm (4)

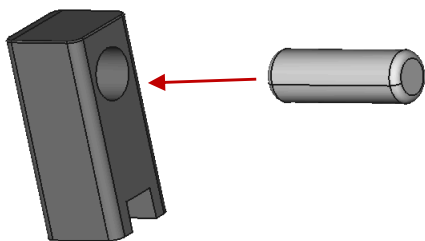
Button (1)



Screw M2.3 x 10mm (1)

## Step 1:

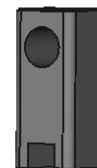
A



Dowel Pin

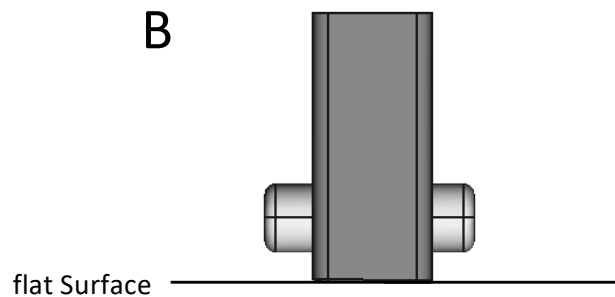


Shaft



**Insert Dowel Pin into Shaft (A).  
Rotate Shaft so Dowel Pin is on  
bottom. Set assembly on flat  
surface (B).**

B



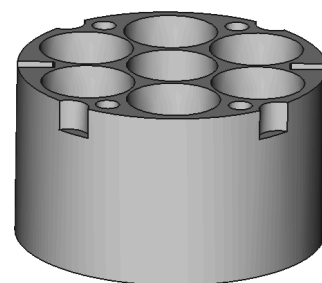
flat Surface

Step Complete

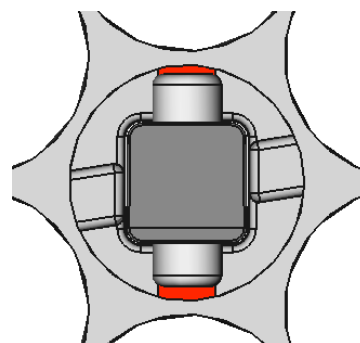
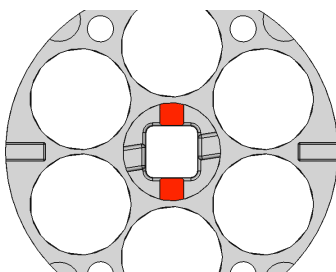
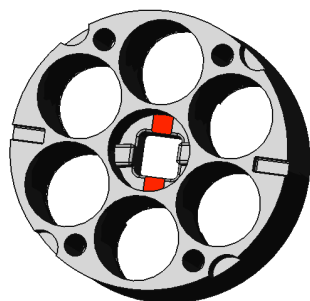
---

## Note 1: Body & Shaft alignment

To correctly insert the Shaft into Body (Step 2) the Dowel Pin & Shaft must be aligned with the groove in the Body (Red).



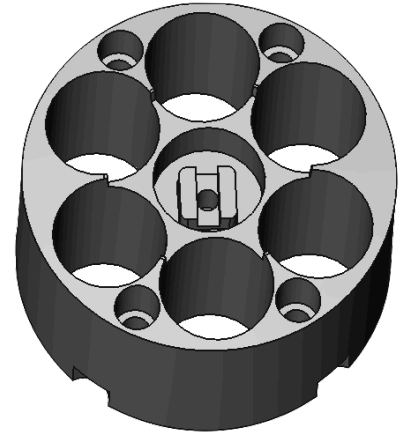
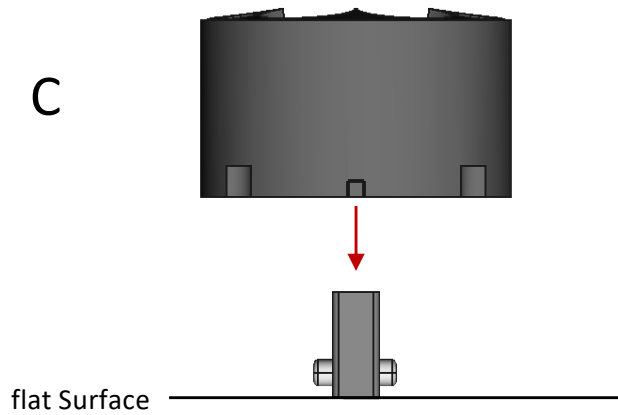
Body



Proper Alignment

Step 2:

**Lower the Body onto the  
Dowel Pin & Shaft (C)- with  
alignment according to Note 1**

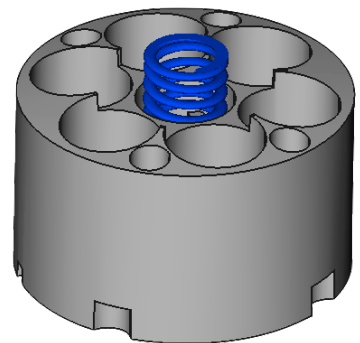
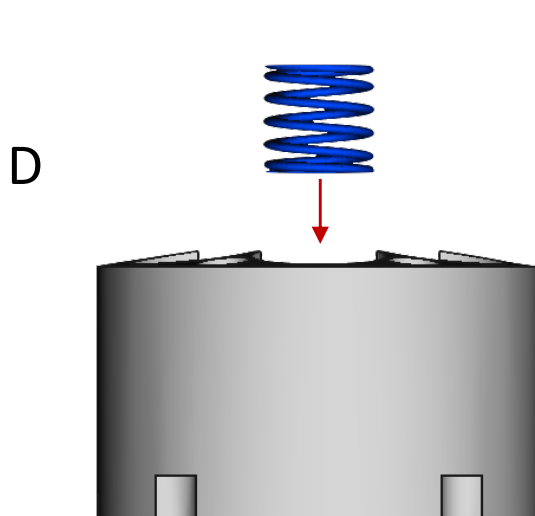


Step Complete

---

Step 2:

**Drop Spring into the Body (D).**



Step Complete

## Note 2:

The Shaft & Dowel Pin align with the Button via groove (red square)

The Button also has an alignment line to help match to the groove in the shaft

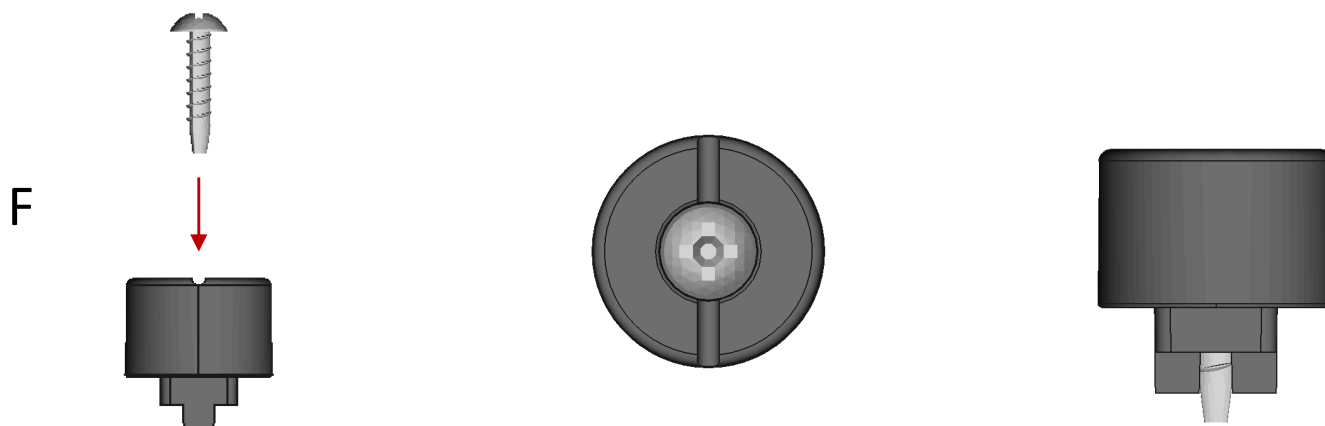
The right image shows the correct alignment when inside the Body.



---

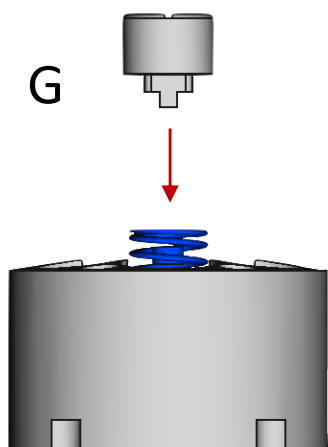
## Step 5:

**Place the M2.3x10mm screw  
into the Button (E).**

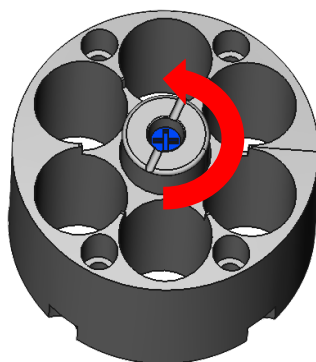


Step Complete

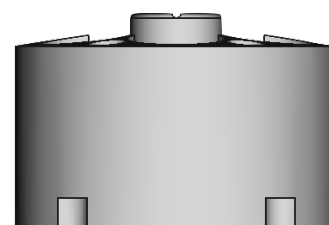
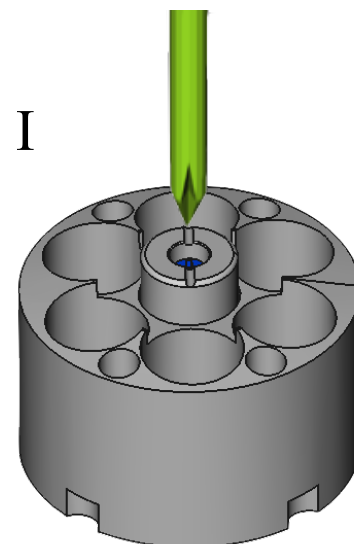
**Step 6:** Drop Button (G) into Body (G) with guideline pointing at 1 o'clock position (H). Pushing downward until Button touches Shaft, rotate Button counter-clockwise until Button aligns with Shaft groove (12 o'clock)  
Use No 0 phillips-head screwdriver to tighten M2.3 x 10mm Screw (I). Do not over tighten.



H



I



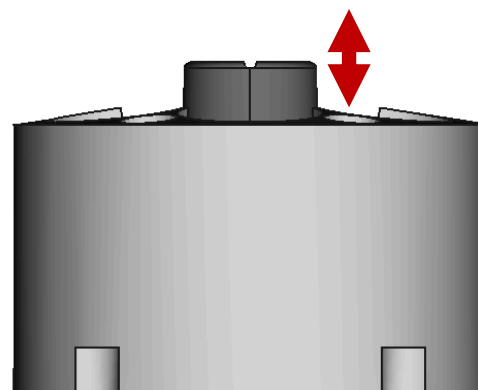
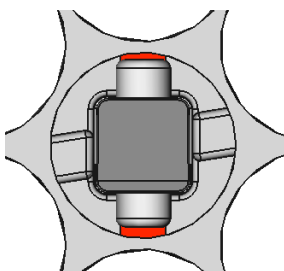
Step Complete

## Function Check 1:

Rapidly press and release the Button multiple times.

The Button & Shaft should travel without binding. Only the Spring pressure should be felt.

Verify Shaft and Dowel Pin is aligned in Body as shown below.



If binding occurs, further tighten Screw

If Dowel Pin is not properly aligned, disassemble and revert to Step 2.

If binding still exists, disassemble and check parts for abnormality.

### Note 3:

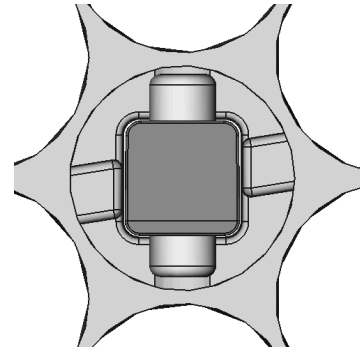
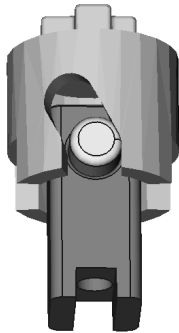
Proper alignment of the Rotator is needed to release the bullets.  
The Dowel Pin travels in the tall groove shown in below left image.



Rotator

The top of the Rotator has a cross. One leg of cross is shorter (red circle in Step 7)

Before beginning Step 7, align Body so that the Dowel Pin is aligned to 6 & 12 o'clock position as shown in the below right image.

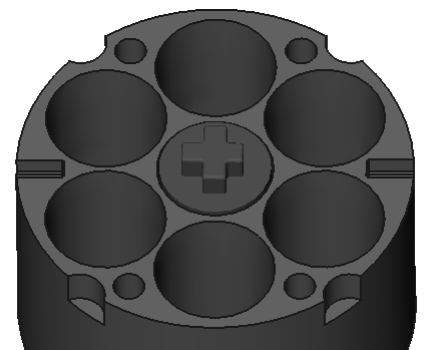
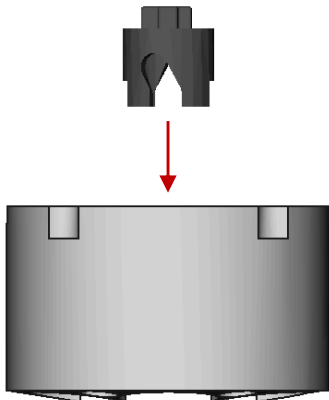


---

### Step 7:

**Place Rotator into Body so that Rotator's angled groove is aligned with Dowel Pin (J)**  
**Short leg of Rotator's cross should be oriented to the right (red circle)**

J

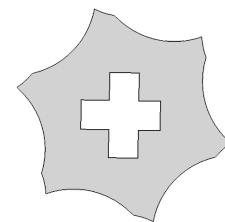


Step Complete



## Step 8:

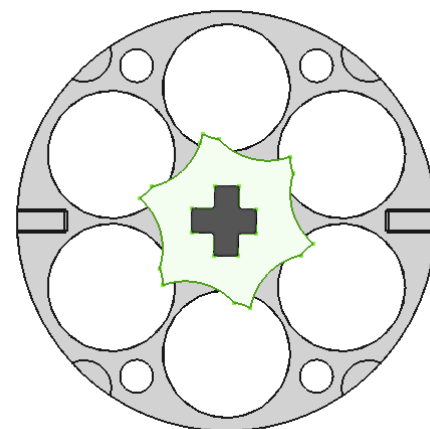
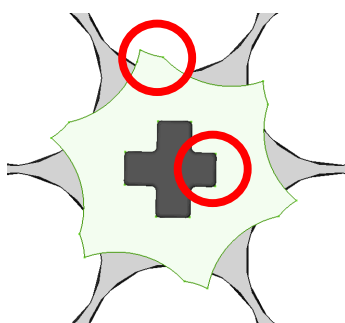
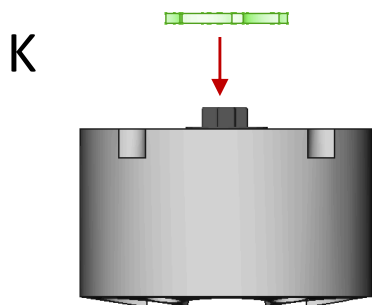
Place the Metal Star onto the Rotator (K). The center of Metal Star has a cross with one short leg that matches to the short leg of the Rotator (see center image's lower red circle).



Metal Star

IMPORTANT: The points of the Metal Star must be aligned with point's tip to the left (see top red circle of center image). Bullets will not release if Metal Star is installed upside down.

Verify Metal Star installation matches "Step Complete" image exactly.



Step Complete

---

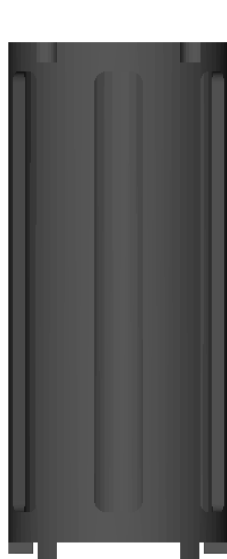
## Step 9: Place Extender Plug into Extender's large center hole and press firmly until Extender Plug is fully seated (L).

Ensure proper seating by firmly pressing downward on Extender

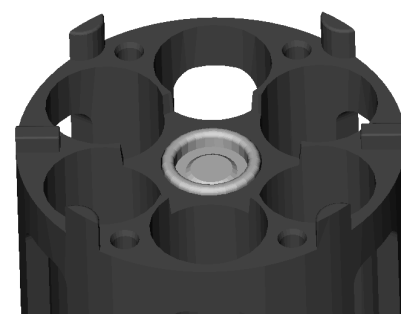
Note: If Extender Plug is not fully seated, Rotator will not rotate.



Extender Plug



Extender

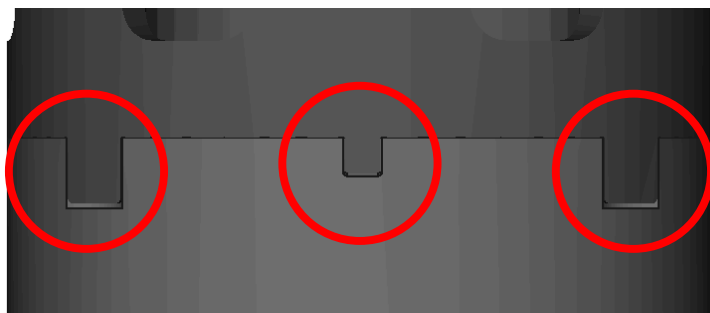
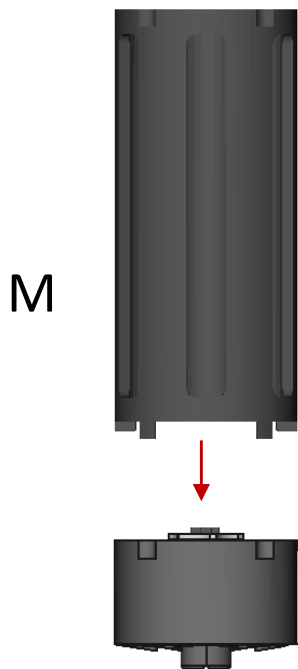


Step Complete

## Step 10:

Place the Extender onto the Body assembly (M), using alignment guides (red circles).

Hold Body Assembly and Extender firmly in place and rotate combined parts so that button faces upward.

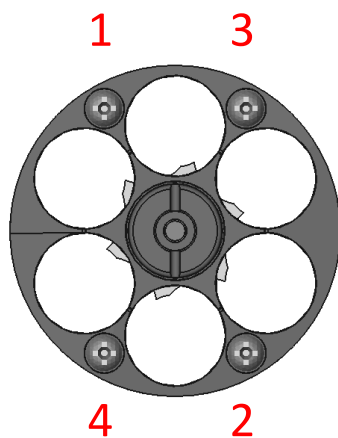
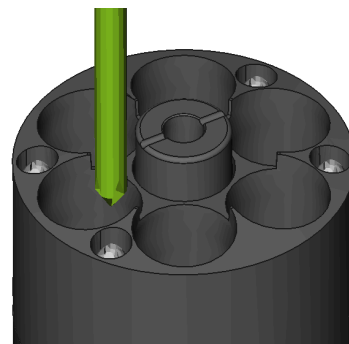
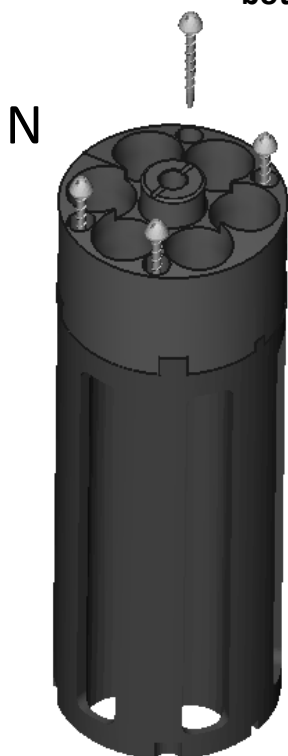


Step Complete

## Step 11:

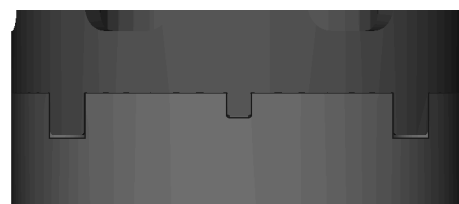
Place the four M2.6 x 20mm Screws into Body (N).

Tighten M2.6 x 20mm Screws with Number 0 phillips-head screwdriver. Use the tightening sequence in bottom right image.



Tightening Sequence

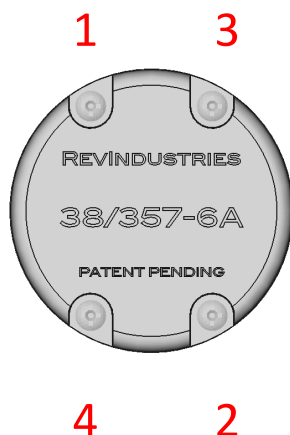
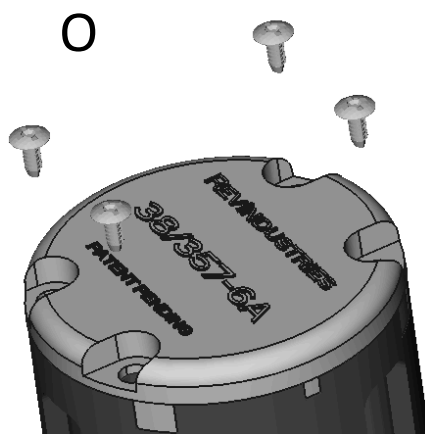
Note: At "Step Complete" there should be no gap between Body and Extender



Step Complete

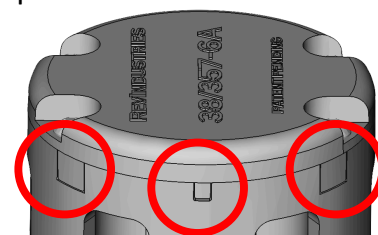
**Step 12:** Place the Extender Cap atop the Extender (O), using the alignment guides.  
Place four M2.8 x 5mm Screws into Extender Assembly as shown in below left image.

Tighten M2.5 x 5mm Screws with Number 0 phillips-head screwdriver using the tightening sequence in center image.



Extender Cap

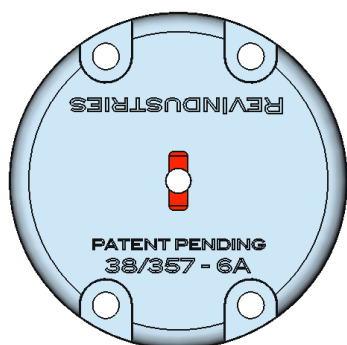
Note: At "Step Complete" there should be no gap between Body Cap and Extender.



Step Complete

## Assembly of RI Speedloader is Complete

**Body Cap Step 1:** Align the ridge of Body Cap Knob with the groove in Body Cap (See red on left images).

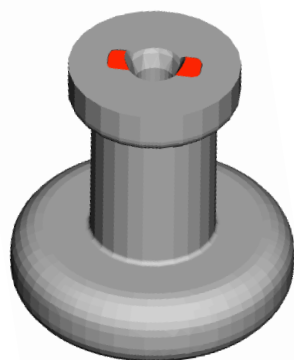


Body Cap

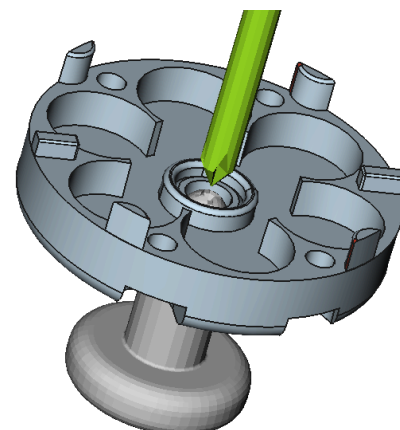
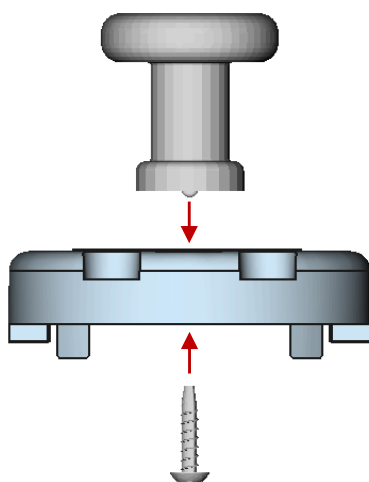
Insert M2.6x10mm Screw into center of Body Cap.

Tighten M2.6 x 10mm Screw with Number 1 phillips-head screwdriver.

Note: Ensure Body Cap Knob is in groove after tighten screw. If not, rotate Body Cap Knob until properly seated and further tighten M.2.6 x 10mm Screw.  
No gap should exist between Body Cap and Body Cap Knob after tightening.



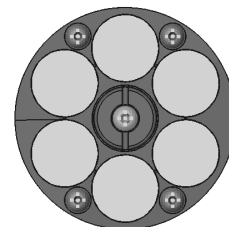
Body Cap Knob



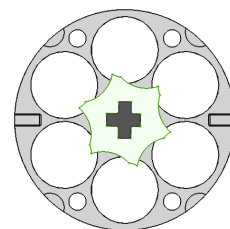
# Assembly Troubleshooting Guide

Below are the potential errors that prevent proper function of the speedloader:

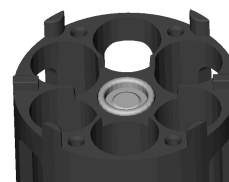
**Screws are not tight.** The 5 screws on bottom of speedloader must be tight, but not so tight as to strip the plastic. Make sure all screws are tight and there are no gaps between parts.



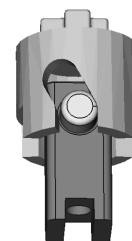
**Metal Star is not correctly oriented.** Remove the four M2.6 x 20mm that connect the Body and Extender. Verify Metal Star is correctly oriented as shown. If Metal Star is upside down, as compared to illustration right, it will not let Test Bullets drop.



**Extender Plug is not fully seated.** The Extender Plug requires a degree of pressure to fully seat in the Extender. If not fully seated, the friction between Extender Plug and Rotator is too great for the Metal Star to rotate. Note: There may be a small gap between Body and Extender when not fully seated. Use Extender Plug Assembly Puck to push all the way in. Be careful to properly align as damage could happen to the ridges between cylinders.



**Rotator not correctly aligned with Dowel Pin and Body.** The Rotator has two groove types (one for Dowel Pin and one set for Body). If not correctly aligned, neither the Metal Star or Rotator will turn. To correct: Remove Rotator and turn 90-degrees. Note: When Rotator is removed, verify alignment of Shaft & Dowel Pin.



**Shaft & Dowel Pin not properly aligned:** The Shaft & Dowel Pin must be in the groove as illustrated right. To correct, remove Button Screw, Button, and Spring. Remove Shaft & Dowel Pin and rotate 90-degrees to fall into groove. Follow steps 1 through 8 to rebuild.

