

KennStone

Reconstituted Stone Walling



Independent
manufacturers of
concrete products

STOWELL
CONCRETE LIMITED



KennStone is a complete range of reconstituted walling blocks designed to replicate natural stone. It is available in two finishes; tumbled and split and multiple lengths across three course heights; 65mm, 140mm and 215mm.



KennStone can fit into any natural environment as it can be used to create charming and contemporary properties that uphold the aesthetics of the surrounding area. Stowell Concrete prioritise flexibility and service in the supply of KennStone walling products.

The manufacturing process is designed so that the product lengths suit the builders' requirements and reduce cutting onsite.

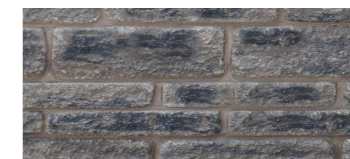
KennStone Standard Range:



Ashcott Grey



Cranmore Buff



Hewish Grey

KennStone Premier Range:



Tetbury Gold



Woodstock Cream



Dunster Red



Milverton Blend

Depending on volumes, bespoke colours can be made to order, please contact our sales team for more information.



Tumbled finish



Ashcott Grey Cranmore Buff

Split finish



Ashcott Grey Cranmore Buff

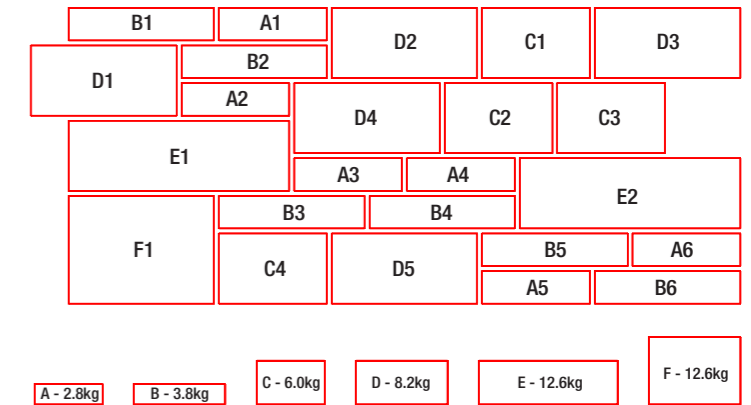
Size mm Nominal (l x w x h)	Approx weight kg	No. per pack	Number per m ²	m ² per pack	Approx weight per pack
215x100x65	2.8	384	60	6.4	1,075
290x100x65	3.8	288	45	6.4	1,095
330x100x65	4.3	324	40	8.1	1,405
215x100x140	6.0	192	30	6.4	1,150
290x100x140	8.2	144	23	6.3	1,180
330x100x140	9.3	162	20	8.1	1,510
440x100x140	12.6	96	15	6.4	1,210
215x100x215	9.3	128	20	6.4	1,190
290x100x215	12.6	96	15	6.4	1,210
330x100x215	14.3	108	13	8.3	1,545
440x100x215	19.3	64	10	6.4	1,235

KennStone Random Pattern

Stowell Concrete offers a selection of recommended walling patterns, with KennStone Random leading the way as the top choice among housebuilders. Comprising of just six unit sizes, the KennStone Random pattern delivers sufficient variation to achieve a natural, random aesthetic, while simplifying specification, ordering, and onsite installation.

Cross-Section of Coursed Mix:

- 65mm - 30%
 - 140mm - 60%
 - 215mm - 10%
- A - 65 x 215mm - 6 No.
 - B - 65 x 290mm - 6 No.
 - C - 140 x 215mm - 4 No.
 - D - 140 x 290mm - 5 No.
 - E - 140 x 440mm - 2 No.
 - F - 215 x 290mm - 1 No.



Hewish Grey



Dunster Red



Tetbury Gold



Woodstock Cream

Plus additional colours. Samples available on request.

KennStone Project Packs

Project packs of multiple sizes available from stock, making it easier for builders and contractors to select and use KennStone walling.

Crafted in our six most popular sizes, KennStone Project Packs provide the perfect blend of flexibility and practicality. Ideal for landscaping, home extensions, and smaller builds, these packs make it easy to achieve a beautiful random pattern without the hassle of excess materials. Each pack is carefully curated to include the right quantities of every size — ensuring efficiency, simplicity, and exceptional results in every project.

Each pack covers 4.75m² and includes the following products;

32 pieces	215x100x65mm
24 pieces	290x100x65mm
32 pieces	215x100x140mm
24 pieces	290x100x140mm
16 pieces	440x100x140mm
8 pieces	290x100x215mm

See KennStone Technical Guide for full technical information and walling patterns



* split face project packs also available



Technical data	
Sizes	Available in 11 different sizes across three course heights: 65mm, 140mm, and 215mm.
Weight	Unit weights range from 2.8 kg to 19.3kg.
Packaging	Number per pack varies by size, with detailed metrics provided for m ² per pack and approximate weight per pack.
Density	Gross dry density of 2,050 kg/m ³
Strength	Normalized compressive strength of 22.5 N/mm ² .
Standards Compliance	Meets British Standard BS EN 771-5
Thermal Conductivity	1.06 (λ10, dry unit) W/mK
Dimensional Stability (Moisture Movement)	<0.8mm/m
Tolerance Category	D1
Water Absorption	<10g/m ² /s
Reaction to fire	Class A1
Bond Strength	0.15N/mm ² Shear Bond Strength (Tabulated value).
Durability Against Freeze Thaw	For external use

Technical Services

We offer full technical support and advice to help with the design and specification of KennStone Walling into various projects.

This includes:

- Expert technical guidance on all products.
- Stone matching production trials
- Stone matching service
- Samples readily available

KennStone is manufactured using the finest locally sourced materials, ensuring strength, durability and consistency.

All our products are certified under BES6001 Framework for the Responsible Sourcing of Construction Products as 'Very Good'.

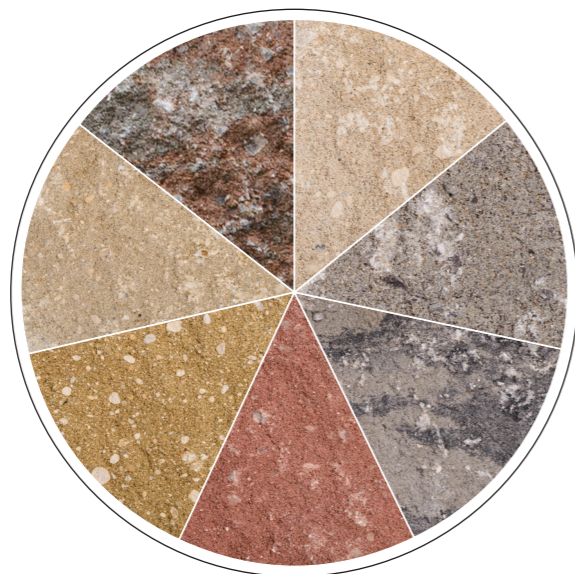
Bespoke Colour Offering.

At Stowell Concrete we have invested in the latest batching technology, enabling us to blend up to four different colours simultaneously. This flexibility in production allows us to create bespoke mixes that can accurately match the stone of the surrounding area onsite. Ideal for meeting local planning regulations, a bespoke colour blend can meet the aesthetics of the surrounding area whilst replicating natural stone.

While we supply exclusively through builders merchants, we are happy to collaborate directly with housebuilders, specifiers and architects to ensure the product matches all requirements.

Before manufacturing the whole order quantity, we will manufacture a sample pallet for approval. Once approved the lead time for manufacture and supply is approximately 6 to 8 weeks.

For more information, including minimum order quantities, please contact our sales team: sales@stowellconcrete.co.uk 01934 834000.



Our Full Range of Concrete Products

KennStone walling: Delivers the aesthetic appeal of natural stone with enhanced durability, ideal for housebuilders seeking efficient installation and lasting quality.

Wall copings and pillar caps: Designed for durability and to give a neat finish and protection to walls and pillars.

Concrete blocks: Available in multiple densities and strengths for construction and masonry work, including dense, medium dense, and lightweight options.

Close textured (paint-grade) concrete blocks: Available in various densities and strengths, these blocks provide a smooth finish ideal for direct painting.

Coursing bricks and concrete commons: Precision-made for uniformity and strength, ideal for seamless integration in layered masonry construction.

Specialty masonry products: Built to match our traditional concrete blocks, our range meets every unique construction challenge with tailored solutions.

Block paving: Ideal for driveways and patios, available in multiple colour variations and thicknesses.

X-TEX and Clifton paving: Elegant and durable paving with a textured surface finish.

Commercial paving: Robust and versatile, ideal for commercial, utility, and modular applications.

Tactile paving: Designed for safety and navigation, including blister, hazard warning, cycleway, and barface paving options.

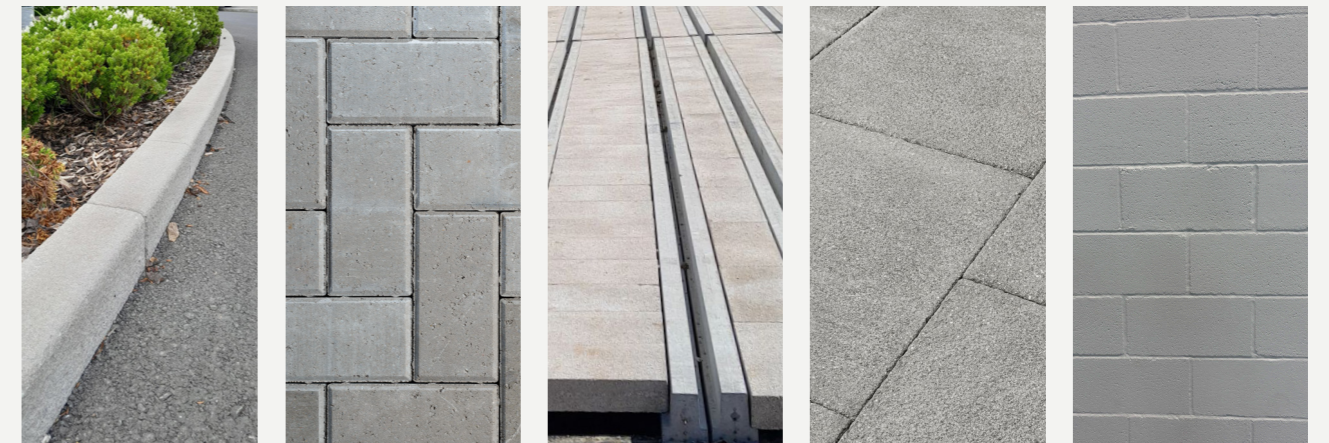
Kerbs, edgings, channels and accessories: Essential for roadways and commercial landscapes, designed for functionality with a range of accessories.

X-TEX and Clifton kerbs: A premium alternative to traditional road kerbs, offering enhanced aesthetics for modern streetscapes.

Flooring products: We offer bespoke design and supply services for block and beam flooring, tailored to meet specific project requirements.

Retaining and dividing blocks: Designed for structural integrity and versatility they are perfect for creating durable retaining and dividing solutions in any setting.

Ballast blocks: Providing secure anchoring for solar panels and other structures, ensuring stability and longevity in diverse environments.



Our Commitment to Sustainability

At Stowell Concrete, sustainability is at the core of our operations. We are dedicated to advancing our practices with an eye toward environmental responsibility and community enhancement.

- **Achieving Net Zero Carbon Emissions by 2050:** In partnership with the Mineral Products Association, we are actively working towards reducing our carbon footprint with the goal of achieving Net Zero Carbon Emissions by 2050.
- **Enhancing Resource Efficiency:** We have implemented measures to recycle 90% of our process water and incorporate recycled products like Beneficiated Fly Ash into our concrete, significantly lowering our environmental impact.
- **Investing in Renewable Energy:** Our ongoing investments include installing solar panels to increase our reliance on renewable energy sources across our sites. With solar panels installed across all manufacturing sites; Stowell Concrete's electricity consumption is 100% renewable.
- **Innovating for a Greener Tomorrow:** We are committed to researching and developing low carbon cement alternatives and other sustainable materials to continuously improve the environmental performance of our products.
- **Promoting Biodiversity:** Our new Biodiversity Plan highlights initiatives to protect and enhance the local ecosystems around our facilities.
- **Leading by Example in Health and Safety:** As part of our commitment to our employees and community, we are striving for 'Vision Zero Safer by Competence' with the Mineral Products Association, ensuring a safer workplace through rigorous training and education.
- **Ethical and Responsible Practices:** We are committed to maintaining high ethical standards across all areas of our business, from ensuring responsible supply chain sourcing to implementing a comprehensive Modern Slavery policy and training for all our employees.

Stowell Concrete is not just building materials; we are building a sustainable future. Our proactive approach ensures that while we continue to grow and serve our customers, we also contribute positively to our planet and community.



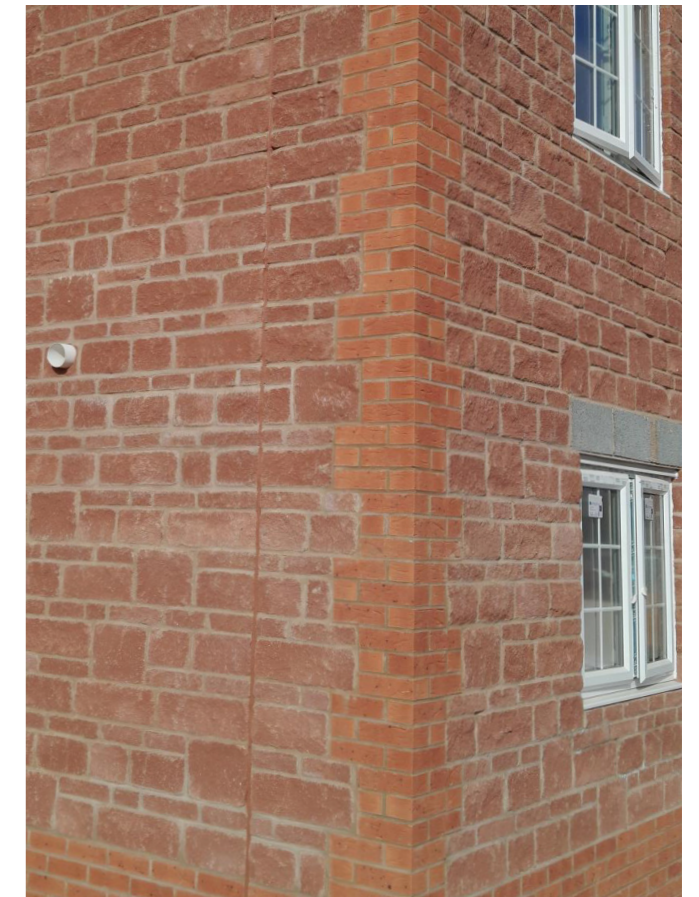
Our Dependable Service

Thanks to our long-standing relationships with trusted haulage partners, we have access to an extensive fleet of delivery options. Combined with our large stock holding, this enables us to offer a fast and dependable delivery service across the UK.

A single point of contact for all enquiries, including:

- Pricing direct to site or into yard
- Load building assistance
- Technical advice
- Sample requests

Please contact us on 01934 834000 or email sales@stowellconcrete.co.uk





Osborne House, Clevedon

The Osborne House project demonstrates how KennStone reconstituted stone can seamlessly integrate with natural stone to deliver a cohesive and high-quality aesthetic. Situated in Clevedon, North Somerset, with its idyllic sea views, the development showcases how KennStone complements the region's historic masonry, whilst meeting modern construction standards.





Yatton - Head Office

Stowell Concrete Limited
Arnolds Way
Yatton
Bristol
BS49 4QN

Tel: 01934 834000

Email: sales@stowellconcrete.co.uk

STOWELL
CONCRETE LIMITED



stowellconcrete.co.uk