

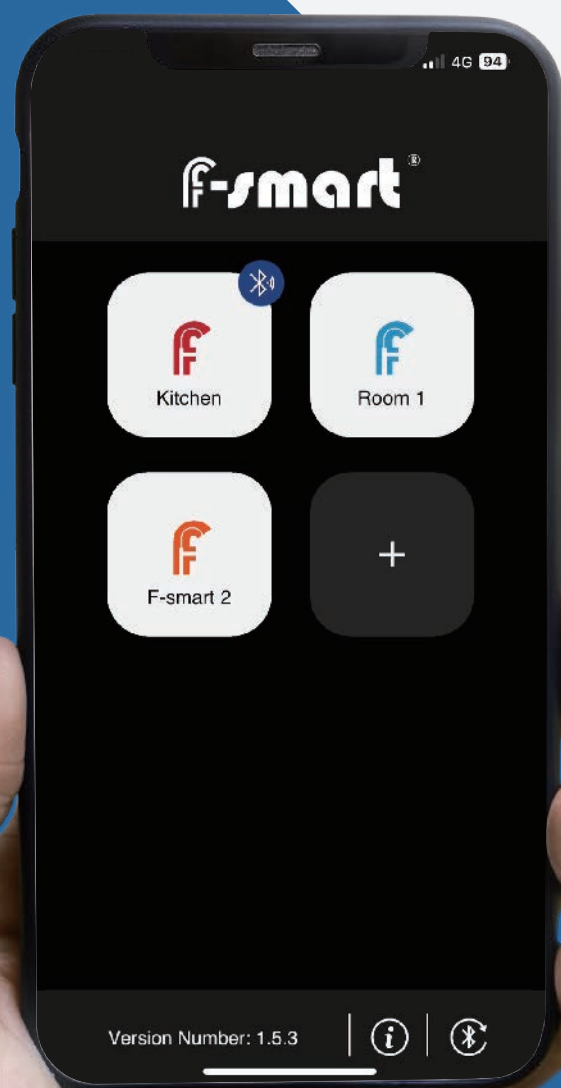
f-smart[®]

智能龍頭APP操作手冊

Installation Instruction • 安裝說明書

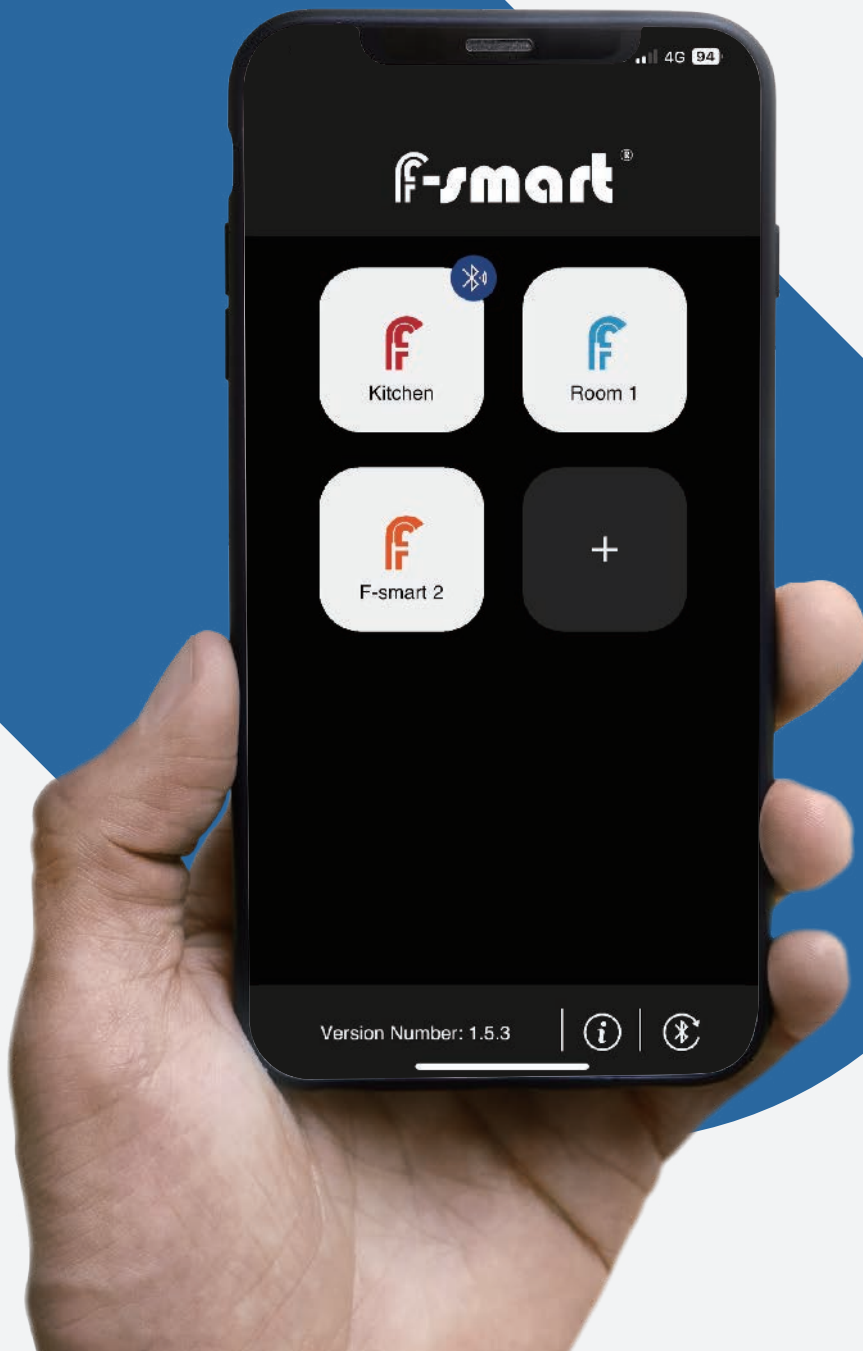


English	User manual	1
中 文	使用說明書	14



Smart Faucet APP Operation Manual

01	How to pair the bluetooth faucet on f-smart app ?	3
02	How to set capacity units ?	4
03	How to add filters ?	5
04	How to edit the information of replacement filter ?	6
05	How to remove a filter ?	7
06	How to remove the bluetooth faucet that already paired ?	8
07	Real-time flow rate	9
08	Other information.....	10-12
11	LED instructions	13



Safety instructions and precautions

In case of malfunction, please unplug immediately.

When you notice smoke or a strange smell coming from the device, unplug it immediately and be careful to avoid burns. Continued use under this condition may result in injury. Please unplug the device before sending it for repair.

Do not use in flammable gas environment.

Do not use the device in a flammable gas environment to avoid explosion or fire.

Keep out of reach of children.

Please abide by this precaution and keep the plastic packaging box of the product properly, otherwise children may be injured. Pay attention to small parts. If children accidentally swallow it, please consult a doctor immediately.

Please connect the device socket correctly.

Before connecting the device to an electrical outlet, make sure the voltage rating of the power cable is compatible with your country's power specifications. The power cord plug must be connected to a properly wired and grounded electrical outlet. Do not touch the plug with wet hands, otherwise it may cause electric shock.

Notes :

1. If you have any problems during use, you need to automatically update the corresponding version; if the problem is not solved after the update, it is recommended to reinstall the software to improve the problem.
2. The device needs to be connected to bluetooth to update the filter content. It is recommended to open the software after a period of time to update the filter data.
3. As soon as the APP exits or runs in the background, bluetooth will be immediately disconnected. You need to return to the main page to reconnect Bluetooth to update data in real time.

Certification

This product has passed the following certifications:



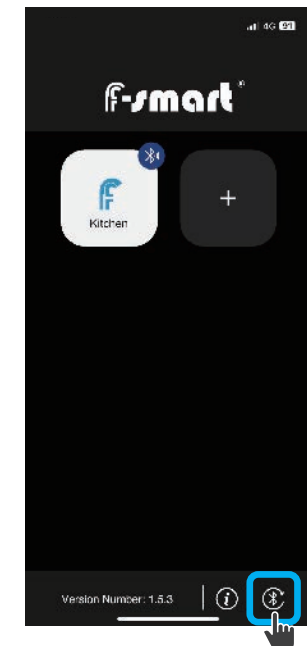
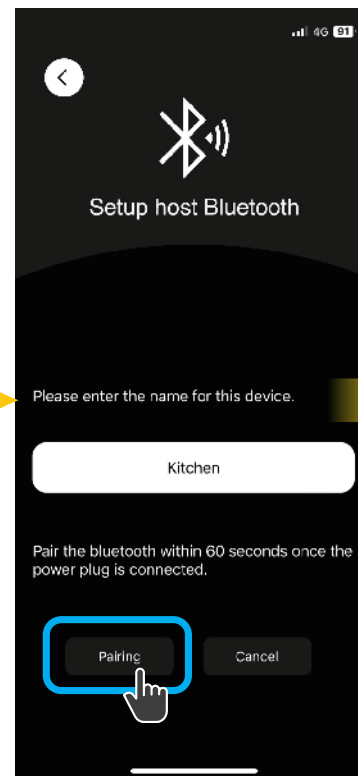
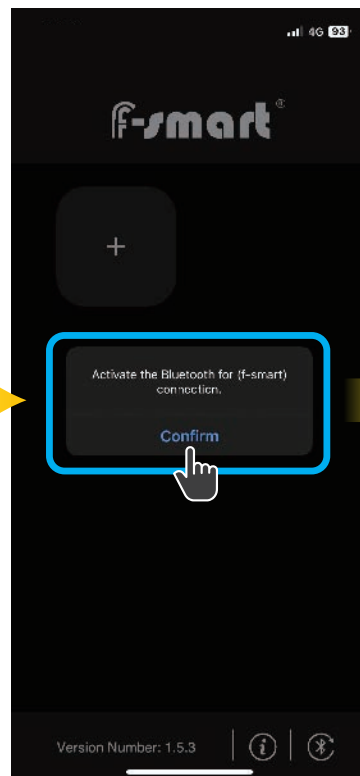
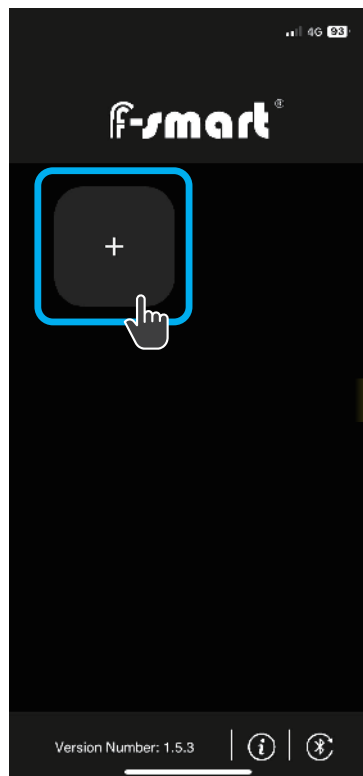
Please install the APP or update to the latest version before use.



F-smart App Download

How to pair the bluetooth faucet on f-smart app ?

- 1 Click "+" to create the faucet information.
- 2 Activate your cell phone's bluetooth for pairing.
- 3 Name your device and pair the bluetooth within 60 seconds once the power plug is connected.
- 4 The faucet will turn on the green light in the status of connection.



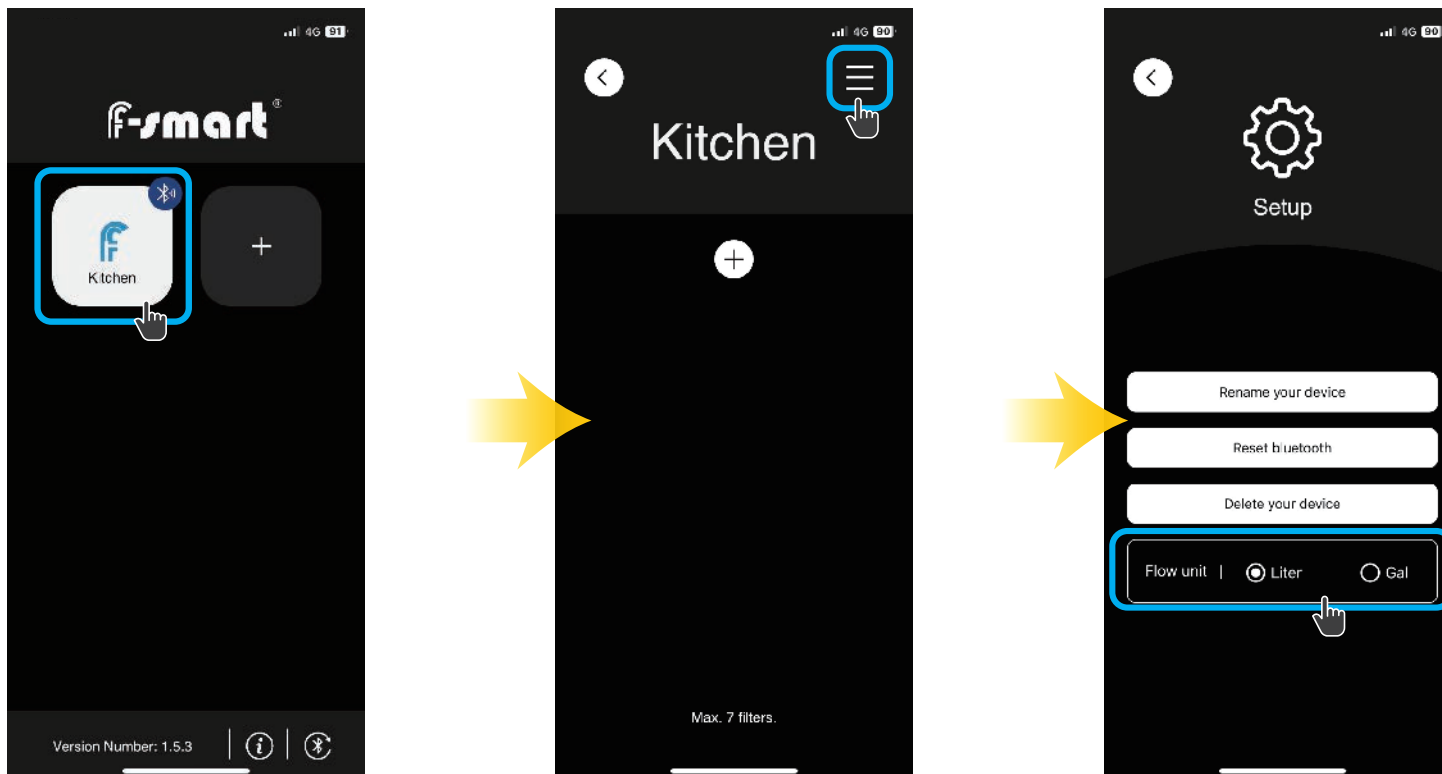
⚠ As long as exit the APP screen, it will automatically disconnected.

⚠ Need to click the bluetooth to reset the connection when back to APP screen.

⚠ Please proceeding the manipulation when the device connected.

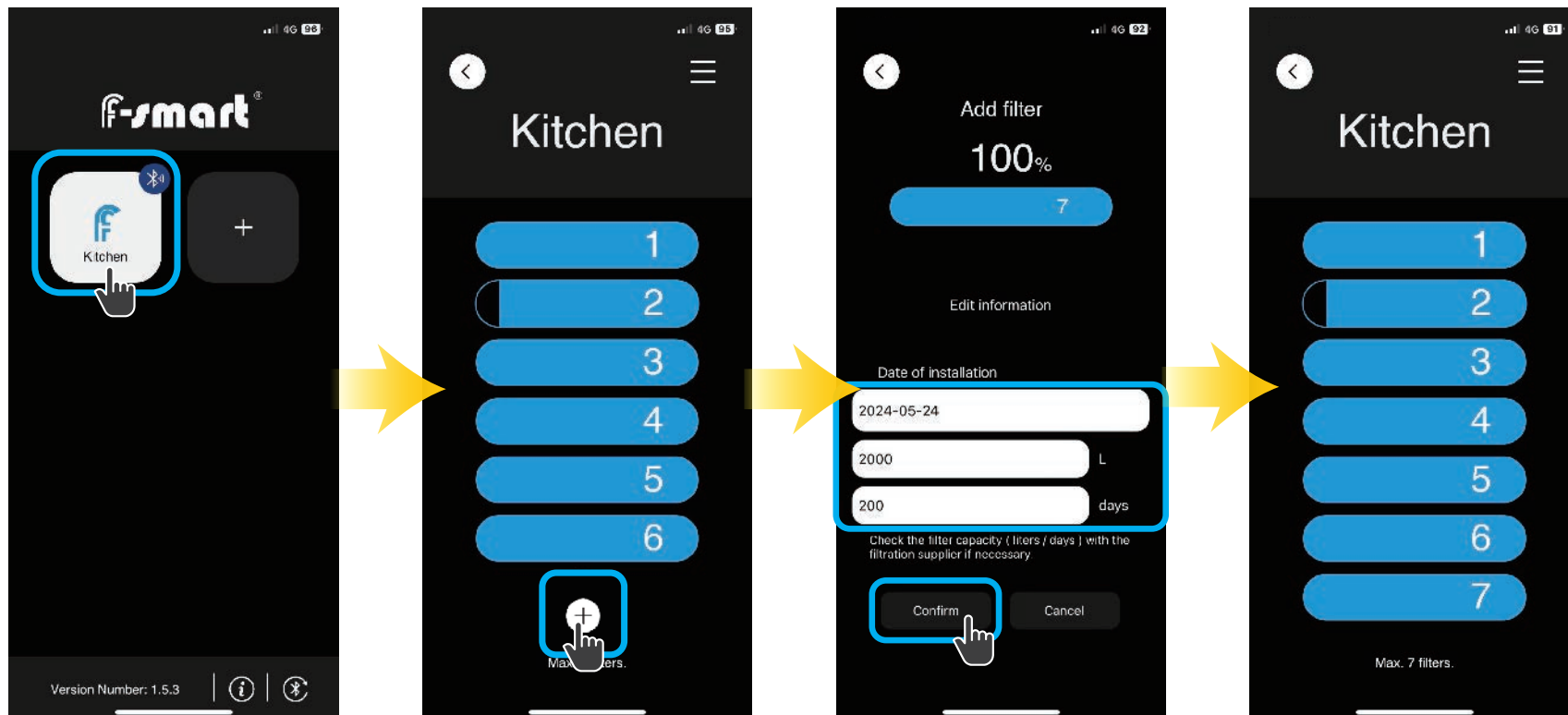
How to set capacity units ?

- 1 After the smart faucet is paired, tap the paired smart faucet device.
- 2 Click the function button in the upper right corner to go to the setting page.
- 3 The " Flow unit " below can be clicked to select the unit of capacity.
- 4 The capacity unit can be switched between " Liter " and " Gal ", and the default value is " Liter ".



How to add filters ?

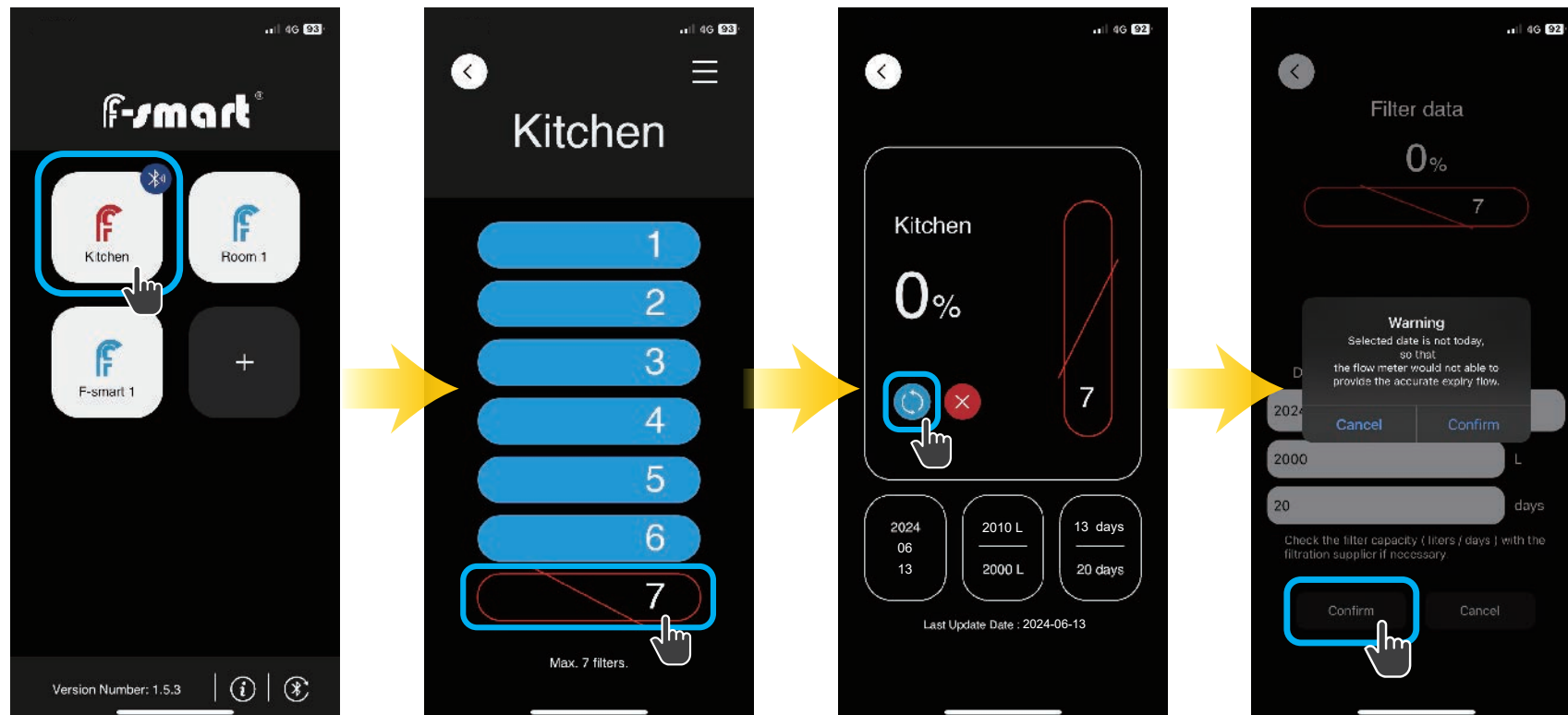
- 1 Click the device that has connected the bluetooth.
- 2 Click " + " to create a new filter's information. Every faucet device can have maximum 7 filters' information.
- 3 Fill in the installation date and its capacity.
Inaccurate date selection will lead to incorrect end date of capacity information.
- 4 Click " Confirm " to save the information.



How to edit the information of replacement filter ?

- 1 Click the device that has connected the bluetooth.
- 2 Click the filter that you want to edit the information.
- 3 Click blue button for replacing the new filter.
- 4 Fill in the installation date and its capacity.

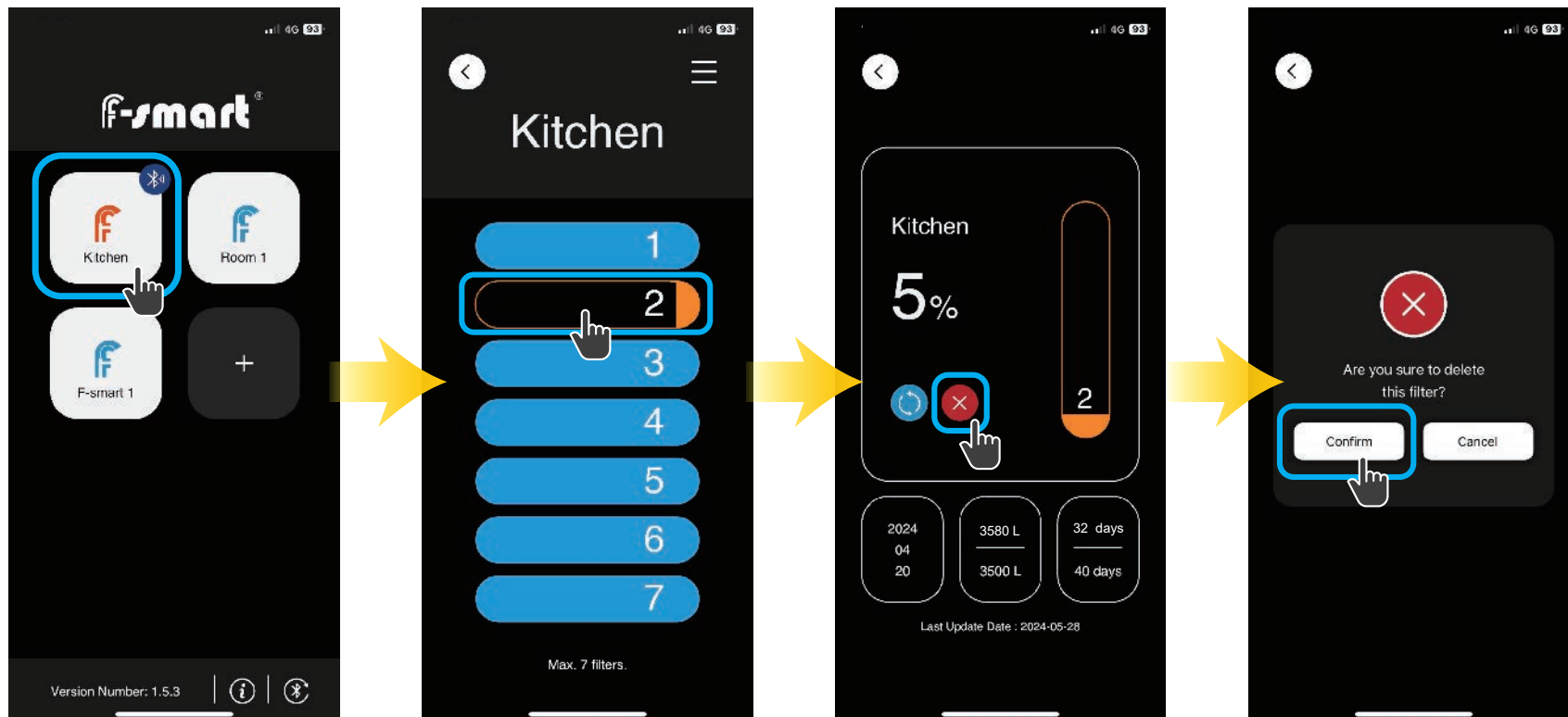
Inaccurate date selection will lead to incorrect end date of capacity information.



How to remove a filter ?

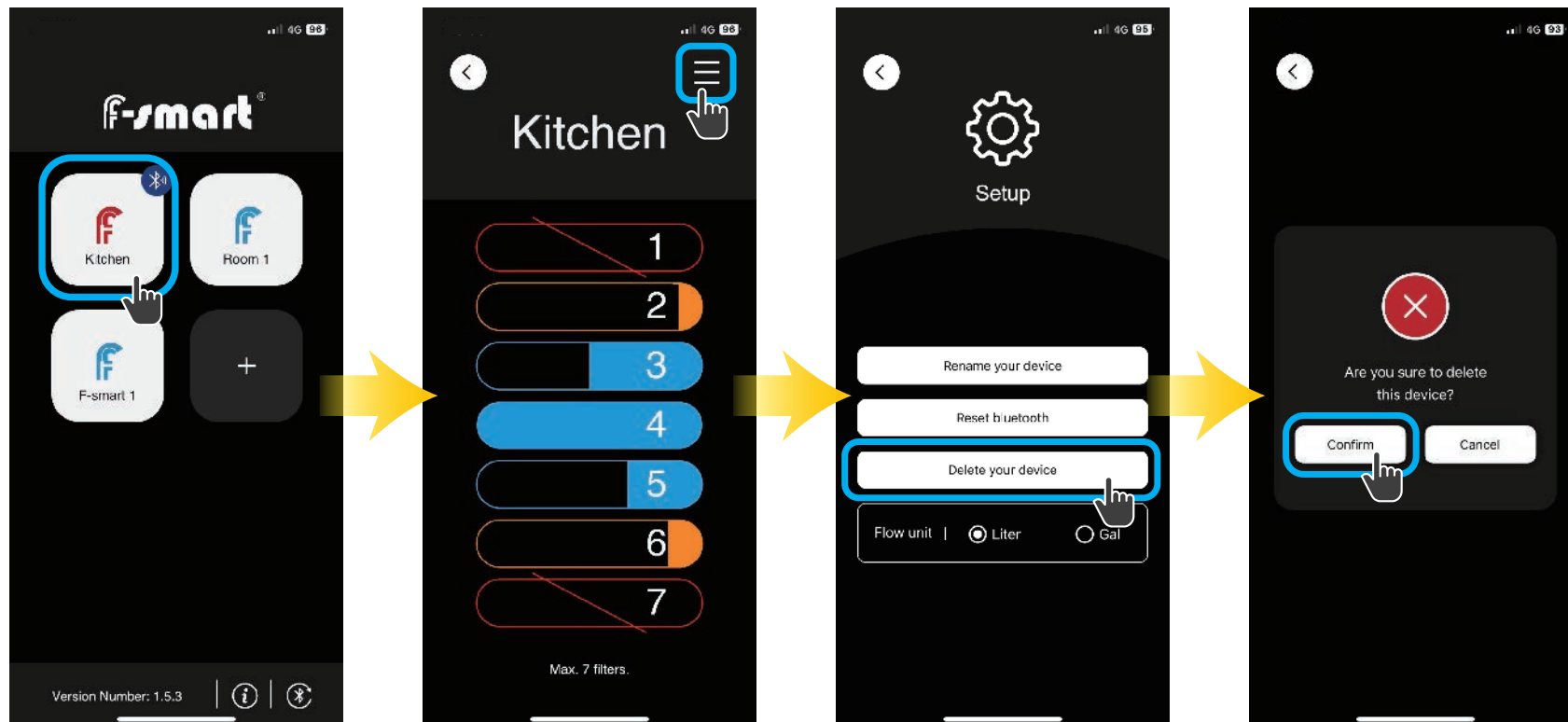
- 1 Click the device that has connected the bluetooth.
- 2 Click the filter that you want to remove.
- 3 Click red button for removing the filter.
- 4 Click " Confirm ".

Information cannot be recovered once deleted.



How to remove the bluetooth faucet that already paired ?

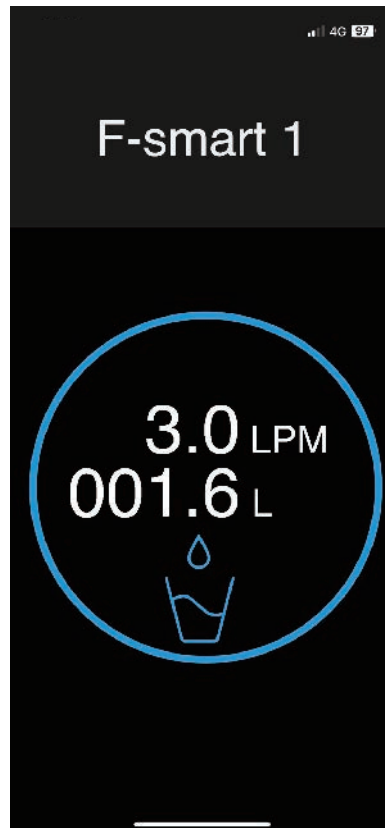
- 1 Click the device that has connected the bluetooth.
- 2 Click menu on the top right.
- 3 Click " Delete your device " .
- 4 Click " Confirm " to delete the device.



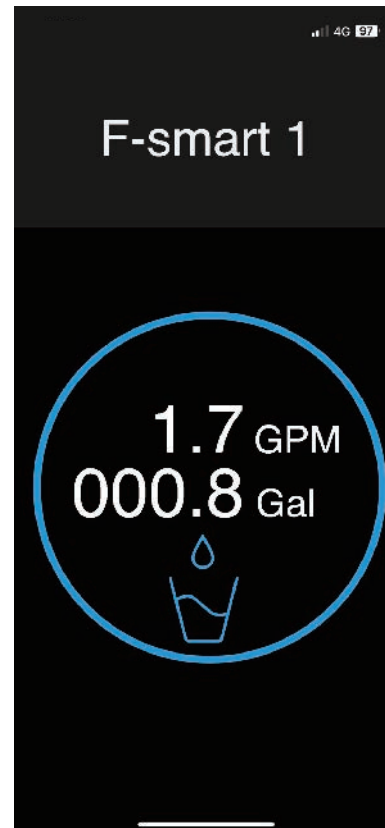
Real-time flow rate

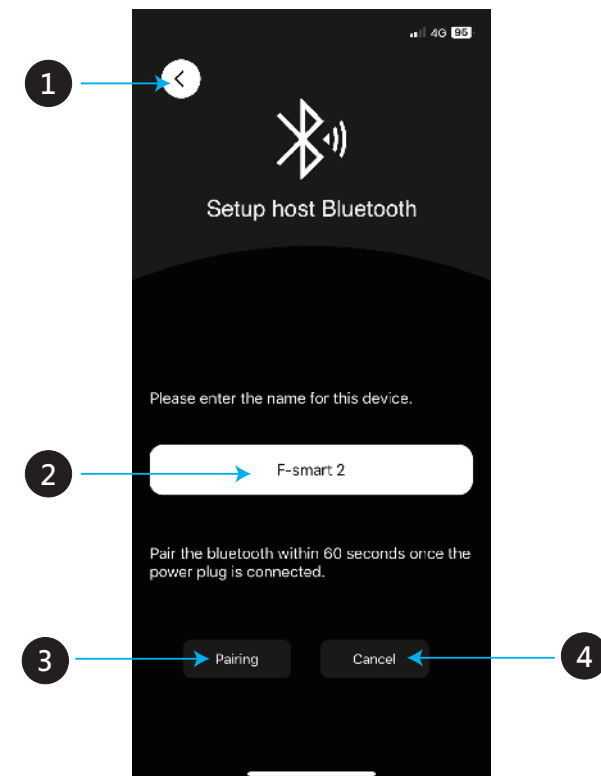
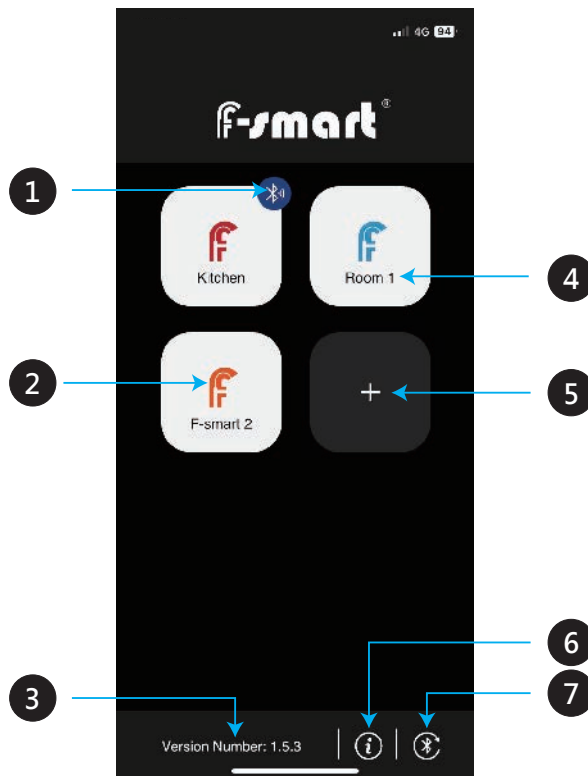
When connecting device of bluetooth and using the faucet , it will show the real-time flow rate on screen.

Liter Mode
LPM (Liter/Min)



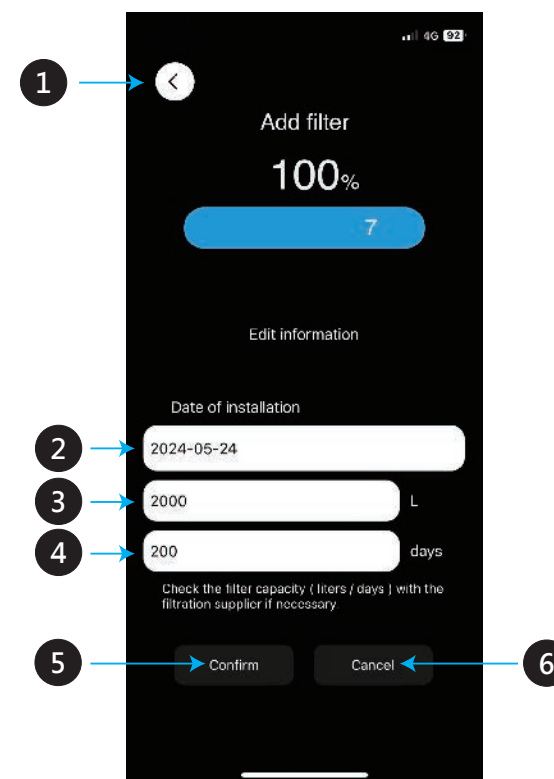
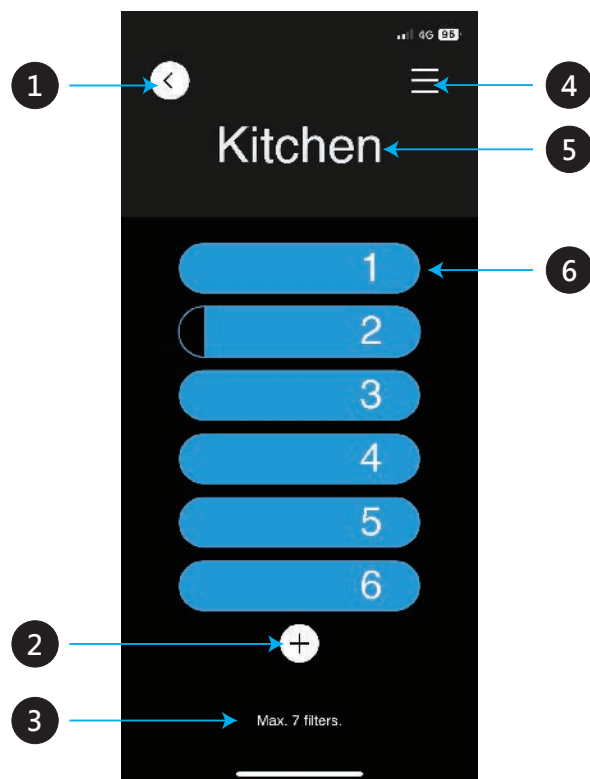
Gallon Mode
GPM (Gal/Min)





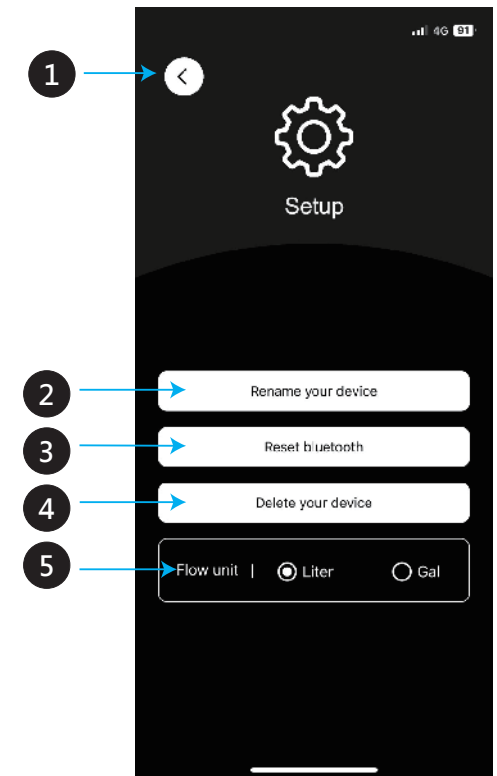
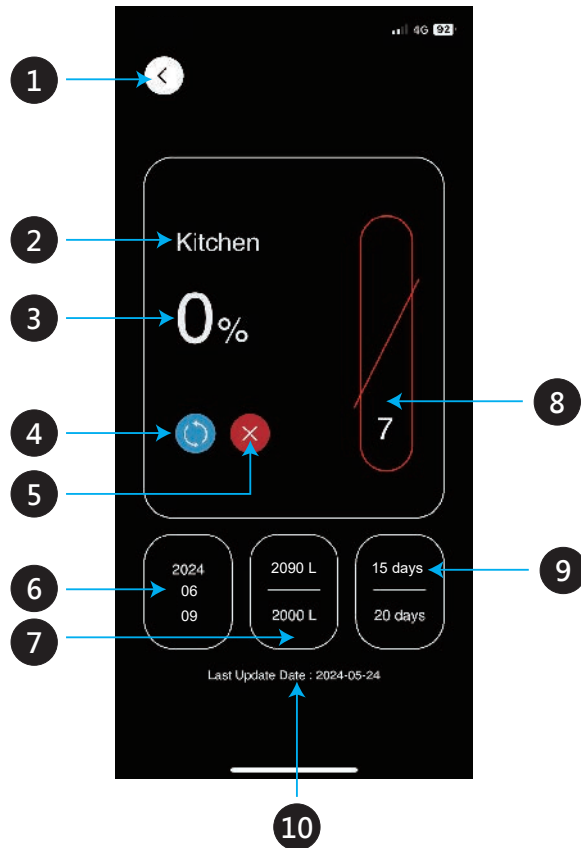
- | | |
|--|---|
| <p>1 Connected to the faucet.</p> <p>2 There are three colors to indicate the usage status of filtration systems. And you can click the device to check detail.</p> <p>Blue: Filter's status is normal.
 Orange: Filter's capacity is going to be full.
 Red: Filter has reached its capacity.</p> | <p>3 Version number</p> <p>4 Device name</p> <p>5 Click + to add for more device.
 (max for 100 devices)</p> <p>6 Click i for manual on our website.</p> <p>7 Click to refresh the bluetooth.</p> |
|--|---|

- | | |
|--|-------------------------|
| <p>1 Back</p> <p>2 Name the device</p> <p>3 Pair the bluetooth within 60 seconds once the power plug is connected.</p> | <p>4 Cancel pairing</p> |
|--|-------------------------|



- 1 Back
- 2 Fill in the installation date and its capacity.
- 3 Max for 7 filters
- 4 Menu
- 5 Device name
- 6 Filter's status

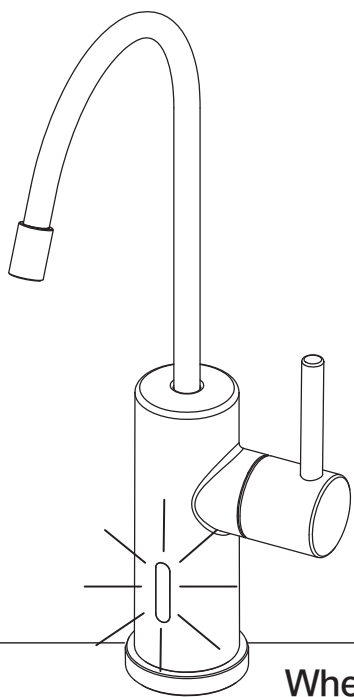
- 1 Back
- 2 Fill in filter's information for install date and its capacity.
(Inaccurate date selection will lead to incorrect end date of capacity information.)
- 3 Fill in filter's expiry capacity.
(To ensure data accuracy, the capacity must be at least 10 liters or 3 gallons.)
- 4 Fill in the days of expiration.
- 5 Confirm
- 6 Cancel



- 1 Back
- 2 Device name
- 3 Remaining capacity
- 4 Replacing the filter
- 5 Delete the filter
- 6 Installation date

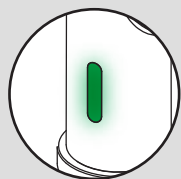
- 7 Indicates filter used capacity / remaining capacity.
- 8 Indicate the percentage for remaining capacity. Blue is normal. Orange: warning. Red: reach to its capacity.
- 9 Indicate the filter's remaining days / capacity days
- 10 Last update date

- 1 Back
- 2 Rename your device
- 3 Reset bluetooth
- 4 Delete device
- 5 Unit conversion (Liter / Gal)



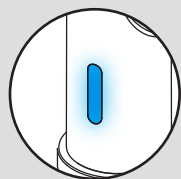
LED instructions

When the power is connected, the LED indicator will flash green, blue, orange and red. When the LED indicator flashes in different colors, the meaning is as follows:



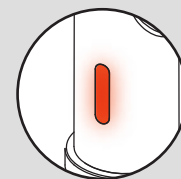
**Green light
blinks**

60 seconds for
pairing the
bluetooth faucet.



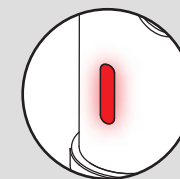
**Blue light
blinks**

Filter's status is
normal.



**Orange light
blinks**

Filter's status is
going to be due.

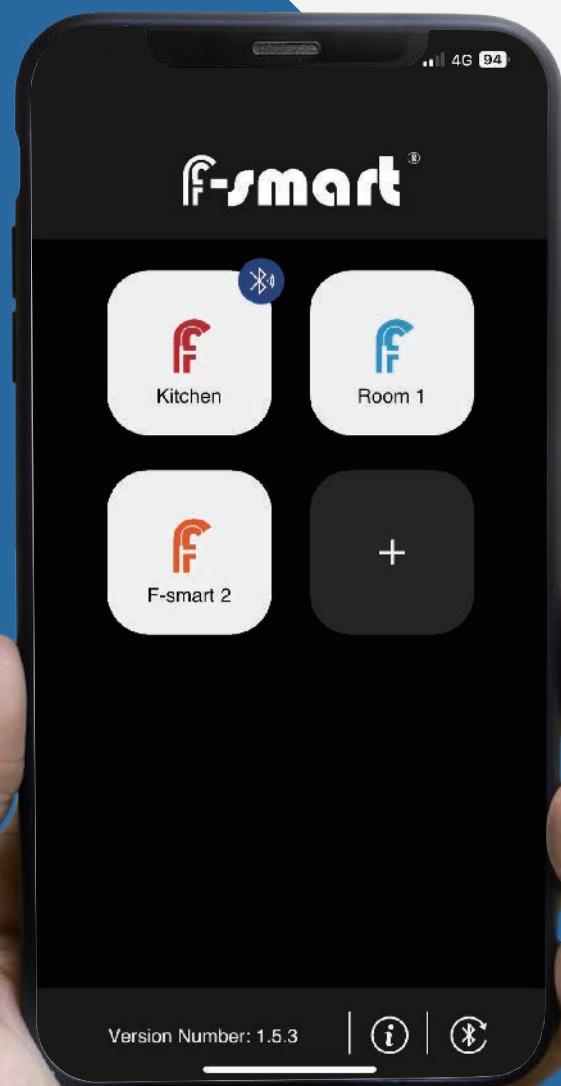


**Red light
blinks**

Time to replace
the new filter.

f-smart®

智能龍頭APP操作手冊



01 如何配對智能龍頭?16

02 如何設定容量單位?17

03 如何新增濾心?18

04 如何更換濾心資料?.....19

05 如何刪除濾心?.....20

06 如何刪除已配對的智能龍頭?.....21

07 即時流量.....22

08 頁面功能介紹23-25

11 流量龍頭燈號說明26

安全須知與注意事項

發生故障時請立刻拔掉插頭

當您發現本裝置冒煙或發出異味時，請立即拔掉插頭，注意避免被灼傷。若在此情形下繼續使用，將可能導致受傷。請在拔掉插頭後，將裝置送修。

請勿在易燃氣體環境中使用

請勿在易燃氣體環境中使用裝置，以避免發生爆炸或者火災。

避免放在兒童伸手可及之處

請遵守此注意事項，並妥善保管產品的塑膠包裝盒，否則可能導致兒童受傷。注意細小部分零件，若兒童誤食請立即諮詢醫師。

請正確的連接裝置插座

在連接裝置至電源插座之前，請確定電源纜線的電壓額定值相容於您所在國家的電源規格。電源線插頭必須連接至正確接線與接地的電源插座。請勿用濕手接觸插頭，否則很容易會造成觸電。

認證

此產品通過



注意事項：

1. 若使用上有任何問題，需自動更新相對應版本；若更新完沒有解決問題，建議重新安裝軟體改善問題。
2. 裝置需連接藍牙才能更新濾心內容，建議一段時間就要開啟軟體更新濾心資料。
3. APP只要退出或者於背景程式運作會立即斷開藍牙，需回主頁面重新連接藍牙，才能即時更新資料。

使用前請先安裝APP或更新至最新版本

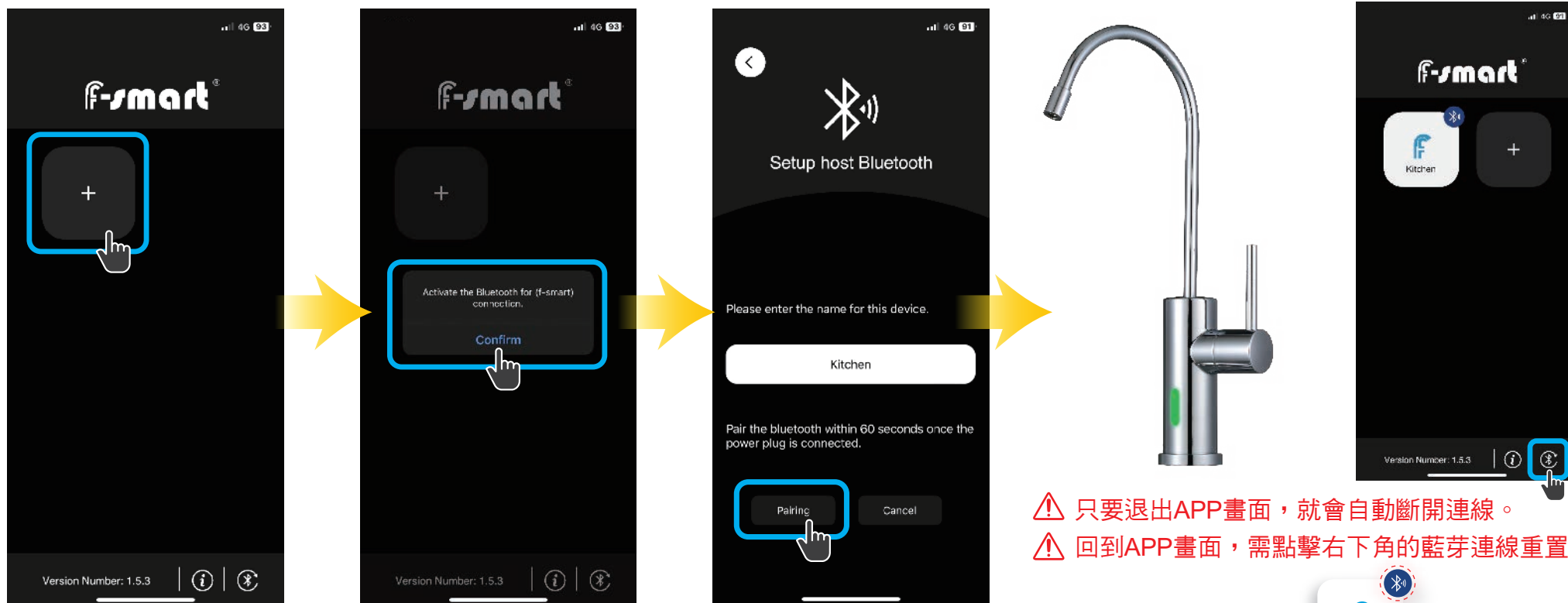


F-smart App Download



如何配對智能龍頭？

- 1 輕觸「+」新增f-smart智能龍頭裝置。
- 2 如需配對裝置，您的手機必須先打開藍牙。
- 3 可以隨意命名裝置名稱，輕觸「Pairing」配對裝置請於龍頭插上電源的60秒內完成配對。
- 4 成功連線中的狀態，龍頭會亮綠燈。



- ⚠ 只要退出APP畫面，就會自動斷開連線。
- ⚠ 回到APP畫面，需點擊右下角的藍芽連線重置按鈕。

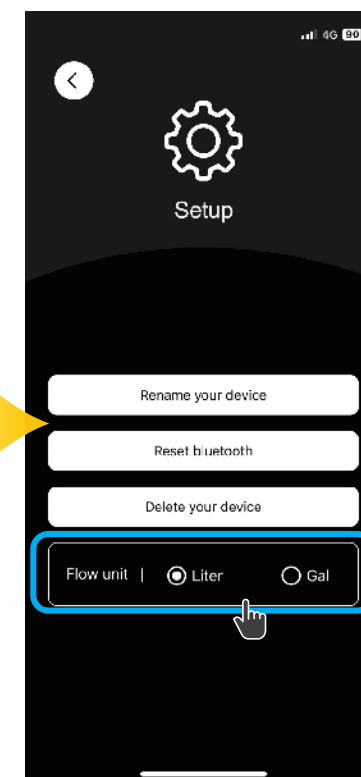
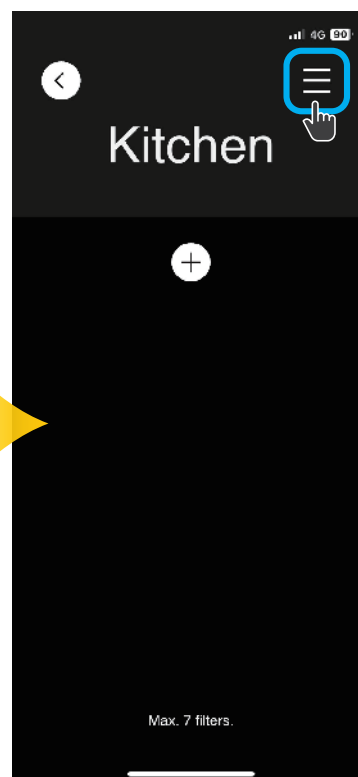
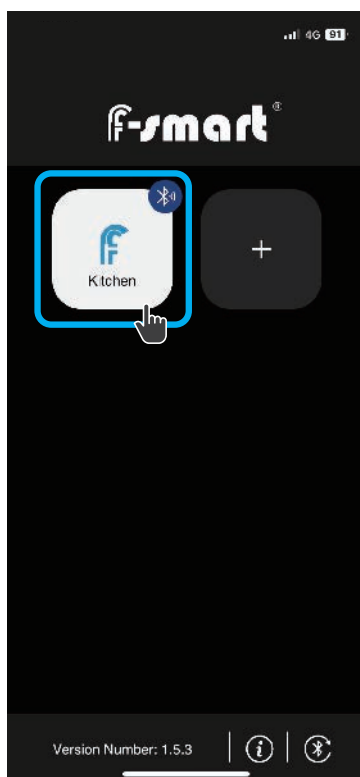
⚠ 確認變為”已連線”



狀態在進行操作。

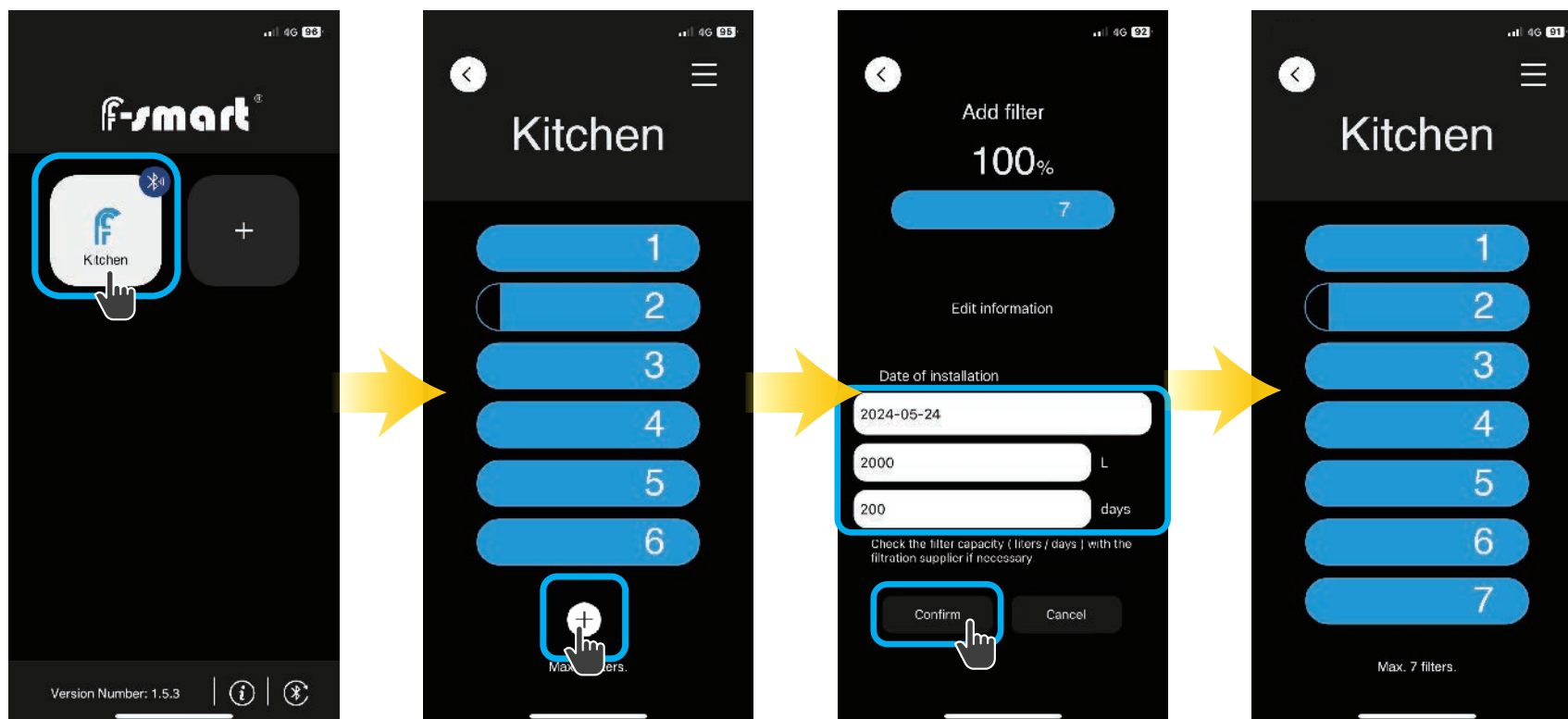
如何設定容量單位？

- 1 智能龍頭配對完後，輕觸已配對智能龍頭裝置。
- 2 觸右上角功能按鈕，即可來到設定頁面。
- 3 下方「Flow unit」可用點選方式，選擇容量的使用單位。
- 4 容量單位有「Liter」及「Gal」可切換，預設值為「Liter」。



如何新增濾心?

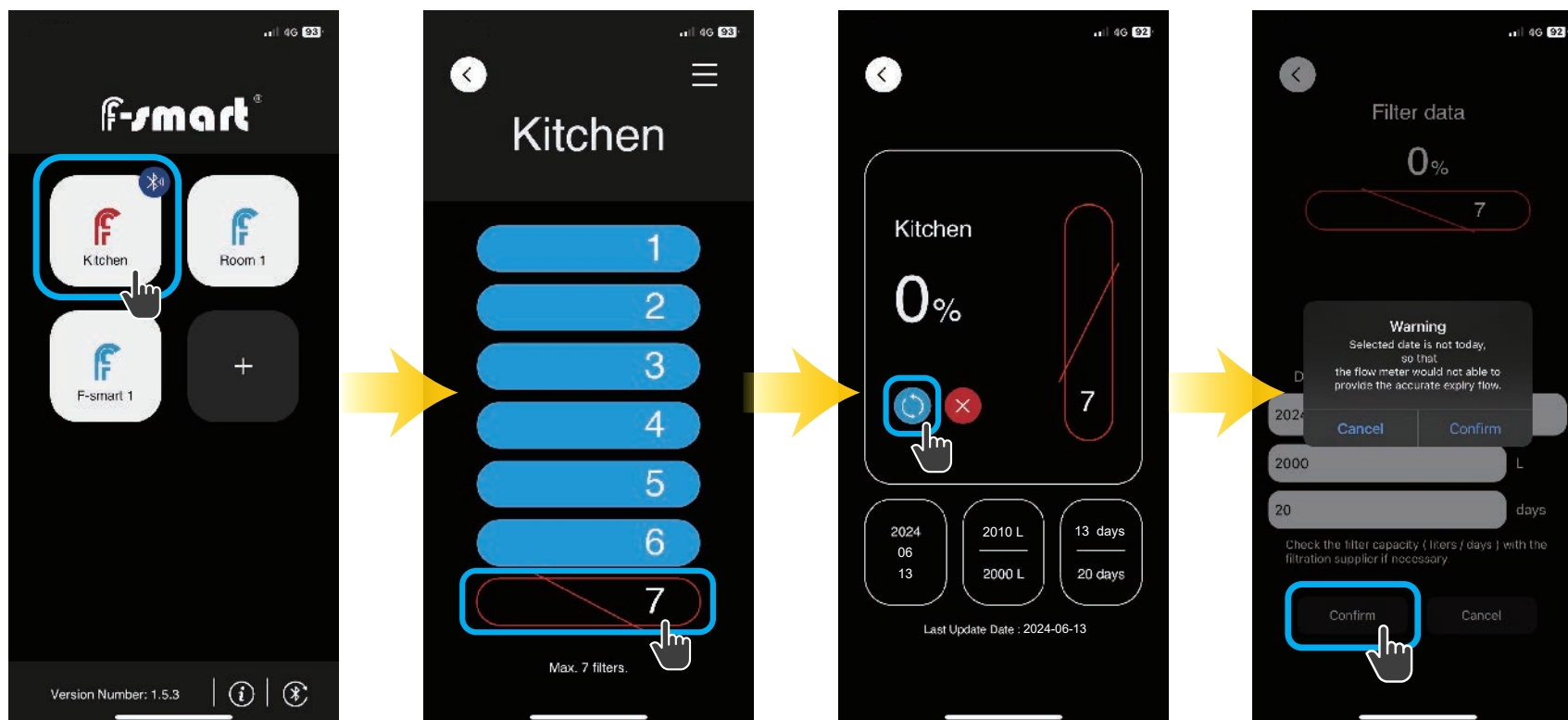
- 1 輕觸已經連上藍牙的智能龍頭裝置。
- 2 點選「+」新增個別濾心資料，每個裝置最多可以新增七道濾心。
- 3 填入相對應濾心的個別資料，安裝日期等。
若是輸入日期非當天日期，將會導致流量數據不準確；系統會自行判斷非當天日期時，所剩的濾心使用率。
- 4 輕觸「Confirm」後即完成新增濾心。



如何更換濾心資料?

- 1 輕觸已經連上藍牙的智能龍頭裝置。
- 2 輕觸要更換的濾心。
- 3 輕觸藍色更換濾心按鈕。
- 4 填入相對應濾心的個別資料，安裝日期等，並輕觸「Confirm」後即完成更換濾心。

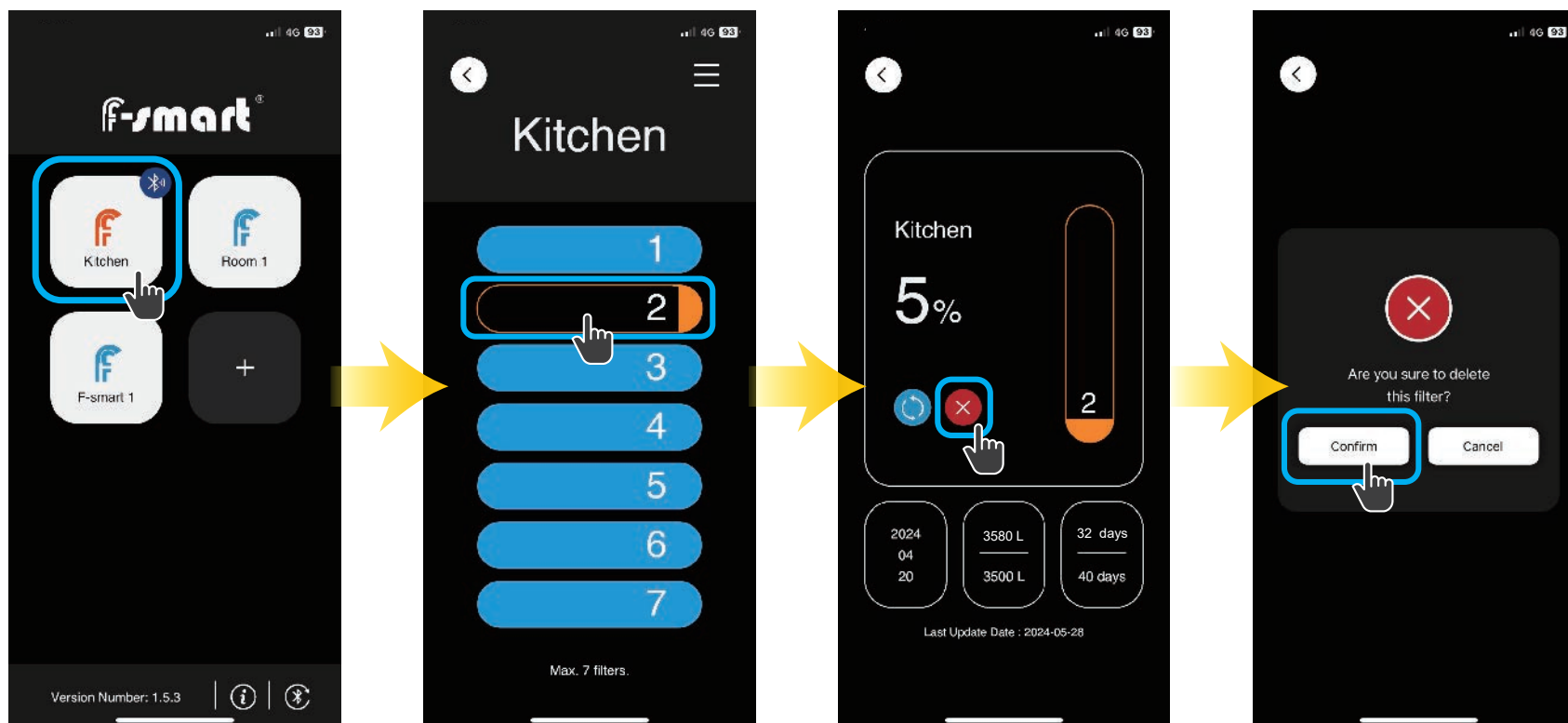
若是輸入日期非當天日期，將會導致流量數據不準確；系統會自行判斷非當天日期時，所剩的濾心使用率。



如何刪除濾心?

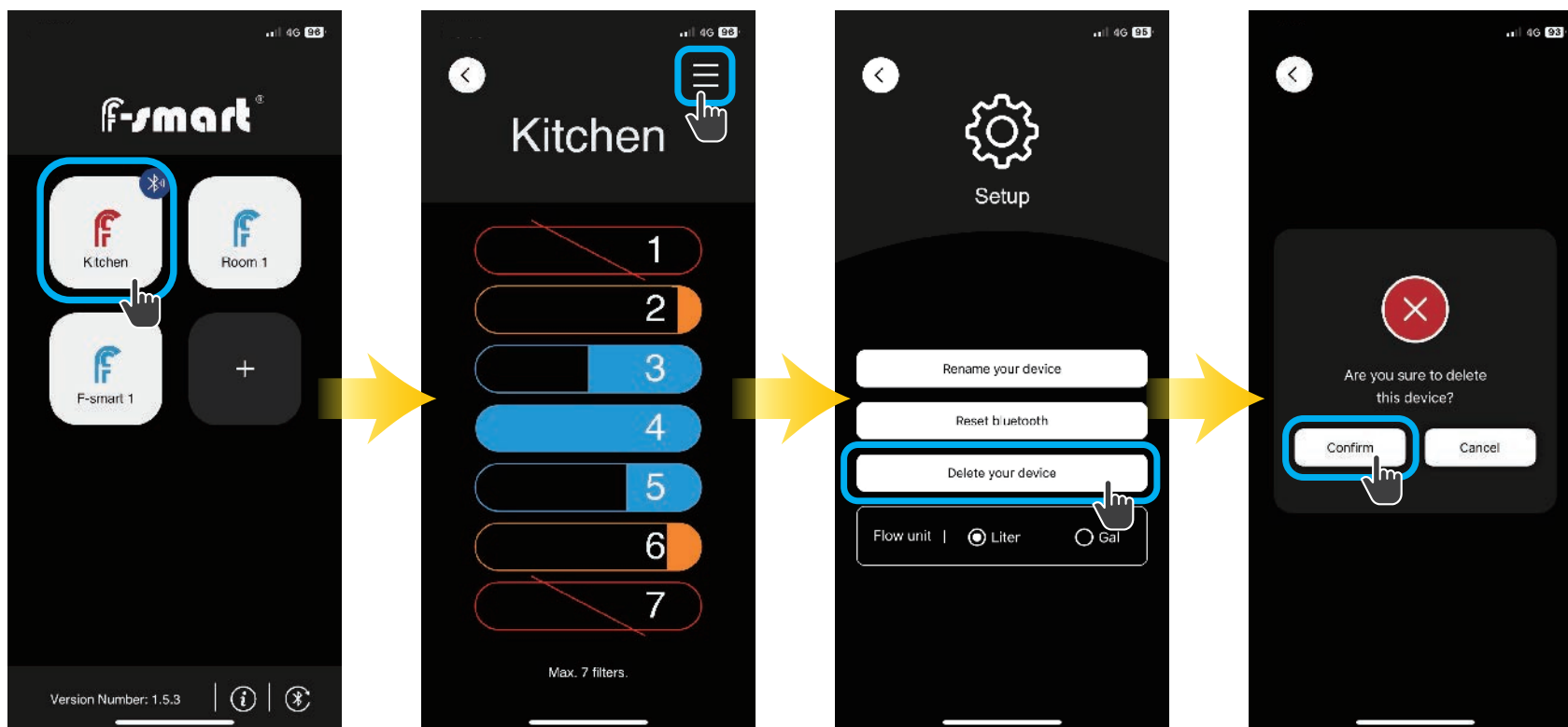
- 1 輕觸已經連上藍牙的智能龍頭裝置。
- 2 輕觸要刪除的濾心。
- 3 輕觸紅色刪除濾心按鈕。
- 4 輕觸「Confirm」後即完成刪除濾心。

注意：刪除後資料無法復原。



如何刪除已配對的智能龍頭？

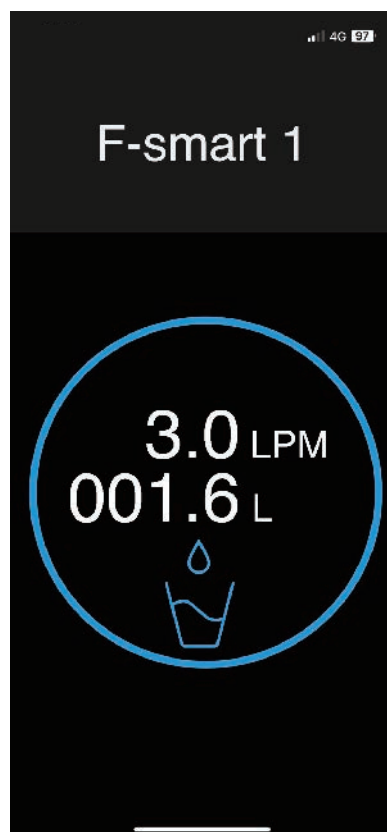
- 1 輕觸要刪除的智能龍頭裝置。
- 2 觸右上角功能按鈕。
- 3 輕觸「Delete your device」按鈕。
- 4 輕觸「Confirm」後即完成刪除智能龍頭裝置。



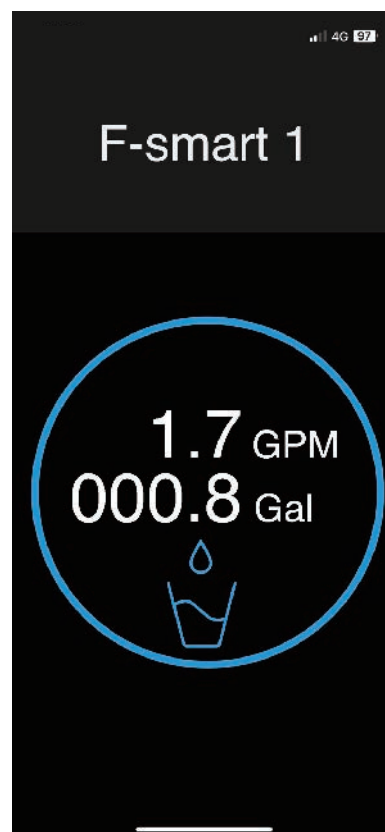
即時流量

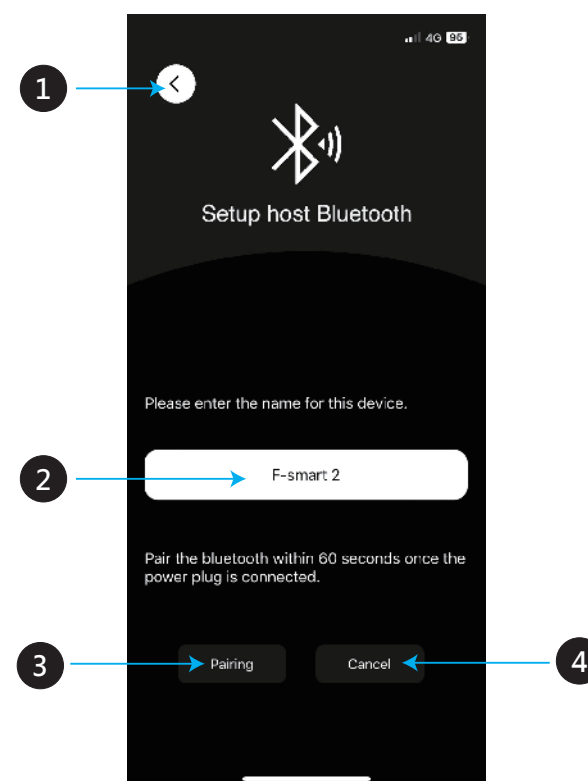
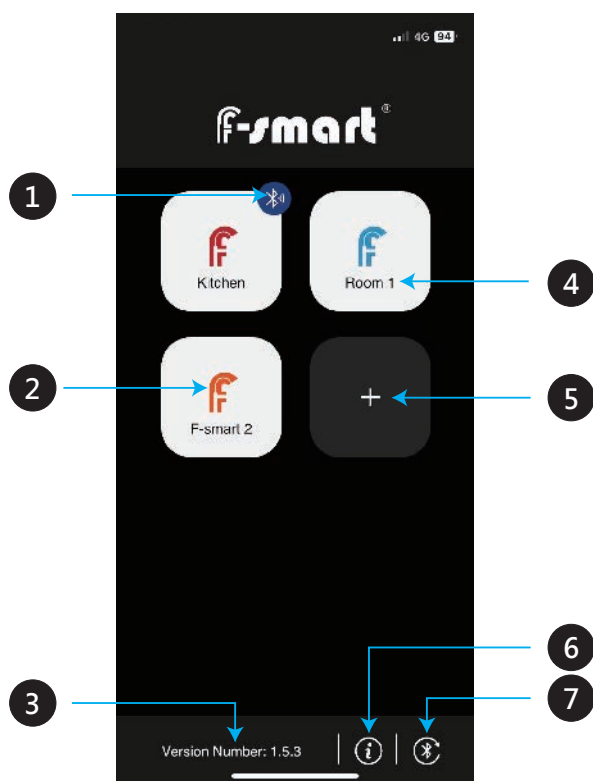
若用藍牙連接裝置並且使用龍頭時，將會有即時流量畫面。

Liter 單位狀態
LPM (Liter/Min)



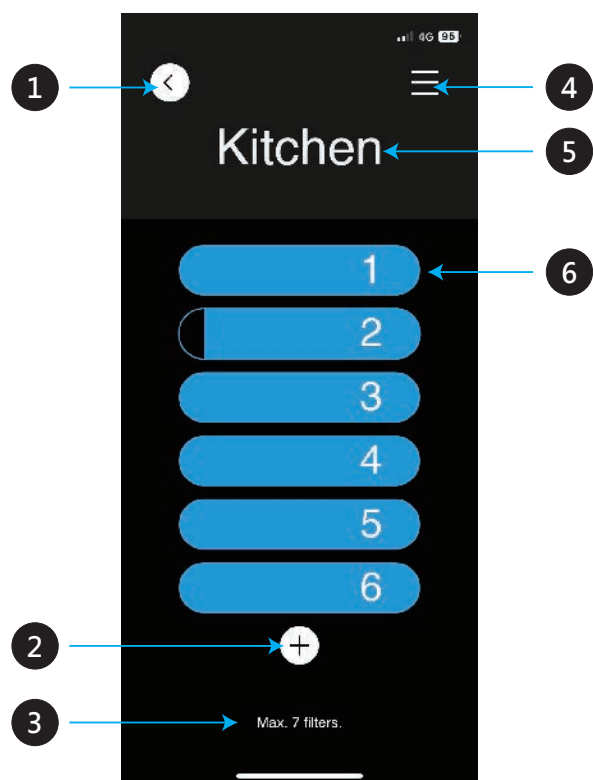
Gallon單位狀態
GPM (Gal/Min)



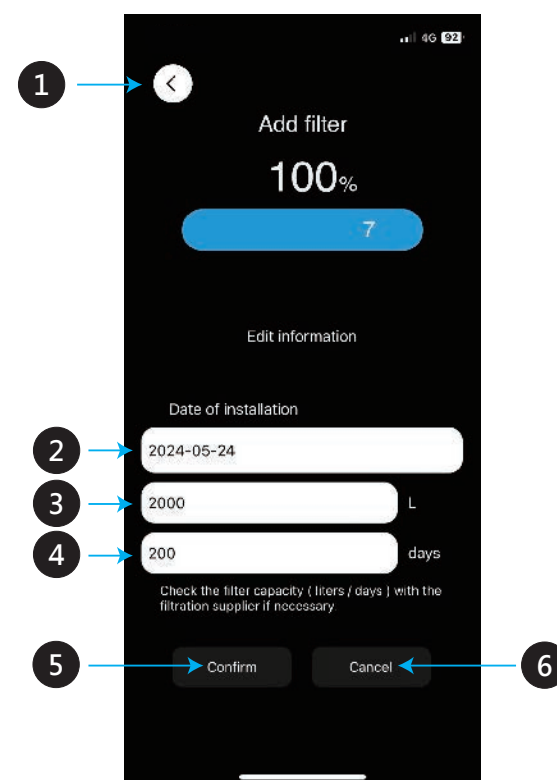


- | | |
|--|-----------------------|
| 1 此裝置藍牙連線中 | 4 裝置名稱 |
| 2 圖示將顯示裝置最緊急濾心狀態，輕觸觀看更多詳細資訊。
藍色：該裝置濾心狀態正常
橘色：該裝置有濾心快到期
紅色：該裝置有濾心已到期 | 5 輕觸新增裝置，最多可以管理100個裝置 |
| 3 版本資訊 | 6 連接至使用說明書網站 |
| | 7 輕觸後藍牙重整 |

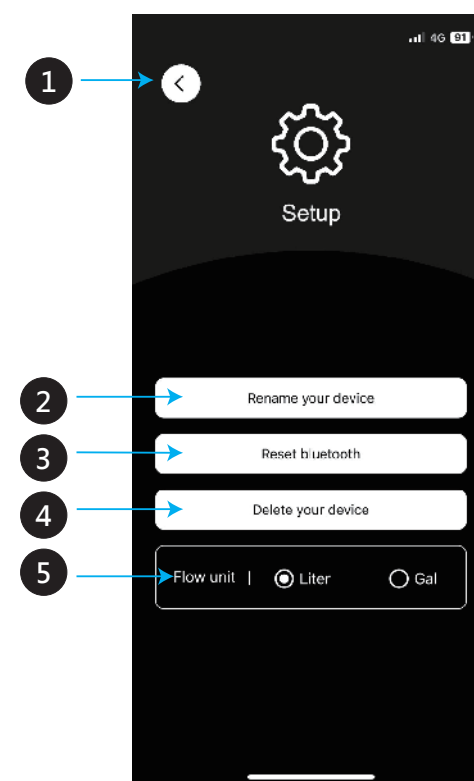
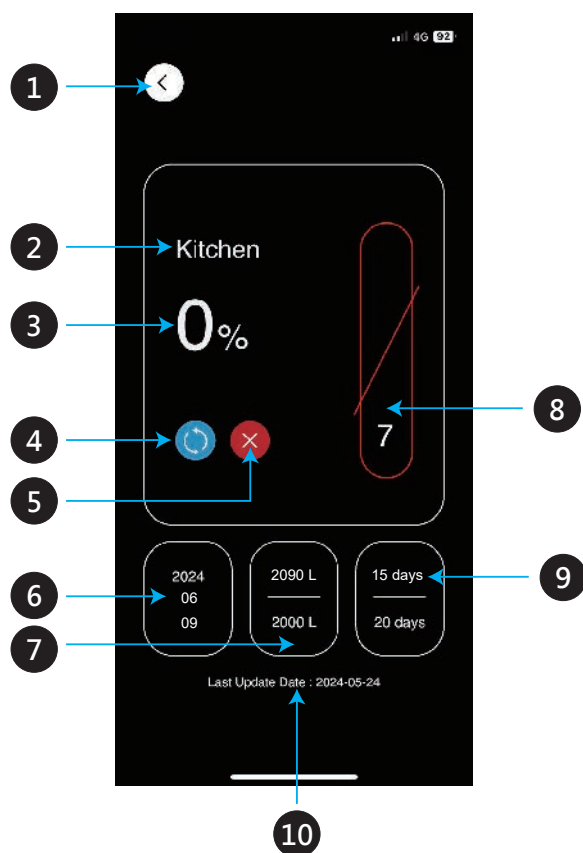
- | |
|----------------------|
| 1 返回鍵 |
| 2 可以任意命名裝置名稱 |
| 3 請於龍頭插上電源的60秒內完成配對。 |
| 4 取消配對 |



- 1 返回鍵
- 2 新增濾心按鈕
- 3 最多可以新增七道濾心
- 4 其他功能表
- 5 裝置名稱
- 6 濾心即時狀態顯示



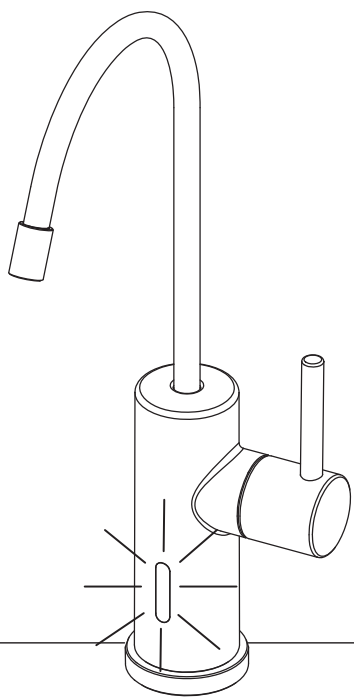
- 1 返回鍵
- 2 選擇濾心的安裝日期，可以自訂時間，但會導致公升數據不準確
- 3 請輸入濾心有效容量數
(為保數據準確性，容量至少10公升或3加侖)
- 4 請輸入濾心有效天數
- 5 確認
- 6 取消



- 1 返回鍵
- 2 裝置名稱
- 3 濾心剩餘百分比
- 4 更換濾心按鍵
- 5 刪除濾心按鍵
- 6 濾心安裝日期

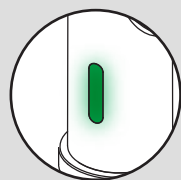
- 7 濾心已使用容量數/濾心可使用容量數
- 8 相對應濾心代號，並依照顏色與百分比顯示，藍色為濾心壽命正常，橙色為濾心壽命警告，紅色為濾心壽命到期
- 9 濾心已使用天數/濾心可使用天數
- 10 裝置最後一次連接藍牙更新資料日期

- 1 返回鍵
- 2 重新命名裝置名稱
- 3 藍牙配對設定
- 4 刪除裝置
- 5 單位轉換 (Liter / Gal)



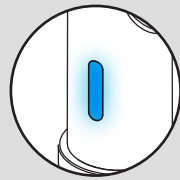
流量龍頭燈號說明

當連接電源時龍頭會先閃爍綠藍橘紅，龍頭閃爍不同顏色時，代表的意思如下：



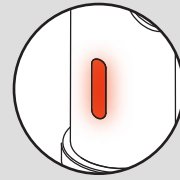
綠色閃爍燈

這時候將有60秒時間可以進行藍牙配對龍頭。



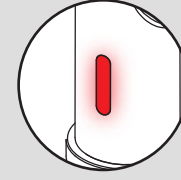
藍色閃爍燈

此裝置全部濾心狀態正常。



橘色閃爍燈

某道濾心效期將至，請藍牙連接APP查看詳細內容。



紅色閃爍燈

某道濾心需要更換，請藍牙連接APP查看詳細內容。