



South Central Kansas MLS

## South Central Kansas MLS

170 W. Dewey, Wichita, KS 67202

[www.sckrealtors.com](http://www.sckrealtors.com)

June 4, 2026

### South Central Kansas MLS Releases Home Sales Figures for May 2026

Home sales in South Central Kansas fell by 4.3% in May compared to the prior year. Sales in May 2026 totaled 1,097 units, down from 1,146 in 2025.

Among existing homes, 812 units sold in May, a decrease of 6.5% from 868 units that sold in 2025. The average sale price of existing homes was \$284,955. This represents an increase of 7.5% from the May 2025 average price of \$265,124.

For new construction, 110 sales occurred in May, down from 114 units the prior year, a decrease of 3.5%. The average sale price of new homes in May was \$350,601, down 5.0% from the same period last year.

A total of 1,033 contracts for sale were written in May 2026, up from 1,031 in May 2025. This is an increase of 0.2%. Contracts written during the month reflect, in part, sales that are set to close in the near future.

The inventory of active listings in South Central Kansas stood at 2,135 units at the end of May, which is up from 2,048 homes that were on the market at the end of May last year. At the current rate of sales, this figure represents 2.3 months' supply of homes on the market.

For questions and/or comments, please contact South Central Kansas MLS President Brandon Baker at [brandonb@thecarnahangroup.com](mailto:brandonb@thecarnahangroup.com).





**May  
2026**

# South Central Kansas MLS Statistics



South Central Kansas MLS

## Entire MLS System Housing Report



### Market Overview

#### South Central Kansas Home Sales Fell in May

Total home sales in South Central Kansas fell last month to 1,097 units, compared to 1,146 units in May 2025. Total sales volume was \$306.1 million, down from a year earlier.

The median sale price in May was \$250,000, up from \$240,000 a year earlier. Homes that sold in May were typically on the market for 9 days and sold for 100.0% of their list prices.

#### South Central Kansas Active Listings Up at End of May

The total number of active listings in South Central Kansas at the end of May was 2,135 units, up from 2,048 at the same point in 2025. This represents a 2.3 months' supply of homes available for sale. The median list price of homes on the market at the end of May was \$260,000.

During May, a total of 1,033 contracts were written up from 1,031 in May 2025. At the end of the month, there were 1,417 contracts still pending.

### Report Contents

- Summary Statistics – Page 2
- Closed Listing Analysis – Page 3
- Active Listings Analysis – Page 7
- Months' Supply Analysis – Page 11
- New Listings Analysis – Page 12
- Contracts Written Analysis – Page 15
- Pending Contracts Analysis – Page 19

### Contact Information

Wendy Carter, President  
 South Central Kansas MLS  
 170 W. Dewey  
 Wichita, KS 67202  
[wendy.carter@penfedrealty.com](mailto:wendy.carter@penfedrealty.com)  
[www.sckrealtors.com](http://www.sckrealtors.com)



**May  
2026**

# South Central Kansas MLS Statistics



South Central Kansas MLS

## Entire MLS System Summary Statistics

May MLS Statistics Three-year History		Current Month			Year-to-Date		
		2026	2025	2024	2026	2025	2024
<b>Home Sales</b>		<b>1,097</b>	<b>1,146</b>	<b>1,058</b>	<b>4,327</b>	<b>4,171</b>	<b>4,146</b>
Change from prior year		-4.3%	8.3%	-2.1%	3.7%	0.6%	1.3%
<b>Active Listings</b>		<b>2,135</b>	<b>2,048</b>	<b>1,528</b>	<b>N/A</b>	<b>N/A</b>	<b>N/A</b>
Change from prior year		4.2%	34.0%	29.9%			
<b>Months' Supply</b>		<b>2.3</b>	<b>2.3</b>	<b>1.7</b>	<b>N/A</b>	<b>N/A</b>	<b>N/A</b>
Change from prior year		0.0%	35.3%	30.8%			
<b>New Listings</b>		<b>1,283</b>	<b>1,420</b>	<b>1,267</b>	<b>5,902</b>	<b>5,932</b>	<b>5,566</b>
Change from prior year		-9.6%	12.1%	6.6%	-0.5%	6.6%	5.8%
<b>Contracts Written</b>		<b>1,033</b>	<b>1,031</b>	<b>1,002</b>	<b>4,901</b>	<b>4,659</b>	<b>4,663</b>
Change from prior year		0.2%	2.9%	-3.8%	5.2%	-0.1%	0.3%
<b>Pending Contracts</b>		<b>1,417</b>	<b>1,319</b>	<b>1,263</b>	<b>N/A</b>	<b>N/A</b>	<b>N/A</b>
Change from prior year		7.4%	4.4%	-9.3%			
<b>Sales Volume (1,000s)</b>		<b>306,069</b>	<b>307,654</b>	<b>271,115</b>	<b>1,144,664</b>	<b>1,075,632</b>	<b>1,011,111</b>
Change from prior year		-0.5%	13.5%	4.6%	6.4%	6.4%	8.4%
Average	<b>Sale Price</b>	<b>279,006</b>	<b>268,459</b>	<b>256,252</b>	<b>264,540</b>	<b>257,883</b>	<b>243,876</b>
	Change from prior year	3.9%	4.8%	6.8%	2.6%	5.7%	7.0%
	<b>List Price of Actives</b>	<b>337,130</b>	<b>346,255</b>	<b>354,605</b>	<b>N/A</b>	<b>N/A</b>	<b>N/A</b>
	Change from prior year	-2.6%	-2.4%	-0.2%			
	<b>Days on Market</b>	<b>37</b>	<b>29</b>	<b>35</b>	<b>43</b>	<b>37</b>	<b>38</b>
Change from prior year	27.6%	-17.1%	20.7%	16.2%	-2.6%	15.2%	
	<b>Percent of List</b>	<b>99.3%</b>	<b>99.3%</b>	<b>99.7%</b>	<b>98.6%</b>	<b>98.7%</b>	<b>99.0%</b>
Change from prior year	0.0%	-0.4%	-0.7%	-0.1%	-0.3%	-0.3%	
	<b>Percent of Original</b>	<b>97.9%</b>	<b>98.2%</b>	<b>98.5%</b>	<b>96.8%</b>	<b>97.2%</b>	<b>97.4%</b>
Change from prior year	-0.3%	-0.3%	-0.8%	-0.4%	-0.2%	-0.6%	
Median	<b>Sale Price</b>	<b>250,000</b>	<b>240,000</b>	<b>214,500</b>	<b>236,000</b>	<b>230,000</b>	<b>210,000</b>
	Change from prior year	4.2%	11.9%	3.1%	2.6%	9.5%	9.4%
	<b>List Price of Actives</b>	<b>260,000</b>	<b>297,745</b>	<b>302,500</b>	<b>N/A</b>	<b>N/A</b>	<b>N/A</b>
	Change from prior year	-12.7%	-1.6%	1.2%			
	<b>Days on Market</b>	<b>9</b>	<b>8</b>	<b>8</b>	<b>17</b>	<b>13</b>	<b>12</b>
Change from prior year	12.5%	0.0%	33.3%	30.8%	8.3%	33.3%	
	<b>Percent of List</b>	<b>100.0%</b>	<b>100.0%</b>	<b>100.0%</b>	<b>100.0%</b>	<b>100.0%</b>	<b>100.0%</b>
Change from prior year	0.0%	0.0%	0.0%	0.0%	0.0%	0.0%	
	<b>Percent of Original</b>	<b>100.0%</b>	<b>100.0%</b>	<b>100.0%</b>	<b>98.9%</b>	<b>99.5%</b>	<b>100.0%</b>
Change from prior year	0.0%	0.0%	0.0%	-0.6%	-0.5%	0.0%	

Note: Year-to-date statistics cannot be calculated for Active Listings, Months' Supply and Pending Contracts.



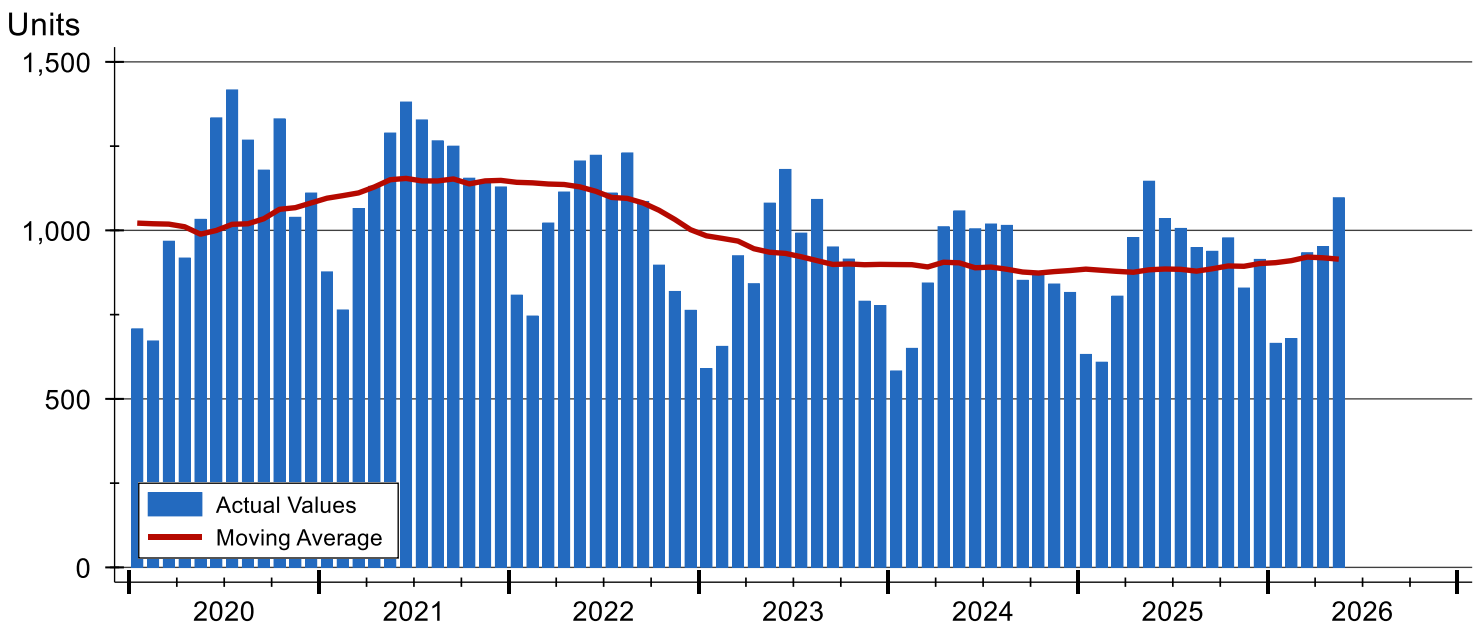
# Entire MLS System Closed Listings Analysis

Summary Statistics for Closed Listings		2026	May 2025	Change	2026	Year-to-Date 2025	Change
Closed Listings		1,097	1,146	-4.3%	4,327	4,171	3.7%
Volume (1,000s)		306,069	307,654	-0.5%	1,144,664	1,075,632	6.4%
Months' Supply		2.3	2.3	0.0%	N/A	N/A	N/A
Average	Sale Price	279,006	268,459	3.9%	264,540	257,883	2.6%
	Days on Market	37	29	27.6%	43	37	16.2%
	Percent of List	99.3%	99.3%	0.0%	98.6%	98.7%	-0.1%
	Percent of Original	97.9%	98.2%	-0.3%	96.8%	97.2%	-0.4%
Median	Sale Price	250,000	240,000	4.2%	236,000	230,000	2.6%
	Days on Market	9	8	12.5%	17	13	30.8%
	Percent of List	100.0%	100.0%	0.0%	100.0%	100.0%	0.0%
	Percent of Original	100.0%	100.0%	0.0%	98.9%	99.5%	-0.6%

A total of 1,097 homes sold in South Central Kansas in May, down from 1,146 units in May 2025. Total sales volume fell to \$306.1 million compared to \$307.7 million in the previous year.

The median sales price in May was \$250,000, up 4.2% compared to the prior year. Median days on market was 9 days, down from 11 days in April, but up from 8 in May 2025.

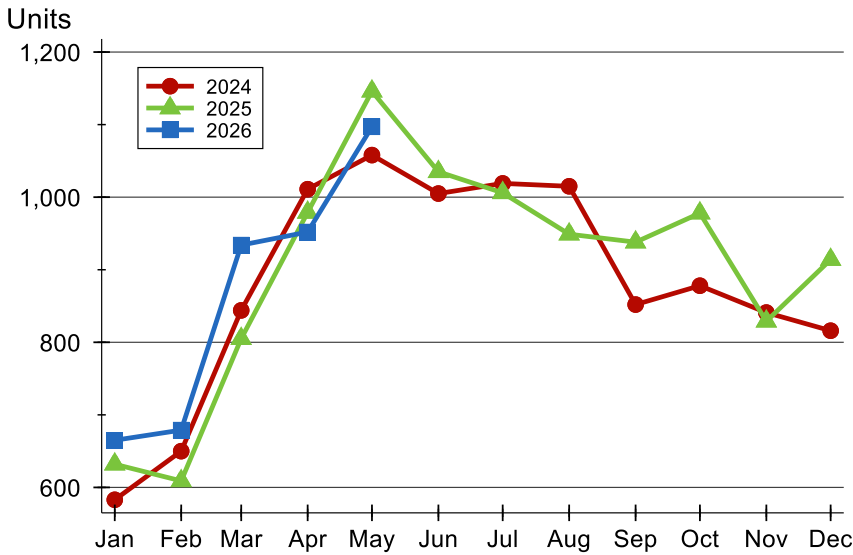
## History of Closed Listings





# Entire MLS System Closed Listings Analysis

## Closed Listings by Month



Month	2024	2025	2026
January	583	632	665
February	650	609	679
March	844	805	934
April	1,011	979	952
May	1,058	1,146	1,097
June	1,005	1,035	
July	1,019	1,006	
August	1,015	949	
September	852	938	
October	878	978	
November	841	829	
December	816	914	

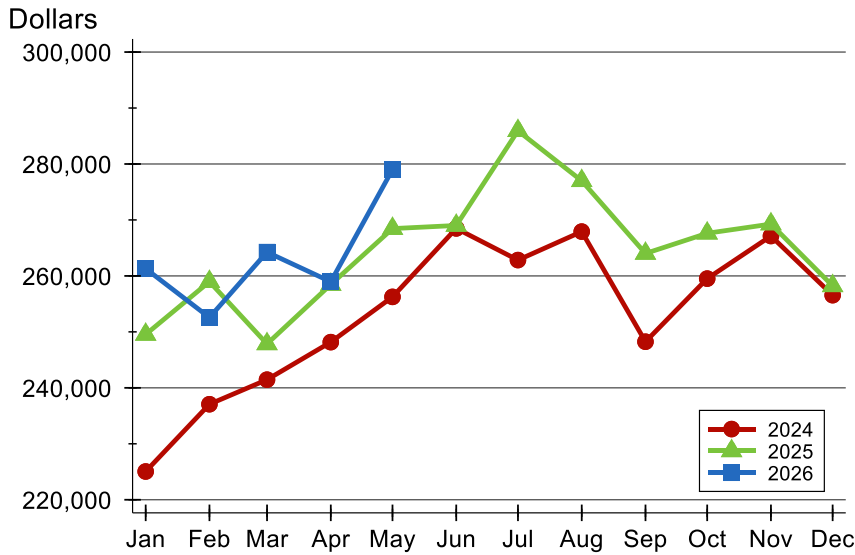
## Closed Listings by Price Range

Price Range	Sales		Months' Supply	Sale Price		Days on Market		Price as % of List		Price as % of Orig.	
	Number	Percent		Average	Median	Avg.	Med.	Avg.	Med.	Avg.	Med.
Below \$25,000	2	0.2%	1.1	19,500	19,500	21	21	100.0%	100.0%	100.0%	100.0%
\$25,000-\$49,999	10	0.9%	1.2	34,985	35,175	105	38	92.3%	85.0%	79.8%	83.3%
\$50,000-\$99,999	61	5.6%	1.8	80,073	82,500	49	28	96.1%	98.5%	90.8%	93.8%
\$100,000-\$124,999	47	4.3%	1.7	112,586	115,000	34	19	96.8%	100.0%	93.4%	96.2%
\$125,000-\$149,999	77	7.0%	1.8	137,735	139,000	27	9	98.8%	100.0%	97.5%	98.5%
\$150,000-\$174,999	91	8.3%	1.4	162,642	165,000	31	9	99.8%	100.0%	98.1%	99.9%
\$175,000-\$199,999	95	8.7%	3.3	185,371	185,000	37	8	100.0%	100.0%	98.9%	100.0%
\$200,000-\$249,999	162	14.8%	2.2	223,440	222,250	28	6	100.2%	100.0%	99.5%	100.0%
\$250,000-\$299,999	182	16.6%	2.0	273,617	273,620	24	6	100.4%	100.0%	99.7%	100.0%
\$300,000-\$399,999	209	19.1%	1.8	342,304	335,000	39	10	99.4%	100.0%	98.1%	100.0%
\$400,000-\$499,999	72	6.6%	3.1	445,146	440,000	52	11	99.0%	99.1%	97.6%	98.9%
\$500,000-\$749,999	66	6.0%	4.2	583,699	579,000	60	17	99.3%	99.2%	98.7%	98.3%
\$750,000-\$999,999	14	1.3%	6.2	862,835	848,500	55	9	96.9%	98.4%	94.9%	98.3%
\$1,000,000 and up	9	0.8%	7.1	1,366,333	1,225,000	78	86	95.9%	97.7%	93.3%	97.7%



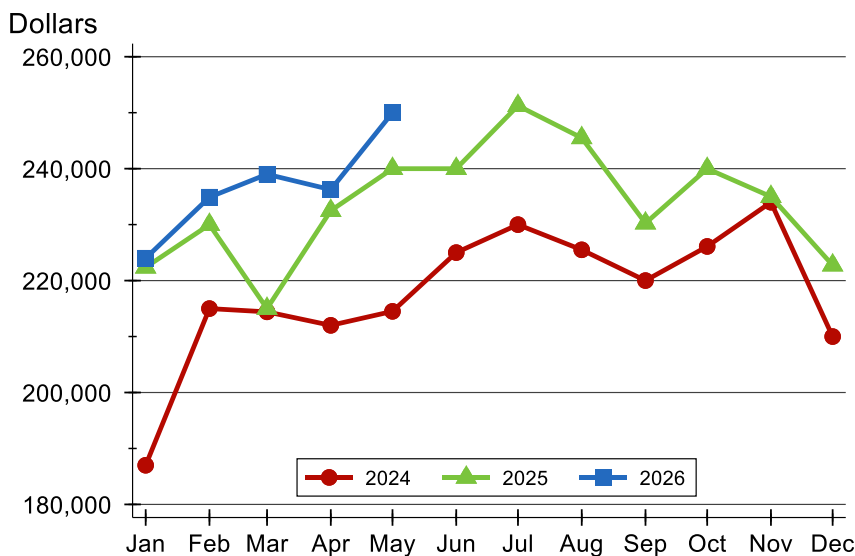
# Entire MLS System Closed Listings Analysis

## Average Price



Month	2024	2025	2026
January	225,055	249,539	<b>261,297</b>
February	237,071	258,976	<b>252,567</b>
March	241,461	247,850	<b>264,255</b>
April	248,170	258,462	<b>258,955</b>
May	256,252	268,459	<b>279,006</b>
June	268,492	269,015	
July	262,831	285,937	
August	267,921	277,002	
September	248,246	264,009	
October	259,518	267,625	
November	267,130	269,263	
December	256,560	258,221	

## Median Price

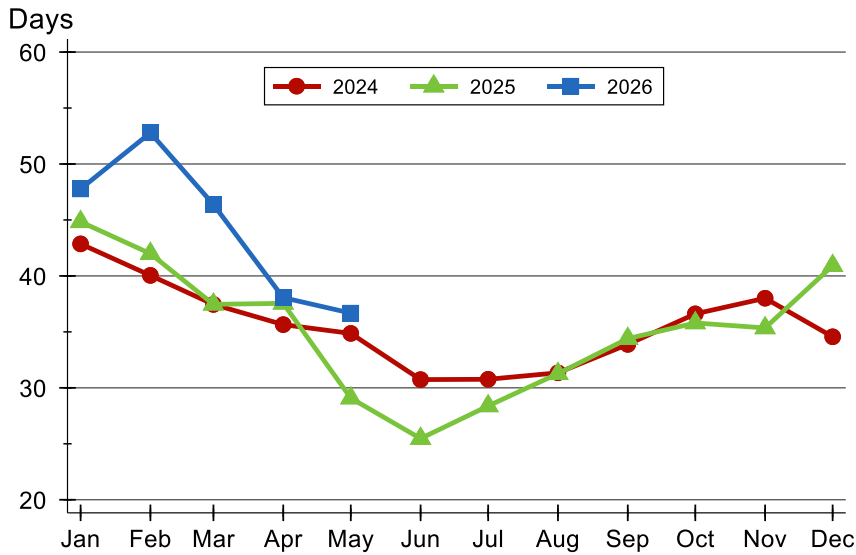


Month	2024	2025	2026
January	187,000	222,375	<b>224,000</b>
February	215,000	230,000	<b>234,900</b>
March	214,410	215,000	<b>239,000</b>
April	212,000	232,500	<b>236,250</b>
May	214,500	240,000	<b>250,000</b>
June	225,000	240,000	
July	230,000	251,250	
August	225,500	245,500	
September	220,000	230,250	
October	226,100	240,000	
November	234,000	235,000	
December	210,000	222,750	



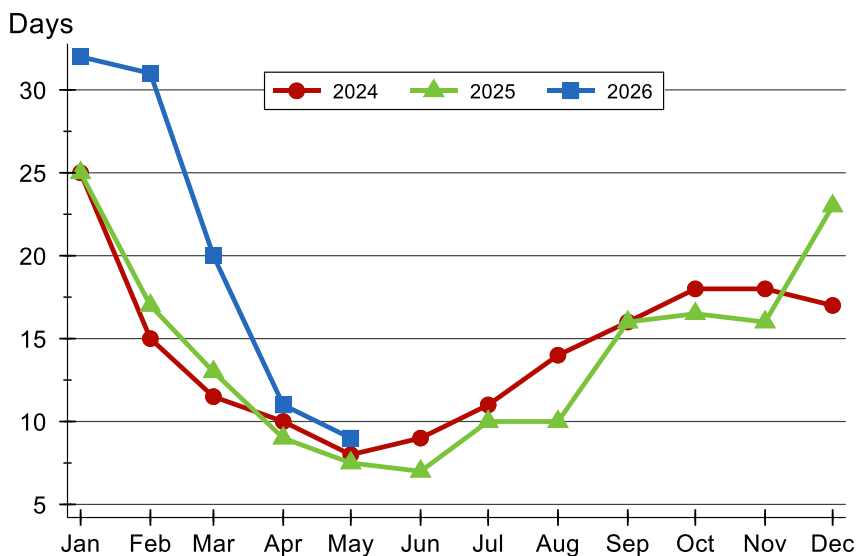
# Entire MLS System Closed Listings Analysis

## Average DOM



Month	2024	2025	2026
January	43	45	<b>48</b>
February	40	42	<b>53</b>
March	37	37	<b>46</b>
April	36	38	<b>38</b>
May	35	29	<b>37</b>
June	31	25	
July	31	28	
August	31	31	
September	34	34	
October	37	36	
November	38	35	
December	35	41	

## Median DOM



Month	2024	2025	2026
January	25	25	<b>32</b>
February	15	17	<b>31</b>
March	12	13	<b>20</b>
April	10	9	<b>11</b>
May	8	8	<b>9</b>
June	9	7	
July	11	10	
August	14	10	
September	16	16	
October	18	17	
November	18	16	
December	17	23	



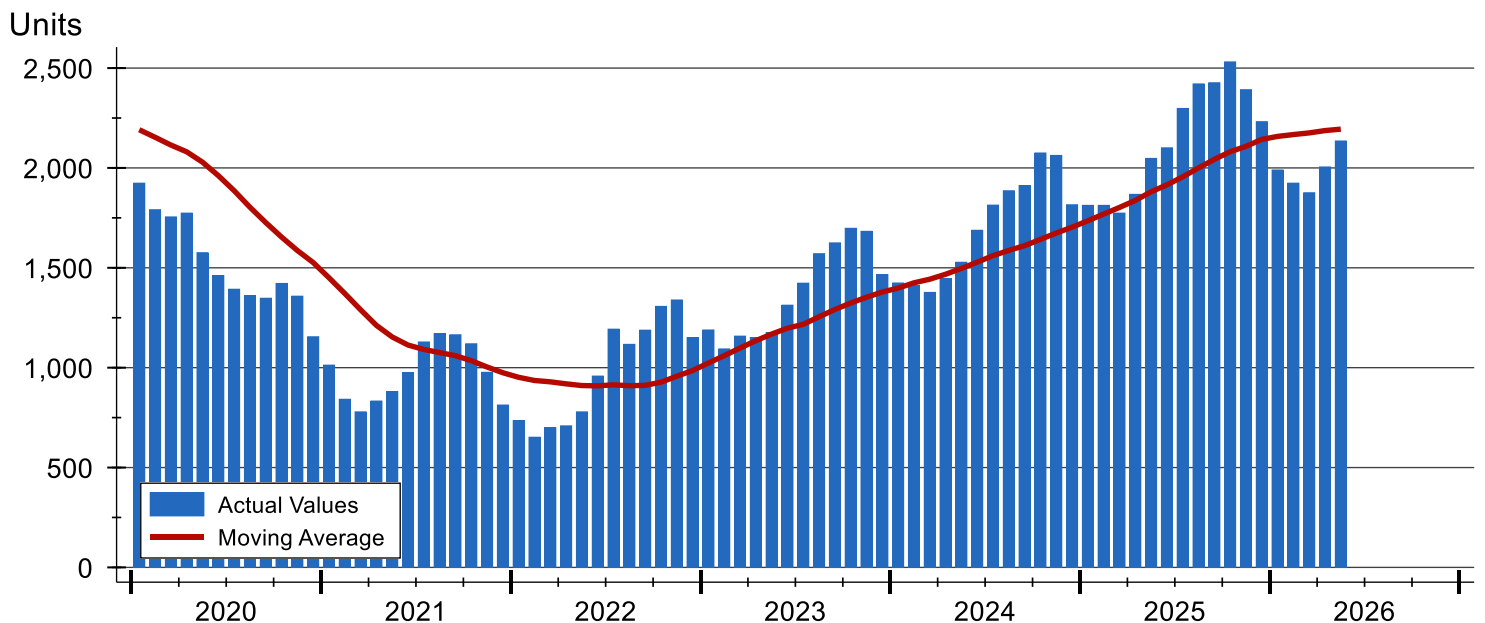
# Entire MLS System Active Listings Analysis

Summary Statistics for Active Listings		2026	End of May 2025	Change
Active Listings		2,135	2,048	4.2%
Volume (1,000s)		719,773	709,130	1.5%
Months' Supply		2.3	2.3	0.0%
Average	List Price	337,130	346,255	-2.6%
	Days on Market	52	66	-21.2%
	Percent of Original	98.1%	98.1%	0.0%
Median	List Price	260,000	297,745	-12.7%
	Days on Market	15	31	-51.6%
	Percent of Original	100.0%	100.0%	0.0%

A total of 2,135 homes were available for sale in South Central Kansas at the end of May. This represents a 2.3 months' supply of active listings.

The median list price of homes on the market at the end of May was \$260,000, down 12.7% from 2025. The typical time on market for active listings was 15 days, down from 31 days a year earlier.

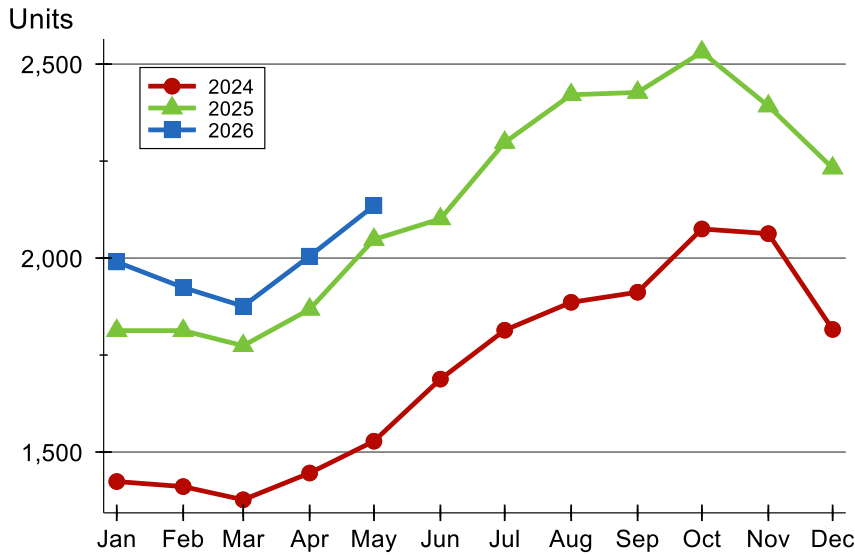
## History of Active Listings





# Entire MLS System Active Listings Analysis

## Active Listings by Month



Month	2024	2025	2026
January	1,424	1,813	1,990
February	1,411	1,813	1,924
March	1,377	1,774	1,876
April	1,446	1,868	2,005
May	1,528	2,048	2,135
June	1,688	2,101	
July	1,814	2,298	
August	1,886	2,421	
September	1,912	2,427	
October	2,075	2,531	
November	2,063	2,392	
December	1,816	2,232	

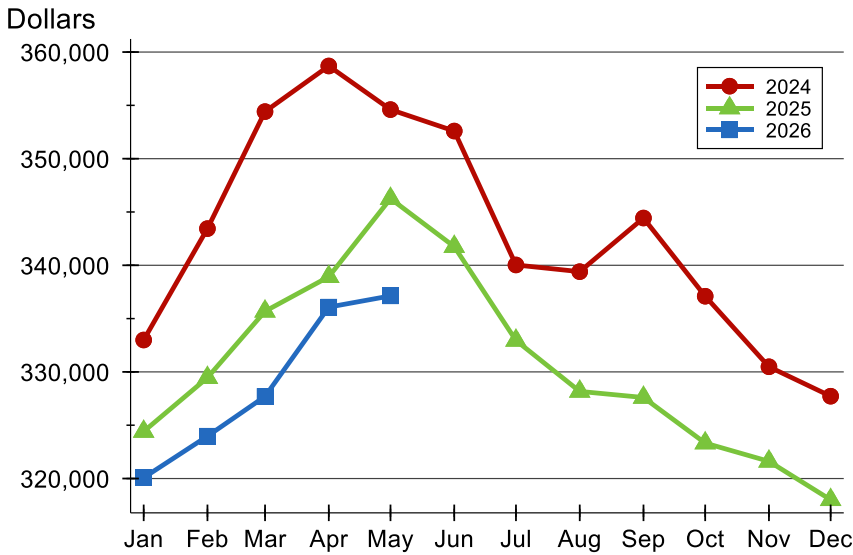
## Active Listings by Price Range

Price Range	Active Listings		Months' Supply	List Price		Days on Market		Price as % of Orig.	
	Number	Percent		Average	Median	Avg.	Med.	Avg.	Med.
Below \$25,000	6	0.3%	1.1	20,583	20,500	81	65	85.6%	82.5%
\$25,000-\$49,999	19	0.9%	1.2	40,113	40,000	42	18	87.5%	94.2%
\$50,000-\$99,999	128	6.1%	1.8	78,367	79,500	41	18	95.3%	100.0%
\$100,000-\$124,999	78	3.7%	1.7	113,523	115,000	37	18	96.0%	100.0%
\$125,000-\$149,999	121	5.8%	1.8	136,212	135,000	40	20	96.8%	100.0%
\$150,000-\$174,999	106	5.1%	1.4	163,140	164,450	36	10	97.8%	100.0%
\$175,000-\$199,999	251	12.0%	3.3	187,166	189,500	47	7	98.5%	100.0%
\$200,000-\$249,999	292	14.0%	2.2	227,250	229,900	48	12	98.7%	100.0%
\$250,000-\$299,999	274	13.1%	2.0	277,684	277,990	32	9	98.7%	100.0%
\$300,000-\$399,999	281	13.5%	1.8	350,850	349,900	65	21	98.6%	100.0%
\$400,000-\$499,999	195	9.3%	3.1	450,977	450,000	79	19	99.4%	100.0%
\$500,000-\$749,999	216	10.4%	4.2	593,780	586,906	82	32	98.1%	100.0%
\$750,000-\$999,999	66	3.2%	6.2	859,487	845,000	54	21	98.9%	100.0%
\$1,000,000 and up	53	2.5%	7.1	1,674,985	1,449,000	50	12	99.0%	100.0%



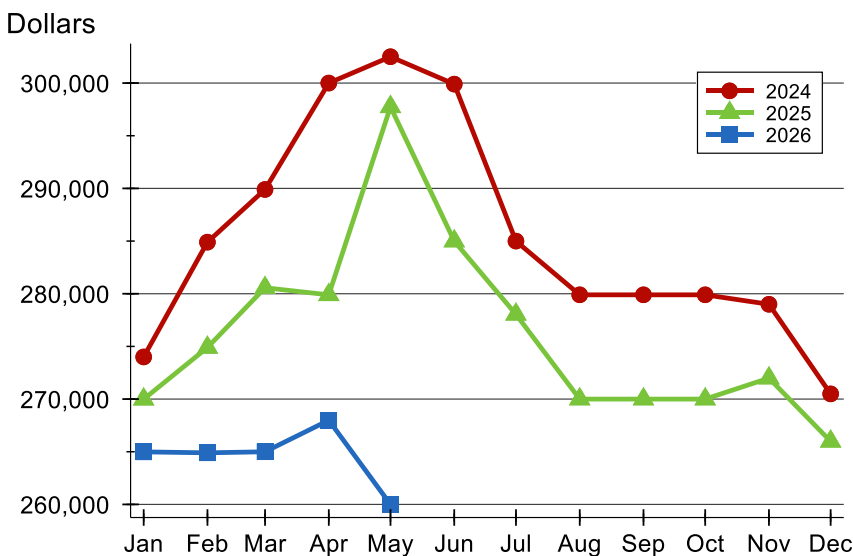
# Entire MLS System Active Listings Analysis

## Average Price



Month	2024	2025	2026
January	332,993	324,413	<b>320,077</b>
February	343,440	329,460	<b>323,973</b>
March	354,415	335,685	<b>327,699</b>
April	358,695	338,928	<b>336,077</b>
May	354,605	346,255	<b>337,130</b>
June	352,593	341,753	
July	340,031	332,956	
August	339,404	328,174	
September	344,433	327,599	
October	337,101	323,326	
November	330,482	321,613	
December	327,721	318,008	

## Median Price

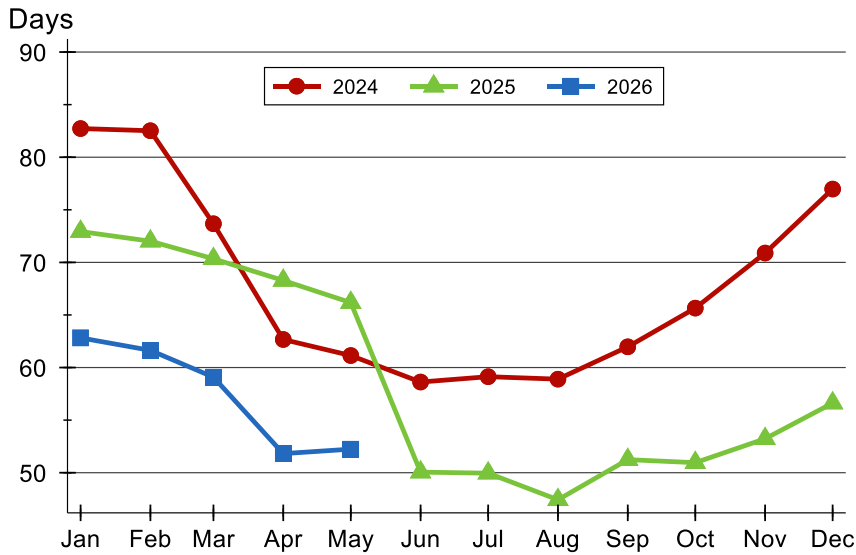


Month	2024	2025	2026
January	274,000	269,990	<b>264,990</b>
February	284,900	274,900	<b>264,900</b>
March	289,900	280,571	<b>265,000</b>
April	300,000	279,900	<b>267,990</b>
May	302,500	297,745	<b>260,000</b>
June	299,900	285,000	
July	285,000	278,045	
August	279,900	270,000	
September	279,900	270,000	
October	279,900	270,000	
November	279,000	271,990	
December	270,495	265,990	



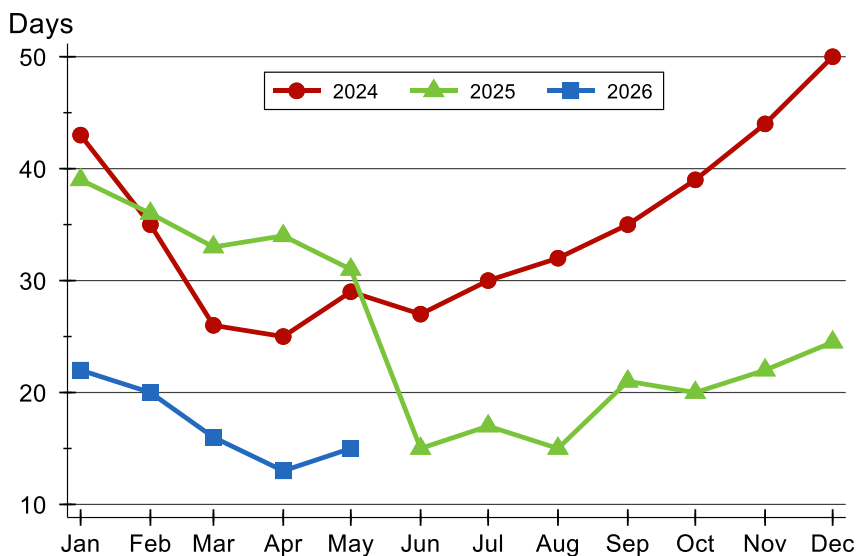
# Entire MLS System Active Listings Analysis

## Average DOM



Month	2024	2025	2026
January	83	73	<b>63</b>
February	83	72	<b>62</b>
March	74	70	<b>59</b>
April	63	68	<b>52</b>
May	61	66	<b>52</b>
June	59	50	
July	59	50	
August	59	47	
September	62	51	
October	66	51	
November	71	53	
December	77	57	

## Median DOM

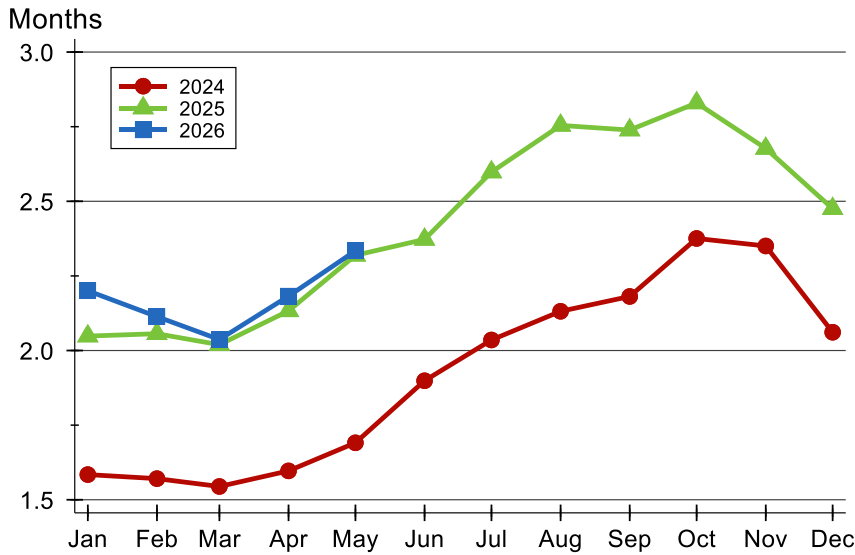


Month	2024	2025	2026
January	43	39	<b>22</b>
February	35	36	<b>20</b>
March	26	33	<b>16</b>
April	25	34	<b>13</b>
May	29	31	<b>15</b>
June	27	15	
July	30	17	
August	32	15	
September	35	21	
October	39	20	
November	44	22	
December	50	25	



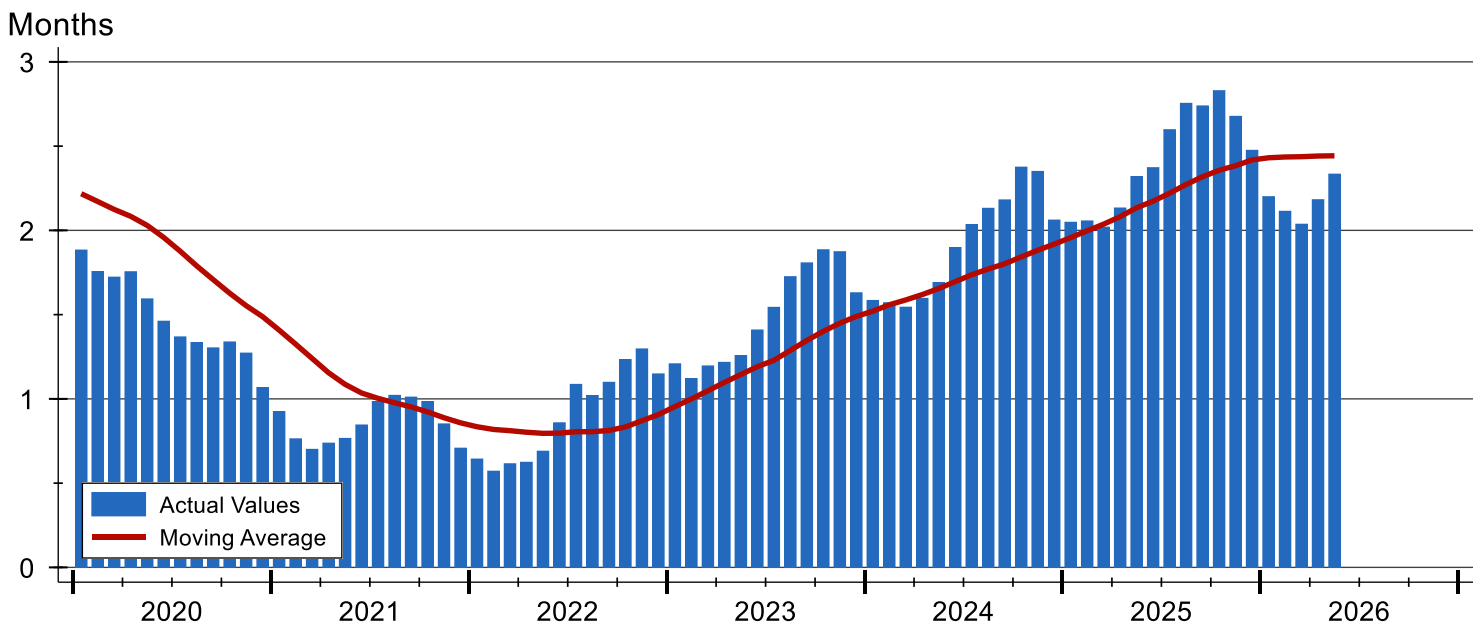
# Entire MLS System Months' Supply Analysis

## Months' Supply by Month



Month	2024	2025	2026
January	1.6	2.0	<b>2.2</b>
February	1.6	2.1	<b>2.1</b>
March	1.5	2.0	<b>2.0</b>
April	1.6	2.1	<b>2.2</b>
May	1.7	2.3	<b>2.3</b>
June	1.9	2.4	
July	2.0	2.6	
August	2.1	2.8	
September	2.2	2.7	
October	2.4	2.8	
November	2.4	2.7	
December	2.1	2.5	

## History of Month's Supply





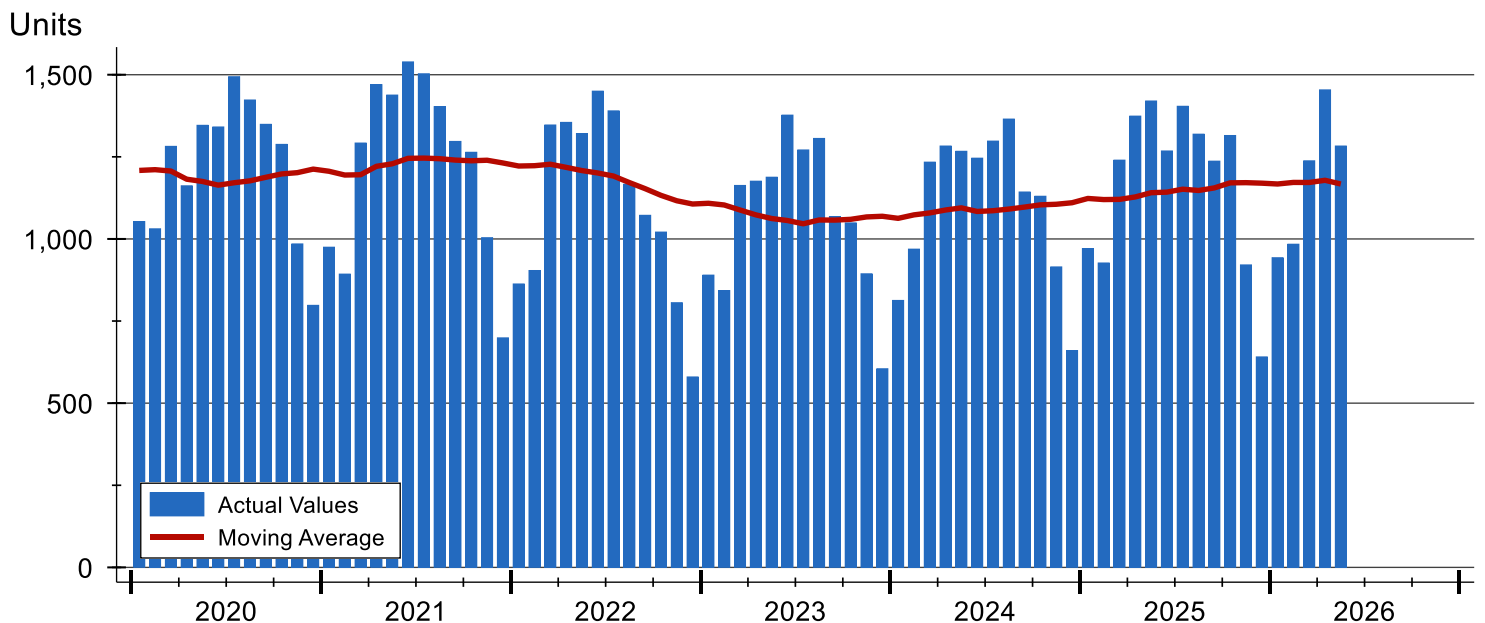
# Entire MLS System New Listings Analysis

Summary Statistics for New Listings		2026	May 2025	Change
Current Month	New Listings	<b>1,283</b>	1,420	-9.6%
	Volume (1,000s)	<b>388,631</b>	417,287	-6.9%
	Average List Price	<b>302,908</b>	293,864	3.1%
	Median List Price	<b>244,900</b>	259,900	-5.8%
Year-to-Date	New Listings	<b>5,902</b>	5,932	-0.5%
	Volume (1,000s)	<b>1,688,731</b>	1,648,456	2.4%
	Average List Price	<b>286,129</b>	277,892	3.0%
	Median List Price	<b>240,000</b>	240,000	0.0%

A total of 1,283 new listings were added in South Central Kansas during May, down 9.6% from the same month in 2025. Year-to-date South Central Kansas has seen 5,902 new listings.

The median list price of these homes was \$244,900 down from \$259,900 in 2025.

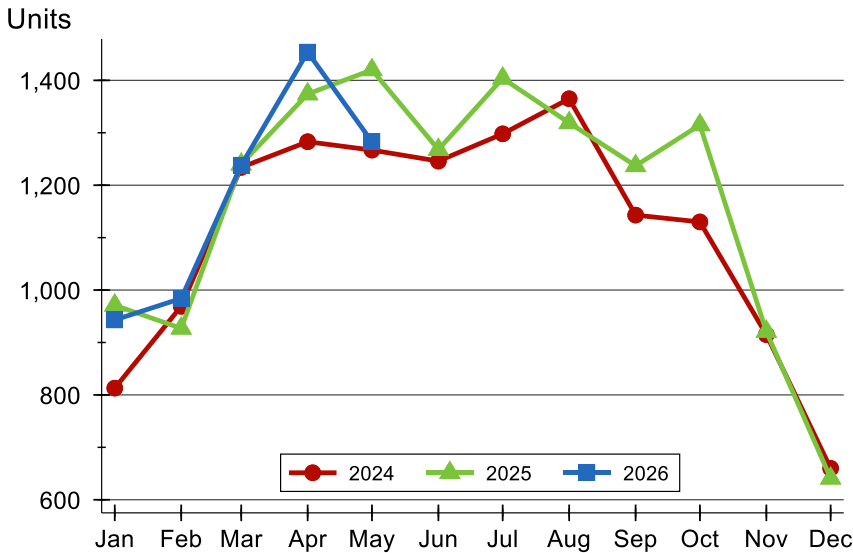
## History of New Listings





# Entire MLS System New Listings Analysis

## New Listings by Month



Month	2024	2025	2026
January	813	971	943
February	969	927	984
March	1,234	1,240	1,238
April	1,283	1,374	1,454
May	1,267	1,420	1,283
June	1,246	1,268	
July	1,298	1,404	
August	1,365	1,319	
September	1,143	1,237	
October	1,130	1,315	
November	915	921	
December	660	641	

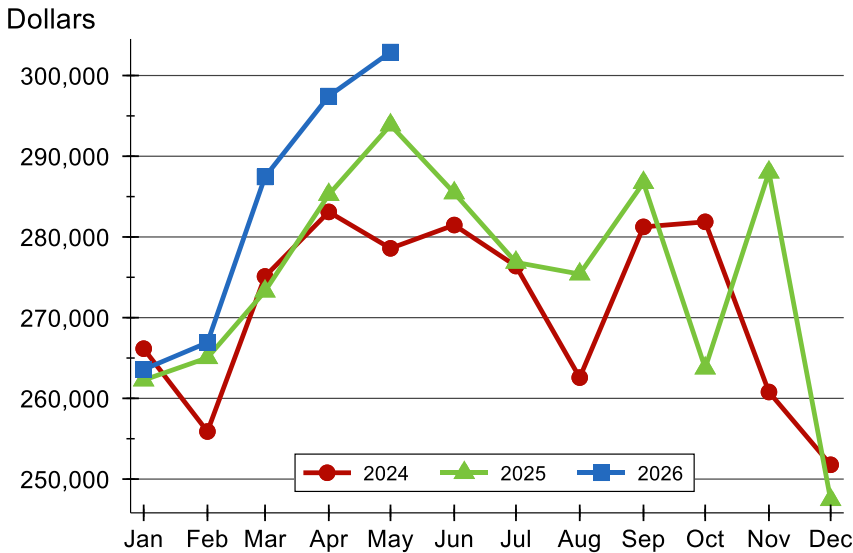
## New Listings by Price Range

Price Range	New Listings		List Price		Days on Market		Price as % of Orig.	
	Number	Percent	Average	Median	Avg.	Med.	Avg.	Med.
Below \$25,000	3	0.2%	18,000	22,000	19	19	80.0%	100.0%
\$25,000-\$49,999	12	1.0%	37,775	39,925	6	5	99.3%	100.0%
\$50,000-\$99,999	71	5.7%	81,567	81,500	7	5	99.5%	100.0%
\$100,000-\$124,999	46	3.7%	113,054	115,000	8	5	98.7%	100.0%
\$125,000-\$149,999	89	7.2%	137,052	135,000	8	5	99.5%	100.0%
\$150,000-\$174,999	89	7.2%	161,853	160,000	8	4	99.8%	100.0%
\$175,000-\$199,999	130	10.5%	188,172	189,250	6	4	99.7%	100.0%
\$200,000-\$249,999	214	17.2%	227,461	227,500	6	3	99.5%	100.0%
\$250,000-\$299,999	186	15.0%	275,611	275,000	7	5	99.5%	100.0%
\$300,000-\$399,999	189	15.2%	347,484	340,000	7	5	99.8%	100.0%
\$400,000-\$499,999	87	7.0%	447,867	445,000	6	3	99.8%	100.0%
\$500,000-\$749,999	77	6.2%	591,206	585,000	7	4	99.7%	100.0%
\$750,000-\$999,999	28	2.3%	843,898	817,121	9	5	99.5%	100.0%
\$1,000,000 and up	22	1.8%	1,828,153	1,342,500	7	2	99.8%	100.0%



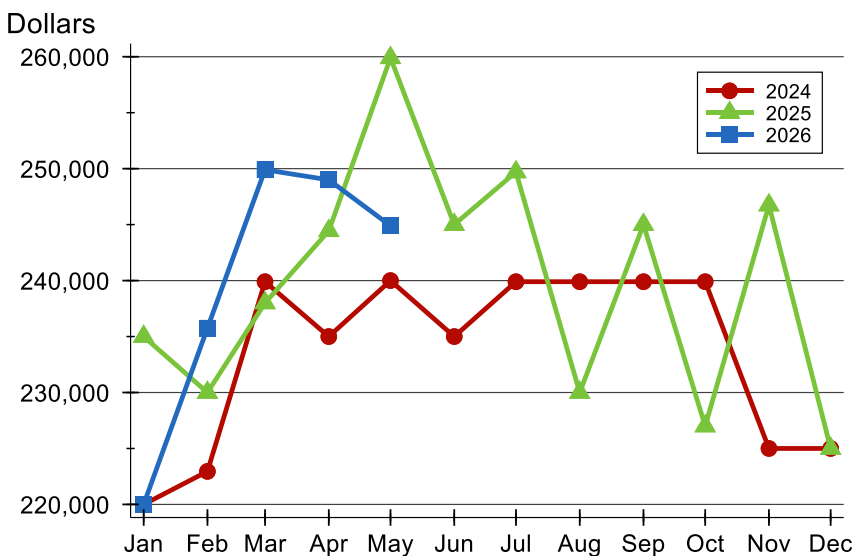
# Entire MLS System New Listings Analysis

## Average Price



Month	2024	2025	2026
January	266,158	262,261	<b>263,578</b>
February	255,896	265,027	<b>266,913</b>
March	275,108	273,278	<b>287,438</b>
April	283,106	285,247	<b>297,454</b>
May	278,589	293,864	<b>302,908</b>
June	281,477	285,445	
July	276,397	276,850	
August	262,574	275,401	
September	281,248	286,728	
October	281,873	263,742	
November	260,789	288,018	
December	251,773	247,438	

## Median Price



Month	2024	2025	2026
January	220,000	235,000	<b>220,000</b>
February	222,950	230,000	<b>235,750</b>
March	239,900	238,000	<b>249,900</b>
April	235,000	244,450	<b>249,000</b>
May	240,000	259,900	<b>244,900</b>
June	235,000	245,000	
July	239,900	249,700	
August	239,900	230,000	
September	239,900	245,000	
October	239,900	227,000	
November	225,000	246,745	
December	225,000	225,000	



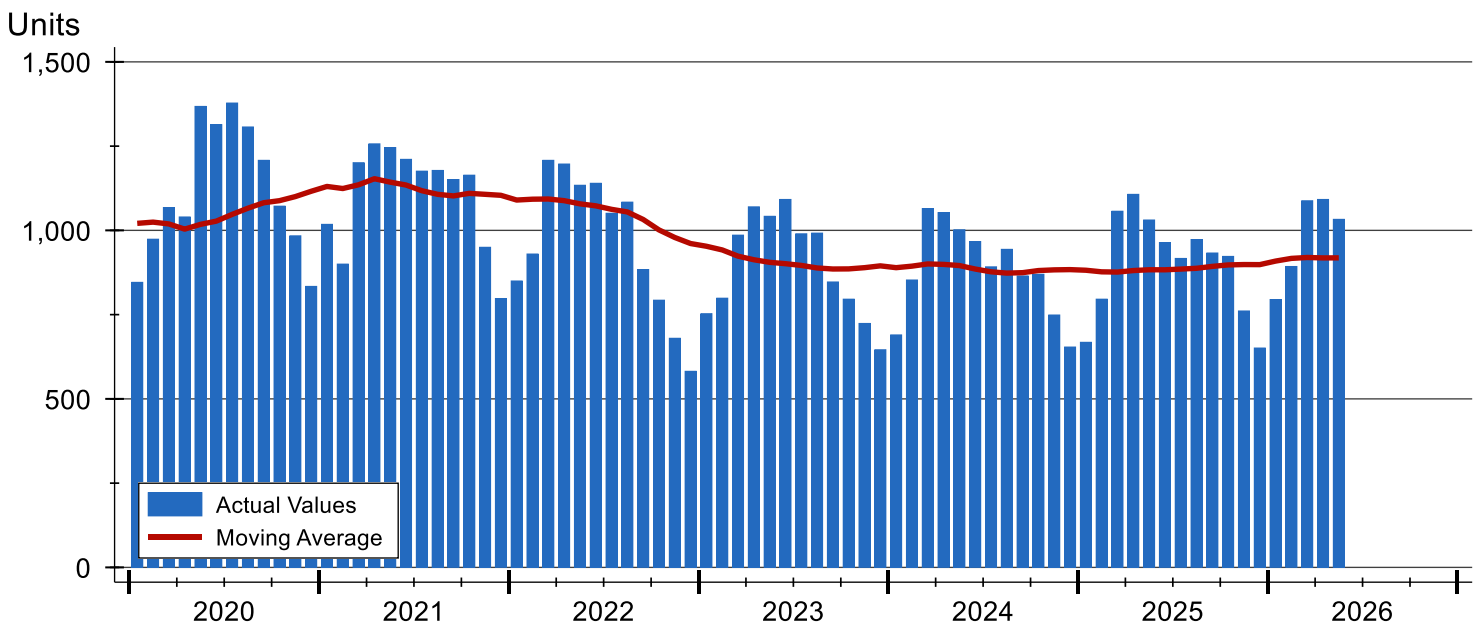
# Entire MLS System Contracts Written Analysis

Summary Statistics for Contracts Written		2026	May 2025	Change	Year-to-Date		
		2026	2025		2026	2025	Change
Contracts Written		1,033	1,031	0.2%	4,901	4,659	5.2%
Volume (1,000s)		283,776	276,840	2.5%	1,337,455	1,240,983	7.8%
Average	Sale Price	274,711	268,516	2.3%	272,894	266,363	2.5%
	Days on Market	38	27	40.7%	42	34	23.5%
	Percent of Original	98.4%	98.3%	0.1%	97.4%	97.7%	-0.3%
Median	Sale Price	240,000	240,000	0.0%	245,000	237,500	3.2%
	Days on Market	10	8	25.0%	13	9	44.4%
	Percent of Original	100.0%	100.0%	0.0%	100.0%	100.0%	0.0%

A total of 1,033 contracts for sale were written in South Central Kansas during the month of May, up from 1,031 in 2025. The median list price of these homes was \$240,000, the same as the prior year.

Half of the homes that went under contract in May were on the market less than 10 days, compared to 8 days in May 2025.

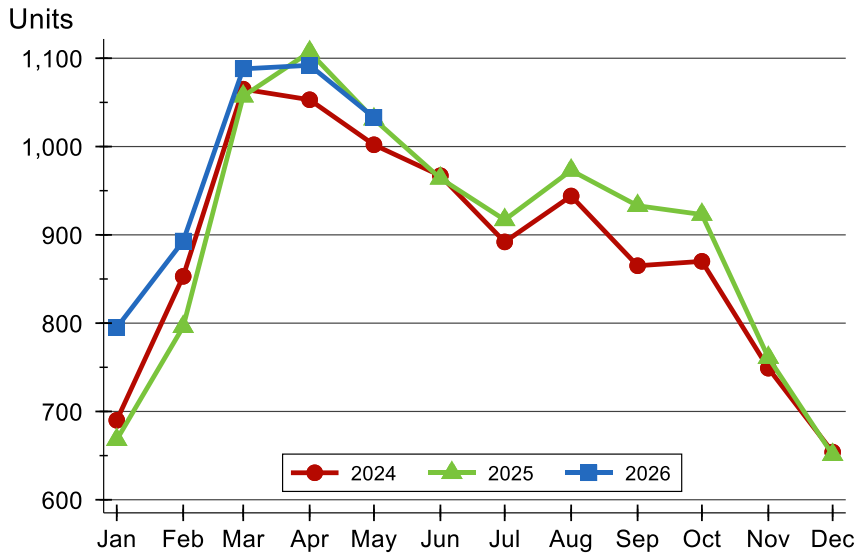
## History of Contracts Written





# Entire MLS System Contracts Written Analysis

## Contracts Written by Month



Month	2024	2025	2026
January	690	668	<b>795</b>
February	853	796	<b>893</b>
March	1,065	1,057	<b>1,088</b>
April	1,053	1,107	<b>1,092</b>
May	1,002	1,031	<b>1,033</b>
June	967	964	
July	892	917	
August	944	973	
September	865	933	
October	870	923	
November	749	761	
December	654	651	

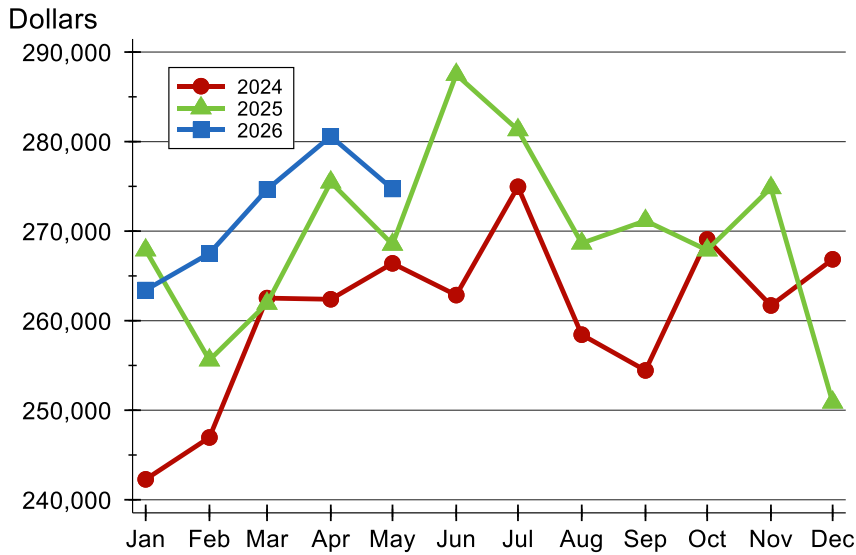
## Contracts Written by Price Range

Price Range	Contracts Written		List Price		Days on Market		Price as % of Orig.	
	Number	Percent	Average	Median	Avg.	Med.	Avg.	Med.
Below \$25,000	3	0.3%	15,000	13,000	16	19	80.0%	100.0%
\$25,000-\$49,999	7	0.7%	38,414	40,000	13	8	100.0%	100.0%
\$50,000-\$99,999	62	6.2%	80,204	83,000	51	21	95.7%	100.0%
\$100,000-\$124,999	48	4.8%	115,071	115,750	28	15	96.3%	100.0%
\$125,000-\$149,999	88	8.8%	137,075	135,000	23	10	97.8%	100.0%
\$150,000-\$174,999	76	7.6%	160,362	159,900	26	11	99.0%	100.0%
\$175,000-\$199,999	89	8.9%	186,867	187,500	31	7	98.4%	100.0%
\$200,000-\$249,999	153	15.3%	224,940	225,000	25	6	99.3%	100.0%
\$250,000-\$299,999	148	14.8%	274,600	275,000	26	7	99.1%	100.0%
\$300,000-\$399,999	183	18.4%	348,794	349,000	36	13	98.3%	100.0%
\$400,000-\$499,999	66	6.6%	445,431	439,900	147	10	99.6%	100.0%
\$500,000-\$749,999	53	5.3%	598,356	599,000	24	10	99.1%	100.0%
\$750,000-\$999,999	13	1.3%	867,574	875,000	69	13	97.6%	100.0%
\$1,000,000 and up	8	0.8%	1,365,000	1,175,000	29	19	95.1%	100.0%



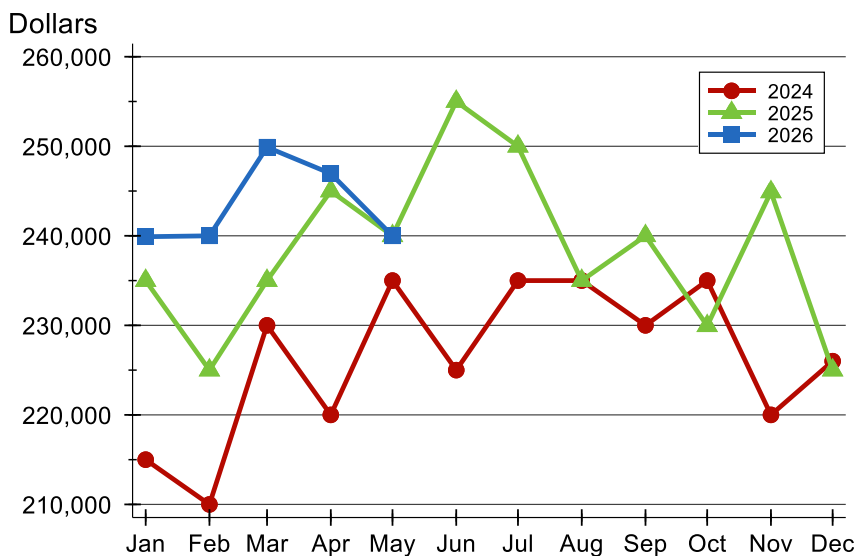
# Entire MLS System Contracts Written Analysis

## Average Price



Month	2024	2025	2026
January	242,281	267,886	<b>263,422</b>
February	246,956	255,597	<b>267,517</b>
March	262,523	261,922	<b>274,648</b>
April	262,391	275,468	<b>280,594</b>
May	266,403	268,516	<b>274,711</b>
June	262,856	287,489	
July	274,956	281,308	
August	258,439	268,648	
September	254,445	271,164	
October	269,073	267,878	
November	261,696	274,837	
December	266,854	250,883	

## Median Price

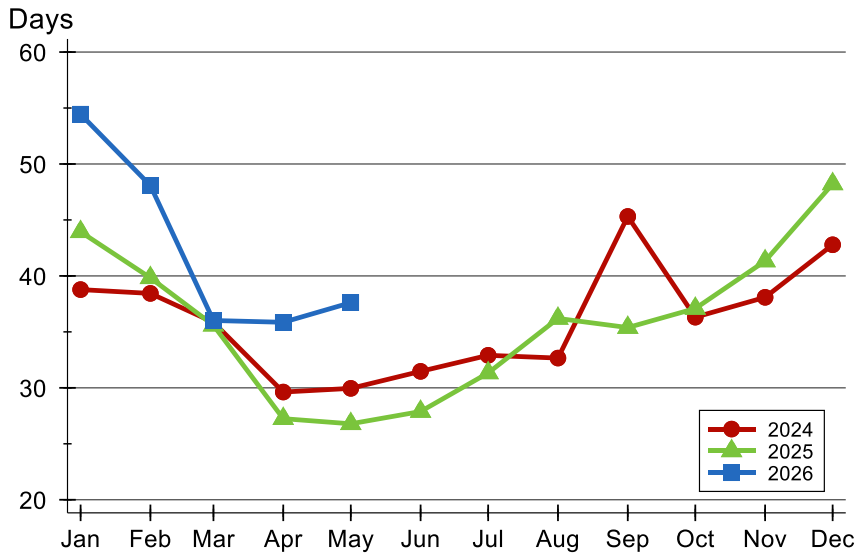


Month	2024	2025	2026
January	215,000	235,000	<b>239,900</b>
February	210,000	225,000	<b>240,000</b>
March	230,000	235,000	<b>249,900</b>
April	220,000	245,000	<b>246,950</b>
May	235,000	240,000	<b>240,000</b>
June	225,000	255,000	
July	235,000	250,000	
August	235,000	235,000	
September	230,000	240,000	
October	235,000	229,950	
November	220,000	244,900	
December	226,000	225,000	



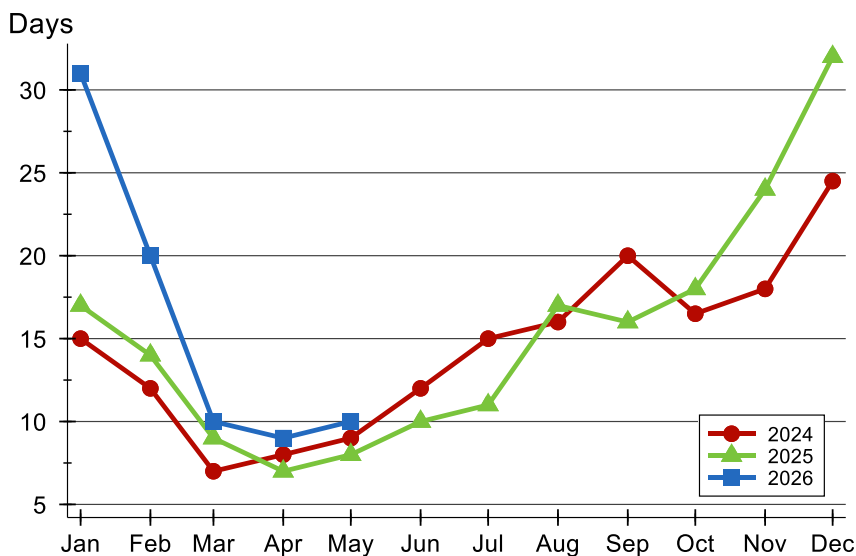
# Entire MLS System Contracts Written Analysis

## Average DOM



Month	2024	2025	2026
January	39	44	<b>54</b>
February	38	40	<b>48</b>
March	36	36	<b>36</b>
April	30	27	<b>36</b>
May	30	27	<b>38</b>
June	31	28	
July	33	31	
August	33	36	
September	45	35	
October	36	37	
November	38	41	
December	43	48	

## Median DOM



Month	2024	2025	2026
January	15	17	<b>31</b>
February	12	14	<b>20</b>
March	7	9	<b>10</b>
April	8	7	<b>9</b>
May	9	8	<b>10</b>
June	12	10	
July	15	11	
August	16	17	
September	20	16	
October	17	18	
November	18	24	
December	25	32	



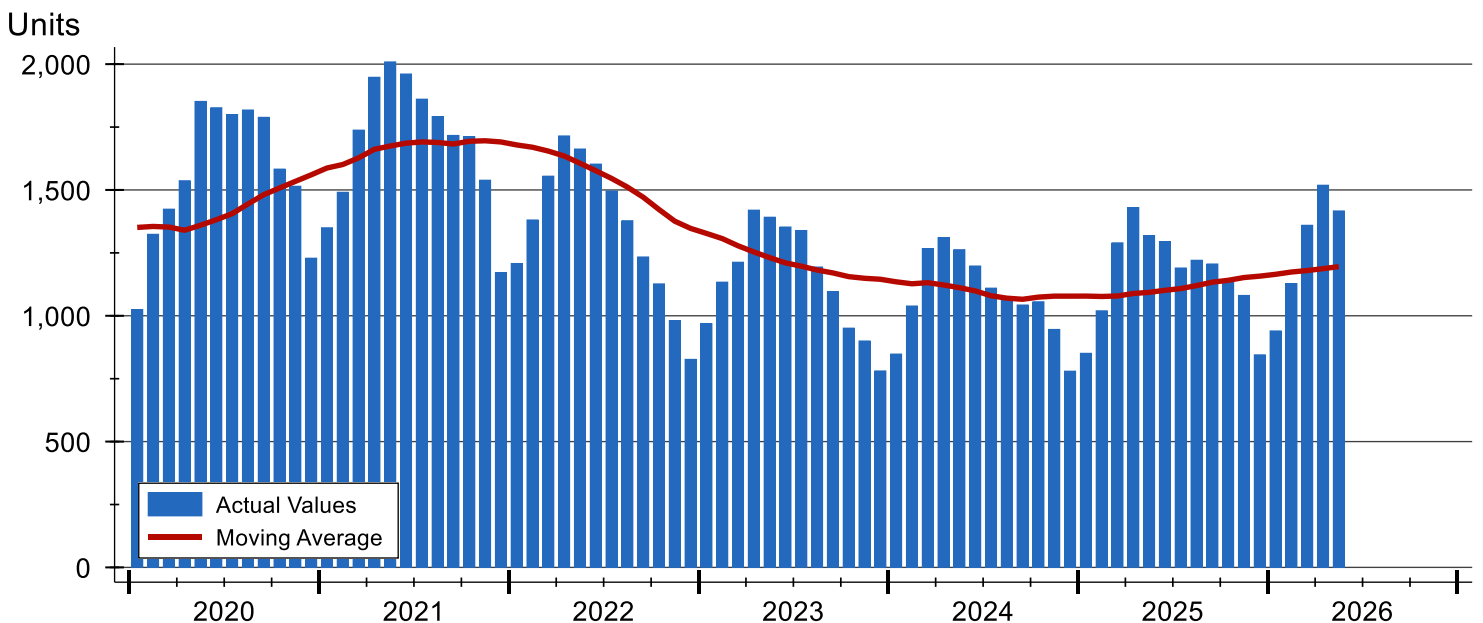
# Entire MLS System Pending Contracts Analysis

Summary Statistics for Pending Contracts		2026	End of May 2025	Change
Pending Contracts		1,417	1,319	7.4%
Volume (1,000s)		412,655	371,167	11.2%
Average	List Price	291,217	281,400	3.5%
	Days on Market	39	29	34.5%
	Percent of Original	98.5%	98.8%	-0.3%
Median	List Price	250,000	248,625	0.6%
	Days on Market	9	8	12.5%
	Percent of Original	100.0%	100.0%	0.0%

A total of 1,417 listings in South Central Kansas had contracts pending at the end of May, up from 1,319 contracts pending at the end of May 2025.

Pending contracts reflect listings with a contract in place at the end of the month. In contrast, contracts written measures the number of listings put under contract during the month.

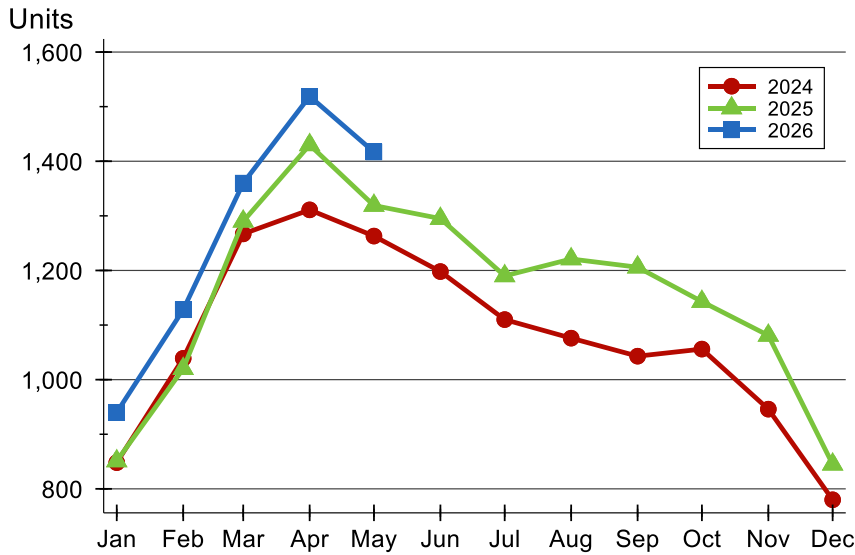
## History of Pending Contracts





# Entire MLS System Pending Contracts Analysis

## Pending Contracts by Month



Month	2024	2025	2026
January	848	851	940
February	1,039	1,020	1,128
March	1,267	1,290	1,360
April	1,311	1,430	1,519
May	1,263	1,319	1,417
June	1,198	1,295	
July	1,110	1,190	
August	1,076	1,221	
September	1,043	1,206	
October	1,056	1,143	
November	946	1,081	
December	780	845	

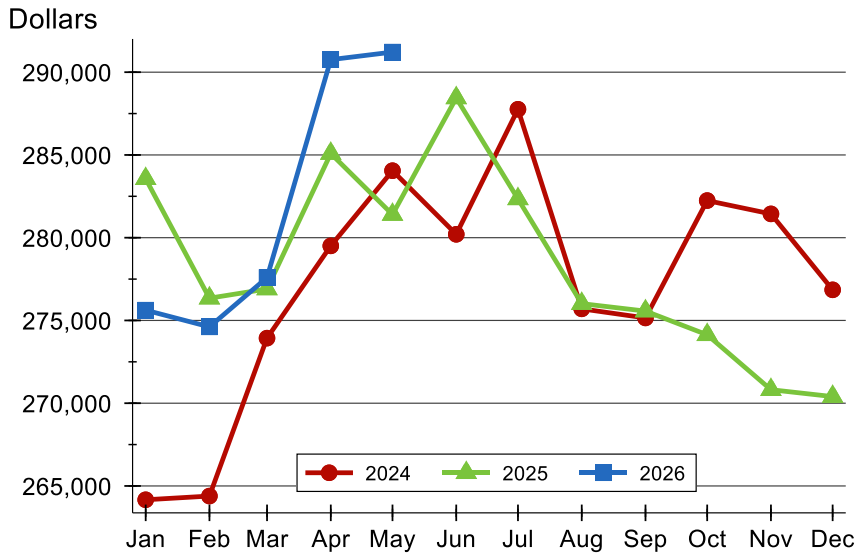
## Pending Contracts by Price Range

Price Range	Pending Contracts		List Price		Days on Market		Price as % of Orig.	
	Number	Percent	Average	Median	Avg.	Med.	Avg.	Med.
Below \$25,000	5	0.4%	15,500	15,000	23	19	70.7%	100.0%
\$25,000-\$49,999	9	0.7%	39,784	40,000	22	16	96.3%	100.0%
\$50,000-\$99,999	81	5.9%	78,112	79,500	74	21	94.6%	100.0%
\$100,000-\$124,999	58	4.2%	115,368	116,750	29	15	97.5%	100.0%
\$125,000-\$149,999	116	8.4%	136,872	135,000	29	10	97.9%	100.0%
\$150,000-\$174,999	94	6.8%	160,559	159,950	27	13	98.8%	100.0%
\$175,000-\$199,999	110	7.9%	186,852	188,750	36	7	98.4%	100.0%
\$200,000-\$249,999	209	15.1%	226,018	225,000	26	6	99.3%	100.0%
\$250,000-\$299,999	222	16.0%	276,599	275,000	30	7	99.2%	100.0%
\$300,000-\$399,999	254	18.4%	347,354	345,000	31	11	99.0%	100.0%
\$400,000-\$499,999	100	7.2%	446,916	444,450	107	6	99.5%	100.0%
\$500,000-\$749,999	82	5.9%	595,217	582,500	46	10	98.9%	100.0%
\$750,000-\$999,999	26	1.9%	852,473	825,000	50	3	100.0%	100.0%
\$1,000,000 and up	18	1.3%	1,418,489	1,260,703	21	6	97.8%	100.0%



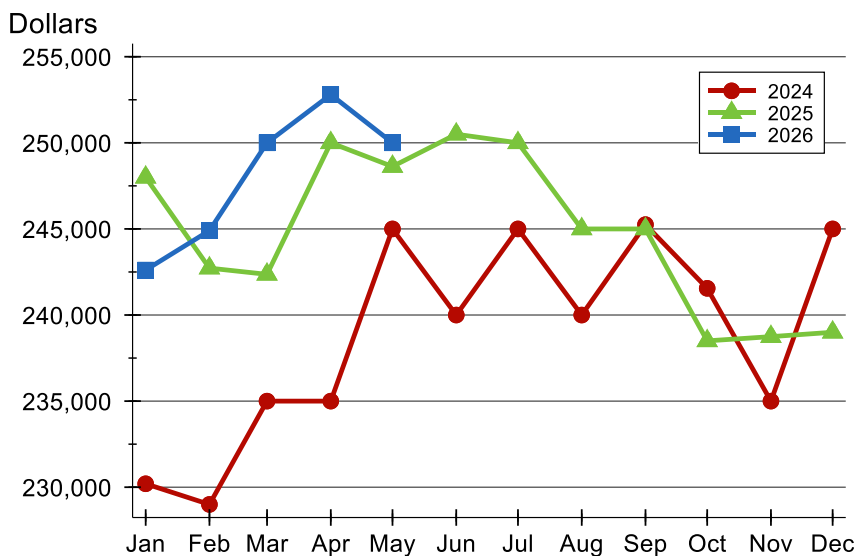
# Entire MLS System Pending Contracts Analysis

## Average Price



Month	2024	2025	2026
January	264,166	283,561	<b>275,624</b>
February	264,391	276,347	<b>274,613</b>
March	273,932	276,901	<b>277,591</b>
April	279,507	285,087	<b>290,758</b>
May	284,049	281,400	<b>291,217</b>
June	280,205	288,447	
July	287,761	282,346	
August	275,701	276,016	
September	275,154	275,567	
October	282,245	274,134	
November	281,440	270,818	
December	276,853	270,401	

## Median Price

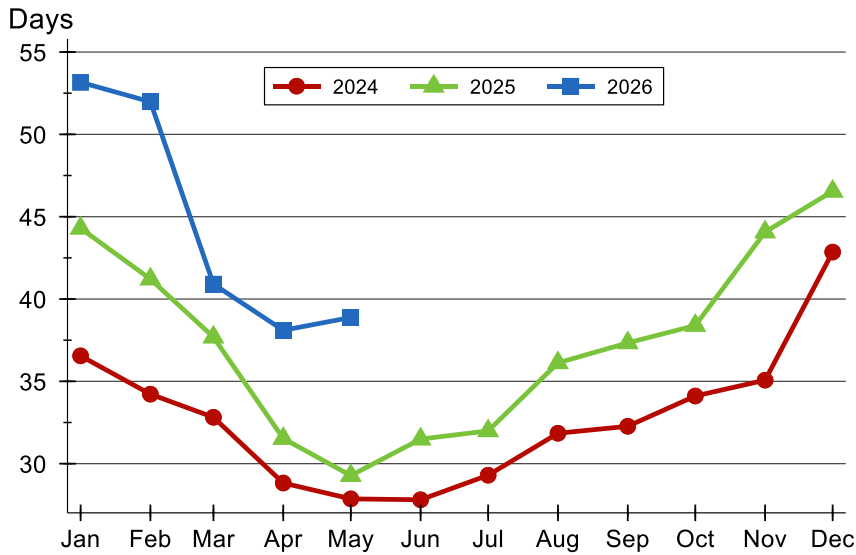


Month	2024	2025	2026
January	230,200	248,000	<b>242,613</b>
February	229,000	242,725	<b>244,900</b>
March	235,000	242,363	<b>250,000</b>
April	235,000	250,000	<b>252,800</b>
May	245,000	248,625	<b>250,000</b>
June	240,000	250,500	
July	245,000	250,000	
August	240,000	245,000	
September	245,250	245,000	
October	241,550	238,500	
November	235,000	238,745	
December	245,000	239,000	



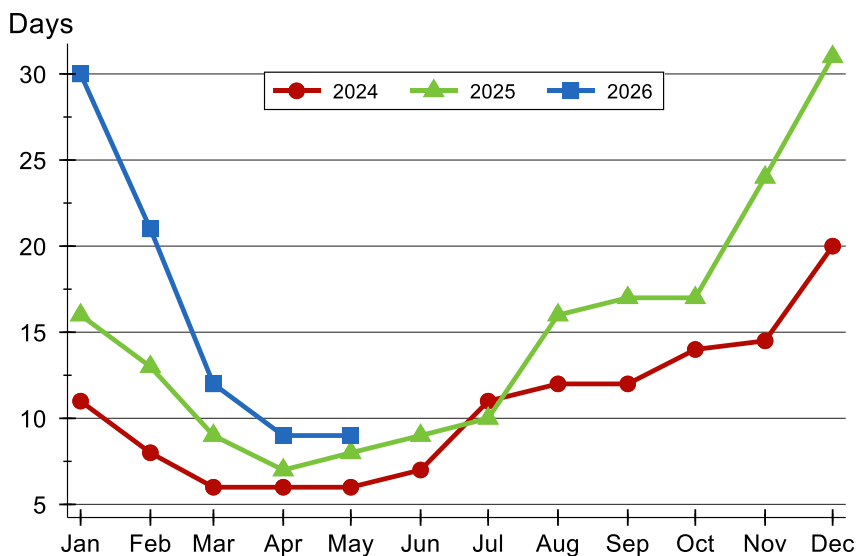
# Entire MLS System Pending Contracts Analysis

## Average DOM



Month	2024	2025	2026
January	37	44	<b>53</b>
February	34	41	<b>52</b>
March	33	38	<b>41</b>
April	29	32	<b>38</b>
May	28	29	<b>39</b>
June	28	31	
July	29	32	
August	32	36	
September	32	37	
October	34	38	
November	35	44	
December	43	47	

## Median DOM



Month	2024	2025	2026
January	11	16	<b>30</b>
February	8	13	<b>21</b>
March	6	9	<b>12</b>
April	6	7	<b>9</b>
May	6	8	<b>9</b>
June	7	9	
July	11	10	
August	12	16	
September	12	17	
October	14	17	
November	15	24	
December	20	31	