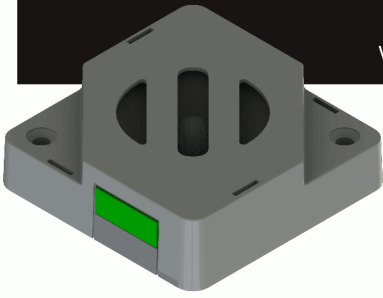


# NF20

## Information Sheet

[www.notifi.com.au](http://www.notifi.com.au)

# Notifi



The Notifi NF20 is a fully customisable elevator chime that offers a uniquely flexible interface to allow for compatibility and ease of installation.

Contact us for customisation options including loading of provided sounds or for complete sound design services.

## WIRING & SETTINGS

**COMMON** The power return path for the device. The default configuration is common positive. Common negative can be provided on request.

**UP** Apply power to this pin to initiate an 'up' audio signal. Power should be sustained for the duration of the signal.

**DOWN** Apply power to this pin to initiate a 'down' audio signal. Power should be sustained for the duration of the signal.

**ALT2** Pull this pin to power or common to select the second alternate signal (if programmed). Contact us to discuss alternate sound options and other customisations.

**QUIET** Pull this pin to power or common to decrease the volume level by 75%. See volume settings for more detail.

**ALT SOUND** (switch) Set this switch to 'ON' to select an alternative signal. By default will select between the standard chime and a more traditional chime, but may be customised as per customers needs.

## VOLUME SETTINGS

BOOST	VOLUME	SETTING
1	1	Over-Drive
1	0	Loud
0	1	Normal
0	0	Soft

\*pull the QUIET pin to common to decrease all output settings by 75%. This can be permanently tied to COMMON, or can be controlled to offer a lower sound at certain times of day etc.



## SPECIFICATIONS

VOLTAGE	12VDC - 24VDC
POWER	12W (typical power)
DIMENSIONS	66mm x 66mm x 20mm
MOUNTING	4mmØ, 50mm x 50mm

Contact us at [info@notifi.com.au](mailto:info@notifi.com.au) or by calling (02) 9524 1126



Designed and Manufactured in Australia by BRC Lifts