

Ottawa County Historical Museum

Post Office Box 845
126 West Third Street
Port Clinton, Ohio 43452
419-732-2237

James Rusincovitch, President
Dianne Rozak, Secretary
Mary Jane Zeis, Treasurer

Natalie Bredbeck, Trustee
Susan Hany, Trustee
T. Park McRitchie, Trustee
Tom Priesman, Trustee
Lockwood Zeis, Trustee

Thomas Day, Museum Curator

2007 – 2008 Membership Drive

Our County Museum – This year marks The Ottawa County Historical Museum's 75th year in operation. The Ottawa County Historical Museum was opened in 1932 in the Port Clinton City Hall. The early 1980's saw the museum relegated to the building's basement. The site dampness and potential for major flooding led a group of concerned citizens to find a more suitable location for the museum. The museum was relocated to its current location with the consent of the city in 1990. Our mission, as always, is to preserve and protect records and artifacts pertinent to the development of the county and provide an educational information and artifact base for future generations to study.

Current Happenings – There was a recent article in the News Herald about our museum being interested in joining the developers of Waterworks Park in Port Clinton to relocate the museum. This article was untrue. The idea of moving the museum to a new location has not been discussed with the developers of the water park or our Museum Trustees. I would like to point out that the trustees are not interested in losing control of the museum's artifacts or records. All the items in our museum have been entrusted to us for perpetuity and will not be put in the position of falling into the control of any group that doesn't have a vested interest in Ottawa County's future.

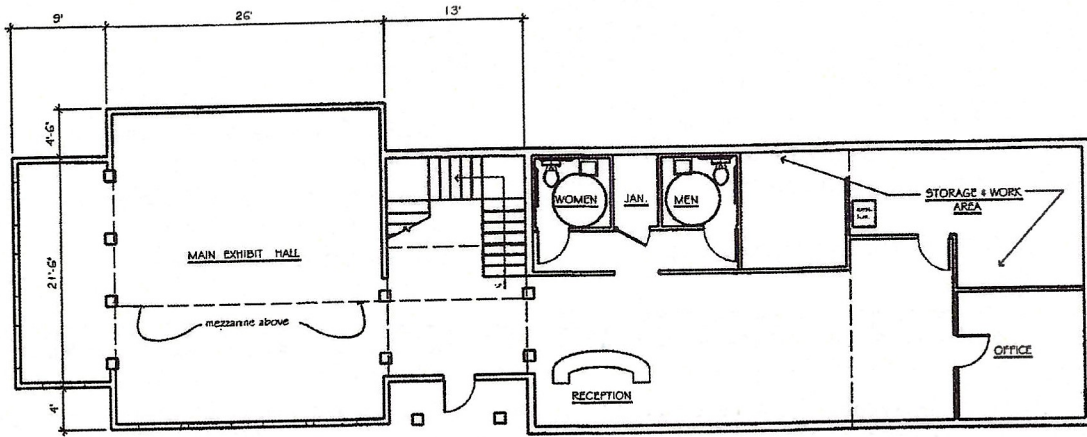
The Ottawa County Historical Museum does need more room to display artifacts. To that end, the museum trustees have been working with local architect Kenneth Schoenfeld to provide more room at our current location on Third Street. Kenneth has come up with a plan that will blend in with our Third Street surroundings and provide us with over twice the floor space of our current building. Look at the reverse side of this letter for Kenneth's depiction of what the new museum will look like. Where is the money coming from for this expansion? Much of it has already been donated by Ottawa County residents. For years, whenever a donor specified that money they sent to us was "for a future renovation or expansion" the money was set aside and not used for general museum purposes. Since we have been here in our current location for approaching two decades, this money has added up. Any additional money needed will be obtained through a planned capital improvement fund drive that will kick off this year.

Yearly Membership Drive – The month of May brings our annual membership drive. Dues remain at \$15.00 for an individual, or \$20.00 for a family. A sponsoring membership is \$50.00. If you wish to make a donation to the building fund, please designate it for that purpose.

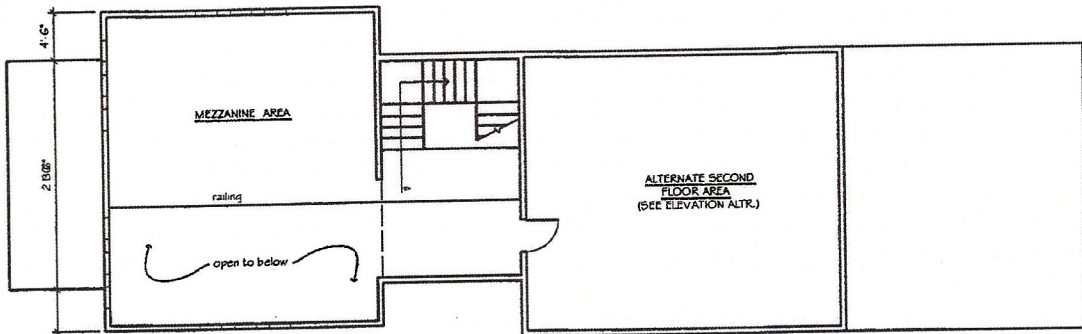
The museum's "No admission charge" policy continues. Your continued or new support is the museum's lifeline. Please continue to think of this as your museum and come in and visit it often. A coupon and envelope is enclosed. **THANK YOU!!**

Thomas Day
Curator

Architect's proposal for the new Ottawa County Historical Museum



FLOOR PLAN CONCEPT
 1/8" = 1'-0"
 1,265 SF



MEZZANINE PLAN
 1/8" = 1'-0"



The proposal includes tripling the exhibit area space of the current museum. The new building also incorporates the old building into the floor plan. The front door would be relocated, restroom would be brought up to current code, a mezzanine and upstairs added, and storage & artifact preparation locations improved.