

CINNAMON DHONVELI MALDIVES

Conquer the waves and dive into an underwater adventure by day, unwind under the stars and revive your spirits with island delights by night. Enjoy a beautiful tropical getaway with resort comforts and world-class service

Official Category : ★★★★★
Total Number of Rooms: 148
Hotel Address: North Male Atoll, Republic Of Maldives
Telephone: (+960) 664 0055
(+960) 664 0066
Distance: From Male - 13 KM

Our speedboats transfer service operates 24 hours of the day and can accommodate early morning and late night flights. Duration of journey is approximately 25 minutes (weather permitting)

E-mail: info@cinnamonhotels.com
Reservations: dhonveli@cinnamonhotels.com
Website: www.cinnamonhotels.com
Area Scale: 7.5 Hectares

Accepted Currency & Credit Cards:
Currency USD, GBP, EURO, JPY, MVR
Credit Cards 

Tranquility (PVT) LTD | 2nd Floor, H Maizen building | Sosun Magu | Male 20252 | Republic Of Maldives
Email: sales.mw@cinnamonhotels.com | Telephone: + 960 333 6000 | Fax: +960 332 6264
Office Operating Hours: Sunday to Thursday - 9:00Hrs - 17:30Hrs | Saturday - 09:30Hrs - 14:30Hrs
| Friday - Office Closed

OUR RESTAURANTS & DINING

RESTAURANTS AND BARS

Koimala Restaurant
Maakana Restaurant
Raiyvilla Bar
Raalhu Bar
Beach Bar
Rehendhi Restaurant & Bar
TEX MEX

MEAL TIMES

Breakfast 7.30am to 9.30am

Lunch 12.30pm to 2.30pm

Dinner 7.30pm to 9.30pm

*All meals are served buffet-style at all restaurants other than Tex Mex.
Tex Mex is an Ala Carte Restaurant

RAIYVILLA BAR

8.00am to 12.00midnight

RAALHU BAR

8.00am to 12.00midnight

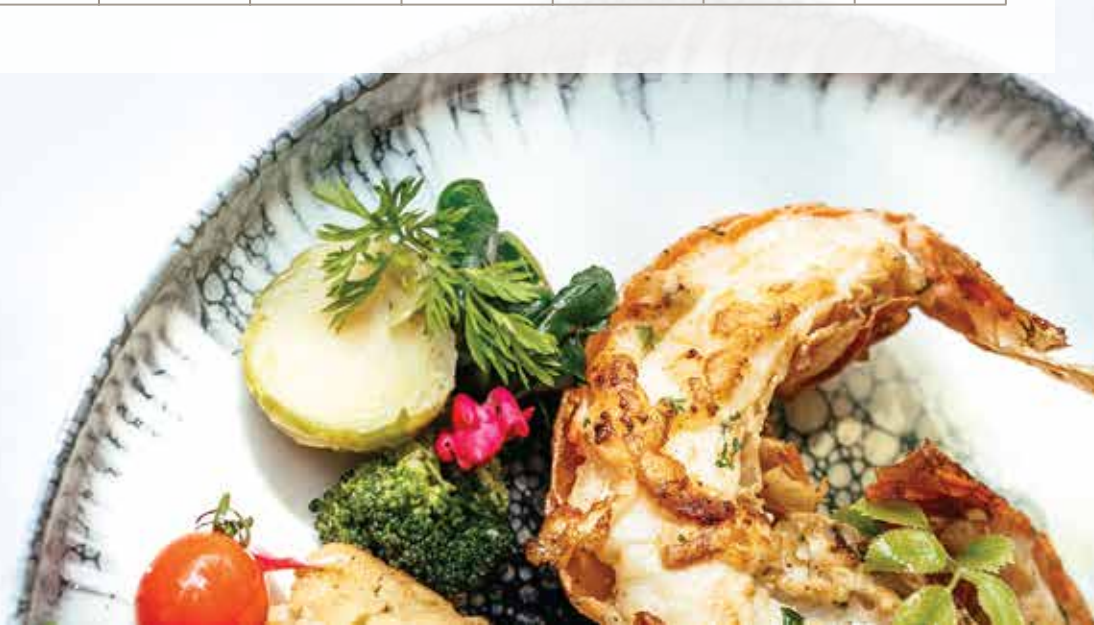
BEACH BAR

10.00am to 6.00pm

REHENDHI BAR

8.00am to 1.00am

Dining Options	Superior Ocean View	Duplex Garden Bungalow	Beach Bungalow	Water Bungalow	Junior Beach Suite	Overwater Suite	Beach Suite with Pool
Koimala Restaurant	✓	✓	✓	On Request & Availability	On Request & Availability	On Request & Availability	On Request & Availability
Maakana Restaurant	On Request & Availability	On Request & Availability	On Request & Availability	✓	✓	✓	✓
Rehendhi Restaurant & Bar	On Request with Supplement Charge Applicable	On Request with Supplement Charge Applicable	On Request with Supplement Charge Applicable	On Request with Supplement Charge Applicable	✓	✓	✓



OUR EXPERIENCES

ENTERTAINMENT

DJ Nights
Live Band
Music Beach Party
Movie Night
Cocktail Party

WATER SPORTS

Diving
Snorkelling
Motorised and
Non-Motorised Water Sports

OUTDOOR SPORTS

Beach Volleyball
Badminton
Basketball
Tennis

INDOOR SPORTS

Mini Gym
Table Tennis
Billiard
Air Hockey

OTHER FACILITIES

Fitness Room / Gym ✓
Spa ✓
Yoga ✓
Flood-Lit Tennis Court ✓
Badminton ✓
Table Tennis ✓
Billiards ✓
Beach Volley Ball ✓

Darts ✓
Surfing* ✓
Scuba Diving & Lessons ✓
Snorkelling & Lessons ✓
Parasailing ✓
Fly boarding ✓
Windsurfing ✓
Jet Ski / Water Ski ✓

Wakeboard / Kneeboard ✓
Supski ✓
Catamaran ✓
Kayak / Canoes ✓
Fishing ✓
Boat Pier ✓
Children's Play Area ✓
In- house Doctor ✓

Infirmery ✓
Lounges ✓
Swimming Pool ✓
Kids' Pool ✓
Live Music ✓
Tailor Shop ✓
Souvenir Shop ✓
Laundry Service ✓

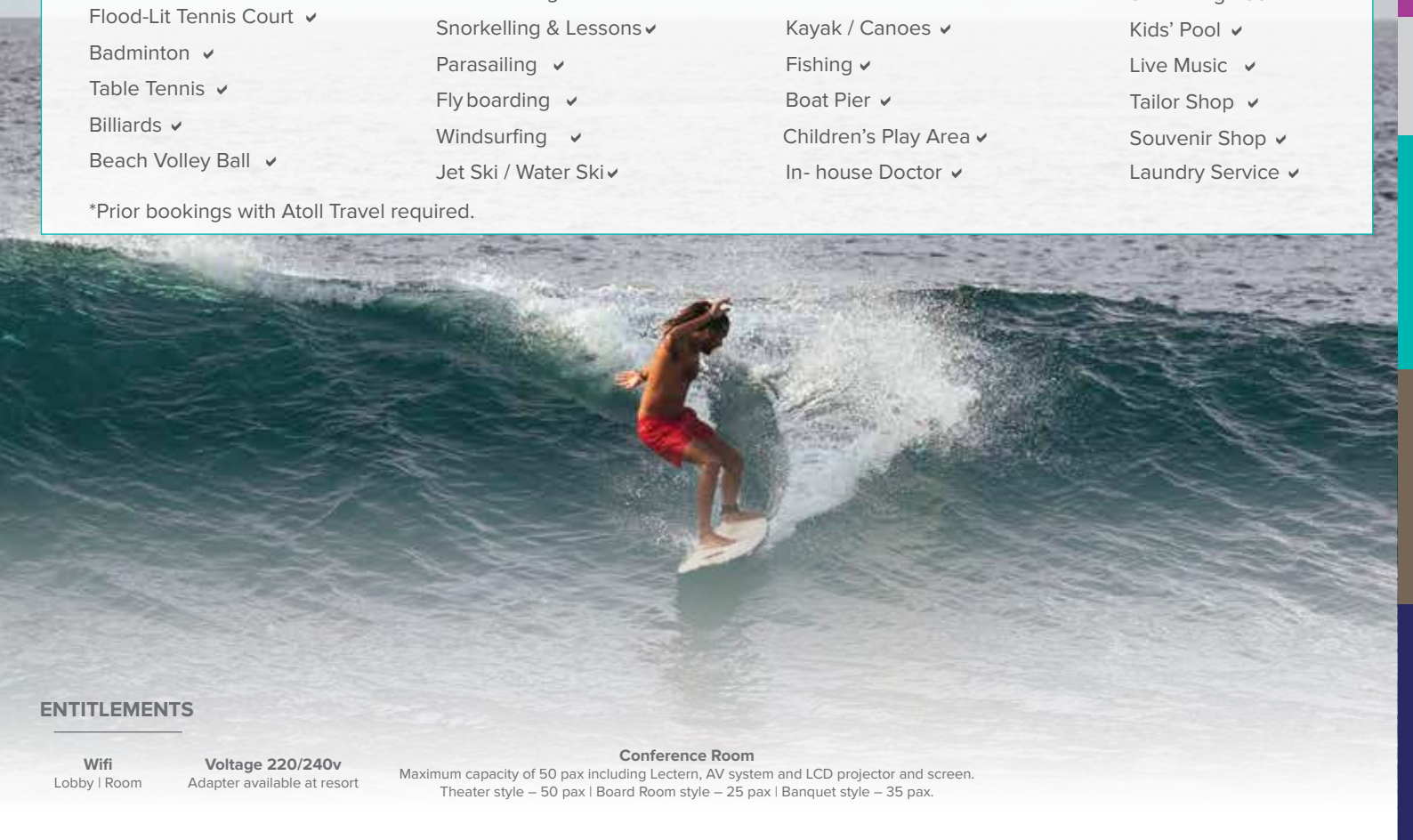
*Prior bookings with Atoll Travel required.

ENTITLEMENTS

Wifi
Lobby | Room

Voltage 220/240v
Adapter available at resort

Conference Room
Maximum capacity of 50 pax including Lectern, AV system and LCD projector and screen.
Theater style – 50 pax | Board Room style – 25 pax | Banquet style – 35 pax.



OUR ROOMS

Cinnamon Dhonveli Maldives	02 Adults + 01 Infant	02 Adults + 01 Child	03 Adults	03 Adults + 01 Infant	03 Adults + 01 Child	02 Adults + 01 Infant + 01 Child	02 Adults + 02 Children	02 Adults + 03 Children	04 Adults	04 Adults + 01 Infant
Superior Ocean View	✓	✓	✓	✓	✓	✓	✓	✗	✓	✗
Duplex Garden Bungalow	✓	✓	✓	✓	✓	✓	✓	✗	✗	✗
Beach Bungalow	✓	✓	✓	✓	✗	✓	✓	✗	✗	✗
Water Bungalow	✓	✗	✓	✓	✗	✗	✗	✗	✗	✗
Junior Beach Suite	✓	✓	✓	✓	✓	✗	✗	✗	✗	✗
Overwater Suite	✓	✓	✓	✓	✗	✗	✗	✗	✗	✗
Beach Suite with Pool	✓	✓	✓	✓	✓	✓	✓	✓	✓	✓

Standard Age Specification - Infant: 0 to 1 year | Children: 2 to 11 years | Adult: 12 years and above





Superior Ocean View



Duplex Garden Bungalow



Beach Bungalow



Water Bungalow



Junior Beach Suite



Over Water Suite



Beach Suite With Pool

ROOM SPECIFICATIONS

Cinnamon Dhonveli Maldives	Superior Ocean View	Duplex Garden Bungalow	Beach Bungalow	Water Bungalow	Junior Beach Suite	Overwater Suite	Beach Suite with Pool
Total Rooms	148						
No. of Rooms	24	20	32	36	08	24	04
Size of Room Including Terrace	59m ²	55m ²	59m ²	63m ²	95m ²	95m ²	170m ²
Hair Dryer	✓	✓	✓	✓	✓	✓	✓
Bathrobe / Bath Slippers	✗	✗	✗	✓	✓	✓	✓
Pillow Menu	✗	✗	✗	✓	✓	✓	✓
King Size Bed	✓	✓	✓	✓	✓	✓	✓
Separate Living / Bedroom	✗	✓	✗	✗	✗	✓	✓
No. of Additional Single Beds	01	02	01	01	02	01	03
Sea View	✓	✗	✓	✓	✓	✓	✓
Land View	✓	✓	✓	✗	✓	✗	✓
Sofa / Armchair / Day Bed	✓	✓	✓	✓	✓	✓	✓
Telephone	✓	✓	✓	✓	✓	✓	✓
LED TV	✓	✓	✓	✓	✓	✓	✓
Life Jackets	✓	✓	✓	✓	✓	✓	✓
Umbrella	On Request	On Request	On Request	On Request	On Request	On Request	On Request
Ceiling Fan	✗	✗	✗	✓	✗	✓	✗
Split Air Conditioning	✓	✓	✓	✓	✓	✓	✓
In - room safe	✓	✓	✓	✓	✓	✓	✓
Desalinated Water	✓	✓	✓	✓	✓	✓	✓
Jacuzzi	✗	✗	✗	✓	✓	✗	✗
Bathtub	✗	✗	✗	✗	✗	✓	✗
Outdoor Shower	✗	✗	✗	✗	✓	✗	✓
Indoor Shower	✓	✓	✓	✓	✗	✓	✗
Hot & Cold Water	✓	✓	✓	✓	✓	✓	✓
Fire Protection System	✓	✓	✓	✓	✓	✓	✓
Tea & Coffee Making Facilities	✓	✓	✓	✓	✓	✓	✓
Mini Bar With Charge	✓	✓	✓	✓	✓	✓	✓
Iron & Ironing Board	✓	✓	✓	✓	✓	✓	✓
Raincoats	✓	✓	✓	✓	✓	✓	✓
Portable Sound System	✗	✗	✗	✓	✓	✓	✓
Glass Bottom Floor	✗	✗	✗	✗	✗	✓	✗
Coffee Machine	✗	✗	✗	✓	✓	✓	✓
Room Service	✓	✓	✓	✓	✓	✓	✓
Sitting Area with Terrace	✓	✓	✓	✓	✓	✓	✓
Hammock	✗	✗	✗	✗	✗	✓	✗
Raincoats	✗	✗	✗	✗	✗	✗	✓



The All Inclusive Package is Valid from 8.00am - 12.00midnight

Meals

Breakfast : 7.30am - 9.30am
Lunch : 12.30pm - 2.30pm
Dinner : 7.30pm - 9.30pm

Alcoholic & Non Alcoholic Beverages House Brand

- Regular House-Poured Wines
- Mini Bar – Soft Drinks and Canned Beer Entitlements – Refilled once daily
- All House Brand Alcohol Served by the Glass
- Selection of Cocktails from the Menu
- Draught Beer
- Selection of Aerated Soft Drinks & Canned Fruit Juices
- Bottled Still Water
- Tea & Coffee

The Following Services and Facilities are NOT part of the Bed & Breakfast, Half Board, Full Board, or All Inclusive Bookings, and as such shall be chargeable to the Guest:

- Food & Beverages not listed above
- Mini Bar Items not listed above
- Champagne
- In room dining
- All Tobacco & Tobacco related products
- Excursions & Special Promotions not listed above
- Dive & Water sports centre facilities
- Spa Treatment & Facilities not listed above

Important to know...

- All beverages should be consumed within the Restaurant / Bar premises only.
- If you wish to entertain anyone, please be kind enough to settle his / her bill payments.
- All Inclusive Package is not valid between 12.00midnight to 8.00am. During this time, Food & Beverages will be billed on consumption.
- Bars remain open until the last guest leaves.
- No alcoholic beverages shall be served or purchased by persons under 18 years.
Guests are advised to be mindful of their safety when consuming alcohol and ensure that they are in a position to return to their rooms.
- The All Inclusive Package is available for your entire length of stay and for your own consumption.
- You must sign all Food & Beverage bills, except for you Buffet meals. The Premium All Inclusive and Standard All Inclusive benefits will have no charges and be posted to Hotel Account as part of the entitlements.
- All Inclusive Package benefits can be enjoyed until Standard Checkout Time (12noon).
- Please note that products and services not included in the All Inclusive Package must be settled at check-out.
- Guests must sign the cheque / check for all F&B consumed, including buffets. This is for internal accounting purposes and will be set off against the mealplan booked.

Premium All Inclusive Package (on Request)

Meals

Breakfast : 7.30am - 9.30am
Lunch : 12.30pm - 2.30pm
Dinner : 7.30pm - 9.30pm

Alcoholic & Non Alcoholic Beverages House Brand

- Regular House-Poured Wines
- All House Brand Alcohol Served by the Glass
- Selection of Cocktails from the Menu
- Selection of Draught Beer
- Selection of Aerated Soft Drinks & Canned Fruit Juices
- Bottled Still Water
- Tea & Coffee

Our Premium All Inclusive Package Includes:

(Valid for a minimum stay of 5 nights only) 8.00am to 12.00midnight

- All items included in the Standard All – Inclusive Package
 - Bottle of Sparkling Wine on Arrival
 - Full Mini Bar Entitlements – Refilled once daily
 - Premium Alcohol & Premium Cocktails
 - Fresh Juices & Milkshakes
 - Tea & coffee
 - 2 Excursions (Sunset Fishing / Swim & Snorkel / Dolphin Watching / Huraa Excursion)
 - A special dinner on the beach - 3 course Chef's selection
 - A 60-Minute signature Balinese Spa Treatment (Adult Only)
 - Turndown service with an amenity
 - Use of Fitness Centre, Badminton/ Tennis Courts, Table Tennis, Billiard/Snookers, Beach Volleyball (equipment included)
- *Conditions Apply

The Following Services and Facilities are NOT part of the Bed & Breakfast, Half Board, Full Board, or All Inclusive Bookings, and as such shall be chargeable to the Guest:

- Food & Beverages not listed above
- Champagne
- In Room Dining
- All Tobacco & Tobacco related products
- Excursions & Special Promotions not listed above
- Diving Centre Facilities
- Spa Treatment & Facilities not listed above

IMPORTANT...

- All beverages should be consumed within the Restaurant and Bar premises only.
- If you wish to entertain anyone, please be kind enough to settle his/her bill payments.
- Premium All Inclusive package is not valid between 12.00midnight to 8.00am. During this time, Food & Beverages are billed on consumption.
- Bars remain open until the last guest leaves.
- No alcoholic beverages shall be served or purchased by persons under 18 years.
- Guest are advised to be mindful of their safety when consuming alcohol and ensure that they are in a position to return to their room.
- Premium All Inclusive package is available only for your entire length of stay and for your own consumption.
- You must sign all Food & Beverage bills, including Buffet meals. The Premium All Inclusive and Standard All Inclusive benefits will have no charges and be posted to Hotel Account as part of the entitlements.
- Premium All Inclusive Package benefits can be enjoyed until the Standard check out time (12.00noon) on departure.
- Please remember that products and services not included in All Inclusive or Premium All Inclusive Package must be paid and settled at the point of check out.