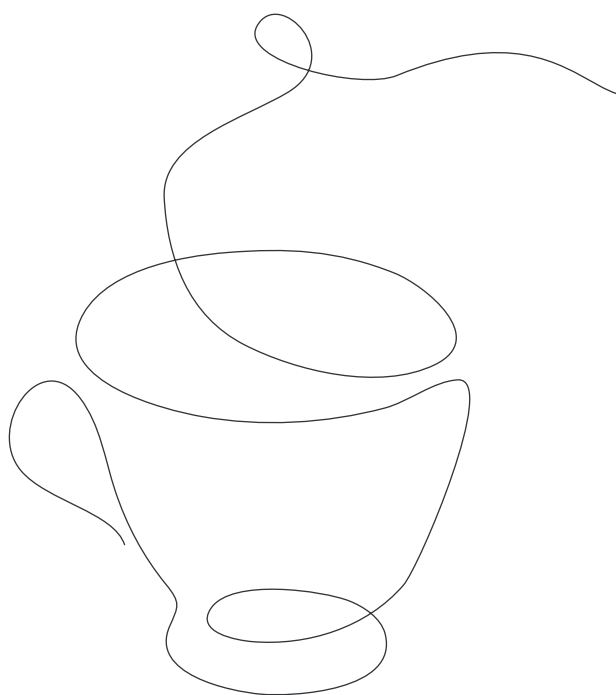


# A simple guide to your ***Bed & Breakfast*** package at LUX\* South Ari Atoll

## Food and Drinks



### ***Breakfast***

#### ♦ **MIXE**

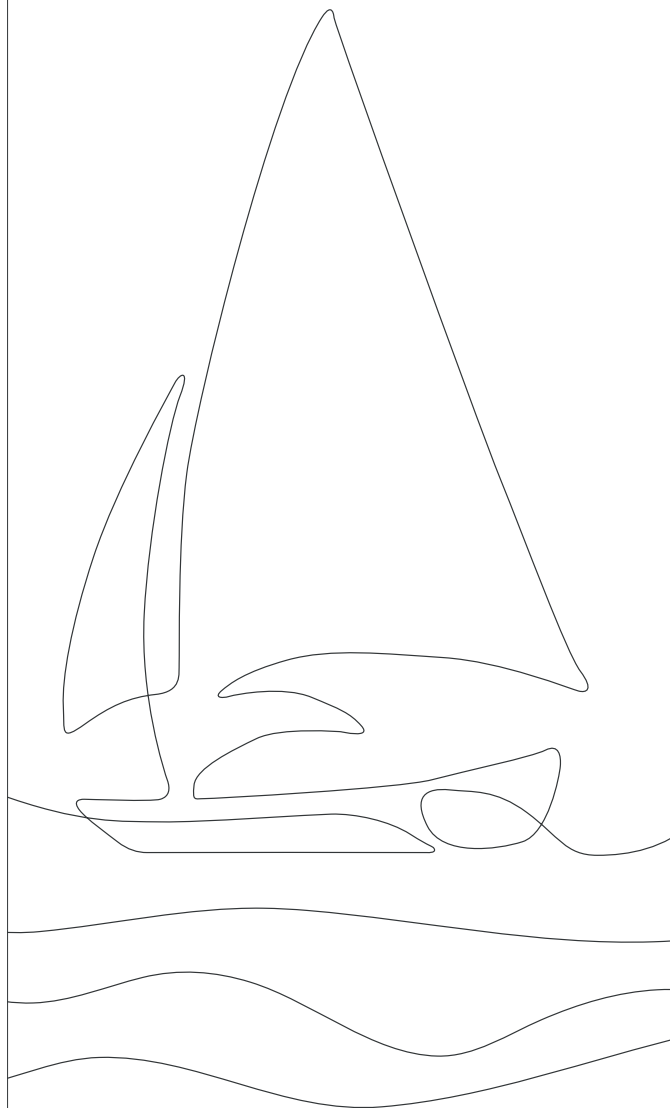
Daily from 7hr00 - 10hr30

#### ♦ **East Market**

Daily from 7hr00 - 10hr30

Juices, coffee, and tea are included in the meal plan package during breakfast time.

**In-room dining** is not included in your meal plan. All other beverages will be charged upon consumption



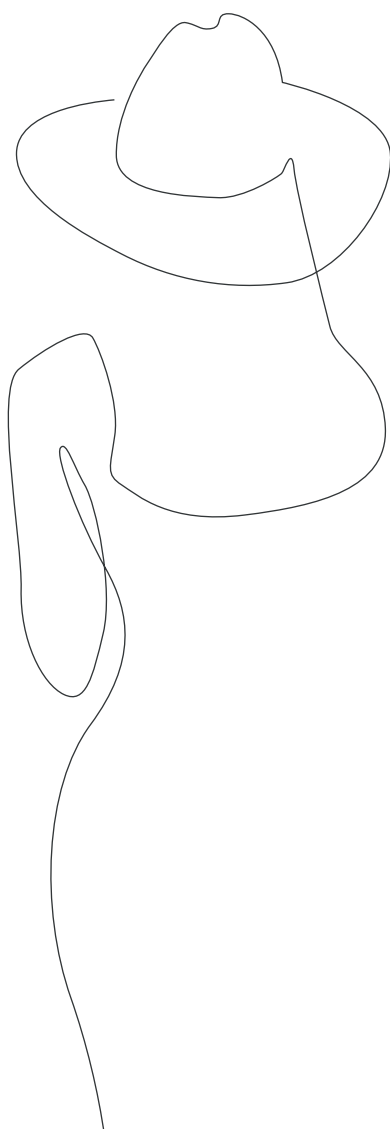
### **Explore unique collection of extraordinary experiences.**

- ♦ Whale Shark Trip with Marine Biologist
- ♦ Divine Dinner
- ♦ Yoga & Sound Bath aboard a Maldivian Dhoni
- ♦ Jetski safari

\* subject to supplement

## Dress Code

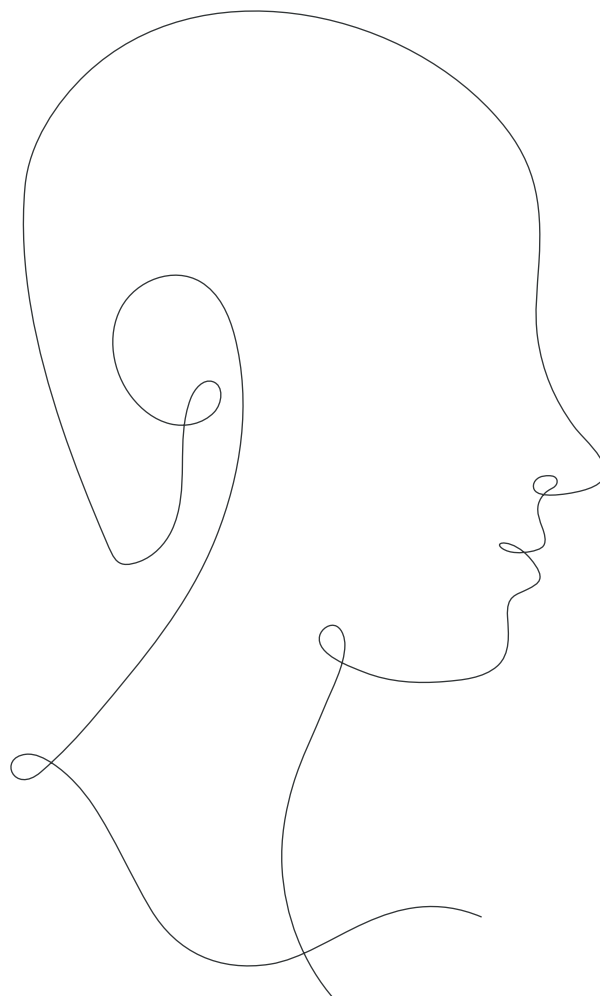
As relaxing as a holiday may be, we ask that you wear a cover-up over swimwear at our daytime restaurants. In the evening we kindly request a smart casual dress code in all the restaurants.



**Notes:** LUX\* South Ari reserves the right to close up to two restaurants throughout the year.

## Points to remember

- ♦ Beach service & poolside service are available only at Veli Pool Bar, Senses Beach, Senses. Food and drinks will be chargeable.
- ♦ Yoga and fitness classes, access to our sauna, steam room, plunge pool and spa relaxation area (reservation is mandatory and subject to supplement and availability at the spa).
- ♦ Unlimited access to the gym, floodlit tennis courts (rackets and balls provided), table tennis, bocce balls and beach volley.
- ♦ Live music, sunset DJ Sessions, Cinema Paradiso, Quiz and Bingo Nights.
- ♦ 40 unique complimentary experiences.
- ♦ Vegan-friendly.
- ♦ Kids' and teens' programmes all year round.



# A simple guide to your ***Half Board*** package at LUX\* South Ari Atoll

## Food and Drinks

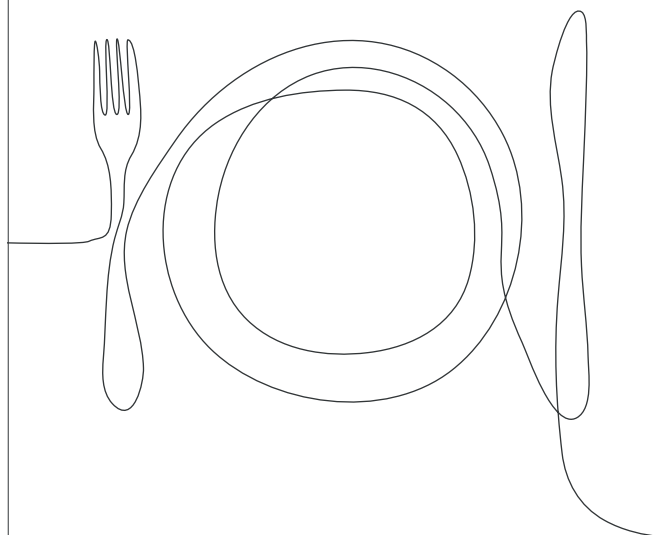
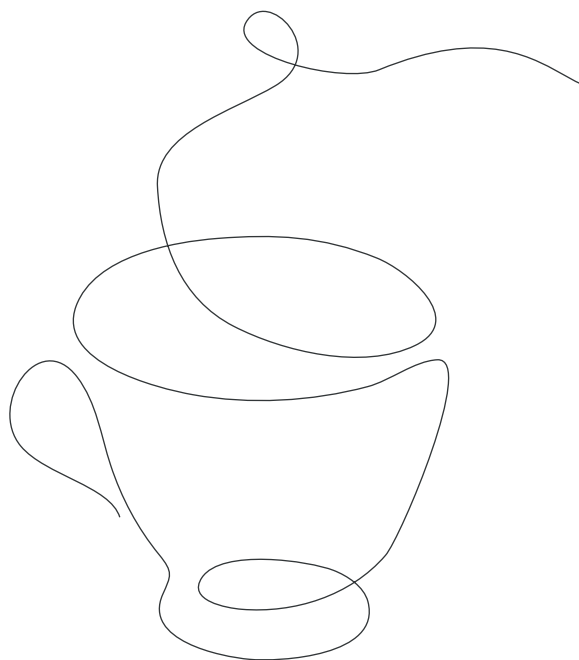
### *Breakfast*

#### ♦ **MIXE**

Daily from 7hr00 - 10hr30

#### ♦ **East Market**

Daily from 7hr00 - 10hr30



### *Dinner*

#### ♦ **MIXE**

Daily from 18hr30 - 22hr00

#### ♦ **East Market**

Daily from 18hr30 - 22hr00

#### ♦ **Beach Rouge**

Daily from 18hr30 - 22hr00

#### ♦ **Senses**

Daily from 18hr30 - 22hr00

You are entitled for a USD 30 credit per person per meal on the food charges at Umami or Allegria.

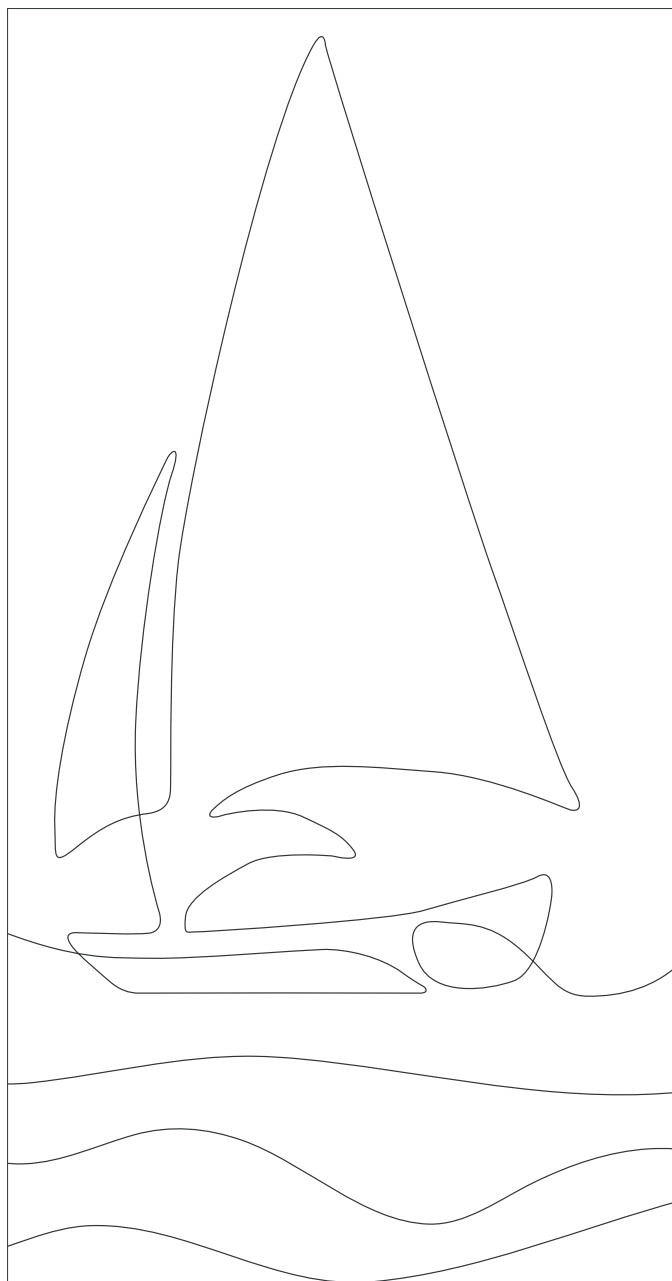
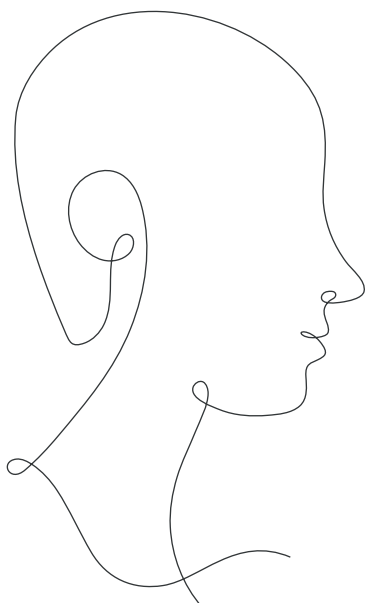
**In-room dining** is not included in your meal plan. All other beverages will be charged upon consumption

## Dress Code

As relaxing as a holiday may be, we ask that you wear a cover-up over swimwear at our daytime restaurants. In the evening we kindly request a smart casual dress code in all the restaurants.

## Points to remember

- Beach service & poolside service are available only at Veli Pool Bar, Senses Beach, Senses. Food and drinks will be chargeable.
- Yoga and fitness classes, access to our sauna, steam room, plunge pool and spa relaxation area (reservation is mandatory and subject to supplement and availability at the spa).
- Unlimited access to the gym, floodlit tennis courts (rackets and balls provided), table tennis, bocce balls and beach volley.
- Live music, sunset DJ Sessions, Cinema Paradiso, Quiz and Bingo Nights.
- 40 unique complimentary experiences.
- Vegan-friendly.
- Kids' and teens' programmes all year round.



### Explore unique collection of extraordinary experiences.

- Whale Shark Trip with Marine Biologist
  - Divine Dinner
  - Yoga & Sound Bath aboard a Maldivian Dhoni
  - Jetski safari
- \* subject to supplement

**Notes:** LUX\* South Ari reserves the right to close up to two restaurants throughout the year.

# A simple guide to your ***Special Full Board*** package at LUX\* South Ari Atoll

## Food and Drinks

### *Breakfast*

#### ♦ MIXE

Daily from 7hr00 - 10hr30

#### ♦ East Market

Daily from 7hr00 - 10hr30

### *Lunch*

#### ♦ Lagoon Bar

Daily from 12hr00 - 15hr00

#### ♦ Veli Bar

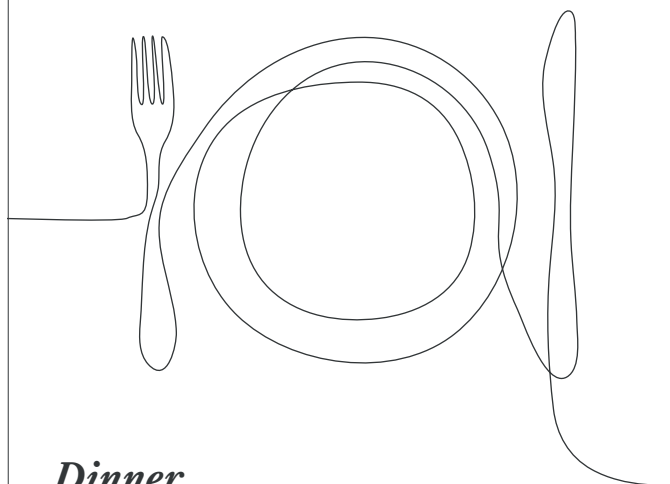
Daily from 12hr00 - 15hr00

#### ♦ Beach Rouge

Daily from 12hr00 - 15hr00

#### ♦ Senses

Daily from 12hr00 - 15hr00



### *Dinner*

#### ♦ MIXE

Daily from 18hr30 - 22hr00

#### ♦ East Market

Daily from 18hr30 - 22hr00

#### ♦ Beach Rouge

Daily from 18hr30 - 22hr00

#### ♦ Senses

Daily from 18hr30 - 22hr00

You are entitled for a USD 30 credit per person per meal on the food charges at Umami or Allegria.

## Drinks

Still water, sparkling water, soft drinks and Café LUX\* coffee are included during your meal only. All other beverages will be charged upon consumption.

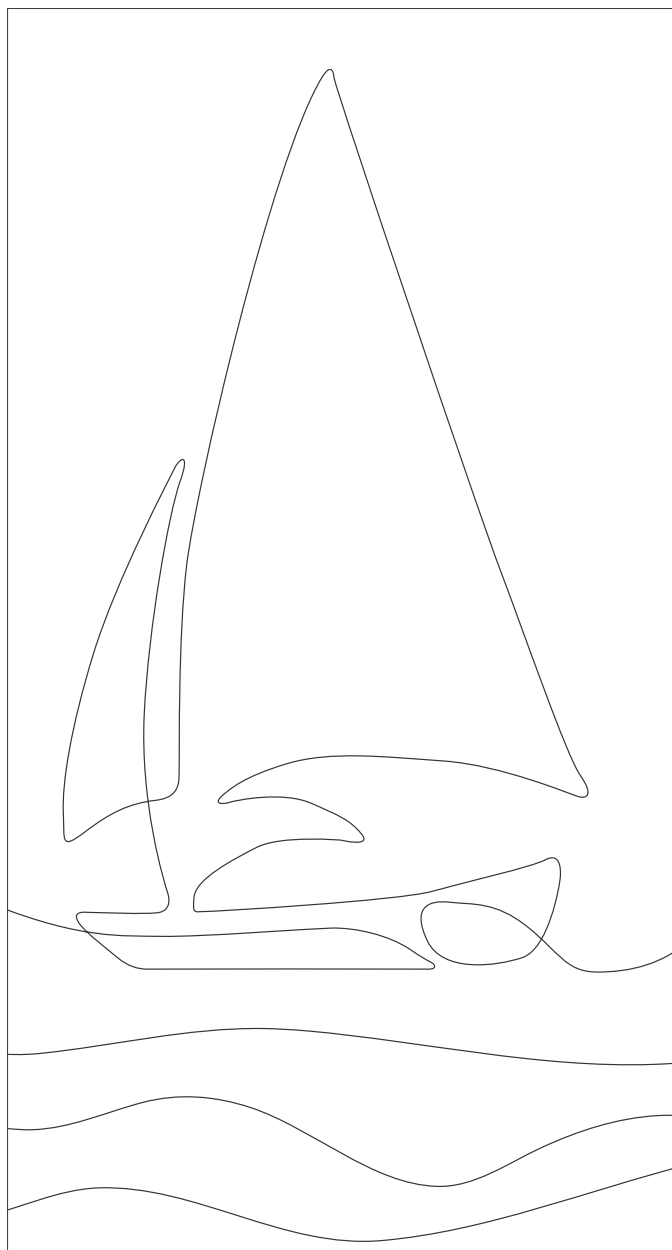
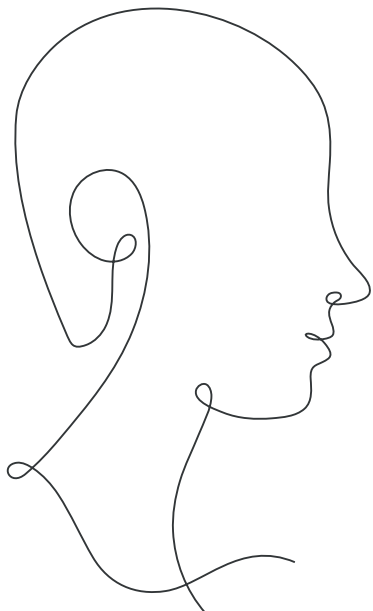
**In-room dining** is not included in your meal plan. All other beverages will be charged upon consumption

## Dress Code

As relaxing as a holiday may be, we ask that you wear a cover-up over swimwear at our daytime restaurants. In the evening we kindly request a smart casual dress code in all the restaurants.

## Points to remember

- Beach service & poolside service are available only at Veli Pool Bar, Senses Beach, Senses. Food and drinks will be chargeable.
- Yoga and fitness classes, access to our sauna, steam room, plunge pool and spa relaxation area (reservation is mandatory and subject to supplement and availability at the spa).
- Unlimited access to the gym, floodlit tennis courts (rackets and balls provided), table tennis, bocce balls and beach volley.
- Live music, sunset DJ Sessions, Cinema Paradiso, Quiz and Bingo Nights.
- 40 unique complimentary experiences.
- Vegan-friendly.
- Kids' and teens' programmes all year round.



### Explore unique collection of extraordinary experiences.

- Whale Shark Trip with Marine Biologist
  - Divine Dinner
  - Yoga & Sound Bath aboard a Maldivian Dhoni
  - Jetski safari
- \* subject to supplement

**Notes:** LUX\* South Ari reserves the right to close up to two restaurants throughout the year.

# A simple guide to your *All-Inclusive* package at LUX\* South Ari Atoll

## Food and Drinks

### *Breakfast*

#### ♦ MIXE

Daily from 7hr00 - 10hr30

#### ♦ East Market

Daily from 7hr00 - 10hr30

### *Lunch*

#### ♦ Lagoon Bar

Daily from 12hr00 - 15hr00

#### ♦ Veli Bar

Daily from 12hr00 - 15hr00

#### ♦ Beach Rouge

Daily from 12hr00 - 15hr00

#### ♦ Senses

Daily from 12hr00 - 15hr00

**In-room dining** is not included in your meal plan. All other beverages will be charged upon consumption

**Notes:** LUX\* South Ari reserves the right to close up to two restaurants throughout the year.

### *Dinner*

#### ♦ MIXE

Daily from 18hr30 - 22hr00

#### ♦ East Market

Daily from 18hr30 - 22hr00

#### ♦ Beach Rouge

Daily from 18hr30 - 22hr00

#### ♦ Senses

Daily from 18hr30 - 22hr00

Pastries at Café LUX\* and Ice cream at ICI parlour are included in your meal plan. You are entitled for a USD 30 credit per person per meal on the food charges at Umami or Allegría.

## Drinks

- ♦ In all restaurants and bars, a wide selection of beverages - soft drinks, tea, coffee, beers, wines, sparkling wine, fresh and canned juices, water cocktails, liquors and selected champagne by glass.
- ♦ Wine library featuring 90 premium bottles included in AIP
- ♦ Tea and coffee facilities in the villas and coffee at Café LUX\* are included in your meal plan.
- ♦ Mini-bar: Water, Juice, Soft drinks, Wines, Vodka, Gin, Beers, Sweet and savoury bites are included and replenished once a day).

## Explore unique collection of extraordinary experiences.

- ♦ Whale Shark Trip with Marine Biologist
- ♦ Divine Dinner
- ♦ Yoga & Sound Bath aboard a Maldivian Dhoni
- ♦ Jetski safari

\* subject to supplement

## Points to remember

- ♦ Beach service & poolside service are available only at Veli Pool Bar, Senses Beach, Senses Pool and Beach Rouge.  
Food and drinks will be chargeable.
- ♦ Yoga and fitness classes, access to our sauna, steam room, plunge pool and spa relaxation area (reservation is mandatory and subject to supplement and availability at the spa).
- ♦ Unlimited access to the gym, floodlit tennis courts (rackets and balls provided), table tennis, bocce balls and beach volley.
- ♦ Live music, sunset DJ Sessions, Cinema Paradiso, Quiz and Bingo Night
- ♦ 40 unique complimentary experiences.
- ♦ Vegan friendly
- ♦ Kids' and teens' programmes all year round.

## Conditions

- ♦ For individual clients, All-Inclusive benefits start upon arrival at the resort and finish at departure time from the resort (irrespective of check-out time).
- ♦ All-Inclusive is an optional supplement and is an addition to the base meal plan of the resort.
- ♦ The whole remaining duration of a stay must be on the same meal plan basis.
- ♦ No compensation in cash or kind will be offered for non-consumed items.
- ♦ Families, guests sharing rooms or travelling as a “party” must always be booked under the same package conditions, this also stands for children and teenagers.
- ♦ All drink and food items are for personal consumption only, and must be ordered one at a time. The drink and food items may not be shared with a person who has not opted for the All-Inclusive package.
- ♦ Any drink or food items, offered to a non-resident or visitor, will be charged at listed prices. No take-away orders from restaurants can be made on All-Inclusive package.

## Dress Code

As relaxing as a holiday may be, we ask that you wear a cover-up over swimwear at our daytime restaurants. In the evening we kindly request a smart casual dress code in all the restaurants.