



## Kyrie Farm Spring Newsletter



As spring begins to emerge, we are delighted to share some of the recent developments and moments of connection from Kyrie Farm.

In this edition, we are especially pleased to feature the recent RTÉ One Nationwide programme on Kyrie Farm. We also take a moment to acknowledge and thank **Ciara Glynn & Hugh Millar** for their significant contributions to the project as they step down from the board. It was also a pleasure to welcome a visit from Sinn Féin representatives, along with many other encouraging developments across the farm.

As we continue to progress our philanthropic efforts, if any of our readers have connections they feel may be helpful, we would be very grateful to hear from you — please don't hesitate to get in touch. You will also find details at the end of the newsletter on three very different fundraising initiatives supporting the ongoing work of the charity.

Finally, Kyrie Farm is currently seeking someone to support the team in an administrative role — a wonderful opportunity for an organised and motivated individual with strengths in coordination, project support and administration.

Happy reading. 

### **RTÉ Nationwide Feature**

We were truly delighted to have Kyrie Farm featured on **RTÉ One Nationwide** in February. It was a wonderful opportunity to share the vision of the farm and the spirit of what we are building.

A special thank you to Valerie Waters, who produced and edited the programme so beautifully.

You can watch the feature here:

 <https://youtu.be/TJsioQnJOk0?si=FmGa2GMFSfhDLR53>



## 👉 Acknowledgements



We would like to express our deep thanks to **Ciara Glynn**, who has recently stepped down from the board of Kyrie Farm.

Ciara has made an immense and meaningful contribution — particularly in ensuring that the voice of lived experience remained central to our work, and in helping to shape the culture and values of the farm during an important phase of its development.

We are very grateful for all that Ciara has given and wish her every success in her continued advocacy and work in mental health. She leaves with our respect, appreciation, and warmest thanks.

We would also like to extend our sincere thanks to **Hugh Millar**, who has been part of Kyrie Farm since its inception. Hugh's support and guidance were instrumental in enabling the purchase of the farm, and his contribution has been central to the project's progress.

Through Crowley Millar, under Hugh's leadership, extensive legal advice and support have been provided to Kyrie Farm and continue to be generously offered.

We are deeply grateful to Hugh for his commitment and support, and we wish him every continued success

### **Visit of Sinn Fein Representatives to the Farm**

We were proud to welcome **Deputy Sorcha Clarke, Deputy Réada Cronin, Senator Chris Andrews** and **Siobhra Andrews** to Kyrie Farm.

Thank you for taking the time to visit, to listen, and to engage so thoughtfully with what we are trying to build — a recovery-focused model of mental health care rooted in community, connection and nature.

We were particularly encouraged by your reflection following the visit:

*"Investment in Kyrie Farm would not just be funding a project, it would be backing a vision for mental health care that is person-focused, restorative and community-led."*

This is exactly the conversation Ireland needs right now.

Kyrie Farm represents an opportunity to complement existing services and create real pathways back to purpose, dignity and belonging. We are very grateful for your support and look forward to continuing this important conversation.



### HSE Sustainability Group Visit

We were delighted to welcome the HSE Sustainability Group to Kyrie Farm for a day of mindfulness, time working with the land, and rich discussion on recovery-oriented approaches to mental health in Ireland.

At Kyrie Farm, we are developing a transformative model of recovery - one that supports people to reconnect, rebuild, and live to their fullest potential.

With full planning permission now in place, Kyrie Farm is “shovel ready” and, with the right support, could be up and running within two years.



### Kyrie Farm Octagon

The Octagon continues to take shape, with a new floor now installed — creating a beautiful space for wellbeing talks, gatherings and shared activities.

Our sincere thanks to **AIB Community Fund** and all those whose support made this possible, and to **Brian Madden and Billy Murphy** for their guidance and oversight of the works.



### February Volunteer Day

Our February Volunteer Day brought together 50 volunteers for a day full of energy, connection and shared purpose.

From hedge laying and clearing polytunnels, to preparing for the arrival of our donkeys and the spring planting ahead — so much was achieved.

But just as importantly, there was time for conversation, laughter, and connection with each other and the land.

Thank you to everyone who is helping to grow this community.



[Instagram](#)

### Donkey Arrival at Kyrie Farm

We were delighted to welcome Dax and Lester to Kyrie Farm in February, with thanks to the Irish Donkey Sanctuary.

Already, 21 volunteers have begun training to care for them — so we are confident they will be among the best cared-for donkeys in Ireland!

A special thank you to all who worked so hard to create their new home.

Next up... pigs and chickens!



### January Volunteer Day

At Kyrie Farm, volunteering is not about fixing — it is about showing up, being present, and creating space for relationship and connection.

A short video (linked below) captures a little of that spirit, along with some thoughtful reflections from **Dr Eoin Galavan**.

To every volunteer who gives their time, energy and heart — thank you. You are a vital part of what makes this place so special.



[Instagram](#)




### Fundraising for Operational Costs

Kyrie Therapeutic Farm Company Limited by Guarantee  
Charity Registration No. CHY 22704. Charities Regulatory Authority No. 20206028. Company Registration No. 673192  
w: [kyriefarm.ie](http://kyriefarm.ie) e: [info@kyriefarm.ie](mailto:info@kyriefarm.ie)



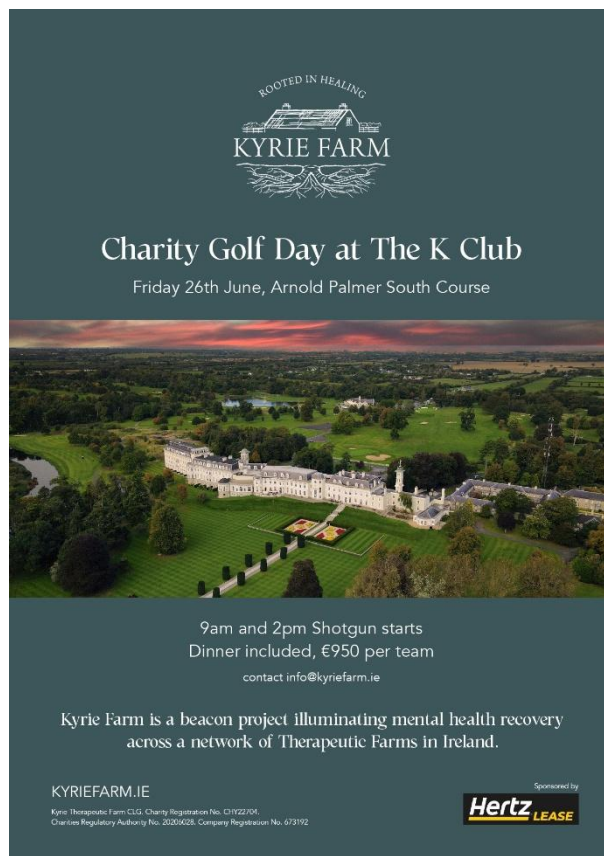
Alongside our ongoing engagement with philanthropy and Government to secure the €30m capital required to build Kyrie Farm, we continue to raise funds to support the day-to-day operations of the charity and the growing work on the farm.

This year, a number of wonderful initiatives are already underway:

-  Charity Golf Day at The K Club (June) – full details in the leaflet below. If this is something that may be of interest to you or your network, we would be very grateful if you might consider joining us or sharing it with others who may like to take part.
-  Step Up for Recovery Walk (September) – a meaningful and inclusive way to come together in support of mental health recovery.
-  Dublin Marathon (October) – we are delighted that 13 people have already committed to running on behalf of Kyrie Farm. If you or someone you know might like to take part, we would love to hear from you.

If you would like to get involved in any of these events, or simply help by spreading the word, please don't hesitate to get in touch at [info@kyriefarm.ie](mailto:info@kyriefarm.ie).

Thank you, as always, for your support — it makes a real difference



### Administrative Role – Operations & Executive Coordinator

Kyrie Therapeutic Farm Company Limited by Guarantee  
Charity Registration No. CHY 22704. Charities Regulatory Authority No. 20206028. Company Registration No. 673192

w: [kyriefarm.ie](http://kyriefarm.ie) e: [info@kyriefarm.ie](mailto:info@kyriefarm.ie)



Kyrie Therapeutic Farm is currently seeking an **Operations & Executive Coordinator** to play a central role in supporting both the development and day-to-day operations of the farm.

This is a varied and meaningful role, combining executive support, project coordination, governance administration and organisational management. Working closely with the Director, Board and a wider network of collaborators, the successful candidate will help ensure the charity operates efficiently and professionally as it progresses towards establishing a world-class therapeutic farm supporting recovery from mental health challenges.

This position would suit someone who is highly organised, proactive, and comfortable managing multiple responsibilities within a dynamic, early-stage organisation — and who is motivated by the mission and values of Kyrie Farm.

The role will be contract-based, with some flexibility for remote working. Remuneration will be commensurate with experience and aligned with the charity's ethos and current stage of development.

If you know someone who may be a good fit for this role and who would be inspired by what we are building, we would be very grateful if you could share this opportunity with them.

Interested candidates are invited to send a CV and brief expression of interest to: **[info@kyriefarm.ie](mailto:info@kyriefarm.ie)**