



The next stage  
in contemporary  
outdoor living



[hello@igardenvision.co.uk](mailto:hello@igardenvision.co.uk)



# TRANSFORMING OUTDOOR SPACES





# EXPLORE iGARDEN VISION

With iGarden, achieving the garden of your dreams is easier and quicker than ever before.

Through innovative engineering, we offer one of the most flexible approaches to contemporary garden design that delivers stunning results.



# WHY iGARDEN?

iGarden Vision is created by Invenire Design, a Wiltshire based company lead by Wayne Fiddes and Patrick Liddiard who have enjoyed careers in mechanical engineering and landscape gardening.

Using their knowledge of the complexities traditional landscape gardening faces – from the intense labour requirements to the difficult construction methods – they created iGarden Vision.

In doing so, they've created a unique approach to contemporary garden design that is fast to install, high in quality and easy to maintain, all with a beautiful aesthetic finish.

With simplicity in labour and design, they believe the iGarden approach transforms the way gardens are designed, built and enjoyed, while saving homeowners costs in renovations and remedial work for years to come.



**Initial Contact  
& Survey**



**Design**



**Manufactured**



**Installed**



**Finished**





# THE iGARDEN SOLUTION



Stain Resistant



Slip Resistant



Frostproof



Fade Resistant



No Maintenance Required





## A PIONEERING BASE SYSTEM



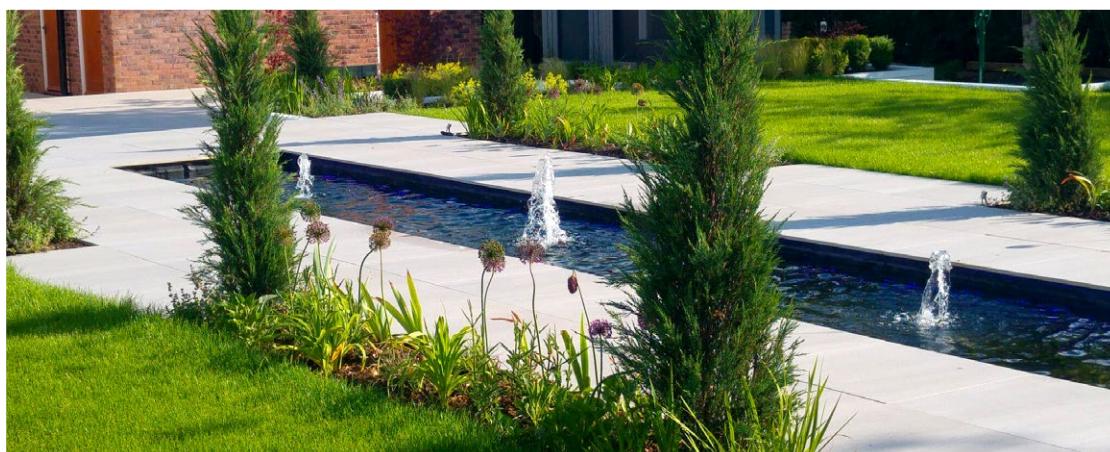


## A PIONEERING BASE SYSTEM

Created using lightweight steel, we've designed a substructure that's made to measure known as iFrame.

The result is a precisely measured foundation that can accommodate modular elements with ease, ready to create an extraordinary outdoor living space.

With this flexibility, the iFrame is one of the most adaptable and environmentally friendly landscaping solutions available.







# INSTALLATION WITH A DIFFERENCE



## FLEXIBLE, FAST & SIMPLE

Our iFrame replaces the labour intensive groundworks process found in traditional landscaping. Placed onto support pads, it is simple and efficient to build without disturbing any existing utilities. Renovating even the most difficult to access spaces is made possible.

It can also be designed for almost any project, creating a contemporary outdoor space with finishes and features to enjoy for years to come.

Once you decide which modular elements you would like, your iFrame is manufactured with points for finishing elements to be directly fixed to, enabling time-efficient and easier installation.





## ACCURATE & EASY INSTALLATION

Whether your ground is flat, sloping, or a combination of both, your iFrame is guaranteed to work in harmony with your landscape, reducing groundworks and saving time.

Factory-made with high-quality manufacturing precision, it creates unrivalled geometric results for a crisp and contemporary finish.

Furthermore, iFrame will not rot, shrink or creep under pressure or dramatic changes in temperature, reducing the need for remedial maintenance.

With a flush to threshold finish, it creates a continuous surface for a seamless indoor to outdoor transition. The result is the feeling of extending your living space to the outdoors.

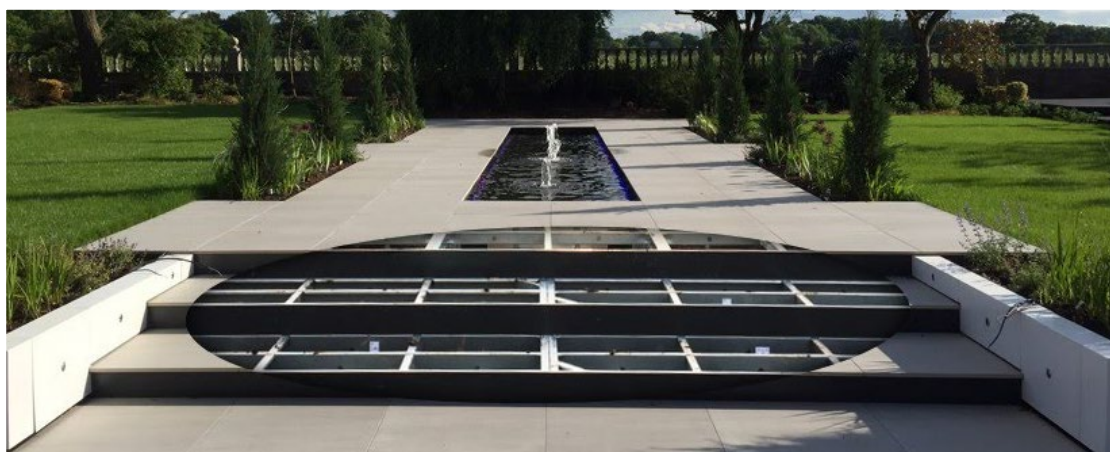




## EFFICIENT DRAINAGE

When it comes to drainage, patios and decking are often laid on concrete or mortar bases which require stormwater and soak away systems to be fitted.

However, thanks to iGarden's engineering, it features a shadow joint which promotes quick and natural drainage after torrential downpours, without the need of additional systems.





# ENVIRONMENTALLY FRIENDLY

Choosing iGarden, your outdoor space is built to last and complies with the '3Rs' of sustainability: reduce, reuse and recycle.

Firstly, we reduce waste to zero by manufacturing made-to-measure prefabricated iFrames. Site waste is also virtually eliminated compared to the industry average wastage of 10% in traditional construction materials.

Secondly, the iFrame is suitable for reuse, meaning units can be dismantled and re-used in a new configuration to redesign your outdoor space - or even transported to a new location for secondhand use.

Thirdly, should you need to dispose of your iGarden you can recycle all of the materials and components we use.

Finally, our products and iFrame are bespoke made in the UK, reducing the carbon footprint of importing materials. A single delivery of light steel frames on a 7.5t vehicle is typically enough to lay a 200m<sup>2</sup> area, so transporting the materials and items required for your garden is greatly reduced.





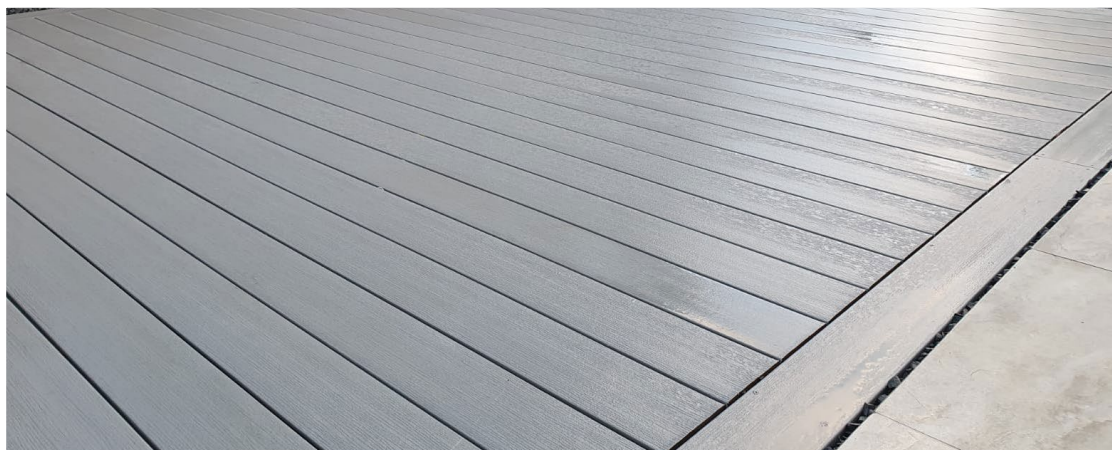
## SURFACE OPTIONS

Porcelain tiles are an attractive and robust flooring solution for all kinds of outdoor spaces. These high-performing outdoor tiles come in a wide variety of colours, styles and effects to create the perfect look.

Laid directly onto the iFrame without the need of adhesives\*, they are ready for immediate use and can be swapped for any repairs or to change your look.

For those who prefer a wooden look, the iFrame also works with composite decking so you get the look you desire with higher performing properties than natural wood.

*\*Edging tiles require adhesive.*





**TAILOR YOUR iGARDEN**  
TO YOUR OWN STYLE





# LIGHTING

We provide lighting options to suit your vision and budget.

Adding a safe, low voltage and low-energy consuming lighting brings the outdoors to life, and creates continuity between your indoor and outdoor space.

All lighting systems come with 3 or 5-year guarantees.

Offering up-lighting, spot lights, wall lights, water lights or general decorative lights creating an ambience that transforms your outdoor experience.



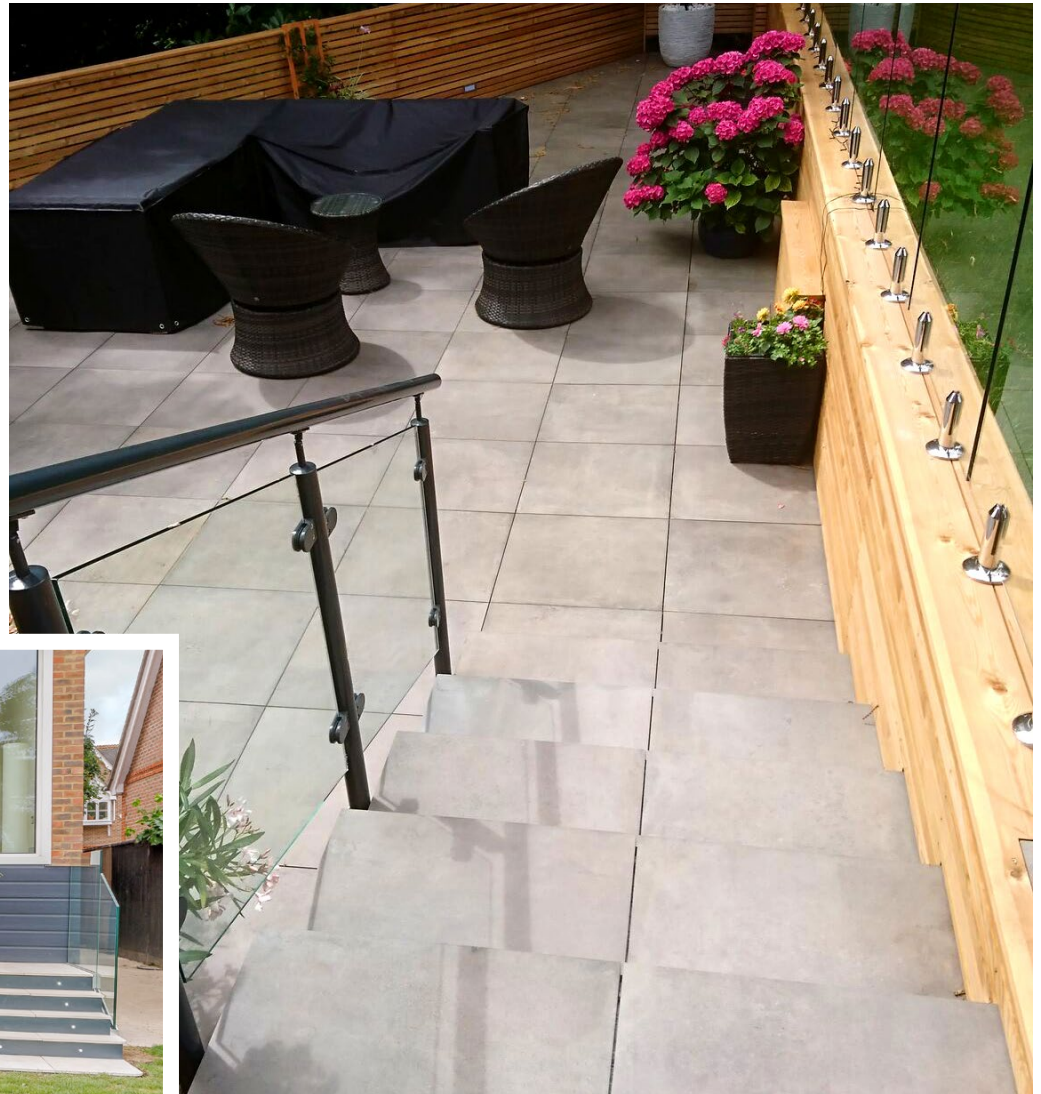


## BALCONIES & LEVELS

Adding levels, balconies and stairs to your iGarden is easy thanks to the iFrame.

If your landscape slopes, incorporating levels, stairs and balconies improves access and maximizes your outdoor space.

Our versatile substructure can also be adapted to feature ramps in your garden, should wheelchair access be required.

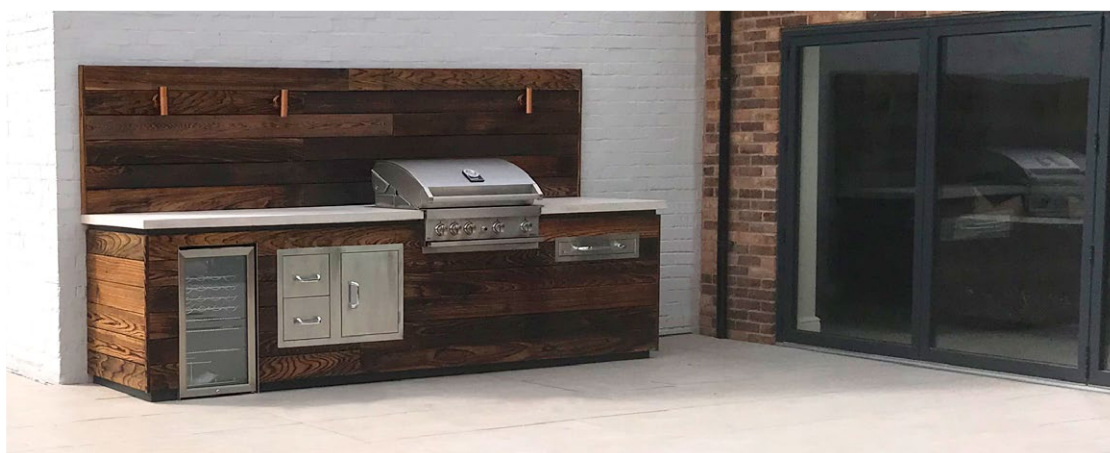




## OUTDOOR KITCHENS

The most luxurious modular element that can be added to the iGarden is an outdoor kitchen. Equipment can be added in modular units, starting with a barbeque, then adding appliances and features such as fridges, sinks, counters, storage cupboards, islands and pizza ovens.

All wires, pipework and services are concealed under the surface for a crisp, contemporary finish.





## OUTDOOR STRUCTURES

For a modern take on conservatory design or extending your property, iGarden is compatible with pergolas, glazed sun rooms or verandas with louvered roofs.

Most are available with wide range of colours and customisable options including lighting, heating and Bluetooth sound systems.

Structures featuring ceiling to floor glazing can be installed using seamless tracks for easy sliding. The result is the ability to easily 'open' the space to outdoors, or to close it to create an enclosed room feeling.





# WONDERWALL

With Wonderwall, you can create a spectacular living wall that's sure to be a show-stopping piece for your interior or exterior design.

Featuring an innovative vertical planter system, you can cover your wall with a rich abundance of bulbs, shrubs, alpinas, bedding grasses, perennials, herbs plus much more to create a beautiful and unique focal point.

Whether you opt for a colourful plant scheme, a loose fern and grass scheme, or even a functional fruit and vegetable scheme, your Wonderwall will transform your space with a visually appealing aesthetic as well as many health and wellbeing benefits.





# FIREPITS

Firepits are enjoyable all year and are perfect for creating a warm ambiance on a cold evening.

With a range of models and fuel types available - whether it's a natural wood, natural gas or propane gas fire pit – there are options to suit all budgets and tastes.





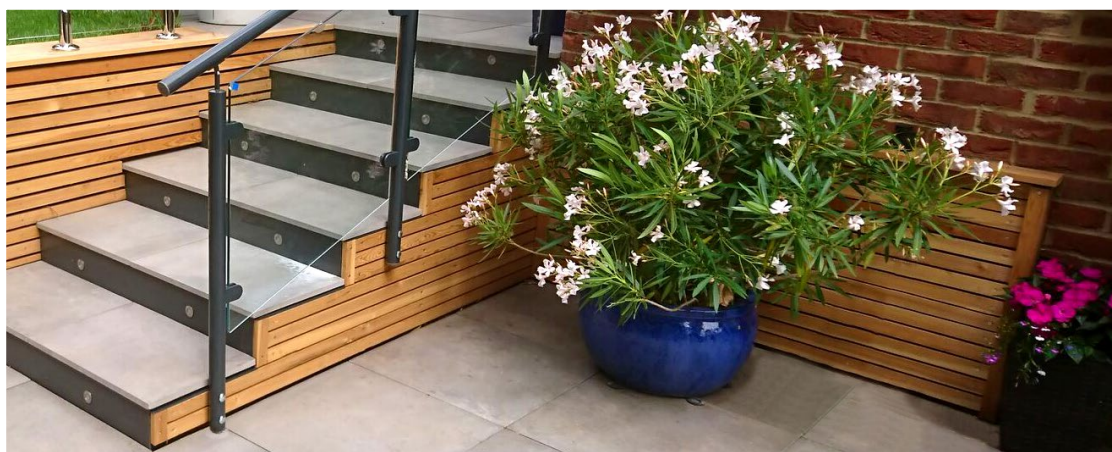
## PLANTERS & TROUGHS

We create bespoke planters which have no limits on size, shape or finish and can be easily moved. Our troughs work well with our built-in seating to provide a backdrop and privacy.

Made from fibreglass, our planters and troughs are:

- Lightweight
- Extremely durable
- Low maintenance

They are available in a matte, satin, gloss, metallic or special effect to complete your iGarden's look.





## WATER FEATURES

A water feature creates an eye-catching focal point by adding sound, texture and movement to your iGarden, helping to create an outdoor space that feels natural and unique.

We have a wide range of water features to fit different locations, including fountains, blades, ponds, streams, or waterfalls.



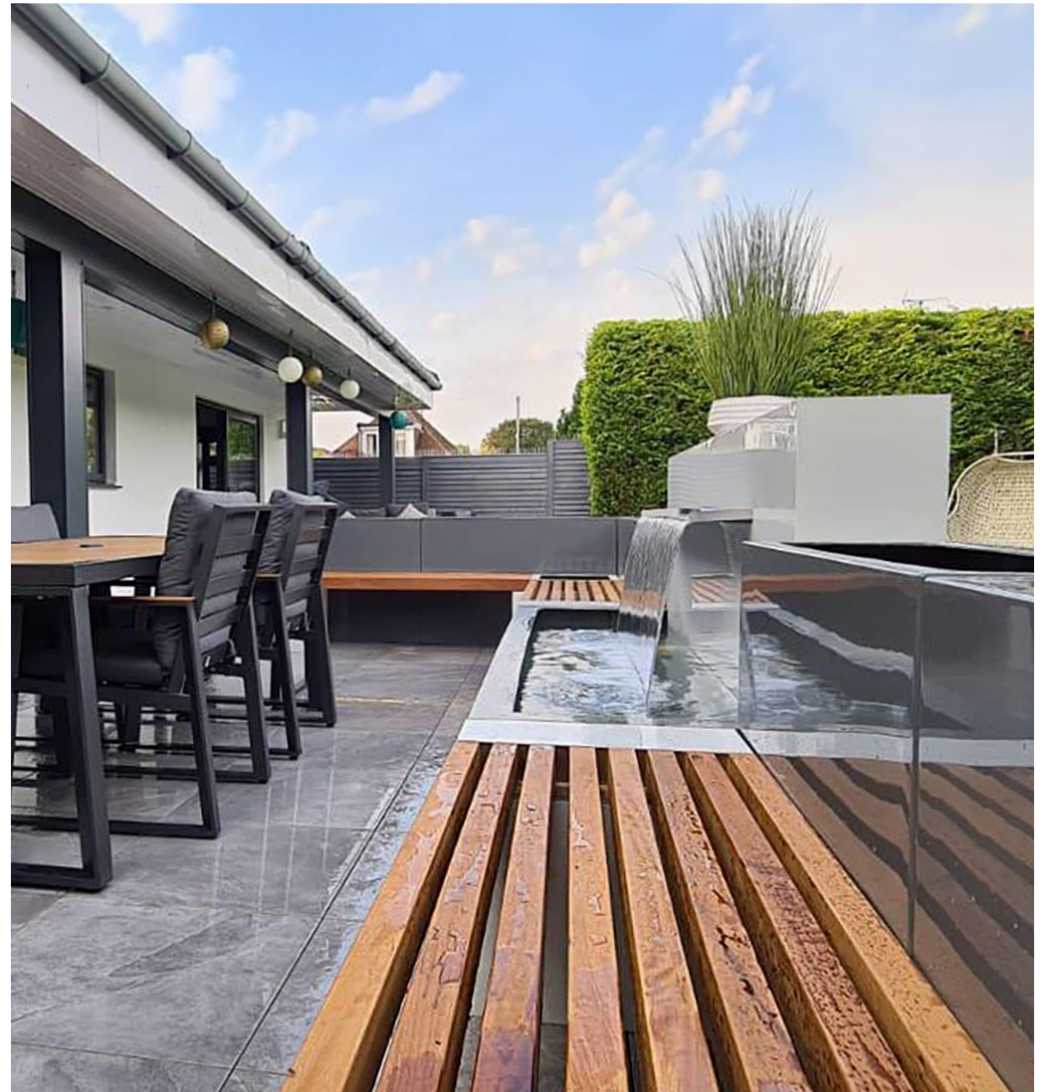




With MiSpace, you can rapidly create a show-stopping entertainment area within your existing outdoor space.

Built upon an iFrame substructure and Porcelain or Composite Deck surface, our range of square or circular seating modules can be completed with a choice of planters, troughs, water features, lighting and Wonderwalls to create focal seating area.

- Install a focal seating area, rather than a full garden renovation
- Fast assembly with minimal disruption
- Enjoy versatility of adding to your MiSpace later on
- No groundworks or heavy machinery required
- Minimal access required, we can carry your MiSpace on site by hand



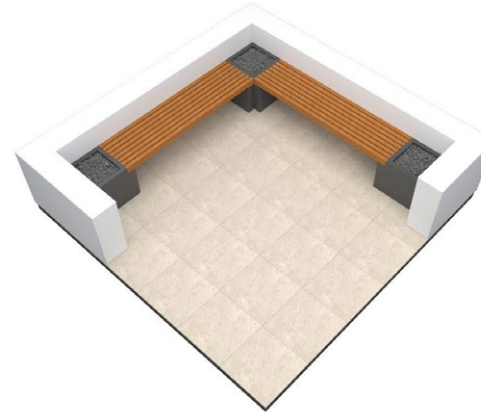




## SEATING CONFIGURATIONS

We offer a choice of bench, circular or square seating modules that have been exclusively designed for MiSpace.

Manufactured in the UK, each component is made using fibreglass for its lightweight and weatherproof properties, and can be completed with Iroko benches.



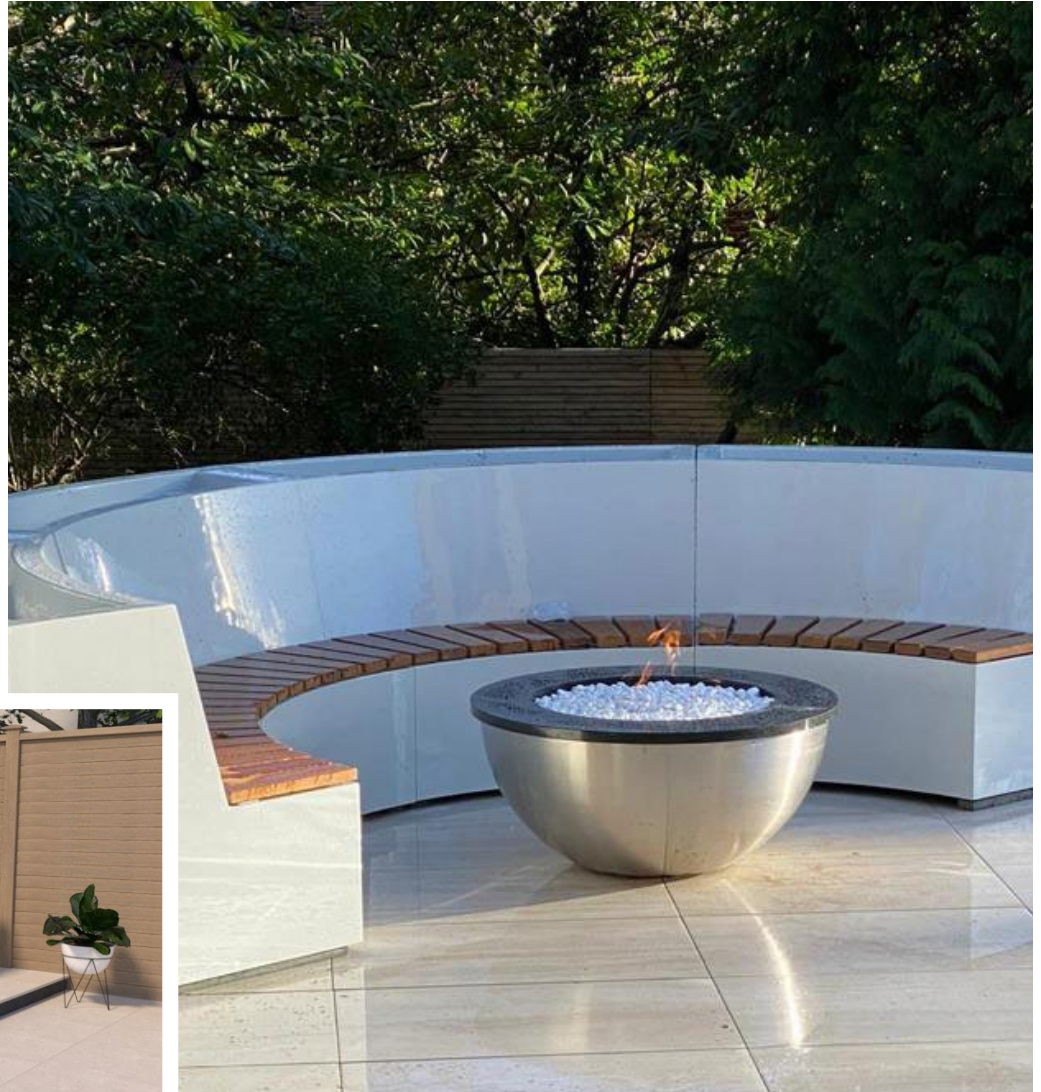




## SEATING LEVELS

Assembled on our versatile iFrame substructure, MiSpace can be installed at a variety of levels:

- For minimal-disruption and our fastest assembly, opt for a ground-level installation.
- For a commanding focal point, opt for a raised MiSpace complete with steps and balustrades.
- For a dramatic transformation, opt for a sunken MiSpace for an intimate and unique seating zone.\*



*\*Please note, groundworks required.*



# HOW IT WORKS

## Let's create the perfect iGarden

Whether you have a clear vision or you want to use our experts for inspiration, together we can create the garden of your dreams.



### 1. Initial Consultation

We'll have an initial discussion about your objectives and ask for rough measurements of your garden. We'll suggest some initial ideas with indicative costs to ensure we're on budget. If you wish to proceed, a technical survey goes ahead.



### 2. Design

Once the survey is completed, working drawings for your new garden can be created. We'll offer our expert advice on how to maximise the style and function of your garden. Accurate costs are provided for your approval.



### 3. Manufacture

Once the drawings are completed and quote is approved, we submit the specifications to our manufacturers who will create your bespoke iFrame and modular elements.



### 4. Installation

Once all parts have been manufactured, the iFrame will arrive in parts ready to be carried onto site, and assembled on support pads in-situ. Your choice of surface is quickly laid too.



### 5. Finishing Touches

Once your iFrame is in place, it's ready for your modular elements to be fitted. Any pipes and cables are concealed under the surface leaving your modular elements to be the focal point. Once fixtures and fittings are in place, your iGarden is ready to be dressed with greenery, furniture and any final touches.



A photograph of a modern garden featuring a brick house with a red-tiled roof. The garden includes a paved patio area with outdoor furniture, a large potted tree, and a raised bed with purple flowers. The foreground shows a patch of artificial grass. A black text box in the upper right corner contains the text "YOUR LOW MAINTENANCE iGARDEN IS READY TO ENJOY!".

**YOUR LOW MAINTENANCE**  
iGARDEN IS READY TO ENJOY!





Have a project you'd like to discuss?  
Request a design consultation today:

Wiltshire & Cotswolds (HQ)

- 0333 577 1553

Bournemouth

- 01202 986 960

Bristol

- 0117 239 0499

Leatherhead

- 01483 385 993

St Albans

- 0172 753 0151

Cardiff

- 0292 115 1038

Email us on

- [hello@igardenvision.co.uk](mailto:hello@igardenvision.co.uk)

