

Greater Richmond Continuum of Care (GRCoC): Collective Impact to Solve Homelessness



Common agenda: the GRCoC works together to ensure that everyone has a safe place to call home.



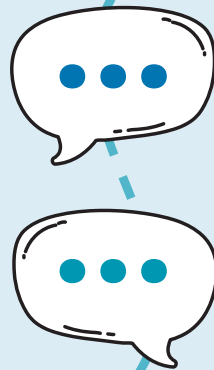
Mutually reinforcing activities: GRCoC partners coordinate services and come together to allocate and maximize limited resources.



Backbone support: Homeward provides coalition support and subject matter expertise so that the GRCoC can deliver impactful services, advance person-centered policies, mobilize funding, and build community will to solve homelessness.



Shared measurement: GRCoC partners use a shared database known as the Homeward Community Information System (HCIS) to record and track community needs and outcomes.



Continuous communication: The GRCoC website and community list-serves facilitate peer exchange, information sharing, and coalition building.

www.endhomelessnessrva.org

www.homewardva.org

For more information on Collective Impact, please visit: https://ssir.org/articles/entry/collective_impact. For an update on Homeward's tenure as a backbone organization, please see https://ssir.org/articles/entry/second_generation_collective_impact.