



# Five Year Master Plan

2018-2022



*This page intentionally left blank.*

# Table of Contents

---



<b>SECTION 1: INTRODUCTION .....</b>	<b>1</b>
<b>SECTION 2: THE COMMUNITY .....</b>	<b>5</b>
<b>SECTION 3: PLAN DEVELOPMENT .....</b>	<b>25</b>
<b>SECTION 4: PARK SYSTEM INVENTORY .....</b>	<b>31</b>
<b>SECTION 5: NEEDS ANALYSIS .....</b>	<b>55</b>
<b>SECTION 6: IMPLEMENTATION.....</b>	<b>65</b>

*This page intentionally left blank.*

# Acknowledgments

This plan was prepared with the assistance, direction, and cooperation of the City of Greencastle Board of Park Commissioners, the Indiana Department of Natural Resources, and the citizens of the City of Greencastle.

## **PREPARED FOR:**

Greencastle Parks and Recreation Department

## **CONTACT INFORMATION:**

Rod Weinschenk, Parks & Recreation Director  
Greencastle Parks and Recreation Department  
405 South Bloomington Street  
Greencastle, IN 46135  
(765) 653-3395 (phone)

## **BOARD OF PARK COMMISSIONERS**

Tim Trigg – President

Dr. John Hennette, DDS – Vice President

Cathy Merrell – Secretary/Treasurer

Beva Miller – Member

Michael Scott – Ex-Officio, Greencastle Community School Corporation

David Taylor – Ex-Officio, Putnam County Public Library

## **MAYOR**

Bill Dory

## **PREPARED BY:**



HWC Engineering  
135 N. Pennsylvania Street, Suite 2800  
Indianapolis, IN 46204  
(317) 347-3663  
January 2018

*This page intentionally left blank.*

# INTRODUCTION

## MISSION STATEMENT

*“The mission of the Greencastle Parks & Recreation Department is to provide wholesome recreational opportunities, which reflect the interests and needs of all people in the Greencastle community; and to plan, acquire, develop and maintain quality attractive parks and facilities that will enhance the City of Greencastle, Indiana.”*

## PURPOSE

The purpose of this Five-Year Master Plan for Parks, Recreation and Open Spaces (Parks Plan) is to describe how the Greencastle Parks & Recreation Department anticipates carrying out its Mission Statement. The Parks Plan provides a decision-making framework for providing recreation programs, municipal parks and facilities that are accessible to the entire community, which meets the needs of a growing population, and which promotes their use and appreciation over the next five-years. The Parks Plan provides an efficient and logical system for the development of future parks & recreation opportunities for citizens and visitors of the Greencastle community. As the community continues to grow and people become more aware of the benefits that parks, open spaces, and recreational programs offer, demand will continue to grow. In the globally competitive 21st Century economy a robust parks and recreation system is an imperative investment for any community wishing to remain relevant

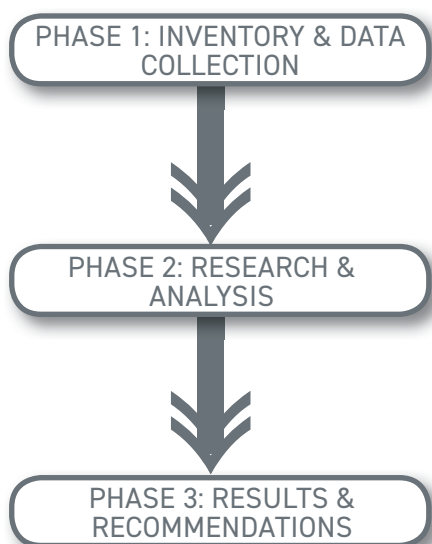
to peer communities. Park facilities, open space, and recreational offerings are now considered a basic function of civic infrastructure which allow residents opportunities to grow and thrive physically, mentally, and socially. This Parks Plan outlines the ideas and opportunities which will help the Greencastle Parks and Recreation Department offer these opportunities for the next five years, and beyond.

Input of members from the local community and its leaders is the basis for this plan. Implementation of this plan will have maximum benefit for residents and visitors of the Greencastle community only through continued and robust support, cooperation, and guidance of the community.



## PLAN METHODOLOGY

This plan was developed through an extensive process of property inventory, data collection, research, park staff interviews, and public input. The results of this process informed and shaped the outcomes of the recommendations of the plan. The information collected during this process is also summarized within the content of the plan to help inform future decisions which will arise from unknown future external influences and changes in community needs.



## DEFINITION AND MAP OF THE PLANNING AREA

To plan for Greencastle's recreational needs, it is necessary to describe the community's physical and demographic setting. Many of the area's physical features, which include location, transportation corridors, natural features, and the built environment do not change a great deal from year to year. The map to the right and provides an overview of the physical location of the community and also many of the major features which help shape and impact parks and recreational uses regionally.

The Greencastle Parks & Recreation Department's planning area includes not only the incorporated boundaries of the City of Greencastle, but also that of Greencastle Township. The city's planning area extends approximately 2-miles outside the Greencastle municipal limits. Putnam County does not currently have an operating park board, so the City of Greencastle Parks & Recreation Department provides those services to the citizens of the Greater Greencastle area which lay outside its jurisdictional area. Select additional regional resources have been factored in to the overall plan recommendations if they were deemed to have an impact on possible facility use or demand. Those regional facilities are indicated on the overall Greencastle Park System Map found further in this plan.

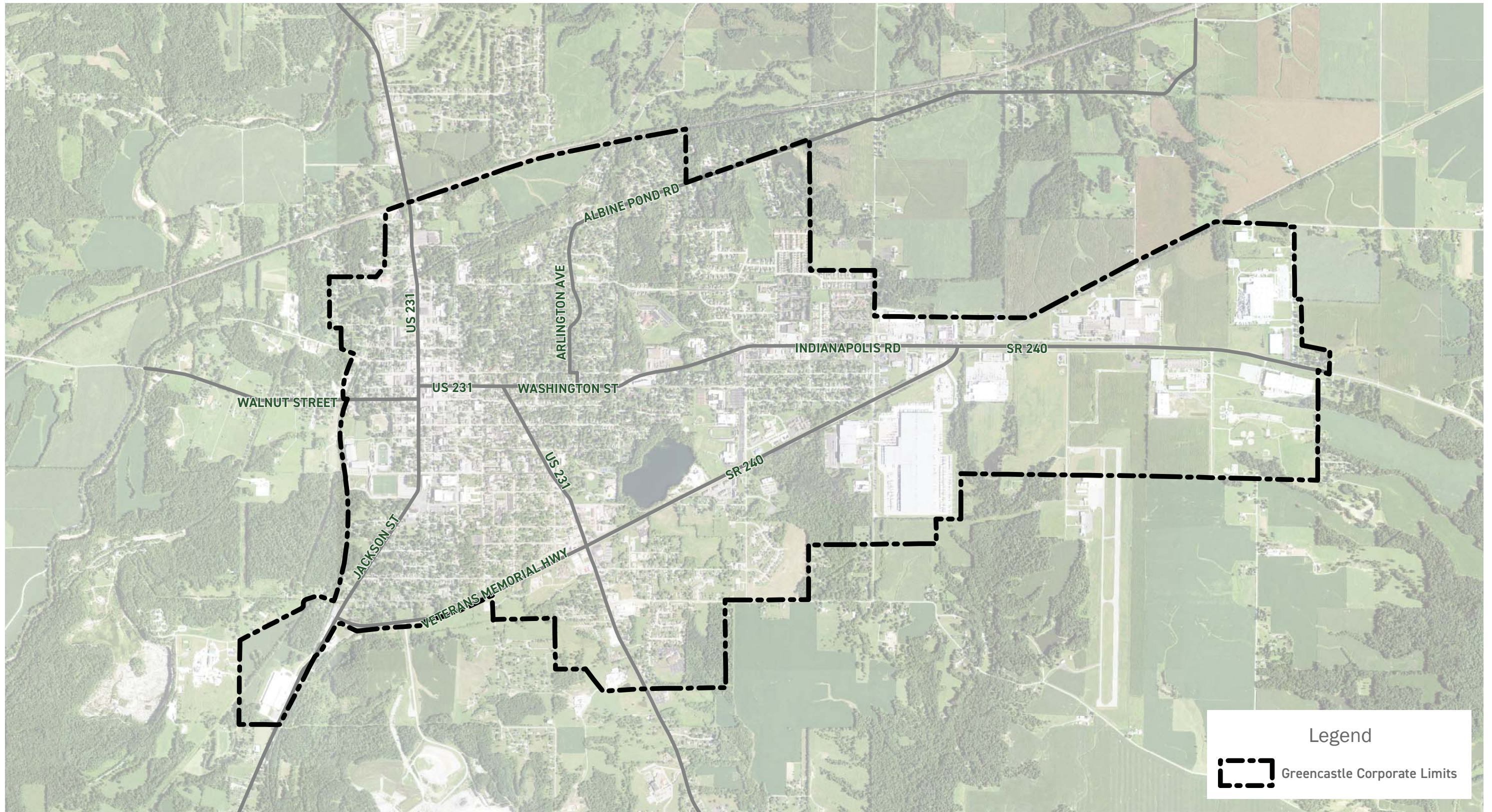
## LOCATION OF GREENCASTLE

The City of Greencastle is located in south-central Putnam County, Indiana, just an hour west of Indianapolis and an hour east of the Indiana/Illinois State border and the City of Terre Haute, Indiana. Greencastle is easily accessible via North US Highway 231 from the heavily traveled I-70 corridor, a major national thoroughfare (see Figure 2) (update Figure 2). The US Highway 40 corridor also yields an active east/west highway route through the City, and provides important connections to surrounding communities. The movement of people and goods within these corridors has led to a moderate degree of growth in the community, predominately areas of light industry and institutional development on the east side. The surrounding regional communities are based primarily on agricultural economies which makes Greencastle an important regional commercial and social activity center.





Figure 4.2: Greencastle Parks Planning Area Map





*Page Left Intentionally Blank*

# THE COMMUNITY

## OVERVIEW

This section provides an overview of community demographics and features that influence the Park and Recreation Master Plan for Greencastle. This section looks at broad demographic trends which can help indicate specific needs for the community. Demographic information presented in this section includes population trends, age, housing market, households, education, and income. This section also looks at manmade, cultural, and historic features and natural features.

## DEMOGRAPHICS

Demographics matter for a parks and recreation master plan because, "When planning for parks and recreation, you need to know about people who use them to better understand the recreation issues facing your community." - (IDNR: Outdoor Rec. 1999 Master Plan Guide).

## DEMOGRAPHICS SNAPSHOT

### POPULATION DATA

The City's population is a figure that directly influences the level of recreational opportunities that should be available. The age composition, education levels, and incomes for the local populace are also important factors that local parks and recreation advocates need to be aware of when compiling their plan goals and objectives. In conjunction with demographic data, the geographic distribution of the population helps identify where recreation opportunities should be placed to complement the influences augmented by the community.

In 2010, Greencastle's population was 10,326 persons. In July of 2016 the U.S. Census Bureau estimated the city's population to 10,508 persons. This is a 1.9% increase for the period, or an annualized growth rate of 0.32%. The median age in 2010 was 27.4 years and is now estimated to be 25.3 years (2015 U.S. Census Data). This means over the past 7 years the community of Greencastle has been getting younger.



POPULATION  
INCREASE  
SINCE 2010

3%

### MEDIAN AGE

INDIANA: 35.2 YEARS

GREENCASTLE: 25.3 YEARS

MEDIAN INCOME  
\$45,315

### OCCUPIED HOUSING

2010:

3,659 units

2015:

2,999 units



COMMUTE VIA  
PRIVATE VEHICLE  
(ALONE OR CARPOOLING)

74.9%

WORK FROM HOME

1.3%

MEAN TRAVEL TIME  
TO WORK (MINUTES)



17.8



## POPULATION FORECASTS

Population projections are necessary to determine whether adequate recreational facilities exist to serve the area in the future, or whether additional amenities and services will be required. The economic impact of an increased population indicates that more residents will require recreation facilities and services, leading to a need for new improvements to the park system. Overall, the recreational service area of the Greencastle Parks and Recreation Department is expected to increase over the next 5 years, with an ESRI annualized growth prediction of 0.35%, the city's population can be expected to reach approximately 10,730 people by the end of the planning period.

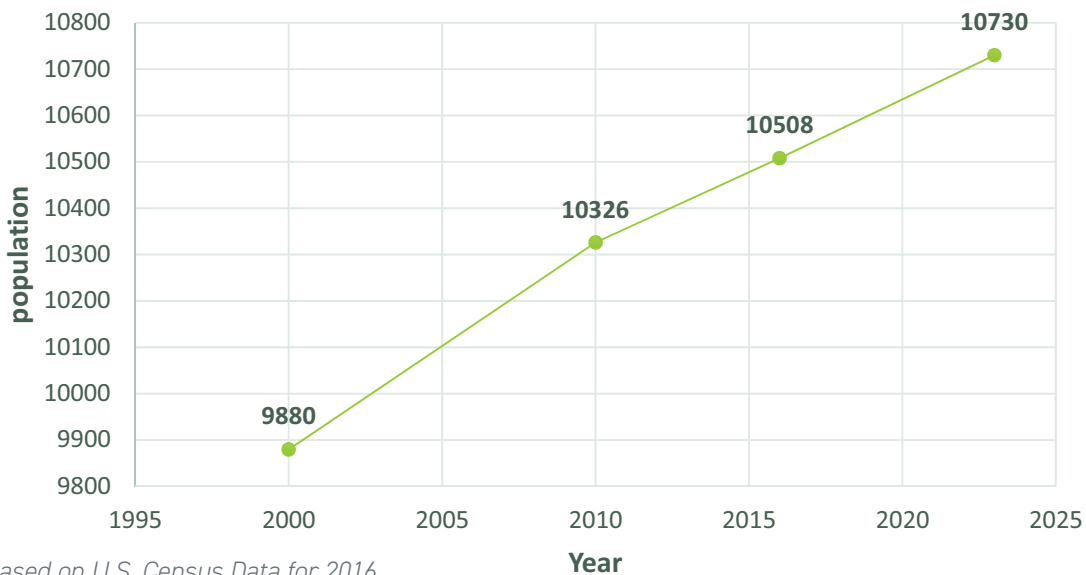
Over the same period, Putnam County's population has been estimated to have decreased by 1.4% to 37,436 residents. This means that while regional growth may have slowed, the demand for parks and recreation facilities within the city can be expected to continue to grow during the current planning period.

## AGE

Everyone belongs to a particular stage of life at one point in time. Each stage of life tends to lead to a different set of needs and desires than the preceding stage. The age demographic analysis assists greatly in determining projected and future growth in the community and an associated stage of recreational activity needs. Statistics from Statisticatlas.com indicate that within the City's community make-up, the largest age group, or nearly 31% of the population, is comprised of the 18-24 year olds and more than 54% of total population is under the age of 30. The student population at DePauw University proportionally accounts for this age category to be larger than that of any other.

Greencastle's current median age of 25.4 years is also significantly lower than the State of Indiana median age of 37.5 years by more than a decade. This is an important demographic factor to note as age is one of the most important indicators for the types of facilities and programming demand. A younger demographic can indicate a greater need for more active recreational facilities and programs and also a greater desire for facilities and programs aimed at young families and children.

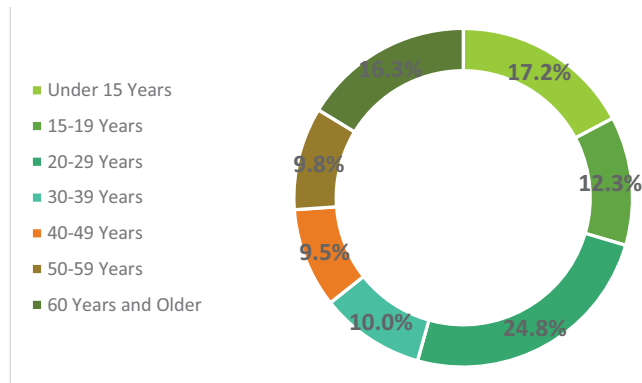
Figure 2.1: Population Data



Based on U.S. Census Data for 2016



**Figure 2.2: Age Data**



Based on U.S. Census Data for 2015

Generational shifts, however, will continue to be an important factor in Greencastle just as they are impacting Indiana and the entire nation. Currently nearly 20% of Greencastle’s population is aged 55 or older, indicating that current and future park improvements should be balanced between both youth oriented activities, and retiree aged recreational user group needs.

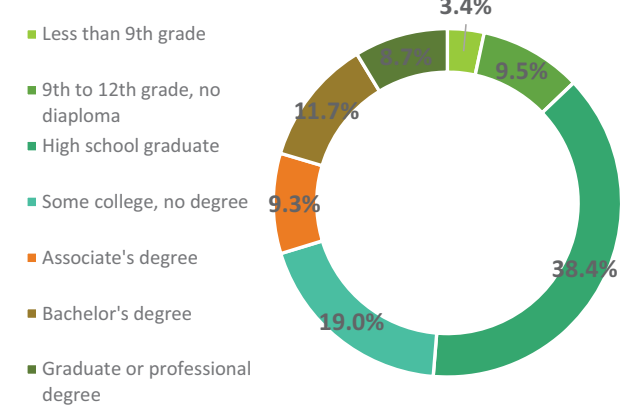
**ETHNICITY**

Below is a summary of the ethnic distribution in Greencastle based on 2015 U.S Census Data:

- 92.4% is white
- 2.1% is black or African American
- 2.8% is Asian
- 1.7% is Hispanic or Latino.

Ethnic distribution relates closely to State of Indiana averages and does not indicate a specific need for specialized cultural facilities. However, additional research and polling would be beneficial to help identify ways that the Greencastle Parks and Recreation Department could help celebrate the ethnic diversity of the broader Greencastle community.

**Figure 2.3: Education Data**



Based on U.S. Census Data for 2015

**EDUCATION**

The level of education attained by individuals within the Greencastle area can have a significant impact upon his or her decision-making habits. Specifically, higher levels of education typically provide opportunities for the introduction of a wider variety of recreational activities, presented by academic and athletic / leisure programs. As the education level increases, so does exposure, effectively influencing a more diverse demand for a variety in recreational services and the immediate interests of the community. Further, level of education is closely associated with level of income. In general, the higher a person’s level education attainment, the greater their earning power. An analysis of educational background, along with income earning capacity, will provide insight into which recreational services might be familiar or affordable to residents of the area.

According to current data from statisticalatlas.com, over 85% of the population has a high school diploma or higher with nearly 32% of the population holding a bachelor’s degree or higher. moving occupations (24.5%)

While Greencastle's educational attainment is largely in line with State of Indiana averages, it is important to note that the presence of DePauw University within the community may have an impact on the types of facilities and programming desired by the community. Having exposure to a broader availability of programs through the university means that the Greencastle Parks and Recreation Department can focus its programming and facility efforts in areas that compliment, but don't compete with, programs typically offered by the university.

### HOUSEHOLDS

Different types of households can place different demands on recreational facilities within a service area. A high percentage of single parent households might indicate a need for after-school recreational programming, or a retirement household community will likely require a high percentage of ADA accessible features, passive recreational facilities and programming.

Greencastle holds a slightly smaller percentage of family households with children than the State of Indiana with a slightly larger percentage of those being single parent households. Much of this information indicates a probable need for the community to focus not only on traditional recreational activities but also on amenities and programs that meet the interests of an aging, non-traditional adult population in conjunction with those needs typically sought by children of single-parent headed households.

### UNEMPLOYMENT

Greencastle is estimated to have a current average unemployment rate of 5.7% which is lower than the state of Indiana average at 6.9%. Greencastle's recreational facilities and programming provide physical and psychological benefits for all people but can be particularly important for the unemployed by providing social

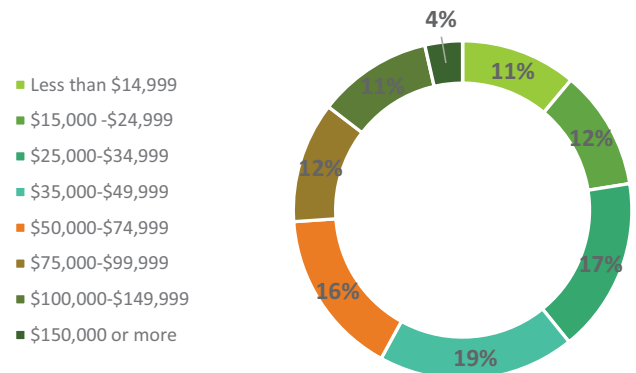
structure through structured programming and informal networking interactions with other community members.

### INCOME

A moderately influential factor in determining recreational patterns is income and cost of living. The money a household has left over after fixed expenditures, such as housing, utilities, taxes, and transportation, is available for spending on "discretionary" items such as entertainment and recreational activities.

Greencastle's current estimated median household income is \$46,490 which is significantly lower than the State of Indiana's median of \$50,532. However, the median income in Greencastle has seen significant and steady increases since 2000. Current estimated cost of living in Greencastle, as found at Sperling's Best Places website ([www.bestplaces.net](http://www.bestplaces.net)), is 85.40 meaning it is less costly to live in Greencastle than it is in comparative communities across the country. The city's cost of living index is nearly equal to the State of Indiana average cost of living index of 85.3, meaning more of the city's residents are likely to depend on the lower cost public facilities and services typically associated with the parks and recreation system for their regular entertainment activities.

Figure 2.4: Income Data



Based on U.S. Census Data for 2015



## DEMOGRAPHIC SUMMARY

The population of Greencastle has experienced a steady increase over the past 10-years and is anticipated to increase for the duration of this Master Plan. Recreational activities should be targeted to emphasize the predominant age categories of young children, empty nesters and retirees, with a special emphasis on children of single-parent headed households, non-traditional family needs, and those of the single-elderly population. Both traditional and non-traditional recreation activities and programs should be encouraged within the parks and recreation system. The overall demographic trends underscore the importance that recreation will have toward the future efforts of the City to enhance the quality of life in the Greencastle area, in providing a community recreation system that should meet a wide array of user needs.

## MAN-MADE, HISTORICAL AND CULTURAL FEATURES

The City of Greencastle has evolved since its establishment in the early 1800's into a desirable and bustling community. Capitalizing on its natural features and the Putnam County Seat, Greencastle has earned the prestigious recognition as One of the Best 100 Small Towns in America, an All-American City, a Tree City, U.S.A. and the Indiana Green City of the Year three years in a row (2008, 2009 and 2010). The entire downtown district has also been placed on the National Register of Historic Places due to the existence of many significant architectural and cultural resources. The city was also named one of 2 Indiana Stellar Communities in 2011.

A wide variety of community resources exist in Greencastle, including:

- The Putnam County Public Library, located in downtown Greencastle;
- The Putnam County Airport, located on the east side;
- The Putnam County Hospital, located south of town;
- Putnam County Operation Life, the local ambulance service;
- Several community churches;
- DePauw University, a prestigious private college housing approximately 2,400 students;
- Ivy Tech Community College;
- The Greencastle Community School Corporation consisting of Deer Meadow Primary (K-2 grades), Ridpath Primary (K-2 grades), Tzouanakis Intermediate (3-5 grades), Greencastle Middle (6-8 grades) and the Greencastle High (9-12 grades) Schools;
- And a few alternative schools such as New Pathways Preschool (Preschool-K) and Peace Lutheran (Preschool-5 grades).



Governed by a Mayor and City Council, the Greencastle community boasts municipal facilities that house the services of Administration, Public Works, Police, Fire, Water and Waste Treatment, Cemetery, and Parks and Recreation personnel. Public parks within the City of Greencastle include Robe-Ann Park, Ballard Family Park, Park, Maple Berry Park, Mary Rogers Field Park, Big Walnut Community Park, Big Walnut Sports Park and the People Pathways trail system.

Additional recreational resources in the City, beyond those provided at municipal and educational institutions, include:

- Windy Hill Country Club and Old Hickory Golf Course both private 9-hole golf courses;
- the Putnam County 4-H Fairgrounds;
- the Putnam County Playhouse;
- the Putnam County Museum;
- Putnam Park Road Course, located southeast of Greencastle;
- and five State of Indiana recreational parks located within 40-miles of Greencastle.

Strip commercial and light industrial facilities are predominantly located on the east and south sides of the City along the major transportation thoroughfares. The City's downtown square, home to the Putnam County Courthouse, is located in the northwest central portion of the study area. Downtown provides several retail shops, service businesses, and community service offices. A variety of housing, consisting largely of single-family structures dating to the early 20th Century, are located throughout the City in a traditional grid pattern layout. More recent residential subdivisions are located on the periphery of the community.

## SIDEWALK CONNECTIVITY

The City of Greencastle is fortunate that a citizen's advisory group was formed almost 22 years ago to help address and promote the connectivity of the city's important amenities with both pedestrian and bicycle paths. Called People Pathways and under the leadership of Joy Marley, this group has been very active since its inception. People Pathways uses a combination of concrete sidewalks, asphalt trails, shared use lanes, and rail-to-trail opportunities to promote the use of alternate forms of transportation for area citizens to move throughout the community. Maps of these transportation corridors are available throughout town and key points along each route (see Figure 4.2).

Because of these efforts, a DePauw University student can now walk or ride a shared bicycle from campus and follow the People Pathway signage to many businesses in town. These signs lead to the local Kroger Food Stores, many downtown restaurants and those on the east end of town, and to Greencastle's Wal-Mart. Many of the municipal parks like Robe-Ann, Jaycee, Calbert Way, Maple Berry, Micaela Cancilla and Big Walnut Sports Park can be reached by one of these routes. Calbert Way Park serves as the trailhead to the Greencastle-to-Fillmore leg of the Vandalia Trail, which ties to Plainfield, Indiana. This group is now looking at traveling westward to Brazil and Terre Haute opening another two miles worth of trails.

The City of Greencastle is also addressing American with Disabilities Act (ADA) concerns with local sidewalk pedestrian ramps. Under the current administration, the City of Greencastle has made an aggressive effort to install ADA ramps and to repair unsafe sections of its sidewalks that present impediments to persons with disabilities and the public at large. The City has 766 total sections of sidewalk that require ADA Ramps.





The following chart indicates the ramps and square footage of sidewalk that have been installed since 2005 by the City's Department of Public Works and Safety from its annual budget. The City of Greencastle anticipates completing its ADA ramp construction during the 2018 sidewalk construction project.

Year	Footage	ADA ramps
Pre 2005	-	99
2005	1,283	3
2006	1,843	7
2007	2,724	16
2008	1,661	21
2009	2,769	14
2010	3,431	43
2011	4,826	52
2012	4,099	54
2013	4,060	67
2014	4,505	48
2015	4,476	48
2016	4,138.5	71
2017	5,850	55
Misc**	-	111
<b>Total Completed</b>		<b>709</b>
<b>Remaining to be Complete as of January 1, 2018</b>		<b>57</b>

\*\*There were 111 additional ramps installed as part of larger road reconstruction projects.

## MAPLE BERRY PARK BROWNFIELD PROJECT

The Maple Berry Park Brownfield Project came from the construction of the Maple Berry Park Project that started in 2004 where the city addressed many safety concerns with the intersections of Maple, Broadway, Berry and Sycamore Streets on the south side of Greencastle. Development of the east parcel began and during soil testing petroleum residual was discovered which required remediation. The project was diverted to the west parcel which ended with the development of Maple Berry Park (west). A Brownfield Assessment was conducted in 2007 and completed in 2008.

In 2017, the eastern-most portion of the Maple Berry Park purchase was developed and dedicated in the name of Micaela Cancilla Park after a life-long resident to the area. Located directly behind Mama Nunz Restaurant, where Micaela Cancilla worked and greeted patrons in her family's business. Micaela Cancilla Park includes a small piece of playground equipment to serve the neighborhood, a picnic table and trees. This spring, 2018, an additional climbing structure (Harry the Hippo) and two park benches with shade structures will be installed within the playground.



## NATURAL FEATURES

There is a limited number of open spaces with park potential within the corporate limits of the City of Greencastle. A number of small and privately-owned lots of land are scattered throughout the city which could be used for smaller neighborhood recreation areas.

As indicated on the accompanying Natural Features Map (Figure 2.1), Greencastle's natural environment is largely comprised of predominantly rolling terrain, mixed with some sloping land. The Big Walnut Creek Watershed area traverses the northwest to southwest quadrants of the community. A U.S. Geological Survey reveals that the ravines etched along the Creek have, for the most part, curtailed development in that vicinity yielding a topography that contains woods and wetlands mixed with some level plots of vacant land, providing an important drainage management role for the community. Some of the small and flat parcels may provide adequate access points for future expansion to responsibly provide opportunities to actively integrate the creek's natural features into the community's park and recreation system.

## EMERALD ASH BORER

The effects of the Emerald Ash Borer on the entire community is unknown but the Emerald Ash Borer has changed the profile of the municipal parks system, especially that of Robe-Ann Park. In 2016, ten ash trees were removed with six more removed in 2017. The parks and recreation department has estimated another four will need to be removed in 2018. The first tree was removed because of its location right across the drive from the parks and recreation administrative building. The tree had been monitored for three years prior to its removal. The tree began to show stress by dropping its leaves earlier than the rest, progressing to

*Jaycee Park natural setting.*



*Source: HWC Engineering*

curled branch tips, white bark splotches, and finally not leafing out which precipitated its removal in 2016. Out of those ten ash trees removed in 2016 there was a seventeen year old ash tree that was apart of the first planting by the current parks superintendent. The D-shaped exit holes were very prominent in this tree and a specimen from this tree still sets outside the City Planner's office located in city hall. Each year, the parks and recreation department plants 6-12 trees throughout the municipal parks system to replace those removed each year.

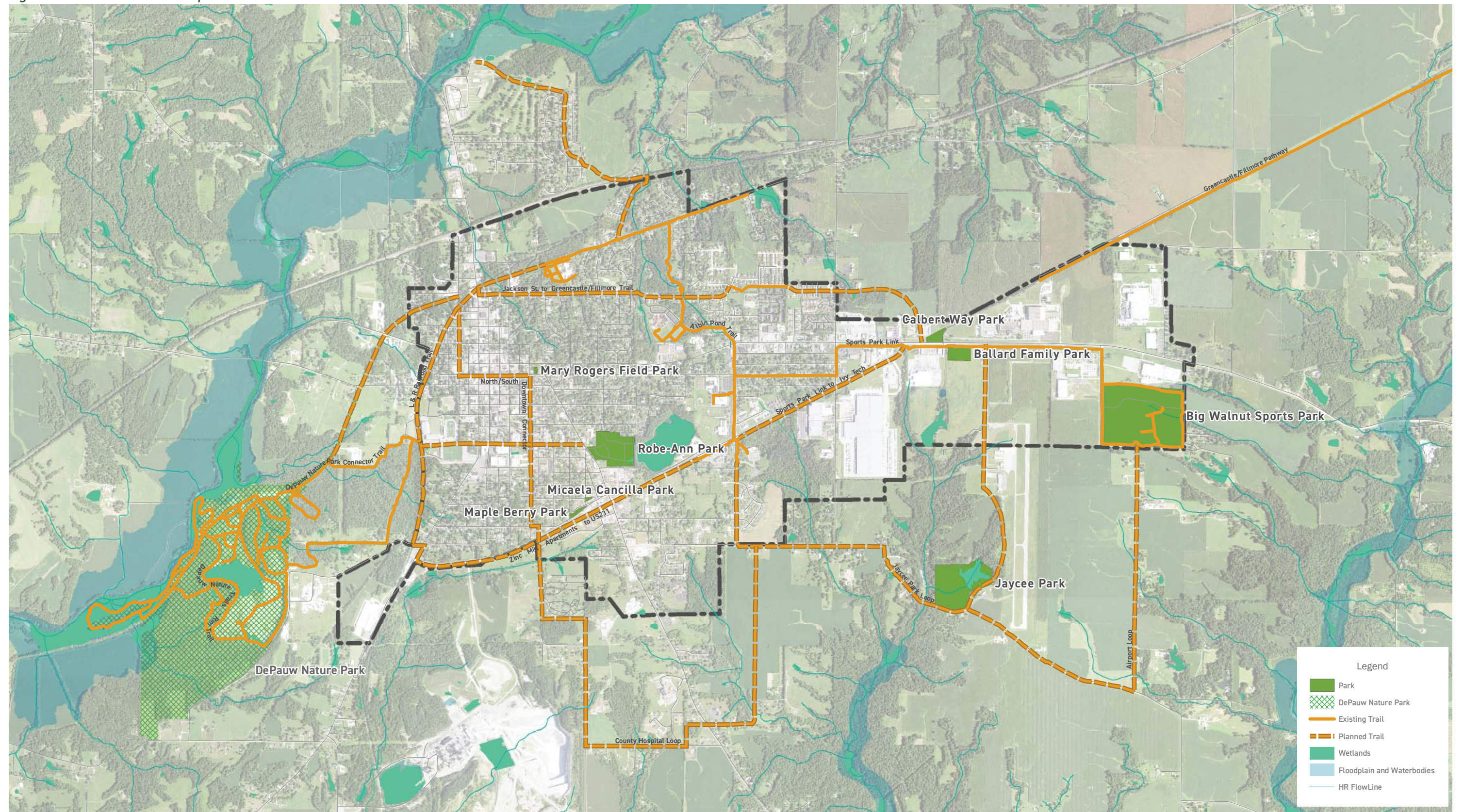
## INTERNAL PARK SPACE

The City of Greencastle has a few areas within the municipal city limits that have been identified by the parks & recreation department as potential neighborhood or pocket parks. The city is expecting a donation of a 1-acre tract of land already referred to as "Walter & Eleanor Ballard Family Park". Located just east of the eastern-most entrance to the Walmart parking lot, and along with Calbert Way Park located kitty-corner across state highway 240, would make a very aesthetic entryway to the City of Greencastle. A tentative design for these two parks is included in this 5-year master plan. Development of this parcel will wait for the opportunity to submit for funding through the Land & Water Conservation Fund, with the donation of land being used as a





Figure 2.6: Natural Features Map





*Page Left Intentionally Blank*

match.

In the northeast corner of town lies a parcel of land centrally located between three retirement villages and a low-income apartment complex. Once a golf course, this parcel cannot be developed because it sets on a shallow bed of limestone. Because of its proximity to the homes in the surrounding housing additions and the inability to blast, this piece of land could be used for a new parks and recreation facilities such as greenspace, trees, or a perimeter walking path with exercise equipment. With the popularity of pickle ball at Robe-Ann Park and the fact that it caters to the older population, a pickle ball facility could be considered for the property as well.

Another targeted spot is the home of a farmer's market located at the corner of North Jackson Street (Highway 231 North) and Shadowlawn Drive. This parcel could serve as a northern entryway park and due to its vicinity to the CSX Railroad crossing, could lend itself to some form of railway attraction. A small visitor's center within the shape or décor of a railroad depot would be appropriate.

## OTHER OPPORTUNITIES

The City is also home to two facilities that have great potential and have seen development. These include DePauw University's Nature Park, located on the west side of town, and Big Walnut Sports Park on the east side of the community. DePauw University Nature Park exists on the site of a former rock quarry. The university has developed this site into a large, publicly usable, nature park complete with a visitor's center, indoor and outdoor classrooms, restrooms, primitive campsites, miles of walking trails, and most recently the Janet Prindle Institute for Ethics. Big Walnut Sports Park, which the City of Greencastle recently took ownership of, is the home of several of Greencastle's volunteer

youth sports programs.

The department has recently been approached by citizens regarding the development of a park in a vacant lot located in the northeast section of town. This parcel of land is centrally located between a low-income apartment complex and three retirement villages. Based on information gathered during discussions with citizens, the parcel used to be part of a golf course and cannot be developed due its location on a limestone shelf located a few feet under ground. Given the significant and prohibitive challenges with further development of housing in this area, and its proximity to existing residents, using this site for a new park and recreational facility is desired. This site is a target for future acquisition and development into park property.

Another new park has been discussed on a parcel of land near the intersection of Indianapolis Rd. (E. State Road 240) and N. Calbert Way. This facility has been proposed on a parcel of land at the southeast corner of this intersection. Potential improvements would cater as a rest stop for trail users and the facility could be designed, along with improvements to Calbert Way Park, to serve as a welcoming gateway into the community. The city is currently in discussions with the property owner about acquiring the property for future park land development.

## PARK SYSTEM HISTORY

### ROBE-ANN PARK

The Greencastle Public Parks & Recreation System originated in 1928 when John and Anna Robe donated a parcel of land to the City. The Robes wanted the land to be used as a playground and recreation area for the citizens and particularly for the children of Greencastle. In 1934, the City along with its citizens began planning and development of Robe-Ann Park. Under the City guidance, in 1936 the



### Mary Rodgers Field Park



Source: HWC Engineering

### Robe-Ann Park



Source: HWC Engineering

### One of three Robe-Ann Park playgrounds



Source: HWC Engineering

High School Athletic Association assisted the community with building Robe-Ann Park's first major facility, a softball diamond. To facilitate further development and maintenance efforts at Robe-Ann Park the Greencastle Board of Park Commissioners was created in 1937. In 1956 Robe-Ann Park's role as a significant component of the Greencastle municipal structure was formally recognized with a City Council ordinance establishing the Greencastle Parks & Recreation Department.

Over the next 50-years, the board, department and the Friends of the Park Association of Putnam County, Inc. developed facilities at Robe-Ann Park that include the basketball and tennis courts, picnic shelters, Greencastle Aquatics Center in 1992, Castle Playground in 1995, modern restrooms in 1996, Emerald Palace Playground and GPRD Administrative Office and Maintenance Building in 2001, the Putnam County Skatepark in 2003, and most recently the acquisition and addition of the Clearwaters property to the park in 2006.

In 2007 a Brownfield Assessment of the Clearwaters addition to Robe-Ann Park was conducted with funding assistance from a Brownfield Petroleum Remediation Grant through the Indiana Finance Authority. The property was found "clear" in the Final Assessment Report from that study, which was published on January 23, 2008.

Under the inspiration and fundraising efforts of the Greencastle Civic League who's goals are "to make Greencastle a better place to live," along with funding from a Land & Water Conservation Fund Grant, 2014 saw the opening of the Bob York Memorial Splash Park which is a free attraction at the Greencastle Aquatics Center located within Robe-Ann Park for the youngsters of the Greater Greencastle area.

Officially opened on July 4, 2016, more than 40 players grabbed their rackets and were ready to



dedicate the six new pickle ball and three tennis courts located within Robe-Ann Park. Funded with a donation from Heartland Automotive in Greencastle, the new courts have seen enthusiasm for the fastest-growing sport in the United States, and the creation of Greencastle's Pickleball Club is an example of that growth.

Robe-Ann Park's northern entry way received a facelift toward the end of 2016, when the 24-foot roadway was cut down to a 12-foot pathway. In short, the old curbs and sidewalk were removed, along with the broken edges of the asphalt roadway. In 2017, the 12-foot pathway, along with the parking area located off of Anderson Street, received a 1-inch overlay. The parking area will be redefined in 2018 with the donation of four flower pots and new striping, designating one van accessible ADA parking space and a second short-term parking spot.

## JAYCEE PARK

In the mid 1970's, Jaycee Park was created and donated to the City of Greencastle by the Greencastle Jaycee's organization. In 1981 the park was leased back to the Jaycee's organization. Jaycee Park was then maintained by the Jaycees and offered for public use, with the exception of the community building which was made available on a stringent rental basis. In 2004 maintenance of the property was turned back over to the City of Greencastle Parks and Recreation Department with the disbandment of the local Jaycee's group. Many aesthetic repairs have been completed in the park since the turnover, including the removal of the grounds caretaker mobile home, removal of the entryway gate and fence opening up the entrance to the park, removal of the unsafe playground structures, renovating the outdoor primitive restroom facility, cleaning of the shelters, and repairing or replacing the picnic tables. Each day park personnel make a number of tours of the park to clean the shelters and to clean up trash,

litter and twigs. During the growing season, the park receives regular mowing every two weeks. This continued "presence" helps deter "unwanted" use of the park.

In 2006, the community building and park was adopted by DePauw University's Hartman House for the site of their annual "Make A Difference Day" project. Over 110 volunteers from DePauw University and the community helped paint the inside of the community building and walk the surrounding forest area for old appliances, trash and debris. Also in 2006, the roof to one of the shelters was replaced due to damage received after a tree fell on the shelter during a thunder storm.

In 2010, following specifications designed by the City Engineer, a contractor was hired to complete the replacement of the inlet controlling the level of the Jaycee Park pond. This included a slip lining to the drain pipe, new trash rack, and additional rip-rap around the inlet. This was in accordance to directions received by the Indiana Department of Natural Resources. The community building roof developed a leak that went undetected, which caused damage to the sheetrock walls in the restroom areas. In 2013, the walls were removed.

In 2014, a grass-roots core group of bicycle riders volunteered to undertake the reconstruction of the mountain bike trails that were very popular in the 1980's. This group planned, reconstructed existing and constructed new trails in the lower portion of the park. Their plans are to bring competitions to the park. Once these trails are used on a regular basis, there are plans to approach the Putnam County Airport Commission to solicit an expansion around the northern portion of Jaycee Park pond.

The summer of 2017 saw the renovation of one of the park shelters by Troop 99 Eagle Scout Sean Ramey. Completed as part of his Eagle Scout Project, he replaced the roof, painted the



support structure, assembled four picnic tables and completed landscaping around the shelter. The shelter is now highly used by park visitors.

### CALBERT WAY PARK

In 2002 and named after the drive that it is located on, Calbert Way Park and the Greencastle-to-Fillmore Trail was donated by the Friends of the Park Association of Putnam County, Inc.'s People Pathways Committee. Created as a trailhead to start the first phase of the committee's pedestrian and bicycle plan, the park offers a picnic shelter, parking lot, and greenspace. Many trees were moved and relocated to the park, due to a water and sewer line improvement project along Veteran's Memorial Highway. Since then, the park has received additional donations of benches, picnic tables and additional trees.

### MAPLE BERRY PARK

This property, located along Berry and Maple Streets, was purchased in 2003 by the Greencastle Board of Park Commissioners in a joint effort with other City departments to clean-up some less-than-attractive lots. Goals for the project were five-fold:

- Preserve existing greenspace by creating a small municipal park to serve neighborhood children
- Provide a potential trailhead for the People Pathways trail system
- Provide additional parking for the businesses and restaurants located in the area
- Purchase privately-owned land currently used as a public roadway
- Address safety concerns with the intersection of Maple, Broadway (Berry), and Sycamore Streets

In 2004, Maple Berry Park saw major improvements with the completion of the Maple Berry West Project. Development began with

a grant applied for and received through the City's Engineering Department for Brownfield testing. Petroleum residual was discovered in the eastern portion of the property, so the development of the western end was started using E.D.I.T. funding. The installation of curb, gutter and sidewalks around the parcel helped define the park. A concrete pad for a basketball court and drinking fountain was included in the project.

Many organizations have contributed to the development of the park. Kiwanis Club purchased a goal for the basketball court, Greencastle Civic League donated ten trees to the park, picnic tables were purchased with a Recycled-Content Purchasing Grant through the Indiana Department of Commerce, and benches were purchased by the family of Clifford and Dorothy Monnett.

In 2007, IWM Consulting Group, from Indianapolis, conducted a Brownfield Assessment of the Maple Berry – East site, which was funded by a Brownfield Petroleum Remediation Grant through the Indiana Finance Authority. It should be noted that in a Final Assessment Report dated, January 15, 2008, IWM makes the following recommendations, which were completed in 2009:

- two years of quarterly groundwater sampling
- monitoring for (<3years) of the dissolved hydrocarbon plume to determine if there is a need for additional assessment
- all of which qualified for funding through the IFA PRG program

### MICAELA CANCILLA PARK

In July of 2017, the Maple Berry Park – East project was officially dedicated "Micaela Cancilla Park" after a life-long resident of Greencastle. The new neighborhood park was constructed on the site of the old street garage located directly





behind Mama Nunz Restaurant. The park includes playground equipment, picnic table, trees and Micaela Cancilla Park sign constructed from Otto's Streetscape in Greenwood, Indiana.

### **BIG WALNUT COMMUNITY PARK**

In 2004, a maintenance agreement was established between the Big Walnut Sports Park Board, the City of Greencastle Board of Park Commissioners and City of Greencastle Parks & Recreation Department for the everyday maintenance of Big Walnut Sports Park. In exchange for maintaining all green spaces, water lines, trash receptacles, maintenance shed, picnic facilities, and the centrally located restroom facility, the agreement made the privately-owned youth sports facility accessible to the general public as a municipal park. The agreement has worked out well for the department with many compliments received in regards to the aesthetics of the facility. The agreement also provided an avenue for improvements to the park by providing matching land donations to be used toward federal and state recreation grants; i.e. Land & Water Conservation Fund and Recreation Trails Grants. More recently, Big Walnut Sports Park was donated to the Greencastle Parks and Recreation Department as match for a 2012 LWCF grant.

Also in 2004, People Pathways saw a big expansion with the construction of the People Pathways Phase V: Big Walnut Sports Park Loop Trail. This 1.2 mile, 10-foot wide asphalt trail encircles the 78.8-acre sports park and includes a new parking lot on the southern side making use of the two existing shelters more attractive. This project was funded by a Recreational Trails Grant from the State of Indiana Department of Natural Resources.

In October of 2005, the Greencastle Parks & Recreation Department received a \$129,342 Land & Water Conservation Fund Grant from the

### **Existing Calbert WAy Park Shelter**



*Source: HWC Engineering*

### **Maple Berry Park**



*Source: HWC Engineering*

### **Micaela Cancilla Park Playground**



*Source: HWC Engineering*



Indiana Department of Natural Resources for the development of Big Walnut Community Park. The grant funded construction of playground equipment, a wildflower & butterfly garden, pathways, and a 9-hole disc golf course.

The grant was matched with acquisition of 23.5-acres of land and infrastructure donated by the BWSP Board to the City of Greencastle. In 2007, the land match was deeded over to the City of Greencastle, creating Big Walnut Community Park. Late in 2008, the asphalt pathways and the playground were completed. The parking lots and drives, 9-hole disc golf course, and the wildflower and butterfly gardens were finished in 2009.

In addition, the Land & Water Conservation Grant stimulated local support and other contributions, which included \$600 from Marathon Pipeline for the purchase of new trees to replace three removed over the gas pipeline, \$1,000 from Cinergy PSI for any aspect of the project, and approximately \$450,000 from the Greencastle Economic Redevelopment Board for the paving of roadways and parking lots within the BWSP.

Through the winter months of 2009-'10, the Greencastle Redevelopment Board allocated funding for an additional parking lot which borders the Putnam County Youth Soccer Association's soccer fields. In 2010, The Greencastle Redevelopment Commission graciously financed a two-sided directional "Big Walnut Sports Park" sign, which now directs visitors off of Highway 240; as well as funded the planting of 10 - 5" maple trees that have been planted in the vicinity of the Little League Baseball and soccer fields. These trees should be large enough to provide shade to small groups of users during practices, games and tournaments.

A 2011 grant application for Land & Water Conservation Fund funding proved fruitful for improvements to Big Walnut Sports Park.

Improvements realized from the grant funding included ADA improvements to the adult slow-pitch softball field, dog park, expansion of the 9-hole disc golf course to 19-holes and construction of a parking lot.

### MARY ROGERS FIELD PARK

In 2006, the "Mary's Field" Committee of the Friends of the Park Association of Putnam County, Inc. raised over \$20,000 toward the development of Mary Rogers Field Park from a vacant lot located next to Greencastle City Hall in memory of their dear friend and park advocate Mary Rogers Field. Park development was completed in 2007 with improvements including a brick walkway and bench, tree and flower plantings. The installation of a split rail fence border and new park sign were completed in 2008.

### PEOPLE PATHWAYS

The People Pathways is a planning and implementation group under the Friends of the Park Association of Putnam County, Inc. Their goal is to improve the quality of life in Greencastle and Putnam County by developing connections within and between communities.

People Pathways has successfully developed a multi-use recreational trail plan after soliciting opinions from community members through a series of presentations and open meetings. The pathways will connect public spaces such as schools, parks, libraries, and community resources. Primary users of the pathways are pedestrians, joggers, runners and bicyclists. This includes children traveling to and from school, people seeking exercise and recreation, and commuters.

People Pathways has established a set of goals for the community. They are:



- Build bridges rather than walls between neighborhoods to help create a sense of belonging and community.
- Enhance the small town appeal of our community.
- Foster the mental and physical health of the citizens of our community.
- Create accessibility to our community's green spaces by developing linear exercise trails using existing and future infrastructure.

Implementation of the People Pathways plan will be completed in phases as the opportunities develop. A description of the phases which have already been completed is below:

**PHASE I:**

Greencastle-to-Fillmore Trail connects the City of Greencastle to the Town of Fillmore with a 3.1-mile crushed aggregate trail that was totally funded and constructed by community volunteers on an unused railroad right-of-way and sewer line easement. A Putnam County Community Foundation Challenge Grant, donations and contributions of in-kind services help develop the trail that has been actively enjoyed by the community since opening in May 1999.

**PHASE II:**

Sports Park Link is a 2-mile asphalt paved trail connecting the eastside residential neighborhoods with Big Walnut Sports Park and Greencastle's Industrial Park. Grants from the Lilly Endowment through the Putnam County Community Foundation, Cinergy/PSI, Indiana Gas, and Wal-Mart supported this project. Phase II opened in May, 2002.

**PHASE III, PART 1:**

Albin Pond Trail – Completed in 2010, the Albin Pond Trail addresses longstanding safety concerns by providing connections to four local schools, a nature center, ties to the Phase

I and II trails, and creates ties to a recently completed City-funded sidewalk improvement project. Funding for Phase III was generated through combined sources, which include a \$72,000 grant from the Putnam County Community Foundation, \$125,000 appropriation by the City of Greencastle leveraged against 80% of the construction costs from an INDOT TEA-21 Transportation Enhancement Grant for \$469,917.00. The TEA-21 Grant was received in 2000. The engineering design of the trail, appraisals, and land acquisition for right-of-way was completed in 2009, bid letting through construction of the project was held during 2010.

**PHASE III, PART 2:**

Safe Routes to School picks up where the Albin Pond Trail leaves off. Early in 2006 and due to delays and increased costs, the City of Greencastle and INDOT scaled back the Albin Pond Trail Project. At about the same time, the State of Indiana announced the Safe Routes to School Grant Program. The City of Greencastle submitted an application for the SRTS Program and on November 20, 2006 received a grant for \$159,487.00. Also known as the "Connector Trail Project", the SRTS trail constructed a shared use path from the south end of Deer Meadow Primary School to the campuses of the Greencastle High and Middle Schools. This project was "linked" to the Phase III, Part 1: Albin Pond Trail Project, which saw bid letting through construction during 2010.

**PHASE IV:**

The Campus Link Trail, involves the future construction of a dedicated 3.95-mile paved multi-use trail. The Campus Link Trail will provide significant community access from Greencastle's central business district to DePauw University's intramural athletic fields, DePauw's Nature Preserve/Arboretum, Middle and High School campuses of the Greencastle Community School

Corporation, Rokicki Community and the new Ivy Tech State Community College campus, linking directly to two existing phases of the People Pathways network and the Area 30 Career Center. The Campus Link Trail will also offer an important connection to the development of the National Road Heritage Trail, a 150-mile cross-state continuous system of multi-use trails. The Phase IV grant will be funded in part with an INDOT TEA-21 Transportation Enhancement Grant in the amount of \$905,410.00.

#### PHASE V:

Big Walnut Sports Park Loop Trail is a 10-foot wide asphalt trail paved around the perimeter of Big Walnut Sports Park. The Sports Park Loop provides a connection with the already completed Phase I: Greencastle-to-Fillmore Trail and Phase II: Sports Park Link. The cost of the 1.28-mile trail was \$184,067.50. Funds for construction were generated through a partnership with the Indiana Department of Natural Resources Recreational Trails Grant Program, the Greencastle Redevelopment Commission, Big Walnut Sports Park Board, Greencastle Parks and Recreation Department, and the People Pathways Planning Committee. The Big Walnut Sports Park Loop Trail was opened in March, 2005.

Another link to the People Pathways system established in Putnam County saw dedication with a ribbon cutting in September of 2016 when citizens gathered to celebrate the opening of the Putnam Nature Trail. As part of the Indiana's Bicentennial celebration, the new pathway runs from the west end of Veterans Memorial Highway southwest to Limesdale, establishing a pathway link from Limesdale to Greencastle to Fillmore and on east into Amo in Hendricks

County. Longtime People Pathways advocate Joy Marley reminisced about how this rail-to-trail link connected our past to our present, stating, "Some of us remember when trains came through on this land."

#### RECREATION PROGRAMMING

In the late 1980's to early 1990's, the focus of the department changed from just park maintenance to offering various recreation programming opportunities to the citizens of Greencastle. At that time, a full-time park superintendent was added to the department, along with seasonal assistance staff, in an effort to more effectively manage the recreational needs of the community. Concurrently, in 1992, the park board reorganized under Indiana State Code 36-10-4.

Under the management of the restructured park board and the new full-time park department director, the Greencastle Aquatics Center was built in Robe-Ann Park. Under both of their guidance, new playground equipment was donated by the newly created Friends of the Park Association of Putnam County, and a new restroom facility was added next to the softball field in the park. In addition, new shelters were constructed within the park and a significant increase in community volunteerism and revenue sources assisted with much needed improvements to the park.

Since then, many recreation programs have been introduced. The most popular summer program is the highly successful Summer Program of Awareness and Recreation for Kids Program or S.P.A.R.K. Program. S.P.A.R.K. has experienced growth both in the number of children participating and in the number of teenage and adult volunteer leaders who assist with the program. Increases in participation have been seen in the Learn-To-Swim, Water Babies, Tot Days, and 5K Run programs, as well. The Greencastle Civic League's Parkfest concerts-



in-the-park series, which is co-sponsored by the department, has also attracted more people to the park. In addition, the Celebrate "4" and National Night Out Committee Programs have also provide great opportunities for enjoying Robe-Ann Park.

Other programs have been established that continue through the present day. The Tennis Instruction for Youth Program draws a wide number of young participants each year. In 1998, the Greencastle Parks & Recreation Department began organizing the Greencastle Youth Basketball Program, which utilizes the Greencastle Community Schools and replaced the Parke County YMCA program. On average, 265 children have participated in the youth basketball program each year. During the last 8-years, the department has increased its programming significantly, dropping some and adding some as trends change.

## **FRIENDS OF THE PARK**

The mission of the Friends of the Park Association of Putnam County, Inc. is to provide healthy recreational opportunities and to promote the enjoyment of our community parks for all citizens, as well as promote the health and physical education of children and families in the Greencastle and Putnam County communities.

Founded in 1995, Friends of the Park of Putnam County, Inc. was formed by a committed group of citizens dedicated to providing positive recreational options for all citizens. The Friends' first project was the Castle Playground located in Robe-Ann Park.



*Page Left Intentionally Blank*





# PLAN DEVELOPMENT

## PUBLIC INPUT METHODS

Public input was sought for this project in several key ways.

- A public survey was made available online and in printed form to understand how the public uses the parks and what they expect out of the park system.
- Two public meetings were held at Greencastle City Hall to seek thoughts and ideas on new facilities and programs desired for the park system.
- A stakeholder workshop was held with stakeholders of Big Walnut Sports Park to gain a better understanding on how the sports leagues operate at the facility and to listens to thoughts and ideas for improvements to the facility.

## STAKEHOLDER WORKSHOP

An individual stakeholder meeting was held on November 3, 2017 between 7:00 p.m. and 8 p.m. with key influencers and users of Big Walnut Sports Park. Stakeholders at the meeting represented Greencastle Girl's Softball (fast-pitch and slow-pitch), Putnam County Youth Soccer Association, A Kinetic Change, and Greencastle Boys Baseball. In total there were 8 attendees that offered public input.

Major talking points of the meeting included recommended improvements to general facilities such as parking, lighting, and restroom, baseball facilities, softball facilities, basketball facilities,

soccer facilities, and disc gold facilities. Key points that came from stakeholders included:

- Parking needs to be better defined and circulation needs to be improved
- An indoor meeting facility would be beneficial to all leagues
- Lit facilities for all leagues and additional lighting for security
- WiFi coverage is desired
- Installation of fitness structures around the perimeter
- Additional restrooms are needed on the south side of the park near the dog park, disc golf, and shelter buildings
- Sport specific storage facilities
- A location for indoor and off-season training is needed
- Drinking fountains are needed for baseball and basketball facilities
- Soccer facilities need a new concession facility with electric and water services, permanent restrooms, and fencing
- Disc golf facilities need electric service for the shelters



## PUBLIC SURVEY

A survey with 25 questions was developed and distributed online via social media and provided in hard copy format, upon request. The survey become open to the public on October 15, 2017 and closed on November 16, 2017. A total of 324 people responded to the survey online and an additional 104 hard copies of the survey were completed and tabulated into the overall results shown here. A full copy of the survey results can be found in the document appendix. A summary of the survey results is provided on the following pages.

The age of survey respondents varied from the local demographics of Greencastle with approximately 78% of respondents being between 25 and 54 years old. The majority of respondents live in Greencastle (80%) and approximately 27% of respondents indicated they live within a 5 to 10 minute walk from a park.

More than 38% of respondents visit the park on a weekly basis and more than 71% of respondents visit the parks on a monthly basis. Approximately 7% of the respondents visited the parks daily. Of those visiting a park, Robe-Ann Park is the most visited park at 87%, followed by Big Walnut Sports Park at 76%, then People Pathways at 60%, and Jaycee Park at 19%. Maple Berry Park, Calbert Way Park, Mary Rodgers Field Park, and Micaela Cancilla Park all came in under 3%. Over 67% of respondents used other regional parks and recreational facilities frequently, indicating how important these facilities are in fulfilling the overall recreational needs of the Greencastle community. Commonly visited recreational areas listed by survey respondents include DePauw Nature Preserve, Lieber State Recreation Area, Turkey Run State Park, Raccoon Lake State Recreation Area, McCormicks Creek, and McCloud Nature Park.

The most popular activities among respondents were walking/jogging (75%) spending time

Figure 3.1: Age

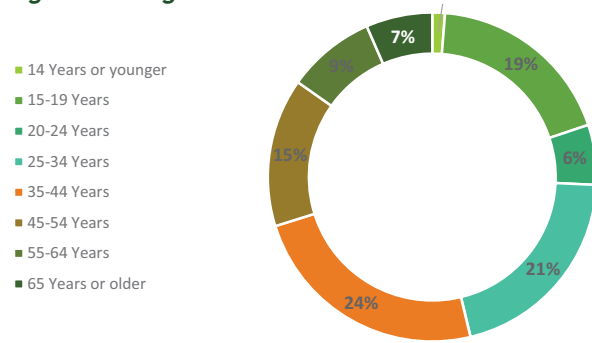


Figure 3.2: Park Proximity

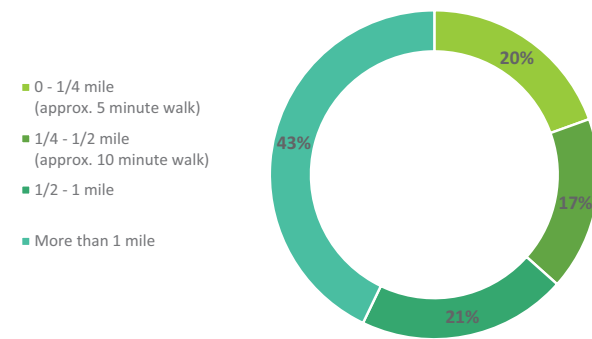


Figure 3.3: Frequency of Park Facilities Use

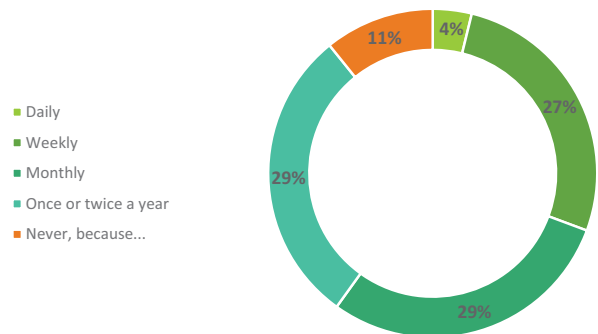
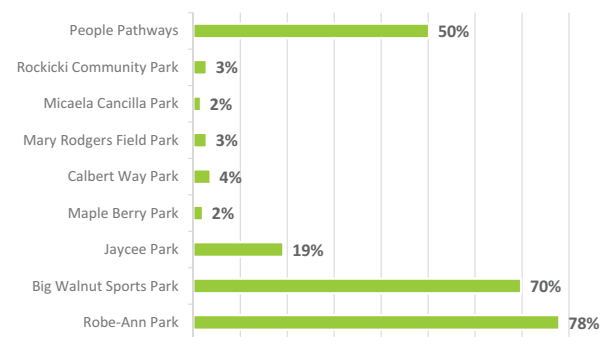
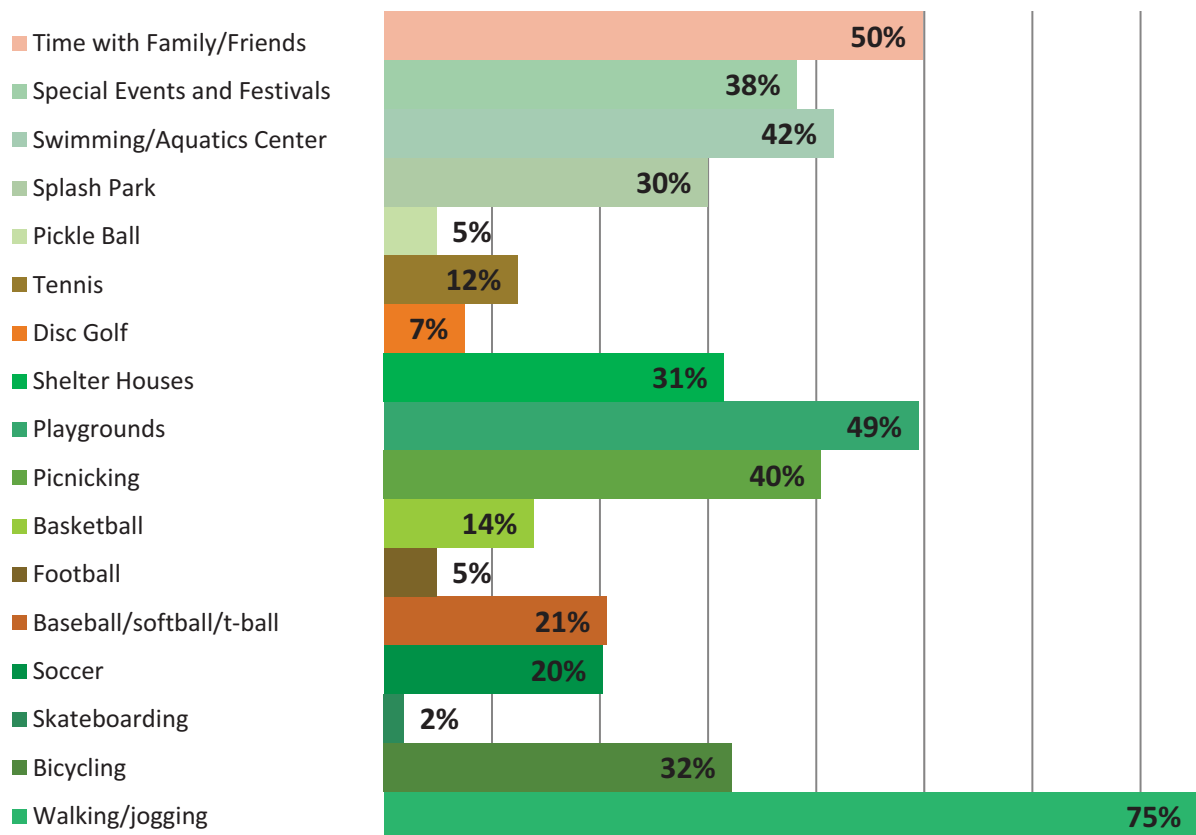


Figure 3.4: Use of Existing Park Facilities

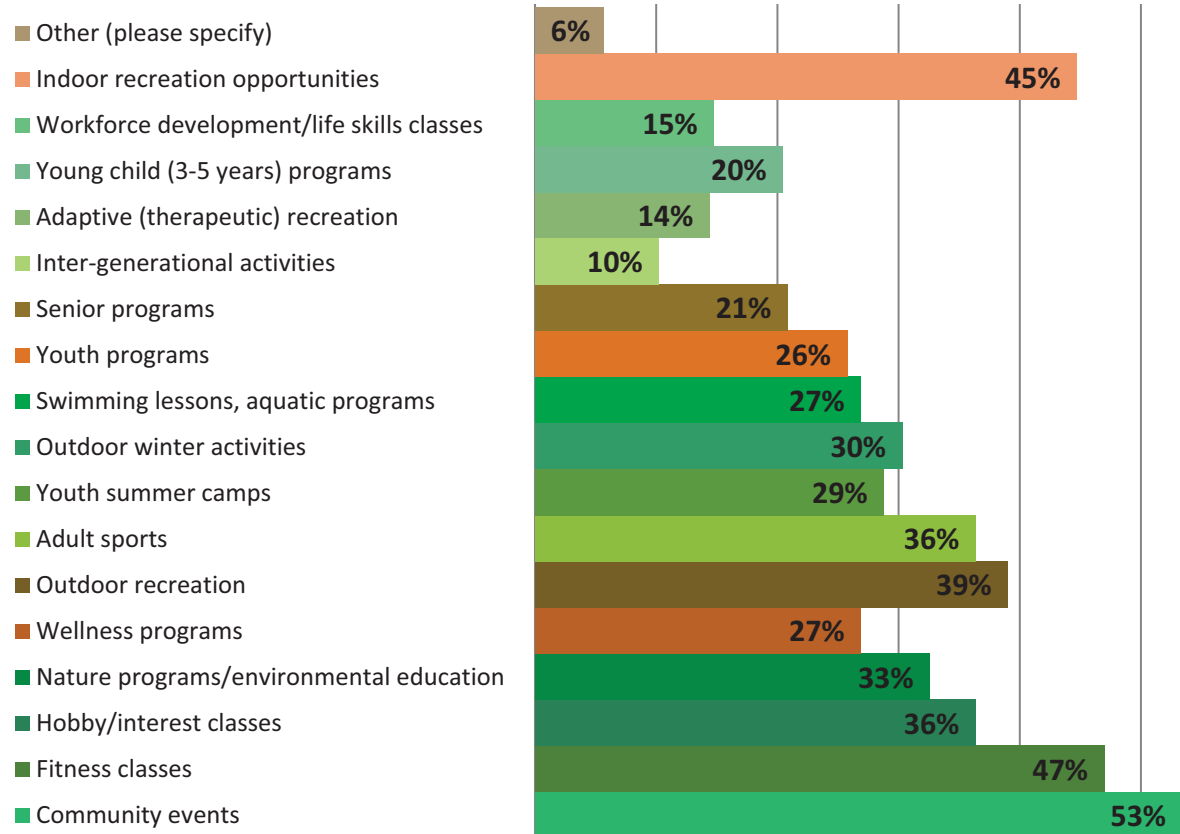




**Figure 3.5: Participation in Activities and Amenities**



**Figure 3.6: Programming Needs**



with family/friends (50%), playgrounds (50%), swimming/aquatics center (42%), picnicking (40%), special events and festivals (38%), and bicycling (32%).

The highest priorities for facility improvements in the park system were restrooms in parks and on trails (55%), and Wi-Fi at facilities (40%), indoor fitness equipment/weight room (38%). Other popular recommendations included drinking/doggie fountains (32%), multi-purpose fitness classrooms (25%), trail signage and mile markers (24%), and outdoor public pool improvements (23%).

Top results for programming needs included community events (53%), fitness classes (47%), indoor recreation opportunities (45%), and outdoor recreation (39%).

The top three highest priority capital improvement projects from respondents included updating park appearance (33%), adding additional trails for walking/jogging/biking (32%), and updating/adding lighting to parks (31%).

## PUBLIC MEETINGS

There was a total of three public meetings conducted for the plan. The first of two public meetings for the plan was held on November 3, 2017 between 7:00 p.m. and 8:00 p.m. at Greencastle City Hall. In total there were 10 attendees at the meeting, none of which were from the general public. Attendees were a part of Greencastle Parks and Recreation Department, Greencastle Board of Park Commissioners, and Banner Graphic Newspaper.

The purpose of the first public meeting was to seek thoughts and ideas on new facilities and programs desired for the park system. Major talking points included general system needs such as park staff, budget, police patrols, and signage, the aquatics center, Robe-Ann Park,

Jaycee Park, Ballard Family Park, and other unique opportunities for the park system. Key points that came from the public meeting include:

- To improve the maintenance of the park system
- Addition of a rope course or adventure course
- Better system wayfinding
- Better park distribution throughout the community specifically in the northwest corner
- Additional senior programming
- Connection of Jaycee Park to the park system
- The aquatics center could benefit from additional attractions such as a climbing wall, a lazy river, pool expansion for an activity pool, larger slide, more splash features, and a miniature golf course
- Robe-Ann Park needs upgraded basketball courts, overall beautification, a drive through display for a holiday light festival, resurfacing of driveways and sidewalks, more activities for older kids, and connections to adjacent apartment
- Jaycee Park needs to be developed into a usable area with more police patrols, electric service, addition of a fishing pond and camping facilities and expansion of the current mountain biking trail
- Ballard Family Park should be connected to Calbert Way Park. The area would be a nice picnic location and could include restrooms, a gazebo, parking, and possible heirloom/heritage plan garden
- Other unique opportunities for the park system included the quarry property next to Robe-Anne Park to be used for recreational use, community education,



revamping of programming, and a great need for a community recreation center.

The second public meeting was held on January 4, 2018 at 7 p.m. during the regularly scheduled Board of Park Commissioners meeting. The second meeting had one member of the general public in attendance. The third, and final public meeting was held on April 5, 2018 at 7:00 p.m. This meeting was a final presentation of the master plan to the public.

All public meetings were advertised via Facebook, email, local newspaper, radio, and direct phone contact.

## **ADDITIONAL PUBLIC INPUT**

Other public input was received from the Fraternal Order of Police (FOP) and received via emails from community members. Additionally, there were two independent stakeholder workshops conducted during the study. One at the beginning of the planning process which included city staff, elected officials, and other city department representatives. The other stakeholder workshop was conducted immediately prior to the first public meeting and included 14 people including representatives from the major youth sports programs, the police department, and city park staff.

## **SUMMARY OF PUBLIC INPUT**

Each type of public input method used was beneficial to gaining a better perspective of the community and the expectations of the parks system. The following issues were the top issues discussed by both the public and by the stakeholders.

## **KEY POINTS FROM THE PUBLIC**

- Overall beautification of all parks through maintenance and plantings
- Better wayfinding and programming
- Better park distribution in the northwest corner of the community
- To make Jaycee Park a more connected and usable park
- Possible opportunity for Robe-Ann Park to have recreational activities around the quarry
- Added attractions to the aquatic center
- For Ballard Park to be a picnic area that connects to Calbert Way Park
- A community recreation center is greatly needed for the community

## **KEY POINTS FROM THE STAKEHOLDERS**

- Parking at Big Walnut Sports Park needs a better circulation pattern and to be better defined
- Specific sport storage is needed
- Restroom facilities are needed near the disc golf facilities
- An indoor meeting facility is needed
- Lighted facilities for all leagues
- Electric services for soccer facilities and shelters near disc golf facilities
- WiFi coverage is desired



## RECOMMENDATION SYNTHESIS

The information gathered at the public meetings and from the public survey is a critically important component of developing overall improvement recommendations for the Parks and Recreation Master Plan. Information gathered through these formats was combined with data collected during the park site inventories and relevant demographic data to help develop a draft set of recommendations. The early draft recommendations were presented to Greencastle Parks and Recreation Department staff and vetted against factors such as anticipated budget and staffing resources.

The result of this exercise was a realistic, yet ambitious, list of facility and programming initiatives that the department should focus on for the next five years and beyond. The draft list of improvements was then provided to the Parks Board and the general public for additional review and comment. After additional adjustments, the resulting projects then became a finalized list of recommendations which were then used to formulate the implementation portion of this plan. The full results of this process can be found in the implementation chapter at the end of the plan document.



# PARK SYSTEM INVENTORY

## OVERVIEW

This chapter provides an inventory of the Greencastle Parks and Recreation Department facilities, the department structure, park locations, amenities, programming, community resources, and basic park accessibility.

## MANAGEMENT & ORGANIZATION

### LOCATION

PARKS & RECREATION DEPARTMENT  
405 South Bloomington Street  
Greencastle, IN 46135  
p (765) 653-3395

### STAFF

The Parks & Recreation Department staff has the responsibility of providing recreational programming to the residents of the Greater Greencastle area and also maintaining municipal parks and facilities throughout the community. The present Parks & Recreation Department is made up of the following personnel:

#### FULL-TIME:

- (1) Parks & Recreation Director (Parks Superintendent)
- (1) Assistant Parks & Recreation Director/ Aquatics Director
- (2) Full-Time Park Maintenance Laborers

#### PART-TIME/SEASONAL:

- (4) Park Maintenance Laborers (4-month, May – August)
- (2) Assistant Pool Manager/ (May – August)
- (1) Pool Concession Stand Manager (May – August)
- (27) Lifeguards (Memorial Day weekend – mid-August)
- (16) Concession Stand Workers (Memorial Day weekend – mid-August)
- (8) Program Supervisors for S.P.A.R.K.
- (6) Gym/Program Supervisors for Youth Basketball Program

#### CONTACT INFORMATION

PARK & RECREATION DIRECTOR  
Roderick M. Weinschenk  
[rweinschenk@cityofgreencastle.com](mailto:rweinschenk@cityofgreencastle.com)  
p (765) 653-3395

PARK & RECREATION ASSISTANT DIRECTOR  
Erin Ray  
[parkassistant@cityofgreencastle.com](mailto:parkassistant@cityofgreencastle.com)  
p (765) 653-3395



## PARK BOARD

The Greencastle Parks & Recreation Department was reorganized in 1992 under State of Indiana Code 36-10-4. The parks & recreation department is governed by the Greencastle Board of Park Commissioners, which consists of four members appointed by the Mayor, along with three board liaisons from the Putnam County Library, Greencastle Community School Board and the Greencastle City Council. Term of office is four years for regular members and one year for ex officio members.

The Greencastle Board of Park (& Recreation) Commissioners meet regularly on the first Thursday of each month at 7:30 p.m. in Greencastle City Hall. Members of the public are welcome and are encouraged to attend.

## BOARD OF PARK COMMISSIONERS

### PRESIDENT

Tim Trigg  
[ttrigg13@gmail.com](mailto:ttrigg13@gmail.com)

### VICE PRESIDENT

Dr. John Hennette, DDS  
[jdhennettedds@cinergymetro.net](mailto:jdhennettedds@cinergymetro.net)

### SECRETARY/TREASURER

Cathy Merrell  
[merrellcathy@yahoo.com](mailto:merrellcathy@yahoo.com)

### MEMBER

Beva Miller  
[bevamiller@cinergymetro.net](mailto:bevamiller@cinergymetro.net)

## EX-OFFICIO BOARD MEMBERS

### PUTNAM COUNTY LIBRARY LIAISON

David Taylor  
[djtaylor@cinergymetro.net](mailto:djtaylor@cinergymetro.net)

GREENCASTLE COMMUNITY SCHOOL  
CORPORATION LIAISON  
Micheal Scott

## FINANCING

The Department draws from two primary revenue sources in order to sustain its programs and facilities. These sources include property taxes and programming fees. The department's programming fees are generated from several areas, including the Greencastle Aquatics Center, picnic shelter rentals, and a variety of recreation programs. The department currently has a general operating fund, a non-reverting capital fund and two non-reverting sports operating funds - Greencastle Youth Basketball Program and Men's, Women's and Coed Softball Programs.

## AFFILIATE MEMBERSHIPS

The Greencastle Board of Park Commissioners and the Greencastle Parks & Recreation Department are members of the Indiana Parks & Recreation Association (I.P.R.A.), the National Recreation and Parks Association (N.R.P.A.), and the Midwest Regional Turf Foundation (M.R.T.F.).

## RECREATION PROGRAMMING

Programming for the City of Greencastle has been provided by several different entities. Many of the youth sports programs are organized by private volunteer groups. These programs include the youth soccer program, boy's baseball program, and girl's slow-pitch and fast-pitch softball leagues. Adult coed softball programs are offered under the church softball league. The following volunteer leagues exist in Greencastle:

- Putnam County Youth Soccer Association
- Greencastle Girl's Slow-Pitch Softball Program
- Putnam County Girl's Fast-Pitch Softball Program





- Greencastle Boy's Youth Baseball Program
- Babe Ruth Baseball Program
- Putnam County Church Softball League

The Greencastle Parks & Recreation Department offers various seasonal programs throughout the year. These programs are organized by both the Parks & Recreation Director and Assistant Director of the department. A current list of programs offered, include:

### ADULT PROGRAMS

- Greencastle Walk & Talk Program
  - Spring, Summer, Fall & Winter
- Women's Slow-Pitch Softball League
- Men's Slow-Pitch Softball League
- Early Bird (Summer) Coed Softball League
- Rokicki Foundation (Fall) Coed Slow-Pitch Softball League
- Softball Concession Stand
- Mike Rokicki Memorial 5K Road Run/Walk – July 4th
- Pickle Ball
- Lessons
- Pickle Ball Night
- All-County Doubles Pickle Ball Tournament – July 4th
- In-Door Pickle Ball at DePauw University
- Tiger Trails Bike Ride
- Disc Golf @ Big Walnut Sports Park
  - Doubles Disc Golf Nights – Wednesdays in June
  - A Mid-Summer Night Fling
  - Glow-Throw Disc Golf Tournament
  - National [Disc] Golf Lover's Day
- Corn Hole Tournament - July 4th

### YOUTH PROGRAMS

- Brick-Mania Programs
  - Brickmania: Brick Building

### SKATE PARK AT ROBE-ANN PARK



Source: HWC Engineering

### PLAYGROUND AT BIG WALNUT SPORTS PARK



Source: HWC Engineering

### ANDREW KEITH CARR MEMORIAL COURT AT BIG WALNUT SPORTS PARK



Source: HWC Engineering



### PEOPLE PATHWAYS IN BIG WALNUT SPORTS PARK



Source: HWC Engineering

### ONE OF MANY SHELTERS IN ROBE-ANN PARK



Source: HWC Engineering

### PICKLEBALL COURTS AT ROBE-ANN PARK



Source: HWC Engineering



#### Workshop

- Brickmania: Super Hero Day
- Brickmania: Revenge of the Fifth (Star Wars Day)
- Brickmania: Jolly Roger
- Brickmania: Hobbit Day
- Brickmania: Crack the Vault
- Brickmania: Pilgrim's Feast
- Brickmania: Christmas Party
- Brickmania: Santa Claus
- Brickmania: Melt These Winter Blues!
- Brickmania: Birthday Bash!
- Celebrate Kids Fishing Day!
  - Kids Fishing Derby
  - Huckleberry Finn Costume Contest
- SPARK – Summer Program of Awareness and Recreation for Kids
- SPARK Fundraiser Day at Myer's Market
- Firecracker Fun Run (July 4th)
- Police Boot Camp
- Fire Fighter Academy
- QuickStart Youth Team Tennis Instruction
- Phone Calls from Santa!
- Youth Basketball
- Youth Basketball Program (Grades 1-6)
- "My First Shot!" Basketball
- "Hog-N-It-All" BBQ Fundraiser
- National Night Out!
- Talk Like A Pirate Day
- Annual Easter Egg Hunt
- Hunt for the Great Pumpkin
- Breakfast With The Grinch!
- Winnie the Pooh Day!
- Dr. Suess' Birthday Party!

### AQUATICS PROGRAMS



- Learn-To-Swim Lessons
- Water Babies
- Private Swim Lessons
- Aqua Fit Classes
- Aqua "Walk & Talk"
- Private Pool Rentals
- "Birthday Party" Special
- Dive-In Movie – Moana
- Putnam County Swim Meet
- WREB Days! ("94 cent admission with music played by WREB 94.3 FM!)
- Recognized:
  - National Go Barefoot Day
  - Ice Cream Soda Day
  - It's Finally Summer Day
  - Swim A Lap Day
  - National Hot Dog Day
  - National Root Beer Float Day
  - National Ice Cream Day
  - National Ice Cream Sandwich Day
  - National Watermelon Day
  - Donald Duck Day

### ARTS-N-CRAFT PROGRAMS:

- Build It Yourself – Bird House
- Build It Yourself – Tool Box
- Halloween Contests
- Gingerbread House Challenge: Haunted House
- Brickmania [Lego] Challenge: "Trick or Treat"!
- How to Decorate the Great Pumpkin
- "Great Pumpkin" Decorating Contest
- "Toddler Turkey Time!"
- Snow Sculpture Contest
- Christmas Holiday Contests
- Gingerbread House Decorating
- Brickmania: Santa Claus
- "Cupid's Valentine!" Workshop
- National Tell A Fairy Tale Day

### FAMILY PROGRAMS

- Annual Celebrate "4" Festival in Robe-Ann Park
  - Mike Rokicki Memorial 5K Road Run/Walk
  - All-County Doubles Pickle Ball Tournament – July 4th
  - 14th Annual Firecracker Fun Run (July 4th)
  - Pancakes for Pathways Fundraiser (Greencastle Civic League)
  - Aqua Fit by Dance Workshop
  - Free Swim at the Greencastle Aquatics Center
  - Corn Hole Tournament
  - Music Entertainment
  - Fireworks
- Parkfest – Summer Concert Series in the Robe-Ann Park
- National Dog Day (at the BWSP Dog Park)
- Movie Night in Robe-Ann Park – Sandlot (on the softball field)
- Family Photo Scavenger Hunt! (Jaycee Park)
- Shelter Reservation

### ENVIRONMENTAL

- Earth Day/Arbor Day Celebration
- BWSP - Planted 6 potted trees
- Robe-Ann Park – Planted 4 potted trees
- BWSP – Planted 6 potted evergreens
- "What's That Track?" (at Jaycee Park)



## OTHER COMMUNITY RESOURCES

Greencastle and Putnam County enjoy a high number of publicly accessible natural recreational areas which contribute to the overall ability of residents to enjoy a variety of recreational activities outside of the Greencastle park system. Below is a description of the facilities within close proximity to the City of Greencastle. Greencastle's Parks and Recreation Department currently has no joint use agreement with schools in the community.

## LOCAL RESOURCES

### ■ DEPAUW UNIVERSITY

DePauw University is located along the southwest edge of the municipality and has extensive sports facilities. An indoor facility contains a metric/yard capability swimming pool, a multi-use gym, practice courts, dance room, dual weight rooms, classrooms and offices. Use of these facilities by the public requires an annual membership fee, and has been restricted to faculty and students only, with no new public memberships being issued. Outdoor facilities consist of both sport and practice fields, as well as a campus square. During the summer, week-long youth sports camps are available for a fee. A university astronomy observatory offers free programs open to the public at various times throughout the year. The newest facility is the Indoor Track and Tennis Center, in which various public instruction programs have been offered.

### ■ WINDY HILL GOLF & COUNTRY CLUB

Located just north of the City along State Highway 231, sits the privately owned and operated Windy Hill Golf and Country Club. Operating since 1953, the Club offers an outdoor pool, a Par 36 9-hole golf course, pro shop, and clubhouse with dining facilities on site. The course features 2,805 yards of golf from the longest tees for a par of 36, with a slope rating of 114.

### OLD HICKORY GOLF COURSE

Located north of Greencastle on State Highway 231, Old Hickory Golf Course features 18-holes, 5,805 yards of golf from the longest tees for a par of 72. Opened in 1992, the course rating is 68.2 and it has a slope rating of 120.

### ■ GREENCASTLE SCHOOLS

Five public schools comprise the Greencastle Community School Corporation, Inc. Each of the three elementary schools within the City of Greencastle has an adequately large-sized open area and playgrounds. The facilities are open to the public at restricted and designated times, but do not act as host sites for programming activities. Each building facility has a gymnasium and classrooms. Because of school sports programming and other extracurricular activities, gym space is at a premium.

The Middle and High School McAnally gym facilities are mainly used for school functions and are not readily available for community use. The high school swimming pool has on occasion been open for various community aquatic programs. Community residents have also, at times, been able to use the school facilities for special events during the school year and during the summer.

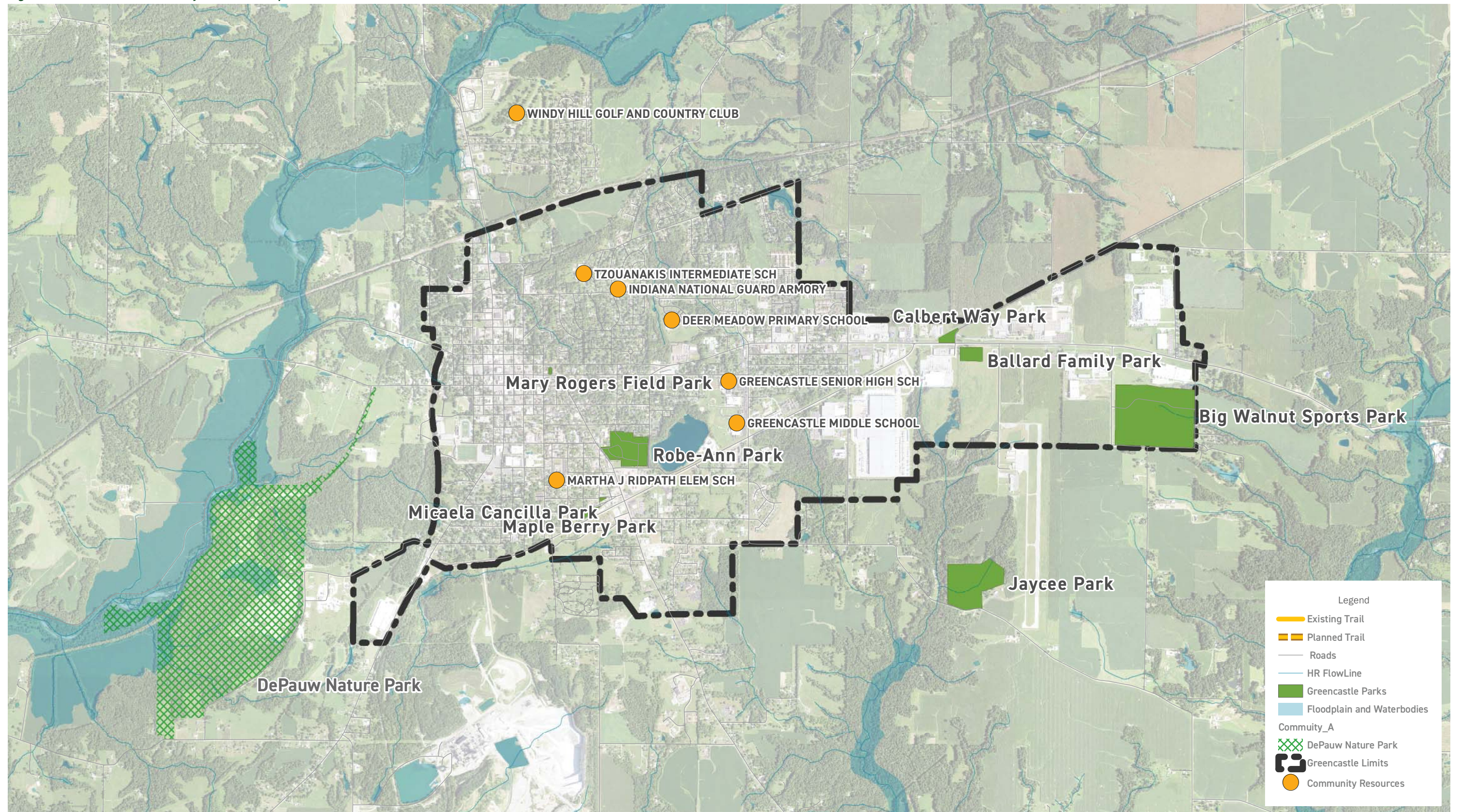
### ■ INDIANA NATIONAL GUARD ARMORY

The Indiana National Guard Armory is located at the intersection of Shadowlawn Avenue and Arlington Street next to Tzouanakis Intermediate School. This resource includes a softball field that is currently leased by the girl's softball program.





Figure 4.1: Greencastle Community Resources Map





*Page Left Intentionally Blank*



## REGIONAL RESOURCES

The following regional recreational resources have been included in the inventory because of their close proximity to the City of Greencastle. While these facilities will not typically meet the daily needs of Greencastle residents they do provide a rich a varied series of opportunities for additional recreational activities within a short drive of the city.

- **TURKEY RUN STATE PARK** - Consisting of 2,300 acres, Turkey Run provides sandstone forges, both modern and primitive campsites, inn, cabins, swimming pool, picnic shelters, playground, fishing, canoe rental, naturalist, nature preserve, horse and bike rentals, tennis courts, hiking, a restored 1841 house, and covered bridge. The park is located approximately 35-miles northwest of Greencastle.
- **MCCORMICK'S CREEK STATE PARK** - Consisting of 1,800 acres, McCormick's Creek Provides canyons, ravines, both primitive and modern camping, cabins, inn, pool, basketball and tennis courts, playgrounds, nature center, nature preserve, naturalist, hiking, horse and bike rentals. The state park is located approximately 30-miles southeast of Greencastle.
- **SHADES STATE PARK** - Consisting of 3,000 acres, Shades State Park has virgin forest, natural springs, sandstone cliffs, primitive deep ravines, modern and primitive campsites, canoe rentals, picnic shelters, playgrounds, fishing, hiking, nature preserve, and an airstrip. Shades State Park is located approximately 30-miles northwest of Greencastle.
- **LIEBER STATE RECREATION AREA** - Lieber State Recreation Area (SRA) consists of 8,000 acres of forested land, a 1,500 acre lake with beach, primitive and modern campsites, picnic shelters, playground, fishing, foraging, trapping, and swimming pool. Lieber State Recreation Area is located approximately 15-miles south of Greencastle.
- **OWEN-PUTNAM STATE FOREST** - This 6,200-acre state forest preserve, offers primitive campsites, hiking, bridle trails, hunting, fishing, foraging, trapping and playgrounds. Owen-Putnam State Forest is located approximately 30-miles southeast of Greencastle.
- **RACCOON LAKE STATE RECREATION AREA** - This area include native forests, large rock outcrops that line the upper part of Big Raccoon Creek, and Cecil M. Harden Lake. Located nearby is the preserved Historic Mansfield Roller Mill. Activities offered here include a beach, boating, camping, fishing, hiking, and hunting. Located approximately 20 miles northwest of Greencastle.
- **CATARACT FALLS STATE RECREATION AREA** - This recreation area offers the largest waterfall in Indiana. Included with Lieber SRA and Cunot Ramp this area consists of 8,000 acres of forested land, a 1,500 acre lake and offers a playground, shelter house, and hiking trail . Cataract Falls SRA is located approximately 22 miles southeast of Greencastle.
- **MCCLOUD PARK NATURE CENTER** McCloud Nature Park is 232 acres of woods, glacial ravines, prairie, and creek and offers visitors activities such as hiking, fishing, wading, canoing, kayaking, a nature center, and pavillion rental. McCloud Nature Park is located approximately 23 miles northeast of Greencastle.

## GREENCASTLE PARK SYSTEM



Greencastle's public park system was established on the merits and hard work of continuous community input, volunteerism and foresight. Greencastle's eight vibrant parks, the People Pathway pedestrian and bicycle trail system, in conjunction with the numerous other private and public facilities already discussed, combine to provide a vital community-wide parks and recreation system for the Greencastle area.

The City of Greencastle and its surrounding area includes a mix of both public and private recreational facilities, ranging from public parks and school athletic fields to privately owned golf courses and church recreation facilities. For the purposes of determining the provision of total community-wide recreational services, this plan is based on the recognition that not only the City of Greencastle, but also other private and semi-private entities currently contribute to the fulfillment of parks and recreational needs within the community. It is further recognized that non-public facilities will continue to be provided in the future in the same proportion as they are now. Therefore, the Community-Wide Park & Recreation System Inventory is thoroughly documented in the following chapter, providing an accurate depiction of the recreational services available to the entire Greencastle community.

The City of Greencastle Parks and Recreation Department currently consists of seven municipal parks and one proposed park site, which include:

- Robe-Ann Park
- Jaycee Park
- Calbert Way Park
- Maple Berry Park
- Micaela Cancilla Park
- Big Walnut Community Park
- Mary Rogers Field Park
- Walter & Eleanor Ballard Family Park

The park and recreation department's greenspace inventory also includes the People Pathways trail system, a public system of pedestrian and bicycle pathways planned to connect major community facilities with neighborhoods and schools. The People Pathways trail system is managed in cooperation with the People Pathways Committee, which is affiliated with the Friends of the Park. The People Pathways trail corridors include the following segments:

- Phase I: Greencastle-to-Fillmore Trail
- Phase II: Sports Park Link (Robe-Ann Park to BWSP)
- Phase V: Big Walnut Sports Park Loop Trail
- LWCF: Big Walnut Community Park Trails
- Fawnview Lane-to-Judson Drive
- Brentfield Drive and Brentfield Lane Connection
- Fawnview Lane-to-Glenview Lane Connection (asphalt sidewalk)

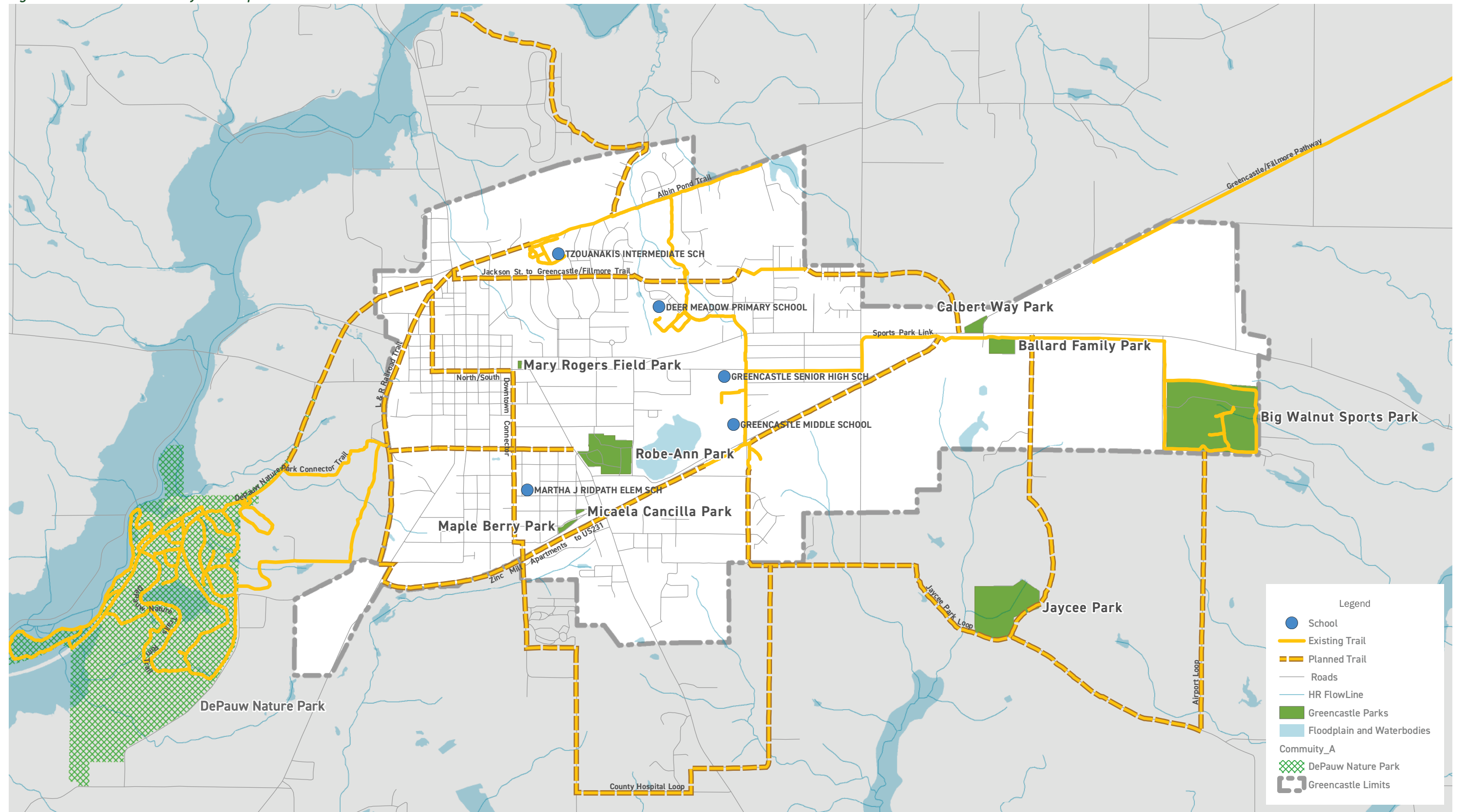
The Parks and Recreation Department continues maintenance responsibilities for the following additional non-park green areas within the city:

- Franklin & Spring Street parking lot (acquired with city hall)
- Columbia Street parking lot
- Northwood Boulevard islands (3)
- Highfall & Highwood triangular island
- Highwood & Shadowlawn triangular island
- Sherwood Drive cal-de-sac island
- Maple, Main & Apple Street triangular island
- Lot at corner of Arlington and Walnut Streets (old standpipe)

The map on the following page shows the location of the current parks within the Greencastle system. The remaining pages in this chapter provide a more detailed snapshot of each park facility.



Figure 4.2: Greencastle Park System Map



*Page Left Intentionally Blank*



## CURRENT PARK SYSTEM AMENITY SNAPSHOT + PARK INVENTORY SHEETS

	4		1		1
Baseball Fields		Disc Golf		Dog Park	
	1		2		1
Fishing		Horseshoe Pits		Mountain Bike Trails	
	2		6		9
Natural Areas		Pickle Ball Courts		Picnic Shelters	
	1		11.3		0
Basketball Courts		Walking Trails (miles)		Volleyball Courts	
	6		3		1
Playgrounds		Tennis Courts		Splash Pads	
	5		14		1
Softball Fields		Soccer Fields		Skateboard Parks	
	2		1		2
Restrooms		Pool/Aquatic Center		Concessions	



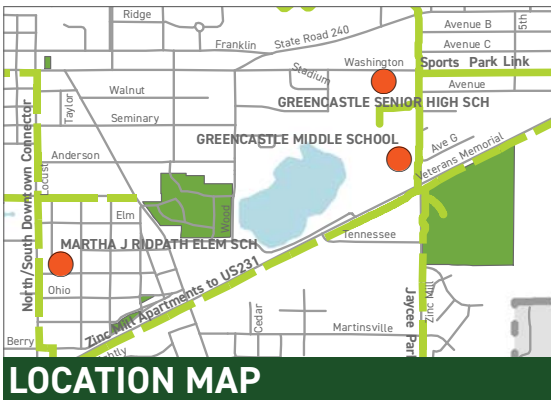
# ROBE-ANN PARK

ADDRESS: 405 S Bloomington St.



**COMMUNITY PARK**  
Size = 28.0 acres

## AMENITIES



## BASIC DESCRIPTION

Robe-Ann Park is centrally located in Greencastle and hosts the Greencastle Aquatics Center, Bob York Splash Park, Daughters of the American Revolution Historic Log Cabin, Emerald Place Playground and 3 other playgrounds, 3 picnic shelters, lit softball diamond, 3 tennis courts, 6 pickle ball, 2 basketball courts, 2 horseshoe pits, a skate park, and is also home to the Greencastle Parks and Recreation Department administrative office



**AERIAL**

**SITE PHOTOS**



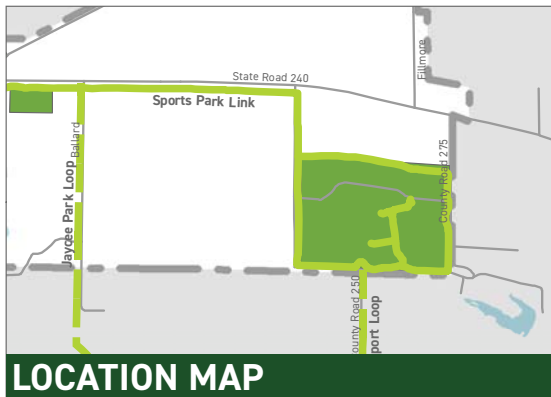
# BIG WALNUT SPORTS PARK

ADDRESS: 1300 S. Co. Rd. 225 South



**COMMUNITY PARK**  
Size = 78.8 acres

## AMENITIES



**LOCATION MAP**

## BASIC DESCRIPTION

Big Walnut Sports Park is located east of Greencastle and includes 14 soccer fields, 3 little league baseball diamonds, 3 girl's softball diamonds, 1 adult softball diamond, 1 NCAA/Babe Ruth baseball diamond, 19-hole disc golf course, the Keith Carr Basketball court, dog park, Joanne Haymaker Pine Grove, 3 picnic shelters, 1 playground, and 1.28 mile perimeter walking pathway.



**AERIAL**



**SITE PHOTOS**





# JAYCEE PARK

ADDRESS: 1681 East Co. Rd. 225 South



**NATURE PARK**  
Size = 22.0 acres

## AMENITIES



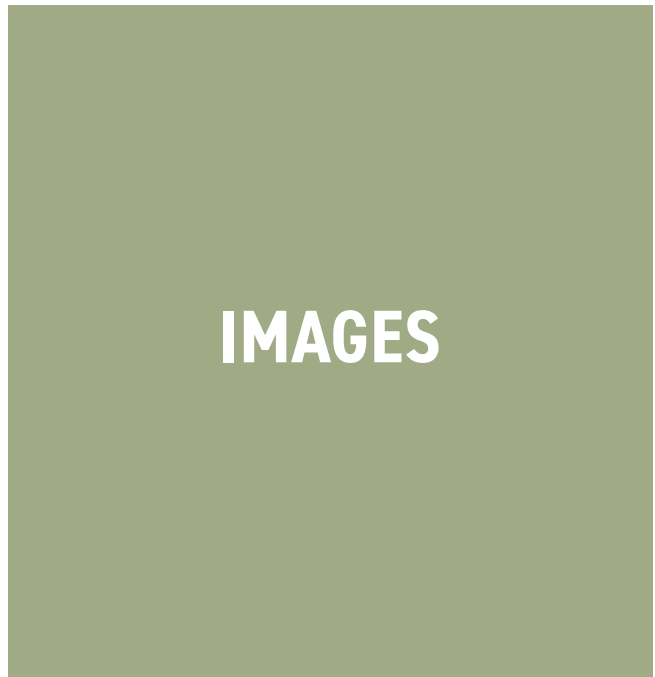
**LOCATION MAP**

## BASIC DESCRIPTION

Located just south of the Putnam County Airport, this nature park provides a great opportunity to relax and enjoy the wildlife in a natural setting. A small pond that is accessible for fishing, wooded nature trail, mountain bike trails, pit restrooms, and 2 picnic shelters provide many forms of outdoor recreation.



**AERIAL**



**SITE PHOTOS**





# MAPLE BERRY PARK

**ADDRESS:** Intersection of Maple and Berry Streets



**NEIGHBORHOOD PARK**  
Size = 1.0 acres

## AMENITIES



**LOCATION MAP**

## BASIC DESCRIPTION

Located at the intersection of Maple and Berry Streets on the south side of Greencastle, Maple Berry park was designed as neighborhood park containing a basketball court, park benches, picnic tables and open grassy play area.



**AERIAL**



**SITE PHOTOS**



# CALBERT WAY PARK

**ADDRESS:** Intersection of Hwy 240 and Calbert Way Dr.



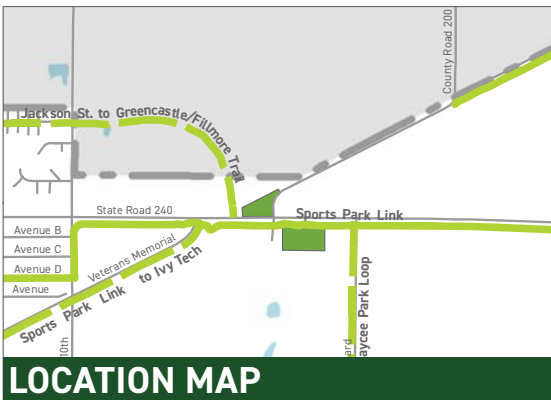
**NEIGHBORHOOD PARK**  
Size = 1.5 acres

## AMENITIES



## BASIC DESCRIPTION

Located at the intersection of Highway 240 and Calbert Way Drive on the east end of Greencastle, Calbert Way Park serves as the trailhead for the Greencastle-to-Filmore Trail and offers a picnic shelter, park benches, open space, and trail use parking.



**SITE PHOTOS**





# MARY ROGERS FIELD PARK

ADDRESS: Next to Greencastle City Hall



**POCKET PARK**  
Size = 0.5 acres

## AMENITIES



## BASIC DESCRIPTION

Located next to Greencastle City Hall, the small pocket park was created in memory of a long-time Greencastle citizen and park advocate Mary Rogers Field. The park offers picnic facilities, bench, and ornamental flower beds and is a great place for meditation.



## SITE PHOTOS



# MICHAELA CANCELLA PARK

ADDRESS: Behind Mama Nunzio's Restaurant



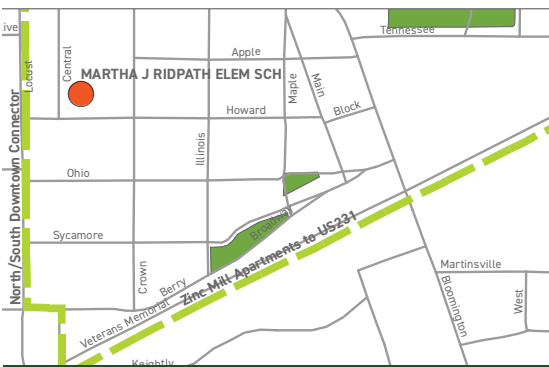
**NEIGHBORHOOD PARK**  
Size = 1.0 acres

## AMENITIES



## BASIC DESCRIPTION

Named after a life-long resident of the area, our newest municipal park is located at the site of the old parking lot behind Mama Nunzio's Restaurant and includes a newly installed playground, picnic table and green space. All park boundaries have been defined by concrete curb, gutter, and sidewalks.



**LOCATION MAP**



**AERIAL**



**SITE PHOTOS**





# PEOPLE PATHWAYS

ADDRESS: Throughout Greencastle



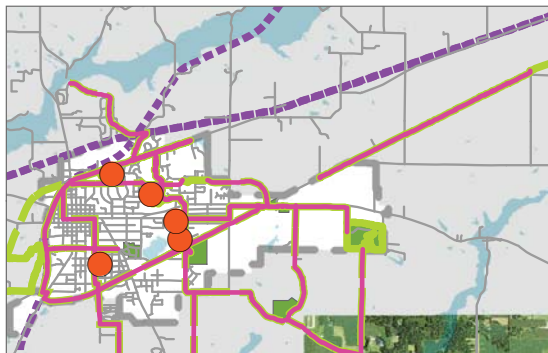
**GREENWAY**  
Size = 10 miles

## AMENITIES

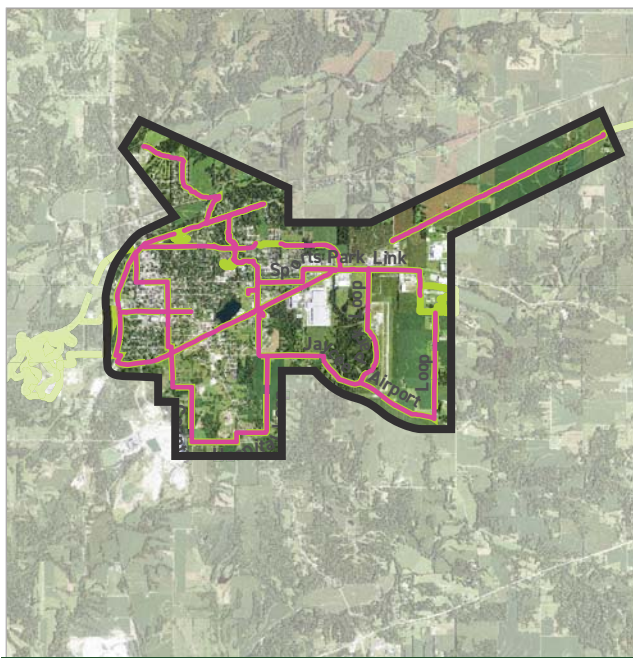


## BASIC DESCRIPTION

Approximately 10-miles of pathways and trails are located within and around the City of Greencastle. The Greencastle-to-Fillmore Trail links to a shared bike system in Greencastle and is a portion of the People Pathway that links to the Vandalia Trail to Coatesville and will be a part of the future National Road Heritage Trail to which will eventually span 160 miles from Terre Haute to Richmond. On the People Pathways Trails, a hiker or biker can view the many exquisite buildings of the DePauw University campus and Greencastle's many parks, restaurants, shops, museum and even ride across a covered bridge.



**LOCATION MAP**



**AERIAL**



**SITE PHOTOS**



## ACCESSIBILITY AND UNIVERSAL DESIGN

### STATEMENT OF ACCESSIBILITY

The Greencastle Board of Park Commissioners and the Greencastle Parks & Recreation Department supports the American with Disabilities Act by making reasonable accommodations in serving individuals with disabilities. Program and facilities are offered on a non-discriminatory basis. The designation “accessible” indicates access for wheelchair users in compliance with the Uniform Federal Accessibility Standard (ADA).

A self-evaluation was conducted by the City of Greencastle Building Inspector on June 12, 2006. Evaluations were completed for Robe-Ann, Jaycee and Big Walnut Sports Parks. These were updated on July 9, 2009.

All new construction or improved park facilities since 2012 have been, and will be, completed in accordance with Accessibility and Universal Design Rules providing that funding is available to complete the entire improvement project.

### CURRENT ACCESSIBILITY

While the Parks Department facilities have been inventoried, no formal evaluation of ADA compliance of facilities has been undertaken as part of this plan. It is recommended that a thorough evaluation of all facilities and programs be completed with an ADA specialist or coordinator in the future in order to assure the most current requirements are being met. Future funding eligibility may be dependent on having completed an ADA compliance evaluation.

Since the self-evaluations conducted on June 12, 2006 and July 9, 2009, the Greencastle Parks & Recreation Department has constructed five parking lots at Big Walnut Sports Park and two at

Robe-Ann Park that have addressed some of the accessible route issues all designating proper parking locations and signage. We have also completed two shelter renovation projects at Robe-Ann Park that have addressed accessible route issues with the installation of sidewalks to the shelters. In 2010, a 2.1-mile bicycle and pedestrian trail that links four of the five community schools within Greencastle. This trail followed INDOT and AASHTO guidelines.

In 2012, the City of Greencastle completed and adopted an ADA Transition Plan which included an inventory of all city facilities including parks and recreation facilities. A 2013 update to the Greencastle Parks and recreation Master Plan Implementation Schedule included some projects to update existing facilities to meet the ADA Transition Plan goals. All of those projects have been completed with the exception of the Jaycee Park improvements.

Currently, Jaycee Park has many accessibility issues to address. When the proper funding is allocated and authorization received, a complete Master Plan of Jaycee Park will be conducted. In this plan, not only will we seek citizen input in regards to positives and negatives, as well as future development; but we will also establish a written plan to address ADA needs.

For ADA questions or concerns, four documents are available on the City of Greencastle, IN website. They are:

1. ADA Transition Plan
2. Notice Under The Americans With Disabilities Act
3. Title VI Complaint Form
4. Title VI Plan



Further, for ADA questions or concerns, patrons are encouraged to contact:

**Laurie R. Hardwick, City Attorney/ADA  
Coordinator**

City of Greencastle  
1 North Locust Street  
Greencastle, IN 4635  
(765) 653-3100  
lrhardwick@cityofgreencastle.com

If questions or issues arise in regards to the American with Disabilities Act and Greencastle municipal parks facilities, the following steps are spelled out in the City of Greencastle's Title VI Complaint Form, which is entitled: Grievance Procedure Under

## **THE AMERICANS WITH DISABILITIES ACT**

This Grievance Procedure is established to meet the requirements of the Americans with Disabilities Act of 1990 (ADA). It may be used by anyone who wishes to file a complaint alleging discrimination on the basis of disability discrimination in the provision of services, activities, programs or benefits by the City of Greencastle, Indiana. The City of Greencastle's Employee Handbook governs employment-related complaints of disability discrimination. The complaint should be submitted in writing and contain information about the alleged discrimination such as name, address, phone number of complainant, and the location, date and description of the problem. Alternative means of filing a complaint, such as personal interviews or a tape recording of the complaint will be made available for persons with disabilities upon request.

The complaint should be submitted by the grievant or his/her designee as soon as possible but no later than 60-calendar days after the alleged violation to:

**Laurie R. Hardwick, City Attorney/ADA  
Coordinator**

1 North Locust Street  
Greencastle, IN 46135  
(765) 6533100  
lrhardwick@cityofgreencastle.com

Within 15 calendar days after the receipt of the complaint, Laurie Hardwick or her designee will contact the complainant to discuss the complaint and the possible resolutions. Within 15 calendar days of contact, she or her designee will respond in writing, and where appropriate, in a format accessible to the complainant, such as large print, Braille, or audio tape. The response will explain the position of the City of Greencastle and offer options, for substantive resolution of the complaint.

If the response by Laurie Hardwick or her designee does not satisfactorily resolve the issue, the complainant and/or his/her designee may appeal the decision within 15 calendar days after receipt of the response to the Mayor or his/her designee.

Within 15 calendar days after the receipt of the appeal, the Mayor or his/her designee will contact the complainant to discuss the complaint and possible resolutions. Within 15 calendar days after the meeting, the Mayor or his/her designee will respond in writing, and where appropriate, in a format accessible to the complainant, with a final resolution of the complaint. The City reserves the right to extend the response time above if additional time is necessary to complete a thorough investigation.



All written complaints received by Laurie Hardwick or her designee, appeals to the Mayor, and responses from these two offices will be retained by the City of Greencastle for at least three years."

**ASSURANCE OF ACCESSIBILITY COMPLIANCE WITH:  
ARCHITECTURAL BARRIERS ACT of 1968 (As Amended);  
SECTION 504 OF THE REHABILITATION ACT OF 1973 (As Amended);  
AND TITLE II OF THE AMERICANS WITH DISABILITIES ACT OF 1990  
(As Amended)**

The \_\_\_\_\_ (Applicant) has read the guidelines for compliance with the Architectural Barriers Act of 1968 (As Amended); Section 504 of the Rehabilitation Act of 1973 (As Amended); and Title II of the Americans with Disabilities Act of 1990 (As Amended) and will comply with the applicable requirements of these Acts.

SIGNATURE \_\_\_\_\_  
APPLICANT PRESIDENT

\_\_\_\_\_  
(President's printed name)

SIGNATURE \_\_\_\_\_

\_\_\_\_\_  
(Secretary's printed name)

DATE \_\_\_\_\_





# NEEDS ANALYSIS

## SYSTEM ANALYSIS

This chapter will first review a series of industry recognized parks and recreation standards to help establish a baseline for the types of services and facilities which are currently in demand. It will then review the current facilities and programs offered within the Greencastle Parks and Recreation Department and will help identify notable surpluses and deficits in the local facility and programming offerings.

### STATEWIDE COMPREHENSIVE OUTDOOR RECREATION PLAN (SCORP) AS A COUNTY STANDARD COMPARISON

According to the 2016-2020 Statewide Comprehensive Outdoor Recreation Plan (SCORP), the top three reasons why residents participate in outdoor recreation are to be with family and friends, physical health and mental health. The top five outdoor recreation activities that residents participated in more than once per week include:

- Walking, hiking, jogging, and running
- Gardening and landscaping
- Relaxation and spiritual renewal
- Bicycle Touring
- Outdoor Pool Swimming or Water Park

Indiana's SCORP Level of Service (LOS) Guidelines recommend 20 acres of public recreation area per every 1,000 residents within a local area such as a county, township, city, or town. Public local recreation areas are described as being owned by the township, municipality, county, and being privately owned but open for public use. This excludes all school as many schools do not allow public access to their outdoor facilities.

*Table 5.1: County Comparison*

SCORP County Comparisons				
Level	Population	Acreage		
		Recommended Local Acres	Existing Acres	Surplus/Deficiency
Putnam	37,436	749	1,486	737
Greencastle	10,508	210	134	-76

*Based on the 2016-2022 SCORP*

Putnam county currently exceeds the recommendations for acreage outlined in the SCORP with a surplus of 737 acres. Additionally, Putnam County meets SCORP LOS recommendations in all three categories defined in the study (Local, Regional (State/Fed.), and Total)

However, the picture changes significantly when looking at the amount of publicly accessible recreational land available within Greencastle. Based on the SCORP county recommendation of 20 acres per 1,000 people, it should be providing 211 acres of public recreation areas and has current existing acreage of 134, leaving a local deficit of 76 acres.

It is important to note that the apparent deficit in Greencastle, based on SCORP recommendations, is an important consideration because these local facilities are where most resident's daily recreational activities will likely occur due to proximity and time constraints.



# IMAGE

## NATIONAL RECREATION AND PARKS ASSOCIATION (NRPA) AS A CITY STANDARD COMPARISON

The National Recreation and Parks Association (NRPA) is a non-profit advocacy organization dedicated to the advancement of public parks, recreation, and conservation opportunities. The NRPA periodically published research has become a nationally recognized resource for guidance and recommendations on parks and recreation facilities and programs. According to the 2017 NRPA Americans' Engagement with Parks Survey, which is a national survey, the top three reasons why residents go to parks is to be with friends and family (61%), to exercise and be physically active (56%), and to be closer to nature (55%). These top 3 reasons also closely correlate with the Indiana SCORP findings. Other notable reasons people go to parks, as indicated in the NRPA publication included:

- Walking, jogging, biking, and hiking (53%)
- Visit a local swimming pool or aquatic center, or playing a sport with family and friends (33%)
- Visit a local recreation/senior center (28%)
- Have children participate in out-of-school time programs (18%)
- Take part in classes or other activities at a local recreation center (17%)
- Participate in local sports leagues (16%)

## PARK SYSTEM SIZE

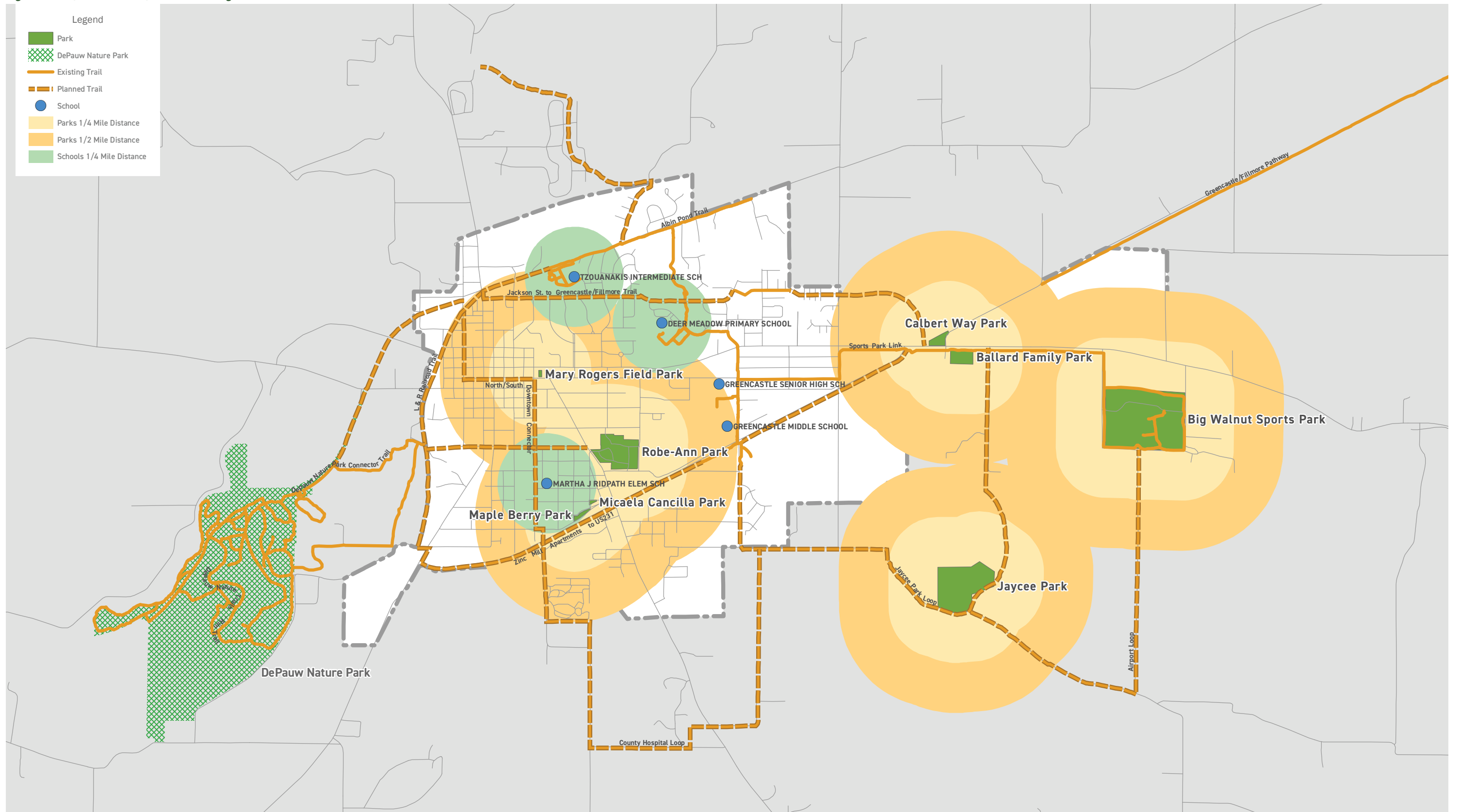
The 2017 NRPA Agency Performance Review offers park and recreation professionals valuable benchmarks and insights to guide them in evaluating how their agency is performing in comparison to other agencies. This information is intended to help inform decisions on optimal service and facility offerings, and inform people of the range of possible expanded activities and offerings from agencies throughout the nation.

The key park facility findings from the 2017 Performance Review relevant to parks planning in Greencastle indicated that within agencies in jurisdictions serving less than 20,000 residents, there is one park for every 1,331 residents. Likewise, the median amount of park land per 1,000 residents for agencies in jurisdictions serving fewer than 20,000 residents is 10.5 acres. Additionally, a typical park and recreation agency that manages or maintains trails for walking, hiking, running and/or biking currently has 10 miles of trails in its networks.

As previously discussed, the City of Greencastle's current estimated population is 10,508 people. Based on the NRPA benchmarks for typical park quantity and size, Greencastle should have approximately 8 parks totaling approximately 112 acres in the entire system. Greencastle's park system currently poses 8 parks totaling 133.8 acres. The current trail network in Greencastle consists of 10 miles of trails. Table 5.2 provides a summary of Greencastle's park land in comparison to various recommended averages and a regional peer community.



Figure 5.1: 1/2 Mile and 1/4 Mile Walking Distances



*Page Left Intentionally Blank*



## INDOOR AND OUTDOOR PARK AND RECREATION FACILITIES

The 2017 Performance Review also offers insight into facilities offered by other park and recreation agencies and provides facility to persons ratios that are valuable in evaluating Greencastle's existing facilities to determine overall surpluses and deficiencies. Table 5.3, on the following pages, identifies target park land and facility inventories in Greencastle for 2017 and 2022. These target inventories are based strictly on the NRPA information and Greencastle's population projections for the indicated year. Greencastle's current system indicates both surpluses and deficiencies when compared to NRPA recommendations. Most notably, some surpluses identified were in totlots, basketball courts, and youth soccer fields. Deficiencies in outdoor facilities included playgrounds, volleyball, multi-purpose fields, teeball fields, and outdoor ice rinks. As for indoor facilities, there are only deficiencies in this category as Greencastle currently has no publicly owned indoor facility to offer.

### THE TRUST FOR PUBLIC LAND (TPL) AS A CITY STANDARD COMPARISON

The Trust for Public Land is a charitable organization that works to create parks and protect land for people in an effort to ensure healthy and livable communities. The Trust for Public

Land's Center for City Park Excellence works to make cities more successful by providing data for park professionals and planners on trends in urban park and recreation systems. The 2017 City Parks Facts metrics are generated by the Trust for Public Land's ParkScore analysis and evaluates how larger cities are meeting the need for parks and recreation. Most notable from this data is the average percentage of population that is within a 1/2 mile radius of public park land, which is considered to be a walkable distance. According to TPL findings, 66 percent of people in an urban environment live within 1/2 mile of a public park facility. This is an important factor to consider since even a surplus of park land within a community may go unused if it is not easily accessible by people on foot.

The previous map depicts all of the current park facilities with a a quarter mile and half mile buffer around each facility. These buffers represent an approximate 10 minute and 15 minute walk distance, respectively. Greencastle currently has 66.7% of the population living within a 1/2 mile from a park facility. This is in line with national averages from the TPL study but it still means that nearly 34% of all Greencastle residents must get in a car to enjoy a park. It is important that these walk distances, especially the quarter-mile distance, are factored into future decisions relating to facility additions and expansions in Greencastle.

**Table 5.2: NRPA and TPL Standards Comparisons**

	Park Acres/1,000 residents (1)	Greencastle Surplus/ Deficient in Acres	Parkland as a Percentage of City Area (2)	Percent of Population with a 1/2 Mile of Park	Percentage of Parkland that is Designed	Percentage of Parkland that is Natural	Miles of Trails
Local Median (SCORP)	20.0	-76	n/a	n/a	n/a	n/a	n/a
National Median (NRPA)	10.5	+24	n/a	n/a	n/a	n/a	10.0
National Median (TPL)	13.1	-4	9.3%	66.0%	45.0%	55.0%	n/a
Indianapolis	13.4	n/a	5.1%	32.0%	44.0%	56.0%	n/a
Greencastle	12.6	n/a	9.9%	64.7%	81.7%	18.3%	11.3

*Based on the 2017 NRPA Agency Performance Review, 2017 City Facts, and the 2016-2022 SCORP*



**Table 5.3: Current Amenities and Target Ratios**

Amenity	NRPA Target Ratio (1)	Current Inventory	Current Ratio	Unit
<b>Park System Size</b>				
Residents per park	1.00 park/1,331 residents	8.0	7.9	Parks
Acres of Park Land	10.5 acres/1,000 residents	133.8	1.2	Acres
Miles of Trails	10 miles	11.3	1.1	Miles
<b>Outdoor Facilities</b>				
Playgrounds	1 / 3,633 residents	2.0	0.7	Ea.
Totlots	1 / 12,195 residents	3.0	3.5	Ea.
Basketball Courts	1 / 7,080 residents	4.0	2.7	Ea.
Tennis Courts (outdoor only)	1 / 4,375 residents	3.0	1.2	Ea.
Multiuse Courts -Basketball, Volleyball	1 / 15,250 residents	0.0	0.0	Ea.
Diamond Fields: Baseball - Youth	1 / 6,453 residents	3.0	1.8	Ea.
Diamond Fields: Baseball - Adult	1 / 19,226 residents	1.0	1.8	Ea.
Diamond Fields: Softball - Youth	1 / 8,500 residents	3.0	2.4	Ea.
Diamond Fields: Softball - Adult	1 / 12,468 residents	2.0	2.4	Ea.
Diamond Fields: Tee-ball	1 / 15,439 residents	0.0	0.0	Ea.
Rectangular Fields: Multi-purpose	1 / 12,468 residents	0.0	0.0	Ea.
Rectangular Fields: Soccer Field - Youth	1 / 6,199 residents	13.0	7.7	Ea.
Rectangular Fields: Soccer Field - Adult	1 / 12,226 residents	1.0	1.2	Ea.
Rectangular Fields: Football Field	1 / 26,250 residents	0.0	0.0	Ea.
Rectangular Fields: Lacrosse	1 / 27,332 residents	0.0	0.0	Ea.
Rectangular Fields: Cricket	1 / 147,500 residents	0.0	0.0	Ea.
Rectangular fields: Field Hockey Field	1 / 20,340 residents	0.0	0.0	Ea.
Multipurpose Synthetic Field	1 / 34,242 residents	0.0	0.0	Ea.
Overlay Field	1 / 10,820 residents	0.0	0.0	Ea.
Swimming Pools (outdoor only)	1 / 33,040 residents	1.0	3.1	Ea.
Ice Rink (outdoor only)	1 / 16,572 residents	0.0	0.0	Ea.
Community Gardens	1 / 31,000 residents	0.0	0.0	Ea.
Dog Park	1 / 42,500 residents	1.0	4.0	Ea.
<b>Indoor Facilities</b>				
Recreation Centers	1 / 27,591 residents	0.0	0.0	Ea.
Gyms	1 / 28,856 residents	0.0	0.0	Ea.
Community Centers	1 / 29,227 residents	0.0	0.0	Ea.
Senior Centers	1 / 48,822 residents	0.0	0.0	Ea.
Fitness Centers	1 / 40,946 residents	0.0	0.0	Ea.
Performance Amphitheater	1 / 48,000 residents	0.0	0.0	Ea.
Nature Centers	1 / 105,000 residents	0.0	0.0	Ea.
Stadiums	1 / 77,129 residents	0.0	0.0	Ea.
Ice Rink	1 / 30,642 residents	0.0	0.0	Ea.
Teen Centers	1 / 51,448 residents	0.0	0.0	Ea.
Indoor Track	1 / 50,667 residents	0.0	0.0	Ea.
Arena	1 / 57,300 residents	0.0	0.0	Ea.

(1) Target ratio standards are from the 2017 NRPA Agency Performance Review

(2) Target inventory is calculated by multiplying the 2016 population of 10,508 (based on U.S. Census Data) by the target ratio

(3) Target inventory is calculated by multiplying the 2023 projected population of 10,730 (based on U.S. Census Data) by the target ratio.



**Table 5.3: Current Amenities and Target Ratios continued**

Target Inventory 2017 Data (2)	Target Inventory 2022 Data (3)	2017 Surplus/Deficit (4)	2022 Surplus/Deficit (5)
7.9	8.1	0.1	-0.1
110.3	112.7	23.5	21.1
10.0	10.0	1.3	1.3
2.9	3.0	-0.9	-1.0
0.9	0.9	2.1	2.1
1.5	1.5	2.5	2.5
2.4	2.5	0.6	0.5
0.7	0.7	-0.7	-0.7
1.6	1.7	1.4	1.3
0.5	0.6	0.5	0.4
1.2	1.3	1.8	1.7
0.8	0.9	1.2	1.1
0.7	0.7	-0.7	-0.7
0.8	0.9	-0.8	-0.9
1.7	1.7	11.3	11.3
0.9	0.9	0.1	0.1
0.4	0.4	-0.4	-0.4
0.4	0.4	-0.4	-0.4
0.1	0.1	-0.1	-0.1
0.5	0.5	-0.5	-0.5
0.3	0.3	-0.3	-0.3
1.0	1.0	-1.0	-1.0
0.3	0.3	0.7	0.7
0.6	0.6	-0.6	-0.6
0.3	0.3	-0.3	-0.3
0.2	0.3	0.8	0.7
0.4	0.4	-0.4	-0.4
0.4	0.4	-0.4	-0.4
0.4	0.4	-0.4	-0.4
0.2	0.2	-0.2	-0.2
0.3	0.3	-0.3	-0.3
0.2	0.2	-0.2	-0.2
0.1	0.1	-0.1	-0.1
0.1	0.1	-0.1	-0.1
0.3	0.4	-0.3	-0.4
0.2	0.2	-0.2	-0.2
0.2	0.2	-0.2	-0.2
0.2	0.2	-0.2	-0.2

(4) Based on NRPA standards and U.S. Census Data for 2016

(5) Based on NRPA standards and U.S. Census Data for 2023



## PROGRAM ANALYSIS

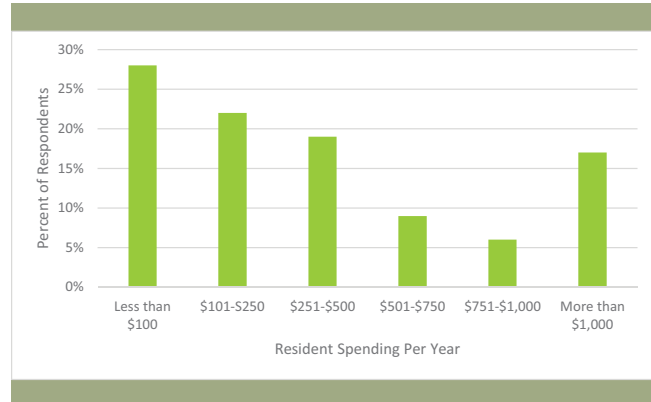
### CURRENT TRENDS

According to the 2017 NRPA Agency Performance Review, programming is a key outreach method that drives usage of park and recreation facilities, and when these become associated with registration fees can lead to the largest tax revenue source for most agencies. Programming is one of these trends and is a primary factor driving great park attendance. The public is less likely to visit parks unless they are attending programs and fewer programs can equate to reduced usage rates for parks, less community support and reduced budgets.

Agencies serving a population less than 20,000 people typically hold 35 fee-based programs. Social equity also needs to be factored in when deciding to hold fee-based programs. Department financial needs and providing recreational opportunities for all residents regardless of race, age or income must be balanced. The 2016-2022 SCORP suggests using tactics such as sliding or income-based fee scale, park prescriptions, and free park days. The Greencastle Parks and Recreation Department has traditionally only charged fees at an amount that covers extraordinary program expenses such as facilities or supplies.

Figure 5.4 is based of the 2016-2022 SCORP survey results on how much money residents were willing to spend per year on their favorite outdoor recreation. Approximately 28% of respondents said they would spend less than 100 dollars per year, while 22% said they would spend 101-250 dollars per year and 19% percent would spend 21-500 dollars per year.

Figure 5.2: Spending chart



Based on the 2016-2022 SCORP

The 2017 Performance Review also identifies key programming activities offered by at least 60% of parks and recreation agencies. These include:

- Team sports (86%)
- Fitness enhancement classes (80%)
- Health and wellness education (80%)
- Themed special events (72%)
- Social recreation events (70%)
- Safety training (69%)
- Aquatics (66%)
- Trips and tours (65%)
- Martial arts (62%)
- Performing arts (61%)
- Visual arts (61%)

Agencies with less than 20,000 people typically offered the following programs targeted specifically for children, seniors, and people with disabilities

- Summer camp (70.9%)
- Before school programs (16.2%)
- After school programs (41.1%)
- Preschool (26.7%)
- Full day care (2.1%)
- Specific teen programs (46.7%)
- Specific senior programs (68.2%)
- Programs for people with disabilities (33.8%)





## KEY ANALYSIS TAKEAWAYS

The NRPA and TPL benchmarks, in addition to the SCORP guidelines help to form a complete picture of the level of service the city should be providing for its' residents. This analysis resulted in a number of observations and recommendations which help to highlight potential improvements and future direction for the park system. Below is a summary of the primary takeaways of this analysis.

### PARK SYSTEM

Based on national and local standards the City of Greencastle is currently meeting the benchmark set by the NRPA but is not at the level recommended by the SCORP or TPL. Based on those standards, Greencastle has a park land deficiency ranging from 5.6 acres (TPL) to 79.1 acres (SCORP). Parks per 2017 population is right on target with 8 parks per 10,644 residents.

### OUTDOOR PARK FACILITIES

Based on NRPA national standards, Greencastle currently has a deficiency in most categories. The most significant categories are for an overlay field (-1.0 facilities), multi-purpose field (-0.9 facilities), and playgrounds (-0.9 facilities). These amenities would be beneficial additions.

### INDOOR PARK FACILITIES

Based on NRPA standards Greencastle is currently deficient in all categories for indoor facilities. These deficiencies in all categories would justify a multi-use indoor facility such as combining recreation center (-0.4 facilities), gym (-0.4 facilities), and fitness center (-0.3 facilities). Indoor park facilities were also top ranking by survey respondents for both facility

needs and programming needs. Indoor facilities were mentioned over 35 times in the comment sections of the survey questions. To help alleviate this deficiency, the City of Greencastle has established a working relationship with the Parke County YMCA and is investigating the construction of a YMCA/community Center within Greencastle. Leading into 2018, surveys, Memorandum of Understanding, land assessments have been secured, and an offer has been made on a tract of land in hopes of reserving it for a community center.

### NATURAL PARKLAND

TPL averages for percentage of parkland that is natural is 55%. Greencastle's current natural parkland inventory includes Jaycee Park, Calbert Way Park, and Ballard Family Park making the total percentage 18.3% of natural parkland. While Greencastle may be lacking in naturalized parkland, survey results show that many residents are traveling to the abundant nearby nature preserves and state parks. Some of these include DePauw Nature Preserve, Turkey Run State Park, Lieber State Park, Raccoon State Park, and more. With so many natural parks surrounding Greencastle, it might not be necessary to focus on adding naturalized parks into the park system and to instead focus resources on other areas of recreational need within the community, such as indoor facilities.



## PROGRAMMING

Greencastle currently hosts a variety of programs for the community. Programming includes youth and adult programs, aquatic programs, arts-and-crafts programs, and other community events. When comparing the programs offered by Greencastle Parks and Recreation Department to national trends (NRPA), there are holes that can be identified in the programming.

The biggest identified needs are in fitness enhancement classes and health and wellness education. While Greencastle's programming does provide programs that support an active lifestyle, such as team sports and walking/running clubs, they do not have programs that specifically provide fitness classes or health and wellness education for the community. In the public survey, fitness classes were the third highest programming need desired by respondents (52.3% of respondents).

Another large gap in Greencastle's programming includes themed special events and social recreation events. Greencastle does have some events such as Parkfest and the annual Easter Egg Hunt, but survey respondents (60.23% of respondents) identified community events such as festivals, 5k races, concerts, etc. as the top programming need.

Lastly, indoor recreation opportunities ranked as the second highest programming need by survey respondents (56.82%). Not only did this need come up in the programming needs but also in the facility needs. Currently Greencastle has no indoor facility to offer the community.



# IMPLEMENTATION

## ACCOMPLISHMENTS SINCE LAST PLAN

Before jumping into the recommendations for the current plan it is important to take a look back to review the accomplishments from the previous plan. There were originally 50 implementation items identified for completion during the 2011 to 2015 duration of the previous master plan. A subsequent update of the master plan implementation schedule in 2013 added an additional 15 items to the list during the period between 2013 and 2014 for a total of 65 implementation items identified for the planning period. During that period of time, many of these implementation items were completed. Below is a summary list of some of the major accomplishments from the previous planning period:

- Maple Berry Park – Develop Phase II: East End was dedicated Micaela Cancilla Park
- Calbert Way and Maple Berry Parks – Purchase and install new entry way signs
- Arbor Day Project - Purchase and plant 10 trees throughout park system
- Robe-Ann Park – Constructed new concrete pad north of pool with one picnic table and one grill
- Begin Land Acquisition Process for People Pathways Phase IV: Campus Link Construct
- Apply for Transportation Enhancement Grant for second stage of People Pathways Phase IV: Campus Link Trail
- Purchase new maintenance vehicles to replace older models
- Purchase new 72" mowers
- Greencastle Aquatics Center Improvements
  - Update & Move Electrical Panels
  - 2 Forms of ADA Entry into Pool
  - Portable Stairs installed
  - Install Splash Park

- 2011 Land & Water Conservation Fund BWSP Improvements: Softball ADA Improvements, Parking Lot Construction, Dog Park & 9 Holes Disc Golf
- Jaycee Park – Master Plan - \$8,000.00
  - Community Building
  - People Pathways Connections
  - Additional Park Facilities
  - Expanded Recreation Program uses
- Arbor Day Projects
  - Plant 3 pines J. Haymaker Grove BWSP
  - Plant variety of 7 trees in parks
  - Plant seedlings along Albin Pond Trail
  - Earth Day/Clean City Projects
- Purchase New Kubota Diesel Lawn Mower
- Regular Printing of Annual Brochure
- Evaluate current recreation programs
- Establish new recreation programs
- Addition of new full time and seasonal staff including hiring of an Assistant Parks Director to oversee recreational programming.

While this list is impressive given the financial and human capital resources of the department they are still lacking many of the improvements and additions the department needs to keep pace with peer communities. A review of past accomplishments reveals that many of the items on the list actually relate to ordinary equipment and facility maintenance and replacement needs for the department and very few of the system improvement and expansion projects were never completed.

Given the economic conditions present during the previous planning period it is not surprising that more capital improvements to the system were not undertaken. However, continuing in the same fashion for an extended period of time



placed the Greencastle Parks and Recreation Department at a high risk of falling so far behind on necessary expansion and updates that the likelihood of being able to 'catch up' to modern expectations and trends may be beyond the reach of the community. The good news is that the community has not yet reached that point but there should be a sense of urgency on behalf of the community to begin to look beyond simply maintaining what they have to instead embrace a full-fledged revitalization and renewal of the Greencastle Parks System, complete with facility improvements and expansion. This will require additional capital resources to be provided to the department, both from city budget sources and outside funding sources.

The following recommendations represent a list of items which address both the ongoing maintenance needs of the system but also the big ideas that residents, stakeholders, and staff indicated are needed within the community. Some of the projects represented here will be nearly impossible to implement under the current department funding structure, but with imagination and expanded resource allocation are not impossible to achieve. The following recommendations are broken down into two primary categories, first are improvements or steps which need to be undertaken on a system-wide basis and second are improvements or steps which need to be undertaken at specific facilities. Due to scale and complexity many of these projects may not be feasible within the 5-year duration of this plan. In those cases, there are steps identified which can be undertaken within the next 5-years to ensure that progress continues to be made towards these larger goals.





FIGURE 6.1: ROBE ANN PARK MASTER PLAN CONCEPT





FIGURE 6.2: BALLARD FAMILY PARK AND CALBERT WAY PARK MASTER PLAN CONCEPT



# Greencastle Parks & Recreation Department

## 2018-2022 Master Plan Implementation Schedule

Item#	Project Item Description	Budget	Staff	Grants	Donations/ Volunteer
		B	S	G	D/V
<b>2018</b>					
<b>Administrative</b>					
18-1	Training - Send FT staff to IPRA Annual Conference in on January 31-February 1	B	S		
18-2	Annual Brochure <ol style="list-style-type: none"> <li>1. Redesign annual Activity and Program Brochure, assigned to Assistant Director</li> <li>2. Release two per year, instead of just one               <ol style="list-style-type: none"> <li>a. March to September, 2018</li> <li>b. September, 2018 to March, 2019</li> </ol> </li> </ol>	B	S		
18-3	Increased budget – Work with the City of Greencastle elected officials on a strategy to procure additional funding towards parks department facility, programming and staffing needs	B	S	G	D/V
18-4	Greencastle Aquatics Center - Become American Red Cross Chapter	B	S		D/V
18-5	Greencastle Aquatics Center - Send Assistant/Aquatics Director to American Red Cross Lifeguard and LGI training courses	B	S		D/V
18-6	Summer Staff – Begin recruitment of summer seasonal staff earlier by ... <ol style="list-style-type: none"> <li>1. Advertise positions in February instead of March</li> <li>2. Send letter to past staff letting them know of application process</li> </ol>	B	S		
18-7	Evaluate all recreational programming <ol style="list-style-type: none"> <li>1. Focus on increasing attendance</li> <li>2. Establish criteria for determining popularity of existing programs and whether to repeat               <ol style="list-style-type: none"> <li>a. Sustainability of recreational programs – Do their revenues meet the expenses?</li> <li>b. Establish percentage of operational budget to cover some programming expenses</li> </ol> </li> <li>3. Increase senior programming</li> <li>4. Continue to explore and develop cooperative programs with DePauw University</li> </ol>	B	S	G	D/V
18-8	End-of-the-Year Transfer - \$15,000 to Park Non-Reverting Capital Fund	B			
<b>Robe-Ann Park</b>					
18-9	Construct new Band Shelter <ol style="list-style-type: none"> <li>1. Construct new band shelter by June 1<sup>st</sup> Parkfest Concert</li> <li>2. Address drainage issues</li> <li>3. Address Christmas light need while installing electrical plan for band shelter</li> </ol>	B	S	G	D/V



<b>18-10</b>	Parkhouse improvements - \$4,000.00 1. Replace front and storm doors (decrease draft and heat loss) 2. Install 2 lantern style front lights one each side of door 3. Install properly working door bell	<b>B</b>	<b>S</b>	<b>G</b>	<b>D/V</b>
<b>18-11</b>	Add a spectator bleacher pad on south side of Tennis/Pickle Ball court waiting area 1. Concrete pad \$1,500.00 2. 3-Row set of bleachers \$1,500.00	<b>B</b>	<b>S</b>	<b>G</b>	<b>D/V</b>
<b>18-12</b>	Greencastle Aquatics Center & Bob York Splash Park - Draft new employee manual based on American Red Cross training guidelines - assigned to Aquatics / Assistant Director	<b>B</b>	<b>S</b>		
<b>18-13</b>	Greencastle Aquatics Center 1. Renovate restrooms by installing new lockers 2. Renovate restrooms by stripping, sanding and staining, sealing floors similar to Walmart & Kroger renovations	<b>B</b>	<b>S</b>	<b>G</b>	<b>D/V</b>
<b>18-14</b>	Greencastle Aquatics Center – Address seating within facility 1. Purchase 12 Chaise Lounges for - \$3,600 2. Purchase 6 portable benches for additional seating. These may double as staging for swim meet participants - \$2,300.00	<b>B</b>	<b>S</b>		<b>D/V</b>
<b>18-15</b>	Bob York Splash Park – Relocate fence between splash park and aquatics center to establish “Party Zone” to serve splash park. This can be reserved & rented out for extra fee.	<b>B</b>	<b>S</b>		<b>D/V</b>
<b>18-16</b>	Greencastle Aquatics Center – Repair wooden fence under waterslide - \$250.00	<b>B</b>	<b>S</b>		
<b>18-17</b>	Greencastle Aquatics Center – Sand & seal entire wooden fence within facility - \$500.00	<b>B</b>	<b>S</b>		<b>D/V</b>
<b>18-18</b>	Greencastle Aquatics Center – Install permanent anchors for Portable Aquatic Lift - \$400.00	<b>B</b>			
<b>18-19</b>	Greencastle Aquatics Center & Bob York Splash Park – install sunscreen dispensers	<b>B</b>	<b>S</b>	<b>G</b>	<b>D/V</b>
<b>18-20</b>	Emerald Palace Playground - Sand & seal all wood - \$1,100.00	<b>B</b>	<b>S</b>	<b>G</b>	<b>D/V</b>
<b>18-21</b>	Move drinking fountain from south side of circle drive to north side - \$4,000.00	<b>B</b>	<b>S</b>	<b>G</b>	<b>D/V</b>
<b>18-22</b>	July 4 <sup>th</sup> light Christmas tree w/red, white & blue lights from Flag Day to July 10 <sup>th</sup> - \$250.00	<b>B</b>	<b>S</b>	<b>G</b>	<b>D/V</b>
<b>18-23</b>	Christmas Decorations in shelters 1, 2, 5 & bandshell	<b>B</b>	<b>S</b>	<b>G</b>	<b>D/V</b>
<b>18-24</b>	Emerald Palace Playground - Sand & seal all wood - \$1,100.00	<b>B</b>	<b>S</b>	<b>G</b>	<b>D/V</b>
<b>18-25</b>	Greencastle Aquatics Center & Bob York Splash Park – install sunscreen dispensers	<b>B</b>	<b>S</b>	<b>G</b>	<b>D/V</b>
<b>18-26</b>	Putnam County Swim Team Annual Invitational Swim Meet to be held on Friday to Sunday, June 8 to 10 <sup>th</sup> , 2018	<b>B</b>	<b>S</b>		<b>D/V</b>
<b>18-27</b>	Holiday Light Festival – with the construction of the new band shelter, establish volunteer citizen’s committee to help raise funding, purchase, installation, maintenance and supervision of festival	<b>B</b>	<b>S</b>	<b>G</b>	<b>D/V</b>
<b>Micaela Cancilla Park</b>					
<b>18-28</b>	Purchase and install playground seating - \$3,000.00	<b>B</b>	<b>S</b>		<b>D/V</b>





<b>18-29</b>	Install hippo within playground - \$500.00	<b>B</b>	<b>S</b>		<b>D/V</b>
<b>18-30</b>	Purchase & place ADA picnic table - \$1,300.00	<b>B</b>	<b>S</b>		<b>D/V</b>
<b>18-31</b>	Trees – Purchase and plant 2 Arbor Day trees	<b>B</b>	<b>S</b>		
<b>Maple Berry Park</b>					
<b>18-32</b>	Trees – Purchase and plant 2 Arbor Day trees	<b>B</b>	<b>S</b>		
<b>Walter &amp; Eleanor Ballard Family Park</b>					
<b>18-33</b>	LWCF Grant – Due to their adjacent locations, prepare and file Land & Water Conservation Grant for the development of Walter & Eleanor Ballard Family and improvements to Calbert Way Parks	<b>B</b>	<b>S</b>	<b>G</b>	<b>D/V</b>
<b>18-34</b>	Once received, complete donation of land process – deed as match to the LWCF Grant	<b>B</b>	<b>S</b>		<b>D</b>
<b>18-35</b>	Once donation has been made, design, order and install Walter & Eleanor Ballard Family Park	<b>B</b>	<b>S</b>	<b>G</b>	<b>D/V</b>
<b>Calbert Way Park</b>					
<b>18-36</b>	Sand & seal park shelter - \$500.00	<b>B</b>	<b>S</b>	<b>G</b>	<b>D/V</b>
<b>18-37</b>	LWCF Grant – Due to their adjacent locations, prepare and file Land & Water Conservation Grant for improvements to Calbert Way and the development of Walter & Eleanor Ballard Family Parks	<b>B</b>	<b>S</b>	<b>G</b>	<b>D/V</b>
<b>Big Walnut Sports Park</b>					
<b>18-38</b>	Complete parking lot renovations to Girls Softball Fields	<b>B</b>	<b>S</b>	<b>G</b>	<b>D/V</b>
<b>18-39</b>	Renovate central restroom facility to include men’s & women’s restrooms and to create a possible central meeting room within old concession’s room - \$14,000.00 a) Remove and replace fixtures b) Remove and replace partitions c) Remove and replace sheetrock & baseboard	<b>B</b>	<b>S</b>	<b>G</b>	<b>V</b>
<b>18-40</b>	Keith Carr Memorial Basketball Court – replace backboard that was broken by vandals	<b>B</b>	<b>S</b>		<b>D/V</b>
<b>18-41</b>	Soccer Electrical panel – before fall soccer season replace electrical panel serving field #1 lights	<b>B</b>	<b>S</b>		<b>V</b>
<b>18-42</b>	Soccer fence line – Install additional split rail fence to along central drive and soccer fields	<b>B</b>	<b>S</b>		<b>V</b>
<b>18-43</b>	Trees – Purchase and plant 12 Arbor Day trees	<b>B</b>	<b>S</b>		
<b>18-44</b>	Park Signage – Reconstruct east entryway sign	<b>B</b>	<b>S</b>		
<b>18-45</b>	Greencastle Youth Baseball parking lot project 1. Draft bid & construction documents 2. Seek bids from contractors 3. Begin project	<b>B</b>	<b>S</b>	<b>G</b>	<b>V</b>
<b>18-46</b>	Seek Engineer (CEC?) to draft RFP for 1” asphalt overlay of BWSP Loop Trail	<b>B</b>	<b>S</b>	<b>G</b>	<b>V</b>
<b>Jaycee Park</b>					
<b>18-47</b>	Increase recreation programming at Jaycee Park concentrating on nature based activities - \$500.00	<b>B</b>	<b>S</b>	<b>G</b>	<b>D/V</b> Boy/Girl Scouts
<b>18-48</b>	Install electrical services to both shelters	<b>B</b>	<b>S</b>	<b>G</b>	
<b>Other Improvements</b>					
<b>18-49</b>	Follow YMCA/Community Center Project	<b>B</b>	<b>S</b>	<b>G</b>	<b>D/V</b>
<b>18-50</b>	Arbor Day Planting at Robe-Ann Park 1. 2 Skinny Genes Oak trees - \$300.00 2. 2 Crimson Spire Oak trees - \$300.00	<b>B</b>	<b>S</b>		



## 2019

	<i>Move to 2019 any incomplete projects proposed in 2018</i>				
	<b>Administrative</b>				
19-1	Training - Send FT staff to IPRA Annual Conference	B	S		
19-2	Part-Time Secretary – examine budget for a 4-hour, 10:00 a.m. -2:00 p.m. Monday to Friday part-time secretary	B	S		V
19-3	Annual Brochure - Release two per year 1. March to September, 2019 2. September, 2019 to March, 2020	B	S		
19-4	Increased budget – Work with the City of Greencastle elected officials on a strategy to procure additional funding towards parks department facility, programming and staffing needs	B	S	G	D/V
19-5	Continue evaluation of recreational programming 1. Focus on increasing attendance 2. Establish criteria for determining popularity of existing programs and whether to repeat a. Sustainability of recreational programs – Do their revenues meet the expenses? b. Establish percentage of operational budget to cover some programming expenses 3. Increase senior programming 4. Continue to explore and develop cooperative programs with DePauw University	B	S	G	D/V
19-5	End-of-the-Year Transfer - \$15,000 to Park Non-Reverting Capital Fund	B			
19-6	Continue to follow YMCA Community Center project (Create plan for recreation center to hold programs)	B	S	G	D/V
19-7	Purchase with trade new Kubota lawn mower – \$12,000.00	B	S	G	D/V
	<b>Robe-Ann Park</b>				
19-8	Develop phased implementation plan for completing improvements schematic design developed during the 2018-2022 master plan process 1. Upgrade basketball courts to basketball only removing parking lot option 2. Improve park walking access by completing a sidewalk or trail connection to adjacent apartment complex 3. With the City of Greencastle design and complete park border improvements along Wood and Tennessee Streets a. Address parking issues b. Construct curb and gutter 4. Dedicate and construct a parking lot to serve the skatepark on the west side of skatepark with entryway off of Tennessee Street ( could provide ADA access to July 4 <sup>th</sup> event) 5. Circle Drive a. Construct connection to establish circle drive b. Redesign parking areas off of circle drive	B	S	G	D/V



	c. Establish travel routes with new circle drive				
19-9	Park House –Remove existing carpet in living and dining rooms and investigate sanding, staining and sealing oak floors. If bad, install new carpet - \$4,000.00	B	S		
19-10	Greencastle Aquatic Center - Purchase 12 Chaise Lounges for - \$3,600	B			
19-11	Purchase additional red, white and blue lights for July 4 <sup>th</sup> Patriotic tree - \$250.00	B	S	G	D/V
19-12	Holiday Light Festival <ol style="list-style-type: none"> <li>1. Determine appropriate entry fee which will allow broad enjoyment of the display but which will also support operations and maintenance of the festival in the future.</li> <li>2. Christmas Decorations – Purchase additional decorations for softball field &amp; central circle drive</li> </ol>	B	S	G	D/V
<b>Calbert Way Park</b>					
19-13	Construct small picnic shelter at beginning of “rail trail” off of Calbert Way Drive	B	S	G	D/V Eagle Scout
19-14	LWCF <ol style="list-style-type: none"> <li>1. Complete necessary paperwork to begin design of park improvements</li> <li>2. Draft and release construction bid documents</li> </ol>	B	S	G	D/V
<b>Walter &amp; Eleanor Ballard Family Park</b>					
19-15	LWCF <ol style="list-style-type: none"> <li>1. Complete necessary paperwork to begin design of park improvements</li> <li>2. Draft and release construction bid documents</li> <li>3. Draft master plan of park to include picnic shelter &amp; parking lot</li> <li>4. Purchase and install new entry way sign - \$1,500.00</li> </ol>	B	S	G	D/V
19-16	Flower gardens – preserve, border and work flower beds	B	S	G	D/V
<b>Jaycee Park</b>					
19-24	The overall goal for Jaycee Park is to make it a more connected and usable park within the municipal parks system. Review master plan for park development and begin ...	B	S	G	D / V
	1. Most important – increase police and park maintenance staff presence to help deter unwanted activities within the park	B	S		
19-25	2. Complete drainage earthwork around community building - \$3,000.00	B	S	G	D / V
19-26	3. Renovate existing indoor community building or demolish and create a new community / nature center (indoor rental facility)	B	S	G	D / V
19-27	4. Make pond improvements which will allow better fishing access to pond <ol style="list-style-type: none"> <li>a. Investigate and install ADA fully accessible fishing facilities.</li> <li>b. Construct accessible pathways to different areas of the pond</li> <li>c. Stock pond on an annual basis</li> </ol>	B	S	G	D / V



19-28	Investigate proposed route of pathway from Ballard Lane to Jaycee Park - \$1,500.00	B	S	G	D / V
19-29	Continue improvements on mountain bike trails, including expansion around north side of pond – \$1,000.00	B	S	G	D/V
<b>Big Walnut Sports Park</b>					
19-30	Seek Engineer to draft RFP for 1” asphalt overlay of BWSP Loop Trail	B	S	G	V
19-31	Big Walnut Sports Park – run electricity to central shelter next to playground - \$1,200.00	B	S	G	D / V
19-32	Big Walnut Sports Park – run electricity to two shelters on the south side of park - \$4,000.00	B	S	G	D / V
19-33	Evaluate and stripe all parking areas in need	B	S	G	D / V
19-34	Soccer parking lot – replace rock within tree planting areas with mulch	B	S		V
19-35	Playground Additions 1. Playground addition of swing set and dinosaur climber - \$12,000.00 2. Install ADA stand up sand digger - \$1,000.00 3. Add safety surfacing	B	S	G	D / V
19-36	Address Greencastle Youth Baseball Needs: 1. Complete construction of parking lot addressing ADA concerns 2. Install drinking fountain	B	S	G	D / V
19-37	Seek Engineer to draft RFP for concession, picnic shelter, training room, restroom facility to serve the Putnam County Youth Soccer Assoc. Fields – \$20,000.00	B	S	G	V
<b>Other Improvements</b>					
19-38	Arbor Day Project – plant 12 trees throughout park system. Suggestions: a. Shadowlawn Drive – 2 White pine trees - \$50.00 b. Micayla Cancilla Park – plant 1 Crimson King maple - \$100.00 c. Big Walnut Sports Park a. Joanne Haymaker Grove - 2 pine trees - \$210.00 b. Soccer fields – 2 Skinny Genes Oak trees - \$300.00 c. Disc golf course – 4 maple trees holes #2 & 7 - \$200.00 d. Disc golf course – 2 pine trees hole #9 - \$200.00 d. Robe-Ann Park – 2 pine trees - \$200.00	B	S	G	D/V
<b>2020</b>					
	<i>Incomplete projects moves to 2020</i>				
<b>Administrative</b>					
20-1	Training - Send FT staff to IPRA Annual Conference	B	S		
20-2	Increased budget – Work with the City of Greencastle elected officials on a strategy to procure additional funding towards parks department facility, programming and staffing needs	B	S	G	D/V
20-3	Annual Brochure - Release two per year 1. March to September, 2020 2. September, 2020 to March, 2021	B	S		
20-4	Provide a better park distribution throughout the	B	S	G	D/V





	community focusing on adding facilities within parts of Greencastle which are underserved - Northeast				
<b>20-5</b>	Increase Visibility of Park Amenities - \$12,000.00 <ol style="list-style-type: none"> <li>1. Improve local awareness of the park system and visibility of park facilities by improving the wayfinding signage – evaluate current design.</li> <li>2. Install directional wayfinding to all park facilities.</li> <li>3. Improve appearance of park entrances and gateways.</li> </ol>	<b>B</b>	<b>S</b>	<b>G</b>	<b>D/V</b>
<b>20-6</b>	End-of-the-Year Transfer - \$15,000 to Park Non-Reverting Capital Fund	<b>B</b>			
<b>20-7</b>	Continue to follow YMCA Community Center project (Begin design phase of recreation center to offer programs. Location to be determined; Robe-Ann, BWSP or Jaycee Parks.)	<b>B</b>	<b>S</b>	<b>G</b>	<b>D/V</b>
<b>20-8</b>	Purchase with trade new Kubota lawn mower – \$12,000.00	<b>B</b>	<b>S</b>	<b>G</b>	<b>D/V</b>
<b>Robe-Ann Park</b>					
<b>20-9</b>	Seek Engineer to draft RFP for Greencastle Aquatics Center Improvements: <ol style="list-style-type: none"> <li>1. Lazy River</li> <li>2. Add a second water slide</li> <li>3. 9-hole miniature golf course (construct inside lazy river)</li> <li>4. Bocce Ball court</li> <li>5. Deep water attraction – climbing wall</li> </ol> Bob York Splash Park – new splash features and/or fresh paint	<b>B</b>	<b>S</b>	<b>G</b>	<b>V</b>
<b>20-10</b>	Seek Engineer to redesign and draft RFP for reconstruction of Wood Street roadway to push driving lanes toward quarry and create on-street parallel parking on east side of Greencastle Aquatics Center	<b>B</b>	<b>S</b>	<b>G</b>	<b>V</b>
<b>20-11</b>	Greencastle Aquatic Center - Purchase 12 Chaise Lounges for - \$3,600.00	<b>B</b>			
<b>20-12</b>	Purchase additional red, white and blue lights for July 4 <sup>th</sup> Patriotic tree - \$250.00	<b>B</b>	<b>S</b>	<b>G</b>	<b>D/V</b>
<b>20-13</b>	Holiday Light Festival - Purchase additional decorations for light displays – \$2,000.00	<b>B</b>	<b>S</b>	<b>G</b>	<b>D/V</b>
<b>Walter &amp; Eleanor Ballard Family Park</b>					
<b>20-14</b>	Construct shelter & parking lot - \$15,000.00	<b>B</b>	<b>S</b>	<b>G</b>	<b>D/V</b>
<b>20-15</b>	Purchase picnic tables for shelter - \$4,000	<b>B</b>	<b>S</b>	<b>G</b>	<b>D/V</b>
<b>Calbert Way Park</b>					
<b>20-16</b>	Complete LWCF park improvements - \$30,000.00 <ol style="list-style-type: none"> <li>1. Construct restrooms connecting to existing lift station and water services</li> <li>2. Pave entry way and parking lot</li> </ol>	<b>B</b>	<b>S</b>	<b>G</b>	<b>D/V</b> Eagle Scout
<b>20-17</b>	Arbor Day Tree Planting - \$200.00	<b>B</b>	<b>S</b>	<b>G</b>	<b>D/V</b>
<b>Big Walnut Sports Park</b>					
<b>20-18</b>	Continue ADA Improvements within park	<b>B</b>	<b>S</b>	<b>G</b>	<b>D/V</b>
<b>20-19</b>	Continue adding split rail fencing to define roadways - \$3,000.00	<b>B</b>	<b>S</b>	<b>G</b>	<b>D/V</b>
<b>20-20</b>	Arbor Day Tree Planting - \$200.00	<b>B</b>	<b>S</b>	<b>G</b>	<b>D/V</b>
<b>Micaela Cancilla Park</b>					
<b>20-21</b>	Run electricity to established pine trees within park to include and light them during the Annual Holiday	<b>B</b>	<b>S</b>	<b>G</b>	<b>D/V</b>



	Light Festival - \$5,000.00				
20-22	Purchase LED Christmas lights to light the park - \$500.00	B	S	G	D/V
<b>Other Improvements</b>					
20-23	Arbor Day Project – Plant 12 trees throughout park system - \$1,300.00	B	S	G	D/V
20-24	Purchase w/Trade a new 72” mower - \$10,000.00	B			
20-25	Purchase additional picnic tables to be distributed throughout parks system - \$5,600.00	B	S	G	D/V
20-26	People Pathways – complete a 1” asphalt overlay \$25,000.00 a. Wal-Mart portion (from Veteran’s/Indianapolis Road to Ballard Park) b. Ballard Park stretch (Wal-Mart corner to Chyoda corner)	B		G	
20-27	Indoor Youth Sports Training Facility - Construct building & parking lot - \$800,000.00	B	S	G	D/V
20-28	End-of-the-Year Transfer to Park Non-Reverting Capital Fund - \$15,000.00	B			
<b>2021</b>					
<i>Incomplete projects move to 2021</i>					
<b>Administrative</b>					
21-1	Training - Send FT staff to IPRA Annual Conference	B	S		
21-2	Increased budget – Work with the City of Greencastle elected officials on a strategy to procure additional funding towards parks department facility, programming and staffing needs	B	S		
21-3	Annual Brochure - Release two per year	B	S		
21-4	Provide a better park distribution throughout the community focusing on adding facilities within parts of Greencastle which are underserved - Northwest neighborhoods & possible appropriation of vacant Railroad Property across from Eagle’s Club, a.k.a. as “Goose Island” area - \$30,000.00	B	S		
21-5	End-of-the-Year Transfer - \$15,000 to Park Non-Reverting Capital Fund	B			
21-6	Continue to follow YMCA Community Center project (Begin construction phase of recreation center to offer programs and for possible in-door facility rentals. Location - Robe-Ann, BWSP or Jaycee Parks.)	B	S		
21-7	Purchase with trade new pickup truck – \$26,000.00	B	S		
<b>Robe-Ann Park</b>					
21-8	Greencastle Aquatic Center - Purchase 12 Chaise Lounges for - \$3,400	B	S	G	D/V
21-9	Greencastle Aquatics Center – Secure funding for construction of Lazy River/9-hole miniature golf course - \$300,000.00	B	S	G	D/V
21-10	Emerald Palace Playground – 20 <sup>th</sup> Anniversary 1. Renovate playground through Leather’s 7 Associates 2. Sand & seal all wood - \$6,000.00 3. Throw 20 <sup>th</sup> Anniversary Party!	B	S	G	D/V
21-11	Christmas Decorations – Increase decorations	B	S	G	D/V



	<b>Big Walnut Sports Park</b>				
21-12	Continue ADA Improvements within park	B	S	G	D/V
21-13	Construct restrooms to serve the softball field, dog park, & southern shelters - \$150,000.00	B	S	G	D/V
21-14	Construct additional basketball court next to Keith Carr Memorial Basketball Courts - \$15,000.00	B	S	G	D/V
21-15	Construct volleyball court next to Keith Carr Memorial Basketball Courts - \$15,000.00	B	S	G	D/V
21-16	Drinking fountain installed to serve the Keith Carr Memorial Basketball Courts and volleyball court - \$10,000	B	S	G	D/V
	<b>Jaycee Park</b>				
21-16	Begin design of camping facilities, both primitive and modern camper style – \$12,000.00	B	S	G	D / V
21-17	Construct park shelter/restroom facility and parking lot on east end of park – \$50,000.00				
	<b>Calbert Way Park</b>				
21-18	Arbor Day Tree Planting - \$200.00	B	S	G	D/V
	<b>Walter &amp; Eleanor Ballard Family Park</b>				
21-19	Arbor Day Tree Planting - \$200.00	B	S	G	D / V
	<b>Other Improvements</b>				
21-20	Purchase additional Picnic Tables - \$3,000	B		G	D / V
<b>2022</b>					
	<i>Incomplete projects moves to 2022</i>				
	<b>Administrative</b>				
22-1	Training - Send FT staff to IPRA Annual Conference	B	S		
22-2	Increased budget – Work with the City of Greencastle elected officials on a strategy to procure additional funding towards parks department staffing needs due to addition of a recreational facility 1. Office secretary 2. Programmers 3. Maintenance	B	S		D/V
22-3	Annual Brochure - Release two per year	B	S		
22-4	End-of-the-Year Transfer - \$15,000 to Park Non-Reverting Capital Fund	B			
	<b>Robe-Ann Park</b>				
22-5	Construct shelter on concrete slab located on Clearwater corner - \$15,000.00	B	S	G	D/V
22-6	Greencastle Aquatic Center - Purchase 12 Chaise Lounges for - \$3,400	B	S	G	D/V
	<b>Big Walnut Sports Park</b>				
22-7	Install lights with timer to illuminate Keith Carr Memorial Basketball Courts - \$15,000.00	B	S	G	D/V
22-8	Continue ADA Improvements within park	B	S	G	D/V
	<b>Jaycee Park</b>				
22-9	Continue ADA Improvements within park	B	S	G	D/V
22-10	Pave w/apshalt drive through park – \$50,000.00	B	S	G	D / V
22-11	Construct pathway to Jaycee Park from Ballard Lane (possible IDNR Recreation Trails Grant)	B	S	G	D / V
	<b>Other Improvements</b>				
22-12	<b>Arbor Day Project</b> – Plant 16 trees throughout park system	B	S	G	D/V



<b>22-13</b>	Purchase w/Trade a new 60” mower for use in Robe-Ann Park - \$11,000.00	<b>B</b>			
<b>22-14</b>	Purchase additional Picnic Tables - \$4,000	<b>B</b>		<b>G</b>	<b>D / V</b>
<b>22-15</b>	End-of-the-Year Transfer to Park Non-Reverting Capital Fund - \$15,000.00	<b>B</b>			

<b>2022 +</b>					
	<b>Incomplete projects moves to 2022</b>				
	<b>Other Improvements</b>				
<b>22+ 1</b>	Jaycee Park – to go along with the remodeled community building/nature center and campground, install adventure course. This could include ropes course and zip-line across the pond - \$120,000.00	<b>B</b>	<b>S</b>	<b>G</b>	<b>D/V</b>
<b>22+ 2</b>	Investigate the ownership of the quarry property adjacent to Robe-Ann Park and desire to form a partnership to turn the property into a recreational campus connecting Robe-Ann Park to the Greencastle Community School Corporation -	<b>B</b>	<b>S</b>	<b>G</b>	<b>D/V</b>
<b>22 + 3</b>	Seek Engineer to help draft master plan and file a Land & Water Conservation Fund Grant for the construction Quarry Project, to include: <ul style="list-style-type: none"> <li>1. Make pond improvements which will allow better fishing access to pond</li> <li>2. Investigate and install ADA fully accessible fishing facilities.</li> <li>3. Construct accessible pathways to different areas of the pond</li> <li>4. Stock pond on an annual basis</li> </ul>	<b>B</b>	<b>S</b>	<b>G</b>	<b>D / V</b>
<b>22 + 4</b>	Big Walnut Sports Park - Install additional lighting over youth sports fields <ul style="list-style-type: none"> <li>1. Greencastle Boys Baseball</li> <li>2. Greencastle Girls Softball</li> <li>3. Putnam County Youth Soccer Association</li> </ul>	<b>B</b>	<b>S</b>	<b>G</b>	<b>D / V</b>

