A large, stylized outline of the letter 'M' is centered on the page. To the left of the 'M', there are three five-pointed stars of varying sizes arranged vertically. To the right of the 'M', there is a volleyball. The background is a dark gray with a fine, repeating pattern of small white dots.

MI LEGENDS VOLLEYBALL CLUB COLLEGE RECRUITMENT PLAYBOOK

A STEP-BY-STEP GUIDE FOR FAMILIES

ATHLETICS • ACADEMICS • LEADERSHIP

GOALS OF THE WEBINAR

- DEMYSTIFY THE RECRUITING PROCESS
- SHOW FAMILIES WHAT TO DO, WHEN, AND HOW
- PROVIDE CHECKLIST + PREWORK
- PREPARE FOR ONE-ON-ONE MEETINGS



COLLEGE VOLLEYBALL LANDSCAPE

- NCAA DIVISION I — ELITE, COMPETITIVE, LIMITED SCHOLARSHIPS
- NCAA DIVISION II — BALANCE, SCHOLARSHIPS + AID
- NCAA DIVISION III — NO ATHLETIC \$, STRONG ACADEMICS/AID
- NAIA — FLEXIBLE, ATHLETIC SCHOLARSHIPS AVAILABLE
- JUNIOR COLLEGE — TRANSFER PATHWAY, AFFORDABLE

An aerial photograph of a basketball court, showing the court lines and the surrounding area. A large, semi-transparent circular graphic is overlaid on the court, centered on the key. The text "NCAA ELIGIBILITY CENTER" is written in white, bold, sans-serif capital letters across the center of the court.

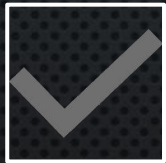
NCAA ELIGIBILITY CENTER

WHAT IT IS

THE OFFICIAL CERTIFICATION ORGANIZATION FOR THE NCAA

DETERMINES IF STUDENT-ATHLETES MEET ACADEMIC AND AMATEURISM REQUIREMENTS TO
COMPETE IN DIVISION I OR II

PURPOSE



Confirms athletes took
the correct high school
core courses



Reviews GPA and
standardized test scores
(if required)



Verifies amateur status



Required before an
athlete can practice,
compete, or receive
scholarships at NCAA DI
or DII schools

REGISTRATION TIMELINE

- FRESHMAN YEAR: REGISTER FOR A FREE PROFILE PAGE ACCOUNT AT ELIGIBILITYCENTER.ORG
- SOPHOMORE YEAR: TRANSITION YOUR PROFILE PAGE TO A CERTIFICATION ACCOUNT AND ASK YOUR COUNSELOR TO UPLOAD OFFICIAL TRANSCRIPTS (CERTIFICATION ACCOUNT (FOR DI/DII) OR PROFILE PAGE (FOR DIII/UNDECIDED))
 - *PAY THE FEE (\$100 FOR U.S. STUDENTS; FEE WAIVERS AVAILABLE)
- JUNIOR YEAR: CONFIRM TRANSCRIPTS/TEST SCORES ARE SUBMITTED AND SCHEDULE OFFICIAL/ UNOFFICIAL VISITS
- SENIOR YEAR: COMPLETE FINAL CERTIFICATION BEFORE COLLEGE ENROLLMENT

RECRUITING FOCUS

- FRESHMAN: FOCUS ON SKILLS + GRADES
- SOPHOMORE: BUILD PROFILE, START OUTREACH
- JUNIOR: PRIME RECRUITING YEAR, VISITS, HIGHLIGHT UPDATES
- SENIOR: OFFERS, COMMITMENTS, JUCO/NAIA OPTIONS

NCAA DIVISION I & II COURSE REQUIREMENTS

DIVISION I (16 CORE COURSES)

- ENGLISH: 4 YEARS
- MATH (ALGEBRA I OR HIGHER): 3 YEARS
- NATURAL/PHYSICAL SCIENCE (ONE MUST BE LAB SCIENCE): 2 YEARS
- ADDITIONAL ENGLISH/MATH/SCIENCE: 1 YEAR
- SOCIAL SCIENCE: 2 YEARS
- ADDITIONAL COURSES: 4 YEARS (FROM ANY OF THE ABOVE INCLUDED FOREIGN LANGUAGE, COMPARATIVE RELIGION OR PHILOSOPHY)

DIVISION II (16 CORE COURSES)

- ENGLISH: 3 YEARS
- MATH (ALGEBRA I OR HIGHER): 2 YEARS
- NATURAL/PHYSICAL SCIENCE (ONE MUST BE LAB SCIENCE): 2 YEARS
- ADDITIONAL ENGLISH/MATH/SCIENCE: 3 YEARS
- SOCIAL SCIENCE: 2 YEARS
- ADDITIONAL COURSES: 4 YEARS (FROM ANY OF THE ABOVE INCLUDING FOREIGN LANGUAGE, COMPARATIVE RELIGION, OR PHILOSOPHY)

GPA AND TEST SCORES

- DIVISION I: MINIMUM 2.3 GPA IN CORE COURSES + SLIDING SCALE OF GPA/TEST SCORES (HIGHER GPA CAN OFFSET LOWER ACT/SAT, AND VICE VERSA).
- DIVISION II: MINIMUM 2.2 GPA IN CORE COURSES + TEST SCORE REQUIREMENT
- DIVISION III: NO ELIGIBILITY CENTER REQUIREMENT BUT STRONG ACADEMICS ARE NEEDED FOR ADMISSION

CHOOSING A SCHOOL

THINGS TO CONSIDER:

- SCHOOL SIZE
- SCHOOL LOCATION
- MAJOR AND MINORS
- COST OF ATTENDANCE
- ADMISSIONS REQUIREMENTS
- CULTURE AND AFFILIATIONS
- STUDENT TO FACULTY RATIO
- TEAM NEEDS

ATHLETIC & ACADEMIC PREP

ATHLETIC PREP-WORK

- HIGHLIGHT VIDEO: 2–4 MINS, BEST PLAYS FIRST
- HUDL/YOUTUBE/FIELDLVL PROFILES
- UPDATE EVERY 3–4 MONTHS
- SHOWCASE TOURNAMENTS + EXPOSURE EVENTS

ACADEMIC PREP

- MAINTAIN COMPETITIVE GPA THROUGH ALL FOUR YEARS
- ACT/SAT DOES MATTER
- KEEP TRANSCRIPTS AND TEST SCORES ORGANIZED

SCHOLARSHIPS & AID



This Photo by Unknown Author is licensed under [CC BY-SA](https://creativecommons.org/licenses/by-sa/4.0/)

- FULL RIDES ARE RARE
- MOST = ATHLETIC + ACADEMIC AID
- FAFSA + SCHOOL-BASED SCHOLARSHIPS
- ASK THE RIGHT QUESTIONS ON VISITS

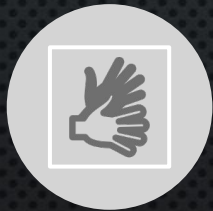
COMMUNICATION WITH COACHES



Write short,
professional emails
(video + schedule)



Clean, positive
social media
presence



Phone/text etiquette
(confident, polite,
prompt)



DI contact allowed
June 15 after 10th
grade



RECRUITING MINDSET

- REJECTION IS NORMAL, IT ONLY TAKES ONE YES
- EFFORT + PERSISTENCE MATTER
- FIT > LEVEL OR PRESTIGE

PREWORK ASSIGNMENT

*REQUIRED FOR ONE-ON-ONE MEETINGS



CREATE A PLAYER
RESUME



COLLECT 2–3 MIN
HIGHLIGHT VIDEO



IDENTIFY 10–15
SCHOOLS OF
INTEREST



REGISTER WITH
NCAA ELIGIBILITY
CENTER (9TH+)

MI LEGENDS SUPPORT

- GUIDANCE WITH VIDEO + RESUME
- ONE-ON-ONE PLANNING MEETINGS
- COLLEGE COACH CONNECTIONS
- ONGOING MENTORSHIP

NEXT STEPS



Complete checklist + prework



Book your one-on-one with the Recruitment Team



Stay consistent! Remember this is a journey