

U.S. 54 Expansion from U.S. 83 to Tucker Rd

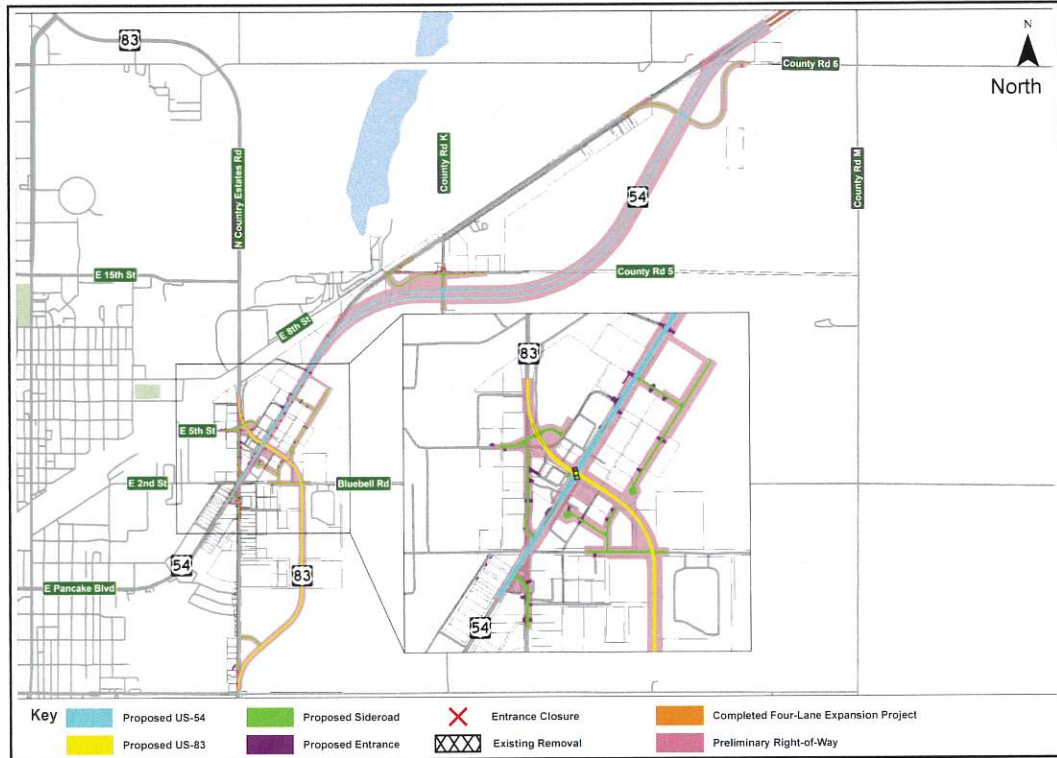
Seward County



Visit the project webpage for the latest information:
ksdot.gov/us-54-expansion-seward-county



SELECTED CORRIDOR & INTERSECTION

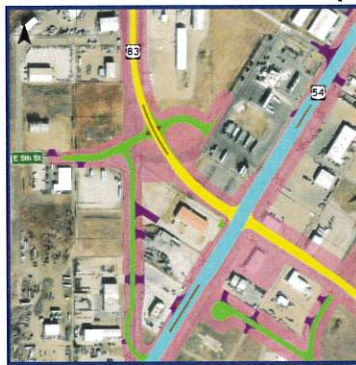


Detailed concept

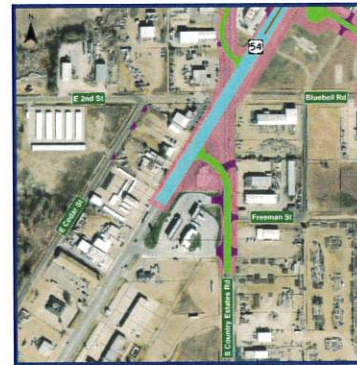
PROJECT CHANGES SINCE APRIL 2025 (most recent concept)



Shifted the side road connecting County Road 6 to Old U.S. 54 and added a right turn taper from W.B. U.S. 54 to turn west onto County Road 6.



Extended E. 5th St. improvement further west and east



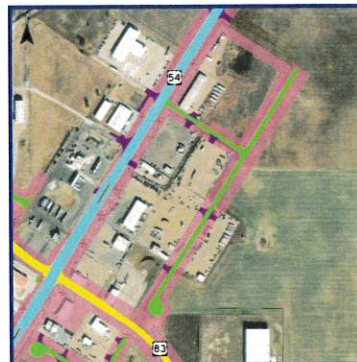
Added additional side roads in the southern part of the project, reconnected S. Country Estates Rd to U.S. 54



Extended U.S. 83 improvements south to Pine Street, shifted the connecting side road to the south



Added additional side roads to connect to Bluebell Rd



Added side roads northeast of the U.S. 54/83 intersection



Extended and shifted County Rd 5 and extended work along Old U.S. 54

**U.S. 54 Expansion from
U.S. 83 to Tucker Rd**
Seward County



Visit the project webpage for the latest information:
ksdot.gov/us-54-expansion-seward-county

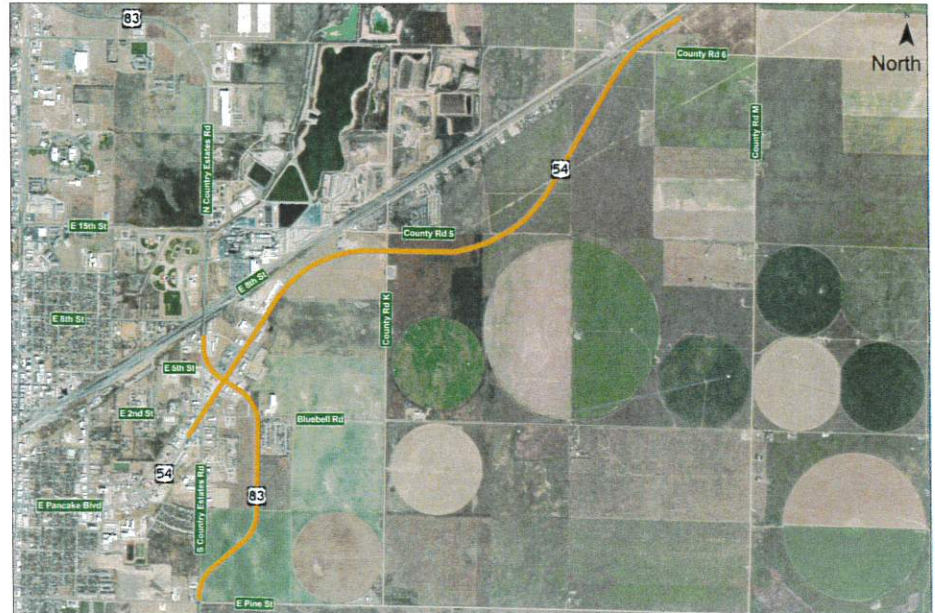


Spring 2026

PROJECT OVERVIEW

Near the existing U.S. 54/83 intersection, a five-lane section is being designed to go through the city limits for about one mile along the existing U.S. 54 alignment. It then transitions into a divided four-lane highway along a new alignment around Garrettsville and connects with the existing four-lane highway east of Liberal.

This includes a major intersection improvement on U.S. 54/83 and realignment of U.S. 83 to improve the angle of the intersection and traffic flow.



Project Location



U.S. 54/83 (Former Six Points) intersection concept

PROJECT DETAILS

Cost Estimate	\$62 Million
Length	Approximately 3 miles
Scope	Preliminary engineering to reconstruct and expand U.S. 54 from the U.S. 54/83 (former Six Points) intersection in Liberal northeast to Tucker Road
Status	Preliminary Engineering Design

PROJECT CONTACT

Samantha Peters-Brown
Public Involvement Specialist
KDOT.Engagement@ks.gov



This information can be made available in alternative accessible formats upon request. For information about obtaining an alternative format, contact the KDOT Division of Communications, ksdot.publicinfo@ks.gov or phone 785-296-3585 (Voice)/Hearing Impaired – 711.