

# AMAZON FACILITIES

## OVERVIEW

The Ashford Formula has been used as a densifier, hardener and dustproofing agent on exposed concrete floors for more than 70 years.

It has been used in data centers, large warehouses, distribution and logistic centers, as well as in production and manufacturing facilities.

What do these types of facilities have in common? A need for a durable concrete floor that not only looks good, is easy to clean and maintain, but is also **dustproof**. Preventing concrete dusting is key to ensuring sensitive equipment and finished goods are not compromised in any way.



DENSIFIES



DUSTPROOFS



GLOSSY SHEEN



EASY TO CLEAN

## PROJECT LIST

The following list of Amazon facilities were treated with the Ashford Formula (continued on back):

**Warehouse/Distribution**  
2.3 million ft<sup>2</sup> / 213,700 m<sup>2</sup>  
Denver, CO, USA

**Fulfillment Center**  
2.3 million ft<sup>2</sup> / 213,700 m<sup>2</sup>  
North Las Vegas, NV, USA

**Warehouse/Distribution**  
1.9 million ft<sup>2</sup> / 178,000 m<sup>2</sup>  
Sevilla, Spain

**Warehouse/Distribution**  
1.8 million ft<sup>2</sup> / 173,700 m<sup>2</sup>  
Missassauga, ON, Canada

**Fulfillment Center**  
1.5 million ft<sup>2</sup> / 139,300 m<sup>2</sup>  
Thornton, CO, USA

**Non-Sort Facility**  
1.3 million ft<sup>2</sup> / 120,800 m<sup>2</sup>  
Homestead, FL, USA

**Warehouse/Distribution**  
1.3 million ft<sup>2</sup> / 120,800 m<sup>2</sup>  
Las Vegas, NV, USA

**Fulfillment Center**  
1.2 million ft<sup>2</sup> / 115,800 m<sup>2</sup>  
Fall River, MA, USA

**Warehouse/Distribution**  
1.0 million ft<sup>2</sup> / 93,000 m<sup>2</sup>  
Calgary, AB, Canada

**Fulfillment Center**  
1.0 million ft<sup>2</sup> / 93,000 m<sup>2</sup>  
Romulus, MI, USA

**Warehouse/Distribution**  
950,000 ft<sup>2</sup> / 91,700 m<sup>2</sup>  
San Bernadino, CA, USA

**Fulfillment Center**  
900,000 ft<sup>2</sup> / 83,600 m<sup>2</sup>  
Aurora, IL

**Fulfillment Center**  
880,000 ft<sup>2</sup> / 81,700 m<sup>2</sup>  
Rialto, CA, USA

**Warehouse/Distribution**  
750,000 ft<sup>2</sup> / 67,500 m<sup>2</sup>  
Redlands, CA, USA

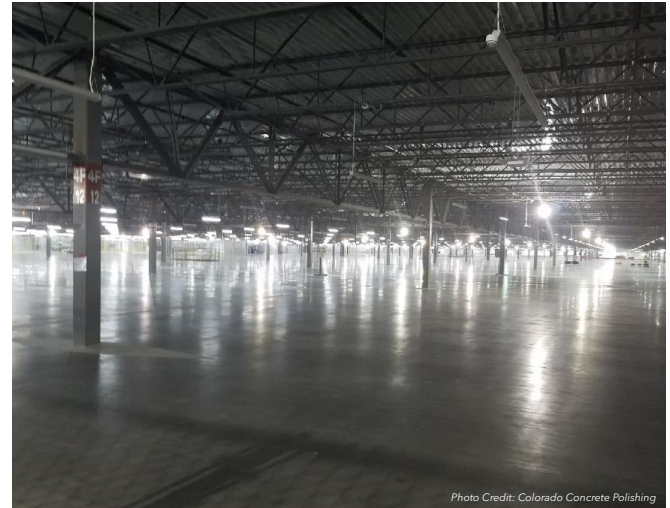


Photo Credit: Colorado Concrete Polishing

## PROJECT HIGHLIGHT

Name: **Amazon Fulfillment Center**  
Location: **Denver, CO, USA**  
Area: **2.3 million ft<sup>2</sup> / 213,670 m<sup>2</sup>**  
Completed: **2019**

The Ashford Formula has been used to densify, harden and dustproof more than 20,000,000 ft<sup>2</sup> (1,858,000 m<sup>2</sup>) of Amazon facilities worldwide.

In Denver, CO, USA, the Ashford Formula was applied to more than two million square feet of exposed concrete in this state-of-the-art facility. This particular fulfillment center employs more than 1,500 people and warehouses several million items at a time.

The enormity of the investment into this operation demands a concrete surface that will stand up to the traffic of people, forklifts, and robotic machines criss-crossing the warehouse everyday. Also of utmost importance is protecting the merchandise housed within the warehouse from concrete dust, a consequence of untreated concrete. Lastly, the sheer size of the center requires a floor that is easy to clean and maintain. The Ashford Formula is the only densifier in the world that can provide these benefits with a one-time, permanent application that will last for the life of the concrete.

With the Ashford Formula, there is no added expense or downtime for recoating or replacing topical treatments, meaning productivity will never have to be halted because of an inferior concrete surface.

This is Amazon, after all, where their people, products and innovation are always on the move.



1203 Spring Creek Place, Springville, UT 84663 USA  
800.998.5664 / 801.489.5663  
[www.curecrete.com](http://www.curecrete.com) / [www.ashfordformula.com](http://www.ashfordformula.com) / [www.retroplate.com](http://www.retroplate.com)

## PROJECT LIST (Continued)

### Distribution Center

500,000 ft<sup>2</sup> / 46,450 m<sup>2</sup>  
Pineville, NC, USA

### Warehouse/Distribution

500,000 ft<sup>2</sup> / 46,450 m<sup>2</sup>  
Goodyear, AZ, USA

### Fulfillment Center

500,000 ft<sup>2</sup> / 46,450 m<sup>2</sup>  
Dallas, TX, USA

### Warehouse Expansion

410,000 ft<sup>2</sup> / 38,000 m<sup>2</sup>  
Whitestown, IN, USA

### Warehouse/Distribution

360,000 ft<sup>2</sup> / 33,400 m<sup>2</sup>  
Moreno Valley, CA, USA

### Warehouse/Distribution

248,000 ft<sup>2</sup> / 23,000 m<sup>2</sup>  
Twinsburg, OH, USA

### Fulfillment Center

230,000 ft<sup>2</sup> / 21,360 m<sup>2</sup>  
North Haven, CT, USA

### Fulfillment Center

190,000 ft<sup>2</sup> / 17,650 m<sup>2</sup>  
New Castle, DE, USA

### Retail Parking

132,000 ft<sup>2</sup> / 12,260 m<sup>2</sup>  
Seattle, WA, USA

### Retail Parking

120,000 ft<sup>2</sup> / 11,150 m<sup>2</sup>  
Seattle, WA, USA

### Fulfillment Center

112,210 ft<sup>2</sup> / 10,425 m<sup>2</sup>  
Sady, Poznań County, Poland

## PROJECT SPOTLIGHT

Name: **Amazon Fulfillment Center**

Location: **North Las Vegas, NV, USA**

Area: **2.3 million ft<sup>2</sup> / 213,670 m<sup>2</sup>**

Completed: **2019**



Photo Credit: Brett Cline



Photo Credit: Brett Cline

**CURECRETE**

1203 Spring Creek Place, Springville, UT 84663 USA

800.998.5664 / 801.489.5663

[www.curecrete.com](http://www.curecrete.com) / [www.ashfordformula.com](http://www.ashfordformula.com) / [www.retroplate.com](http://www.retroplate.com)