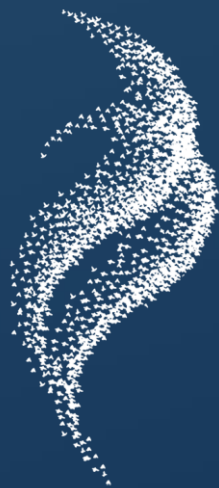




Suffolk
County Council



Norfolk
County Council



Norfolk
& **Suffolk**
Nature Recovery
Partnership

The Local Nature Recovery Strategy for Suffolk

Development and Implementation

Jen Burlingham – Norfolk and Suffolk Nature Recovery Partnership Manager

LNRS – Purpose and Objectives


“LNRS is a critical new tool for driving the national ambition to increase species abundance and reduce risk of species extinctions”.

CONTEXT AND LAW

- Introduced by the Environment Act 2021
- Every region of England has to produce one



LNRS



"The main purpose of the strategies is to identify locations to create or improve habitat most likely to provide the greatest benefit for nature and the wider environment."



So I'm thinking, you know, in the past,
it's been wildlife organisations

LNRS – 3 key words



OPPORTUNITY

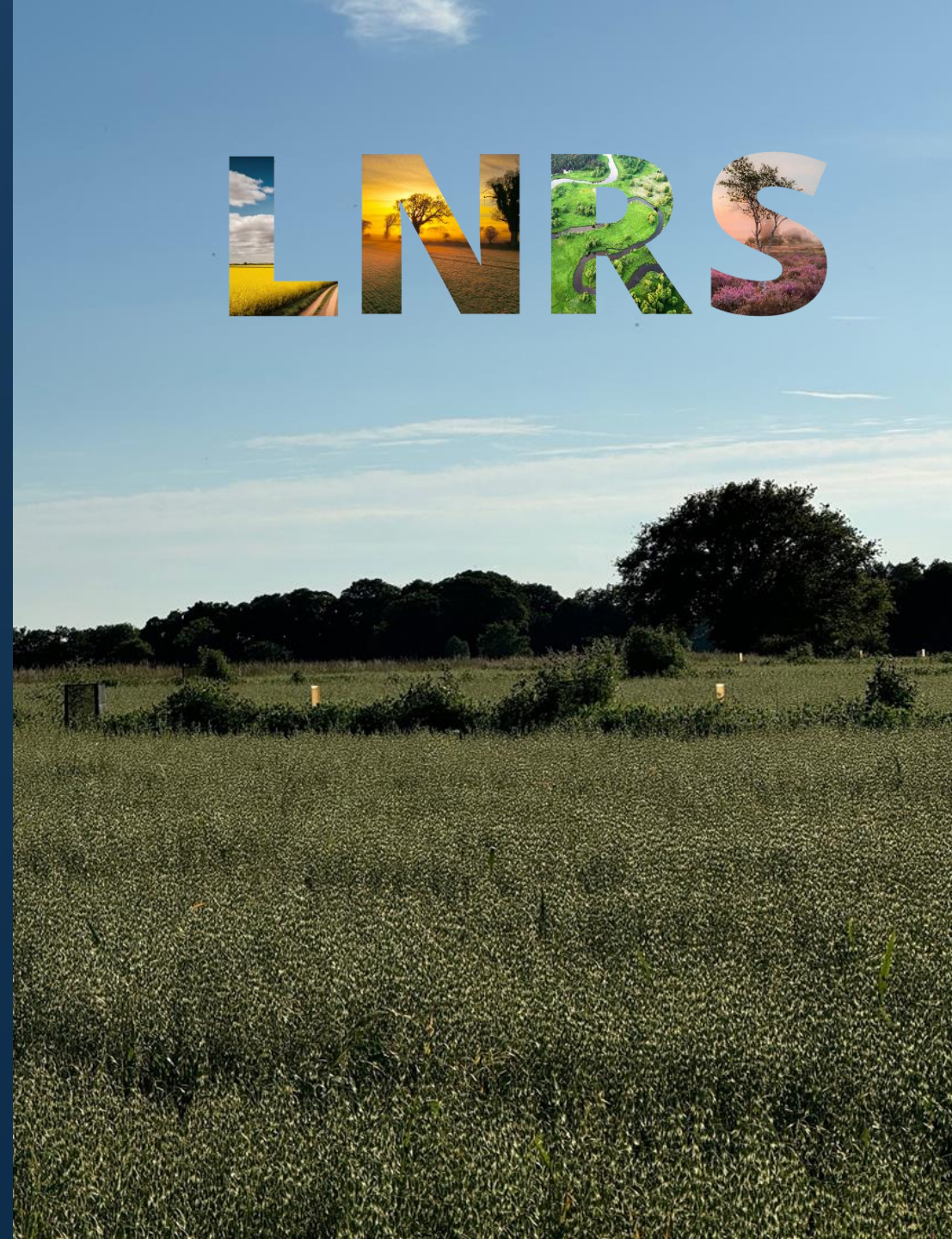
The LNRS identifies opportunities for nature recovery. Rather than tell you what must be done and where, it will tell you what COULD be done.

AMBITION

We need to make a change, but it is designed to align with existing guidance and policies, and to inform future documentation.

POTENTIAL

We aim to maximise the potential to contribute to nature recovery by linking into funding streams.



OVERSIGHT

Norfolk
Supporting
Authorities

Suffolk
Supporting
Authorities

Steering Group



EVIDENCE & EXPERTISE

Themed Working Groups

- Species & Biodiversity
- Mapping
- Land Management
- Coast & Water
- Planning (Norfolk)
- Planning (Suffolk)

General
Public

Sector Groups

- Town & Parish Councils
- Health & Wellbeing
- Business
- Community Groups



DELIVERY

Partnership Manager

Norfolk
LNRS Delivery
Team

Suffolk
LNRS Delivery
Team



**Norfolk
& Suffolk**
Nature Recovery
Partnership

*Approximately 300 members from
approximately 90 different
organisations*

Some of Our Member Organisations

Norfolk County Council

Norfolk Rivers Trust

Suffolk County Council

Essex and Suffolk Rivers Trust

Supporting Authorities

FWAG

Broads Authority

Norfolk Biodiversity Information
Service

Norfolk Wildlife Trust

Suffolk Biodiversity Information
Service

Suffolk Wildlife Trust

Norfolk National Landscapes

Natural England

Suffolk National Landscapes

University of East Anglia
(Environmental Sciences)

NFU

Environment Agency

CLA

Forestry Commission

LNRS Content and Process

Local nature recovery strategy review and republication cycle



LNRS Document Sections

The document is designed to be used as a whole strategy but also with the ability to be separated and combined into wider documentation across the 48 Responsible Authorities to support the national Nature Recovery Network



Outputs and Opportunities Identified

- Maps of what we have already - areas of particular importance for biodiversity **(APIB)**
- A description of the species and habitats that are most important – **which do we focus on?**
- Maps of **where we can improve or suggest actions could happen (ACB)** – these can be used to link into project development and funding mechanisms



10 Key Ambitions

1. **Create, enhance, and expand** priority habitats.
2. **Reconnect** fragmented landscapes.
3. **Recover and protect** key species.
4. **Support sustainable farming and land management.**
5. **Restore wetlands, rivers, and peatlands.**
6. **Safeguard and enhance** coastal habitats.
7. **Expand woodland and tree cover.**
8. **Integrate nature** into towns and cities.
9. **Empower** communities and landowners.
10. **Deliver co-benefits** for climate, health, and the economy.

What are measures?

“the practical actions that, if taken, would make positive contributions to delivering the nature recovery priorities” for example....



Tree planting or natural regeneration



Creation of roadside verges



Hedgerow regeneration



Wetland creation



Urban green roof creation



Removal of invasive species

The strategy identifies the following habitats as priorities for creation, restoration, and expansion:



Woodlands and trees: mixed deciduous (including ancient woodland), wet woodland, wood-pasture & parkland, scrub, traditional orchards.



Wetlands and freshwater: rivers, streams, ponds, lakes, fens, reedbeds.



Habitats in farmed landscapes: hedgerows, field margins, and features that improve connectivity.



Urban, built and garden environments: gardens, verges, green corridors, churchyards, open mosaic habitats.

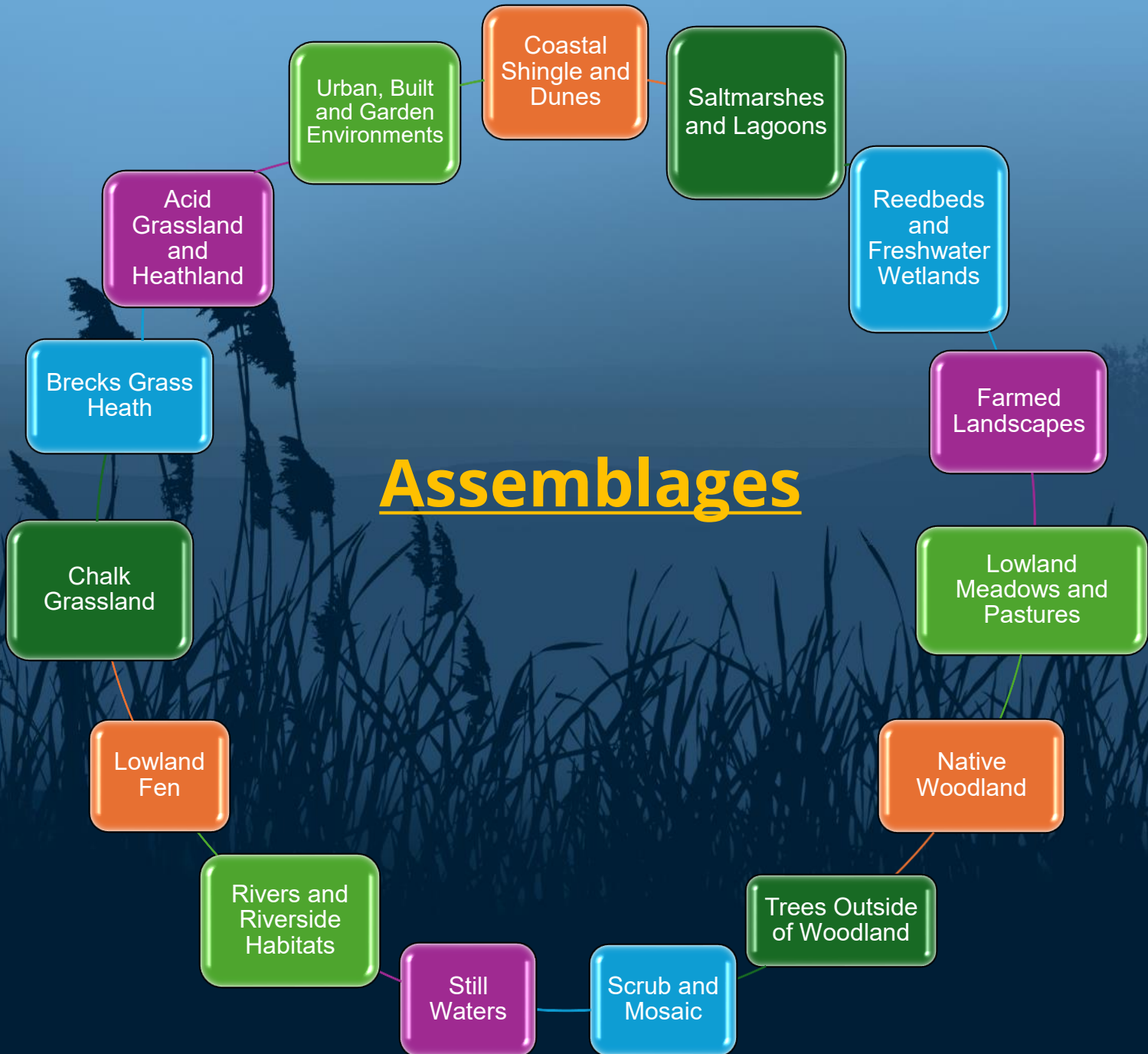


Coastal and estuarine: saltmarsh, intertidal mudflats, sand dunes, vegetated shingle, maritime cliffs & slopes, saline lagoons.



Heathland and grassland: acid, neutral and calcareous grasslands, Brecks grass heath, wet grassland

Assemblages





**Bark-sulphur
firedot**
*Caloplaca
flavorubescens*



**Basil-thyme case-
bearer**
Coleophora tricolor



Crested cow-wheat
*Melampyrum
cristatum*



Dwarf eelgrass
Zostera noltei



**Orange-fruited elm
lichen**
*Caloplaca luteoalba/
Gyalolechia
flavorubescens*



**Rosser's sac-
spider** *Clubiona
rosserae*



Scarce vapourer
Orgyia recens



Serotine bat
Eptesicus serotinus



Eurasian curlew
Numenius arquata



European eel
Anguilla anguilla



Fen raft spider
*Dolomedes
plantarius*



Hazel dormouse
*Muscardinus
avellanarius*



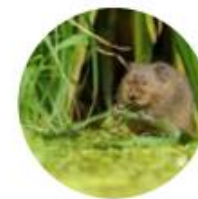
Starlet sea anemone
*Nematostella
vectensis*



Suffolk lungwort
Pulmonaria obscura



Tassel Stonewort
Tolypella intricata



Water vole
Arvicola amphibius



Kittiwake
Rissa tridactyla



Lapwing
Vanellus vanellus



**Little whirlpool
ramshorn snail**
Anisus vorticulus



**Narrow-mouthed
whorl snail**
Vertigo angustior



**White-clawed
crayfish**
*Austropotamobius
pallipes*

Key species

The LNRS identifies 21 key species for Suffolk, each with a profile of habitats and recovery measures.

Wider environmental benefits and co-benefits of nature recovery

Wider environmental benefits



Air quality



Capturing carbon



Clean water source



Erosion prevention



Flood mitigation



Improving marine environment



Managing climate resilience



Nutrient cycling



Pollination



Soil health

Co-benefits



Clean water source



Cooling urban areas



Cultural, heritage and aesthetic services



Erosion prevention



Flood mitigation



Food provision



Pest and disease control



Physical and mental wellbeing



Pollination



Raw materials

Opportunities Identified

LNRS – What it does NOT aim to do:

LNRSs are tools to drive
forward action to recover
nature



They will not be used to:

- require land managers or owners to make specific proposed land use changes – **this will remain their choice**
- identify areas to be given legal nature protections that create restrictions on how land can be used or managed – **LNRSs do not propose new nature reserves or any other kind of legal designation**

- place **new restrictions on developing land**
- prevent nature conservation work in areas not prioritised
- determine regulatory decisions

Timeline

October 2023

Work began on data gathering, engagement and mapping

2023 - Dec 2024

LNRS development – prioritisation of habitats and species, development of measures and mapping

Jan 2025

Draft document and map taken through Pre-consultation phase with Supporting Authorities

April – June 2025

Public consultation phase of LNRS and mapping

Sept 2025

Pre-publication phase – demonstrating governance processes and responses to consultation

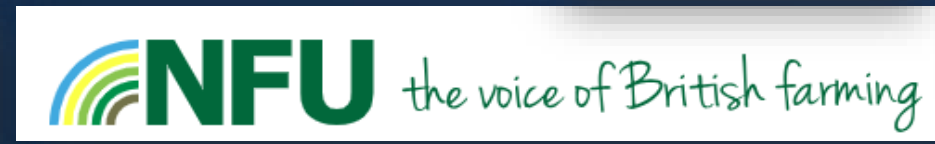
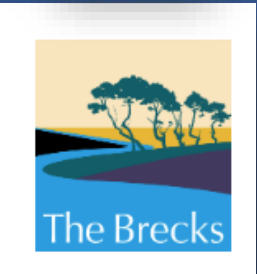
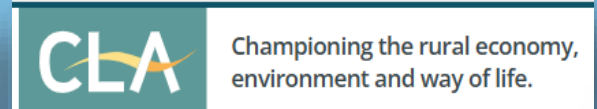
October 2025

Publication and launch of LNRS for Suffolk and Norfolk



Engagement and Consultations

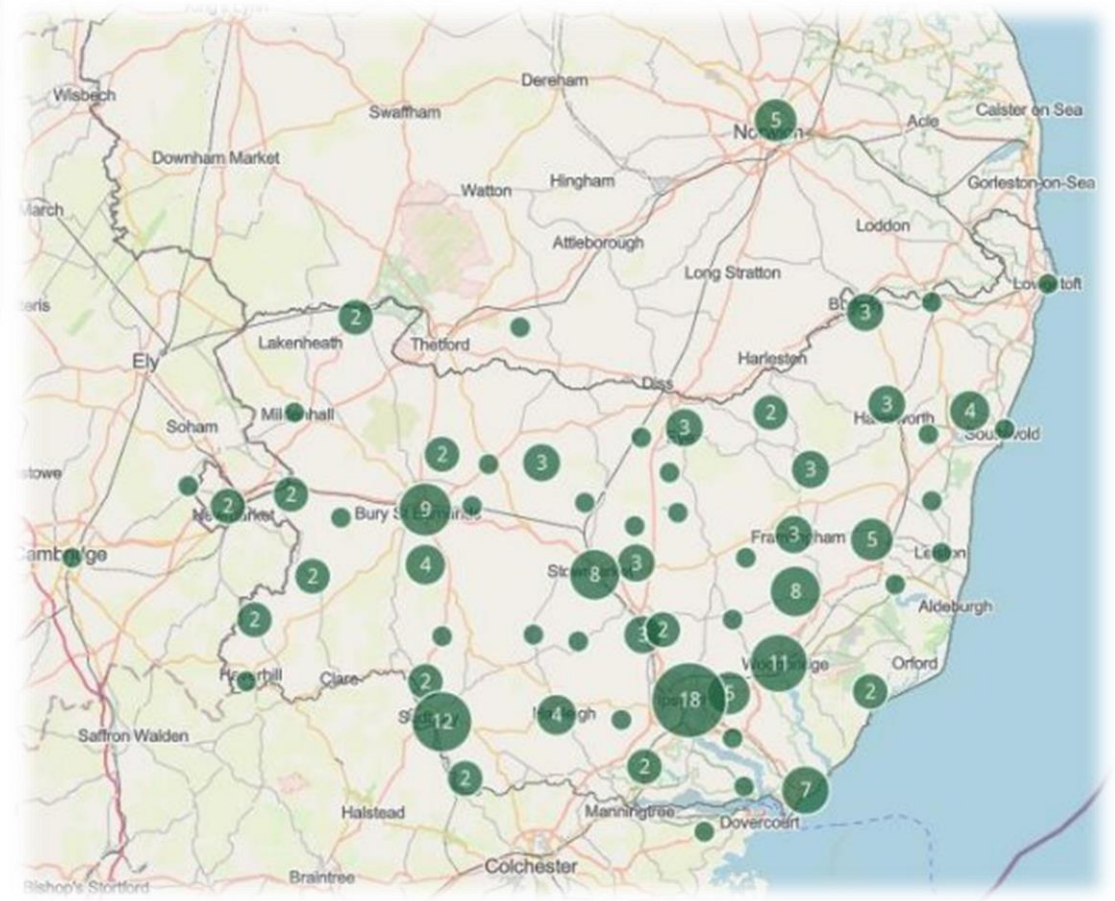






In total, across both counties:

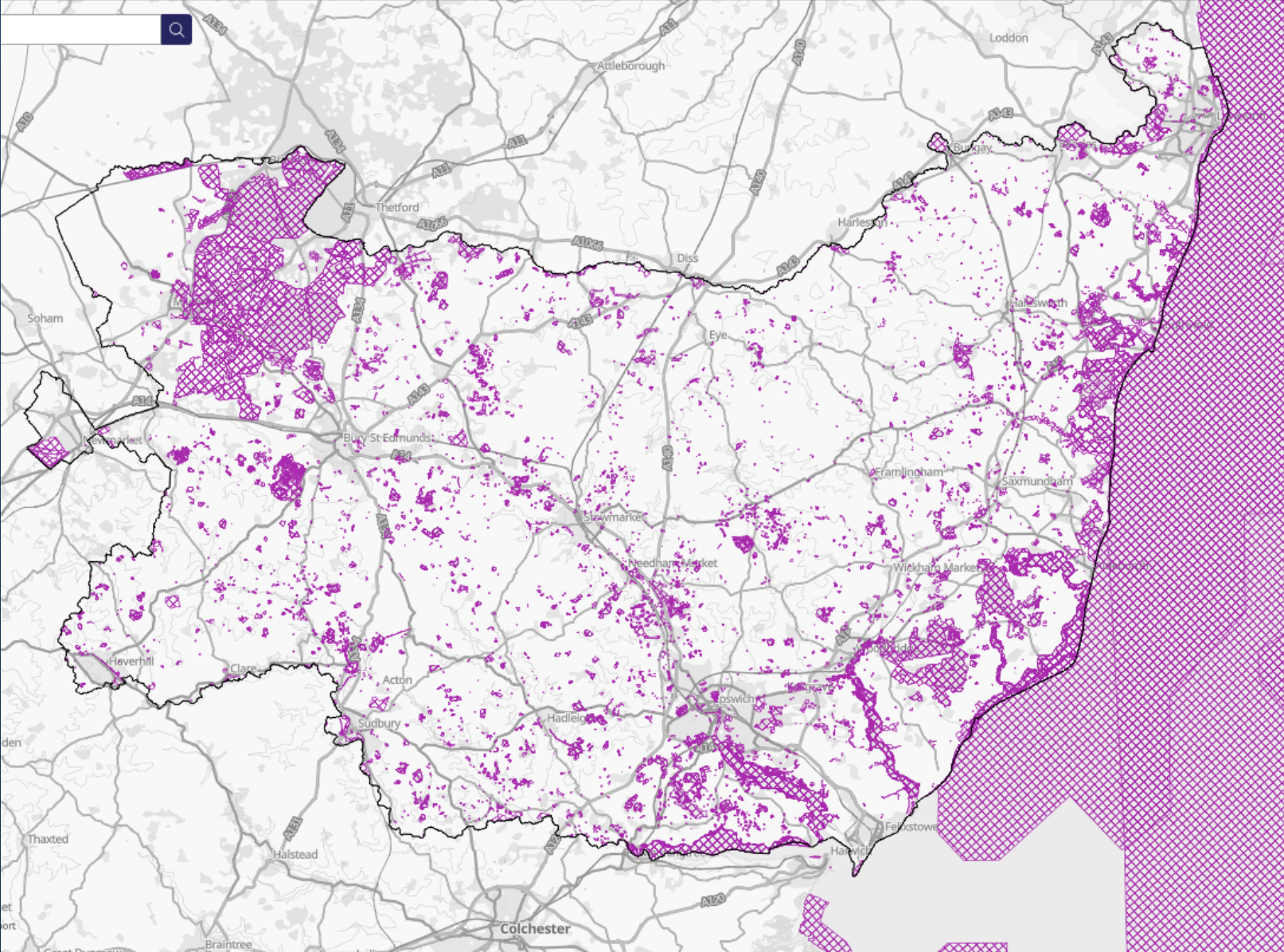
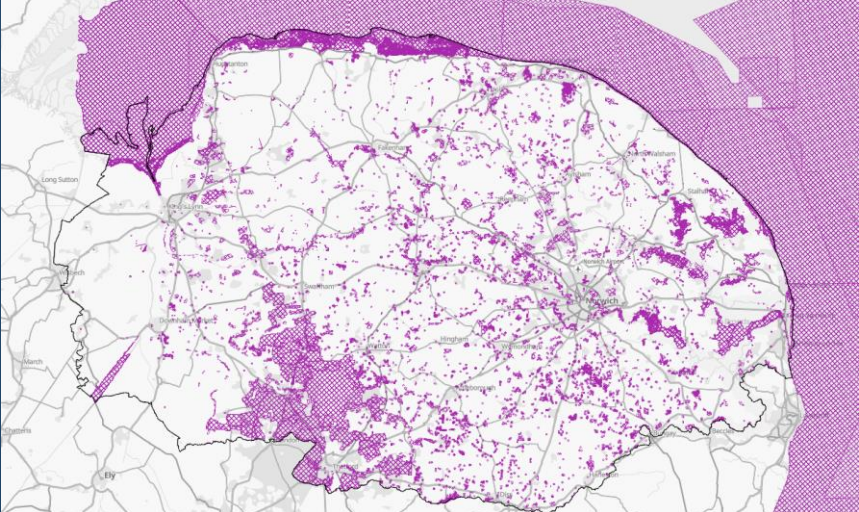
- 219 farmers, landowners or land managers
- 118 'other'
- 117 residents
- 32 community groups
- 10 local authorities
- 41 charities
- 5 government bodies
- 4 town or parish councils
- 4 businesses
- 1 school



HIGHLIGHTS OF CONSULTATION DATA ACROSS BOTH COUNTIES

- **78% agreed or strongly agreed** that the purpose and aims of the Norfolk or Suffolk LNRS are clear
- **76% agreed or strongly agreed** that the strategies explain what nature recovery could take place in each area
- **73% agreed** the draft strategies were easy to understand
- **67% agreed** the mapping was easy to understand, and 60% that it was easy to use
- **90% agreed** with proposed habitat priorities and measures
- **88% agreed** with identified priority species and measures

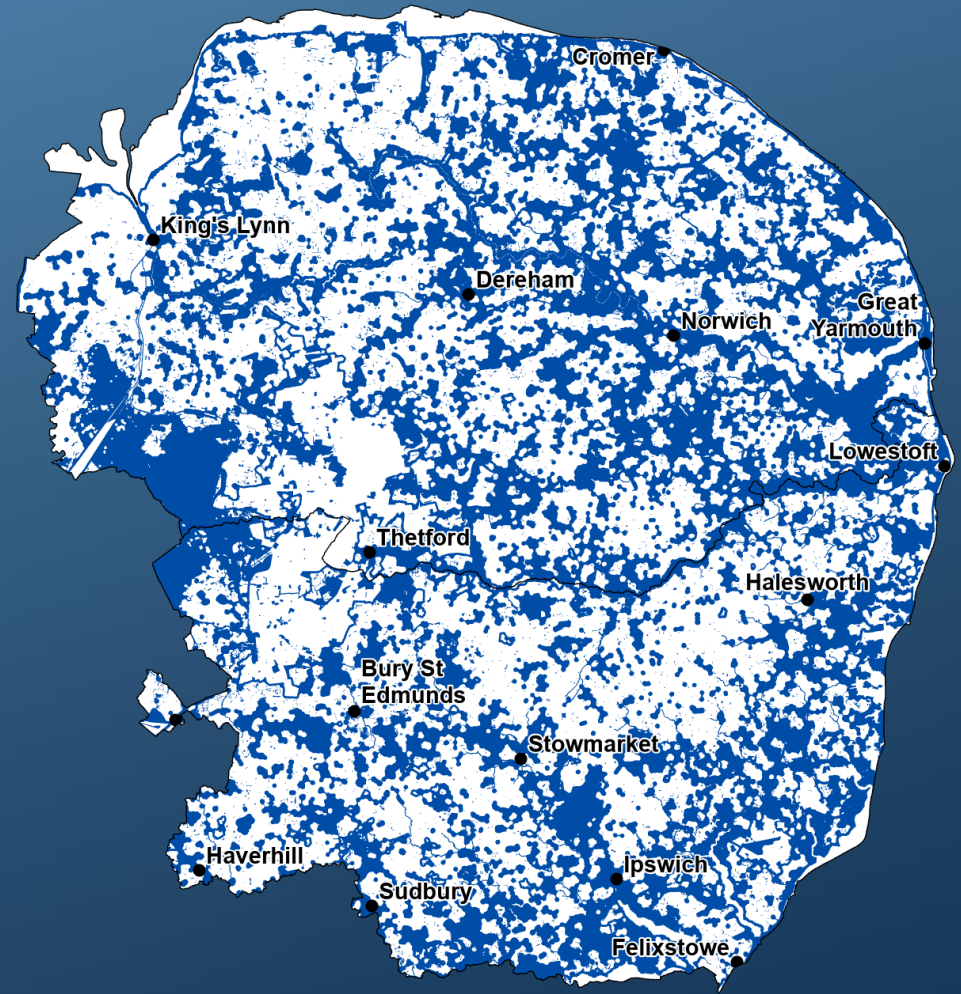
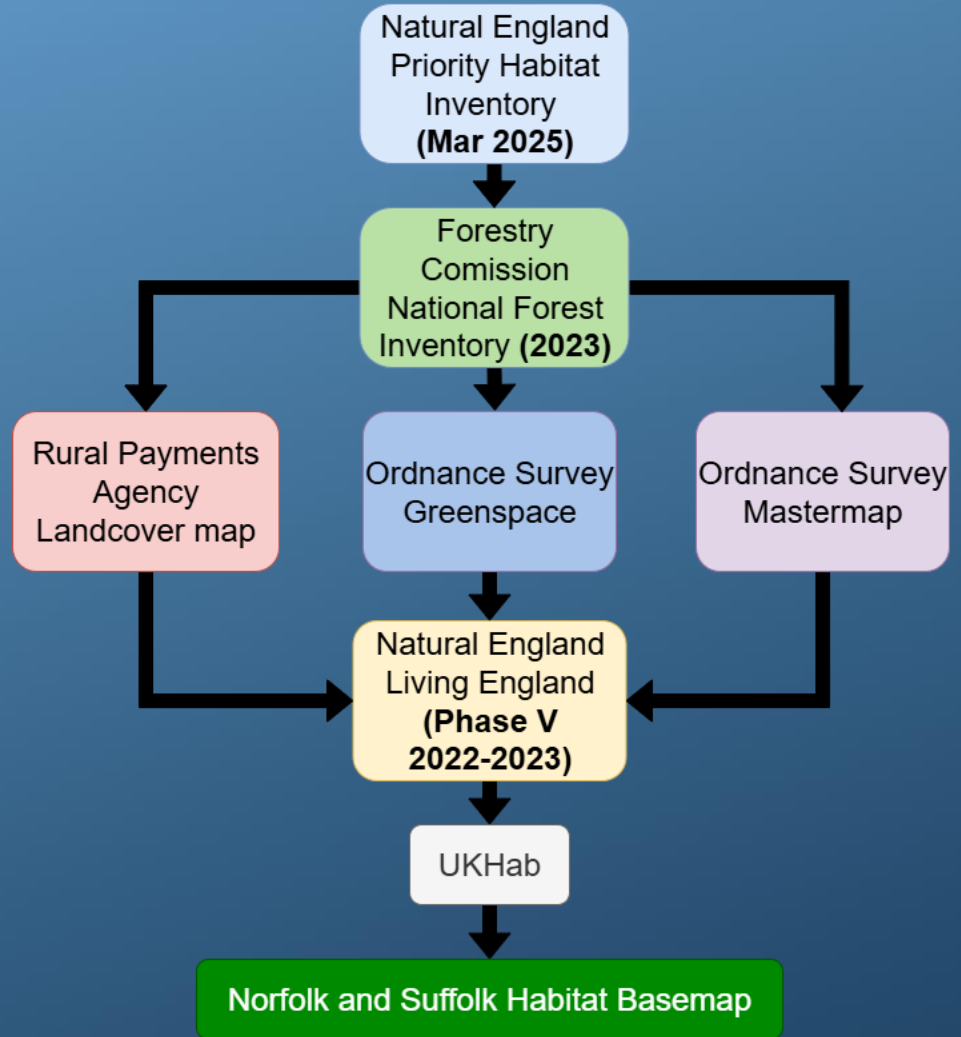
Areas of Particular Importance for Biodiversity



Local
Habitat
Map

Mapping Rules and Generating Strategic Areas

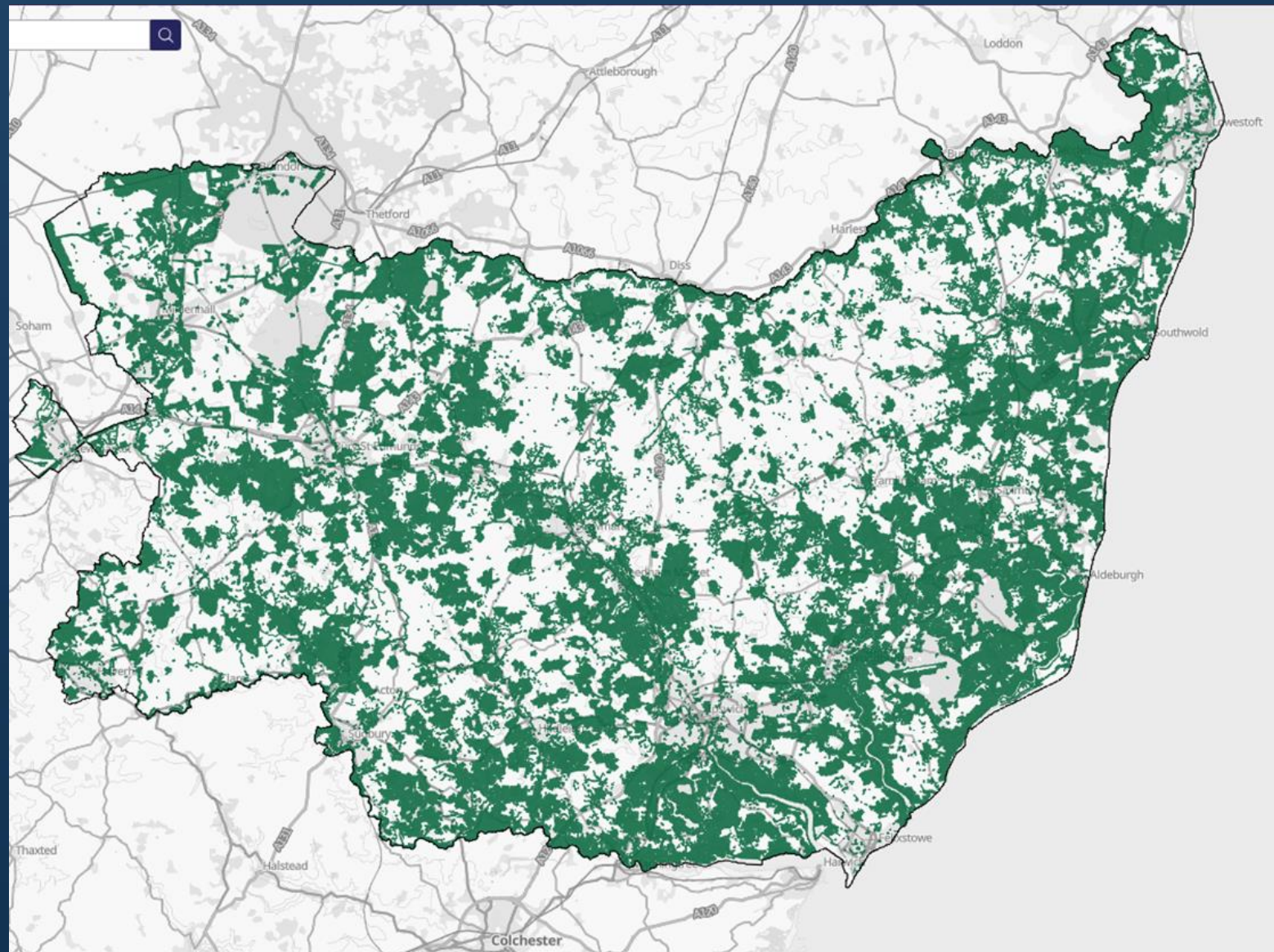
Percentage Coverage of Area: **44%**



Areas THAT COULD BECOME of Particular Importance for Biodiversity (ACB)



Local Habitat Map



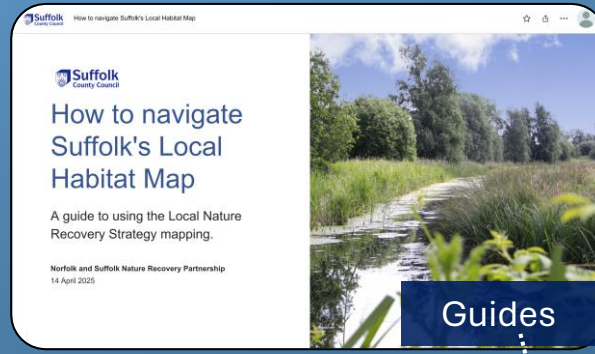


Mapping of Potential Measures



Wider Environmental Benefits

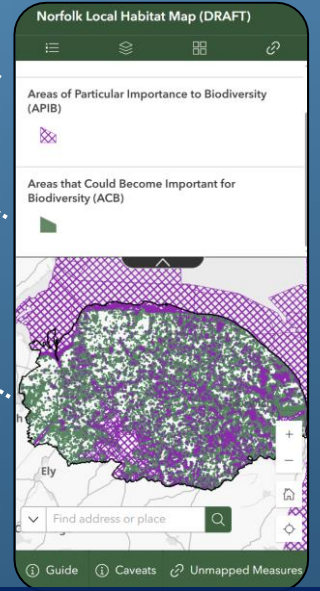
Outputs: Mapping Toolkit & Dashboard



New mobile view and IOS bug fix

Accessibility improvements to colour, pop-ups and layout

Reduced data duplication to improve responsiveness

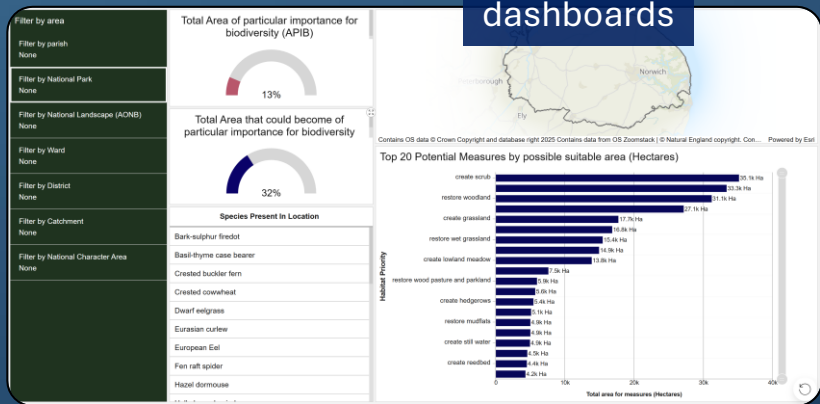


Improved map accessibility and useability

Integration with stakeholder platforms

Mapping toolkit

Potential to integrate funding and project info in future



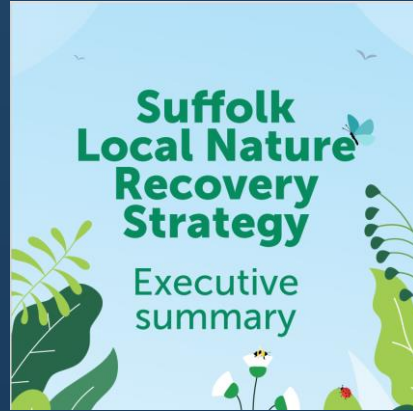
dashboards



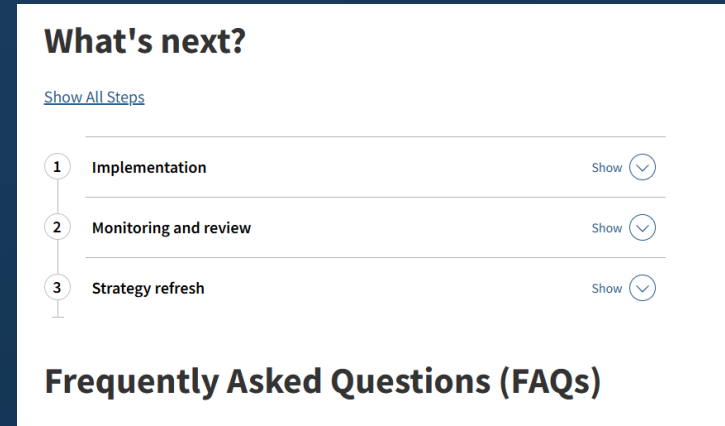
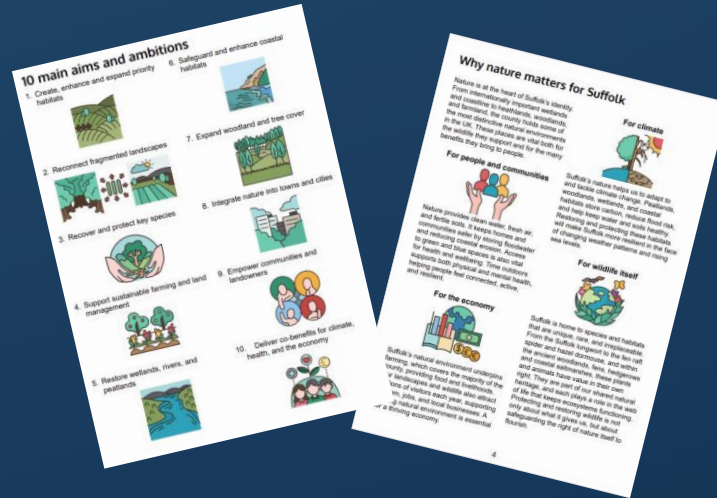
Tools to help find relevant measures

Local Nature Recovery Strategy (LNRS) - Suffolk County Council

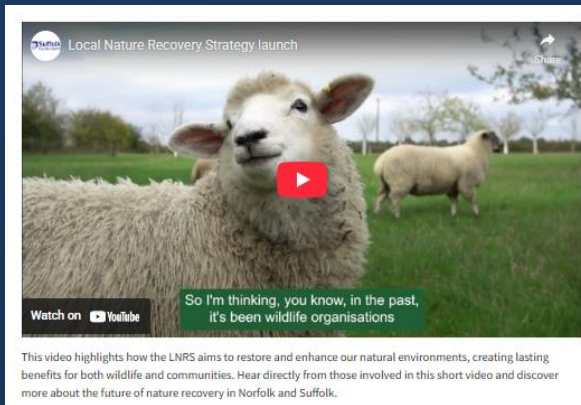
Full strategy documents, and sections



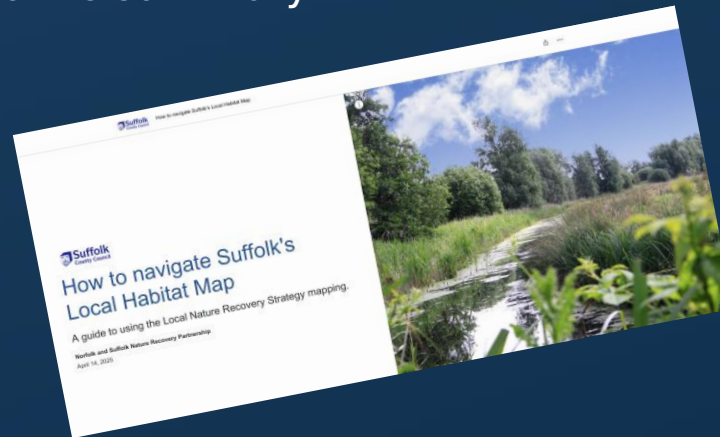
Executive summary



FAQs and updates



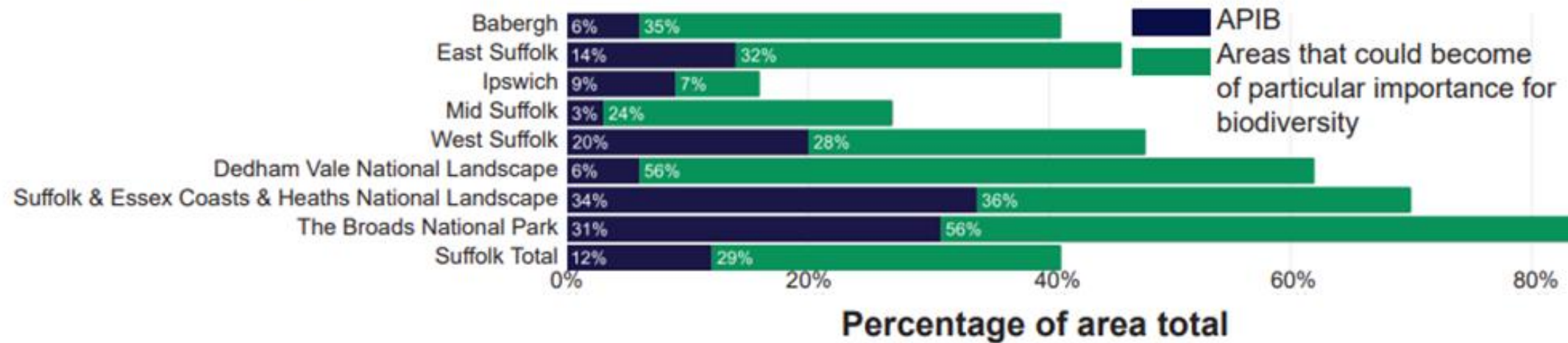
Celebration video



Mapping guides, dashboards and technical documents



Proportions of Suffolk districts and Protected Landscapes allocated to APIB and ACB



National Network

Nature Recovery Opportunities Across England: A National Picture Emerging from Published LNRs



Published
LNRs as of
10 Feb 26

Our aims

Aims in the LNRS are designed to guide investment and action, not to impose new restrictions.

They include:

- Restoring more habitats to **favourable condition**, particularly those that are fragmented or degraded.
- **Expanding the extent of priority habitats**, for example creating new wetlands, woodlands, and grasslands in strategic locations.
- **Strengthening connections** between habitats through ecological corridors, hedgerows, rivers, and coastal systems.
- **Improving conditions** for key species, ensuring their populations are stable or increasing.
- **Delivering wider benefits** such as carbon storage, flood protection, cleaner water, and healthier soils.





Next Steps – Defra focus

It is envisaged the RAs will take on a role in the delivery of LNRSs:

- 1) Lead and convene a **delivery partnership**
- 2) Embed LNRS into **local decision making**
- 3) Identify **strategic projects** and facilitate **project development**
- 4) **Monitor and report** on delivery of LNRS priorities

NSNRP have initiated this process:

- Revisited and reviewed vision
- Proposal of priorities
- Development of key action areas linked to aims
- Requirements for mapping and monitoring programme
- Updated governance structure and stakeholder groups



Thank you

Contact: lnrs@suffolk.gov.uk



Norfolk
& Suffolk
Nature Recovery
Partnership