

GHONTHEPARK.COM | INFO@GHVENUES.COM | +1 646 833 3440

GH
ON THE PARK

LUXURY VENUE, PERFECT SETTING

54 WEST 40TH ST.
NEW YORK, NY 10018

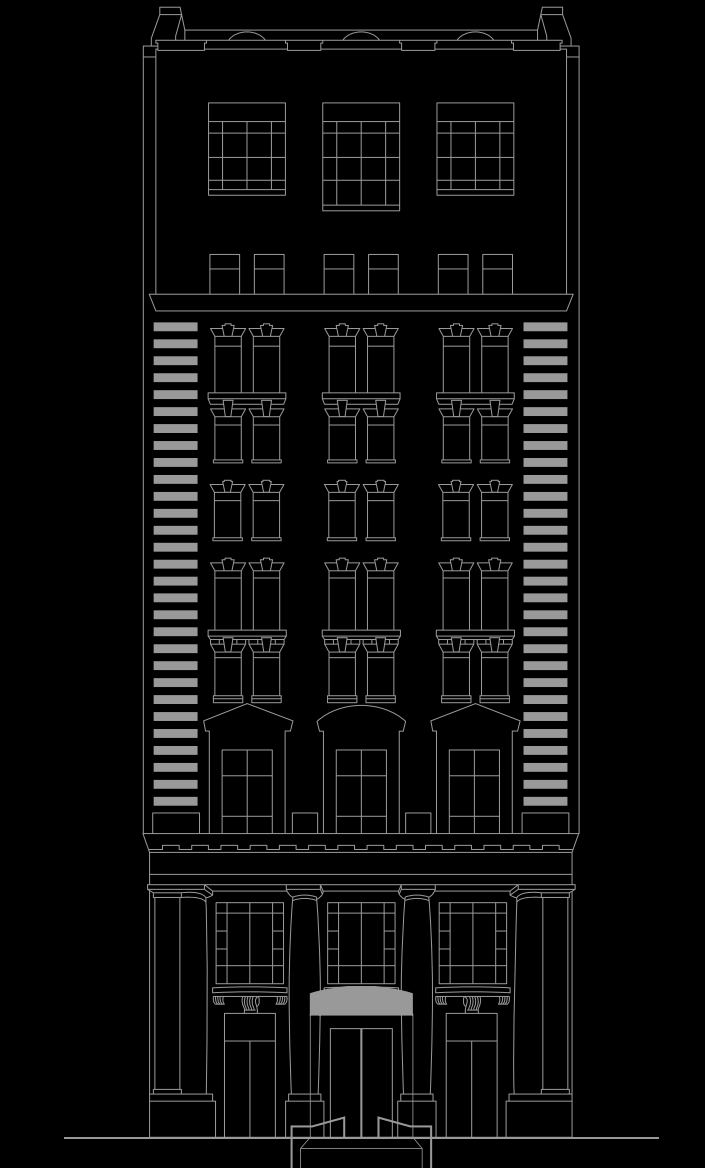
Last updated: Oct 03, 2025

GH

ON THE PARK

THE VENUE

GH on the Park is the newest luxury venue in the **GH Venues Collection**. Located on Bryant Park in NYC, it features **7 fully rentable floors**, making it one of NYC's only full building event venues. With historic charm, modern technology and elite service, **GH on the Park** delivers an elevated experience from top to bottom.



THE VERSATILITY

PANORAMIC

- Wonderful views of one of Manhattan's finest squares—Bryant Park.
- The grand entrance is perfect for photos, cocktail receptions, registration, and pre and post event celebrations; all while delivering top notch first impressions to your guests.

AMENITIZED

- State-of-the-art audio, video, and lighting capabilities.
- Multi-floor combinations for various event formats.
- Ample and efficient coat check.

TAILORED

- A diverse, curated list of preferred vendors to handle all audio, video, lighting, branding, and catering needs.
- On-site inventory of tables, chairs, lounge furniture, linens and bar glassware.
- Secure and reliable wi-fi and hard line custom internet packages.
- Team of in-house event professionals to provide seamless execution from event conception to event completion.



THE LOCATION

CENTRAL, ACCESSIBLE, CONVENIENT

ADDRESS

54 West 40th St. New York, NY 10018

NEIGHBORHOOD

Overlooking Bryant Park in Manhattan, surrounded by squares, restaurants, hotels, and attractions.

PARKING GARAGES

- Metered street parking is available starting at **6 PM**, along with several **parking garages** in the area.
- **Valet options available.**

PARTNER HOTELS

- The Knickerbocker
- Algonquin
- Gotham Hotel
- Refinery
- Sofitel
- Archer Hotel
- The Langham
- The Bryant Park Hotel

RAIL & TRANSIT

GH on the Park is accessible via:

42 St - Bryant Park



Times Sq - 42 St



Penn Station



Grand Central Station



THE EXPERIENCE

Your experience starts the moment you open the doors and step inside. Here you will find various branding moments and influencer opportunities throughout our library, lounge, and pre-function spaces.

MANSION FLOORS

FIRST, SECOND & THIRD FLOORS

The experience continues as you ascend the grand staircase to the second and third floors.

Each of the three floors has a unique layout and design, offering the flexibility to be rented individually or together. The venue truly shines when all three mansion floors are combined for corporate meetings, large gatherings, or holiday parties.



LOFT FLOORS

EIGHTH, NINTH, TENTH & ELEVENTH FLOOR

Spanning four full floors, The Loft Floors (Eighth through Eleventh) offer a rare combination of vertical flexibility and architectural charm. Each floor features open layouts, and a modern, clean aesthetic—ideal for everything from executive summits and brand activations, breakouts, and intimate milestone events.



All floors can be rented individually or combined to create a fully immersive, multi-level experience tailored to your vision.



THE PACKAGES & OFFERINGS

Every venue rental at GH on the Park is designed to deliver a seamless, elevated event from start to finish.

Our comprehensive packages include essential furnishings, expert staff, premium beverage options, and state-of-the-art AV technology—ensuring you have everything you need to bring your vision to life.

ALL VENUE RENTALS INCLUDE

- A diverse inventory of 4ft, 6ft, 8ft and 60" round tables
- High tops, bar stools and bars
- Large selection of cotton linens
- Select lounge furniture
- Event staff for coat check
- Security and event management

AV EQUIPMENT PACKAGES INCLUDE

- Staging platforms
- Podiums
- 75 inch monitors
- Stage furniture
- Custom color changing ceiling lights and wireless uplights
- Custom GOBOs
- Screen and projector (second floor only)

BEVERAGE PACKAGES AVAILABLE

- All day non-alcoholic beverages
- Beer, wine and bubbly
- Premium open bar
- Elite open bar
- Kosher



Our preferred vendors complete the experience. [Click here](#) to see our curated list.



THE MANSION FLOORS

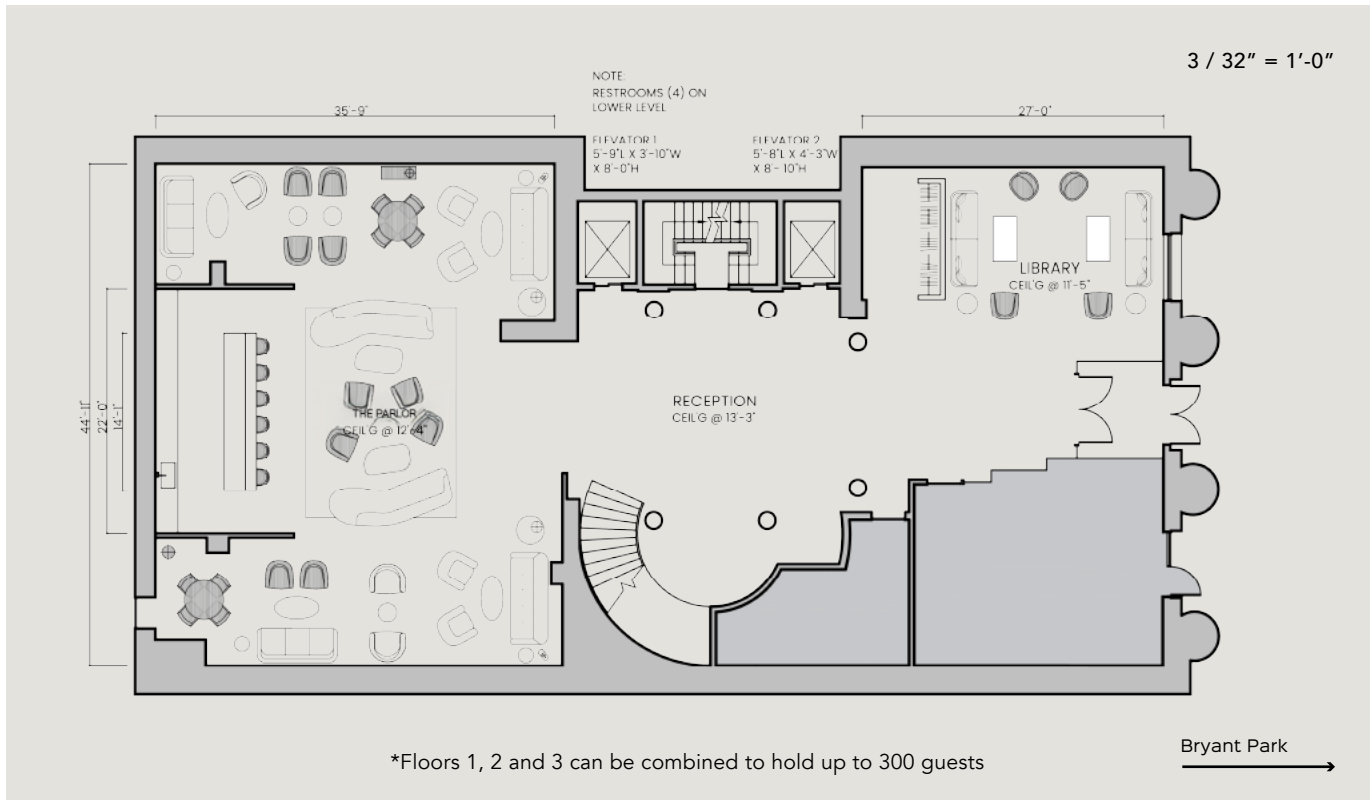


Pick your favorite or combine them to expand your event possibilities.



THE FIRST FLOOR

FLOORPLANS



CAPACITY

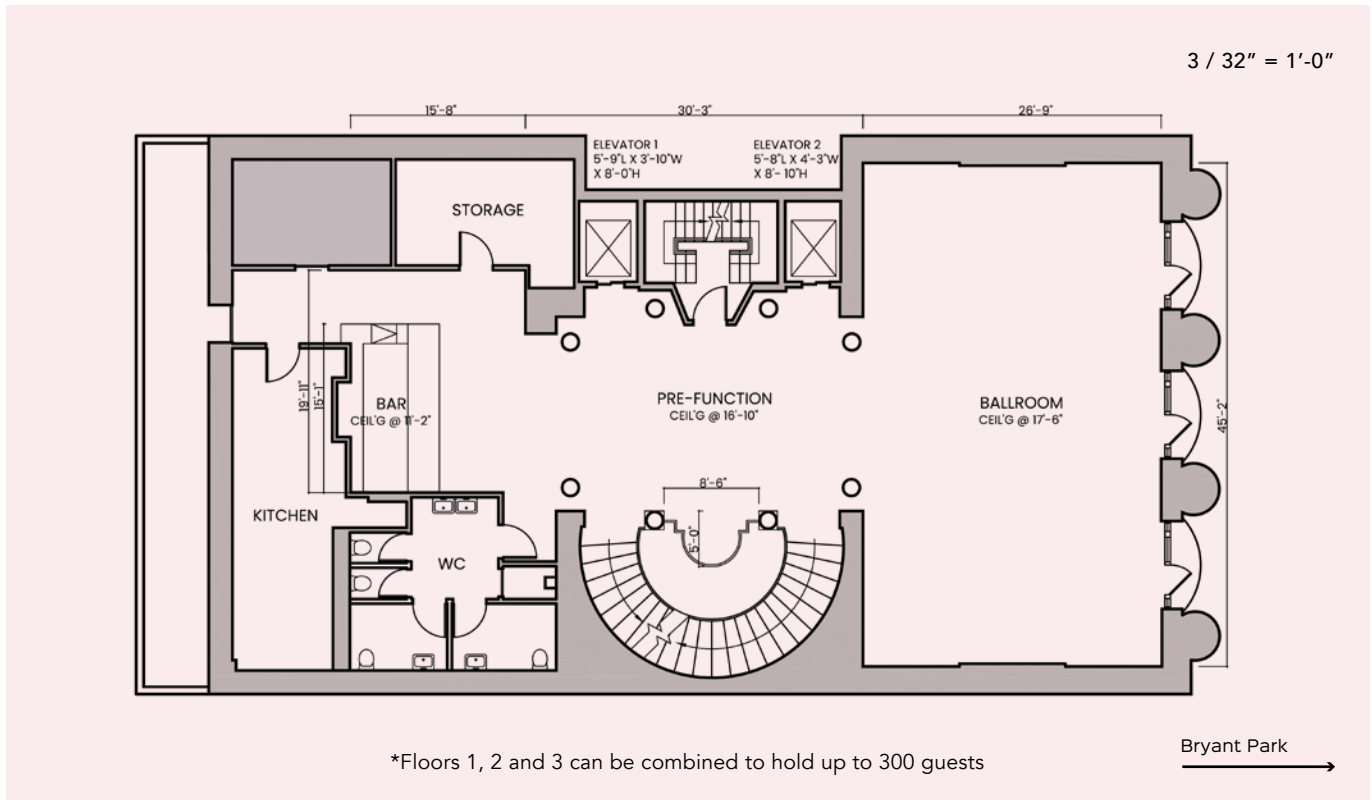
140 guests

The Parlor 75-100 guests



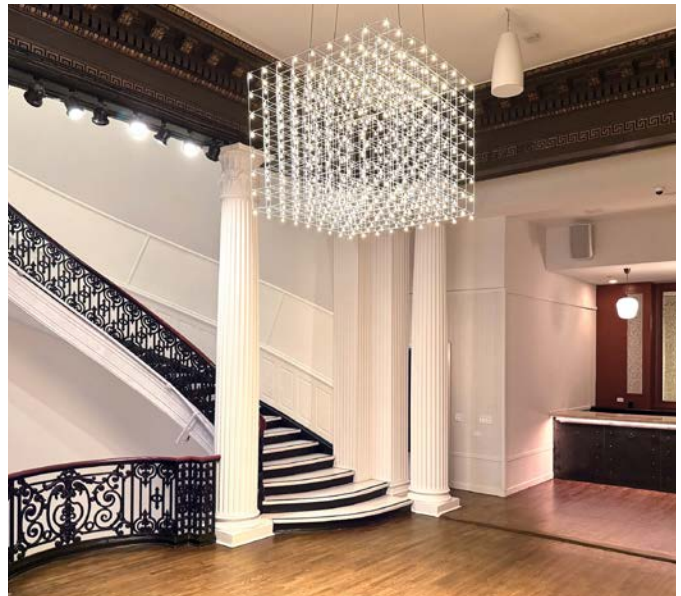
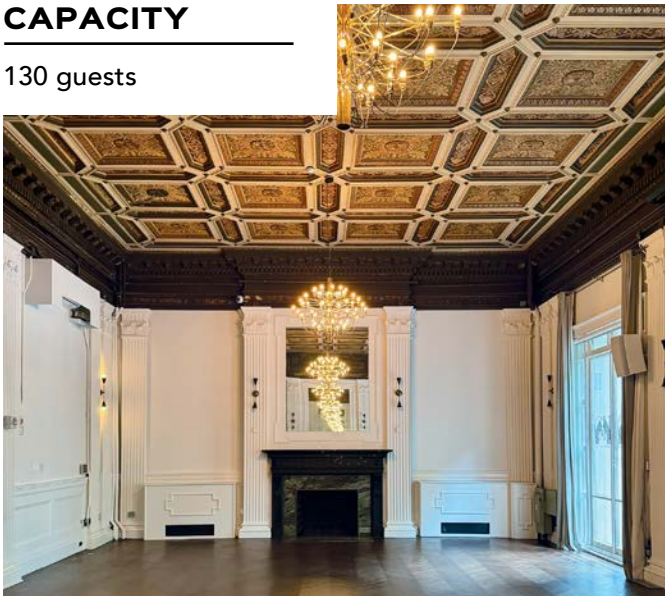
THE SECOND FLOOR

FLOORPLANS



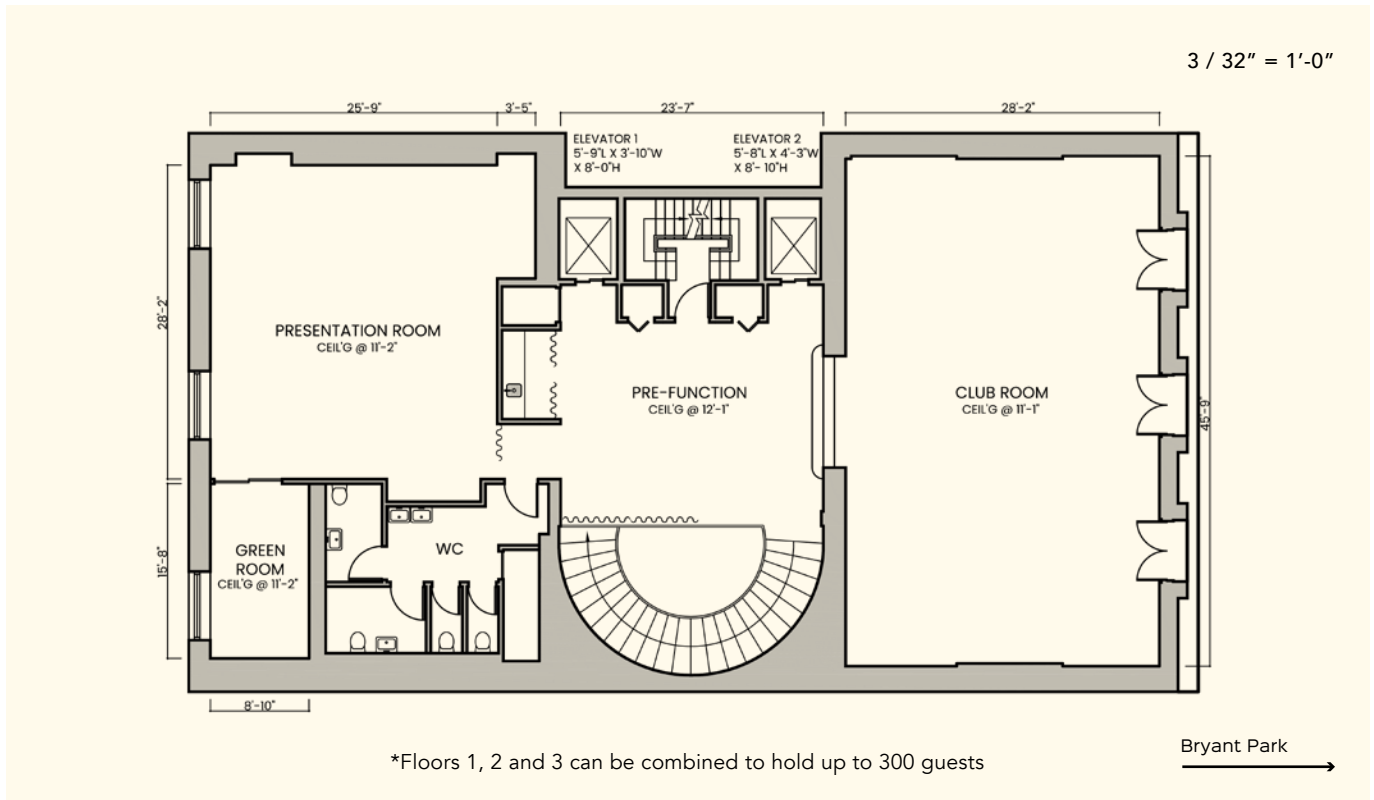
CAPACITY

130 guests



THE THIRD FLOOR

FLOORPLANS



CAPACITY

130 guests



THE LOFT FLOORS

EIGHTH FLOOR

COMING SOON

NINTH FLOOR

TENTH FLOOR

ELEVENTH FLOOR

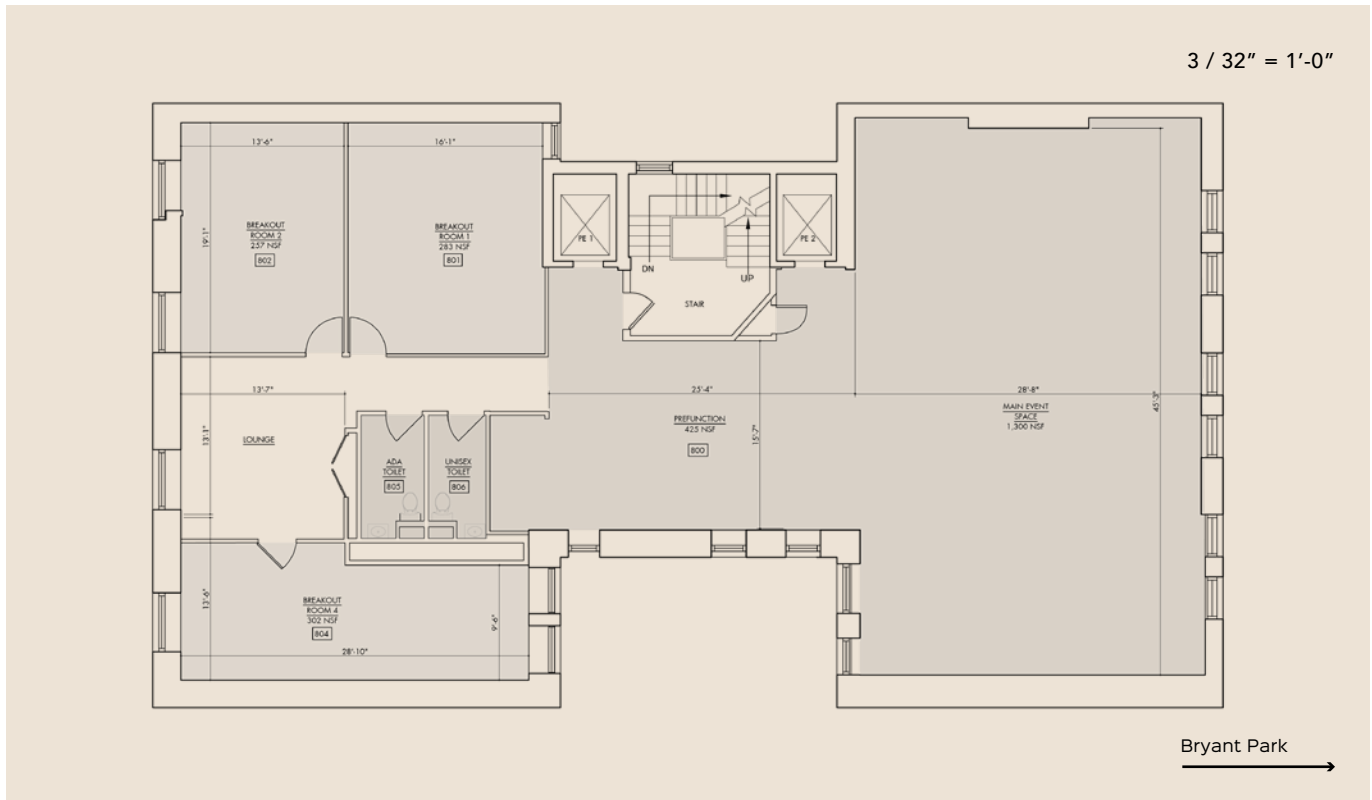
COMING SOON

Pick your favorite or combine them to expand your event possibilities.



THE EIGHTH FLOOR

FLOORPLANS



CAPACITY

100 guests

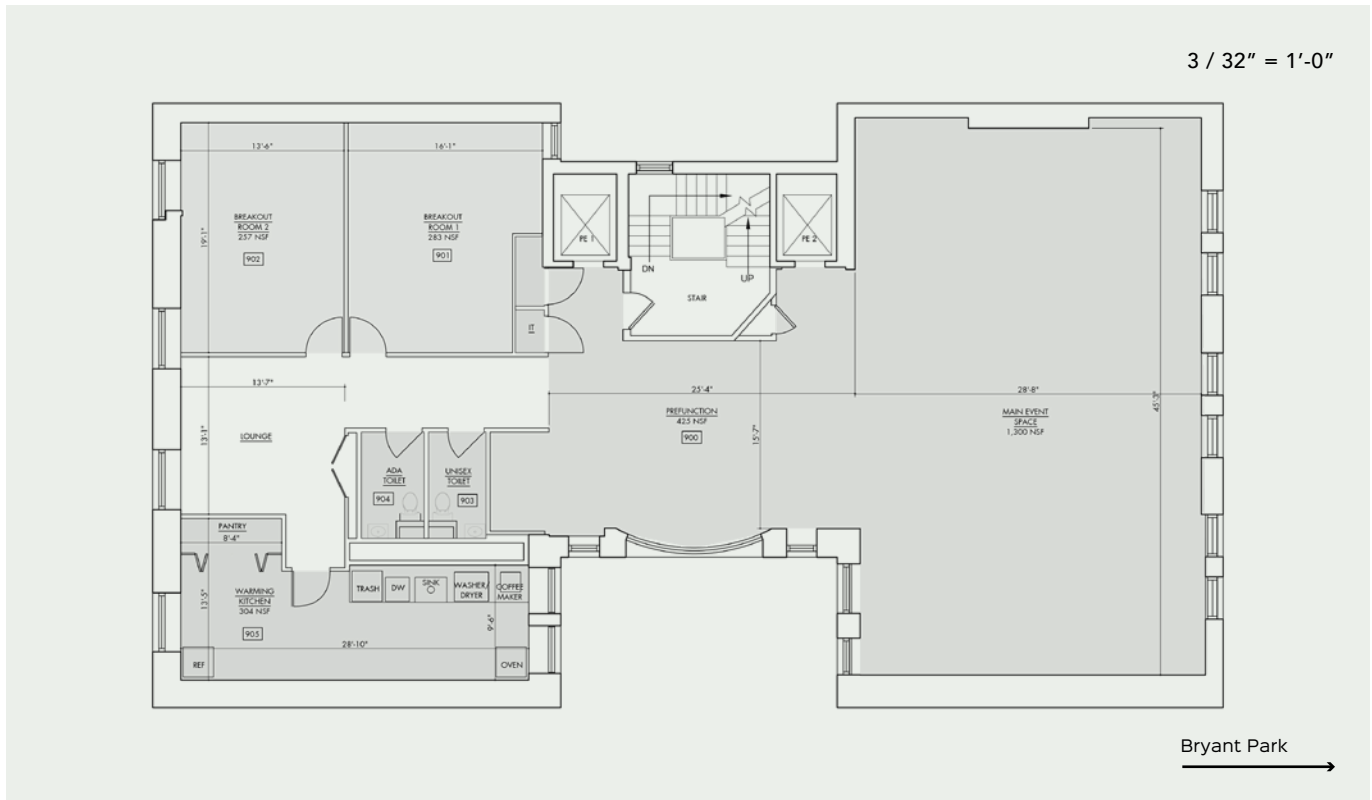
COMING SOON

COMING SOON



THE NINTH FLOOR

FLOORPLANS



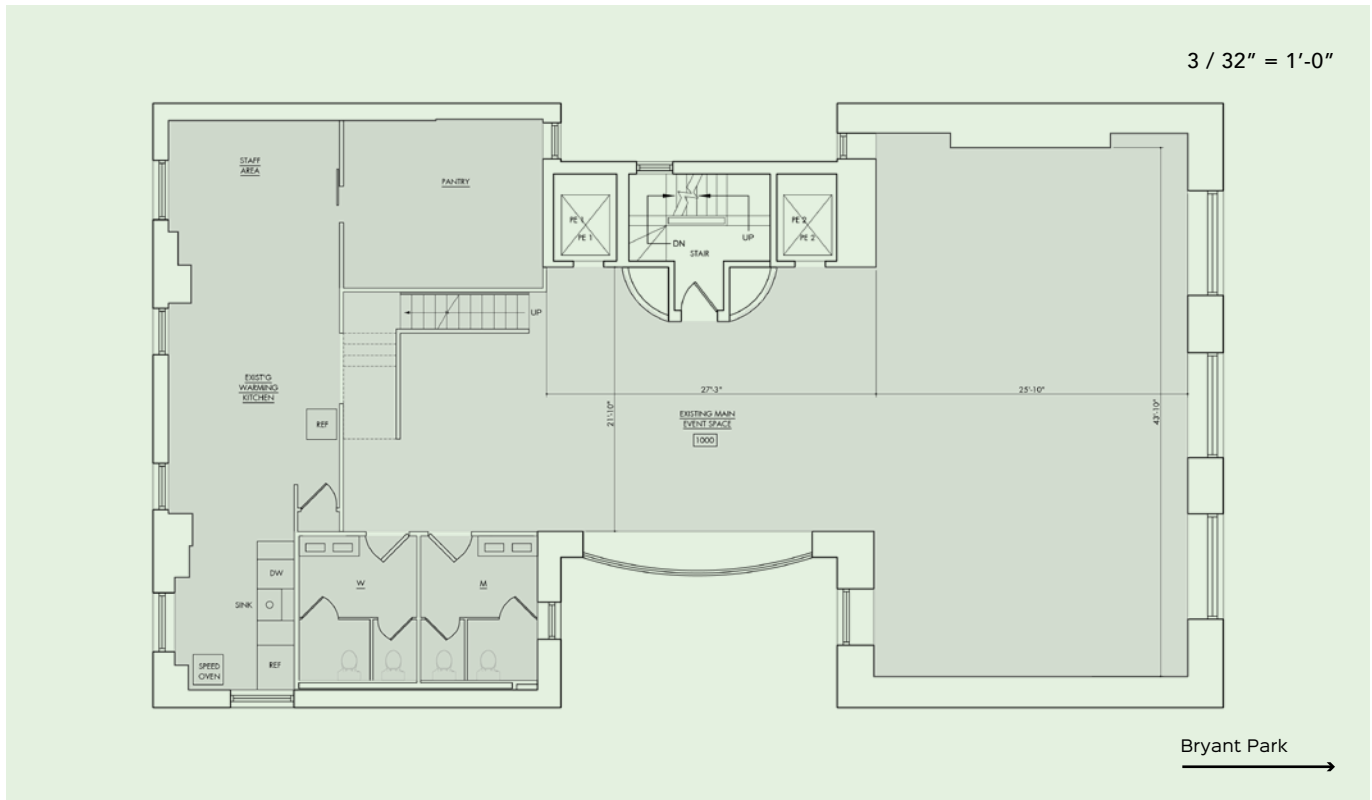
CAPACITY

100 guests



THE TENTH FLOOR

FLOORPLANS



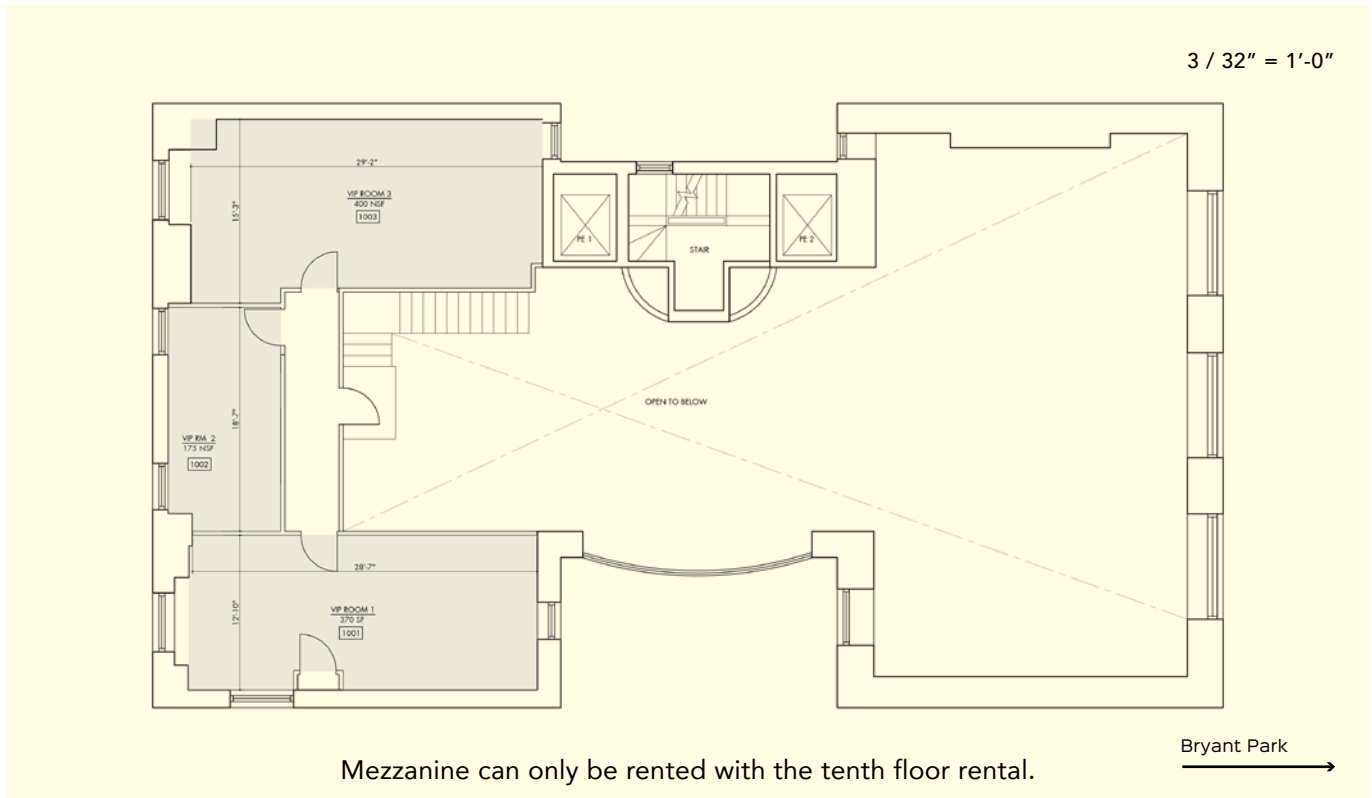
CAPACITY

165 guests



THE TENTH FLOOR MEZZANINE

FLOORPLANS



CAPACITY

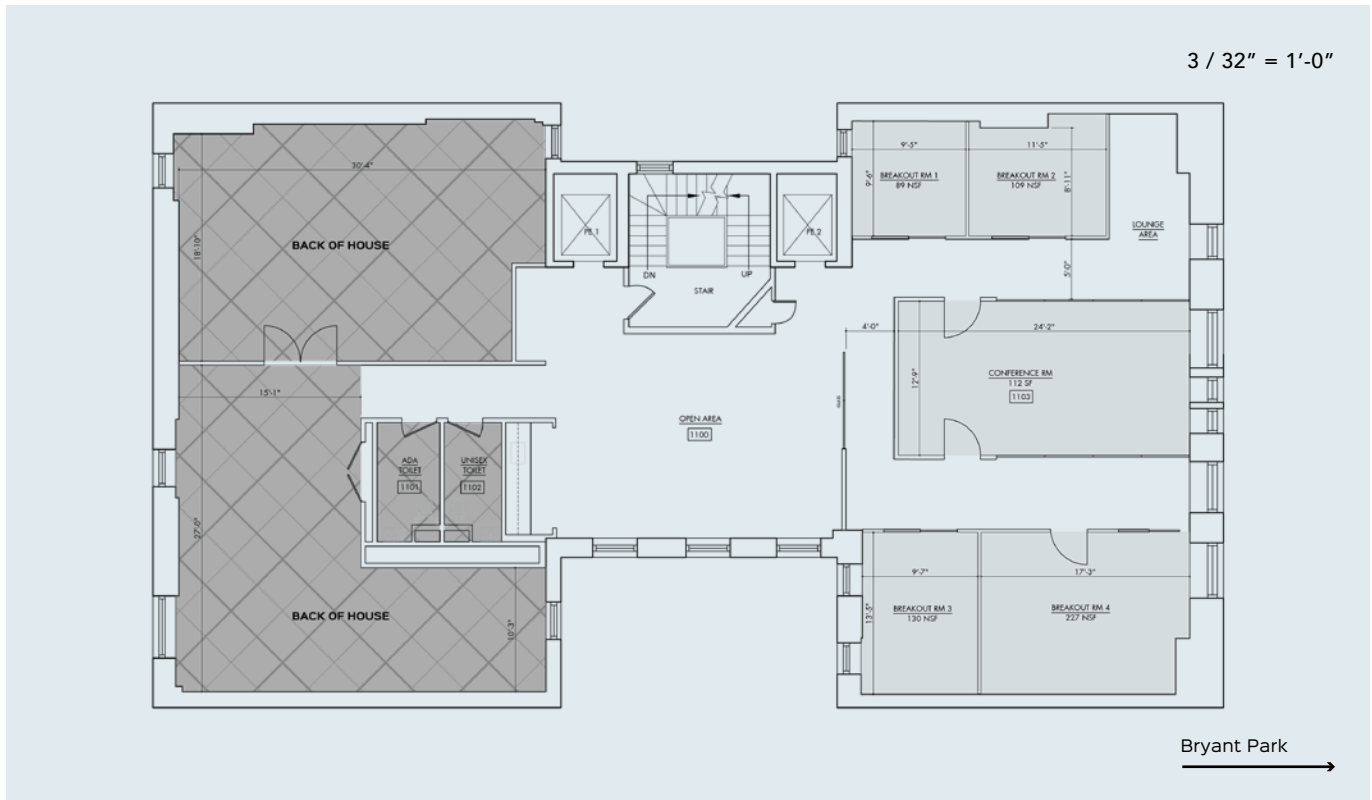
10-30 guests

COMING SOON

COMING SOON

THE ELEVENTH FLOOR

FLOORPLANS - MEETINGS AND CONFERENCE ROOMS



CAPACITY

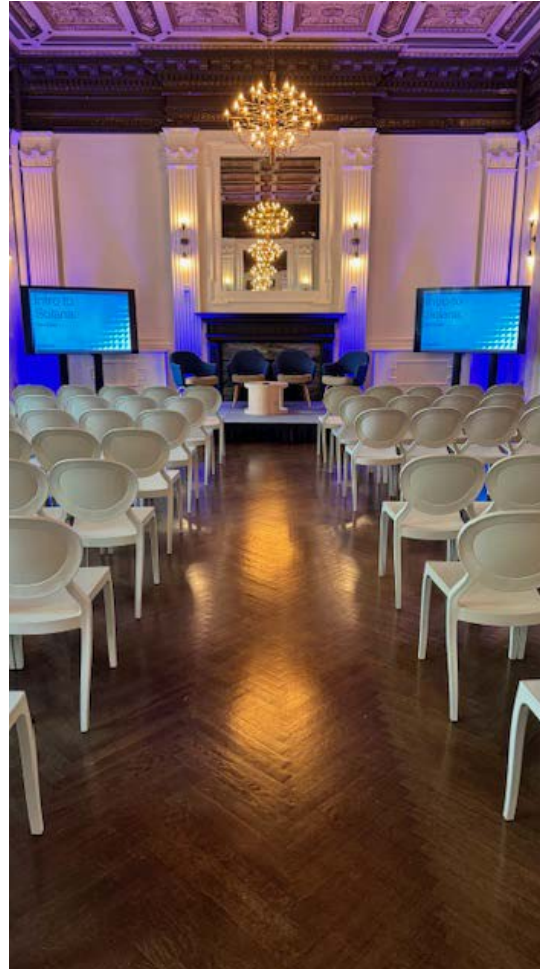
20-40 guests

COMING SOON

COMING SOON



PHOTO GALLERY



GH

ON THE PARK



See more photos at ghonthepark.com



The image shows a luxurious interior room. The ceiling is a complex coffered design with gold leaf detailing in each panel. A large, multi-tiered chandelier with many warm-toned lights hangs from the center. Below the ceiling, a dark wood cornice runs along the top of the walls. The walls are white with classical architectural details, including fluted columns and decorative moldings. In the center, there is a fireplace with a dark wood mantel. Above the mantel is a large mirror that reflects the chandelier and the ceiling. The overall atmosphere is one of classic elegance and high-end design.

GH

ON THE PARK