



255 York Road
Carlisle, PA 17013
717-258-9863 www.ronanfh.com
Lynn A. Ronan, F.D.

**Catalog of Services & Merchandise
2026**

Table of Contents

Services We Offer

TRADITIONAL FUNERAL SERVICES

Traditional services normally include a viewing with the body present on the evening before or day of funeral services. Mass of Christian Burial, Funeral Services or Life Celebration Ceremonies are held.

CREMATION WITH FUNERAL SERVICE

Cremation with Funeral Service is similar to a traditional funeral service, except after the services are completed, the deceased is then

CREMATION WITH MEMORIAL SERVICE AND GRAVESIDE COMMITTAL

Cremation with a Memorial Service and Graveside Committal is when the deceased is cremated and a memorial service is held either in the funeral home, place of worship or other location with the cremated remains present followed by a graveside committal service.

CREMATION WITH MEMORIAL SERVICE

Cremation with a Memorial Service is when the deceased is cremated and a memorial service is held either in the funeral home, place of worship or other location with the cremated remains present.

CREMATION WITH GRAVESIDE COMMITTAL

Cremation with Graveside Committal is when the deceased is cremated and a Committal service is held at a cemetery or other place of interment.

IMMEDIATE DISPOSITION

This is when the deceased is cremated with no attendant ceremonies. Cremated remains are returned to the family.

IMMEDIATE BURIAL

With this service the deceased is interred without any ceremonies.

CELEBRATION OF LIFE

A celebration of life is held after the burial or cremation of the deceased. It would normally occur a few days after your loved one passes or up to several weeks or months later. Some choose to have a Celebration of Life on the anniversary of the death of the deceased. A Celebration of Life can be held in the funeral home, or location of the families choice.

OUT-OF-TOWN SERVICES

If your loved one resided out of the area, or needs to be transferred to another city, state or country, we will coordinate with a funeral home in that locale to make all necessary arrangements.

ADDITIONAL ASSISTANCE

Additionally, our staff will assist you in completing all necessary forms including death certificates, insurance, notification of death, veteran's benefits, social security, etc.



Introduction

Whether you have come to us to pre-arrange a funeral, at a time of great need or even to explore the available merchandise and services we offer... for over 30 years we have served all faiths with kindness and professionalism ~ and we continue that tradition today.

We can provide traditional funeral services, cremation services, memorial services, graveside services, celebrations of life, local and long distance services.

We present a complete range of services for both pre-need and at-need arrangements and an aftercare program.

Be assured we are here for you to help through this difficult time. Along with your family and friends, our staff continues to have concern for you as you adjust to many changes. Some of these changes may carry you into what seems like unknown, painful and frightening territory.

To aid you, we are providing this Catalog of Services to assist you in the funeral planning process. Included are the types of services we provide, available merchandise selections and fees for those items. Also included is information on personalization options to create a memorable custom service that matches the beliefs, hobbies and interests of your loved one.

The staff at Ronan Funeral Home feels that our services should continue long after the funeral has concluded. If we can be of assistance at any time, or just a comforting voice on a bad day, we are here.



OUR HISTORY

Our facility is located at 255 York Road, Carlisle, South Middleton Township. The public areas of our funeral home are all on one floor. We feature multiple parlors, accommodating both private, small and large services, a private arrangements conference room, audio-visual services and an on-site crematory. Your loved one does not leave our care.

It is a privilege to serve your family. We pride ourselves on being family owned and operated. We can be reached 24 hours a day, 7 days a week, 365 days a year to assist you in anyway possible. Truly, our funeral home is "Our Family Serving Your Family."

Our website (www.ronanfh.com) contains information regarding upcoming services, available merchandise, downloadable catalogs, grief support and helpful guides. We urge you to visit our website and we welcome your feedback.

The prices contained in this booklet are effective December 1, 2025, but are subject to ochange without notice. The goods and services shown in this booklet are those we can provide to the families we serve. You may choose only the items you desire. However, any funeral arrangements you select will include a charge for our basic services and overhead. If legal or other requirements mean you must buy any items you did not specifically ask for, we will explain the reason in writing on the statement we provide describing the funeral goods and services you selected.

Our Staff



LYNN A. RONAN

Owner
Funeral Director
Certified Crematory Operator
PA Licenseed Insurance Agent

1980 Graduate Boiling Springs High School
184 Graduate Juniata College BS Health Sciences
1985 Graduate Pittsburgh Institute of Mortuary
Science



FRANK A. JACKSON

Staff Assistant
Certified Crematory Operator

Retired from R&N Electric
Head Deacon, Shiloh Missionary
Baptist Church, Carlisle



MORGEN T. RONAN

Staff Assistant

2024 Graduate Boiling Springs High School
Will be attending Pittsburgh Institute of
Mortuary Science

THE FUNERAL

Helps confirm the reality and finality of death.

Provides a climate for mourning and the expression of grief.

Allows the sorrows of one to become the sorrows of many.

Is one of the few times love is given and not expected in return.

Is a vehicle for the community to pay its respects.

Encourages the affirmation of religious faith.

Is a declaration that a life has been lived
as well as a sociological statement that a death has occurred.

From "The Funeral From Ancient Egypt to Present Day America"



GENERAL PRICE LIST

Services of Funeral Director & Staff.....\$2,895.00

Includes: Twenty-four hour, 365 days per year accessibility; administrative expenses, arrangements conference; planning, supervising and coordinating service details with those involved in the funeral service; securing, preparing and filing necessary permits, certificates, authorizations and consents; clerical and record keeping. This fee for our basic services and overhead will be added to the total cost of the funeral arrangements you select. ***This fee is already included in our charges for direct cremations, immediate burials and forwarding or receiving remains.***

Embalming.....\$ 1075.00*

Except in certain special cases, embalming is not required by law. Embalming may be necessary, however, if you select certain funeral arrangements, such as a funeral with viewing. If you do not want embalming, you usually have the right to choose an arrangement that does not require you to pay for it, such as direct cremation or immediate burial.

Extra Preparation following Tissue Donation.....\$ 350.00

Other Preparation of the Body.....\$ 375.00*

Dressing, casketing, cosmetology and hairdressing

Autopsy Preparation.....\$ 200.00

Washing & Disinfecting of Remains (if no embalming).....\$ 250.00

Refrigeration per day (after first 24 hours).....\$ 100.00

Use of Facilities, Equipment & Staff (at funeral home or other facility)

Viewing & Visitation (One Day).....\$ 485.00*

Extra Day of Viewing \$295.00

Private Family Viewing (30 Minutes).....\$ 120.00

Funeral Ceremony\$ 580.00*

Graveside Service (Equipment & Staff).....\$ 300.00*

Memorial Service.....\$ 580.00

Extra fee for Saturday Viewing/Services.....\$ 250.00

Extra fee for Sunday Viewing/Service.....\$ 350.00

Extra fee for Holiday Viewing/Service.....\$ 450.00

Automotive Equipment (within 25 mile radius) Additional miles @ \$3.25 per mile (one way)

Transfer Remains to Funeral Home.....\$ 520.00*

Funeral Coach (Hearse).....\$ 395.00*

Lead/Clergy/Errand\$ 150.00*

Flower Car/Floral Disposition.....\$ 100.00

Limousine.....at cost

Merchandise:

Caskets.....(\$865.00 to \$14,075.00)

Outer Burial Contain.....(\$1,800.00 to \$6,000.00)

Packages:

Package A: Evening Viewing.....\$6,530.00

Includes all items marked with * above.
Savings of \$255 over itemized pricing

Package B: 2 hour Viewing Day of Service.....\$6,260.00

Includes all items marked with * above.
Savings of \$780 over itemized pricing

Package C: 1 hour Viewing Day of Service.....\$6,160.00

Includes all items marked with * above.
Savings of \$875 over itemized pricing.

**Merchandise and Cash Advances additional.

Forwarding of deceased to another Funeral Home.....\$3,383.00

This charge includes: on call 24 hours, 365 days per year; administrative expenses; arrangements conference; planning, supervising and coordinating service details, securing, preparing and filing necessary documents; clerical and record keeping; embalming, other preparation of the body; transfer of remains; use of the hearse; and transportation of deceased to local airport. Additional mileage will apply if we must use an airport beyond our normal service area. Shipping charges excluded.

This charge does not include visitation or ceremonies

Receiving of deceased from another Funeral Home.....\$2,451.00

This charge includes: on call 24 hours, 365 days per year; administrative expenses; arrangements conference; planning, supervising and coordinating service details, securing, preparing and filing necessary documents; clerical and record keeping; other preparation of the body; use of the hearse; and transportation of deceased from local airport; local transportation of deceased to the final place of burial; and use of staff and equipment for graveside service. Additional mileage will apply if we must use an airport beyond our normal service area. Shipping charges excluded.

This charge does not include visitation or ceremonies



Direct Cremation.....\$3,500.00 to \$11,920.00

This charge includes: on call 24 hours, 365 days per year; administrative expenses; arrangements conference; planning, supervising and coordinating service details; securing, preparing and filing necessary documents; clerical and record keeping; other preparation of the body; local transfer of remains; temporary shelter (up to 24 hours); crematory fee; minimum alternative container; ID viewing (next of kin only)

This charge does not include visitation or ceremonies

Pennsylvania Rules and Regulations number 13.201 6(i) requires that any human remains held 24 hours beyond death shall be embalmed or sealed in a container that will not allow fumes or odors to escape, or kept under refrigeration, if this does not conflict with any religious belief or medical examination.)

1. Direct Cremation (with any casket selected from our funeral home.....\$3,500.00

Range of direct cremations with a casket from our selection room \$3,865.00 to \$10,945.00

2. Direct Cremation with a container provided by purchaser.....\$3,500.00

3. Direct Cremation with an alternative container.....\$3,575.00
(The container we provide is a Cardboard Box cremation container)

Please note that morbidly obese cremations (over 300 lbs.) will incur additional crematory charges.

We require a positive ID by Next of Kin

Immediate Burials.....\$3,830.00 to \$17,905.00

This charge includes: on call 24 hours, 365 days per year; administrative expenses; arrangements conference; planning, supervising and coordinating service details; securing, preparing and filing necessary documents; clerical and record keeping; other preparation of the body; transfer of remains; use of the hearse; use of staff & equipment for graveside service.

2. Immediate Burial (Service Only).....\$3,830.00

Range of Immediate Burials with a casket from our casket price list \$3,785.00 to

\$14,865.00

2. Immediate Burial (Container provided by purchaser)\$3,830.00

Anatomical Donation.....\$3,500.00

This charge includes transfer of remains to our funeral home, temporary shelter of remains, basic services of funeral director and staff, recording of vital statistics, securing and filing permits and authorizations and transfer to local registry (usually Hershey Medical Center) If remains are transported to another facility, mileage fees will be incurred.

Other Merchandise Offerings

Cremation Urns.....\$85.00 to \$2,000.00

Stationery Memorial Packages \$195.00 to \$370.00

**Memorial Folders or Prayer Cards per 100
.....\$75.00**

Acknowledgement Cards per 25.....\$20.00

Register Book.....\$100.00

Laminated Obituaries (each).....\$ 3.00

Bookmarks (per 100).....\$75.00

**Trifold Funeral Program (8.5 X 11 paper)
(per100).....\$75.00**

**Half fold Funeral Program (8.5 X 11 paper) (per
100).....\$75.00**

**Full Funeral Program (8.5 X 14 paper) (per
100).....\$100.00**

Interior Crucifix/Cross.....\$35.00

Exterior Crucifix.....\$60.00

Flag Cases.....\$200.00 to \$350.00

**Temporary Grave
Marker.....\$30.00**

**Memorial DVD (up to 50 pictures) includes 1 CD
or Thumbdrive.....\$175.00**

51 to 75 pictures.....\$200.00

More than 75 pictures.....\$250.00

Extra copies (each).....\$30.00

Tribute Blanket.....\$175.00

**This is a true woven blanket created from
photo(s) you provide and delivered in time for the
service.**

Memory Portrait.....\$150.00

Graphic Design Flat Fee.....\$200.00



PAYMENT OPTIONS

This price list is offered to comply with the Federal Trade Commission's Trade Regulation Rule: Funeral Industry Practices 16 CFR Part 453. Our fees are established in consultation with a professional advisory firm exclusively serving funeral homes.

Losing someone you love is a devastating experience. It can be very traumatic and can seriously impact one's judgement. Accordingly, it is important to be realistic with respect to funeral expenses.

One of the most important responsibilities we have to each family that we are privileged to serve is to listen and bring your financial and emotional needs together, whatever your circumstances. We do not want your choices to be more than is affordable, nor less than you would like to arrange.

We understand the importance of a meaningful service and are here to assist you in any possible way. As part of our consultation with your family we will discuss the different payment arrangements. Our goal is to ensure that the services and merchandise you select will be in keeping with your wishes as well as your budget.

Ronan Funeral Home has established the following uniform payment policy. This policy enables us to keep the cost down for all the families we serve as well as treat everyone fairly.

Payment Policy:

This is a cash transaction. For your convenience we accept the following forms of payment:

- 1. Cash*
- 2. Check*
- 3. Pre-funded funeral arrangements*
- 4. Life insurance assignment. Policy must be verified by the funeral home.*
- 5. Loan obtained through LENDING USA.*
- 6. Credit Card*

Credit Card Payments

If the family opts to pay by credit card, there will be a 3% service fee to cover the fees assessed by the credit card company. Payments may be made directly through our website at www.ronanfh.com

Billing Policy

We will mail a final statement to you within 1 week after the conclusion of the services.

It is our policy that 30 days after the funeral, payment is due in full if there are sufficient funds to cover the bill or an insurance assignment to the funeral home is given. If there are no assets or insurance, payment is due at time of services.

Insurance Assignments

We accept insurance assignments under the following conditions:

The policy must be verified by our staff to be in force

The policy must be assignable and payable to Ronan Funeral Home

Additional Options

We do not finance or extend credit. If a long-term payment plan is desired, a bank credit union or loan company of the family's choice SHALL be used to provide payment.



CASKET SELECTIONS

Our funeral home is pleased to offer caskets from Victoriaville (formerly Schuylkill. Haven) Casket Company . The company is based in Canada and the United States. The quality and selection of their products is exceptional. They have been serving funeral homes and families for over 100 years.

This page will describe some of the specific features of a casket to better help you understand some of the terms that are used. All caskets pictured on the following pages are available full couch, meaning the entire lid opens

Most Victoriaville caskets are equipped with a compact, leak-resistant compartment that is threaded into a corner of the casket. For any reason the casket is disintombed, the Memorial Record System is assured to stay intact, making identification much easier and less traumatic for families.

Many states, including Florida and Louisiana, now require caskets to have a means of external identification and have approved the Memory Record System for this purpose. Natural disasters bring trying times for entire communities. No family should undergo the additional stress or trauma that is brought on by a loved one's casket being re-opened. The Memorial Record System is another reason families can rest assured their loved ones' remains are secure.





COVINGTON

The Covington Solid Walnut is constructed from solid walnut, is non-gasketed and features a Natural Walnut satin finish full tufted beige interior

\$9730



FRANKLIN

The Franklin Solid Mahogany is constructed from plank mahogany is non-gasketed and features traditional Lustre finish, large tufted beige velvet

\$8340



HERITAGE

The solid cherry constructed Heritage is non-gasketed and features a heritage satin finish, pipe & plain rosetan velvet

\$6225



SANDHILL

The Sandhill Bird's Eye Maple is constructed from Bird's Eye Maple, is non-gasketed and features a Georgian satin finish with beige basket weave interior

\$5740



JAMISON MAPLE

The Jamison maple is constructed of solid maple, is non-gasketed features a natural luster finish and choice of interior: pink velvet with Arbor Rose panel of camellia velvet with lace to small piping

\$5480





HAMPTON

The Hampton is constructed of solid oak with a two tone finish with a rosetan crepe interior.

\$5225



AMHERST



The Amherst Oak is constructed of solid oak and features a tawny oak shaded finish with autumn leaves or sunburst, rosetan crepe

\$4735



WINDSOR

The Windsor Oak: is constructed of solid oak, is non-gasketed and features a nut brown satin finish with rosetan crepe and pipes,

\$4235



PRESTON

The Preston Poplar is constructed of solid poplar, is non-gasketed and features a pecan gloss finish, rosetan velvet, pipes,

\$4535

NOTTINGHAM

The Nottingham is constructed of solid oak, is non-gasketed and features a nut brown satin finish, rosetan crep interior with a plain interior, wheat panel or oak cross corners. It is also available in green velvet Real Tree Camo.



Plain corners **\$4920**



Cross corners **\$4910**



Wheat **\$5410**



Real Tree Camo, Green Velvet

\$6320



CARLYLE

The Carlyle is constructed of: solid poplar, is non-gasketed and features a cherrywood Satin Finish, Tan Crepe, INTERCHANGEABLE CORNERS

\$2275



NEWINGTON

The Newington is constructed of solid poplar, is non-gasketed and features a Fairmont Polish Finish, Tan Crepe, INTERCHANGEABLE CORNERS

\$2470



CARTER

The Carter Poplar is constructed of solid poplar is non-gasketed and features either an auburn red gloss finish with rosetan crepe sunburst or a honey satin finish with rosetan crepe sunburst.

\$2915



The Holbrook Poplar is constructed of solid poplar, is non-gasketed and features an auburn red gloss finish, and a beige basket weave interior

\$3895



The Belmont Poplar is constructed of solid poplar, is non-gasketed and features a honey satin finish with a rosetan crepe sunburst

\$3385



EVERETT

The Everett Popla is constructed of hardwood, is non-gasketed and features a vandyke satin finish, eggshell crepe interior

\$3200



ASHLAND

The Ashland is constructed of solid ash and features a satin fawn finish, rosetan crepe interior with coices from the Corner Art Collection

\$6695



AUGUSTA

The Augusta is constructed of Solid Bronze is gasketed and features a brushed bronze finish and fully tufted beige velvet interior

\$14910



MANCHESTER

The Manchester is constructed of Solid Copper, is gasketed and features a beacon copper brushed finish with champagne velvet, buggy tufts

\$9230



ROSE

The Rose is constructed of Solid Copper, is gasketed and features a pink brushed finish with a pink velvet interior

\$9230



SILVER STAINLESS

The Silver is constructed of Stainless Steel, is gasketed and features an Inca silver brushed finish, straight pipes ivory velvet interior

\$4915



EBONY

The Ebony is constructed of Stainless Steel, is gasketed and features Onyx brushed, exterior with silver velvet interior

\$4915



PRAYING HANDS

The Praying Hands is constructed of Stainless Steel is gasketed and features an Atlantic brushed blue finish, blue velvet, Praying Hands

\$4915



KENSINGTON

The Kensington is an 18 ga. Steel gasketed casket featuring a blue gold brushed finish with blue velvet, buggy tufts or a bronze copper brushed finish with blue velvet buggy tufts

\$4535



PATRIOT

The Patriot is an 18 ga steel: gasketed casket available in either a metallic blue finish with blue crepe draped flag or metallic pewter finish with silver crepe, draped flag

\$3310



LORD'S PRAYER



The Lord's Prayer casket is an 18 ga steel, gasekted casket featuring a bronze finish with rosetan crepe with Bible panel or metallic blue finish, blue crepe with Bible panel

\$3310

PRAYING HANDS



The Praying Hands casket is an 18ga steel gasekted casket available in several color combinations: bronze finish with rosetan crepe, white finish with white crepe, white finish with pink crepe or metallic blue finish with blue crepe. All feature a praying hands panel

\$3310

HOMECOMING



The Homecoming is an 18ga steel gasketed casket available in either a bronze finish with rosetan crepe interior, white shaded finish with pink crepe interior or metallic blue finish, blue crepe, "Going Home" panel

\$3310



AFFINITY



The Affinity is a 20 ga steel gasketed casket available in several combinations: a gunmetal finish, white crepe, a light orchid finish with pink crepe, a London blue finish with silver crepe or russett bronze finish, rosetan crepe, Personalization is available from the Corner Art Collection

\$3840



MOTHER'S ROSE

The Mother's Rose is a 20 ga steel gasketed casket featuring a light orchid finish, pink crepe, vine rose with "MOTHER"

\$2730



VETERAN

The Veterans is a 20ga steel gasketed casket available in several combinations: Metallic black finish, oyster crepe, Pewter finish, oyster crepe or Metallic blue finish with blue crepe. All feature an American flag panel.

\$2835



Veterans 20ga steel: Metallic blue finish, blue crepe, flag panel

\$2835



Veterans 20ga steel: Pewter finish, oyster crepe, flag panel

\$2835



NEW HORIZON



The New Horizon is an 18ga steel gasketed casket with several combinations: all white finish, white crepe, bronze finish, rosetan crepe, metallic blue finish, blue crepe, orchid finish, pink crepe, powder blue finish, blue crepe, all white finish, pink crepe,

\$2460



V-RAY



The V-Ray is a 20ga steel gasketed casket in several combinations: Pewter finish, Oyster crepe or Orchid finish, pink crepe or Bronze finish, rosetan crepe or Metallic blue finish, blue crepe or Almond finish, rosetan crepe or Metallic black finish, oyster crepe

\$2515



COLONNADE

The Colonnade is an 18 ga steel gasketed casket available in several finishes and interior combinations: Almond finish, natural velvet, Bronze finish, natural velvet interior. Metallic blue finish, natural velvet interior, Powder blue finish, natural velvet interior or Silver finish, natural velvet interior. Each comes with a choice of handrail and corner decals.

\$3220



Choice of Handrail Decals



Standard Hardware Stamp



Prayer Hands Oval



Star Oval
Silver Only



Rose Oval
Silver & Bronze



Starburst Oval
Silver & Bronze



Heart Oval
Silver Only

TREMONT

The Tremont is a 20ga steel gasketed casket available in 4 combinations Blue shaded silver, blue crepe, Copper shaded ebony, rosetan crepe, Silver shaded ebony, oyster crepe, White shaded Orchid, pink crepe.

\$2260



DALTON



The Dalton is a 20 ga steel: non-gasketed casket available in either a Bronzetone finish with rosetan crepe or Light blue, blue crepe or Silver, ivory crepe or White finish, Pink crepe

\$2195



DALTON

Dalton 20 ga steel: Silver, ivory crepe

\$2195



Dalton 20 ga steel: White finish, Pink crepe

\$2195



ALEX

The Alex is a basic 20ga steel non-gasketed unit available in either sparkle silver finish, Oyster crepe or sparkle copper finish, Rosetan crepe

\$1675



WINSTON



The Winston is a non-gasketed unit constructed of fiberboard/cardboard with a Doeskin cloth covered, ivory crepe

\$1095.00

CLAIR



The Clair is a basic 20ga steel non-gasketed unit available in the following combinations: Silver finish with Oyster crepe, Copper finish with rosetan crepe, White finish with white crepe, Blue finish with blue crepe

\$1815



Accommodations Casket Selections

Accommodations product line provides a comprehensive assortment of generously proportioned caskets to meet the needs of larger individuals. Accommodations caskets are available in a variety of attractive styles, colors and materials, from bronze to non-gasketed steel to several wood species. Personalization is available on some units.

Because we proudly serve all faiths and beliefs, we also offer a line of Orthodox Caskets. These caskets are constructed in accordance with Orthodox religious beliefs.

The following pages include available caskets from the Accommodations line.



CONTINENTAL



The Continental is a 20ga steel gasketed unit with the following combinations: Bluetone finish, blue crepe, 28" inside width, Bronzestone finish, tan crepe, Silver finish, ivory crepe, White finish, Ivory or pink crepe. This casket is 28" wide inside and fits a standard vault

\$3285



Continental 20ga steel:bronze finish, tan crepe. 36"inside width **REQUIRES OVERSIZED VAULT**

\$5715



ENDEAVOR

The Endeavor casket is constructed of hard wood, is non-gasketed and is available in 27" or 30" inside widths, it features an Embassy gloss finish and beige crepe interior

27 " \$2870
30" \$3125*

*REQUIRES OVERSIZE VAULT



SHELTON

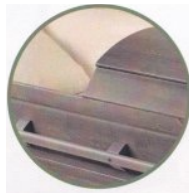
The Shelton is constructed of solid hardwood is non-gasketed and features a Pecan satin finish with rosetan crepe interior. 27" inside width:

\$4130

LOGICA

Constructed of solid poplar, 100% natural cotton interior. Available in Rust Brown or Grey finish

\$3220



NEW LEAF COLLECTION

Designed for families who value the planet as much as their loved one's memory, these Eco-Conscious Caskets offer a gentle, sustainable choice—honoring both nature and life's most meaningful moments. These caskets are made of entirely natural materials and are approved by the Green Burial Council



SOMERSET

Constructed of solid maple, 100% natural cotton interior

\$3630



NATURA

Constructed of solid poplar, 100% natural cotton interior, unfinished

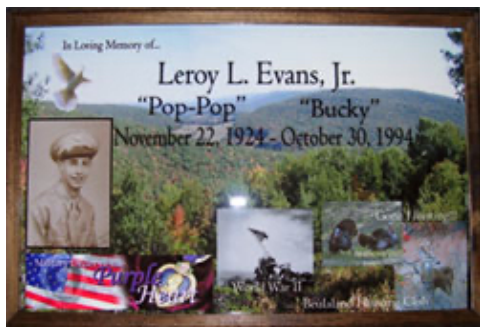
\$2690





**When someone
you
love becomes a
memory
that memory
becomes a
treasure**

Adult Burial Enclosures



Adult Burial enclosures are an integral part of a proper interment. Burial enclosures can be defined as a container that encloses a casket in the grave. Their purpose is another level of protection of your loved one. The burial enclosure is placed in the grave and then the casket is lowered into the burial enclosure. Adult Burial enclosures are constructed of various materials from concrete to polystyrene, steel, galvanized steel, copper and bronze. An Adult Burial enclosure provides protection to the casket and the weight of the ground. Many Adult Burial enclosures seal, some do not. Below is a description about sealing properties.

We work together with Lancaster based family owned and operated Evans Burial Vaults (www.evansburialvaults.com). Most options are constructed on site at Evans. Other options we offer are manufactured by Doric Burial Vaults, a company based in the USA.

The Way Vault Seals Work

By using a butyl rubber sealing compound, it hermetically bonds the V-shape base and cover into a single moisture

resistant unit.

Customized Name Plates

Included with the vault purchase is a customized nameplate which adheres to the burial vault. This is available on all models of vaults beginning with the Titan model and above. Plates can be completely customized to meet the beliefs, hobbies and interests of our loved one.

Perhaps your loved one was a veteran, had a garden that they treasured or celebrated their ethnic heritage. Whatever their interests, a plate can be fully customized to include their name, year of birth and year of death. In addition, you can include a special verse, poem, quote or photo.

A keepsake framed memorial plaque is included with the purchase of any vault from the Titan and above. Additional keepsake plaques can be purchased for \$50.00 each.

Disclaimer

Our funeral home makes no representations or warranties regarding outer burial containers. The only warranties, expressed or implied, granted in connection with good sold with this funeral service are the express written warranties, if any, extended by the

manufacturers thereof. No other warranties, including the implied warranties of merchantability or fitness for a particular purpose are extended by the seller.

Outer Burial Enclosures



DORIC BRONZE: Triple wall protection combines the durability of reinforced concrete with a Fiberlon® plastic liner for added protection and the beauty of a bronze inner liner for extra strength. Cover carapace is also covered in gleaming bronze.

Bar handles add subtle elegance.

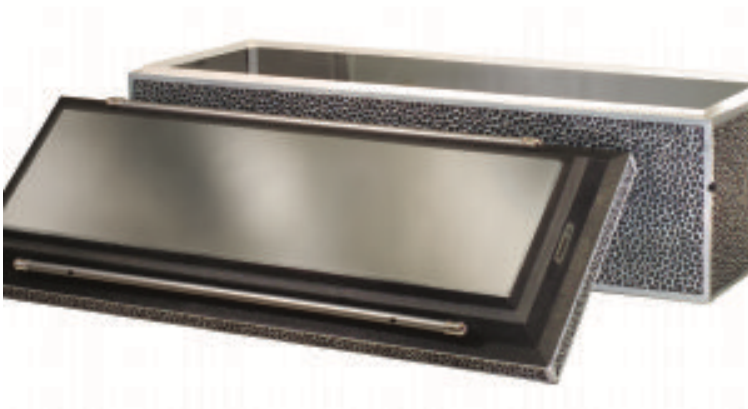
\$6025



LYDIAN: Premium triple wall protection. 5000PSI reinforced concrete with Copper inner liner bonded to a high impact ABS Fiberlon® styrene liner with strengthening ribs on all sides for added protection.

A Copper name plate and rose emblem adorn the matching carapace. Bar handles add subtle elegance.

\$5845



ATHENIAN: Triple wall protection combines the durability of reinforced concrete with a Fiberlon® plastic liner for added protection and the beauty of a stainless steel inner liner for extra strength. Cover carapace is also covered in brilliant stainless steel.

Bar handles add subtle elegance.

\$4270



PATRICIAN: Double wall protection combines the durability of reinforced concrete with a Lustra-Tech® plastic liner with strengthening ribs on all sides for added protection.

Matching cover carapace also uses Lustra-Tech® for an elegant marble-look finish in your choice of symbolic Greek key and wheat designs or cathedral window style.

\$2740

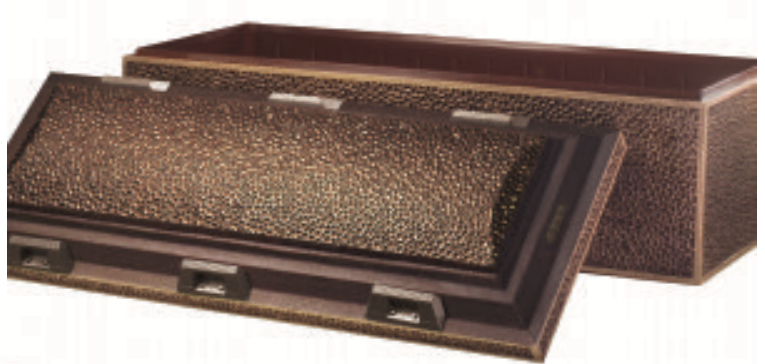


The Corinthian burial vault, renowned for its elegant aesthetics, is constructed from high-strength concrete bonded to a polystyrene structure for enhanced durability and protection. It offers families the option of a simulated marble or stone finish. Decorative moldings and attractive corner columns accentuates the timeless appearance of this popular vault.

\$3310

TIARA: Double wall protection combines the durability of reinforced concrete with a Durapreme® polystyrene plastic liner with strengthening ribs on all sides for added protection. Matching cover features six decorative handles for added beauty.

\$2500

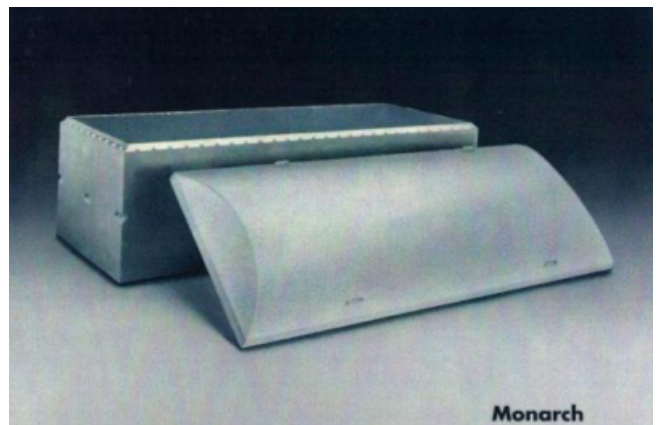


TITAN: Basic Double wall protection 5000PSI reinforced concrete with a Durapreme® polystyrene plastic liner with strengthening ribs on all sides for added protection. Minimum lined unit.

\$2280

Guardian: Constructed of high-strength reinforced concrete with a pyramid "V" type tongue-in-groove seal bonding cover to base to form a single integral unit.

\$2030



Graveliner: scientifically engineered to provide basic grave protection at minimum cost. No seal

\$1830

CEMETERY SETUP SCHEDULE OF CHARGES

Greens, device, chairs & Tent	\$310
-------------------------------	-------

(Included in vault price)

Extra Tent	\$235
------------	-------

Cremation Interment	\$410
Tent, Table, Chairs & Greens	

Baby Set up	\$410
Tent, Table, Chairs & Greens	

Additional Charge (Saturday)	\$225
------------------------------	-------

Additional Charge (Sundays)	\$450
-----------------------------	-------

Holidays: New Years, Memorial Day, July 4, Labor Day	\$450
Additional	

Easter, Thanksgiving & Christmas	
Additional	\$500

GREEN BURIAL



WHAT IS GREEN BURIAL?

Green, or natural burial is a way of caring for the deceased with minimal environmental impact that aids in the conservation of natural resources, reduction of carbon emission, protection of worker health, and the restoration and/or preservation of habitat. Green burial necessitates the use of non-toxic and biodegradable materials, such as caskets, shrouds, and urns (Source: Green Burial Council)

WILLOW PACKAGE

Our willow green burial option includes:

- *Transfer of deceased from place of death to funeral home
- *Sanitation, shrouding and/or casketing of deceased for identification (in approved green burial products)
- *Immediate family identification during normal business hours (30 minutes)
- *Refrigeration (up to 4 days)
- *Use of facilities for above procedures
- *Arrangements consultation with family for selected services, notifications, obtaining necessary signatures and authorizations
- *Preparation and filing of necessary authorizations and consents
- *Contacting and arranging with other outside agencies, such as newspapers, cemetery, florist, clergy, etc.
- *Transfer to cemetery for graveside service
- *Cost of approved green burial casket not included.

\$3730

DUNE GRASS PACKAGE

Our Dune Grass Package green burial options includes:

- *Transfer of deceased from place of death to funeral home
- *Sanitation, shrouding and/or casketing of deceased for identification (in approved green burial products)
- *Immediate family identification during normal business hours (30 minutes)
- *Refrigeration (up to 4 days)
- *Use of facilities for above procedures
- *Arrangements consultation with family for selected services, notifications, obtaining necessary signatures and authorizations
- *100 Memorial Folders 1 register book
- *Preparation and filing of necessary authorizations and consents
- *Contacting and arranging with other outside agencies, such as newspapers, cemetery, florist, clergy, etc.
- *Transfer to cemetery for graveside service
- *Cost of approved green burial casket not included.

\$4195

WILDFLOWERS PACKAGE

Our Dune Grass Package green burial options includes:

- *Transfer of deceased from place of death to funeral home
- *Sanitation, shrouding and/or casketing of deceased for identification (in approved green burial products)
- *Immediate family identification during normal business hours (30 minutes)
- *Refrigeration (up to 4 days)
- *Use of facilities for above procedures
- *1 Hour Visitation and Funeral Service following Visitation in the funeral home
- *Arrangements consultation with family for selected services, notifications, obtaining necessary signatures and authorizations
- *100 Memorial Folders 1 register book
- *Preparation and filing of necessary authorizations and consents
- *Contacting and arranging with other outside agencies, such as newspapers, cemetery, florist, clergy, etc.
- *Transfer to cemetery for graveside service
- *Cost of approved green burial casket not included.

\$4850

CREMATION OPTIONS



Nothing is more overwhelming than the death of a loved one. The ability to make informed decisions can help you along this path. Bringing friends and family together to celebrate a cherished life is part of the healing process, and is best served through a personalized tribute and ceremony.

When you choose cremation, it is important to not only capture the memories and celebrate the spirit of your loved one, but also provide healing through gathering together, paying tribute and celebrating a life well lived. Our mission is to ensure that this special, emotional and necessary time for healing receives the utmost attention. We are here to provide knowledge and guidance, lighting your path as you commemorate the life of your loved one.

We offer a wide variety of cremation containers and caskets for the families we serve that select Cremation Services. Cremation Containers and Caskets are available in hardwood, cherry wood, composite wood and cardboard.

In addition, we are pleased to offer a variety of cremation urns from simple to craftsman style in both metal and wood construction. Several urn selections also include keepsake sizes. Also available are biodegradable urns. If you have a special color or style in mind we have catalogs available with other options.

CREMATION OPTIONS

Complete Cremation Service.....\$6,170

Twenty-four hour/365 days per year availability;
Administrative expenses; Arrangements Conference;
Planning, Supervising, Coordinating service details with those involved in the funeral service; Securing, Preparing, and Filing necessary permits, certificates, authorizations, and consents; Clerical and Record Keeping; Embalming; Other Preparation of the Body; Transfer of Remains; Viewing & Visitation; Funeral Ceremony at Funeral Home or other location; Lead/Clergy/Errand Car; Crematory Fee.

Standard Cremation with a Memorial Service/ Celebraton of Life \$5,930

Twenty-four hour/365 days per year availability;
Administrative expenses; Arrangements Conference;
Planning, Supervising, coordinating service details with those involved in the funeral service; Securing, Preparing, and Filing necessary permits, certificates, authorizations, and consents; Clerical and Record Keeping; Embalming; Other Preparation of the Body; Transfer of Remains; Private Viewing; Visitation; Memorial Service at the Funeral Home or other location; Crematory Fee

Cremation with a Memorial Service/Celebration of Life and 1 Hour Visitation /Graveside Committal.....\$5,310

Twenty-four hour/365 days per year availability;
Administrative expenses; Arrangements Conference;
Planning, Supervising, coordinating service details with those involved in the funeral service; Securing, Preparing, and Filing necessary permits, certificates, authorizations, and consents; Clerical and Record Keeping; Other Preparation of the Body; Transfer of Remains; Viewing/ Visitation; Memorial Service at

Cremation with a Memorial Service/Celebration of Life and 1 Hour Visitation.....\$4,830

Twenty-four hour/365 days per year availability;
Administrative expenses; Arrangements Conference;
Planning, Supervising, coordinating service details with those involved in the funeral service; Securing, Preparing, and Filing necessary permits, certificates, authorizations, and consents; Clerical and Record Keeping; Other Preparation of the Body; Transfer of Remains; Viewing/ Visitation; Memorial Service at the Funeral Home or other location; Crematory Fee.

Cremation with Graveside Service.....\$3,840

Twenty-four hour/365 days per year availability;
Administrative expenses; Arrangements Conference;
Planning, Supervising, coordinating service details with those involved in the cremation service; Securing, Preparing, and Filing necessary permits, certificates, authorizations, and consents; Clerical and Record Keeping; Other Preparation of the Body; Transfer of Remains; Graveside Service; Hearse to Cemetery; Lead/Clergy/Errand Car; Crematory Fee.

Direct (Basic) Cremation Service.....\$3,600

Twenty-four hour/365 days per year availability;
Administrative expenses; Arrangements Conference;
Planning, Supervising, coordinating service details with those involved in the cremation service; Securing, Preparing, and Filing necessary permits, certificates, authorizations, and consents; Clerical and Record Keeping; Other Preparation of the Body; Local Transfer of Remains; Temporary Shelter (up to 24 hours); Minimum Alternative Container; ID by Next of Kin; Crematory Fee.



CASH ADVANCE ITEMS

Please note, the fees listed above do NOT include the following Cash Advance Items. Cash Advance Items may include the following: grave opening, crematory fee, flowers, honorariums, obituary, vault set up fee, cremation authorization, certified copies of death certificate. Cash advances are charges that are paid for by the funeral home on behalf of the family. In order to better assist you with determining these fees, below is a range of charges

Grave Opening	\$500-42000
Flowers	\$150-\$500
Honoaraiums	\$150-\$300 per person
Cremation Vault set up fee	\$410
Cremation Authorization Fee	Cumberland County \$50
	Dauphin County \$50
Certified Copies of Death Certificate	\$20 each

Cremation Containers & Caskets



Economy: cardboard container
provides basic dignity for deceased
\$75



Chaise Viewer: hardwood case with
interior cardboard container. Suitable
for viewing (at funeral home
only)prior to cremation
\$550



Summit: Embossed gray
cardboard, ivory crepe
\$1095



Patterson: Veneer, Grand
Walnut Finish, Champagne
Velvet
\$2075



Estate: Veneer,
Golden cherry finish,
Rosetan crepe
\$2160



Bancroft: Mountain pine
finish, beige linwood
interior
\$2450



Quincy: Dark Cherry
Veneer, Rosetan Crepe
\$2040



Wharton: Solid Poplar, Red
Satin Finish, Rosetan Crepe
\$2480



Ranier: Veneer, Golden Cherry
Finish, Rosetan Crepe
\$1925



Rosemont: Veneer, Cherry
Finish, Rosetan Crepe
\$ 1815



Glenwood: Veneer, Oak
Finish, Rosetan Crepe
\$1815



Stockton : Veneer, Pine Finish,
Rosetan Crepe
\$1330

URN SELECTIONS



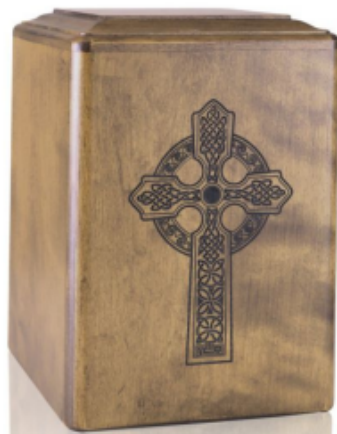
**Forget Me Not Ceramic Urn in Blue, Green or
Red
\$240**



**Cerulean Blue Marble Bronze
\$165**



**Montgomery Black Wood
\$210**



**Celtic Cross Wood
\$310**



Basic Brass. \$85

URN SELECTIONS



Kinder Oak
Engravable at additional cost



\$120



Blue Floral Brass Urn

\$190



Personalized Life Treasure Urn

\$245



Classic Mother of Pearl Brass

\$235



Artisanal Brass Urn

\$190

URN SELECTIONS



Timelss Eagle & Flag Brass Urn

\$215



Timeless Celtic Cross Brass Urn

\$190



Amerian Glory Brass Urn

\$190



Shasta Wood Urn
Availabile in Walnut, Cedar
or Oak

\$360



URN SELECTIONS

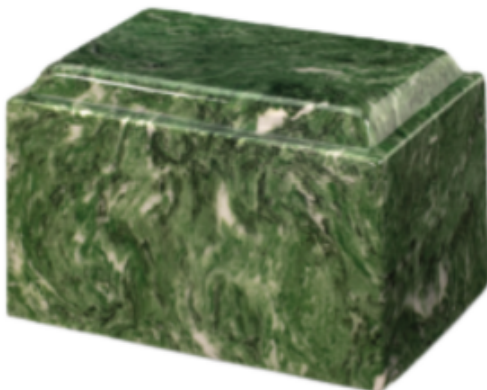
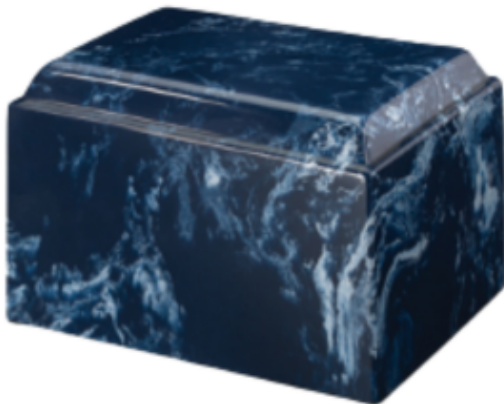


Devotion Wood Urn

\$210

CULTURED MARBLE URNS
Available in Blue, Purple,
Green, White or Black

\$450



RAKU Cermaic Urns

\$260



Thundering Deer



Earth's Memorial



Western Garnde



Ancient Spirits



Spirit Wolves



Sea Turtles

Biodegradable Urns

URN SELECTIONS

Comfort Heart Paper Urns
Blue, Red or Ivory
\$125



**Himalayan Salt
Urn**
\$295



Lagune Water Burial Urn
\$210



Fairwinds Water Burial Urn
\$250

Please see our catalog or on line store from
more selections

CREMATION VAULTS



CONCRETE A Constructed from highly durable concrete with a lid that seals and copper tone finish. \$500



MONTICELLO constructed of highly durable concrete, single reinforced protection, cover and base lined with plastic \$730



CORINTHIAN Thermoformed polymer layers inside and out protect the concrete core and add stability for protection. Includes intricate details and decorative corner columns \$1010



SEVILLE Single reinforced protection, strongest single reinforced vault, rich look of polished marble on top. High strength concrete with high-impact plastic cover, base and lining \$880



STAINLESS STEEL Double reinforced protection, radiant purity of stainless steel, durable concrete exterior. Cover and base lined with stainless steel and high-impact plastic. \$1120



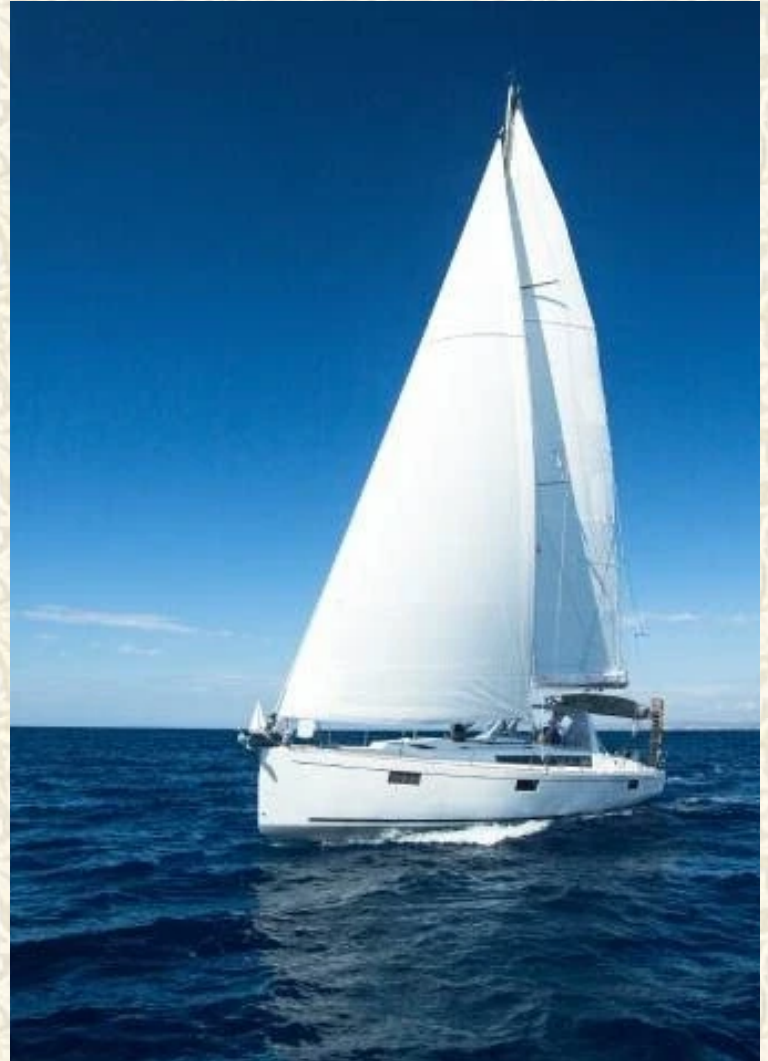
COPPER Double reinforced protection, regal elegance of copper, durable concrete exterior. Cover and base lined with copper and high-impact plastic. \$1270



BRONZE Double reinforced protection, classic beauty of bronze. Durable concrete exterior. Cover and base lined with bronze and high-impact plastic. \$1340

**"We Remember Them" by Sylvan Kames &
Rabbi Jack Riemer**

**At the rising sun and at its going down; We
remember them.
At the blowing of the wind and in the chill of
winter;
We remember them.
At the opening of the buds and in the rebirth
of spring;
We Remember them.
At the blueness of the skies and in the warmth
of summer;
We remember them.
At the rustling of the leaves and in the beauty
of the autumn;
We remember them.
At the beginning of the year and when it ends;
We remember them.
As long as we live, they too will live, for they
are now a part of us as We remember them.
When we are weary and in need of strength;
We remember them.
When we are lost and sick at heart;
We remember them.
When we have decisions that are difficult to
make;
We remember them.
When we have joy we crave to share;
We remember them.
When we have achievements that are based on
theirs;
We remember them.
For as long as we live, they too will live for
they are now a part of us as,
We remember them.**





PERSONALIZATION OPTIONS

We offer a wide variety of options to personalize merchandise to commemorate the life of your loved one. the following pages describe each and list available options.



Casket Corner Collection

Added to the corners of the casket or displayed on a memory table, corner designs are a touching expression of the personality, spirit and interests of a loved one. These popular casket enhancements are also used as individual keepsakes for family and friends and include themes like gardening, patriotism, sports, spirituality and hobbies. You may select 4 of the same design or 4 different designs. These are available on the following caskets: Affinity 20 ga steel, Ashland, Jackson Pecan, Newington and Carlyle. Additional designs are \$200 each set.

Casket Panels

At the core of any meaningful funeral is a truly personal remembrance ~ a celebration of what is unique about the person being honored. A personalized casket is the most visible way to reflect the special memory of a loved one. You may select a personalized portrait panel of embroidered interior panel design to create not only a memorable service, but a heartfelt expression of a loved one's life.

*With the Chameleon
Collection
each casket is personalized!*

A Large selection of Easy-Fix
Corners and Cap Panels

A personal touch for a Lasting and Memorable Tribute

CHRISTIAN CROSS



CELTIC CROSS



PRAYING HANDS



COLOR ANGEL



WHEAT



TRIPLE ROSE



MAPLE LEAF



GARDENING



FISHING



LIGHTHOUSE



MASONIC EMBLEM



KNIGHTS OF COLUMBUS



ANGEL



PIETA



PICTURE FRAME



CUSTOM CASKET PANELS

Our full couch cap panles are custom seized for any casket brand. They are printed in rich, vibrant colors on sating fabric and hand assemble to a strudy foram core base. There are hundreds of custom background desings and thee to choose from...and with up to five photos and multiple lines of custom text, our cap banels are a on-of-a-kind addition to your service.

You can choose from stock designs or you can customize any design with photos, text and graphics. Full-Couch Cap Panels make a statement. The panel enhances the casket. The personalization possible with a full-couch cap panel is astounding and simple to create. We guarantee you satisfaction and know you will be amazed. The presentation takes the casket from ordinary to extraordinary.

GLASS REMEMBRANCES

Glass Remembrances are created by glass artists who create works of art that contain a small portion of the actual cremated remains of your loved one. All of the cremains are handled separately and used individually. All pieces are custom made to your order; therefore, please allow sufficient time to create your glass memorial, especially during the holiday season. On average, allow 5-6 weeks for delivery. Please consult your funeral director for a complete listing of available products, and color options.



Eternal Flame: Artfully crafted in glass using a small portion of cremated remains. Choice of colors.

Estra Small \$300

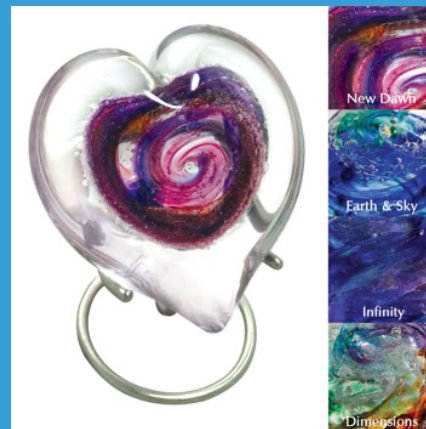
Small \$440

Medium \$895

Large \$2295



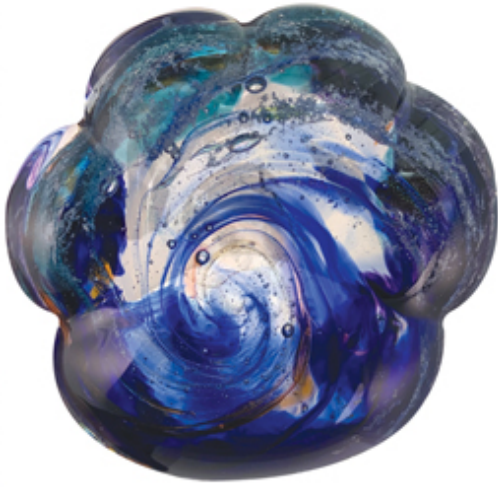
Spheres. Small\$ 300 Large\$440



Forever Heart \$200

Standing Forever Heart \$220

Big Heart \$440



Pet Paw \$250

Birds \$220

Tribute Wave \$500



Round wood base \$40



Round Base 4" Cherry/Maple
\$140



Round Base 5" Cherry/Maple
\$160



Slim Plastic Base



Square Base \$40



Square Base Maple/Cherry \$160

FOREVER IN GLASS

Using a small portion of cremated remains, the artist creates one of a kind keepsake. No two are exactly the same. They are fully warranted and can be repaired at no cost. No additional cremains are needed. Following are some examples. Please consult us for a full



Pendants. \$175

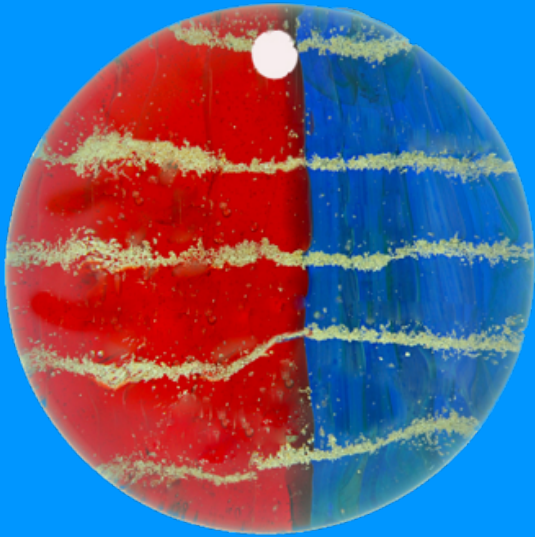


Paperweights. \$280

Keepsake Beads \$175



FOREVER IN GLASS



Suncatchers \$185

Cufflinks \$175



Healing Stones \$185

CREMATION JEWELRY



Many families choose a keepsake to create a lasting remembrance of their loved one close with a fashionable jewelry piece in a man or woman style. Consider a matching piece for family members to share a special, lasting bond. All charms include a chain.

Can be ordered directly from Thumbies site.
Cost varies

THUMBIES

These charms contain the actual fingerprint of your loved one. Available in Sterling Silver, 14k Yellow Gold or 14K White Gold, standard and grand size. A birthstone can also be added to the charm. These charms are a wonderful way to honor your loved one, adult or child.

Thumbies are created from the actual finger, foot or handprint of those we hold dear. Artisans create a three dimensional wax mold that is then cast in precious metal using the ancient art of lost wax casting. Engraved and polished, perhaps embellished with a stone or chain, these one-of-a-kind keepsakes keep us coming back to the stories that connect us to the people we love.

Charms for your pet are also available.

Charms are ordered by you directly from the company on line. Cost reflects the current market price of the precious metal you select.



SAME
DAY
SHIPPING



MEMORY PORTRAITS

A lasting tribute that celebrates the unique life of your loved one. A professional designer takes the scanned photo of your loved one and combines it with the theme and style you choose to create a unique and personal celebration of life tribute. You may choose from dozens of different styles and background themes—spiritual, nature, contemporary, lifestyle, military and more. Several photos can be used if you desire. A popular way to personalize your funeral service with a dramatic custom funeral portrait centerpiece.

\$150-\$250



TRIBUTE BLANKETS

Blankets make very impressive memorial displays and will also comfort and help families with the healing process. Long after the service is over, the blanket will be there to comfort your loved ones and will stay with them on the couch whenever they need a hug. Generously sized at almost six feet by 4 ½ feet, this environmentally friendly blanket is made of 100% cotton and is Woven in the USA.



Blanket



Pillow

These blankets are Jacquard woven, never printed. Made from luxurious 100% cotton, they last for years and provide you with a lifetime of memories. They are delivered in time for your service.

Blanket: \$175 Pillow: \$130

PERSONALIZED CANDLES



We are pleased to offer personalized memorial candles to commemorate the life of your loved one. They can be customized to celebrate anniversary milestones, a new baby or birthday. These candles are round and unscented and can be customized with any of our designs or if you have a special graphic background you would like to use, we can fully customize one for you. You provide us a good quality photograph and we do the rest. You may choose a recent photograph or one from days past. Orders take approximately 1-2 weeks to complete. We will call when your order is ready.

\$15 each

LAMINATED OBITUARIES

Experiencing a death is a traumatic experience, yet you can take pride and comfort in the obituary notice, a special tribute to a special person.

A copy of your loved one's laminated obituary is a perfect keepsake that you may keep for years to come.

At Ronan Funeral Home, we provide 4 laminated obituaries for you to keep. Additional copies may be ordered.

If you would like to obtain extra copies for yourself or family members or special friends, please contact us.

Laminated obituaries	\$3 per copy
Laminated Memorial Folders	\$3 per copy
Laminated Holy Cards	\$3 per copy



MEMORIAL VIDEOS

We are pleased to offer custom created Life Memorial videos. With over 50 different themes to choose from, you can create a tribute that commemorates the life of your loved one. A memorial tribute is the perfect keepsake for family members for generations to come. Videos can also be produced for life celebrations such as marriage, graduation or birthdays.

If a family wishes to create their own video to be uploaded to our system, a \$75 upload fee will apply. The completed file MUST be emailed to the funeral home in .mp3 format. Power Point presentations which have to be converted will incur an additional \$50 file conversion fee. All completed files must be emailed a minimum of 48 hours prior to the service date.

While the video will be played during the services, it can also be played in the comfort of your home. Additionally, a link can be placed on our website.



Family and friends provide photos in several ways:

- Hard copies of photos are given to the funeral home to be scanned (originals will be returned to family)
- We will provide a link to the legal next of kin or appointed family member to upload photos electronically
- Photos can be emailed to the funeral home
- Photos can be provided on a disc or jump drive.

We will then take the photos and create a fully custom memorial video that can be playing during the viewing/visitation, memorial service or at the gathering at the conclusion of services. We will crop, photoshop and provide transitions of the photos as well.

Family can select a theme (gardening, Beach, Golfing, Fishing, Lighthouses, hunting, military) and up to 5 songs for the background (longer videos may require additional songs.)

Additional copies can be purchased as well. Please ask us for more information. Concerned about photo quality?... ask us regarding photo guidelines.

Please note, all photos must be received/ uploaded by the funeral home 3 days before services to allow for production time. Additional time requirement for larger amount of photos may be required.

DVD Pricing

30-50 Photos	\$175
51-100 Photos	\$200
100-150 Photos	\$250
File conversion fee <small>(for files not created in house)</small>	\$ 50
Upload fee <small>(for files not created in house)</small>	\$ 75
Additional Copies	\$ 15 each

GRAPHIC DESIGN SERVICES

We are pleased to offer top quality graphic design services. We offer top quality custom materials which are printed on a high quality color-laser printer. We also offer a top quality scanner and custom made DVD's.

Our facility features a fully integrated sound and video system.

Our printed materials include memorial folders, register books, holy cards, funeral programs and bookmarks. We work closely with the family to ensure their wishes are converted to a lifetime keepsake.

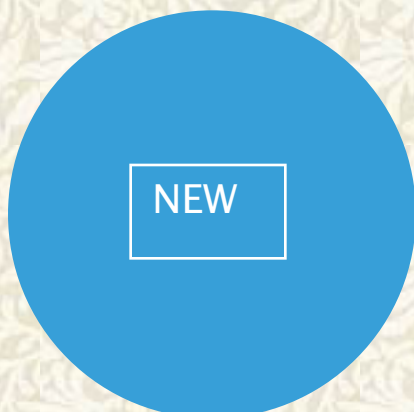
The following pages describe samples of our work, as well as pricing. Please contact us with any questions and we will do our best to accommodate you.

Memorial box sets include a register book, 100 memorial folders/holy cards, and 50 thank you cards.

Additional fees will apply for quantities than those listed above.



MEMORIAL CARDS



A new product we offer is custom memorial cards. Available in two different sizes, 4 print on either 8.5X11 paper or 8.5X14 paper. These are blank and can be completely customized. The front side can be a photo of your loved one, with a background of their favorite hobby and the back can be funeral information or the obituary.



Quantity:	Cost:
100	\$75
125	\$90
150	\$110
200	\$135

after 200 - \$25/100

MEMORIAL FOLDERS

WE FEATURE SEVERAL DIFFERENT CHOICES OF PRE-DESIGNED PAPERS. ALL MEMORIAL FOLDERS COORDINATE WITH MATCHING REGISTER (GUEST) BOOK AND ACKNOWLEDGEMENT CARDS. THE INSIDE LEFT PANEL WILL CONTAIN A VERSE, PRAYER OR POEM WITH A PHOTO. INSIDE RIGHT PANEL WILL INCLUDE DECEASED NAME, DATE OF BIRTH AND DEATH, SERVICE INFORMATION, CLERGY, PALLBEARERS (IF DESIRED) AND LOCATION OF INTERMENT (WHERE APPLICABLE).

CUSTOM FOLDERS INCLUDE:

Paper selection will be Satin Border, a rich, heavy cardstock with a beautiful pre-printed satin effect border; custom front cover using photo of deceased or other image from our collection, custom inside left panel with prayer, poem or verse. Right panel will include service information as stated above. All printed materials are printed using high quality color laser printer.



Bridge of Faith



Gracious Garden



Whispering Woods



Family Tree



Cafe' Shimmer



Garden of Promise



Rustic Retreat



Botanical Butterfly



Autumn Harvest



On Freedom's Wings

Quantity:

100
125
150
200

Cost:

\$80
\$90
\$110
\$135

after 200 – \$25/100

Our Box Sets include register (guest) book, 100 coordinating memorial folders/prayer cards and 50 acknowledgement cards

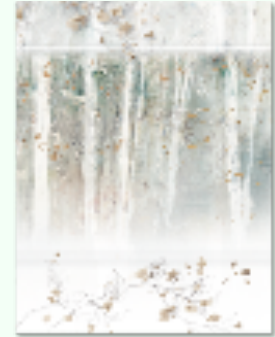
REGISTER BOOKS BOX SETS

Each book includes:

- Each book is custom designed to match the religion, hobbies, employment and education of the deceased
- Pages include: cover page, vital statistic information, veteran's service (where applicable), family members, employment, memberships, hobbies, organizations, pallbearers (where applicable) and obituary.
- We encourage you to provide us with photos (5 maximum) to include in the register book
- You may choose different options of memorial folders and register book
- All printed materials are printed using high quality color laser printer.



Gracious Garden



Whispering Woods



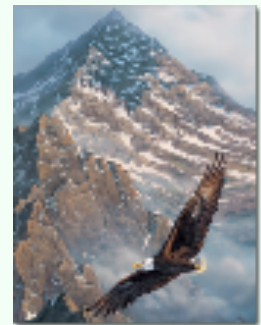
Bridge of Faith



Rustic Retreat



Garden of Promise



On Freedom's Wings



Family Tree



Cafe' Shimmer



Botanical Butterfly



Autumn Harvest

BOOKMARKS

Our fully customized bookmarks include deceased name, date of birth and death, photo or other graphic. We will discuss your wishes for design ideas. Poem or verse selected by family. Reverse side will be printed with obituary (where applicable). All printed materials are printed using high quality color laser printer.

Quantity:	Cost:
100	\$75
125	\$100
150	\$125
200	\$150
after 200	\$25/100



Example Only

FUNERAL PROGRAMS

TRIFOLD

8.5X11 sheet, folded in three panels, full color high laser quality print on laser matte, inside lists order of service, names of readings, song titles, poem/prayer. Front Cover includes title page, photo of deceased (when desired) & background image. Back cover can include additional prayer, poem, verse, obituary photos and personalized thank you from the family. Flat fee for graphic design: \$200.00 + quantity of prints. Quantity after 200=\$35/100)

100	\$80
125	\$100
150	\$125
200	\$150

Half Fold

8.5X11 sheet, folded in half, full color high laser quality print on laser matte, inside lists order of service, names of readings, song titles, poem/prayer. Front Cover includes title page, photo of deceased (when desired) & background image. Back cover can include additional prayer, poem, verse, obituary photos and personalized thank you from the family. Flat fee for graphic design: \$200.00 + quantity of prints. Quantity after 200=\$35/100)

100	\$80
125	\$100
150	\$125
200	\$150



FULL PROGRAM

8.5X14 sheet, folded and stapled at spine. Full color high laser quality print on laser matte paper. Inside lists order of service, readings, song sheets, poem or prayer, participants, family members. Front Cover includes title page, photo of deceased (when desired) & background image. Back cover can include additional prayer, poem, verse, obituary, photos and personalized thank you from the family. Flat Fee For Graphic Design: \$200 + quantity of prints. Quantity after 200+\$35/100

100	\$100
125	\$125
150	\$150
200	\$175



PHOTO BOOKS



Photo Books make the perfect keepsake for families. Many families are bringing you photos to scan and organize for use in their loved one's Memorial Tribute Video. Why not take these photos that usually go home with one person and turn them into a beautiful, shareable keepsake?

- Features hard cover and hard bound pages
- 11" w x 8.75" h folded
- Includes 20 standard pages (10 sheets)
- Accommodates 40 photographs
- Lead time for this product is 3-5 days
- Changes to standard layout such as adding additional photos will incur additional fees
-
- \$300.00
-
-
- Variety of theme available, please ask us for specifics.

***Family Owned &
Operated For Over 25 Years***

Value & Price

We are dedicated to providing exceptional value at a fair price

Our Promise

We promise to provide you and your family an exceptional celebration of your loved one's life at a price you can afford.



Advance Funeral Planning Provides You And Your Family With Distinct Benefits

Peace of Mind

It's good to know these inevitable arrangements are taken care of and that your family will not be burdened with additional decisions at a time of great emotional stress.

It is also reassuring that you have done all that you could to avoid family disagreements over what you would have wanted.

Economy

You save money as you control the cost and inflation. Protect your arrangements with a locked-in written price guarantee that will never increase to your family. Cash Advance Items are excluded from the price guarantee. Interest earned on the invested money is used to offset any price increases on services and merchandise.

Personal Choice

You can make all the decisions regarding how simple or elaborate your services are, who should be in charge, what is the appropriate merchandise, select your clergy person and even choose the scripture passages, music and pallbearers, right down to the smallest detail.

Social Security & Veteran Benefits

When the time comes, we take care of all the paperwork to ensure your survivors receive all the benefits to which they are entitled.

