

Building for Our Future

Queen of the Apostles Parish & School Expansion Project

Tomah, Wisconsin

Our Vision

Queen of the Apostles Parish is embarking on an exciting expansion that will strengthen both our educational mission and our ability to serve the broader community. This will provide the space we need to continue growing our impact in Tomah and the surrounding area.

The Need

Growing School, Limited Space Our school has flourished, now serving students from 3K through 8th grade. As we've expanded into 7th and 8th grades, we've outgrown our current facility and lack adequate classroom space for our growing enrollment.

Parish Ministry Challenges Currently, our parish activities—council meetings, OCIA (Order of Christian Initiation of Adults), youth outreach, and spiritual counseling—are conducted in makeshift spaces that don't reflect the dignity and importance of these ministries. We've been "making do" with inadequate facilities, sometimes placing visitors learning about our faith in spaces that aren't welcoming or appropriate for spiritual formation.

The Solution: A \$1.25 Million Investment in Our Future

Our expansion will include:

For Our School:

- 2 New Classrooms to accommodate 3k through 8th grade
- Enhanced educational opportunities and better learning environments

For Our Parish:

- 1 Shared Meeting Room for gatherings and events
- Dedicated Parish Offices for outreach, meetings, and pastoral support
- Improved Access with separate entrances that maintain school security while welcoming the public

- Professional Spaces for religious education, OCIA, council meetings, and spiritual counseling

The Impact

Educational Excellence

- Capacity for grades 3k-8th
- Better classroom environments supporting academic achievement
- Room to grow and serve more families

Enhanced Parish Ministry

- Dignified spaces for spiritual formation and counseling
- Accessible facilities for community outreach
- Professional meeting environments for parish activities
- Improved security with separate parish and school access

Community Benefit

- Expanded access to parish facilities during school hours
- Better gathering spaces for community events
- Enhanced spiritual and counseling services

Project Timeline

- Spring 2026: Break ground (post-thaw)
- Fall 2026: Project completion
- Goal: Complete entire addition at once for maximum efficiency

Recognition Opportunities

Commemoration Levels:

- \$5,000: Name displayed on donor recognition plaque
- \$15,000: Name prominently displayed on donor recognition plaque
- \$25,000+: Name featured on donor recognition plaque in new addition

Naming Rights: \$50,000+: Naming rights available for:

- New Classroom #1

- New Classroom #2
- New Meeting Room

Our Strong Foundation

Queen of the Apostles has a proven track record of successful fundraising and generous community support. We already have \$150,000 available from previous campaigns, demonstrating our community's commitment to this project. Any funds raised beyond our \$1.25 million goal will support future building maintenance, including necessary brick repair work.

Leadership

This expansion is championed by our Pastor and Parish Council, with oversight from a dedicated Campaign Committee committed to responsible stewardship of every donated dollar.

Ready to Build Our Future Together?

For info and updates visit: *QueenOfTheApostlesTomah.com/Expansion*

Questions? email: *Expansion@QueenOfTheApostlesTomah.com*

Frequently Asked Questions

Q: Why is this expansion needed now?

A: Our school has successfully grown to serve 200 students through 8th grade, but we've outgrown our physical space. Meanwhile, our parish ministries deserve better than makeshift meeting spaces. This expansion addresses both critical needs simultaneously.

Q: How will this benefit the broader community?

A: The expansion creates separate access to parish facilities, making them more accessible for counseling, spiritual formation, community meetings, and outreach programs without disrupting school operations or compromising school security.

Q: What's the total cost and how much has been raised?

A: The project costs \$1.25 million. We have \$150,000 from previous fundraising efforts and are seeking community support for the remaining amount.

Q: When will construction begin and end?

A: We plan to break ground in spring 2026 (after thaw) and complete the project in fall 2026

Q: Will construction disrupt school or parish activities?

A: Our goal is to complete the entire addition at once to minimize disruption. We'll work closely with contractors to ensure school and parish activities continue smoothly.

Q: How do I know my donation will be used properly?

A: Queen of the Apostles has a strong track record of successful fundraising and responsible stewardship. Our Pastor, Parish Council, and Campaign Committee provide oversight to ensure every dollar is used effectively.

Q: Are there tax benefits to donating?

A: Yes, Queen of the Apostles is a qualified 501(c)(3) organization. Please consult your tax advisor about the deductibility of your contribution.

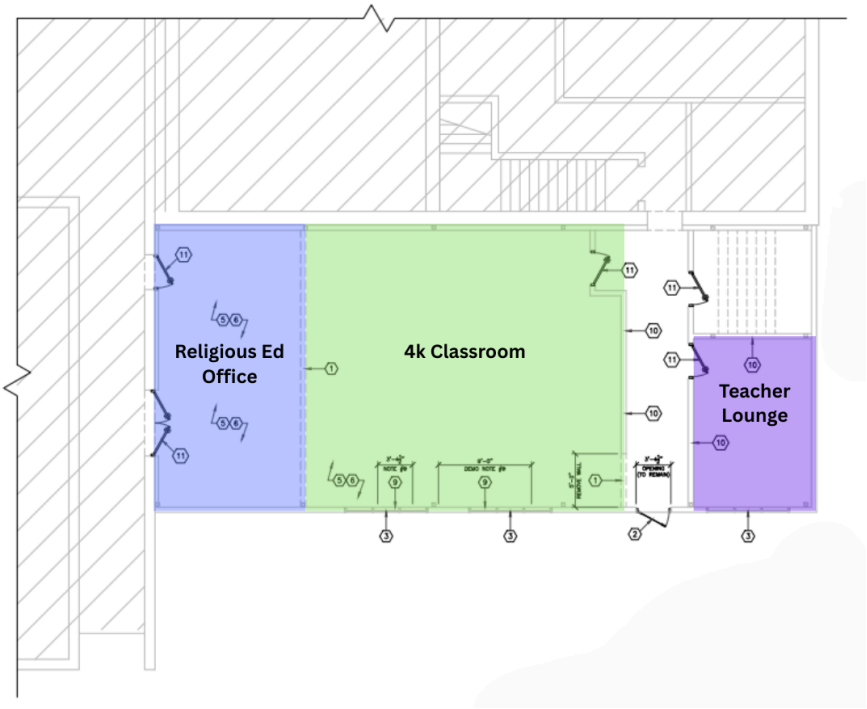
Q: Can I make a pledge over multiple years?

A: Yes, we welcome multi-year pledges to help make larger gifts more manageable.

Q: How can I see the architectural plans?

A: We're happy to share our architectural plans. Please contact the parish office to arrange a viewing.

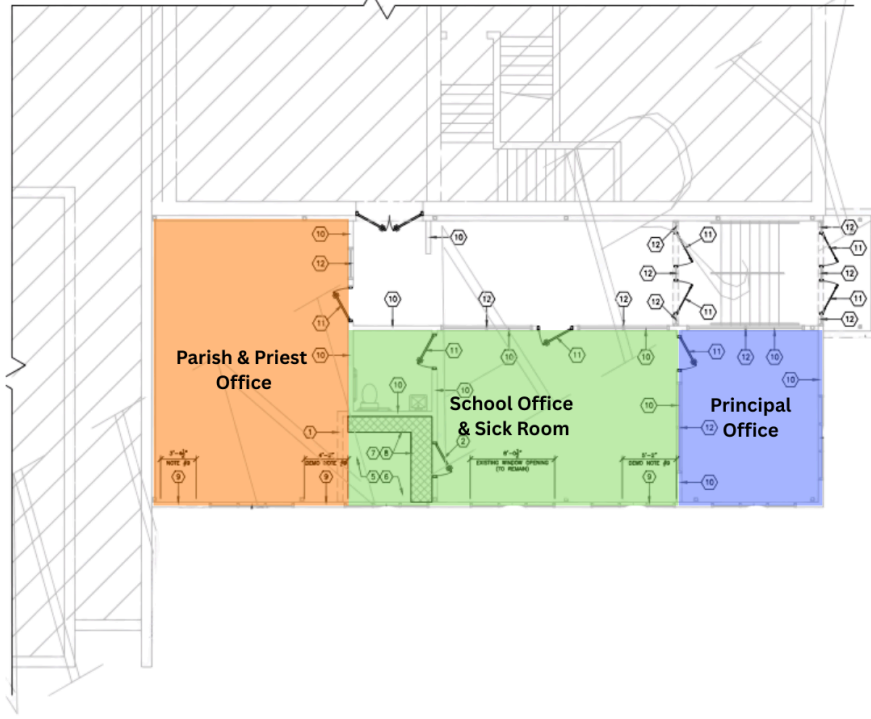
Current Layout



New Layout



Current Layout



New Layout

