

forge

BY  KALORA





forge

BY  KALORA

WOOD STORAGE

FIRETOOLS

SAFETY GUARDS & HEARTHS

ACCESSORIES & MAINTENANCE

INSULATED FLUE

FLUE KITS & PARTS

PARTS & CONSUMABLES

HOT AIR DILUTION &
DISTRIBUTION KIT

WOOD STORAGE



HINTERLAND

Features:

- Comes with 4 piece stainless steel fire tool set
- Easy to assemble
- Quality black powder-coated steel construction

Product
dimensions (mm):

495w x 250d x 710h

SKU: FFT28BS



GEOFLEX

Features:

- Easy to assemble
- Quality black powder-coated steel construction

Product dimensions (mm):
6880w x 250d x 560h

SKU: FLS008



ZERO 1000

Features:

- Easy to assemble
- Quality black powder-coated steel construction

Product dimensions (mm):
1000mm Diameter

SKU: FLS005



URBAN STEEL XL 1500

Features:

- Easy to assemble
- Quality black powder-coated steel construction

Product dimensions (mm):
550w x 255d x 1500h

SKU: FLS015

WOOD STORAGE



HEXAGON 500

Features:

- Easy to assemble
- Quality black powder-coated steel construction

Product
dimensions (mm):

575w x 400d x 490h

SKU: FLS002



HEXAGONAL 850 *Corten*

Features:

- Beautiful corten steel construction
- Weather sturdy
- Easy to assemble

Product
dimensions (mm):

850w x 700d

SKU: FLS001



ZERO 1000 *Corten*

Features:

- Beautiful corten steel construction
- Weather sturdy
- Removable base
- Easy to assemble

Product
dimensions (mm):
1000mm Diameter

SKU: FLS006

FIRETOOLS



VALYRIAN

Features:

- Easy to assemble
- 4 piece set with stand
- Quality zinc plated construction

SKU: FFT85S



HERITAGE

Features:

- Easy to assemble
- 4 piece set with stand
- Quality black powder-coated steel construction

SKU: FFT175B



MAHOGANY

Features:

- Easy to assemble
- 4 piece set with stand
- Quality black powder-coated steel and wood construction

SKU: FFT104B

FIRETOOLS



IRON GREY

Features:

- Easy to assemble
- 4 piece set with stand

Quality steel construction

SKU: FFT69BE



ELLIPSE

Features:

- Easy to assemble
- 4 piece set with stand
- Quality steel construction with glass base

SKU: FFT173S



HINTERLAND

Features:

- Easy to assemble
- 4 piece set with wood storage
- Quality steel construction

Product dimensions (mm):

495w x 250d x 710h

SKU: FFT28BS

STRAIGHT SAFETY GUARDS

Features:

- Easy to assemble
- Quality black powder-coated steel construction

SMALL

Product dimensions (mm):

1080w x 1055d x 800h

SKU: FCCG001B



LARGE

Product dimensions (mm):

1275w x 1275d x 800h

SKU: FCCG003B



CORNER SAFETY GUARDS

Features:

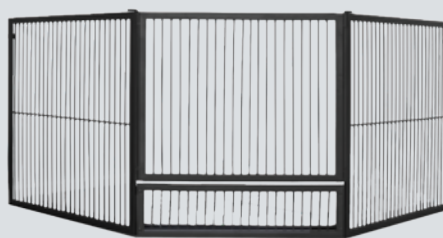
- Easy to assemble
- Quality black powder-coated steel construction

SMALL

Product dimensions (mm):

1890w x 650d x 800h

SKU: FCG001BC

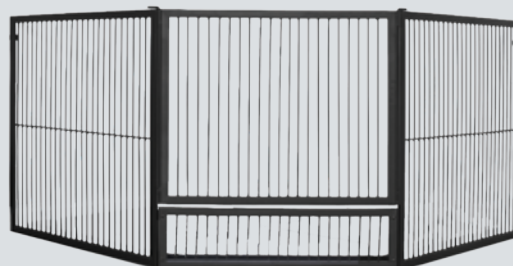


LARGE

Product dimensions (mm):

2050w x 720d x 800h

SKU: FCG03BC



STRAIGHT HEARTH

Features:

- Matt black tile
- Quality construction



SMALL

Product dimensions
(mm):
1050w x 1050d
SKU: FHPT105



MEDIUM

Product dimensions
(mm):
1050w x 1200d
SKU: FHPT105120



LARGE

Product dimensions
(mm):
1200w x 1200d
SKU: FHPT120

CORNER HEARTH

Features:

- Matt black tile
- Quality construction



MEDIUM

Product dimensions
(mm):
1250w x 1250d
SKU: FHPT125C



LARGE

Product dimensions
(mm):
1425w x 1425d
SKU: FHPT1425C

IN-BUILT HEARTH PAD

Features:

- Matt black tile
- Quality construction



ONE-SIZE

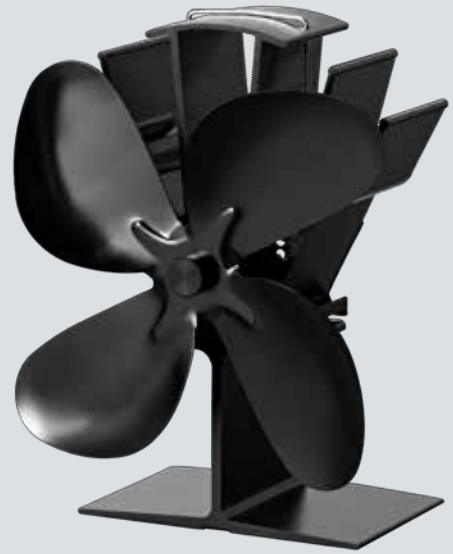
Product dimensions
(mm):
1050w x 550d
SKU: SG040100015

EXO FAN

Features:

- For use on radiant wood heaters and stoves
- Gentle heat distribution
- Powdered by heat
- Quality anodised aluminium construction

SKU: SG010400037

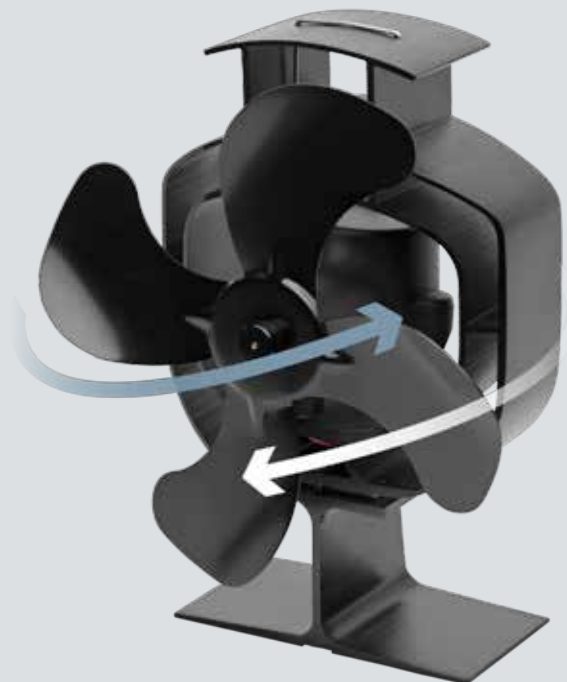


EXO FAN SWING

Features:

- For use on radiant wood heaters and stoves
- Whisper quiet 45° oscillating fan
- Gentle heat distribution
- Powdered by heat
- Quality anodised aluminium construction

SKU: SG050600021





EASY SOOT REMOVER

Features:

- Easy to use
- Cleans creosote build up from your flue
- 3 pack

SKU: SG050100002



DRY GLASS CLEANER

Features:

- Easy to use on your fireplace glass
- Cleans creosote and soot stains
- No liquid or cleaning agent needed

SKU: SG010400043



HEAVY DUTY GLOVES

Features:

- Flame resistant
- Cotton lining
- One size fits all long gloves

SKU: SG050600009



MOISTURE METER

Features:

- Easily test the moisture level of your wood and building materials
- Batteries included

SKU: SG050600020



6" PULL THRU FLUE BRUSH

Features:

- Easy to use

SKU: FFB304



6" FLUE BRUSH KIT

Features:

- 5m extension
- Easy to assemble

SKU: FFB301



GASKET ADHESIVE & SEALANT

Features:

- High temp rated
- Easy to use

SKU: SG031000118



METALLIC BLACK SENOTHERM PAINT

Features:

- High temp spray enamel
- Suitable for wood heaters, flues & BBQs
- Easy touch up application

SKU: SG050500001

INSULATED FLUE



INSULATED FLUE KIT

Features:

- Galvanised steel with black powder coated finish
- Up to 90% quieter than traditional flue
- Twist lock connection system
- Fully insulated with hi-temp ceramic insulation
- Increases your wood heaters efficiency
- Reduced clearances to combustibles

Kit includes:

- x4 Insulated 1m Flue Lengths (SG020200069)
- x1 Spigot Adapter (SG020200062)
- x1 Chimney Cowl (SG020200070)
- x1 Ceiling ring (SG020200072)
- x5 Locking Bands

KIT SKU: SG020100018



An insulated flue kit, also known as a room sealed flue kit, is a high performing flue which is perfect for energy efficient and passive homes. Insulated flues have many benefits such as:

Improved Efficiency: Insulated flue kits help retain heat within the flue, increasing the efficiency of your wood heater. Warming your home more effectively, saving you fuel and money.

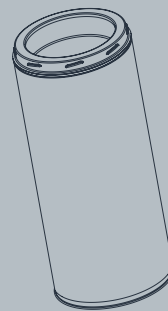
Longer Burn Time: With better heat retention, your heater can maintain its burn for longer, providing a more consistent and prolonged heat output.

Noise Reduction: Insulated flue kits are significantly quieter, reducing noise by up to 90% compared to traditional flue systems.

Safety: The insulation helps prevent the outer surface of the flue from becoming too hot, reducing the risk of accidental burns.

Quicker Installation: The twist lock installation is easier to install and creates a tight fit.

Reduced Emissions: By maintaining a higher temperature within the flue, insulated kits help reduce the amount of creosote buildup and emissions, making your heating system more environmentally friendly; promoting a cleaner burn.



INSULATED FLUE TWIST LOCK LENGTHS

Features:

- Black fully insulated flue section
- Twist lock connections
- Stainless steel construction
- Suitable for internal & external installation

Sizes available:

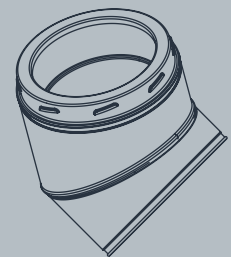
1000mm
SKU: SG020200069

500mm
SKU: SG020200084

300mm
SKU: SG020200083

120mm
SKU: SG020200082

350mm - 600mm
Adjustable
SKU: SG020200078



INSULATED FLUE ADDITIONAL PARTS

Features:

- Black insulated flue parts
- Stainless steel construction
- Suitable for internal & external installation

Parts available:

Chimney cowl
SKU: SG020200070

Spigot adaptor
SKU: SG020200062

Ceiling ring
SKU: SG020200072

Locking band
SKU: SG020200073

45 Degree elbow
SKU: SG020200071

45 Degree tee with
inspection cap
SKU: SG020200087

90 Degree elbow
SKU: SG020200062

90 Degree tee with
inspection cap
SKU: SG020200075

Base support & brackets
SKU: SG020200088

In-roof support brace
SKU: SG020200081

Extended roof support
SKU: SG020200102

Decorative sliding plate
SKU: SG020200089

FLUE KITS & PARTS



DEFAULT BLACK MESH FLUE KIT

Includes:

- x2 internal flue extensions
- x1 external flue extension
- x1 ceiling collar
- x1 drop box
- x1 anti-downdraft cowl & cone

SKU: FFK64M2



DEFAULT MATTE BLACK FLUE KIT

Includes:

- x2 internal flue extensions
- x1 external flue extension
- x1 ceiling collar
- x1 drop box
- x1 anti-downdraft cowl & cone

SKU: SG010400034



INBUILT FLUE KIT

Includes:

- x2 internal flue extensions
- x1 external flue extension
- x1 ceiling collar
- x1 drop box
- x1 anti-downdraft cowl and cone

SKU: SCFK64MINB



ZERO CLEARANCE FLUE KIT

Includes:

- x4 external flue extensions
- x1 anti-downdraft cowl and cone

SKU: SCFKZCB06



6" STAINLESS STEEL FLUE

Features:

- 1 metre length

SKU: FF012



8" BLACK MESH 1M LENGTH

Features:

- Black mesh 1m length with tabs & heat shield

SKU: FF015



1M INTERNAL EXTENSION

Available in:

- Internal black mesh (SKU: FF901)
- Internal matte black (SKU: SG010400035)



1M EXTERNAL EXTENSION

Features:

- External triple skin extension kit

SKU: FF902



45° EXTERNAL BEND KIT

Features:

- External triple skin

SKU: SG010400031



6" 45° BEND

Features:

- Stainless steel

SKU: SG010400030



PENETRATION BOX

Features:

- Painted 1m

SKU: SCF0712



10" GALVANISED CASING

Features:

- Galvanised Casing

SKU: FF015



CEILING COLLAR 10"

Features:

- 10" Round
- Matte black

SKU: SCF094



ADJUSTABLE CEILING/WALL PLATE

Features:

- Matte black

SKU: SCF087



TIN ROOF FLASHING

Features:

- 171mm-381mm

SKU: FF036



TILE ROOF FLASHING

Features:

- 10"

SKU: FF037



FIRE BRICKS

Features:

- Heat reflective vermiculite firebrick sets
- Suitable for use in combustion wood-burning fireplaces and solid fuel stoves

Available sizes:

FB19 Firebricks (5 qty)
Size: 270x185x25
SKU: SG030600031

FB42 Firebricks (5 qty)
Size: 230x115x38
SKU: SG030600030

FB21 Firebricks (5 qty)
Size: 285x175x25
SKU: SG030600028

FB41 Firebricks (10 qty)
Size: 230x115x25
SKU: SG030600029

FB16 Firebricks (10 qty)
Size: 255x160x25
SKU: SG030600027

FB15 Firebricks (10 qty)
Size: 250x145x25
SKU: SG030600026

FB09 Firebricks (10 qty)
Size: 200x145x25
SKU: SG030600025

FB22 Firebricks (10 qty)
Size: 220x170x25
SKU: FB22

FB64 Firebricks (10 qty)
Size: 200x156x25
SKU: FB64

FB06 Firebricks (10 qty)
Size: 190x178x25
SKU: FB06



ROPE SEAL

Features:

- Suitable for wood heaters and stoves
- High temp resistant

Available sizes:

Size: 6mm
Length: 2 meters
SKU: SG030300001

Size: 9mm
Length: 2 meters
SKU: SG030300002

Size: 12mm
Length: 2 meters
SKU: SG030300003

Size: 15mm
Length: 2 meters
SKU: SG030300008

Size: 15x10mm
Length: 2 meters
SKU: SG030300004

Size: 18mm
Length: 2 meters
SKU: SG030300000

Size: 20mm
Length: 2 meters
SKU: SG030300006

Size: 25mm
Length: 2 meters
SKU: SG030300007



GLASS SEAL

Features:

- Suitable for wood heaters and stoves
- High temp resistant

Available sizes:

Size: 20mm
Length: 2 meters
SKU: SG030400002

Size: 25mm
Length: 2 meters
SKU: SG030400001



HOT WATER JACKET

Features:

- Suits Kalora Fusion wood heater

SKU: SCX520



6" ANTI-DOWNDRAFT COWL & CONE

Features:

- Stainless steel

SKU: FF022



FLEXI FLUE 6" ADAPTOR

Features:

- Stainless steel

SKU: SCF0172



FLEXI FLUE 6"

Features:

- Sold by the meter (max. 5 meters)

SKU: SCF0171



BLACK MESH BEND KIT

Available in:

- Internal 45° left hand (SKU: SCF904)
- Internal 45° right hand (SKU: SCF905)



BLACK MESH BEND KIT CON'T

Available in:

- Internal 45° front (SKU: SCF906)
- Internal 45° rear (SKU: SG010400028)



MATTE BLACK BEND KIT

Available in:

- Internal 45° left hand (SKU: SCF909)
- Internal 45° right hand (SKU: SCF910)



MATTE BLACK BEND KIT CON'T

Available in:

- Internal 45° front (SKU: SCF911)
- Internal 45° rear (SKU: SG010400029)



DIRECT VENT GAS FLUE

Available sizes:

- 275mm-370mm (SKU: DV911)
- 900mm (SKU: DV903)



DIRECT VENT GAS 90° ELBOW

Features:

- Galvanised

SKU: DV990G



DIRECT VENT GAS TERMINATION

Features:

- Horizontal termination

SKU: DV984



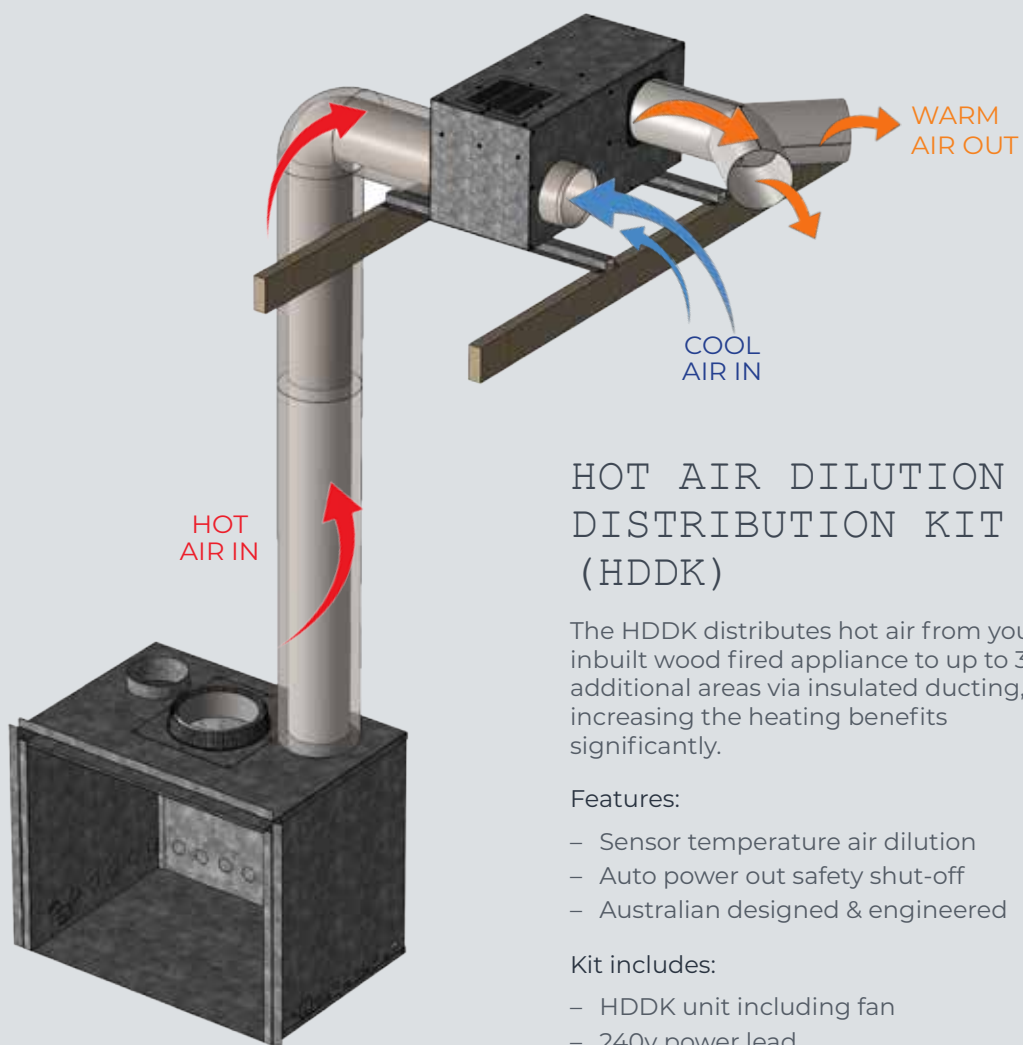
DIRECT VENT GAS TERMINATION

Features:

- High wind vertical termination

SKU: DV991

HOT AIR DILUTION & DISTRIBUTION KIT



HOT AIR DILUTION & DISTRIBUTION KIT (HDDK)

The HDDK distributes hot air from your inbuilt wood fired appliance to up to 3 additional areas via insulated ducting, increasing the heating benefits significantly.

Features:

- Sensor temperature air dilution
- Auto power out safety shut-off
- Australian designed & engineered

Kit includes:

- HDDK unit including fan
- 240v power lead
- 2x mounting brackets & screws
- *kit does not include flue or ducting*

SKU: SG060300001

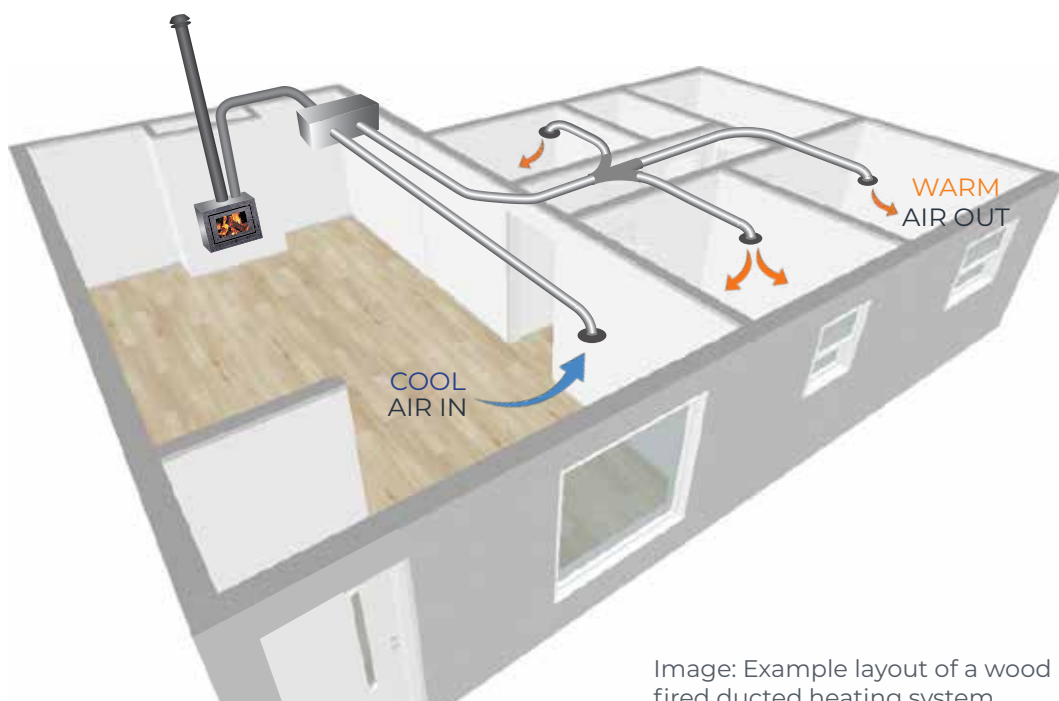


Image: Example layout of a wood fired ducted heating system



Distributed by:

kalora.com.au/forge