

Since 2008

 Fireplaces WA



LOOKBOOK FOR PROFESSIONALS


decoflame

Experience Danish excellence with a DecoFlame Fireplace.
Unparalleled quality and craftsmanship - your dream, our flame.







01



02

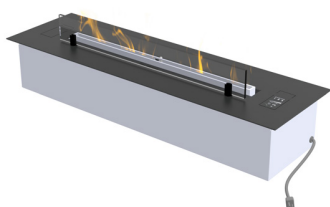




BURNER TYPES

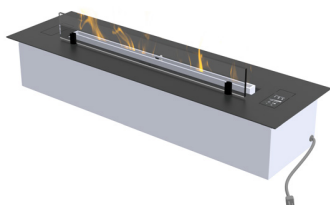


Burner



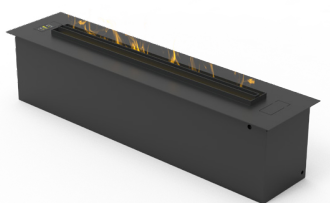
Denver F3

Lenght:
From 720 to 1120mm



Denver F6

Lenght:
From 620 to 3920mm



Hybrid Mist

Lenght:
From 720 to 1120mm

[Datasheet](#)[PD](#)[AutoCad](#)[Datasheet](#)[PD](#)[AutoCad](#)[Datasheet](#)[PD](#)[AutoCad](#)

Refilling Denver F3 and Denver F6



The pump and hose, inserted into the bioethanol, are positioned by the burner.



Connect the hose to the burner by inserting the studs.



Connect the cable to the burner.



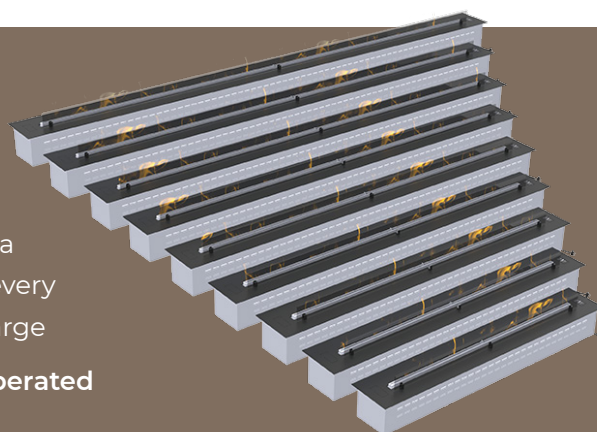
Afterwards, start the pump, and the tank will automatically fill up.

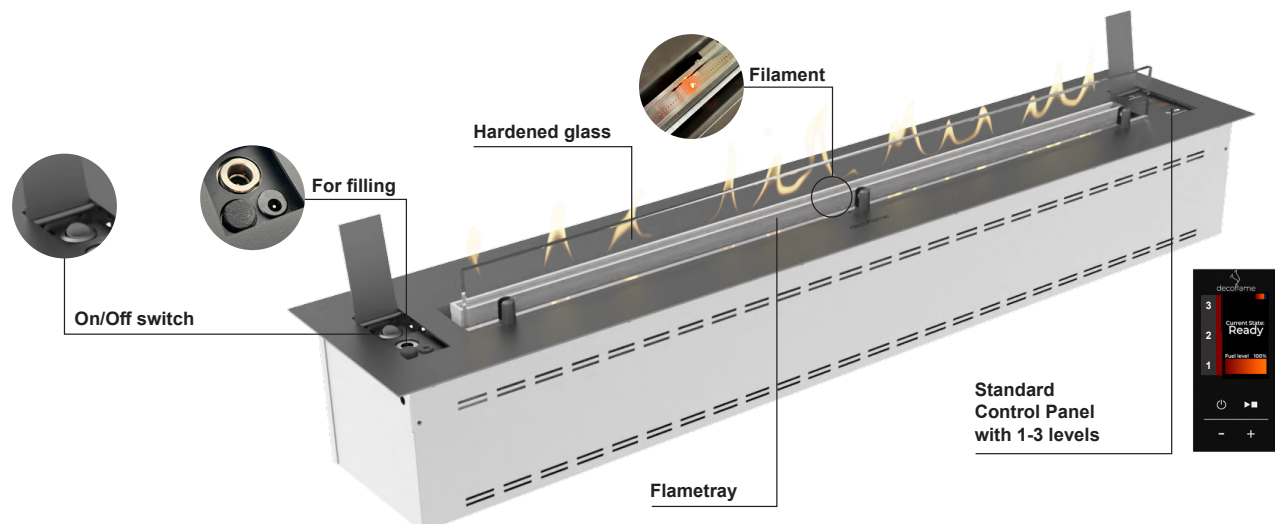
<p>Burner types:</p>  <p>Danish Design</p>	 	 	 
 <p>Burner</p>	<p>Denver F3 (3 step burner) Electronical bioethanol burner</p>	<p>Denver F6 (6 step burner) Electronical bioethanol burner</p>	<p>Hybrid Mist (6 step mist) Electronical fireplace</p>
 <p>Easy installation</p>	<p>X</p>	<p>X</p>	<p>X</p>
 <p>Flame regulation</p>	<p>X</p>	<p>X</p>	<p>X</p>
 <p>Can be custom-made</p>	<p>X</p>	<p>X</p>	<p>X</p>
 <p>Bioethanol fuel</p>	<p>X</p>	<p>X</p>	
 <p>No chimney</p>	<p>X</p>	<p>X</p>	<p>X</p>
 <p>No smoke and ash</p>	<p>X</p>	<p>X</p>	<p>X</p>
 <p>Option for other colour (RAL)</p>	<p>X</p>	<p>X</p>	<p>X</p>
 <p>Plugin (electrical)</p>	<p>X</p>	<p>X</p>	<p>X</p>
 <p>Closed system</p>	<p>X</p>	<p>X</p>	<p>X</p>
 <p>APP operation</p>		<p>X</p>	<p>X</p>
<p>ECO 1, 2, 3, 4, 5</p> <p>Option for EcoWave solution</p>		<p>X</p>	
 <p>Option for SmartHome Connection</p>		<p>X</p>	
 <p>6 steps for regulation</p>		<p>X</p>	<p>X</p>
 <p>Only use of Demineralised water</p>			<p>X</p>
 <p>Option for automatic water connection</p>			<p>X</p>
 <p>KwH, depending on size/model of the burner</p>	<p>Between 1,6 - 5,9 KwH*</p>	<p>Between 2,4 - 6,1 KwH*</p>	

F6 customised size up to 3920mm

Discover the versatility of Decoflames Denver F6 bioburner, ranging from 620mm to 3920mm in length. Crafted in our workshop, these burners offer unparalleled flexibility for projects of any scale. Whether it is a cosy look or a grand installation, our range ensures there is an ideal fit for every space. Now also available with a black flametray at extra charge

Discover how effortlessly Decoflame's fireplaces can be operated using the QR code provided on the following page.





Remote control included

With Decoflame's remote control, operating the electronic fireplace is simplified - it's intuitive for a great user experience.



Fuel Pump included

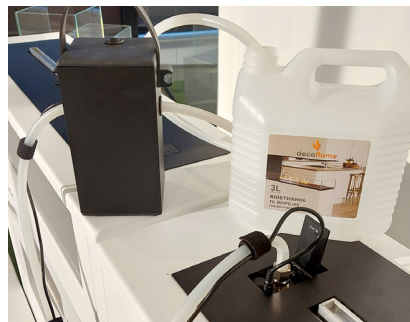
Decoflame's automatic pump ensures easy and safe refilling of bioethanol, enhancing convenience and safety.



Size in mm	Topplate: L: 620mm D: 215mm	Topplate: L: 720mm D: 215mm	Topplate: L: 920mm D: 215mm	Topplate: L: 1120mm D: 215mm
	Bottom box: L: 600mm H: 160mm incl. topplate D: 190mm	Bottom box: L: 700mm H: 160mm incl. topplate D: 190mm	Bottom box: L: 900mm H: 160mm incl. topplate D: 190mm	Bottom box: L: 1100mm H: 160mm incl. topplate D: 190mm
Flame tray size, mm	400	500	700	900
Capacity, liters	3.8L	4L	5.8L	7.2L
Fuel consumption, l/h	0.2 - 0.5	0.3 - 0.6	0.4 - 0.8	0.6 - 1.0
Burning time at max flame	8h	7h	7.5h	7.3h
Nominal output, kWh	2.6	3.2	4.3	5.7
Net weight, kg	17.5	19.5	22	26
Min. room size, m ³	51	64	89	115

GENEREL INFORMATION

Produced in	Denmark
Flame levels	3 flamelevels
Sensors	Temperature/Fuel Level/Spillage
Powersupply	230 V
Fuel Type	Bioethanol 95 - 96.5 %
Flue	Not required
No internal pump	No noise, reduced maintenance, increased reliability
Finish	Black powder-coating
Finish top-plate	2mm black powder-coated steel
Glass	Tempered glass, T6mm H70mm The glass is placed in customised glassholders
Application	Indoor use only



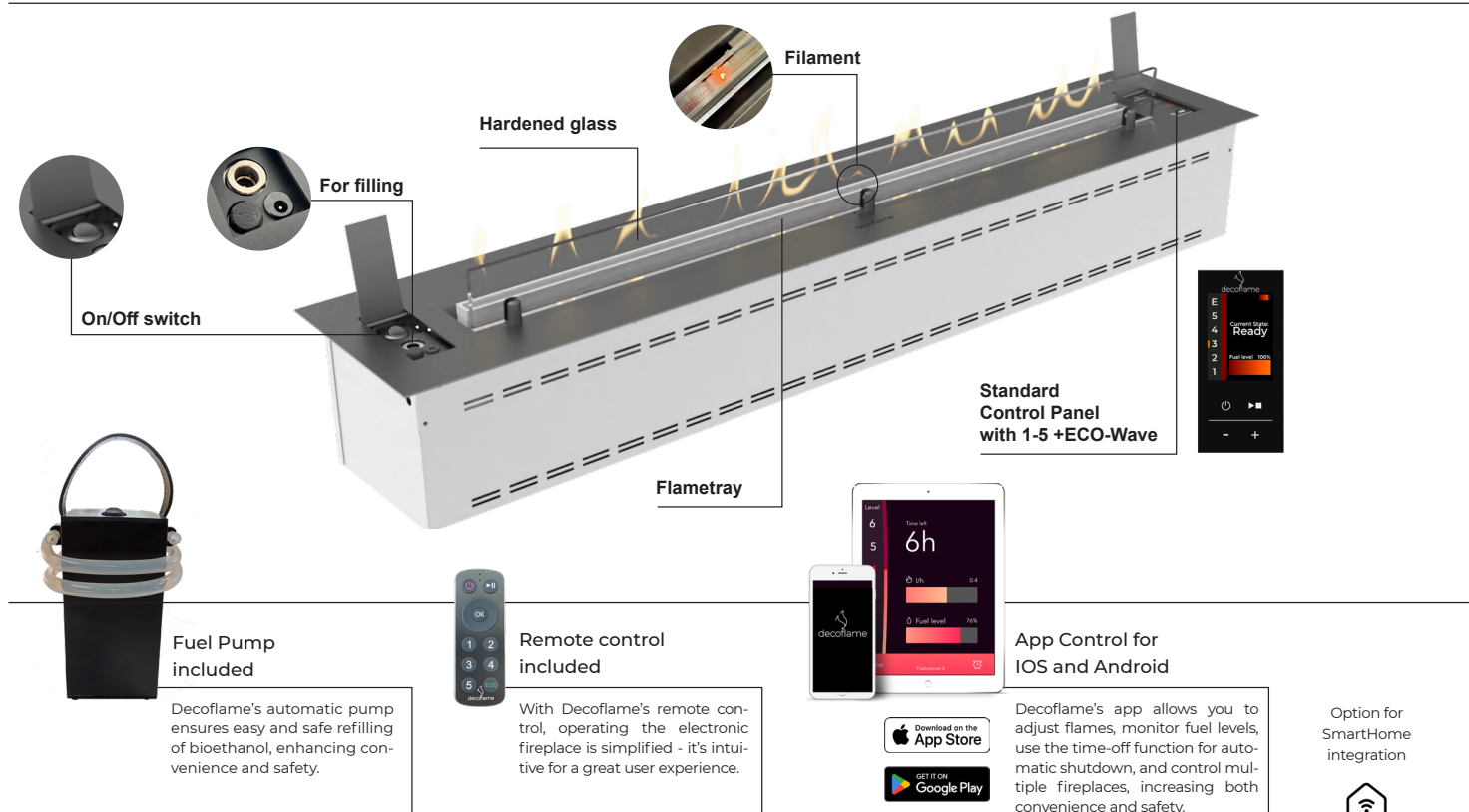
BIOETHANOL

For use and information about bioethanol, please visit: decoflame.com.

Please be aware that bioethanol is essential to a proper use and guarantee of your product.

Subject to typing errors, typos and technical faults, production- and product tolerances.

Decoflame ApS reserves the right to make changes without notice. We refer to Decoflame's Ordinary Terms and Conditions.



MODEL	F6 620	F6 720	F6 920	F6 1120	F6 1320	F6 1520	F6 1720	F6 1920	F6 2120
Size in mm	Topplate: L: 620mm D: 215mm Bottom box: L: 600mm H: 160mm incl. topplate D: 190mm	Topplate: L: 720mm D: 215mm Bottom box: L: 700mm H: 160mm incl. topplate D: 190mm	Topplate: L: 920mm D: 215mm Bottom box: L: 900mm H: 160mm incl. topplate D: 190mm	Topplate: L: 1120mm D: 215mm Bottom box: L: 1100mm H: 160mm incl. topplate D: 190mm	Topplate: L: 1320mm D: 215mm Bottom box: L: 1300mm H: 160mm incl. topplate D: 190mm	Topplate: L: 1520mm D: 215mm Bottom box: L: 1500mm H: 160mm incl. topplate D: 190mm	Topplate: L: 1720mm D: 215mm Bottom box: L: 1700mm H: 160mm incl. topplate D: 190mm	Topplate: L: 1920mm D: 215mm Bottom box: L: 1900mm H: 160mm incl. topplate D: 190mm	Topplate: L: 2120mm D: 215mm Bottom box: L: 2100mm H: 160mm incl. topplate D: 190mm
Flame tray size, mm	400	500	700	900	1100	1300	1500	1700	1900
Capacity, liters	3.8L	4L	5.8L	7.2L	8.4L	9.7L	11.1L	12.4L	13.7L
Burning time at max flame	8.0h	7.0h	7.5h	7.3h	7.0h	6.5h	6.5h	6.5h	6.5h
Nominal output, kWh	2.6	3.2	4.3	5.7	7.0	8.3	9.6	10.8	12.1
Net weight, kg	13	15	19	21	23	25	27	29	31
Min. room size, m ³	51	64	89	115	140	166	191	217	243

GENEREL INFORMATION

Produced in	Denmark
Flame levels	5 flamelevels + ECO Wave
Sensors	Temperature/Fuel Level/Spillage
Powersupply	230 V
Fuel Type	Bioethanol 95 - 96.5 %
Flue	Not required
No internal pump	No noise, reduced maintenance, increased reliability
Finish	Black powder-coating
Finish top-plate	2mm black powder-coated steel
Glass	Tempered glass, T6mm H70mm The glass is placed in customised glassholders
Application	Indoor use only



BIOETHANOL

For use and information about bioethanol, please visit: decoflame.com.

Please be aware that bioethanol is essential to a proper use and guarantee of your product.

Subject to typing errors, typos and technical faults, production- and product tolerances.

Decoflame ApS reserves the right to make changes without notice. We refer to Decoflame's Ordinary Terms and Conditions.



	720mm	920mm	1120mm
Size	720x215x215	920x215x215	1120x215x215
Flametray size	500mm	700mm	900mm
Capacity	6L	8L	10L
Fuel consumption	125 ml/h	150 ml/h	175 ml/h
Burning time	> 48 h	> 53 h	> 57 h
Net weight	14,5 kg	18,5 kg	23,5 kg

Power supply: 220V - 240V, 50 Hz

GENEREL INFORMATIO

Produced in	Denmark
Flame levels	6 flamelevels
Sensors	Water Level Indicator/Mist Level Indicator/ Spillage
Powersupply	230 V
Fuel Type	USE ONLY demineralised water
Flue	Not required
No internal pump	No noise, reduced maintenance, increased reliability
Finish	Black powder-coating
Finish top-plate	2mm black powder-coated steel
Glass	Tempered glass, T6mm H70mm The glass is placed in customised glassholders
Application	Indoor use only

The Hybrid Mist Fireplace utilises advanced technology to atomise water vapour, creating a fine mist that can be electronically controlled. This mist is complemented by integrated LED lights in various colours, producing the illusion of real flames.

This burner can be implemented in various fireplace solutions; see the next page for details.

Forhouseholdswithsmallchildrenorpets,whereanopen fire might be a concern, this fireplace offers an excellent alternative.

The Hybrid Mist Fireplace is available in three standard sizes.

DEMINERALISED WATER

For use and information, please visit: decoflame.com.

Please be aware that it is essential to use demineralised water for proper use and gurantee of your

Subject to typing errors, typos and technical faults, production- and product tolerances.

DecoFlame ApS reserves the right to make changes without notice. We refer to DecoFlame's Ordinary Terms and Conditions.