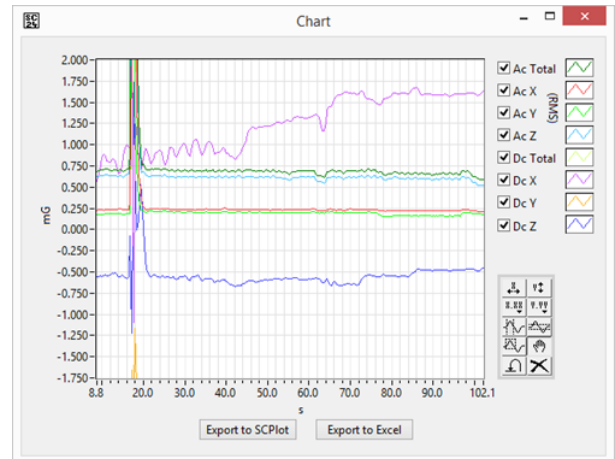
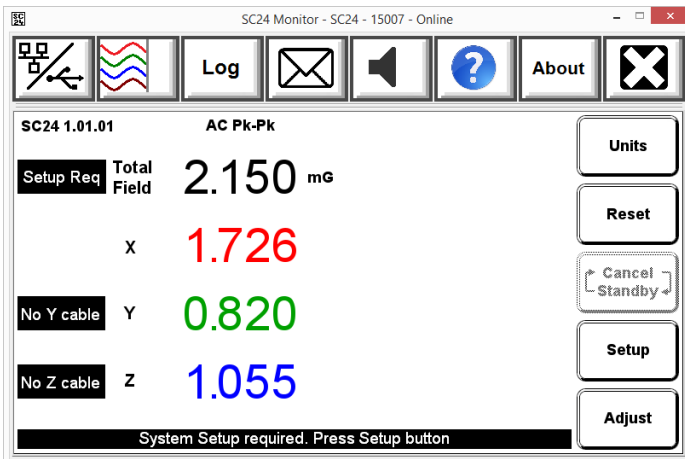


SC24/26 Monitor Software



- Remotely view and control an SC24/ SC26 front panel touchscreen display.
- Display a chart of the SC24/SC26 magnetic field readings.
- Log the magnetic field readings to a text file for subsequent viewing in SCPlot or a spreadsheet.
- Send email alerts under the following conditions:
 - SC24/26 off line
 - Field not Ok
 - X Y or Z field trip
 - SC24/26 screen displays a message
- Includes a USB cable to connect the SC24/SC26 Control unit to a PC running Microsoft Windows® XP/Vista/7/8/8.1.
- Connect via Ethernet cable for access via LAN or Internet.
- Includes SCPlot for the display and formatting of results.

Overview

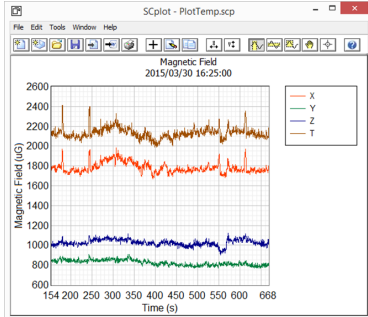
The SC24 and SC26 are Magnetic Field Cancelling Systems that stabilise the X, Y and Z ambient fields and restore the resolution and accuracy of electron beam microscopes and other tools. They display the field from their precision AC and DC magnetic field sensors on their front panel touchscreen display. They also indicate whether the system is set up, whether the field is OK, or whether a field component tripped above a pre-set level.

The Monitor SC24/26 is a program for Microsoft Windows® PCs that can remotely monitor and control the state of an SC24 or SC26 systems via a USB cable. It is also possible to connect using the systems' Ethernet port and use this program over a LAN or the Internet.

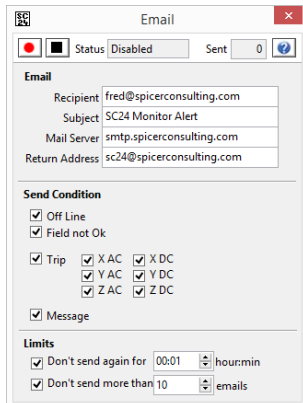
The software shows the touch screen as it appears on the system and allows you to operate the touchscreen remotely. It can also chart the system's meter readings, log the readings to a text file and send email alerts when the system indicates certain conditions.

Features

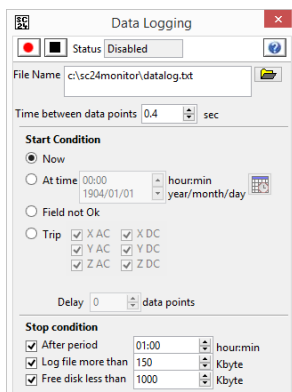
- The SC24/26 Chart window shows a chart of the front panel meter readings. Individual traces may be turned on or off. The chart may be auto-scaled, zoomed or cleared. The chart recordings can be exported to SCPlot for further analysis.



- The Monitor SC24/26 can be set up to send emails when the SC24/26 goes off line, when the field is not Ok, the field on any axis exceeds the trip level, or when the SC24/26 generates an on-screen message. This is helpful for ensuring that any disruption to the optimal performance of the cancelling system is quickly rectified.



- The Monitor SC24/26 can log the SC24/26 readings and status to a text file, which can be viewed in SCPlot. The SCPlot program is included. The text file may also be opened in a spreadsheet.



- Using this software with a windows tablet enables easy installation and optimisation of cancelling systems.



Purchase Options

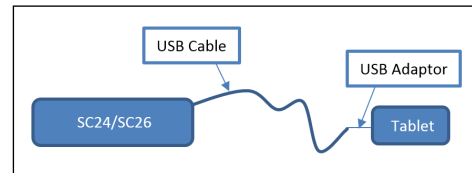
We offer a number of add-on options with this software. These options have been crafted to give ultimate ease of use when setting up an SC24 or SC26 cancelling system.

Monitor Software

- Monitor Software CD and User Manual
- 5m USB Cable

Tablet Add-on

- 7" Windows 8.1 Tablet with preinstalled software
- USB tablet adaptor cable
(Requires monitor software)



Netgear-Trek Add-on

- Pre-setup Netgear Trek mini router
(Works with either tablet or personal laptop)

