




This walk offers an exciting circuit of Pontarddulais for all Ramble & Scramble fans! Our dragons take you through Coed Bach park, and then out onto the wetlands with wildlife to spot and historic buildings to explore!

Distance: 2.9 miles  
Difficulty: Leisurely  
Time: 2 hours

-  The section from the station to Coed Bach Park is accessible to wheelchairs and buggies.
-  There are places to buy food & drink on the main high street.
-  There are public toilets in the village.

1 Walk through the car park to meet the main road. Turn left here. Take care walking along the road and cross carefully by the Working Mens Club.

2 Follow the road in front of you, passing lots of lovely coffee shops and places to eat. Keep going until you reach Trinity Place on your right, looking out for the blue sign for Coed Bach Park.

3 Follow the blue signs as they direct you into the park where your adventure begins! As you enter the park, follow the path on the right which leads you around the football field. At the far side follow the signed footpath (the sign has a picture of a person walking on it).

4 Follow this path until you reach a kissing gate. Walk across the field ahead of you to reach another kissing gate which leads you out onto the wetlands.

### Activity 2 - The old church

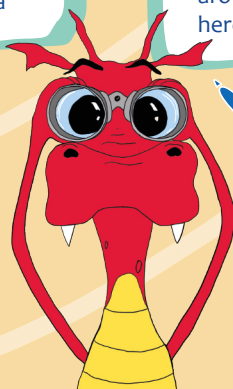
Can you see where the old church used to stand? Draw a picture of what you think the church used to look like!



5 Take the path over the bridge (make sure you have sensible shoes on as it gets a bit wet here!) As you walk through the wetlands look out at all of the wildlife around you, especially the birds that live here! It's time for the first activity!

### Activity 1 - Bird spotting

Keep very quiet, look around you and listen carefully. Ask a grown up to time 5 minutes. How many different birds can you spot?



# Start: Pontarddulais Train Station

Look out for our Ramble & Scramble poster at the train station to make sure you're in the right place!

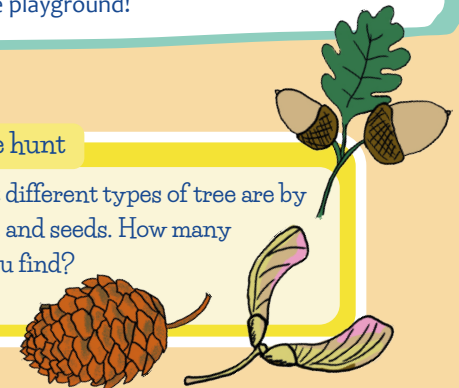
6 Follow the waymarks towards a farm that you will see ahead of you. As you get close to the farm you should be able to see the old Llandeilo Tal-y-Bont Church yard. This is where you can do activity 2!

7 When you've done your drawing and maybe even had a picnic, it's time to retrace your steps back across the wetlands to Coed Bach Park.

8 When you arrive back at the football field. Turn right towards the woodland area for another activity and to play in the playground!

### Activity 3 - The tree hunt

You can find out what different types of tree are by looking at their leaves and seeds. How many different trees can you find?



9 After having fun here, continue out of the park and follow Gwynfryn Road through a small lane to reach the main road. Go left here to eventually reach all the cafes and shops that you passed earlier, where you can have another snack! You can then retrace your steps back to the train station for your journey home!