

Start: Llanelli Train Station

This is an exciting walk out to the coast to explore the beach near Llanelli. Follow Ramble & Scramble as they take you to the seaside, looking for wildlife on your way!

Distance: 1.9 miles
Difficulty: Leisurely
Time: 1.5 hours



All except the beach section is accessible to wheelchairs and buggies.



There are places to buy food & drink along the coastal section of this walk.



There are public toilets at the train station.

1

Exit the train station via the main ticket office and then walk to your left and then left again to safely cross the train tracks.



You're now following the Heart of Wales Line Trail! Can you spot the waymarkers?

2

Look out for these markers as you follow Glanmore Road, bending to the right and then left to reach our first activity stop!

3

Continue along Marine Street which has a few shops, and head towards the coast. You'll reach a roundabout. Carefully cross the roundabout and continue straight ahead to walk over a footbridge. Make your way to the beach for a seaside activity!



4

At the end of the sandy beach, climb up onto the wide path which is part of the Wales Coast Path. Can you see a statue with a bird on it? Head over to this statue for activity 3!

5

Now you have some options! You can continue along the Wales Coast Path which takes you to Burry Port, or our trail heads back along the wide path to St Elli's Bay cafe. This is a great place to have something to eat, go back to the beach for more fun, or head to the playground!

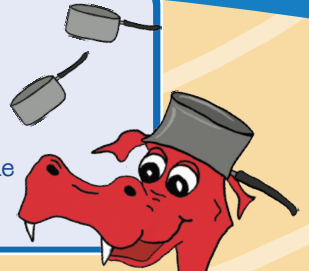
Look out for our Ramble & Scramble poster at the train station to make sure you're in the right place!

Activity 1 - Sospan Sculpture

Can you find the Sospan sculpture?

How many saucepans can you see?

What do you think Ramble and Scramble would cook in these for their dinner?



Activity 2 - Seashells

Look carefully on the sand. How many different seashells can you find in 5 minutes?

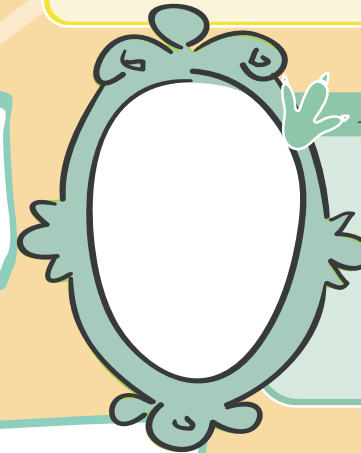


Activity 3 - The big Bird

What type of bird is this?

Can you spot any of these birds out on the water?

Draw a picture of one in the frame!



6

After all of this fun it's now time to re-trace your steps back along Marine Street, passing the Saucepan Statue and back to the train station.

