

Key Points - Literature scope

Adult Social Care Nursing
Workforce Development Project

1 There is an
increasing
demand for
adult social
care



2 Training and
learning culture
should be
ingrained in
adult social care

3 Learning is a key
component of
work quality of
life



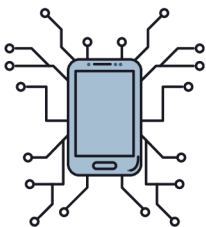
4 Work
satisfaction is a
mechanism
which helps
staff retention

**Inadequate
Apprenticeship
funding could
contribute to the
decline in
apprenticeship
numbers**



**6 Portability
problems should
be resolved with
new accredited
level 2 training**

**7 The
implementation of
technology in care
is likely impeded
by gaps in digital
skills**



**8 New untested
career
pathways
have been
published**

**Full report available on the
Project website**



BUCKINGHAMSHIRE
NEW UNIVERSITY
EST. 1891

Buckinghamshire
Health & Social
Care Academy



RSPH
ROYAL SOCIETY FOR PUBLIC HEALTH
VISION, VOICE AND PRACTICE

Funded by



Burdett Trust
for Nursing