

# BHSCA NEWSLETTER

Buckinghamshire  
Health & Social  
Care Academy



## INSIDE THIS ISSUE

- Foreword from the Director of Strategy at Buckinghamshire Healthcare NHS Trust, a valued partner organisation
- In depth summary of our Academy's structure and operation
- Our Affiliated Agencies' news including new events
- Updates with ongoing projects across our Faculties and external stakeholders
- What's to come in Quarter 2



### BHSCA's 4<sup>th</sup> Annual Conference

Held at the Compleat Angler in Marlow, this year's Annual Conference focused on innovation, collaboration and workforce development. The event brought together colleagues from health, social care, education, local government, VCSE and workforce development to share learning, strengthen partnerships and explore collective responses to future system challenges, reflecting a shared commitment to integrated, system-wide working. [See more here](#)



### Completed & Published works by Dr Hoda Wassif (R&KE Faculty)

We are delighted to celebrate the publication of "Enhanced Interviews: Creative Approaches to Qualitative Research Interviewing", co-authored by Dr Hoda Wassif (our co faculty lead for the R&KE faculty) and Dr Maged Zakher.

The book introduces innovative interviewing methods (including the concept of Enhanced Interviews) that encourage creativity, engagement and deeper reflection, helping researchers to explore experiences and perspectives in new and effective ways.



### VBIP Project update - end of project Year 1

The Volunteer Bucks Inclusive Partnership (VBIP) Project is nearing the end of the first of its five funded years. The project team is reviewing Year 1 activities and planning for Year 2 and beyond. BHSCA continues to support workstreams 3 and 5 alongside Community Impact Bucks, while all five workstreams are progressing well. An evaluation of Year 1 is underway and will be submitted to The National Lottery Community Fund.

## AFFILIATED AGENCIES OF BHSCA

The Coaching  
and Mentoring Pool

part of the Buckinghamshire Health & Social Care Academy



BUCKINGHAMSHIRE  
COMMUNITY WELLBEING HUB

## OUR PARTNERS

The Academy is a non-profit partnership between Buckinghamshire Council, Buckinghamshire Healthcare NHS Trust, Buckinghamshire New University, University of Bedfordshire, NHS England, Buckinghamshire College Group, and FedBucks.

## OUR PURPOSE

To optimise the Health and Social Care workforce's education, training and skills development through partnership-working across systems, ensuring the best possible delivery of care to the population of Buckinghamshire.



# BHSCA NEWSLETTER



*Foreword from our partner at  
Buckinghamshire Healthcare NHS Trust:*  
**Gemma Thomas, Director of Strategy**



We are at an exciting and important moment in our journey towards integrated care in Buckinghamshire. The challenges facing our health and social care system are significant, from rising demand, complex needs and financial pressures. But I have never been more confident in our collective ability to meet those challenges, because I see the evidence of what is possible when we work together.

Neighbourhood working sits at the heart of our integration ambitions. When health, social care, voluntary sector and community partners come together at a local level, genuinely understanding the needs of their populations and co-designing solutions, the results are transformational. People are supported earlier, crises are prevented, and trust is built. That is not a distant aspiration; it is happening in Buckinghamshire right now, through: health coaching, proactive assessments, moving care closer to home, signposting to voluntary and community services and many more ways.

Integrated care is already benefitting people in Buckinghamshire Joyce\* ( \*Name changed to protect privacy) aged 91, arrived at a proactive clinic with a quiet accumulation of risks, memory decline, recent falls, reduced nutrition and unidentified health conditions. This could easily have led to a hospital admission. Instead, through proactive assessment and coordinated care across multiple services, her risks were identified and managed early. She remained at home, with her family, and crisis was prevented rather than treated. That is neighbourhood working at its best.

The Buckinghamshire Health and Social Care Academy has a vital role to play in enabling this shift. By building the skills, knowledge and relationships that integration demands, across organisational boundaries and professional disciplines, to equip our workforce to lead and sustain meaningful change. I encourage each of you to engage with the learning and development opportunities on offer, and to champion this agenda within your own teams and services. Integration is not something that happens to us, it is something we build together. Thank you for everything you do. To find out more about Integrated Neighbourhood Teams, click the icon below.

*Gemma Thomas*

[LEARN MORE](#)





# BHSCA NEWSLETTER



## ABOUT US

Buckinghamshire Health & Social Care Academy was founded in 2019 as a non-profit partnership organisation, established by the Buckinghamshire NHS Trust, NHS England, Buckinghamshire New University, Buckinghamshire Council, University of Bedfordshire, Buckinghamshire Local Enterprise Partnership (*now part of the Bucks Council*), Buckinghamshire College Group, Primary Care & FedBucks.

**Our aims** are to unite the principal employers who commission and deliver health and social care in Buckinghamshire with local education and skills providers, key strategic public sector funders and others who work in alliance with the County.

**Our vision** is to optimise and integrate innovative health, social work and social care workforce education, training and development across Buckinghamshire. The Academy seeks to co-create a gateway enabling the provision of innovative and integrated careers advice, education, training and organisational/professional development for the health, social work and social care workforce in Buckinghamshire. Making Buckinghamshire the preferred destination and long-term base for our workforce to pursue vibrant, flourishing and fulfilling careers in primary, secondary and community health care, social work and social care.

### The Academy's key objectives are to:

- Enable innovative, collaborative, inclusive evidenced based workforce-related learning and development activities, which are accessible to all informal and formal health, social work and social care workers in Buckinghamshire, including volunteers and carers.
- Be a key county-based delivery vehicle for system people plans that form part of the integrated care system in bob and which reflect key local, regional and national workforce priorities.
- Identify and convene planned and integrated education and training programmes that meet specific local workforce needs as identified by multi-agency services in Bucks delivered in collaboration with our partners.
- Ensure that the local economy attracts and retains the skills required to enable the Buckinghamshire population to benefit from the jobs created across the health and social care sector; and
- Lead the development, integration and embedding of new career frameworks and competencies for health, social work and social care workers, ensuring compliance with local, regional and national occupational and workforce competency frameworks and their associated workforce transformational requirements.

[Watch our promo video here](#)



# ABOUT US

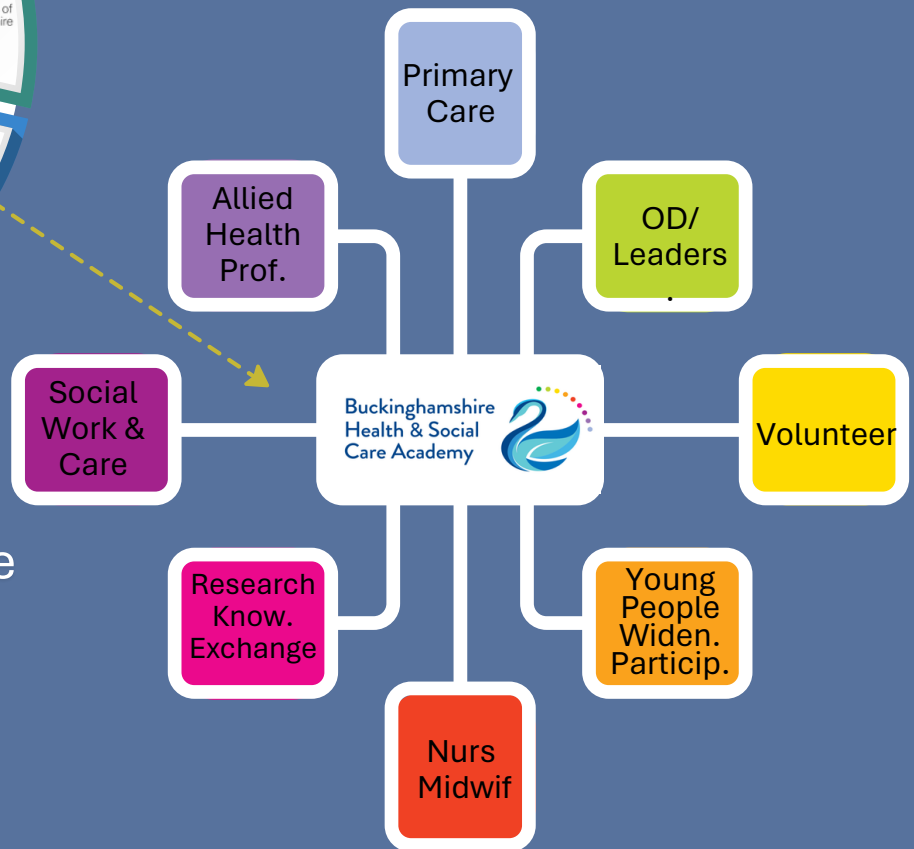
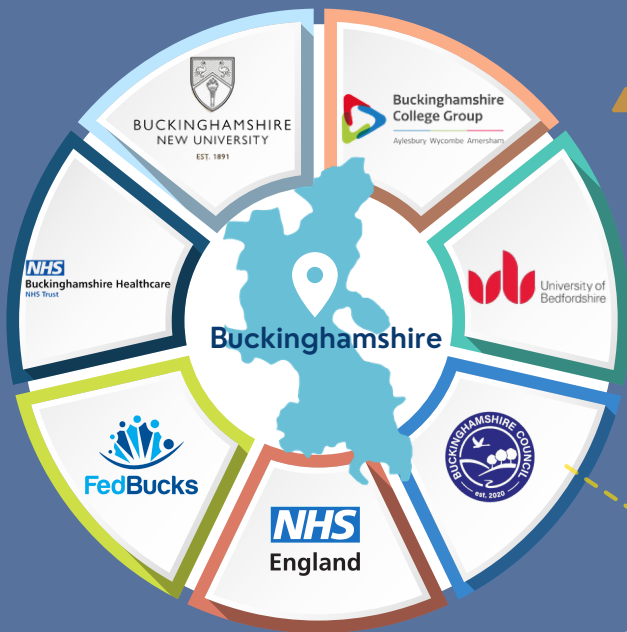
## Our System-Wide Impact: Thames Valley Integrated Care System (ICS)



Our 'Place' of **Buckinghamshire** in the Thames Valley ICS for education, training, & development of the County's health & care workforce



Convening programmes of work across the County through our **7 Partner organisations**



Carried out via our active **8 Faculties** which are voluntarily led by field experts within our Partner organisations



## ANNUAL BHSCA CONFERENCE



At the **BHSCA 4th Annual Conference**, held at the Compleat Angler in Marlow, colleagues from across Buckinghamshire's health and social care system came together to explore innovation, collaboration, and workforce development. The event provided an opportunity to share learning, strengthen partnerships, and consider collective responses to future system challenges.

The conference welcomed a wide range of attendees from health, social care, education, local government, and workforce development. This diversity highlighted a shared commitment to system-wide working and the value of bringing multiple perspectives together to support sustainable improvement. The morning opened with keynote contributions from **Professor David Sines CBE**, followed by **Dr George Gavriel** and **Sandra Grant**, who encouraged reflection on future opportunities in health and social care and the importance of collaborative leadership.

Interactive workshops then explored practical approaches to innovation and system development. **Gemma Blaza**, **Adam Poland**, and **James Elliott** led sessions on how simulation can support innovation across the system, while **Jason Greasley** explored complexity and adaptation within health and social care environments.



Further sessions included **Gemma Thomas**, **Dee Irvin**, and **Racheal Alley** discussing Integrated Neighbourhood Teams, helping attendees learn through collaboration with peers. **Jason Greasley** alongside **Laura Delany** focused on building resilient organisations, and the value of a coaching-led approach to support teams in the system.

The day concluded with an inspiring keynote from **Kirsty Murphy MBE**, which brought together the overarching themes of collaboration, innovation, and future-focused working. A strong emphasis throughout the conference was placed on collaboration and engagement, with attendees actively sharing ideas and building connections across organisational boundaries.





## COMPLETED WORK & PUBLICATION

### NEWLY PUBLISHED WORK BY OUR HEAD OF FACULTY FOR RESEARCH AND KNOWLEDGE EXCHANGE



#### BACKGROUND

We are delighted to celebrate the publication of "Enhanced Interviews: Creative Approaches to Qualitative Research Interviewing", co-authored by Dr Hoda Wassif and Dr Maged Zakher.

Dr Wassif is the Head of Faculty for Research and Knowledge Transfer and has made a significant contribution to advancing research, education and knowledge exchange across health and social care. Her latest publication draws on extensive expertise in qualitative research and provides practical guidance for researchers seeking to generate richer and more meaningful data through innovative interviewing techniques.

The book introduces innovative interviewing methods that encourage creativity, engagement and deeper reflection, helping researchers to explore experiences and perspectives in new and effective ways.

#### ABOUT THE BOOK

Qualitative interviews are one of the most widely used research methods, helping researchers explore people's experiences, perspectives and stories in depth. In this new publication, Dr Wassif and Dr Zakher introduce the concept of Enhanced Interviews, a creative and participant-centred approach that goes beyond traditional question-and-answer formats.

The book explores how researchers can use objects, documents, sensory prompts, multimedia resources and other innovative techniques to encourage deeper reflection, richer conversations and more authentic data collection. It also provides practical examples and guidance for researchers, educators and practitioners looking to strengthen the quality and impact of their research.

#### CONGRATULATIONS

Congratulations to Dr Wassif on this fantastic achievement. We are proud to celebrate this contribution to the field of qualitative research and look forward to seeing the impact of the book across research, education and practice.

#### ABOUT THE AUTHOR

Dr Hoda Wassif is a respected researcher, educator and leader with extensive experience across health and social care. She is passionate about supporting innovation, developing research capability and building strong links between research and practice. Through her work, she continues to champion creative approaches that help researchers generate meaningful insights and improve outcomes for the people and communities they serve.

Click [here](#) for a link  
to the newly  
published work



## Team Development Procurement BCW Hub- Day 8



Opportunities like this allow managers to observe their teams in action; how they collaborate, problem-solve, and communicate.

For managers, these sessions are invaluable, allowing attendees to gain insight and a deeper understanding of their team.



## The Volunteer Bucks Inclusive Partnership Project

In partnership with Buckinghamshire Health and Social Care Academy, the Volunteer Bucks Inclusive Partnership Project has worked with volunteers, volunteer managers, community groups and health and social care partners to identify ways to make volunteering more accessible, improve retention, strengthen collaboration, support shared learning, and increase access to training.

Learning has highlighted that cross-sector volunteering journeys are unlikely to follow a linear pathway. People engage with volunteering with different motivations, intentions and desired outcomes, and this insight is shaping our approach to multiple pathways, progression and support.

[SEE MORE  
HERE](#)



Year one has been intentionally exploratory, with future work focusing on volunteers' experiences of moving between organisations. This will include cross-training, promotion, integrated volunteer roles, piloting incentives and upskilling approaches, and strengthening VCSE and health and social care infrastructure.

Workstream 5 has engaged local employers to explore employee-supported volunteering and wider business involvement across Buckinghamshire. This builds on work to create flexible, accessible volunteering opportunities for students and other groups, helping volunteering fit around people's lives and strengthen communities.

# Q.1 BCW HUB REVIEW

BUCKINGHAMSHIRE  
COMMUNITY WELLBEING HUB  
CHALFONTS & GERRARDS CROSS HOSPITAL

**MEET UP MONDAYS**

Awarded Place of the Year at the 2025  
Excellence in Health Creation Awards!

**Connection & Collaboration Sessions**  
1-2:15pm  
20th July  
17th August  
21st September  
19th October

Strengthen relationships with our valued professional partners. The informal sessions will offer a welcoming space to connect, exchange insights, and explore new opportunities for collaboration. Please feel free to bring promotional material to showcase your services.

To participate please email: [events@buckscommunityhub.com](mailto:events@buckscommunityhub.com)

"Integrating Care, Nurturing Wellbeing & Empowering Futures"

07554406268  
[events@buckscommunityhub.com](mailto:events@buckscommunityhub.com)  
Buckinghamshire Community Wellbeing Hub

Chalfonts & Gerrards Cross Hospital, Hampden Road, Chalfont St Peter, Gerrards Cross, SL9 9DR

Registered CID 1200330

## Meet Up Mondays

The Buckinghamshire Community Wellbeing Hub (Chalfonts & Gerrards Cross) are pleased to announce the continuation of their Connection & Collaboration Sessions: **Meet Up Mondays**.

These informal sessions are focused on strengthening relationships with valued professional partners, offering a welcoming space to connect, exchange insights and explore opportunities for collaboration. Promotional materials are welcome to help showcase services.

To participate in the Connection & Collaboration Sessions, please email: [events@buckscommunityhub.com](mailto:events@buckscommunityhub.com)



BUCKINGHAMSHIRE  
COMMUNITY WELLBEING HUB

**NHSE Wider Workforce Sessions**  
Free learning for all health and social care staff across Buckinghamshire

Book online

**Supporting our neurodivergent staff**

17th September 2026 - 11:00-12:30  
Chalfonts and Gerrards Cross Hub  
Chalfonts and Gerrards Cross Hospital, Gerrards Cross, SL9 9DR

A learning and sharing workshop discussing how to effectively support staff across the health and social care sector who are neurodivergent and require reasonable adjustments in the workplace.

**Free spaces still available!**

Click above or scan our QR code to book!

Find out more about our sessions and the Buckinghamshire Community Wellbeing Hub at [www.buckscommunityhub.com](http://www.buckscommunityhub.com)  
Join our mailing list at [welcometobuckscommunityhub.com](mailto:welcometobuckscommunityhub.com)  
Follow us on LinkedIn

Funded by NHSE Wider Workforce Funding and Public Health

The Buckinghamshire Community Wellbeing Hub are delighted to introduce their upcoming **NHSE Wider Workforce Session: Supporting our neurodivergent staff**, available to health and social care staff across Buckinghamshire.

This learning and sharing workshop will provide an opportunity to explore how organisations can effectively support neurodivergent colleagues and implement reasonable adjustments within the workplace.

To participate in the session, please book using the QR code provided or email: [welcometobuckscommunityhub.com](mailto:welcometobuckscommunityhub.com) for further information.

## FREE BLOOD PRESSURE CLINIC EVERY WEDNESDAY

### Blood Pressure Clinic

Every Wednesday  
9.30am-10.30am



Buckinghamshire Community Wellbeing Hub

Buckinghamshire New University  
Aylesbury Campus, Walton Street  
HP21 7QG

Contact: [welcometobuckscommunityhub.com](mailto:welcometobuckscommunityhub.com)

## THE CHATTY CAFE SCHEME

[www.thechattycafescheme.co.uk](http://www.thechattycafescheme.co.uk)  
We believe a chat can improve your day!

### Pop Over for a Friendly Chat

Buckinghamshire Community Wellbeing Hub  
59WaltonSt, Aylesbury  
HP21 7QG

Every Tuesday 10am - 12pm



The 'Chatter & Natter table' is a wonderful way of encouraging people of all ages to talk to others. During the day and time above, the table will be hosted by a friendly volunteer.

Do come along - you would be very welcome!

For more information click [here](https://buckscommunityhub.com/) or visit <https://buckscommunityhub.com/>

## HELPING PEOPLE HELP THEMSELVES PROGRAMME

### Helping People Help Themselves

A 4-day, PCI accredited, Advantage Level 4 Health Coaching programme for Chalfonts and Gerrards Cross, delivered by BHSCA



#### ABOUT THE PROGRAMME

This four-day programme develops the skills, confidence and approaches needed to hold high-quality, person-centred conversations that improve health and wellbeing. The programme combines practical tools, behaviour change theory and real-world application, and is highly interactive and practice-based, helping you embed skills that you can use immediately.

#### COURSE DATES

Mon 5th & Tue 6th October  
Mon 16th & Wed 23rd November

#### COURSE LOCATION

Chalfonts & Gerrards Cross  
Buckinghamshire Community Wellbeing Hub, Chalfonts & Gerrards Cross Hospital, Hampden Road, Chalfont St Peter, SL9 9DR



#### What participants say:

"I feel confident to change my mindset from being a fixer to listening."

"It's already proven that many of the techniques have had positive outcomes."



Scan the QR code to apply or visit <https://bhsc.co.uk/Chalfonts-GerrardsCross-Funded-Opportunity> for more info

Or contact [bht.healthcoaching@nhs.net](mailto:bht.healthcoaching@nhs.net)

Contact [welcometobuckscommunityhub.com](mailto:welcometobuckscommunityhub.com) to find out more

Scan the QR code or email [bht.healthcoaching@nhs.net](mailto:bht.healthcoaching@nhs.net) to find out more

# Q.1 THE COACHING & MENTORING POOL REVIEW



### THE COACHING & MENTORING POOL 1ST QUARTER HIGHLIGHTS

- **48** people successfully completed the 4-day Health Coaching programme funded by the ICB.
- **40+** posters were displayed demonstrating how participants applied health coaching skills.
- **26** delegates achieved their Health Coaching qualification, representing a 90% completion rate.
- **22** employees from Buckinghamshire Council and BHT were matched with coaches between April and 9 June.
- **20** coaches completed the Level 5 Coaching qualification in June.
- **15** Buckinghamshire Council employees completed the Level 3 Coaching qualification during April and May.
- **10** people completed the 4-day Health Coaching programme for Be Well Walsall.
- **7** BHT colleagues successfully completed their Level 3 portfolio.
- **2** delegates successfully completed their Level 5 portfolio.
- **1** Health Coaching Celebration Event was held in Walsall showcasing completed delegate posters.
- **1** new BHT Level 3 cohort commenced on 22 June 2026.



## Health Coaching Programme

The CMI Level 7 Certificate in Strategic Leadership and Management, delivered by Convenzis Training and supported by Buckinghamshire Health and Social Care Academy, is a postgraduate qualification for senior leaders, directors, and managers. The programme equips participants with the skills to translate organisational strategy into effective performance and improved patient care, while developing self-awareness, emotional intelligence, and the ability to adapt their leadership style to different situations. It also provides valuable opportunities to build strong peer networks that continue beyond the programme.

Participants consistently praise the programme's clear structure, healthcare focus, engaging delivery, and supportive learning environment. Feedback highlights the practical leadership models, reflective learning, and skilled facilitation that help leaders gain both personal insight and the confidence to drive strategic change.

If you or your team are looking to strengthen your strategic leadership capability and make a lasting impact on health and social care, click below to find out more and book your place.

[book your place here!](#)

**CMI Level 7 Strategic  
Management and  
Leadership**

**CMI Level 7 Certificate**



[LEARN MORE](#)



[BHSCA](#)



[www.bhsca.co.uk](http://www.bhsca.co.uk)



## ACTIVE PROJECTS UPDATE

### Student Placements

BCW Hub  
(Aylesbury)

Buckinghamshire Community Wellbeing Hub has the privilege of currently hosting three T-level students. They have been building their skills at the BCW Hub for approximately one year, with one student returning for their second placement.

During this time, the students have attended and supported partner sessions, providing valuable opportunities to gain insight into the local community, residents, and the VCSE sector.

On 21 May, parents were invited to the 'Starting Reception' event at the Aylesbury Wellbeing Hub.

The event helped parents prepare their child aged 3-5 years old for Reception year, providing specialised advice for parents and supervised play for children.

### 'Starting Reception' Event

BCW Hub

### Notable Events & Announcement

AHP Fac

Belinda Twissell, Practice Development Practitioner within BHT's Rapid Response and Intermediate Care Team (RRIC), has been appointed as Co-Chair of the AHP Faculty and will take over following the departure of current Chair, Melissa Martin, in August.

#### During Quarter 1, the faculty celebrated:

- The Starting Reception: Talk and Play series took place on 19, 20 and 21 May
- National ODP Day (14 May)
- World Orthoptic Day (2 June)
- Dietitians Week UK (9-13 June) marking the British Dietetic Association's 90th anniversary year.

#### Upcoming AHP Celebration Event:

- International Paramedics Day (8 July), to be celebrated on 2 July.

- As of May 2026 the BHSCA led OMMT programme have trained over 6500 health and social care staff in Tier 1, and over 6800 staff Tier 2 training.
- In Buckinghamshire the team have trained over 2000 NHS staff and 500 social care staff.
- Direct Feedback: "The training was absolutely brilliant. Engaging, insightful and thought-provoking. The co-trainers were amazing, and so brave to speak in front of large groups of people and invaluable in making us all think about how we support children and young people with an LD and/or autism."

### Oliver McGowan Training Programme

BHSCA



LEARN MORE



BHSCA

[www.bhsca.co.uk](http://www.bhsca.co.uk)



## ACTIVE PROJECTS UPDATE

### Healthwatch Bucks

Stakeholder  
Project

Healthwatch Bucks is inviting Buckinghamshire residents to contribute to its latest research project, My Health, My Responsibility, which explores attitudes towards managing personal health, the role of the NHS, and the factors that enable or prevent people from accessing support. The research is seeking views from residents for whom prioritising their own health can be difficult. Insights gathered will help inform understanding and support across Buckinghamshire.

To find out more and take part click [here](#)

The Collaborative Quality Improvement Practitioner Programme (CQIP), a new system-wide programme, brought together 15 participants from across Buckinghamshire, including Neighbourhood Leads, Leap UK, Primary Care Networks, Community Pharmacy, Frimley NHS Trust and Buckinghamshire Healthcare NHS Trust. Participants applied quality improvement in practice, shared learning, and built lasting cross-system connections to support future collaboration.

### Collaborative Quality Improvement Practitioner Programme (CQIP)

### Share Your Best Practice

R & KE  
Faculty

A new Health and Social Care (HSC) feature with The Dentist Magazine provides a platform to share best practice across professions. Topics include dementia, autism, nursing, mental health, ageing, disability, inequalities, interdisciplinary working, and community initiatives. Contributors can submit 700-word articles to promote collaboration, innovation, and patient-centred care. **Deadline: 28th of every month, send expressions of interest to Dr Hoda Wassif ([hoda.wassif@beds.ac.uk](mailto:hoda.wassif@beds.ac.uk))**

The final session of the 2025/26 Health Inequalities and Prevention Integrated Community Workforce Development Programme took place in May, bringing colleagues from across Buckinghamshire together to gather community insight. A key takeaway was the strong appetite across organisations to share insight and learn from one another, supporting programmes such as Neighbourhood Health, Family Hubs and Community Health & Wellbeing Workers.

### Health Inequalities: Communities of Practice Volunteer Faculty





## COMING SOON IN Q.2!

### LTAV COMMUNITIES OF PRACTICE

The next Communities of Practice session, Let's Talk About Vaccines: MECC in Practice, will take place on 14th August. Further information about more sessions in Q3 will come next quarter!

### BCW HUB TEAM DEVELOPMENT SESSION

The Coaching and Mentoring Pool's Day 9 of Team Development Procurement at BCW Hub will be held on Friday July 10.

### LETS TALK ABOUT VACCINES (LATV) WEEK FOR HAMPSHIRE & IOW

The next 'Let's talk about Vaccine' Week for Hampshire and the Isle of Wight will be coming soon in September, more information to come in the next quarter!

### BUCKS COMMUNITY WELLBEING HUB

#### Events to join:

Meet up Mondays (Gerrards Cross): [join here](#)  
Supporting our Neurodivergent Staff (Gerrards Cross): [join here](#)  
The 'Chatter & Natter table' (every Friday): [join here](#)

### THAMES VALLEY HEALTH COACHING CONFERENCE

BHSCA's Thames Valley Coaching Conference is scheduled in Q2 for Monday the 13<sup>th</sup> of July.

### SOCIAL CARE NURSES EMPOWERMENT PROGRAMME

The Buckinghamshire Social Care Nurses Empowerment Programme will begin in September and have four valuable sessions to follow in October and November. For more information click [here](#). To sign up click [here](#).

### ACADEMY STRATEGIC PLANNING

We hold our in-person strategic alignment meeting with our Strategic Board to look towards the future and to ensure we are following the business planning cycle.



**LEARN MORE**



**BHSCA**



[www.bhsca.co.uk](http://www.bhsca.co.uk)