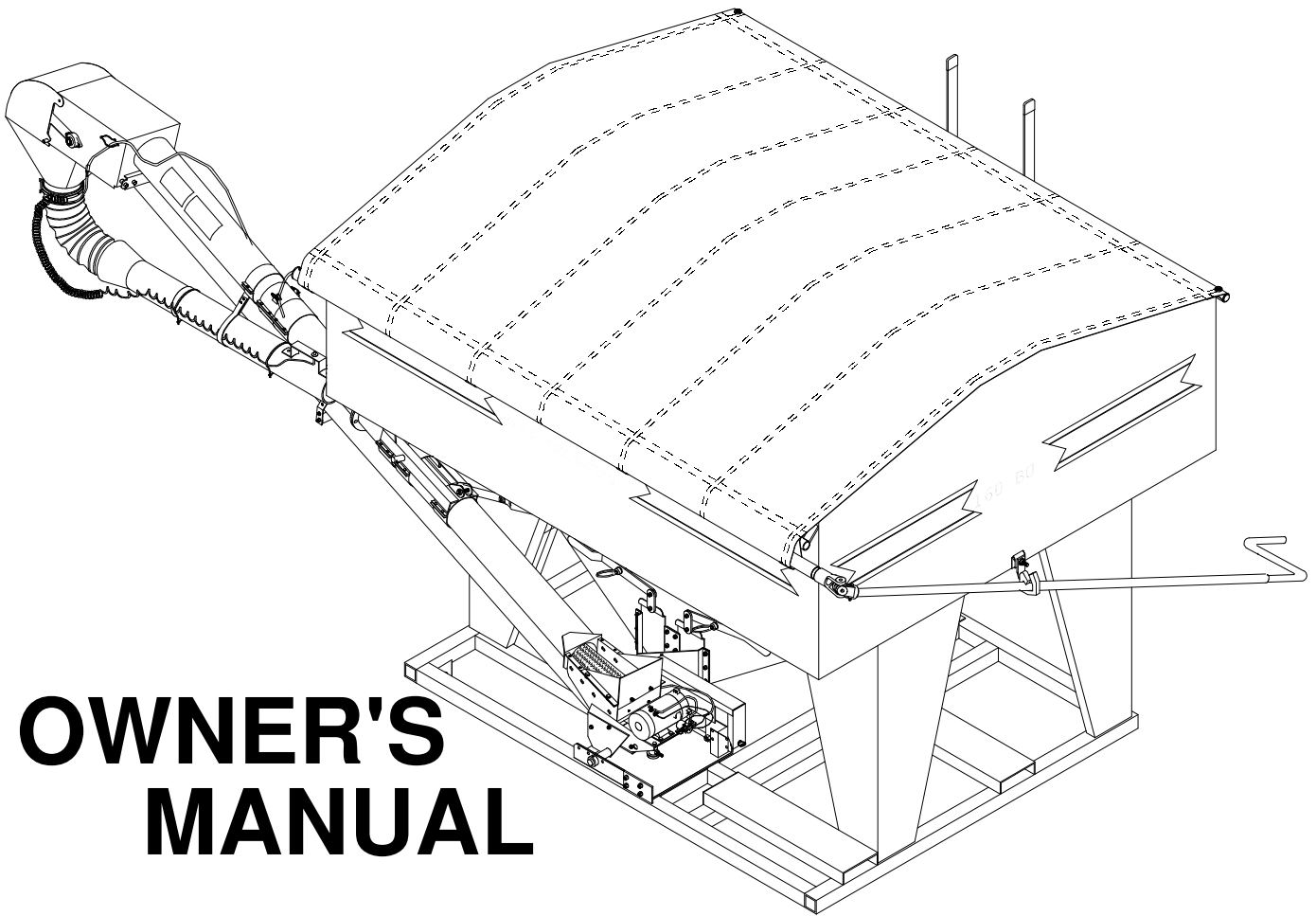




160 & 240 Seed Tender



OWNER'S MANUAL

OPERATION • MAINTENANCE • REPAIR PARTS

Table of Contents

Warranty Information	Inside Front Cover
Operator Qualifications	1
Safety	2-6
Operation, Maintenance, & Belt Training .	7-8
Belt Assembly	9
Dimensions	10-11

Repair Parts

Tank

160 Electric	12-13
160 Gas	14-15
240 Electric	16-17
240 Gas	18-19

Head & Tail

160 & 240 Electric	20-21
160 & 240 Gas	22-23
Telescoping Tube	
160 & 240 Gas	24-29
Cables & Tube Straps 160	30-31
Cables & Tube Straps 240	32-33
Engine	34-35
Flexible Feed Spout	35
Index 160	36
Seed Ladders	37
Remote Control	38-39

Identification

Your Seed Tender is identified by a Serial Number and Model Number. Record these numbers in the spaces provided in this manual and refer to them when ordering parts or requesting service.

Serial Number	Model Number
---------------	--------------

Warranty

CrustBuster/Speed King, Inc. of Dodge City, Kansas, warrants consumer products, so far as the same is of our own manufacture, against defects in material and workmanship under normal and reasonable use for a period of one (1) year after date of delivery to the original purchaser. Our obligation under this warranty is limited, however, to furnishing a replacement part for a defective part, or at our option to repair the defective parts without charge, either method F.O.B. our works, provided the consumer gives CrustBuster/Speed King, Inc. written notice within ten (10) days after said part appears to be defective and affords CrustBuster/Speed King, Inc. an opportunity to inspect. Unless otherwise expressly agreed to by CrustBuster/Speed King, Inc., the consumer shall bear the expense of installation.

CrustBuster/Speed King, Inc. will not be liable for consequential damages where the loss is commercial, including but not limited to loss of profit, delays or expenses.

This warranty sets forth the extent of our liability. The foregoing is in lieu of all other warranties, expressed or implied, including any warranties that extend beyond the description of the product.

Operator Qualifications

Operation of this Seed Tender shall be limited to competent and experienced persons. In addition, anyone who will operate or work around this equipment must use good common sense. In order to be qualified, he or she must also know and meet all other requirements, such as:

1. Some regulations specify that no one under the age of 16 may operate power machinery. It is your responsibility to know what these regulations are in your area or situation.
2. Current OSHA regulations state in part: "At the time of initial assignment and at least annually thereafter the employer shall instruct EVERY employee in the safe operation of servicing of all equipment with which the employer is, or will be involved."
3. Unqualified persons are to STAY OUT of the work area.
4. A person who has not read and understood all operating and safety instructions is not qualified to operate the machinery.



**FAILURE TO READ THIS SEED TENDER MANUAL AND ITS
SAFETY INSTRUCTIONS IS A MISUSE OF THE EQUIPMENT.**



Sign Off Sheet

As a requirement of OSHA, it is necessary for the employer to train the employee in the safe operation and safety procedures with this Seed Tender. We include this sign off sheet for your convenience and personal record keeping.

DATE	EMPLOYER	EMPLOYER'S SIGNATURE



BE ALERT!

Your Safety is involved.



General Safety Statement

WATCH FOR THIS SYMBOL. IT POINTS OUT IMPORTANT SAFETY PRECAUTIONS. IT MEANS "ATTENTION — BECOME ALERT!" YOUR SAFETY IS INVOLVED.

It is your responsibility as an owner, operator, or supervisor to know and instruct everyone using this Seed Tender at the time of initial assignment and at least annually thereafter, of the proper operation, precautions, and work hazards which exist in the operation of this Seed Tender in accordance with OSHA Regulations.

Safety Is No Accident

The following safety instructions, combined with common sense, will save your equipment from needless damage and the operator from unnecessary exposure to personal hazard. Pay special attention to the caution notes in the text. Review this manual at least once each year with new and/or experienced operators.



1. Read and understand the operator's manual before operating this Seed Tender. Failure to do so is considered a misuse of the equipment.
2. Make sure Seed Tender is secure before operating.
3. Always keep children away from Seed Tender when operating.
4. Make sure everyone that is not directly involved with the operation is out of the work area before beginning the operation.
5. Make sure all safety devices, shields, and guards are in place and are functional before beginning the operation.
6. Shut off power to adjust, service, or clean.
7. Keep hands, feet, and clothing away from moving parts. It is a good idea to remove all jewelry before starting the operation.
8. Visually inspect the Seed Tender periodically during operation for signs of excessive vibration, loose fasteners, and unusual noises.



CAUTION

1. Read and understand instruction manual before operating.
2. Keep all safety shields and devices in place.
3. Make certain everyone is clear before operating machine.
4. Keep hands, feet, and clothing away from moving parts.
5. Shut off power to adjust, service, or clean.
6. Make sure machine is secured before operating.
7. When transporting, shut fuel valve lever off.

Pre-Operation Check List

1. Check all bearings for proper lubrication.
2. Check the tube for foreign material.
3. Check all belts for proper tension.
4. Start unit and check tender belt alignment while unit is empty.

BELT CARE

It is suggested that the unit be run every two to three days or more often if possible. This tends to keep the tender belt alive and stops any forming of the belt to the curvature of the tube while the unit is not in use.

NOTE: Belt may deteriorate if not in use and exposed to weather conditions for any prolonged period of time.

Operation Sequence

1. Check drive belt for proper tension.
2. Make sure tender belt is properly tensioned.
3. Allow unit to run empty for a few minutes to flex tender belt.
4. Check tender belt for proper alignment.
5. Before shutting power off, be certain head and tail unit is empty.

STORAGE

Temporary Storage

1. Relieve tension from all belts; both v-belt and tender belt.
2. Store all belt equipment in a dry place. If equipment cannot be stored out of the weather, cover engine and mechanical parts with waterproof material.

Prolonged Storage

1. Remove all belts and store in a cool, dark, dry place.
2. Wash belt thoroughly.
3. Wash tube both inside and out.
4. Lubricate all bearings.
5. Store in a dry shelter.

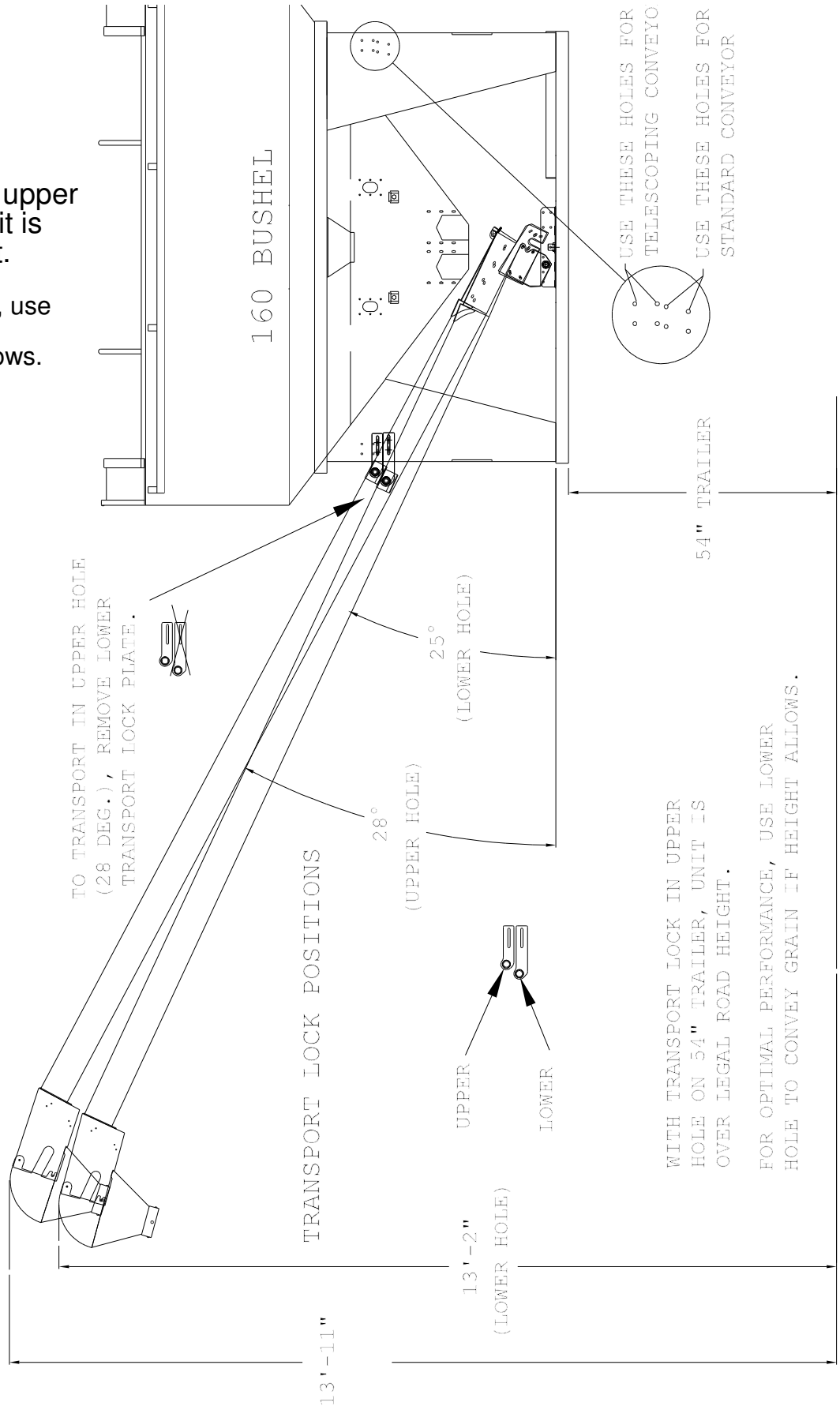
Safety



Transport Lock - 160 Bu

With transport lock in upper hole on 54" trailer, unit is over legal road height.

For optimal performance, use lower hole to convey grain if height allows.



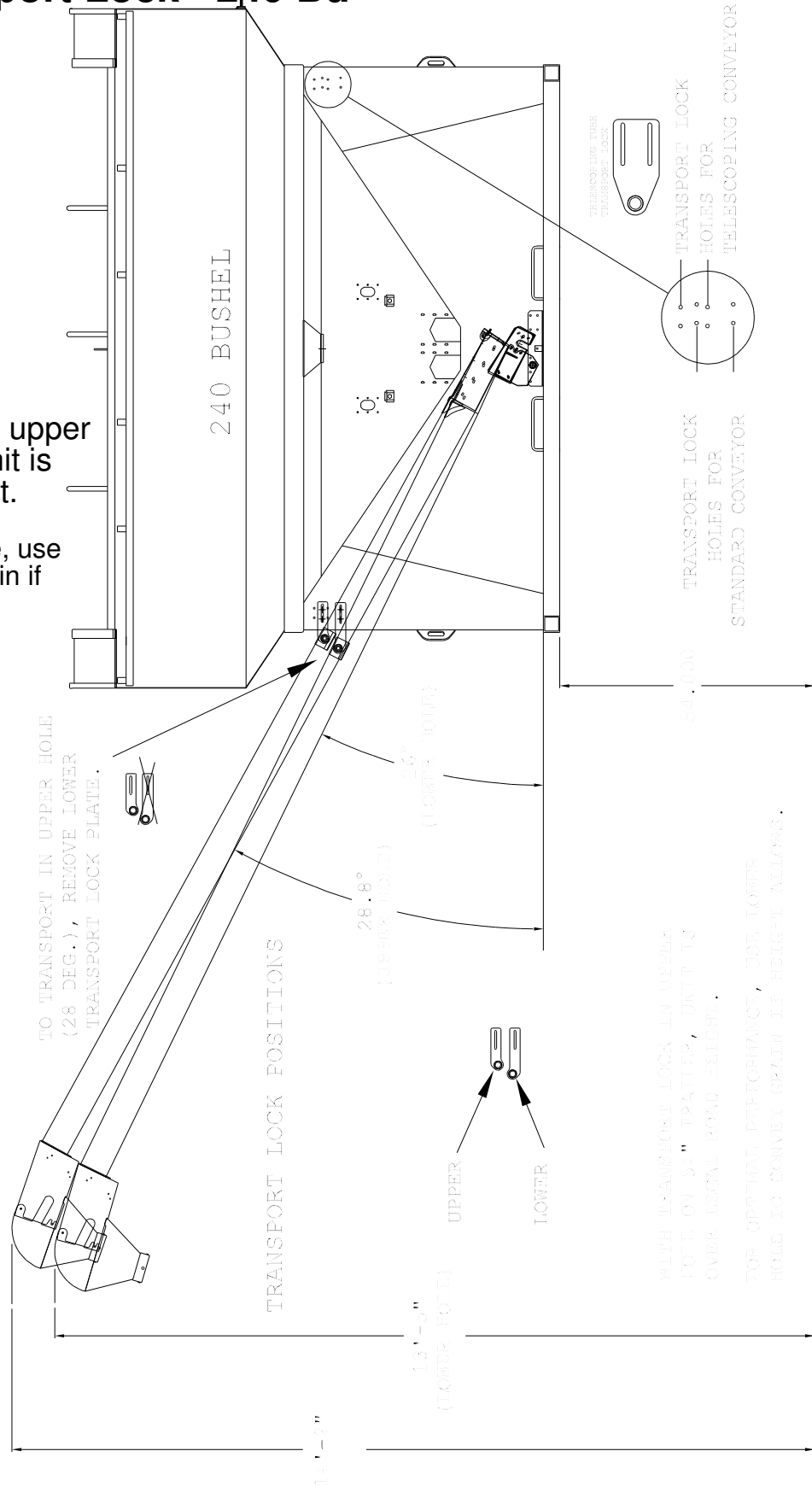
Safety



Transport Lock - 240 Bu

With transport lock in upper hole on 54" trailer, unit is over legal road height.

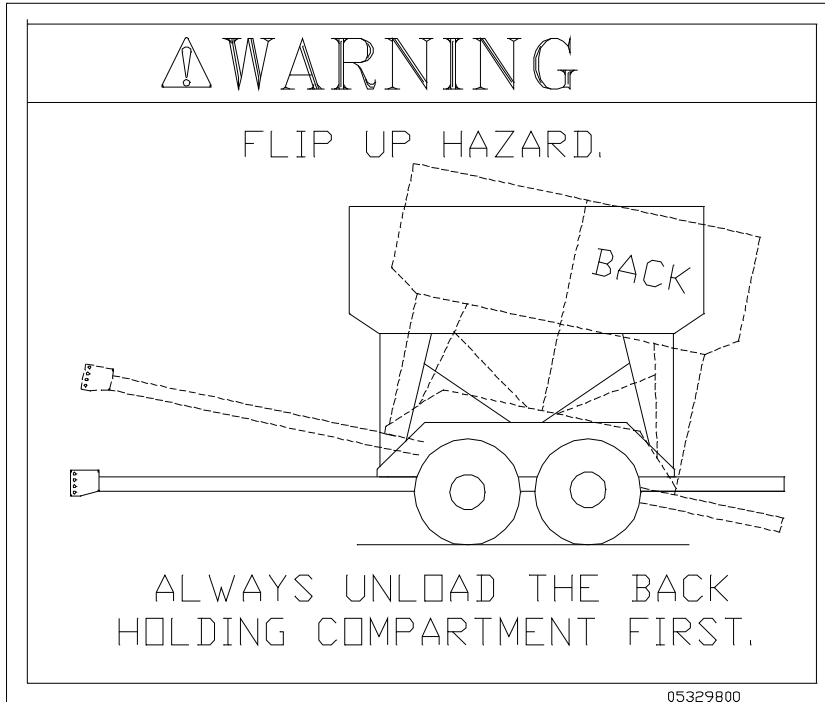
For optimal performance, use lower hole to convey grain if height allows.



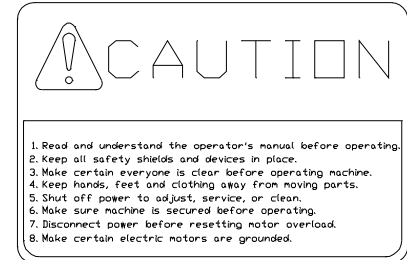
Safety Decals

REMEMBER: If Safety signs have been damaged, removed, become illegible or parts replaced without decals, new decals must be applied. New decals are available from your authorized distributor or factory. Individual decals shown below.

#05329800



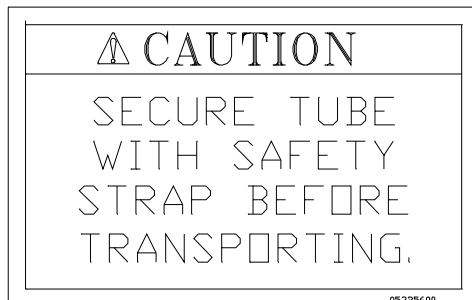
#05303300



#05315700



#05325600



#05327200



#05328000



#05312400



Maintenance

Preventive maintenance is the key to the long life of any mechanical device.

Careful and systematic inspection of the Seed Tender will result in maximum, trouble-free service.

BELT REPLACEMENT

To replace the belt, cut it into and hand rotate the head roller until belt has been removed. Install appropriate belt as outlined in assembly instructions. (*See page 6.*)

HEAD ASSEMBLY TAKE-UP

After extended use, the belt may stretch to the point that there is not sufficient take-up in the head assembly to tighten it. Obtain additional take-up by cutting a 6" to 8" section from the belt. A new splice lacing may be ordered from your CrustBuster/Speed King distributor or from the factory.

PERIODIC CLEAN-OUT

Due to the characteristics of certain materials, residue sometimes collects between the tender belt and the tube. Check the unit periodically for any material build up in this area. If residue appears excessive, remove the tender belt and thoroughly wash the belt and tube. Allow belt and tube to dry before reinstalling the belt.

When the Seed Tender is not being used, secure belt to the tube to prevent belt from flopping in the wind, possibly breaking return idlers or ripping belt.

LUBRICATION

All bearings which are fitted with grease zerks should be lubricated at the conclusion of each operating day. Before greasing the bearings, make certain the zerks are free of dirt, otherwise this will be passed into the bearing race. If the unit will be out of service for a period of time, purge the bearings.

BELT TRAINING PROCEDURE

A belt correctly installed and trained will run straight and true. The belt must run centered on all terminal rollers, take-up rollers, and return idlers throughout the entire belt length.

Incorrect installation and training can result in severe edge damage, material spillage, material leakage through the skirt rubber at the loading point, and excessive power demands. Material spillage is the usual reason for belt carcass ruptures and pulley cover gouging and stripping, while leakage at the skirt rubber results in excessive conveyor cover wear under the skirts.

ALIGNMENT

All rotating parts -head roller, tail roller, and return idlers- must be at a 90 degree angle to the direction of belt travel, must be level, and the midpoint of each centered on a line when properly aligned.

Alignment is checked by running a tight wire from the center of the head roller to the center of the tail roller.

Level all rotating parts. If a part is not level, the belt will run to the lower side.

BELT SPLICING

A belt must not run out at the splice area. Runout will occur if the belt is not cut square or splice is not installed square.

Operation

1. Prior to the start-up, check to see that belt is free from any objects that would bind or tear.
2. On starting for the first time, with no load on belt, apply power for a few seconds only to see that the belt is well centered in the tube and on the return.
3. It should be noted at this time that too much tension on the belt will make adjustment or training much more difficult, shorten the life of the belt, and waste power. The belt should be tensioned tight enough so the drive roller does not slip.

BELT TRAINING

It is essential that the belt be properly trained at all times. For this reason, all rotating parts should always be at right angles to the tender belt.

Slight adjustment of roller shafts may be required to keep belts centered on them i.e., if the belt runs to one side of the roller - apply more tension to this side of the belt by advancing the roller shaft on this side. This can be done on the head section as long as adjustment bolt does not vary more than 1/4". If it does, then some adjustment will need to be done on the tail end.

If the belt tends to veer to one side of the return strand, the belt can be centered by "knocking" ahead (in the direction of belt travel) the end of the return idler to which the belt runs. A belt correctly installed will usually train well both empty and loaded, except as noted:

1. One or more rotating parts not in alignment.
2. Belt tensions in some part of system (usually at tail section) are below minimum recommended.
3. Belt not loaded centrally.

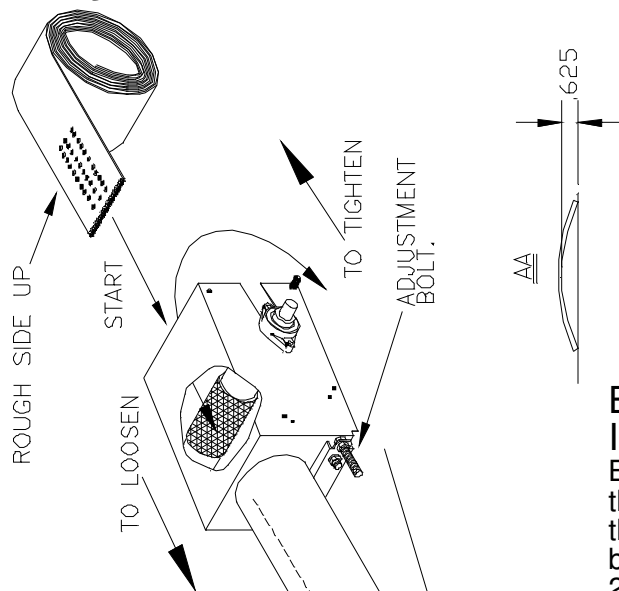
When a belt is initially started, it should be jogged around the system to determine if a major runout occurs which could damage belt and belt edges. If runout occurs at some point of the system, the reason is usually a return idler or roller out of alignment before the runout. Alignment should be rechecked before restarting.

After the belt can be safely run without damage, final training should begin with the head roller. The belt must enter the head roller in the center without movement from side to side. If the belt is not centered on the tail pulley, the return strand of belt should be observed for any section which is not centered on the return idlers. If the belt is not centered at some point, move return idlers starting before this point to correct centering of belt. Movement of idler bracket should be gradual and only 1/16" to 1/8" remembering that the belt will move in the direction that it first contacts the idler. The same corrective action should be taken at the tail roller.

After the belt is trained empty, the belt should be trained with a load. The take-up adjustments are made to prevent belt slip and keep tensions at all points above minimums recommended when belt is operating with a load.

If slip occurs under load, additional belt tension should be applied by adjusting the take-up only enough to prevent slip from occurring under load, and when started with a load.

Belt Assembly



BELT TIGHTENING INSTRUCTIONS

Belt should be tightened before you train the belt. Tightening the belt is done on the head roller by tightening the take up bars evenly. Belt is tight when applying 25 lbs. of force, centered between the return rollers, there is no more than 2 inches of deflection.

BELT ASSEMBLY INSTRUCTIONS

At the start point, see view of head and tail assembly. Drop belt over the top of head roller and gravity feed belt down the tender tube to the bottom. Guide the belt over the top of the tail roller. Make sure rough side is UP and the smooth side is DOWN against the inside of wall of the tube.

Route both ends around head and tail rollers and over all return idlers mounted under the tube. Slide belt forward or back through tube so the ends of the belt meet at a convenient location between return idlers to facilitate joining.

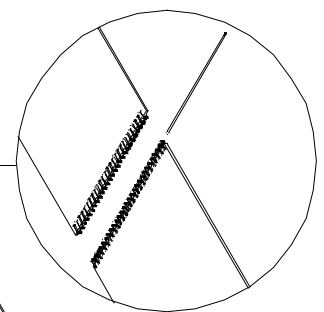
Align and interlace belt and clipper lacings. Slip splice pin (Plastic covered cable) through clipper lacings to secure.

FOR FERTILIZER USE ONLY

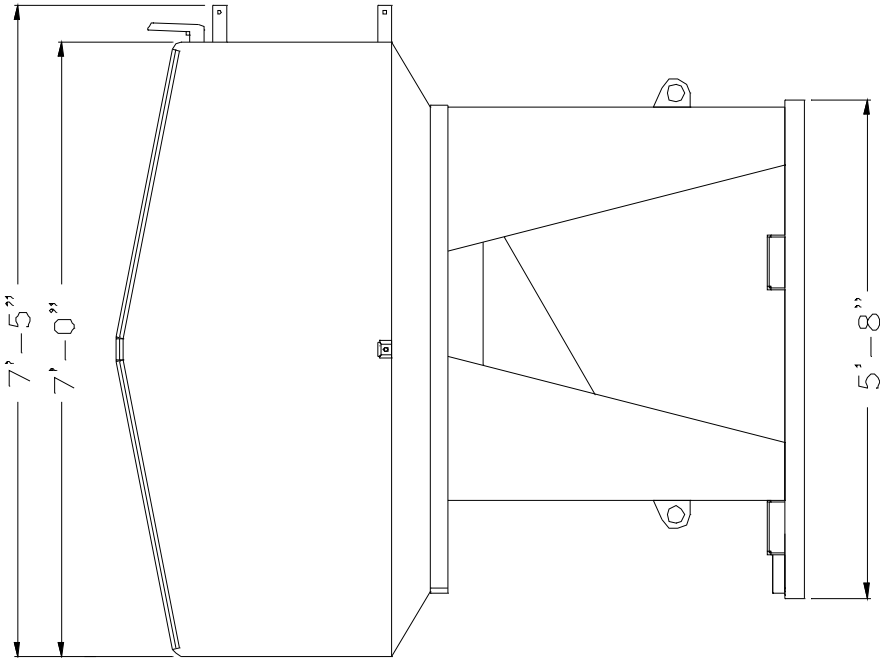
Apply rubber adhesive, from tube furnished, to both sides of clipper lacing. This is not done at the factory before shipping. Smooth adhesive and allow to set in accordance with package directions. This rubber adhesive secures splice pin in place and seals, so fertilizer dust does not settle on back side of belt and cause inside of tube to rust.

Tighten belt by turning adjustment bolts on head assembly in. Tighten evenly on each side until belt is tight.

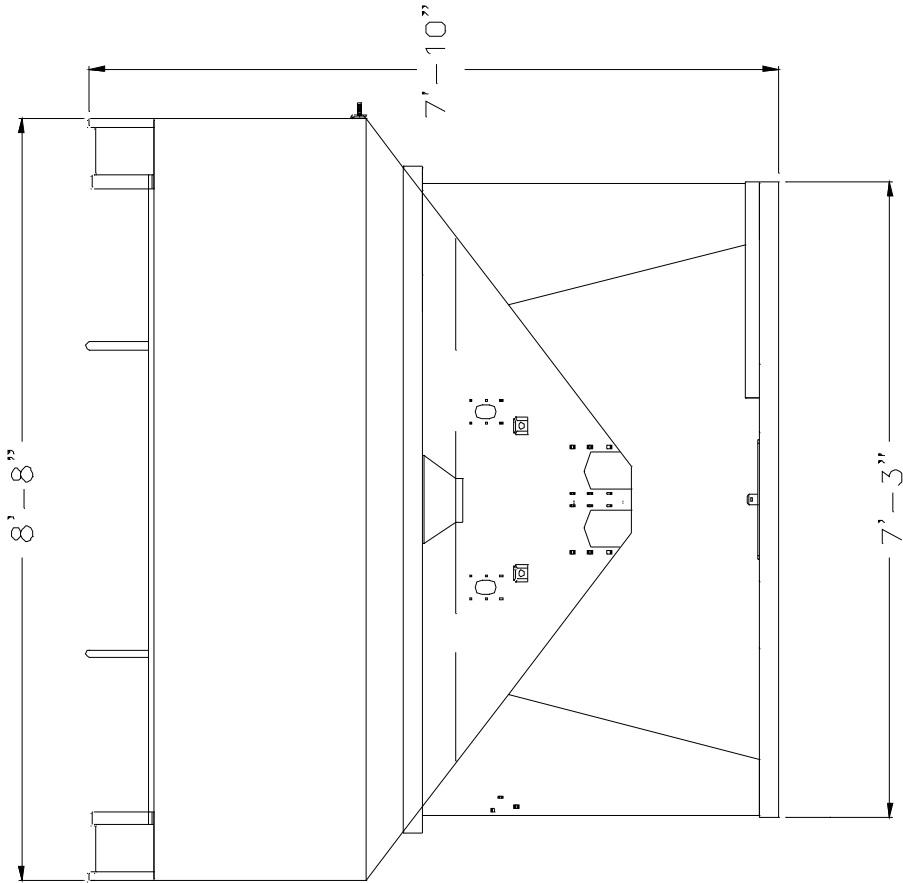
To train belt, see belt training instructions in this manual.



Seed Tender 160 Dimensions

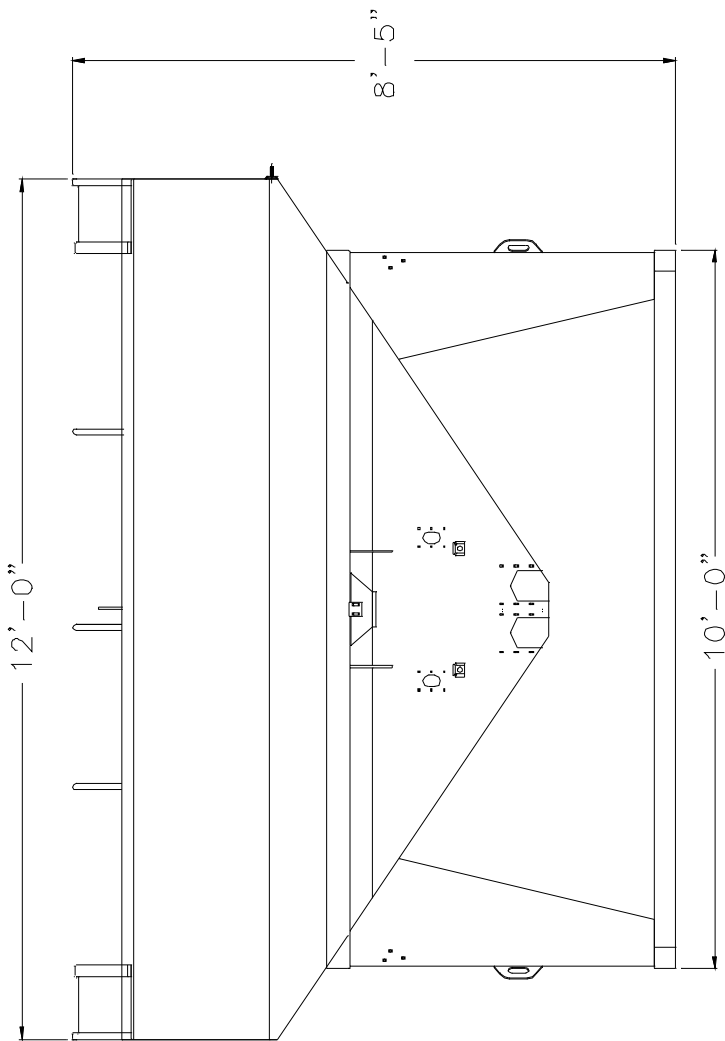
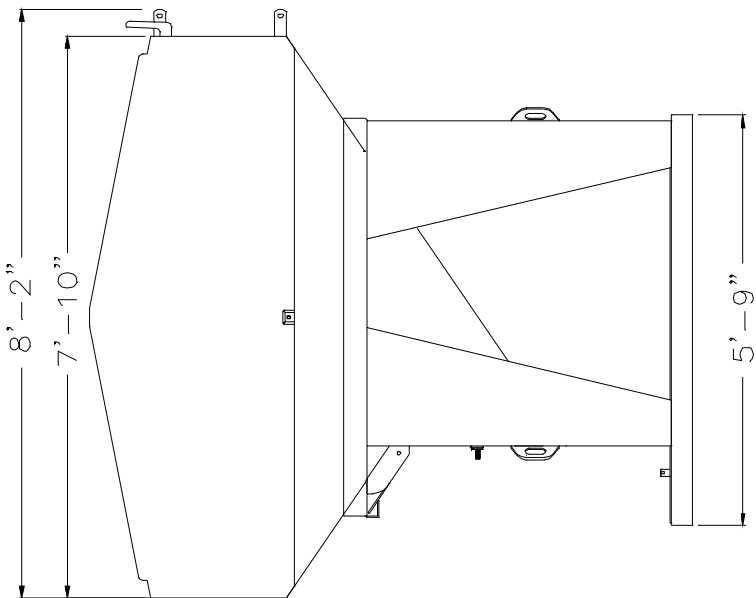


empty	3300	lbs.
full	9600	lbs.
full	12,900	lbs.
	2960	lbs.
	1080	lbs.
	2220	lbs.



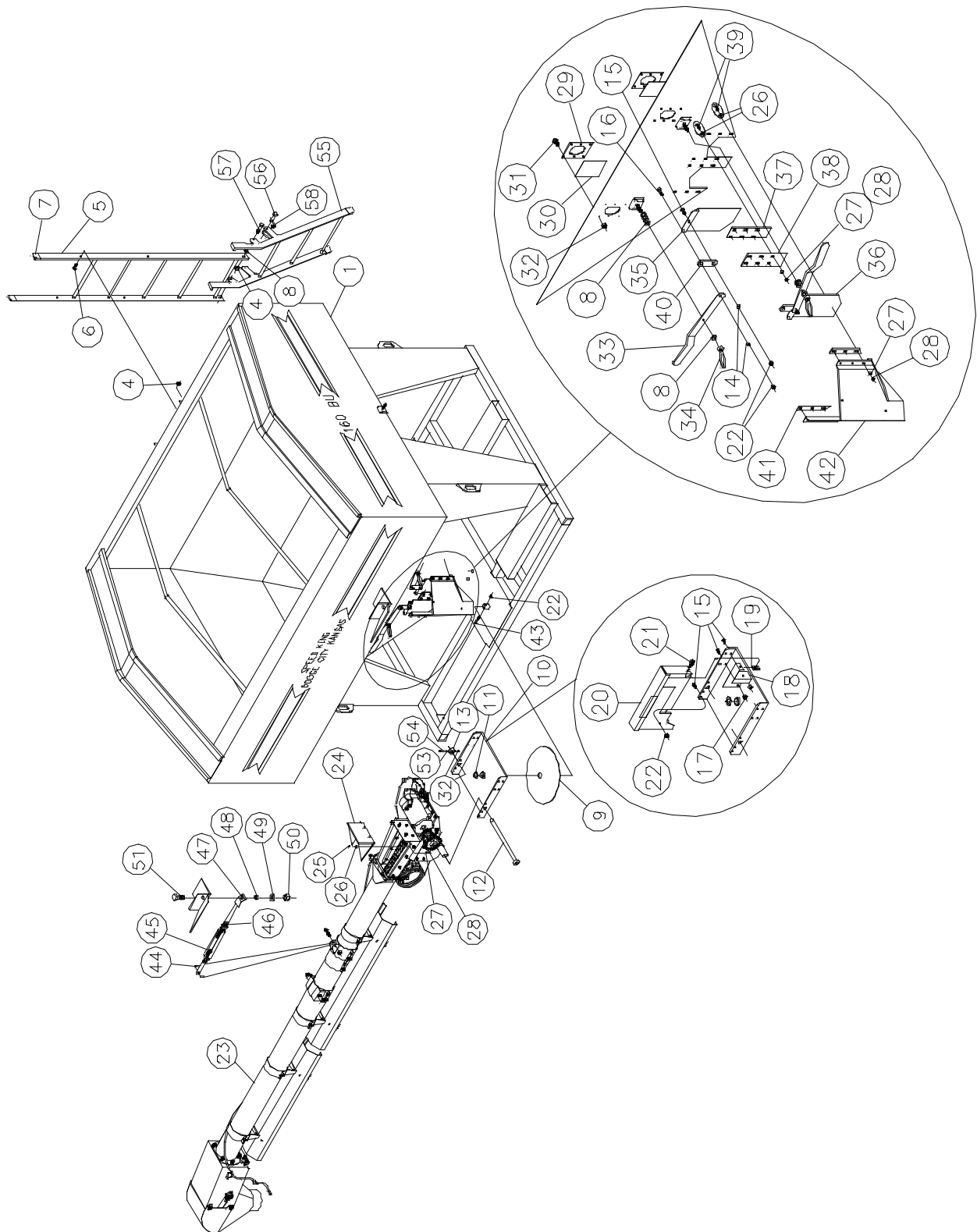
160 Bu Tender with Tube and Trailer
160 Bu Tender with Tube and Trailer
Axle Weight with Tender and Trailer
Axle weight with tube straight out side
Trailer Weight
160 Bu tender and Tube

Seed Tender 240 Dimensions



240 Bu Tender with Tube	empty	2685 lbs.
240 Bu Tender with Tube	full	17,085 lbs.

Seed Tender 160 Tank - Electric

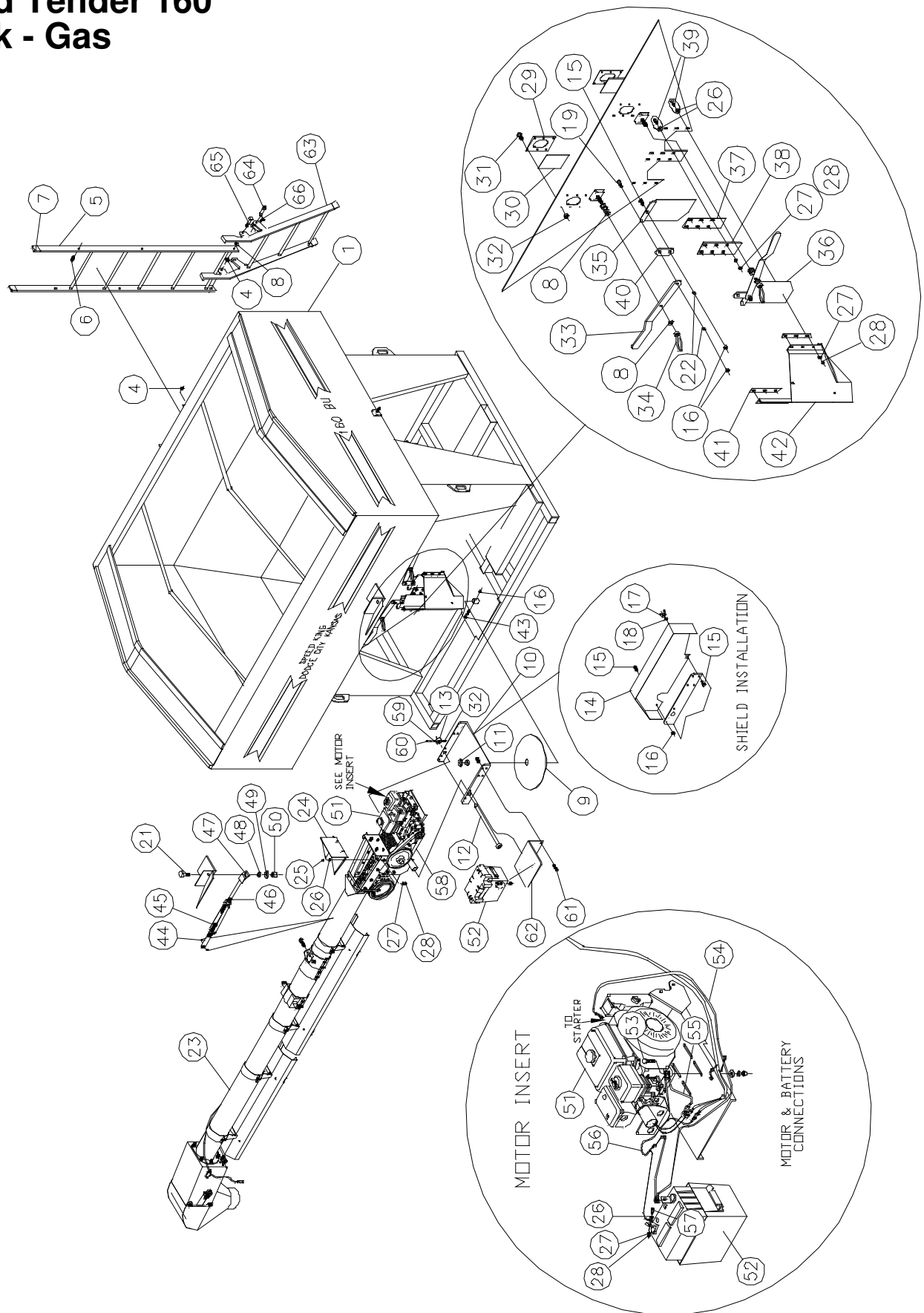


Seed Tender 160

Tank - Electric

Item	Qty	Part No.	Description	Item	Qty	Part No.	Description
1	1	82313800	Tank w/Frame	29	2	262170	Window Back Plate
2				30	2	571315	Plastic Window
3				31	12	01057900	HHCS 1/4" x 3/4"
4	6	331363	Nylock Nut 1/2"	32	12	330522	Nylock Nut 1/4"
5	1	82322900	Ladder 6'	33	2	17960600	Handle
6	4	01180900	HHCS 1/2" x 1 1/4"	34	2	337352	Handle Nut 1/2"-13 x 4 1/2"
7	4	00716100	Vinyl Cap	35	1	17940800	Hopper Door Left
8	12	330159	Flat Washer 1/2"	36	1	17941600	Hopper Door Right
9	1	570630	Plastic Wear Plate	37	1	17910100	Hopper Door Back Plate
10	1	82114000	Pivot Base	38	1	17919200	Hopper Door Front Plate
11	1	332569	Machine Bushing 1 7/8" x 1 1/4" x 10 ga	39	12	01047000	Carriage Bolt 5/16" x 1"
12	1	967638	Pivot Base Shaft	40	2	17961400	Linkage Plate
13	1	153478	Lock Bushing	41	2	17909300	Spout Back Plate
14	4	149393	Bushing 1/2" x 3/8" x 5/16"	42	1	82314600	Spout
15	5	01017300	HHCS 3/8" x 1"	43	1	331884	HHCS 3/8" x 2 1/2"
16	2	01158500	HHCS 3/8" x 1 1/4"	44	1	17287400	Turnbuckle Pin
17	2	330035	Hex Nut 3/8"	45	1	06814800	Turnbuckle 1" x 8 3/4"
18	1	17306200	Guard Bracket	46	1	332288	Jam Nut 1"
19	1	01574300	Clip Nut 5/16" U-type	47	1	82527300	Turnbuckle Bracket
20	1	62382700	Chain Guard	48	1	605220	Bushing 1 1/4" x 1 x 1/2" HS
21	1	01489400	Thumb Screw 5/16" x 3/4"	49	1	330407	Flat Washer 1"
22	6	330837	Nylock Nut 3/8"	50	1	330597	Nylock Nut 1"
23	1	62759600	Head & Tail 15' Tube w/Wind Guards	51	1	01172600	HHCS 1" x 2 1/2"
24	1	82099300	Tail Hopper	52			
25	4	01144500	HHCS 5/16" x 3/4"	53	2	02016400	Flat Washer 1/4"
26	16	330852	Flat Washer 5/16"	54	1	02393700	HHCS 1/4" x 2 1/4"
27	16	330845	Lock Washer 5/16"	55	1	970137	Extension Ladder
28	16	330811	Hex Nut 5/16"	56	1	609255	Clevis Pin 1/2" x 1 3/8"
				57	2	01147800	HHCS 1/2" x 1 1/2"
				58	1	330928	Klik Pin 3/16"
						03824000	Tarp 160 Seed Tender

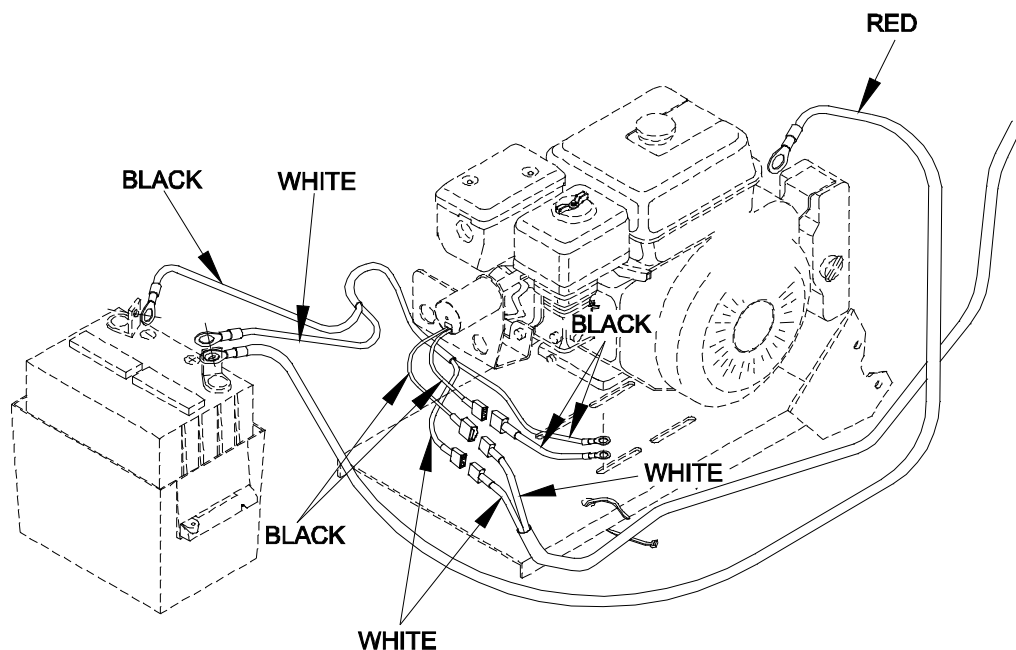
Seed Tender 160 Tank - Gas



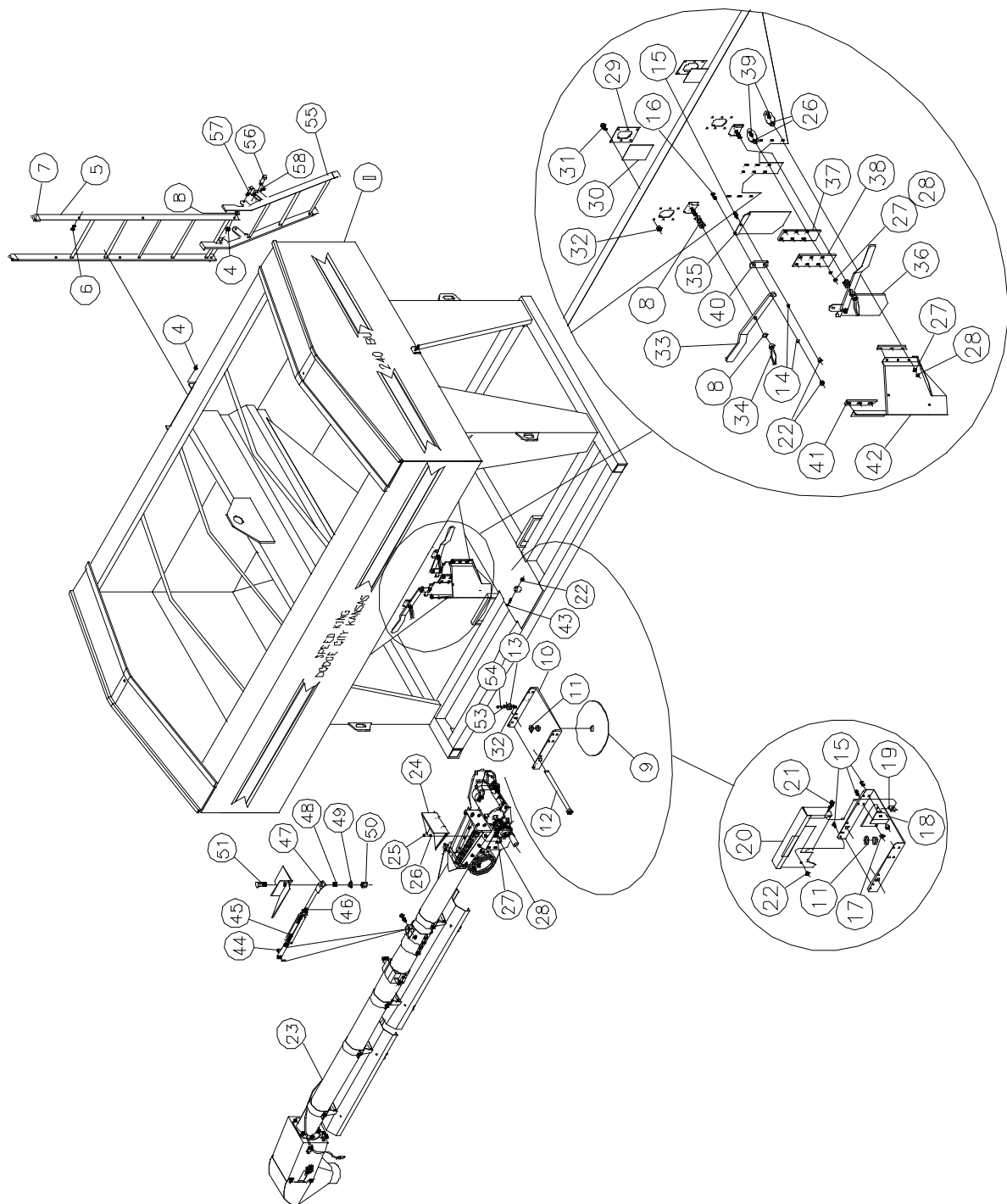
Seed Tender 160

Tank - Gas

Item	Qty	Part No.	Description	Item	Qty	Part No.	Description
1	1	82313800	Tank w/Frame	34	2	337352	Handle Nut 1/2"-13 x 4 1/2"
2				35	1	17940800	Hopper Door Left
3				36	1	17941600	Hopper Door Right
4	6	331363	Nylock Nut 1/2"	37	1	17910100	Hopper Door Back Plate
5	1	82322900	Ladder 6'	38	1	17919200	Hopper Door Front Plate
6	4	01180900	HHCS 1/2" x 1 1/4"	39	12	01047000	Carriage Bolt 5/16" x 1"
7	4	00716100	Vinyl Cap	40	2	17961400	Linkage Plate
8	12	330159	Flat Washer 1/2"	41	2	17909300	Spout Back Plate
9	1	570630	Plastic Wear Plate	42	1	82314600	Spout
10	1	82114000	Pivot Base	43	1	331884	HHCS 3/8" x 2 1/2"
11	1	332569	Machine Bushing 1 7/8" x 1 1/4" x 10 ga	44	1	17287400	Turnbuckle Pin
12	1	967638	Pivot Base Shaft	45	1	06814800	Turnbuckle 1" x 8 3/4"
13	1	153478	Lock Bushing	46	1	332288	Jam Nut 1"
14	1	62605100	Belt Guard	47	1	82527300	Turnbuckle Bracket
15	2	01017300	HHCS 3/8" x 1"	48	1	605220	Bushing 1 1/4" x 1 x 1/2" HS
16	1	330837	Nylock Nut 3/8"	49	1	330407	Flat Washer 1"
17	1	334847	Wing Nut 3/8"	50	1	330597	Nylock Nut 1"
18	1	330043	Lock Washer 3/8"	51	1	62772900	Engine Assembly Electric Start
19	2	01158500	HHCS 3/8" x 1 1/4"		1	62936000	Engine Assembly Units with remote
20				52	1	01429000	Battery Box Group 24
21	1	01172600	HHCS 1" x 2 1/2"	53	4	335448	HHCS 5/16 x 1 1/2"
22	4	149393	Bushing 1/2" x 3/8" x 5/16"	54	1	62787700	Power Lead Cable
23	1	62760400	Head & Tail 15' Tube w/Wind Guards (Shown)	55	1	62774500	Solenoid Ground Wire
	1	62894100	Telescoping Tube	56	1	62782800	Battery Cable Positive
24	1	82099300	Tail Hopper	57	2	01010800	HHCS 5/16" x 1"
25	4	01144500	HHCS 5/16" x 3/4"	58	1	03752300	V-Belt B-44
26	22	330852	Flat Washer 5/16"	59	2	02016400	Flat Washer 1/4"
27	22	330845	Lock Washer 5/16"	60	1	02393700	HHCS 1/4" x 2 1/4"
28	22	330811	Hex Nut 5/16"	61	2	01145200	HHCS 3/8" x 3/4"
29	2	262170	Window Back Plate	62	1	20670600	Battery Mount Plate
30	2	571315	Plastic Window	63	1	970137	Extension Ladder
31	12	01057900	HHCS 1/4" x 3/4"	64	1	609255	Clevis Pin 1/2" x 1 3/8"
32	13	330522	Nylock Nut 1/4"	65	2	01147800	HHCS 1/2" x 1 1/2"
33	2	17960600	Handle	66	1	330928	Klik Pin 3/16"
						03824000	Tarp 160 Seed Tender
						03962800	Remote Receiver
						03963600	Remote Transmitter



Seed Tender 240 Tank - Electric



Seed Tender 240

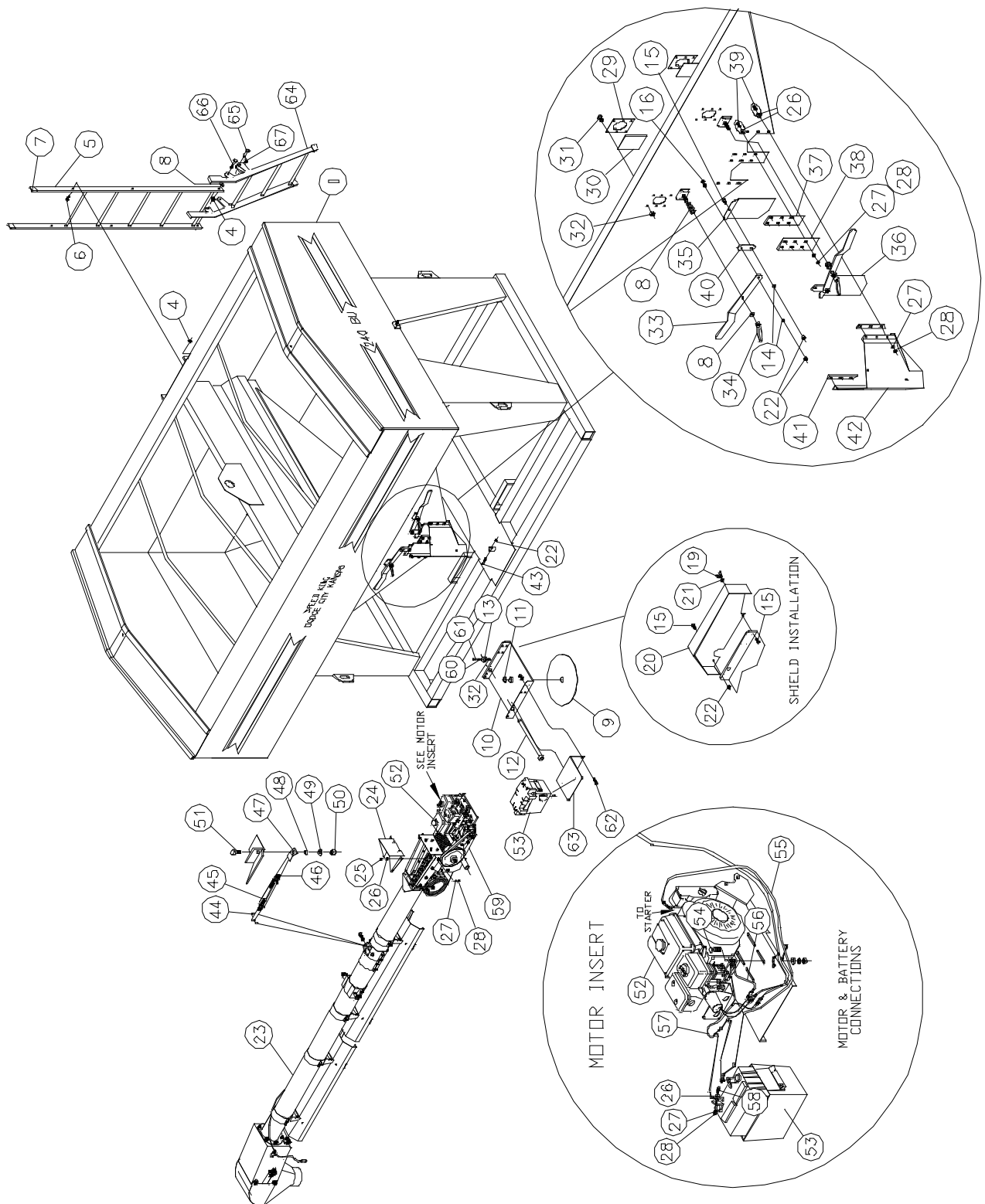
Tank - Electric

Item	Qty	Part No.	Description
1	1	82356700	Tank w/Frame
2			
3			
4	6	331363	Nylock Nut 1/2"
5	1	82470600	Ladder 8'
6	4	01180900	HHCS 1/2" x 1 1/4"
7	4	00716100	Vinyl Cap
8	12	330159	Flat Washer 1/2"
9	1	570630	Plastic Wear Plate
10	1	82114000	Pivot Base
11	1	332569	Machine Bushing 1 7/8" x 1 1/4" x 10 ga
12	1	967638	Pivot Base Shaft
13	1	153478	Lock Bushing
14	4	149393	Bushing 1/2" x 3/8" x 5/16"
15	5	01017300	HHCS 3/8" x 1"
16	2	01158500	HHCS 3/8" x 1 1/4"
17	5	330035	Hex Nut 3/8"
18	1	17306200	Guard Bracket
19	1	01574300	Clip Nut 5/16" U-type
20	1	62382700	Chain Guard
21	1	01489400	Thumb Screw 5/16" x 3/4"
22	6	330837	Nylock Nut 3/8"
23	1	62762000	Head and Tail 15' Tube w/Wind Guards
24	1	82099300	Tail Hopper
25	4	01144500	HHCS 5/16" x 3/4"
26	16	330852	Flat Washer 5/16"
27	18	330845	Lock Washer 5/16"
28	18	330811	Hex Nut 5/16"

Item	Qty	Part No.	Description
29	2	262170	Window Back Plate
30	2	571315	Plastic Window
31	12	01057900	HHCS 1/4" x 3/4"
32	13	330522	Nylock Nut 1/4"
33	2	17960600	Handle
34	2	337352	Handle Nut 1/2"-13 x 4 1/2"
35	1	17940800	Hopper
36	1	17941600	Hopper Door Right
37	1	17910100	Hopper Door Back Plate
38	1	17919200	Hopper Door Front Plate
39	12	01047000	Carriage Bolt 5/16" x 1"
40	2	17961400	Linkage Plate
41	2	17909300	Spout Back Plate
42	1	82568700	Spout
43	1	331884	HHCS 3/8" x 2 1/2"
44	1	18273300	Turnbuckle Pin
45	1	06814800	Turnbuckle 1" x 8 3/4"
46	1	332288	Jam Nut 1"
47	1	82527300	Turnbuckle Bracket
48	1	605220	Bushing 1 1/4" x 1 x 1/2" HS
49	1	330407	Flat Washer 1"
50	1	330597	Nylock Nut 1"
51	1	01172600	HHCS 1" x 2 1/2"
52			
53	2	02016400	Flat Washer 1/4"
54	1	02393700	HHCS 1/4" x 2 1/4"
55	1	970137	Extension Ladder
56	1	609255	Clevis Pin 1/2" x 1 3/8"
57	2	01147800	HHCS 1/2" x 1 1/2"
58	1	330928	Klik Pin 3/16"

03825700 Tarp 240 Seed Tender

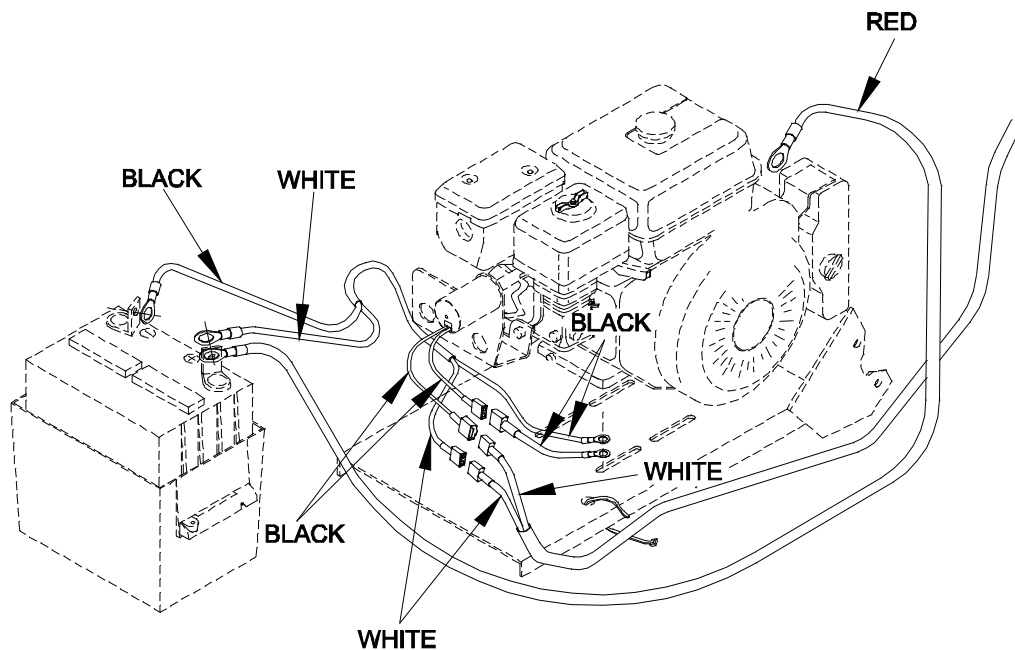
Seed Tender 240 Tank - Gas



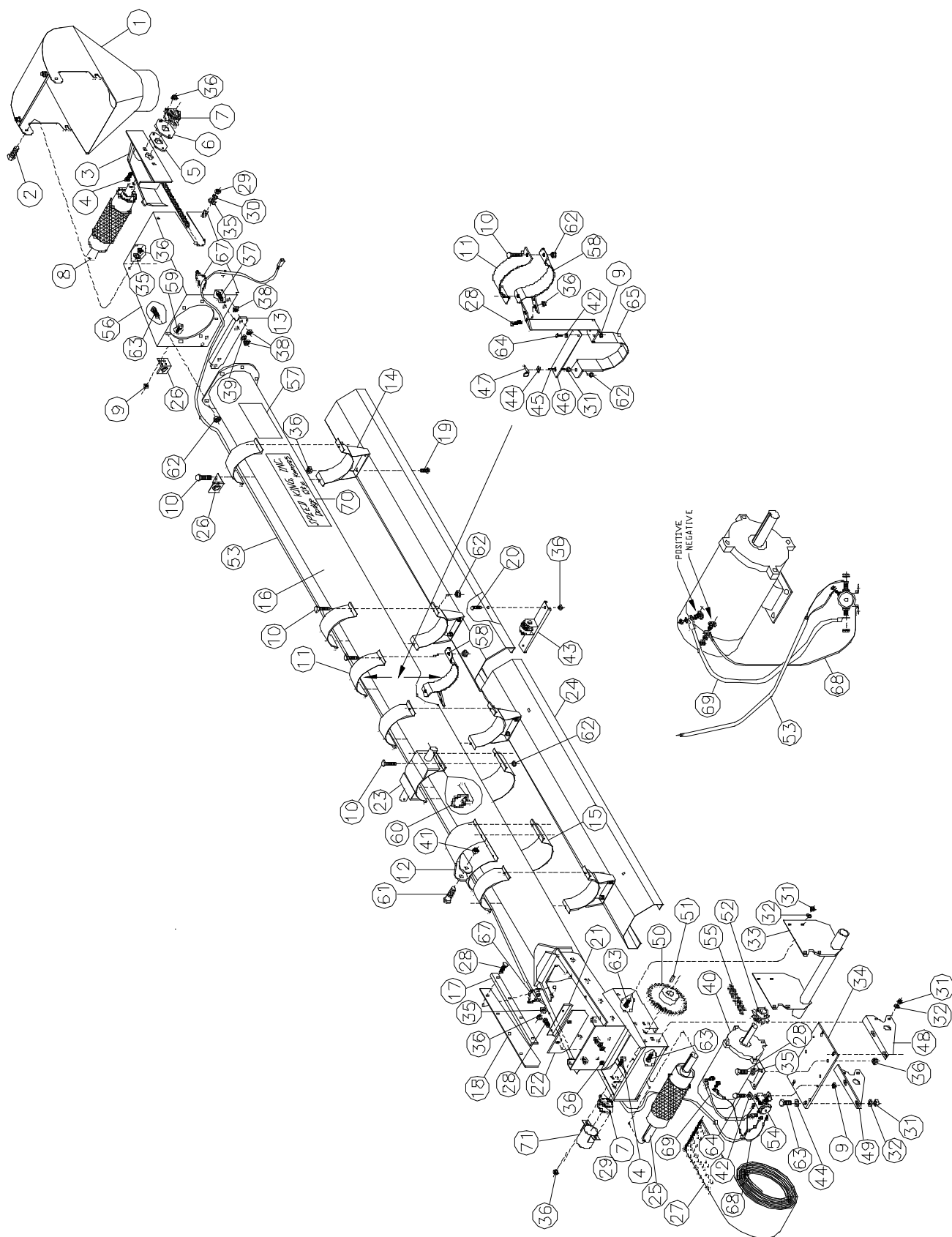
Seed Tender 240 Tank - Gas

Item	Qty	Part No.	Description	Item	Qty	Part No.	Description
1	1	82356700	Tank w/Frame	34	2	337352	Handle Nut 1/2"-13 x 4 1/2"
2				35	1	17940800	Hopper
3				36	1	17941600	Hopper Door Right
4	6	331363	Nylock Nut 1/2"	37	1	17910100	Hopper Door Back Plate
5	1	82470600	Ladder 8'	38	1	17919200	Hopper Door Front Plate
6	4	01180900	HHCS 1/2" x 1 1/4"	39	12	01047000	Carriage Bolt 5/16" x 1"
7	4	00716100	Vinyl Cap	40	2	17961400	Linkage Plate
8	12	330159	Flat Washer 1/2"	41	2	17909300	Spout Back Plate
9	1	570630	Plastic Wear Plate	42	1	82568700	Spout
10	1	82114000	Pivot Base	43	1	331884	HHCS 3/8" x 2 1/2"
11	1	332569	Machine Bushing	44	1	18273300	Turnbuckle Pin
			1 7/8" x 1 1/4" x 10 ga	45	1	06814800	Turnbuckle 1" x 8 3/4"
12	1	967638	Pivot Base Shaft	46	1	332288	Jam Nut 1"
13	1	153478	Lock Bushing	47	1	82527300	Turnbuckle Bracket
14	4	149393	Bushing 1/2" x 3/8" x 5/16"	48	1	605220	Bushing 1 1/4" x 1 x 1/2" HS
15	4	01017300	HHCS 3/8" x 1"	49	1	330407	Flat Washer 1"
16	2	01158500	HHCS 3/8" x 1 1/4"	50	1	330597	Nylock Nut 1"
17	5	330035	Hex Nut 3/8"	51	1	01172600	HHCS 1" x 2 1/2"
18				52	1	62772900	Engine Assembly
19	1	334847	Wing Nut 3/8"				Electric Start
20	1	62605100	Chain Guard	1	1	62936000	Engine Assembly
21	1	330043	Lock Washer 3/8"				Units with remote
22	6	330837	Nylock Nut 3/8"	53	1	01429000	Battery Box Group 24
23	1	62763800	Head and Tail 15' Tube	54	4	335448	HHCS 5/16" x 1 1/2"
			w/Wind Guards (Shown)	55	1	62787700	Power Lead Cable
	1	62895800	Telescoping Tube	56	1	62774500	Solenoid Ground Wire
24	1	82099300	Tail Hopper	57	1	62782800	Battery Cable Positive
25	4	01144500	HHCS 5/16" x 3/4"	58	2	01010800	HHCS 5/16" x 1"
26	22	330852	Flat Washer 5/16"	59	1	03752300	V-Belt B-44
27	22	330845	Lock Washer 5/16"	60	2	02016400	Flat Washer 1/4"
28	22	330811	Hex Nut 5/16"	61	1	02393700	HHCS 1/4" x 2 1/4"
29	2	262170	Window Back Plate	62	2	01145200	HHCS 3/8" x 3/4"
30	2	571315	Plastic Window	63	1	20670600	Battery Mount Plate
31	12	01057900	HHCS 1/4" x 3/4"	64	1	970137	Extension Ladder
32	13	330522	Nylock Nut 1/4"	65	1	609255	Clevis Pin 1/2" x 1 3/8"
33	2	17960600	Handle	66	2	01147800	HHCS 1/2" x 1 1/2"
				67	1	330928	Klik Pin 3/16"

03825700 Tarp 240 Seed Tender
03962800 Remote Receiver
03963600 Remote Transmitter



Seed Tender 160 & 240 Head and Tail - Electric



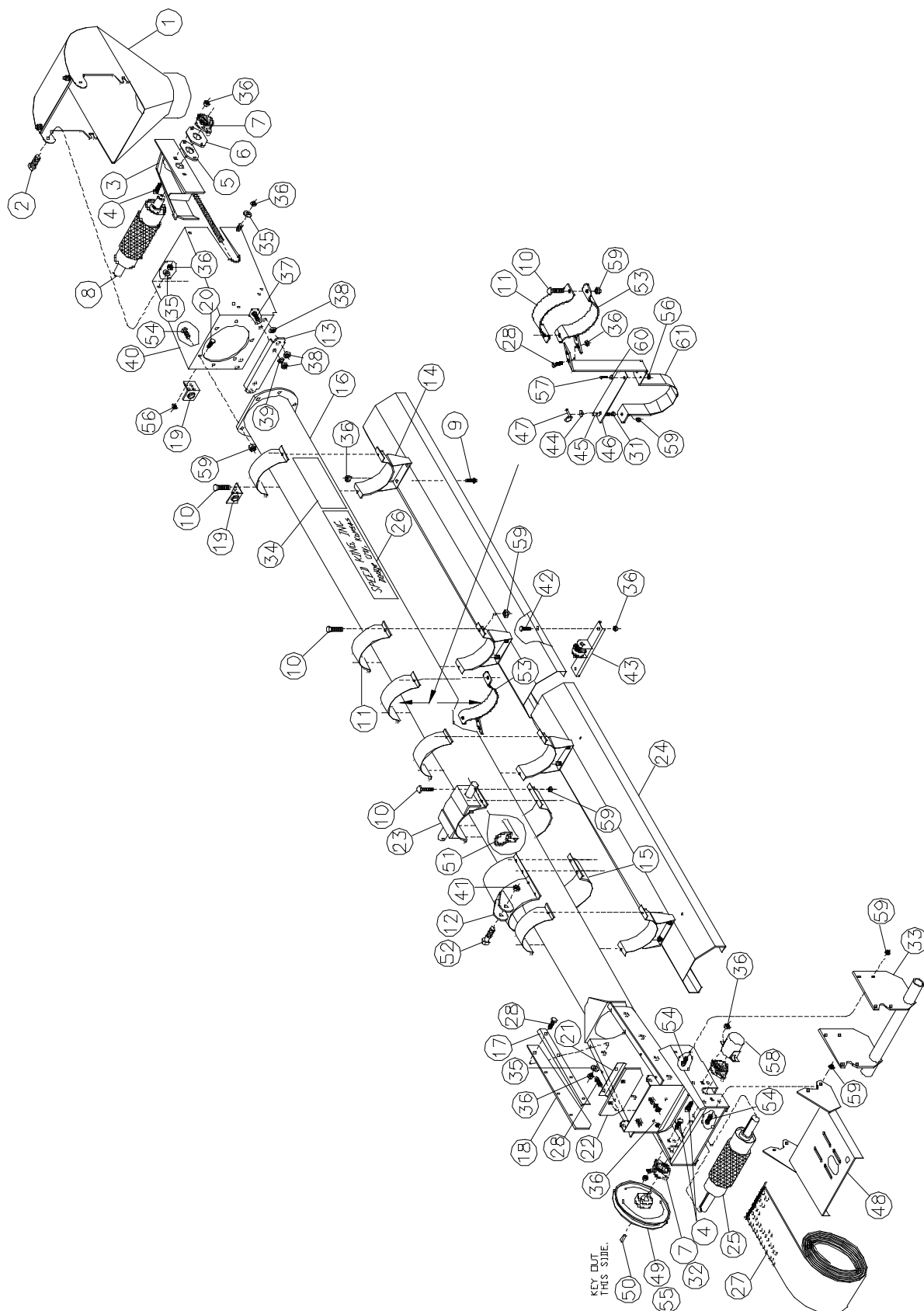
Seed Tender 160 & 240 Head and Tail - Electric

#62759600 Head and Tail Assembly Electric

Item	Qty	Part No.	Description
1	1	63198600	Spout w/lining
2	2	01144500	HHCS 5/16" x 3/4"
3	1	961714	Take-up Bar Right
	1	961565	Take-up Bar Left
4	8	01261700	Carriage Bolt 5/16" x 1 1/2"
5	2	151746	Head Bearing Slide Inner
6	2	151753	Head Bearing Slide Outer
7	4	03001500	Bearing 1"
8	1	62212600	Head Lagged Roller
9	4	330522	Nylock Nut 1/4"
10	22	01158500	HHCS 3/8" x 1 1/4"
11	5	16577910	Half Band 600 x 2"
12	1	82358300	Turn Buckle Half Band
13	1	16497000	Adjustment Mount Plate
14	4	82489600	Belt Cover Mount
15	3	16578710	Half Band 4"
16	1	82421900	Tail 15' Tube
17	2	16427700	Skirt Board Plate
18	2	16431900	Skirt Board Side
19	8	334409	Carriage Bolt 5/16" x 3/4"
20	2	333542	HHCS 5/16" x 5/8"
21	1	16428500	Skirt Board Plate
22	1	16432700	Skirt Board Back
23	1	82117300	Tube Transport Lock
24	2	20489100	Belt Guard - 89"
25	1	62705900	Tail Lagged Roller
26	3	62213400	Head Rope Guide
27	1	62850300	Belt 8" x 35'-9 1/2" -15' Tube
28	15	01010800	HHCS 5/16" x 1"
29	2	01162700	Zerk 1/4-28 x 45°
30			
31	2	330035	Hex Nut 3/8"
32	1	330043	Lock Washer 3/8"
33	1	82111600	Tube Mount
34	1	17227000	Motor Mount Plate
35	22	330852	Flat Washer 5/16"

Item	Qty	Part No.	Description
36	33	331611	Hex Nylock Nut 5/16"
37	2	335240	HHCS 1/2" x 1 3/4"
38	6	330134	Hex Nut 1/2"
39	2	330142	Lock Washer 1/2"
40	1	03648300	Electric Motor 12 Volt 1 hp
41	1	331363	Hex Nylock Nut 1/2"
42	4	02016400	Flat Washer 1/4"
43	4	62751300	Roller Base
44	6	330894	Flat Washer 3/8"
45	1	16864100	Spout Pin Shaft
46	1	614321	Spout Strap
47	1	330928	Klik Pin 3/16"
48	1	17230400	Mount Plate Right
49	1	17229600	Mount Plate Left
50	1	84723600	Sprocket #40 36 Tooth
51	1	17375700	Key 1/4" x 1"
52	1	03722600	Sprocket #40 11 Tooth
53	1	62379300	Tube Cable Assembly
54	1	03251600	Solenoid Switch
55	1	62371000	Chain #40 x 56 Links
56	1	82353400	Head Frame
57	1	606335	Decal Belt Training
58	1	81865800	Guard Half Band
59	2	01150200	HHCS 1/4" x 1/2"
60	1	336974	Klik Pin 5/16"
61	1	335422	HHCS 1/2" x 2 1/2"
62	44	330837	Nylock Nut 3/8"
63	22	01017300	HHCS 3/8" x 1"
64	4	331835	HHCS 1/4" x 1"
65	1	244368	Flexible Tube Strap
66			
67	2	571299	Cable Tie 8 1/2"
68	1	62378500	Ground Wire
69	1	62377700	Positive Connector Calbe
70	2	01202100	Decal Letters
71	1	82502600	Shaft End Guard

Seed Tender 160 & 240 Head and Tail - Gas



Seed Tender 160 & 240

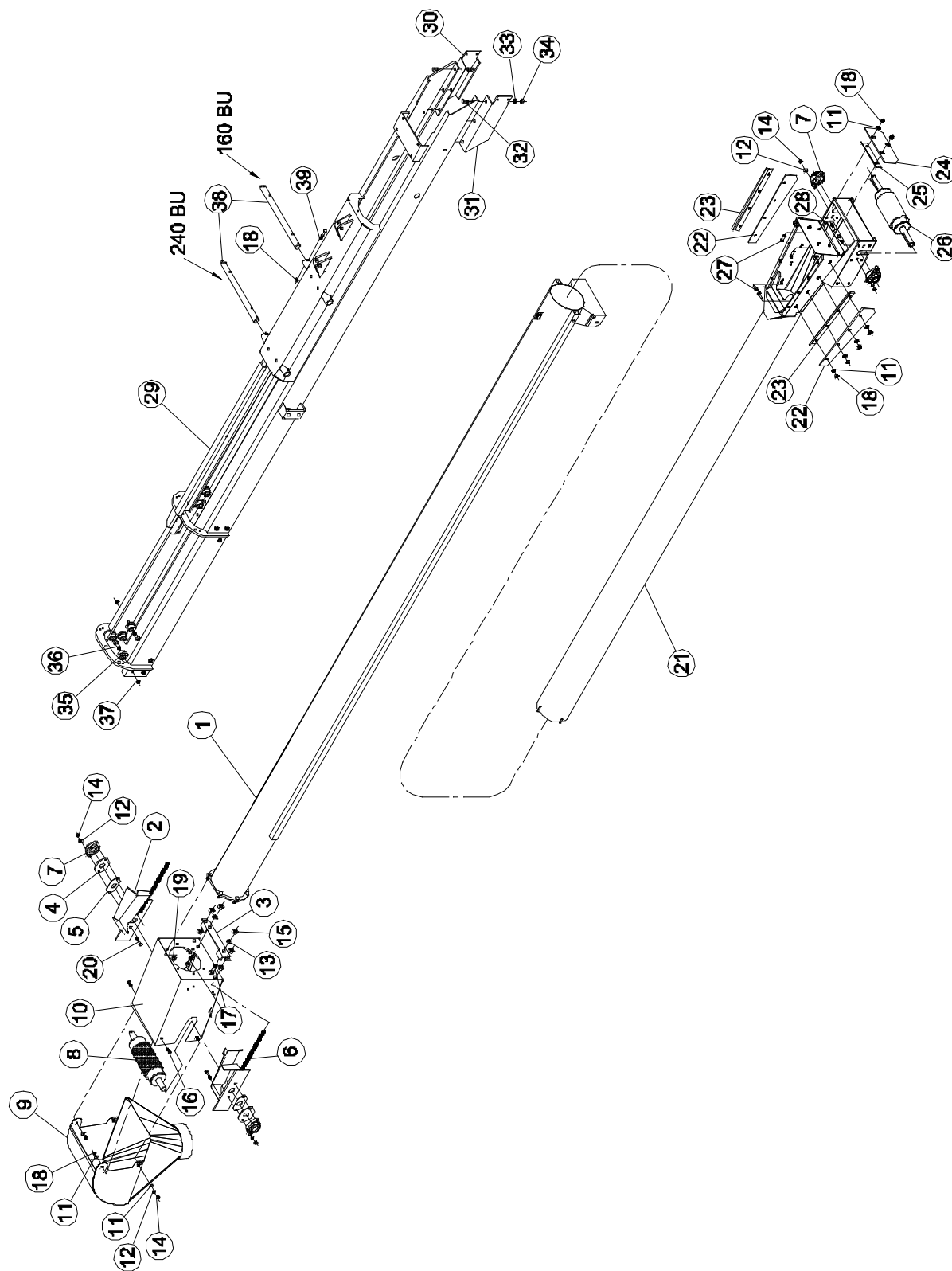
Head and Tail - Gas

#62760400 Head and Tail Assembly Gas

Item	Qty	Part No.	Description
1	1	63198600	Spout w/Lining
2	2	01144500	HHCS 5/16" x 3/4"
3	1	961714	Take-up Bar Right
	1	961565	Take-up Bar Left
4	8	01261700	Carriage Bolt 5/16" x 1 1/2"
5	2	151746	Head Bearing Slide Inner
6	2	151753	Head Bearing Slide Outer
7	4	03001500	Bearing 1"
8	1	62212600	Head Lagged Roller
9	8	334409	Carriage Bolt 5/16" x 3/4"
10	22	01158500	HHCS 3/8" x 1 1/4"
11	5	16577910	Half Band 600 x 2"
12	1	82358300	Turn Buckle Half Band
13	1	16497000	Adjustment Mount Plate
14	4	82489600	Belt Cover Mount
15	3	16578710	Half Band 4"
16	1	82421900	Tail 15' Tube
17	2	16427700	Skirt Board Plate
18	2	16431900	Skirt Board Side
19	3	62213400	Head Rope Guide Assembly
20	2	01150200	HHCS 1/4" x 1/2"
21	1	16428500	Skirt Board Plate
22	1	16432700	Skirt Board Back
23	1	82117300	Tube Transport Lock
24	2	20489100	Belt Guard - 89"
25	1	62705900	Tail Lagged Roller
26	2	01202100	Decal Letters
27	1	62850300	Belt 8" x 35'-9 1/2" 15' Tube
28	10	01010800	HHCS 5/16" x 1"
29			
30			
31	1	330035	Hex Nut 3/8"

Item	Qty	Part No.	Description
32	2	01162700	Zerk 1/4-28 x 45°
33	1	82111600	Tube Mount
34	1	606335	Decal Belt Training
35	22	330852	Flat Washer 5/16"
36	39	331611	Hex Nylock Nut 5/16"
37	2	335240	HHCS 1/2" x 1 3/4"
38	6	330134	Hex Nut 1/2"
39	2	330142	Lock Washer 1/2"
40	1	82353400	Head Frame
41	1	331363	Hex Nylock Nut 1/2"
42	2	333542	HHCS 5/16 x 5/8"
43	1	62751300	Roller Base
44	2	330894	Flat Washer 3/8"
45	1	16864100	Spout Pin Shaft
46	1	614321	Spout Strap
47	1	330928	Klik Pin 3/16"
48	1	82143900	Motor Mount Gas w/Electric Start
49	1	04255600	Sheave 8 x 1 1B
50	1	17375700	Key 1/4" x 1"
51	1	336974	Klik Pin 5/16"
52	1	335422	HHCS 1/2" x 2 1/2"
53	1	81865800	Guard Half Band
54	18	01017300	HHCS 3/8" x 1"
55	4	01139500	Set Screw 3/8-16 x 3/8 Star
56	4	330522	Hex Nylock 1/4"
57	2	01057900	HHCS 1/4" x 3/4"
58	1	82502600	Shaft End Guard
59	37	330837	Nylock Nut 3/8"
60	2	02016400	Flat Washer 1/4"
61	1	244368	Flexible Spout Strap

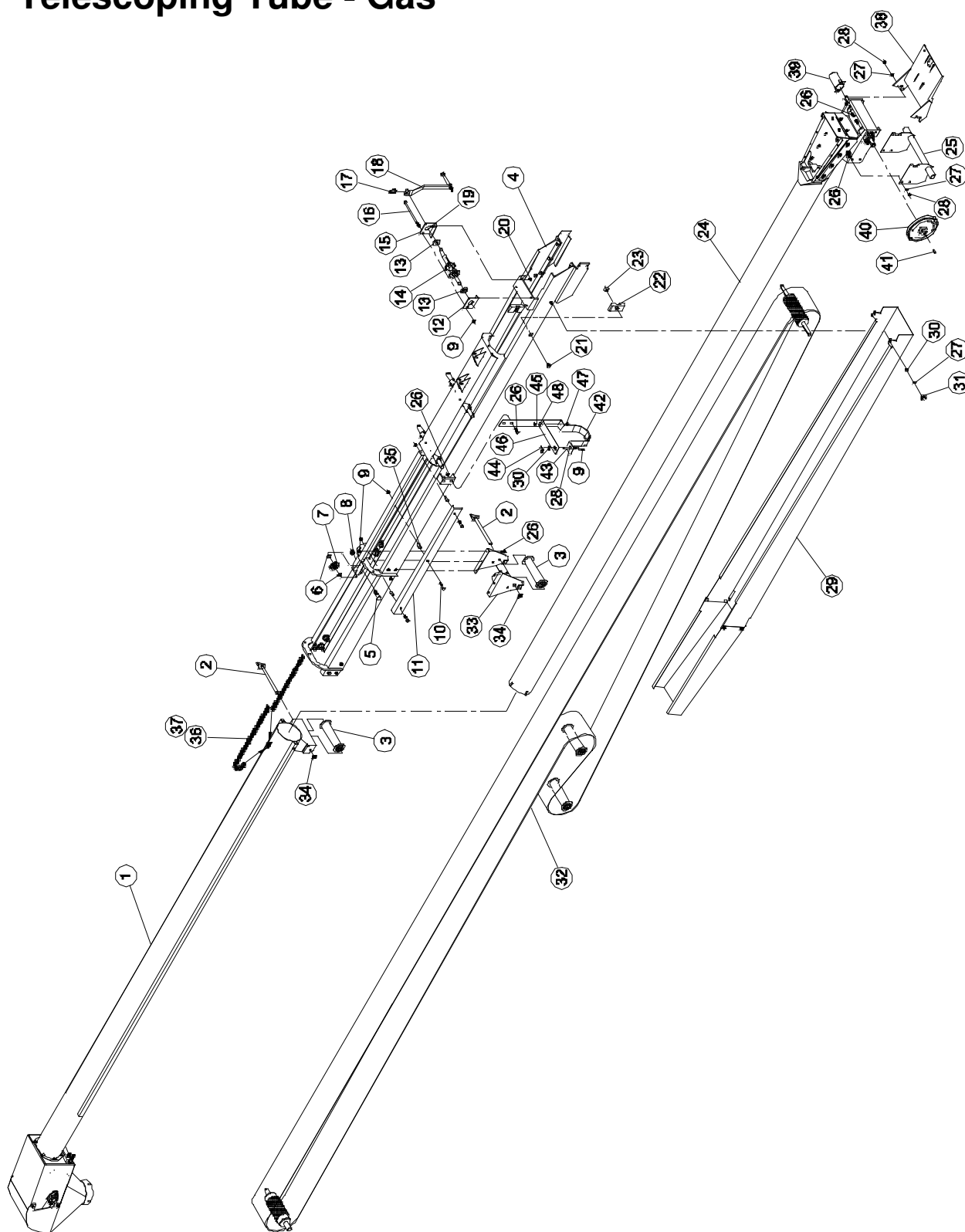
Seed Tender 160 & 240 Telescoping Tube - Gas



Seed Tender 160 & 240 Telescoping Tube - Gas

Item	Qty	Part No.	Description	Item	Qty	Part No.	Description
1	1	82616400	Upper Tube	25	1	16428500	Skirtboard Back up Plate
2	1	961714	Take-up Bar Right	26	1	62705900	Lagged Roller 3 x 16 3/4
3	1	16497000	Take-up Bracket	27	10	01010800	HHCS 5/16" x 1"
4	2	151753	Bearing Slide Outer	28	4	335448	HHCS 5/16" x 1 1/2"
5	2	151746	Bearing Slide Inner	29	1	82657800	Support Frame
6	1	961565	Take-up Bar Left	30	1	20945200	Lower Support Right
7	4	03001500	Bearing 1" Flange	31	1	20946000	Lower Support Left
8	1	62212600	Lagged Roller 3 x 14	32	6	01017300	HHCS 3/8" x 1"
9	1	63198600	Spout w/Lining	33	6	330043	Lock Washer 3/8"
10	1	82353400	Head Frame	34	6	330035	Hex Nut 3/8"
11	14	330852	Flat Washer 5/16"	35	12	20947800	Nylon Roller
12	10	330845	Lock Washer 5/16"	36	12	03866100	Shoulder Screw 3/8" x 1"
13	2	330142	Lock Washer 1/2"	37	12	330837	Nylock 3/8"
14	10	330811	Hex Nut 5/16"	38	1	312504	Shaft -160 Bu
15	6	330134	Hex Nut 1/2"		1	312496	Shaft -240 Bu
16	2	01144500	HHCS 5/16" x 3/4"	39	2	01152800	HHCS 5/16" x 1 3/4"
17	2	335240	HHCS 1/2" x 1 3/4"	40	2	01057900	HHCS 1/4" x 3/4"
18	14	331611	Nylock 5/16"	41	1	330894	Flat Washer 3/8"
19	6	330837	Nylock 3/8"	42	1	614321	Spout Plate
20	4	335448	HHCS 5/16" x 1 1/2"	43	1	16864100	Spout Pin Shaft
21	1	82640400	Lower Tube	44	1	330928	Klik Pin 3/16"
22	2	16431900	Skirtboard Side	45	2	330522	Nylock 1/4"
23	2	16427700	Skirtboard Back up Plate	46	2	02016400	Flat Washer 1/4"
24	1	16432700	Skirtboard Front	47	1	244384	Flexible Spout Hanger

Seed Tender 160 & 240 Telescoping Tube - Gas

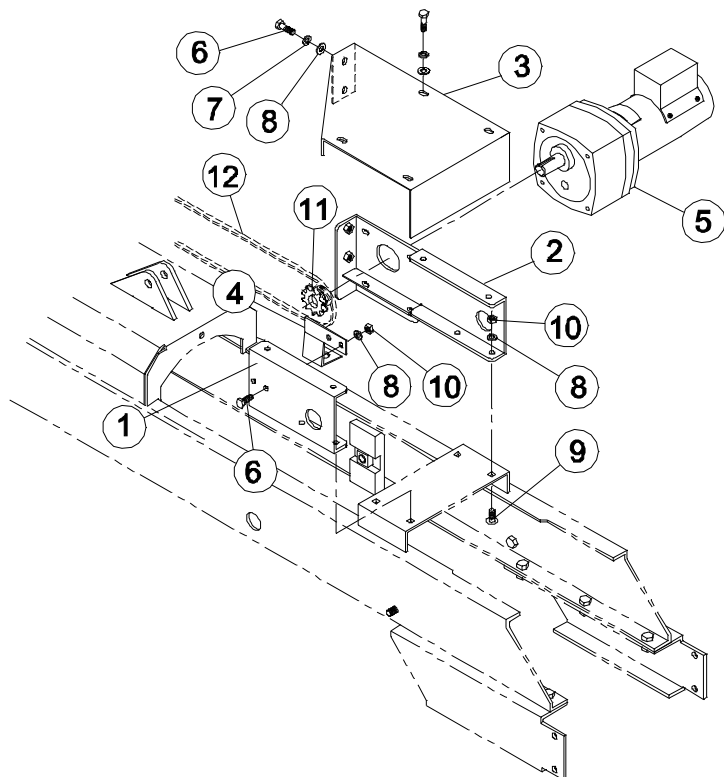


Seed Tender 160 & 240 Telescoping Tube - Gas

Item	Qty	Part No.	Description
1	1	62884200	Top Tube
2	2	82638800	Roller Shaft
3	2	62891700	S-Wrap Roller
4	1	62924600	Support Frame 160 Bu
	1	62925300	Support Frame 240 Bu
5	1	01071000	HHCS 5/8" x 2"
6	2	330720	Machine Bushing 5/8" x 1 1/8" x 14 ga
7	1	430603	Sprocket #40 17T -5/8" B
8	1	01572700	Nylock 5/8"
9	13	330837	Nylock 3/8"
10	3	335877	HHCS 3/8" x 1 3/4"
11	1	20982500	Chain Guard
12	1	20984100	Chain Bracket Left
13	2	20988200	Nylon Bushing
14	1	62888300	Sprocket & Shaft
15	1	20985800	Chain Bracket Right
16	1	337915	HHCS 3/8" x 8 1/2"
17	1	338392	Klik Pin 1/4" w/1 3/4" Ring
18	1	62889100	Handle
19	4	331611	Nylock 5/16"
20	4	334409	Carriage Bolt 5/16" x 3/4"
21	2	03871100	Screw 1/2" x 3/4" Flat Head Socket

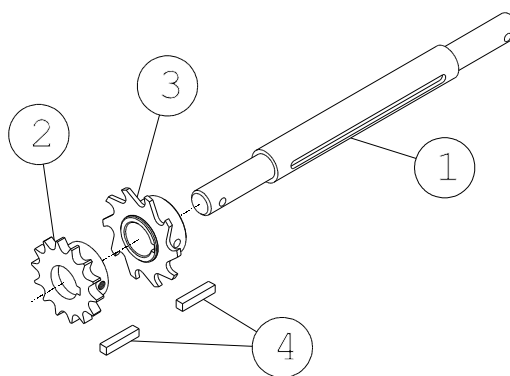
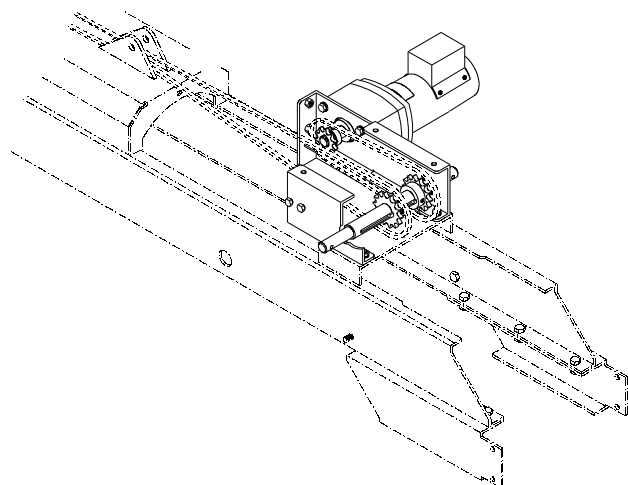
Item	Qty	Part No.	Description
22	2	20972600	Stop Slide
23	2	332197	Square Nut 1/2"
24	1	62892500	Bottom Tube
25	1	82111600	Tube Mount
26	20	01017300	HHCS 3/8" x 1"
27	14	330043	Lock Washer 3/8"
28	12	330035	Hex Nut 3/8"
29	1	62890900	Wind Guard
30	3	330894	Flat Washer 3/8"
31	2	334847	Wing Nut 3/8"
32	1	62896600	Belt 8" x 47'-8 3/8"
33	1	62886700	Upper Roller Bracket
34	2	03869500	Retaining Ring 5/8" Self Locking
35	3	20863700	Chain Guard Bushing
36		709501	Chain #40 NP x 397 Links
37	2	434084	Chain Connector #40
38	1	82143900	Motor Mount Gas
39	1	80161300	Shaft End Guard
40	1	04255600	Sheave 8 x 1 1B
41	1	17375700	Key 1/4" x 1"
42	1	244384	Flexible Spout Hanger
43	1	16864100	Spout Pin Shaft
44	1	330928	Klik Pin 3/16"
45	2	01057900	HHCS 1/4" x 3/4"
46	1	614321	Spout Plate
47	2	330522	Nylock 1/4"
48	2	02016400	Flat Washer 1/4"

Seed Tender 160 & 240 Telescoping Tube



Electric Winch

Item	Qty	Part No.	Description
1	1	972034	Motor Mount
2	1	971986	Motor Mount -160
	1	971994	Motor Mount -240
3	1	972018	Cover -160
	1	972026	Cover -240
4	1	234641	Proximity Switch Mount
5	1	03881000	Motor 12V
6	8	01144500	HHCS 5/16" x 3/4"
7	8	330845	Lock Washer 5/16"
8	6	330852	Flat Washer 5/16"
9	4	01047000	Carriage Bolt 5/16" x 1"
10	6	330811	Hex Nut 5/16"
11	1	434225	Sprocket #40 10 Tooth
12	1	434217	Chain #40 x 42P -160
	1	434209	Chain #40 x 63P -240



Shaft & Sprocket Assembly #62888300

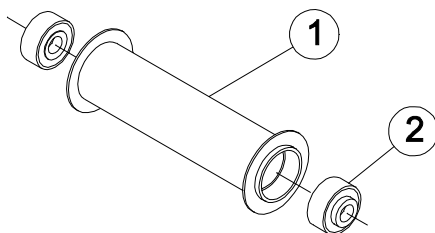
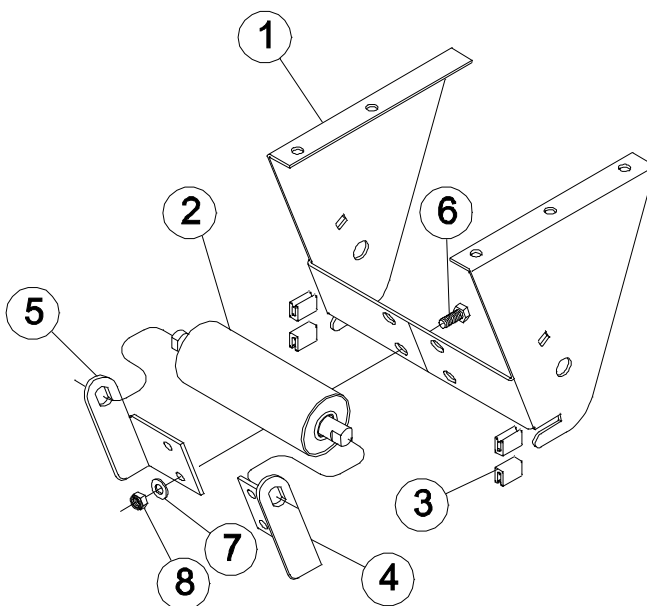
Item	Qty	Part No.	Description
1	1	20987400	Shaft
2	1	433037	Sprocket #40 17 Tooth
3	1	82635400	Sprocket & Hub 1" Bore
4	2	10490100	Key 1/4" x 1 1/4"

On units with electric winch option, 82635400 is not used. Replaced with 433037.

Seed Tender 160 & 240 Telescoping Tube

Upper Roller Bracket #62886700

Item	Qty	Part No.	Description
1	1	82633900	Upper Roller Mount
2	1	60190600	Roller Assembly 2" x 6"
3	4	20956900	Trim Lock
4	1	20953600	Roller Bracket Left
5	1	20959300	Roller Bracket Right
6	4	01144500	HHCS 5/16" x 3/4"
7	4	330852	Flat Washer 5/16"
8	4	331611	Nylock 5/16"

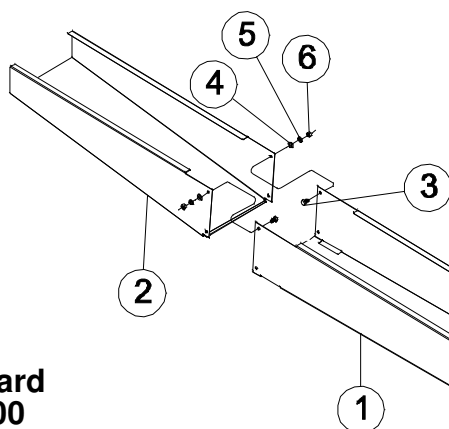
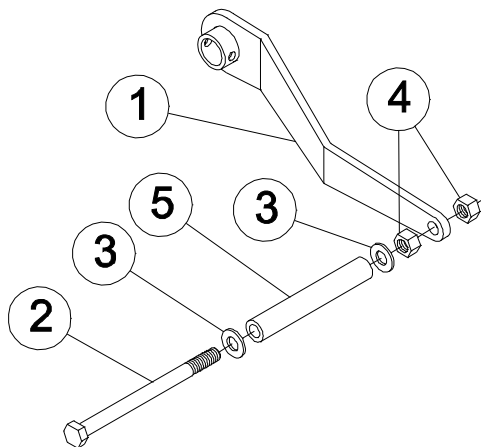


S-Wrap Roller w/Bearings #62891700

Item	Qty	Part No.	Description
1	1	82639600	S-Wrap Roller
2	2	401042	Bearing

Handle Assembly #62889100

Item	Qty	Part No.	Description
1	1	82637000	Handle
2	1	335430	HHCS 3/8" x 5"
3	2	330894	Flat Washer 3/8"
4	2	330035	Hex Nut 3/8"
5	1	20929200	Rubber Bushing

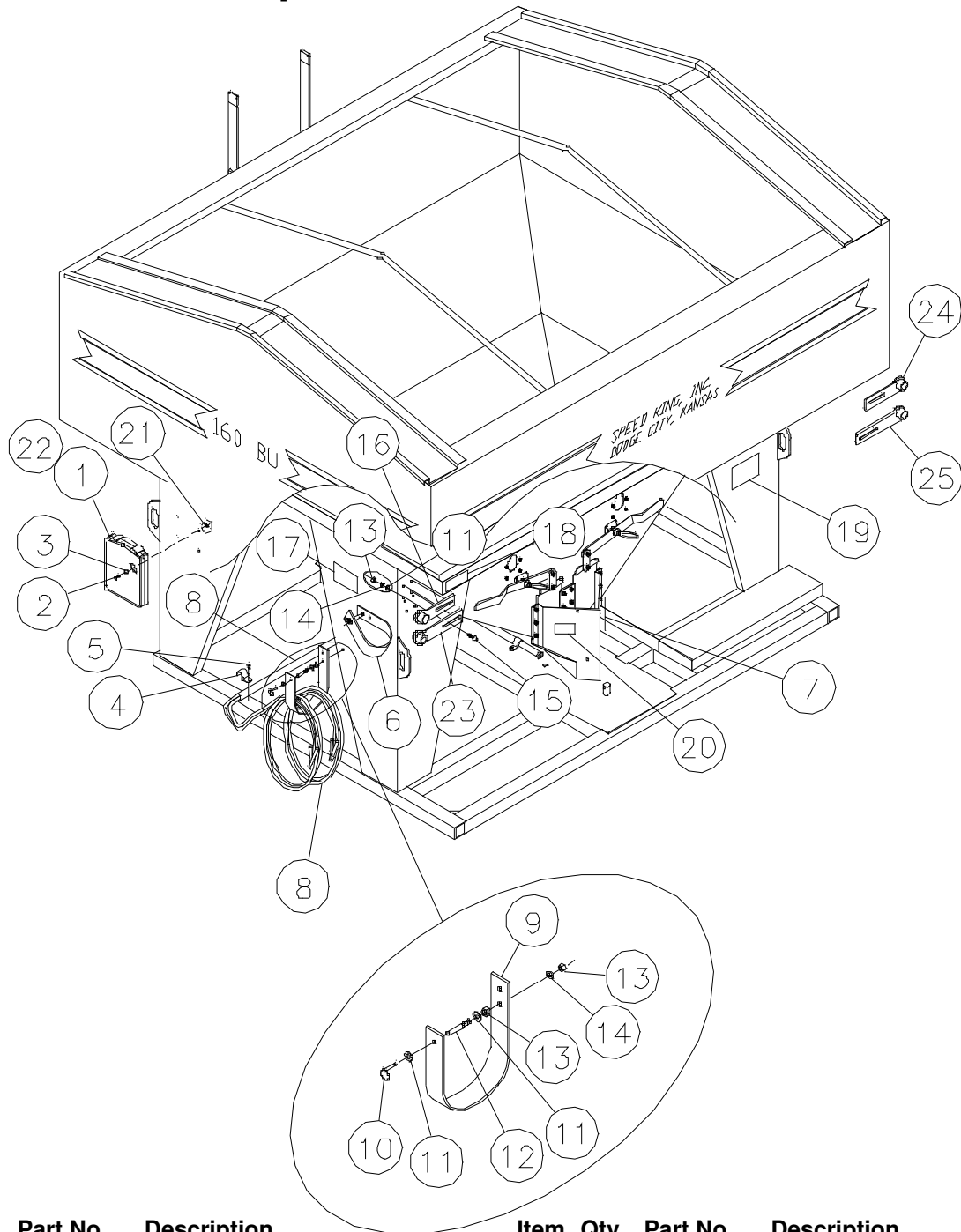


Wind Guard #62890900

Item	Qty	Part No.	Description
1	1	20973400	Lower Guard
2	1	20974200	Upper Guard
3	4	331546	HHCS 5/16" x 1/2"
4	4	330852	Flat Washer 5/16"
5	4	330845	Lock Washer 5/16"
6	4	330811	Hex Nut 5/16"

Seed Tender 160

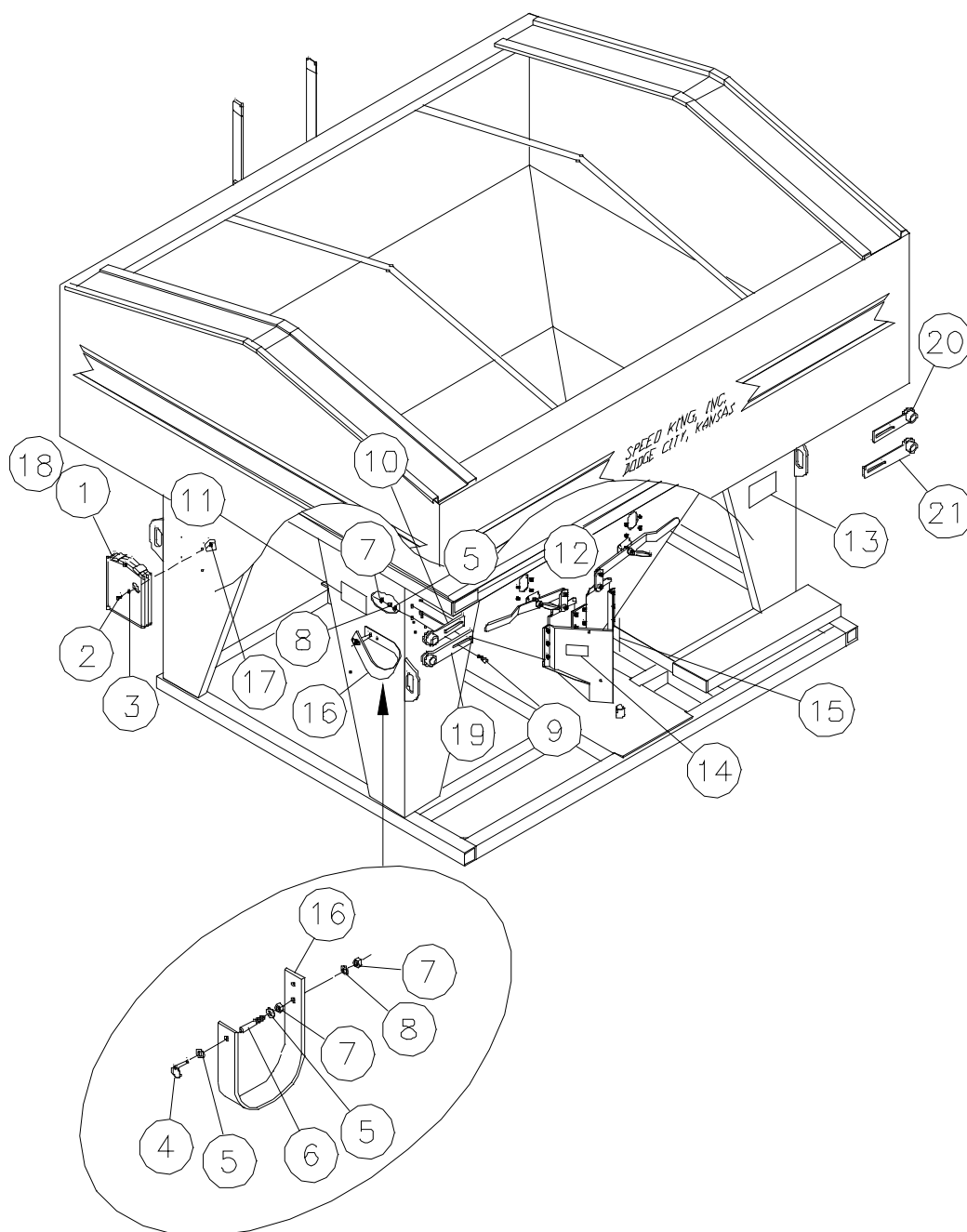
Cables & Tube Straps - Electric



Item	Qty	Part No.	Description	Item	Qty	Part No.	Description
1	1	607416	Manual Pak	14	8	330043	Lock Washer 3/8"
2	4	01057900	HHCS 1/4" x 3/4"	15	6	335919	Carriage Bolt 3/8" x 1 1/4"
3	4	02016400	Flat Washer 1/4"	16	1	971374	Transport Lock Top Right
4	2	03102100	Conduit Strap 1"	17	2	05325600	Decal Secure Tube w/strap
5	2	01200500	Screw 5/16" x 3/4 Self Tap	18	1	05315700	Decal Pinch Points
6	2	17634700	Safety Strap Long	19	1	05303300	Decal Caution
7	1	05328000	Decal Danger Hopper	20	1	05327200	Decal Warning Clean Out
8	1	62629100	Battery Cable Assembly	21	4	330522	Nylock Nut 1/4"
9	1	16865800	Safety Strap Short	22	1	17993700	Owners Manual
10	2	330928	Klik Pin 3/16"	23	1	971390	Transport Lock Bottom Right
11	10	330894	Flat Washer 3/8"	24	1	971382	Transport Lock Top Left
12	2	16864100	Pin 3/8" x 2 1/2"	24	1	971408	Transport Lock Bottom Left
13	10	330035	Hex Nut 3/8"				

Seed Tender 160

Cables & Tube Straps - Gas

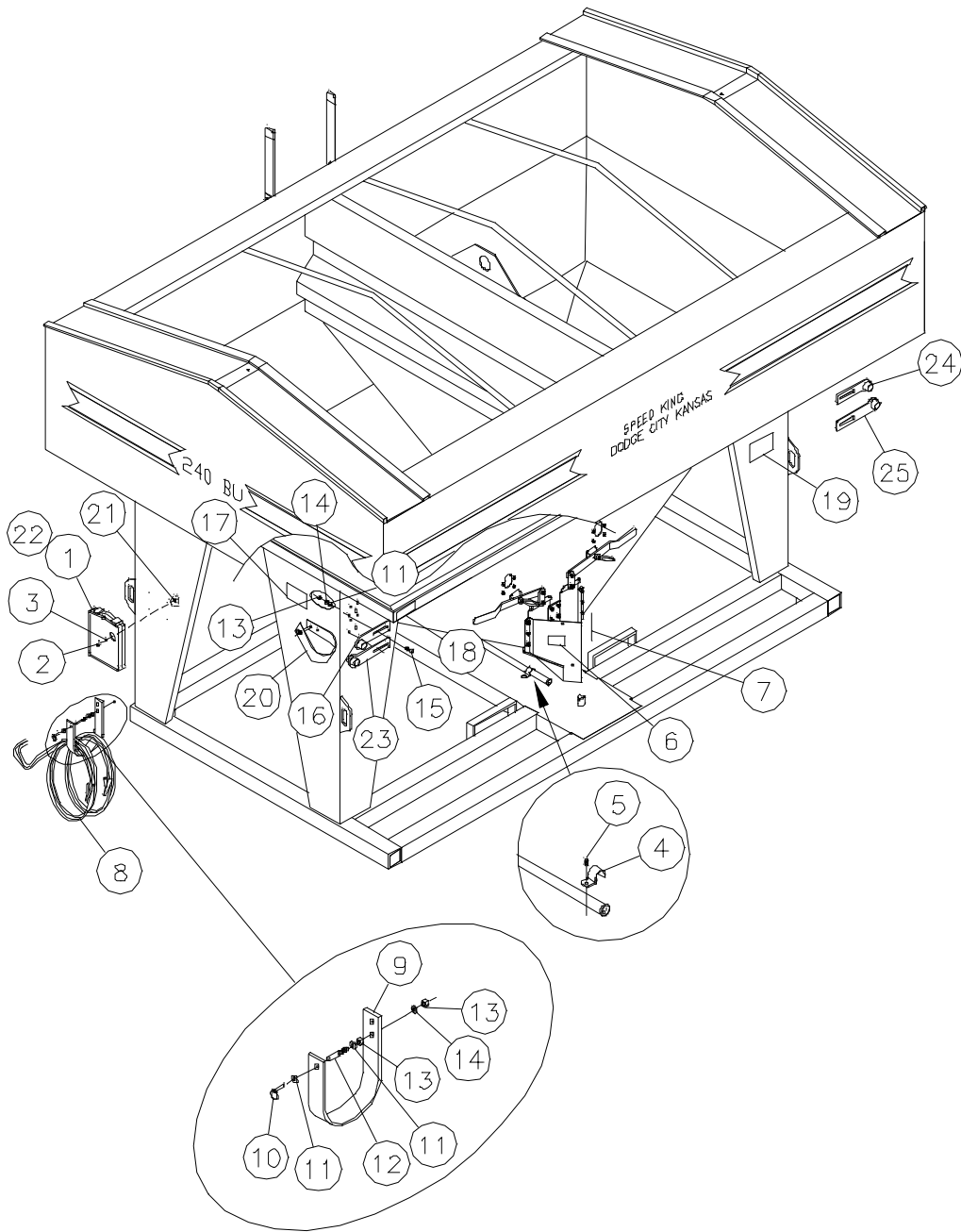


Item	Qty	Part No.	Description
1	1	607416	Manual Pak
2	4	01057900	HHCS 1/4" x 3/4"
3	4	02016400	Flat Washer 1/4"
4	1	330928	Klik Pin 3/16"
5	10	330894	Flat Washer 3/8"
6	2	16864100	Pin 3/8" x 2 1/2"
7	10	330035	Hex Nut 3/8"
8	8	330043	Lock Washer 3/8"
9	6	335919	Carriage Bolt 3/8" x 1 1/4"
10	1	971374	Transport Lock Top Right
11	2	05325600	Decal Secure Tube w/strap

Item	Qty	Part No.	Description
12	1	05315700	Decal Pinch Points
13	1	05303300	Decal Caution
14	1	05327200	Decal Warning Clean Out
15	1	05328000	Decal Danger Hopper
16	2	17634700	Safety Strap Long
17	4	330522	Nylock Nut 1/4"
18	1	17993700	Owners Manual
19	1	971390	Transport Lock Bottom Right
20	1	971382	Transport Lock Top Left
21	1	971408	Transport Lock Bottom Left

Seed Tender 240

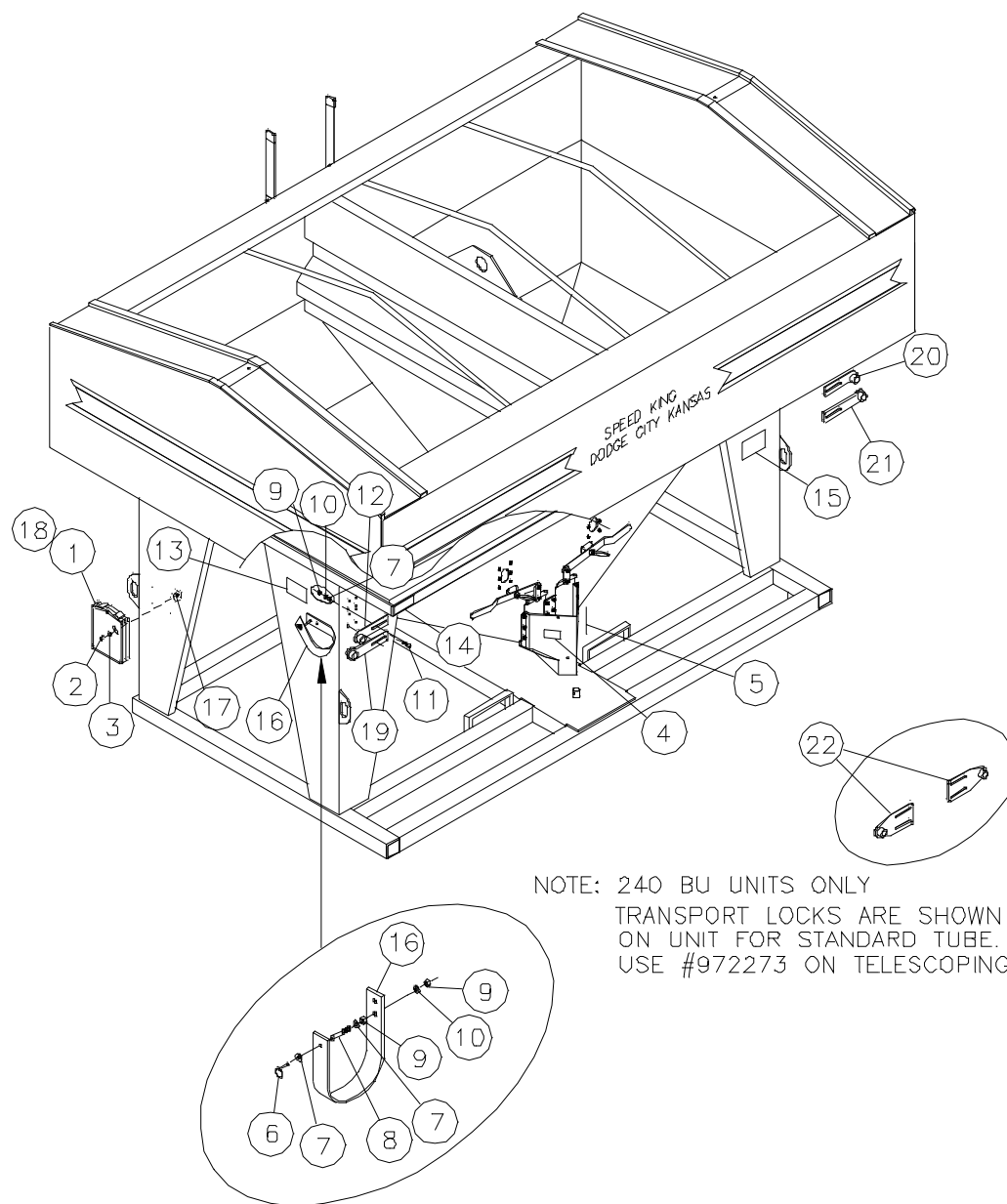
Cables & Tube Straps - Electric



Item	Qty	Part No.	Description	Item	Qty	Part No.	Description
1	1	607416	Manual Pak	13	10	330035	Hex Nut 3/8"
2	4	01057900	HHCS 1/4" x 3/4"	14	10	330043	Lock Washer 3/8"
3	4	02016400	Flat Washer 1/4"	15	6	335919	Carriage Bolt 3/8" x 1 1/4"
4	2	03102100	Conduit Strap 1"	16	1	971382	Transport Lock Top Right
5	2	01200500	Screw 5/16" x 3/4 Self Tap	17	2	05325600	Decal Secure Tube w/strap
6	1	05327200	Decal Warning Clean Out	18	2	05315700	Decal Pinch Points
7	1	05328000	Decal Danger Hopper	19	1	05303300	Decal Caution
8	1	62629100	Battery Cable Assembly	20	2	17634700	Safety Strap Long
9	1	16865800	Safety Strap Short	21	4	330522	Nylock Nut 1/4"
10	3	330928	Klik Pin 3/16"	22	1	17993700	Owners Manual
11	10	330894	Flat Washer 3/8"	23	1	971390	Transport Lock Bottom Right
12	3	16864100	Pin 3/8" x 2 1/2"	24	1	971374	Transport Lock Top Left
				25	1	971408	Transport Lock Bottom Left

Seed Tender 240

Cables & Tube Straps - Gas



NOTE: 240 BU UNITS ONLY
 TRANSPORT LOCKS ARE SHOWN
 ON UNIT FOR STANDARD TUBE.
 USE #972273 ON TELESCOPING TUBES.

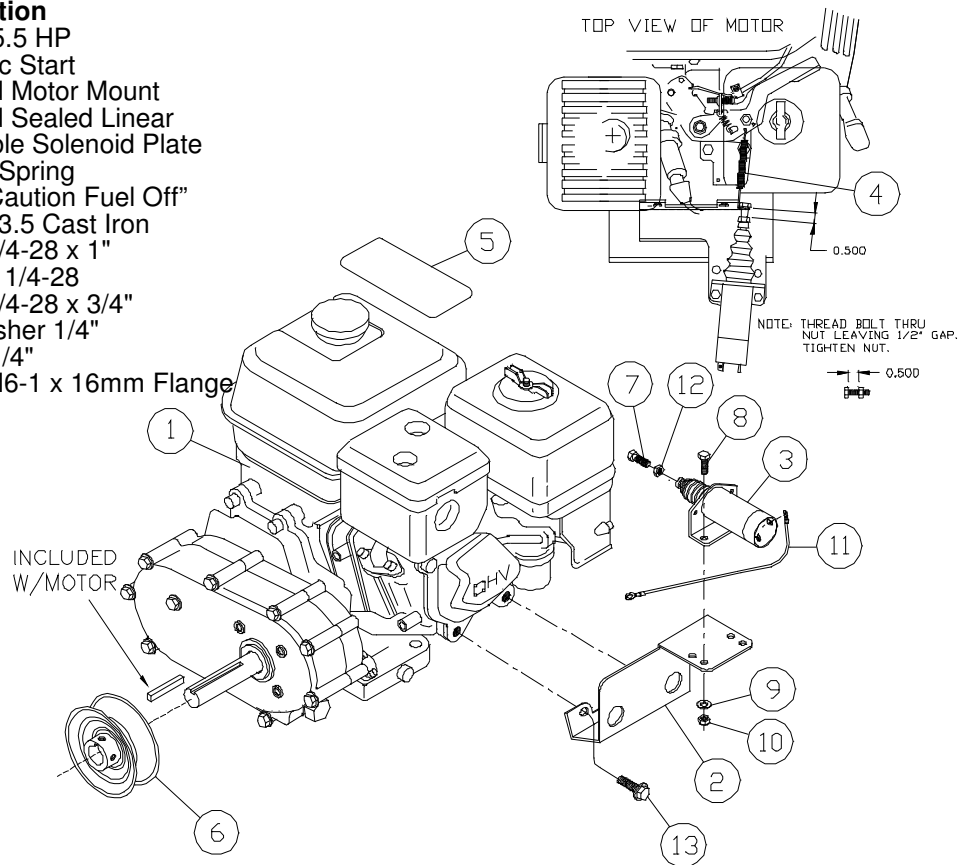
Item	Qty	Part No.	Description
1	1	607416	Manual Pak
2	4	01057900	HHCS 1/4" x 3/4"
3	4	02016400	Flat Washer 1/4"
4	1	05327200	Decal Warning Clean Out
5	1	05328000	Decal Danger Hopper
6	2	330928	Klik Pin 3/16"
7	10	330894	Flat Washer 3/8"
8	2	16864100	Pin 3/8" x 2 1/2"
9	10	330035	Hex Nut 3/8"
10	8	330043	Lock Washer 3/8"
11	6	335919	3/8" x 1 1/4"
12	1	971382	Transport Lock Top Right

Item	Qty	Part No.	Description
13	2	05325600	Decal Secure Tube w/strap
14	2	05315700	Decal Pinch Points
15	1	05303300	Decal Caution
16	2	17634700	Safety Strap Long
17	4	330522	Nylock Nut 1/4"
18	1	17993700	Owners Manual
19	1	971390	Transport Lock Bottom Right
20	1	971374	Transport Lock Top Left
21	1	971408	Transport Lock Bottom Left
22	2	972273	Transport Lock - Telescoping Tube

Seed Tender 160 & 240 Engine Assembly

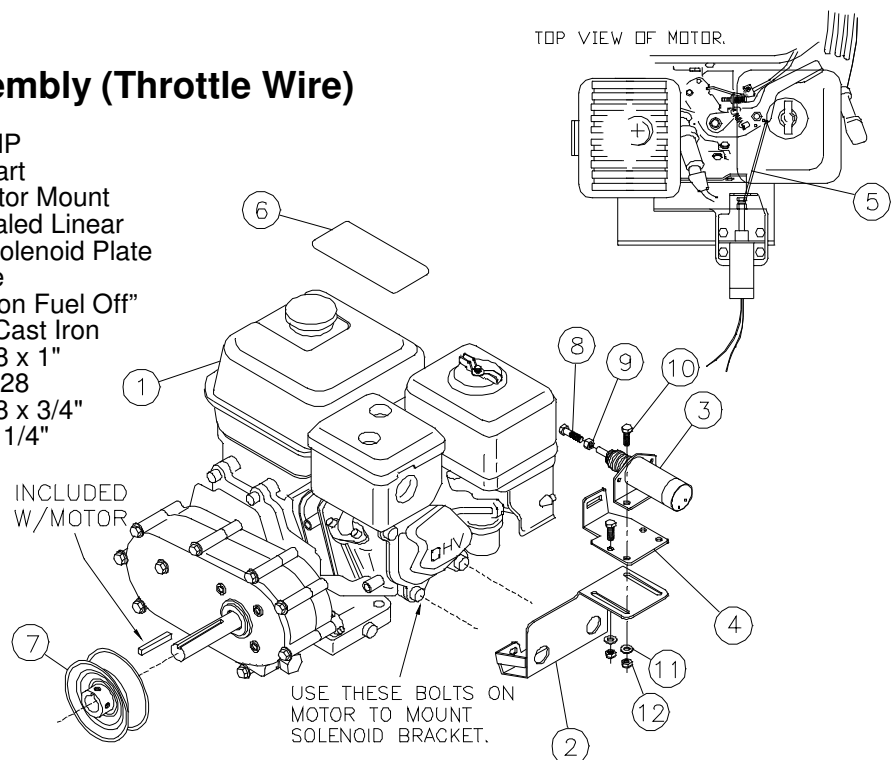
#63046700 - Engine Assembly (Throttle Spring)

Item	Qty	Part No.	Description
1	1	03750400	Engine 5.5 HP Electric Start
2	1	82820200	Solenoid Motor Mount
3	1	03961000	Solenoid Sealed Linear
4	1	30479000	Adjustable Solenoid Plate
5	1	04123600	Throttle Spring
6	1	05316500	Decal "Caution Fuel Off"
7	1	16612400	Sheave 3.5 Cast Iron
8	1	03959400	HHCS 1/4-28 x 1"
9	1	03960200	Hex Nut 1/4-28
10	2	01057900	HHCS 1/4-28 x 3/4"
11	2	02016400	Flat Washer 1/4"
12	2	330522	Nylock 1/4"
13	2	339242	Screw M6-1 x 16mm Flange



#62936000 - Engine Assembly (Throttle Wire)

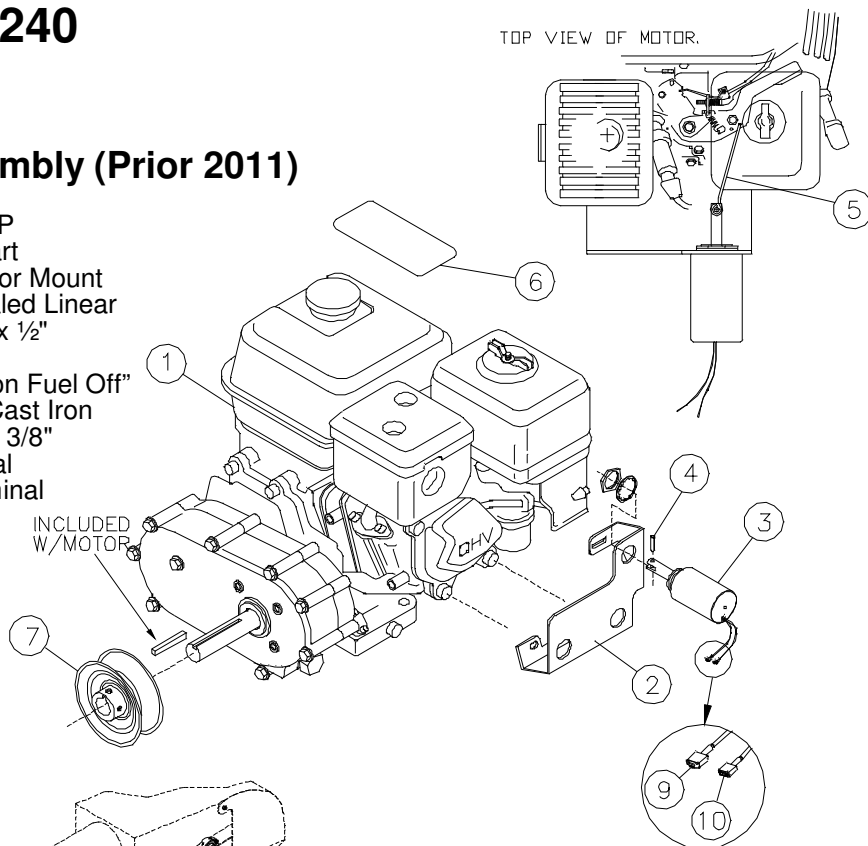
Item	Qty	Part No.	Description
1	1	03750400	Engine 5.5 HP Electric Start
2	1	235671	Solenoid Motor Mount
3	1	03961000	Solenoid Sealed Linear
4	1	285148	Adjustable Solenoid Plate
5	1	611202	Throttle Wire
6	1	05316500	Decal "Caution Fuel Off"
7	1	16612400	Sheave 3.5 Cast Iron
8	1	03959400	HHCS 1/4-28 x 1"
9	1	03960200	Hex Nut 1/4-28
10	4	01057900	HHCS 1/4-28 x 3/4"
11	4	02016400	Flat Washer 1/4"
12	4	330522	Nylock 1/4"



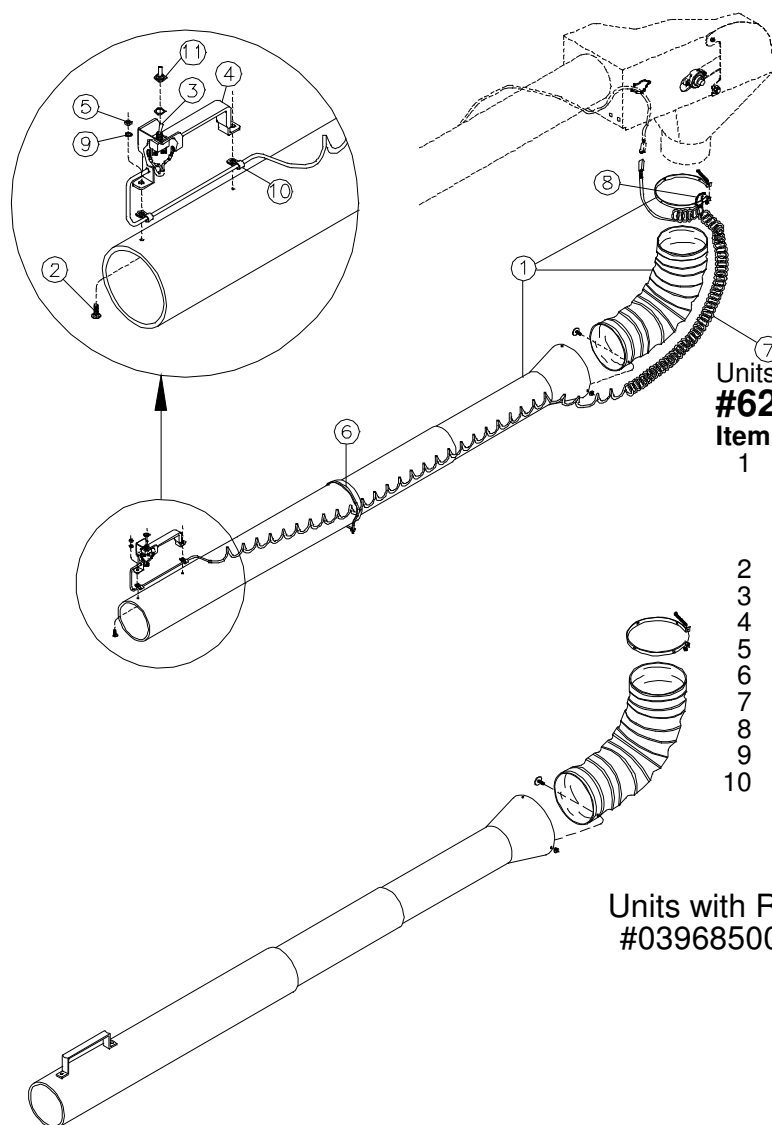
Seed Tender 160 & 240 Engine Assembly

#62772900 - Engine Assembly (Prior 2011)

Item	Qty	Part No.	Description
1	1	03750400	Engine 5.5 HP Electric Start
2	1	20530200	Solenoid Motor Mount
3	1	03751500	Solenoid Sealed Linear
4	1	03757200	Roll Pin 1/8" x 1/2"
5	1	03770500	Throttle Wire
6	1	05316500	Decal "Caution Fuel Off"
7	1	16612400	Sheave 3.5 Cast Iron
8	1	16613200	Key 7mm x 1 3/8"
9	1	03772100	Male Terminal
10	1	03771300	Female Terminal



Flexible Spout



Units without remote

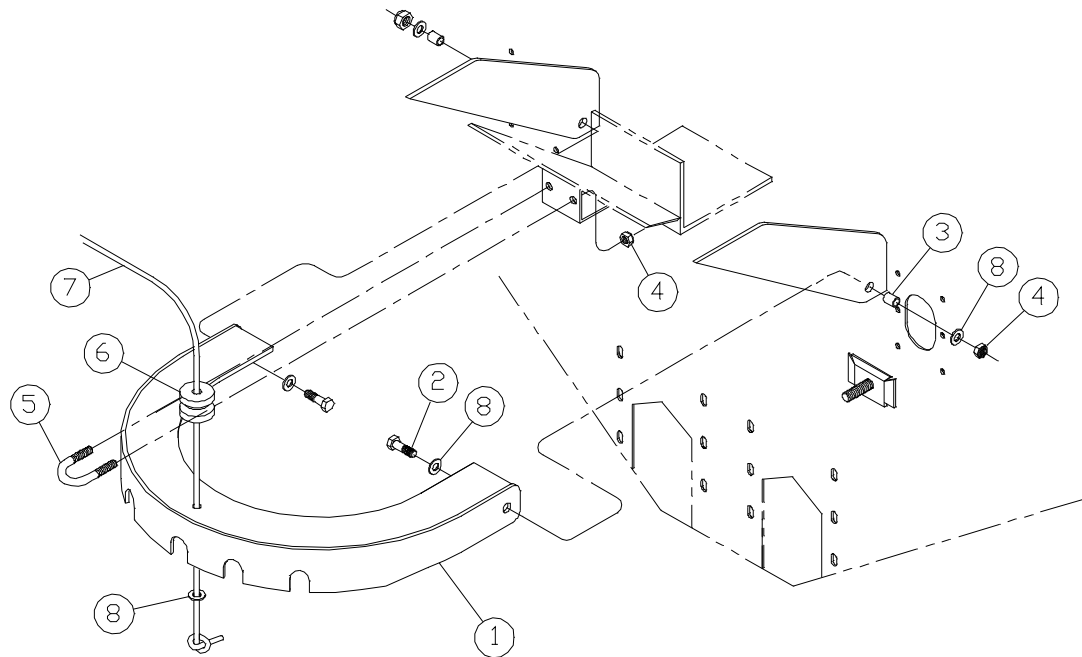
#62369400 - Flexible Spout Assembly

Item	Qty	Part No.	Description
1	1	01526300	Telescoping Feed Spout - 3 pc
		17669300	Flex Tube Only - 20"
		606590	Flex Tube Only - 36"
		03423100	Clamp Only
2	2	01065200	BE Bolt 1/4-20 x 1"
3	1	03723400	Switch
4	1	62748900	Handle Assembly
5	2	332205	Hex Nut 1/4"
6	1	571281	Cable Tie 24"
7	1	62380100	Retractable Wire Assembly
8	1	571299	Cable Tie 8 1/2"
9	2	330050	Lock Washer 1/4"
10	2	01059500	Clamp 5/16"

Units with Remote

#03968500 - 3 Section Spout with Molded Handle

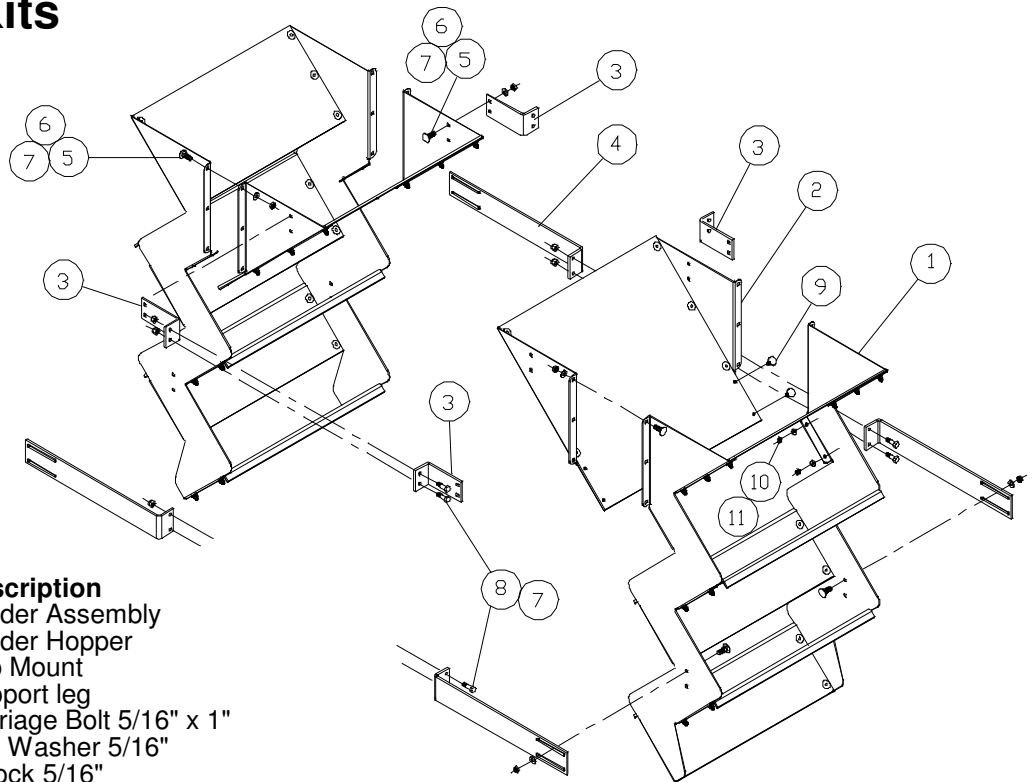
Seed Tender 160 & 240



Seed Tender Index

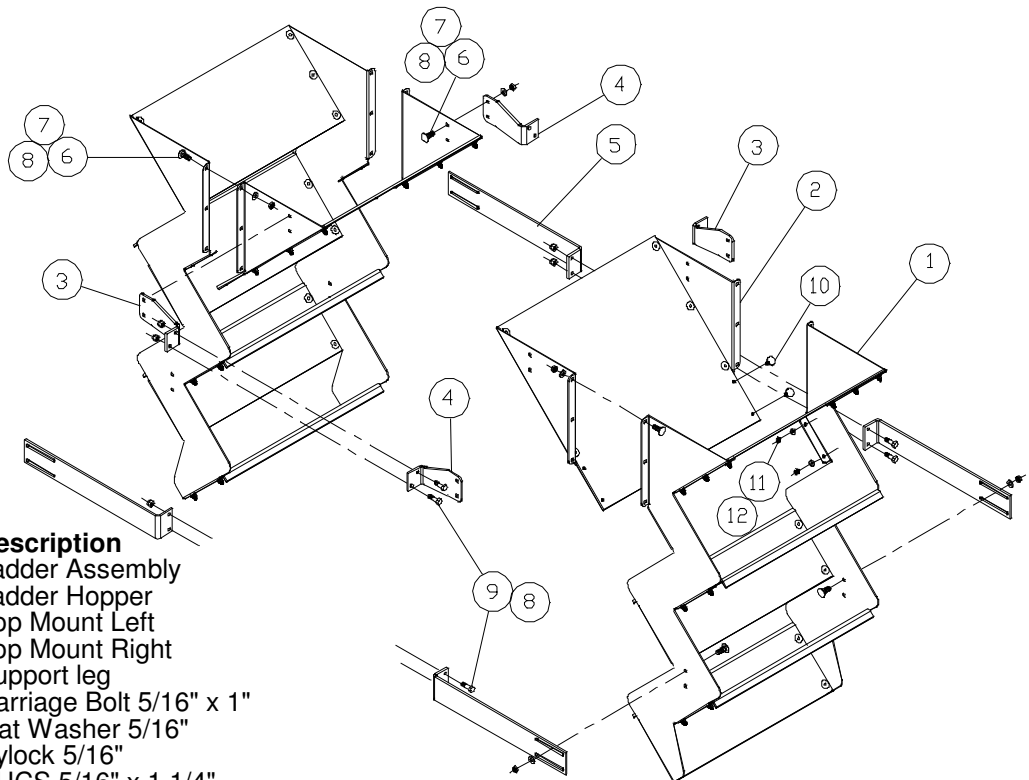
Item	Qty	Part No.	Description
1	1	82645300	Index
2	2	01158500	HHCS 3/8" x 1 1/4"
3	2	19892900	Bushing
4	4	330837	Hex Nylock Nut 3/8"
5	1	01034800	U-Bolt 3/8" x 1 1/4" x 2 1/4"
6	1	03651700	Insulator
7	33'	01467000	Nylon Rope 1/4"
8	5	330894	Flat Washer 3/8"

Seed Ladder Kits



#63158000 -160 Bu

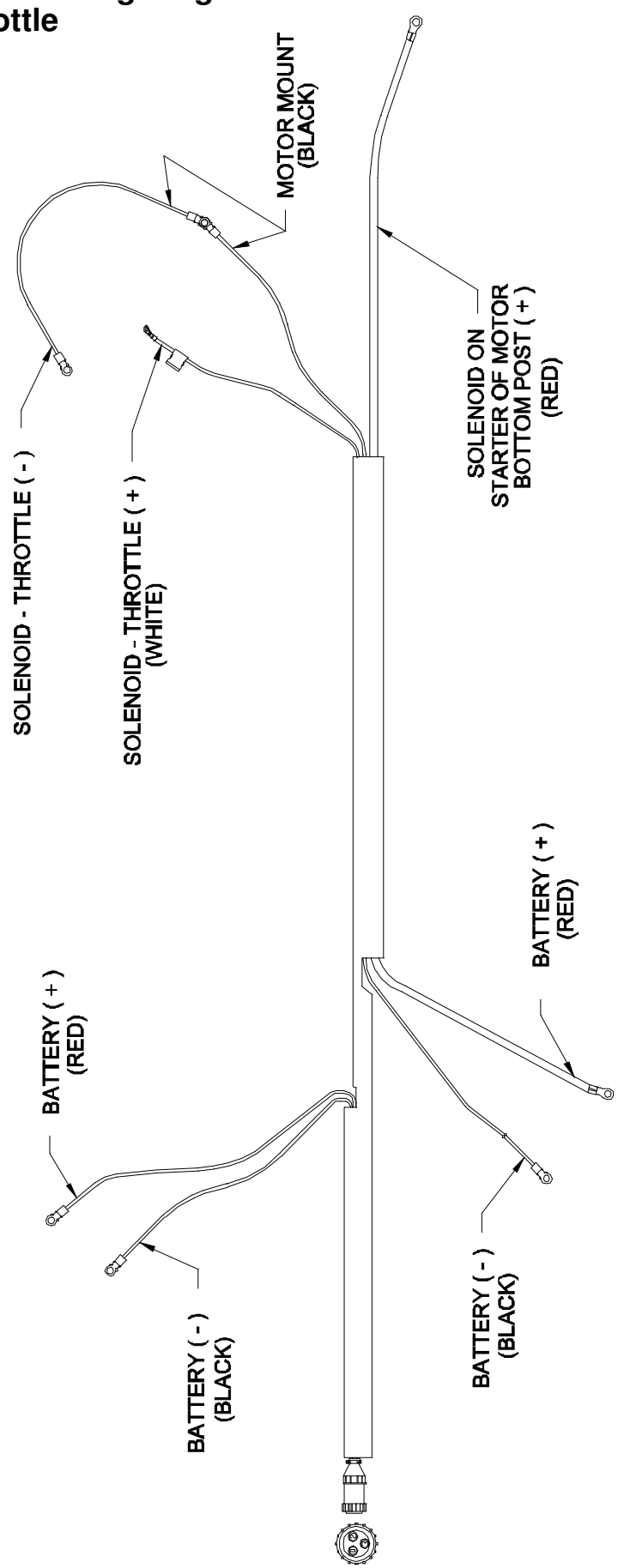
Item	Qty	Part No.	Description
1	2	63152300	Ladder Assembly
2	2	63153100	Ladder Hopper
3	4	30905400	Top Mount
4	4	30902100	Support leg
5	28	01047000	Carriage Bolt 5/16" x 1"
6	28	330852	Flat Washer 5/16"
7	36	331611	Nylock 5/16"
8	8	01011600	HHCS 5/16" x 1 1/4"
9	8	01065200	Bolt 1/4-20 x 1"
10	8	02016400	Flat Washer 1/4"
11	8	330522	Nylock 1/4"



#63151500 -240 Bu

Item	Qty	Part No.	Description
1	2	63152300	Ladder Assembly
2	2	63153100	Ladder Hopper
3	2	30900500	Top Mount Left
4	2	30901300	Top Mount Right
5	4	30902100	Support leg
6	28	01047000	Carriage Bolt 5/16" x 1"
7	28	330852	Flat Washer 5/16"
8	36	331611	Nylock 5/16"
9	8	01011600	HHCS 5/16" x 1 1/4"
10	8	01065200	Bolt 1/4-20 x 1"
11	8	02016400	Flat Washer 1/4"
12	8	330522	Nylock 1/4"

**Remote Control Wiring Diagram
Gas Throttle**



Remote Control

To Program Remote:

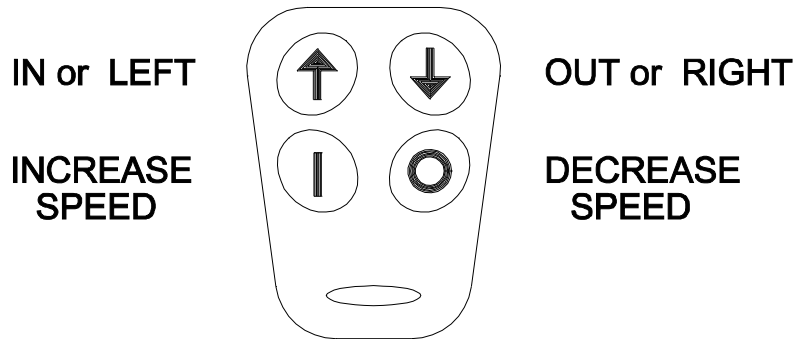
Power up the unit. When you do so, the LED on the receiver unit will flash RED four times. This indicates that the unit has received power. There is magnetically controlled switching circuitry embedded in the receiver unit. Place a fairly powerful magnet over the receiver "learn" area (near R11) for a brief moment (3 seconds), and then remove it. The LED will go to constant RED state. Now immediately press any button on the transmitter you are attempting to learn in. The LED will go to a GREEN/YELLOW color. This confirms that the receiver has picked up a signal from the transmitter, and subsequently learned that signal. Communication has been established, and it is now ready to function properly.

Troubleshooting:

Should the above procedure not complete successfully, wait until the LED light goes out, and repeat the procedure. If for any reason you experience a second failure of the learn procedure, do the following. Place the magnet on the learn area and the LED will go to a constant RED state. Leave the magnet in place on the receiver until the LED light goes out (approximately 10 seconds). This action completely clears the receiver's memory. It's akin to reformatting, or freeing up all of the space on a computer hard drive. Once you have cleared the memory, proceed with the standard learn procedure detailed above for each of the key fob transmitters you wish to use with the device. If, after all of the procedures detailed above are completed, the unit is still not functioning, check the battery in the transmitter once again. (Occasionally, even new batteries fail, or are defective from the factory. If you have a voltage meter, confirm that battery voltage is at least 2.7 volts.) If that still does not solve the problem, contact CrustBuster/Speed King, Inc. At (620) 227-7106.

Battery:

It is recommended that the battery be replaced every year.





P. O. Box 1438

Dodge City, Kansas 67801

(620) 227-7106
