



ROSE AND WAID
FUNERAL HOME & CREMATORY, INC.

Meadville

Conneaut Lake



ROSE AND BLACK
FUNERAL HOME & CREMATORY, INC.

Stoneboro

Sandy Lake

General Price List

Casket Price List

Outer Burial Container Price List

Alternative Container Price List

Package Price List

Prices Effective January 1, 2025
Prices are subject to change without notice

Meadville

581 Chestnut Street
Meadville, PA 16335
(814) 724-1021
Casey W. Rose, FD, Supvr

Conneaut Lake

12422 Conneaut Lake Road
Conneaut Lake, PA 16316
(814) 382-3646
Todd A. Waid, FD, Supvr

Stoneboro

99 Franklin Street
Stoneboro, PA 16153
(724) 376-4000
Scott A. Black, FD, Supvr

Sandy Lake

3236 S. Main Street
Sandy Lake, PA 16145
(724) 376-7755
Robert S. Waid, FD, Supvr



Meadville
581 Chestnut Street
Meadville, PA 16335
(814) 724-1021
Casey W. Rose, FD, Supvr

Conneaut Lake
12422 Conneaut Lake Road
Conneaut Lake, PA 16316
(814) 382-3646
Todd A. Waid, FD, Supvr

Stoneboro
99 Franklin Street
Stoneboro, PA 16153
(724) 376-4000
Scott A. Black, FD, Supvr

Sandy Lake
3236 S. Main Street
Sandy Lake, PA 16145
(724) 376-7755
Robert S. Waid, FD, Supvr

Rose Family of Funeral Homes Mission Statement

It is the mission of the Rose Family of Funeral Homes to facilitate meaningful ways for families to celebrate the memories of their loved ones and grieve their loss. We are committed to providing information, options, and guidance with the highest level of competence, courtesy and compassion.

We will provide respectful and affordable funeral, cremation and memorial services in a comfortable environment, always striving to exceed the expectations of each family we serve.

Company Policies

Payment Policy

Our payment policy requires funeral expenses to be **PAID IN FULL BY DAY OF SERVICES**. After which late fees will be assessed, which is explained on the Statement of Funeral Goods and Services Contract. **Acceptable forms of payment are Check, Cash, Credit Card, Verified Life Insurance Policy, Pre-Paid Funeral Contract, Money Order, or Cashier's Check.** Since Verified Life Insurance Policies are typically not paid before services are complete, a third party assignment company is used, at no out of pocket cost to the family, to assign the policy. Once this policy is verified and assigned the funeral contract is considered paid in full.

We are unable to accept the following as forms of payment: VA Policies, Estates, GoFundMe/Crowd Sourcing, Monthly Payment Plans, or any unassignable/unverifiable insurance policies. FEMA Covid-19 Reimbursement is only payable to the family after funeral expenses have been paid in full, FEMA requires a paid in full statement from the funeral home.

We also accept and honor Pre-Paid Funeral Contracts from other funeral homes.

Embalming Policy

Except in certain special cases, Embalming is not required by law. Embalming may be necessary, however, if you select certain funeral arrangements, such as a funeral with viewing. If you do not want embalming, you usually have the right to choose an arrangement, such as direct cremation or immediate burial, that does not require you to pay for an embalming. –

Federal Trade Commission

Our Funeral Home policy is that all public visitations where the deceased will be viewed, embalming must take place. This is not required for Identification Viewings where 2-3 immediate family members may see the deceased within 24 hours of passing before cremation or burial takes place. If it is requested to view the deceased after the initial 24 hours after passing, embalming will be required.



Meadville
581 Chestnut Street
Meadville, PA 16335
(814) 724-1021
Casey W. Rose, FD, Supvr

Conneaut Lake
12422 Conneaut Lake Road
Conneaut Lake, PA 16316
(814) 382-3646
Todd A. Waid, FD, Supvr

Stoneboro
99 Franklin Street
Stoneboro, PA 16153
(724) 376-4000
Scott A. Black, FD, Supvr

Sandy Lake
3236 S. Main Street
Sandy Lake, PA 16145
(724) 376-7755
Robert S. Waid, FD, Supvr

GENERAL PRICE LIST

These prices are effective as of January 1, 2025

The goods and services shown below are those we can provide to our customers. You may choose only the items you desire. However, any funeral arrangements you select will include a charge for our basic services and overhead. If legal or other requirements mean you must buy any items you did not specifically ask for, we will explain the reason in writing on the statement we provide describing the funeral goods and services you selected.

Basic Services of Funeral Director and Staff and Overhead

\$ 1,995

Our services include: conducting the arrangements conference; planning the funeral; consulting with family and clergy; shelter of remains; preparing and filing of necessary notices; obtaining necessary authorizations and permits; coordinating with the cemetery, crematory, or other third parties. In addition, this fee includes a proportionate share of our basic overhead costs. This fee for our basic services and overhead will be added to the total cost of the funeral arrangements you select. (This fee is already included in our charges for direct cremations, immediate burials, and forwarding or receiving remains.)

Embalming

\$ 995

Except in certain special cases, Embalming is not required by law. Embalming may be necessary, however, if you select certain funeral arrangements, such as a funeral with viewing. If you do not want embalming, you usually have the right to choose an arrangement, such as direct cremation or immediate burial, that does not require you to pay for an embalming.

Other Preparation of the Body

Dressing, Casketing, Cosmetology OR Preparation & Shrouding/Casketing for Green Burial

\$ 295

Disinfection/preparation for Visual Identification

\$ 325

Autopsy Preparation

\$ 250

Refrigeration (per day)

\$ 75

Use of Facilities/Equipment and Staff for:

Viewing (per day) at the Funeral Home

\$ 600

Viewing (per day) at another Facility

\$ 700

Funeral or Memorial Ceremony at the Funeral Home

\$ 700

Funeral or Memorial Ceremony at another Facility

\$ 800

Graveside Service/Service Immediately Following Visitation

\$ 500

Funeral or Memorial service with 2 hours of visitation prior at the Funeral Home

\$ 900

Funeral or Memorial service with 2 hours of visitation prior at another Facility

\$ 1000

Staff Supervision at burial with no graveside service

\$ 250

Saturday Service Charge (any visitation, funeral, or memorial)

\$ 400

Sunday/Holiday Weekend Services (any visitation, funeral, or memorial)

\$ 500

Holidays such as New Year's Day, Easter, Memorial Day, Independence Day, Labor Day, Thanksgiving, & Christmas, services will be unable to be scheduled.

Transportation/Automotive Equipment:

Transfer of Remains to the Funeral Home (within 25-mile radius)

\$ 495

beyond this radius we charge \$3 per mile, Pittsburgh, Erie, Cleveland Hospitals additional

\$ 300

Additional personnel on transfer (per person)

\$ 100

Hearse

\$ 495

Service Vehicle (lead car, flower vehicle, crematory transport, etc.)

\$ 95

Caskets **\$ 2,195 to \$ 9,995**

A complete price list will be provided at the funeral home.

Outer Burial Containers **\$ 1,395 to \$3,995**

A complete price list will be provided at the funeral home.

Alternative Containers **\$ 250 to \$2,495**

A complete price list will be provided at the funeral home.

Urns **\$ 195 to \$ 395**

A complete price list will be provided at the funeral home

Green Burial Casket Options **\$ 1,795 - \$1,995**

A complete price list will be provided at the funeral home

Miscellaneous Merchandise

Register Book Package (register book, memorial folders/prayer cards, and acknowledgement cards)	<u>\$ 250</u>
Memory Board	<u>\$ no charge</u>
Flash Drive for Photo DVD (up to 75 photos, includes 2 copies; additional copies \$10 each)	<u>\$ 150</u>
Livestream Funeral or Memorial Service	<u>\$ 150</u>
Veterans Flag Cases	<u>\$ 150 - \$300</u>
Crucifix	<u>\$ 40</u>
Temporary Grave Marker	<u>\$ 40</u>
Laminated Obituaries	<u>\$ 3 each</u>
Rental Casket with Insert (standard sized)	<u>\$1,395</u>

Forwarding of Remains to Another Funeral Home **\$ 2,995**

Our charge includes: basic services of funeral director and staff; a proportionate share of overhead costs; removal of remains; preparation of remains, including embalming, and transportation to Pittsburgh Airport.

Receiving Remains from Another Funeral Home **\$ 1,995**

Our charge includes: basic services of funeral director and staff; a proportionate share of overhead costs; care of remains; transportation of remains to funeral home and to cemetery or crematory.

Immediate Burial **\$ 2,995 to \$ 12,900**

Our charge for an immediate burial (without ceremony) includes: basic services of funeral director and staff; a proportionate share of overhead costs; removal of remains; and local transportation to cemetery. Casket range and Outer Burial Container Price Range listed above

- A. Immediate burial with casket provided by the purchaser **\$ 2,995**
B. Immediate burial with casket selected at the funeral home **\$ 2,995 + Casket**

Direct Cremation **\$ 2,995**

Our charge for a direct cremation (without ceremony) includes: basic services of funeral director and staff; a proportionate share of overhead costs; removal of remains from place of death; transportation to crematory; refrigeration until cremation can be performed; necessary authorizations. If you want to arrange a direct cremation, you can use an alternative container. Alternative containers encase the body and can be made of materials like fiberboard or composition materials (with or without an outside covering). The containers we provide are a reinforced cardboard receptacle. An alternative container is required by Sandy Creek Cremation & Monument Company. Also includes \$50 coroner fee & Crematory Fee up to 300 lbs. Additional \$100 per 100 lbs over 300 will be added as appropriate.

- A. Immediate Direct cremation with container provided by the purchaser **\$ 2,745**
B. Immediate Direct cremation with container provided by the funeral home (standard alternative container) **\$ 2,995**
C. Immediate Direct cremation with alternative container/casket selected at the funeral home **\$ 2,745 + Casket**

Humanity Gifts Registry (Donation to Science) **\$ 2,200**

Our charge includes: basic services of funeral director and staff; a proportionate share of overhead costs; care of remains; and transportation of remains to Humanity Gifts Registry designated location.



Meadville
581 Chestnut Street
Meadville, PA 16335
(814) 724-1021
Casey W. Rose, FD, Supvr

Conneaut Lake
12422 Conneaut Lake Road
Conneaut Lake, PA 16316
(814) 382-3646
Todd A. Waid, FD, Supvr

Stoneboro
99 Franklin Street
Stoneboro, PA 16153
(724) 376-4000
Scott A. Black, FD, Supvr

Sandy Lake
3236 S. Main Street
Sandy Lake, PA 16145
(724) 376-7755
Robert S. Waid, FD, Supvr

Burial Package Price List

Prices Effective January 1, 2025

All packages can be combined with any and all caskets, alternative containers and burial vaults.

Two-Day Service Burial Package

\$5,995.00

Includes:

Basic services of Funeral Director and staff

Embalming, dressing, casketing, cosmetology

Automotive costs (hearse, clergy/utility vehicle, transfer, within 15-mile radius)

4 hours of visitation, 1-hour visitation prior to service the following day, all at Funeral Home

Standard register book set and Life tribute DVD

****Casket, Burial Vault, Cash Advance Items, not included****

One-Day Service Burial Package

\$5,595.00

Includes:

Basic services of Funeral Director and staff

Embalming, dressing, casketing, cosmetology

Automotive costs (hearse, transfer, within 15-mile radius)

2 hours of visitation, service to follow visitation, all at Funeral Home

Burial following day if needed/applicable

Standard register book set and Life tribute DVD

****Casket, Burial Vault, Cash Advance Items, not included****

Immediate Burial Package

\$6,995.00

Includes:

Basic services of Funeral Director and staff

sheltering, dressing, casketing

Automotive costs (hearse, transfer, within 15-mile radius)

20 Gauge Barron Casket

Concrete Grave Liner

**** Cash Advance Items not included****





Meadville
581 Chestnut Street
Meadville, PA 16335
(814) 724-1021
Casey W. Rose, FD, Supvr

Conneaut Lake
12422 Conneaut Lake Road
Conneaut Lake, PA 16316
(814) 382-3646
Todd A. Waid, FD, Supvr

Stoneboro
99 Franklin Street
Stoneboro, PA 16153
(724) 376-4000
Scott A. Black, FD, Supvr

Sandy Lake
3236 S. Main Street
Sandy Lake, PA 16145
(724) 376-7755
Robert S. Waid, FD, Supvr

Cremation Package Price List

Price Effective January 1, 2025

All packages can be combined with any and all caskets, alternative containers and burial vaults

Two-Day Cremation Service Package

\$7,695.00

Includes:

Basic services of Funeral Director and staff
Embalming, dressing, casketing, cosmetology
Automotive costs (transfer, within 15-mile radius)
Coroner Fee, Crematory Fee
One day of visitation
Funeral service the following day, all at Funeral Home
Standard register book set and Life tribute DVD
Rental Casket (Standard Size)

** Urn & Cash Advance Items not included **



One-Day Cremation Service Package

\$7,395.00

Includes:

Basic services of Funeral Director and staff
Embalming, dressing, casketing, cosmetology
Automotive costs (transfer, within 15-mile radius)
Coroner Fee, Crematory Fee
2 hours of visitation, service to follow visitation, all at Funeral Home
Standard register book set and Life tribute DVD
Rental Casket (Standard Size)

** Urn & Cash Advance Items not included **



Memorial Cremation Package

\$4,795.00

Includes:

Immediate Cremation Charge
Alternative Container
Coroner Fee, Crematory Fee
2 hours of visitation, service to follow visitation, all at Funeral Home
Standard register book set and Life tribute DVD
\$295 Urn & Keepsake Allowance

** Urn & Cash Advance Items not included **



Immediate Cremation Package

\$2,995.00

Includes:

Immediate Cremation Charge
Alternative Container for Cremation
Coroner Fee, Crematory Fee

** Urn & Cash Advance Items not included **



Meadville
581 Chestnut Street
Meadville, PA 16335
(814) 724-1021
Casey W. Rose, FD, Supvr

Conneaut Lake
12422 Conneaut Lake Road
Conneaut Lake, PA 16316
(814) 382-3646
Todd A. Waid, FD, Supvr

Stoneboro
99 Franklin Street
Stoneboro, PA 16153
(724) 376-4000
Scott A. Black, FD, Supvr

Sandy Lake
3236 S. Main Street
Sandy Lake, PA 16145
(724) 376-7755
Robert S. Waid, FD, Supvr

Green Burial Package Price List

Price Effective January 1, 2025

All packages can be combined with any casket or shroud

Green Ceremonial Service Package

\$4,295.00

Includes:

Basic services of Funeral Director and staff
Refrigeration until burial can take place
Dressing, shrouding or casketing, sanitation.
Automotive costs (transfer, within 15-mile radius, hearse)
Private Family Farewell at Funeral Home immediately prior to burial
Graveside Service

** Casket or Shroud & Cash Advance Items not included **

Green Minimal Service Package

\$3,795.00

Includes:

Basic services of Funeral Director and staff
Refrigeration until burial can take place
Dressing, shrouding or casketing, sanitation.
Automotive costs (transfer, within 15-mile radius, hearse)
Staff attendance at burial.

** Casket or Shroud & Cash Advance Items not included **

Green Burial Shroud & Casket Options

Price Effective January 1, 2025

Willow Carrier with Bamboo Shroud

Bamboo Fiber Shroud and Willow Wicker Carrier

250 Lbs weight limit

\$ 1,795



Greenwood

Solid Pine

No metal in its construction.

\$ 1,995





Meadville
581 Chestnut Street
Meadville, PA 16335
(814) 724-1021
Casey W. Rose, FD, Supvr

Conneaut Lake
12422 Conneaut Lake Road
Conneaut Lake, PA 16316
(814) 382-3646
Todd A. Waid, FD, Supvr

Stoneboro
99 Franklin Street
Stoneboro, PA 16153
(724) 376-4000
Scott A. Black, FD, Supvr

Sandy Lake
3236 S. Main Street
Sandy Lake, PA 16145
(724) 376-7755
Robert S. Waid, FD, Supvr

Casket Price List

Prices effective January 1, 2025

Barron

\$2,195

20 ga steel, non gasketed, crepe interior,
available in silver, copper, white, blue



Bradford

\$2,595

20 ga steel, non gasketed, crepe interior,
available in silver, copper, white, blue



Sutton

\$2,995

20 ga steel, non gasketed, crepe interior,
available in copper, white/pink, silver, blue



Springfield

\$3,995

18 ga steel, gasketed, velvet interior,
Available in copper, blue, orchid, and silver



Freedom or Patriot

\$4,295

18 ga steel, gasketed, white velvet interior,
Black or Blue finish available in Army, Air Force,
Marine Corp, Navy, and Coast Guard



Centura

\$5,995

Stainless Steel, gasketed, velvet interior,
Available in brushed pink and brushed blue



Victoria Copper

\$9,995

Solid Copper, gasketed, velvet interior,
Available in copper and rose finish



Linsan

\$3,295

Poplar veneer, rosetan crepe interior,
available in walnut and mahogany finish



Birmingham

\$3,595

Poplar veneer, basketweave interior,
available in walnut and pine finish



Adirondack Pine

\$3,995

Solid pine, crepe interior,
natural pine finish



Oak Wood

\$4,995

Solid oak, rosetan crepe interior,
satin oak finish



Gatewood

\$5,995

Solid cherry, almond velvet interior,
Satin amber finish





Meadville
581 Chestnut Street
Meadville, PA 16335
(814) 724-1021
Casey W. Rose, FD, Supvr

Conneaut Lake
12422 Conneaut Lake Road
Conneaut Lake, PA 16316
(814) 382-3646
Todd A. Waid, FD, Supvr

Stoneboro
99 Franklin Street
Stoneboro, PA 16153
(724) 376-4000
Scott A. Black, FD, Supvr

Sandy Lake
3236 S. Main Street
Sandy Lake, PA 16145
(724) 376-7755
Robert S. Waid, FD, Supvr

Outer Burial Container Price List

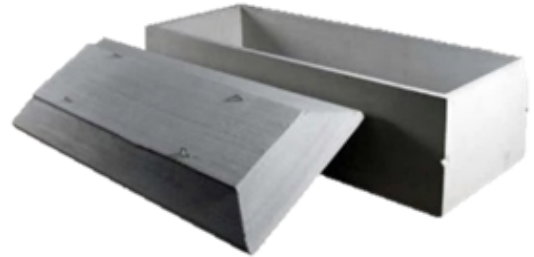
Prices effective January 1, 2025

State or local law does not require that you buy a container to surround the casket in the grave. However, many cemeteries require that you have such a container so that the grave will not sink in. Either a grave liner or a burial vault will satisfy these requirements. An additional \$200 will be added on for any burial taking place on a Saturday, and \$400 for burial taking place on Sundays, by the vault company.

Concrete Grave Liner

\$1,495

Cave proof container,
non-sealing, standard exterior



Doric Titan

\$1,995

Cave proof, durapreme lining,
tri-guard seal, standard exterior



Doric Tiara

\$2,295

Cave proof, durapreme lining,
tri-guard seal, textured exterior



Doric Patrician

\$2,595

Cave proof, lustra-tech lining,
tri-guard seal, textured exterior, lustra-tech cap



Athenian SST

\$3,595

Cave proof, stainless steel lining,
Textured exterior, stainless steel cap



Lydian Copper

\$4,595

Cave proof, copper lining,
Textured exterior, copper cap





Meadville
581 Chestnut Street
Meadville, PA 16335
(814) 724-1021
Casey W. Rose, FD, Supvr

Conneaut Lake
12422 Conneaut Lake Road
Conneaut Lake, PA 16316
(814) 382-3646
Todd A. Waid, FD, Supvr

Stoneboro
99 Franklin Street
Stoneboro, PA 16153
(724) 376-4000
Scott A. Black, FD, Supvr

Sandy Lake
3236 S. Main Street
Sandy Lake, PA 16145
(724) 376-7755
Robert S. Waid, FD, Supvr

Urn Outer Burial Container Price List

Prices effective January 1, 2025

State or local law does not require that you buy a container to surround the urn in the grave. However, many cemeteries require that you have such a container so that the grave will not sink in. Either a grave liner or a burial vault will satisfy these requirements. An additional \$200 will be added on for any burial taking place on a Saturday, and \$400 for burial taking place on Sundays, by the vault company.

Crowne Vault

\$395

Cave proof container, sealing,
cave proof container



Norwalk

\$595

Cave proof container, sealing,
water resistant, asphalt coated exterior



Titan

\$895

Cave proof, durapreme lining,
tri-guard seal, standard exterior





Meadville
581 Chestnut Street
Meadville, PA 16335
(814) 724-1021
Casey W. Rose, FD, Supvr

Conneaut Lake
12422 Conneaut Lake Road
Conneaut Lake, PA 16316
(814) 382-3646
Todd A. Waid, FD, Supvr

Stoneboro
99 Franklin Street
Stoneboro, PA 16153
(724) 376-4000
Scott A. Black, FD, Supvr

Sandy Lake
3236 S. Main Street
Sandy Lake, PA 16145
(724) 376-7755
Robert S. Waid, FD, Supvr

Alternative Container Price List

Prices effective January 1, 2025

Standard Alternative Container

\$250

Included in all cremation options
Reinforced cardboard receptacle



Tray View Container

\$595

Ideal for identification viewings
Fiberboard with wood grain finish



Longley

\$2,895

Carte veneer, medium cherry finish,
rosetan crepe interior



Norfolk

\$2,895

Carte veneer, light pine finish,
rosetan crepe interior



Register Book Selections

Prices effective January 1, 2025

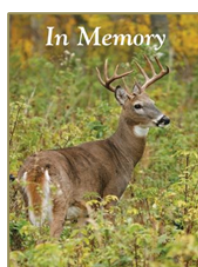
Full Register Book Set (included in all services packages with a visitation)

\$250

Includes personalized register book

100 memorial folders

box of acknowledgement cards



Urn Price List

Prices effective January 1, 2025

Other items available upon request, prices may vary on requested/special order items, special ordered items are subject to

\$395



Cultured Marble Companion



Pearl



Wimer

Locally Made
Engraving + \$75



Slate



Butterfly



Russet

\$295



Old Glory



Chestnut



Crimson



Camo



Nature's Vision



Sacred Locke



Cultured Marble



Woodland



Going Home



Carved Vine



Handcrafted

\$195



Rustic



Swirl



Egyptian



Scattering

Keepsake Urns & Jewelry Price List

Prices effective January 1, 2025

Other items available upon request, prices may vary on requested/special order items

Small Keepsake Urns

\$75



Camouflage



Old Glory



Wood Grain



Pewter Ivy



Gold Ivy



Chestnut Bronze



Going Home



Aqua



Royal



Sterling



Mother of Pearl



Rosewood

Large Keepsake Urns & Hearts

\$125



Walnut Heart



Natural Heart



Pewter Heart



Carved Vine



Ceramic



Maroon Memory



Carved Flower

Assorted Remembrance Jewelry

\$75



Fingerprint Jewelry

\$150.00 - \$195.00

Jewelry Pieces are all sterling silver, pieces that are gold and rose gold are plated sterling silver. Solid gold, white gold, and rose gold pieces are available upon request, prices will vary. Other items & custom items available upon request, prices and appearance will vary.



Dog Tag

Silver or Black
\$150



Heart Pendant

Silver, Gold, or Rose Gold
\$150



Pocket Knife

\$195



Bar Pendant

Silver, Gold, or Rose Gold
\$150



Oval Pendant

Silver, Gold, or Rose Gold
\$150



Cross Pendant

Silver, Gold, or Rose Gold
\$150



Ring

Silver, Gold, or Rose Gold
\$195



Bracelet

Silver or Gold
\$150

Brown or Black Leather
Heart or Circle Charm

Third-Party Cash Advance Items

Cash advance items are **estimated** costs from third-party vendors that are not guaranteed. They are done at cost and no additional fees from the funeral home are added for the addition of these fees to the Statement of Funeral Goods and Services.

Certified Copies of Death Certificate

Pennsylvania (each)	\$ 20
Ohio (each, varies by county)	\$ 25
Ohio Permit Fee	\$ 3

Newspapers

Newspapers charge by the word, the estimates shown are based on the average cost of an obituary placed in each corresponding paper. The final price for the obituary will appear on your final statement

Meadville Tribune	\$ 500
Sharon Herald	\$ 500
Allied News	\$ 500
Allied News (in addition to Sharon Herald)	\$ 50
Franklin News Herald	\$ 175
Oil City Derrick	\$ 175
Greenville Record Argus	\$ 275

Floral Arrangements

These prices are based on funeral home florist preference. Any florist can be used upon request, but prices may vary depending on the florist of choice. Prices may also vary depending on the type of flowers chosen. The prices below will then have 6% sales tax added.

Overhead Spray	\$ 350 - \$450
Foot Spray	\$ 175 - \$250

Clergy/Musician Honorarium	\$ 150 - \$300
-----------------------------------	-----------------------

This is a donation to any clergy/honor guard/ musician for use of their services. The average is listed above. Many clergy/honor guard/ musicians have a pre-set charge for taking part in the service.

Hairdresser	\$ 50 - \$100
--------------------	----------------------

Families are welcome to request a known hairdresser to come in and do a decedent's hair. If the family does not know of one the funeral home works with several and can provide one for you.

Final Lettering of Monument	\$ 250 - \$400
------------------------------------	-----------------------

This is the average cost for the date of death carving on an existing cemetery monument. This price can vary based on type of granite/bronze the monument is and the type of lettering on the monument.

Tent Rental at Cemetery	\$ 212
--------------------------------	---------------

Graveside Service Setup, no tent	\$ 106
---	---------------

Tent Rental at Cemetery for Cremation Service	\$ 424
--	---------------

Graveside Service Setup, no tent, for Cremation Service	\$ 106
--	---------------



Meadville
581 Chestnut Street
Meadville, PA 16335
(814) 724-1021
Casey W. Rose, FD, Supvr

Conneaut Lake
12422 Conneaut Lake Road
Conneaut Lake, PA 16316
(814) 382-3646
Todd A. Waid, FD, Supvr

Stoneboro
99 Franklin Street
Stoneboro, PA 16153
(724) 376-4000
Scott A. Black, FD, Supvr

Sandy Lake
3236 S. Main Street
Sandy Lake, PA 16145
(724) 376-7755
Robert S. Waid, FD, Supvr

Funeral Cost Estimate Worksheet

○ Two-Day Burial Package		\$ _____
○ One-Day Burial Package		\$ _____
○ Immediate Burial Package		\$ _____
○ Two-Day Cremation Package		\$ _____
○ One-Day Cremation Package		\$ _____
○ Memorial Cremation Package		\$ _____
○ Immediate Cremation		\$ _____
○ Casket	_____	\$ _____
○ Burial Vault	_____	\$ _____
○ Urn	_____	\$ _____
○ Keepsake Jewelry	_____	\$ _____
Subtotal		\$ _____

Cash Advance Items

Cash advance items are costs from third-party vendors. These items are done at cost and no additional fees are added for the addition of these fees to the Statement of Funeral Goods and Services.

○ Death Certificates (\$20 each in PA)		\$ _____
○ Newspaper Obituary	_____	\$ _____
○ Newspaper Obituary	_____	\$ _____
○ Cemetery Costs	_____	\$ _____
○ Floral Arrangements	_____	\$ _____
○ Clergy Honorarium	_____	\$ _____
○ Organist/Cantor	_____	\$ _____
○ Hairdresser	_____	\$ _____
○ Misc.	_____	\$ _____
○ Misc.	_____	\$ _____
○ Misc.	_____	\$ _____
Cash Advance Subtotal		\$ _____
Total Cost Estimate		\$ _____