



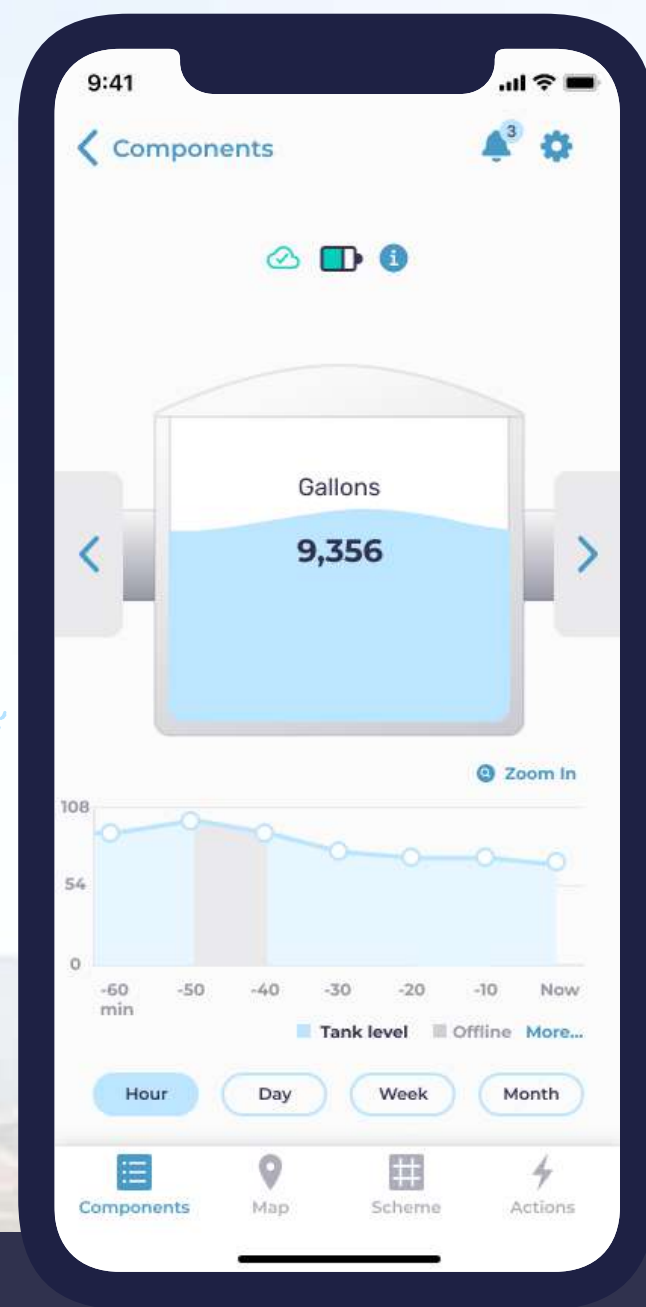
# Tank Level Monitoring

The meter.me tank level monitoring system offers remote visibility to your tanks, even in areas where there is no power or Internet network available.

Our system is simple to install and our user-friendly mobile application allows you to easily stay informed and save water at a low monthly cost.

Upper Tank

Lower Tank



## Benefits

- Monitor and manage your water usage trends
- Use tank level stats and alerts to help identify leaks and save money
- Have peace of mind by staying informed about your tank levels anytime, anywhere

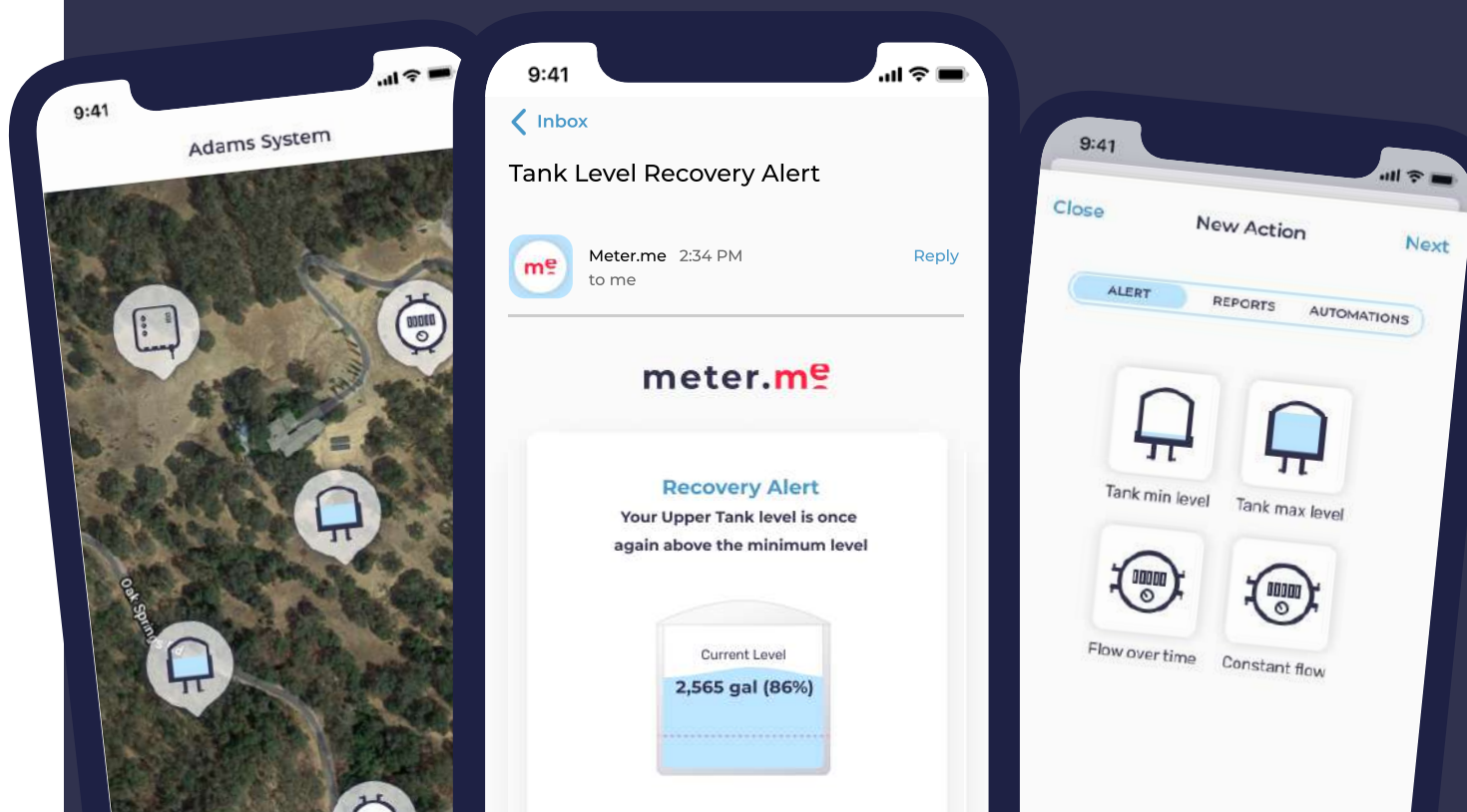
## Mobile Application

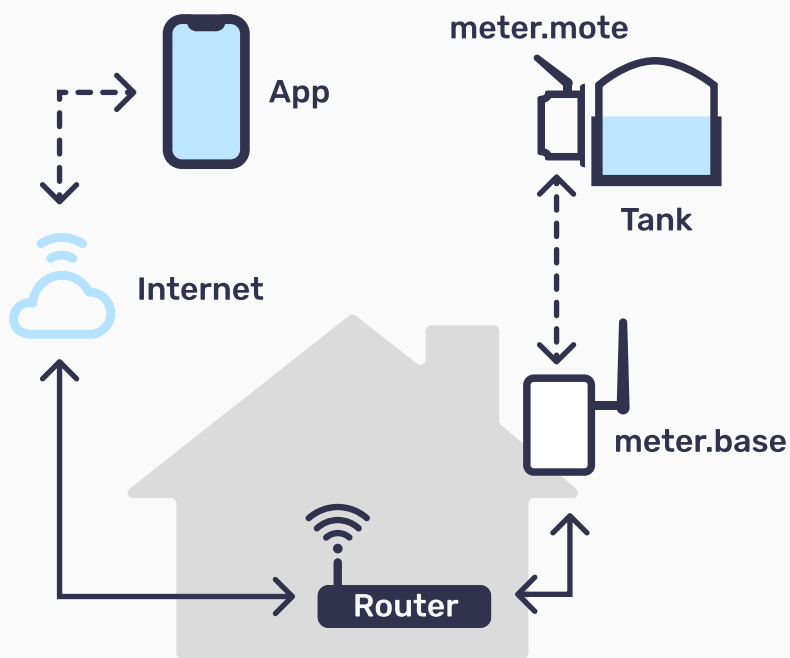
Our mobile application provides remote visibility of your tank levels including:

- View of current & historic tank levels
- In-app and email tank level and system status alerts
- Supported on iOS and Android devices
- System geo-location

## Key Features

- LoRa network connectivity
- Cloud-hosted mobile application
- Remote visibility of tank levels
- Grid & off-grid powered
- Leak detection by patterns & capacity





## Connectivity

We use LoRa network technology for communications between the tank level sensors and the meter.me service platform allowing us to service areas of poor Internet connectivity and no power.

The meter.base (a LoRaWAN gateway) that is deployed with each meter.me installation, facilitates communication between the tank level sensor and the meter.me service platform.

## Equipment

meter.mote



Tank Level Communicator

meter.base



LoRaWAN Gateway

meter.sense



Barometric Pressure Sensor

## Technical Specifications

Operating temperature	-35C to +75C
Power draw	Idle Current 10µA, Transmit Current 130mA
Charge	5V 80mA Solar Panel, 2200mAh battery giving 5+ years depending on working conditions & solar coverage
Regulatory compliance	RAK carries CE Certification and FCC Certification
Connectivity	LoRa US915
LoRa gateway range	Up to 15 km (rural) & 2 km (urban)
Dimensions	L x W 160.27mm x 92.9 mm / 6.3" x 3.6"
Antenna	4.2dBi SMA Whip Style 915Mhz Antenna with female SMA connector
Housing	IP66/IP68 - Dust Tight, Water Resistant, Waterproof
Reporting frequency	2-4 hour standard reporting intervals; reports on change