

Primrose



PROPERTY FEATURES

Spacious Living Room
Built-in Pantry
Convenient Laundry Room
Builder Installed Shower Door
Two-Car Garage
Front Covered Patio
Rear Covered Patio for entertaining
High Efficiency Windows
See back for
Energy Saving Features



Brookfield

The Brookfield South neighborhood is located northwest of Grand Junction off of 21 1/2 Road and H 3/4 Road. Premium location with views of the Monument, Bookcliffs and the Mesa!

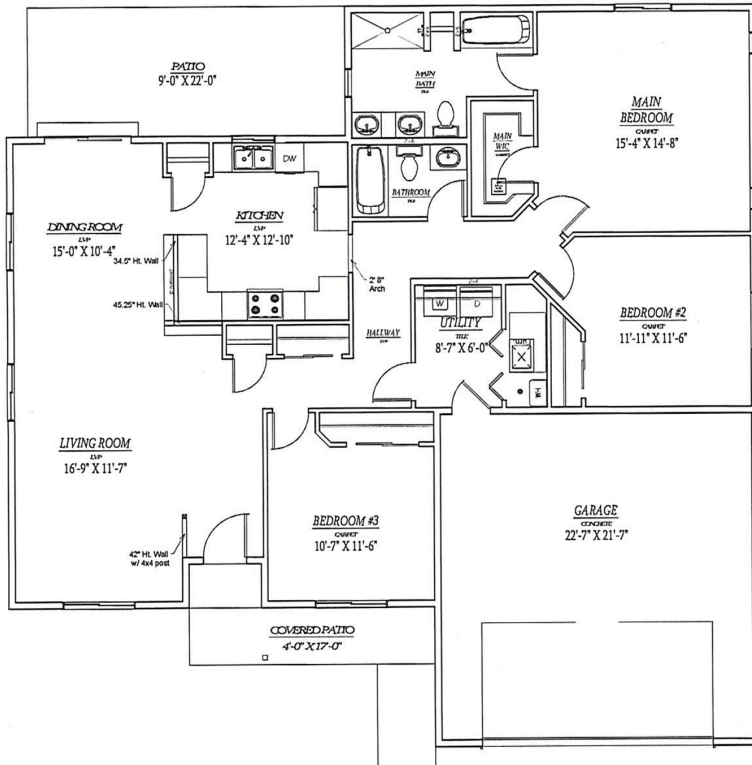
Close to Community Hospital, Shops, Mesa Mall, Dining, Entertainment and a variety of Parks and Trails.

Every home in Brookfield South features all electric energy efficient appliances and mechanicals. Heating, cooling and ventilation all advanced technologically. This is a Zero Energy Ready Home.

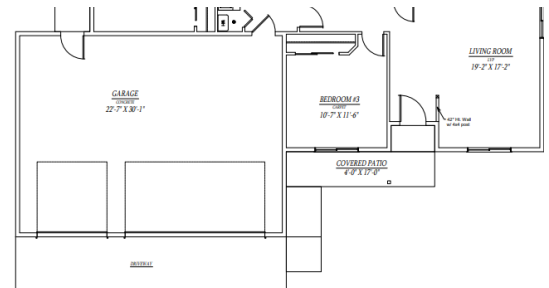
Brookfield South is a community with covenants. Includes pressurized irrigation to lot. HOA Dues TBD. Plans, specs and price subject to change.



Primrose Floor Plan



-  1,651 SF
-  6 kilowatt Solar
-  3 Bedrooms
-  2 Bathrooms
-  2-Car Garage
3-Car option



CALL DIANNE DINNELL
970-235-0902

BROOKFIELD ENERGY SAVING FEATURES

Solar Powered Net-Zero Home

- ENERGY STAR Dishwasher
- Heat Pump Water Heater
- Heat Pump Heating & AC
- Induction Oven & Range
- Conditioned Crawl Space
- 100% LED Lighting
- 6 kilowatt solar array
- Upgrades & Customization Available

