



PROPERTY FEATURES

Upgraded Cabinets
Stainless Steel Appliances
Granite Countertops (Kitchen)
Tile/Luxury Vinyl Plank/Carpet
Satin Nickel or Oil Rubbed
Bronze Hardware
9' ceilings (per plan)
Skip Trowel Drywall Texture
Sheet Rocked and Taped Garage
Stucco Exterior
Xeriscape Landscaping
Back Covered Patio



Canyonview is in NW Grand Junction, located on 23 1/2 Road across G Road from Community Hospital. Close to shops, dining, services, Mesa Mall, Canyon View Park, minutes from the Colorado River and trails.

Canyonview is a community with covenants. HOA Dues TBD. Plans, specs, and pricing subject to change.

ENERGY SAVING FEATURES

- 95% Efficient Furnace
- R-23 Wall Insulation
- R-49 Ceiling Insulation
- Double glazed Low-E Thermal Vinyl Windows
- R-15 Insulated Exterior Doors
- 13 SEER Air Conditioner
- WIFI Programmable Thermostat
- Energy-Efficient Lighting
- ENERGY STAR Appliances
- Advanced Indoor Air Management

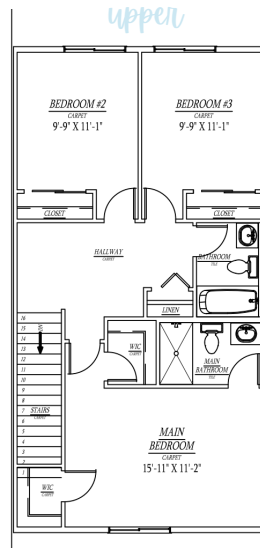
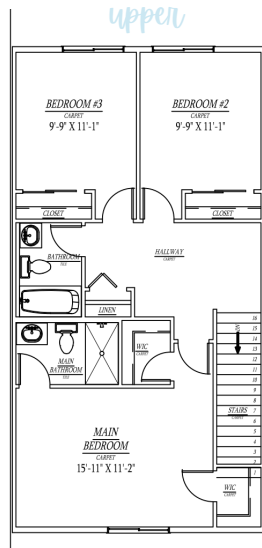
Performance Build Homes

© 2024 Senenergy Builders 970-248-8500



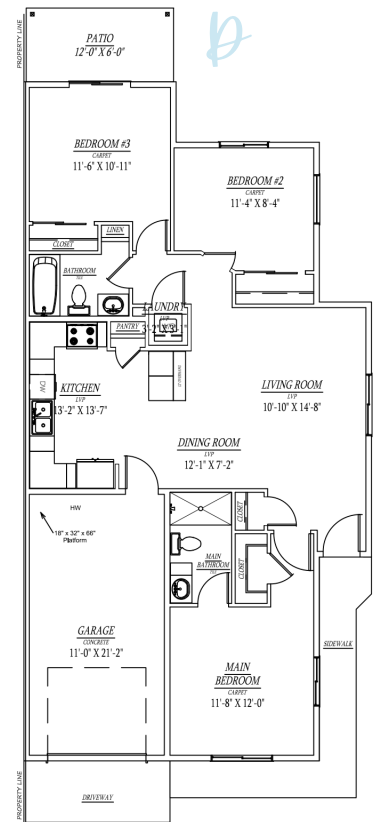
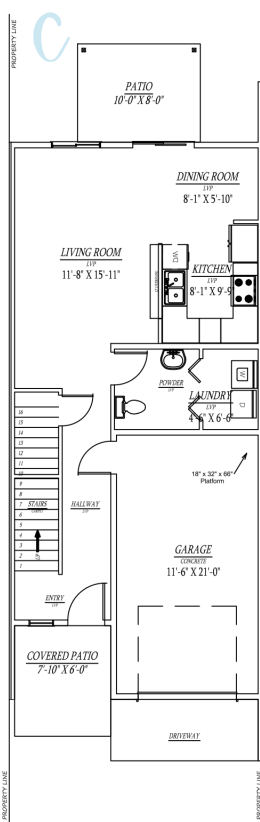
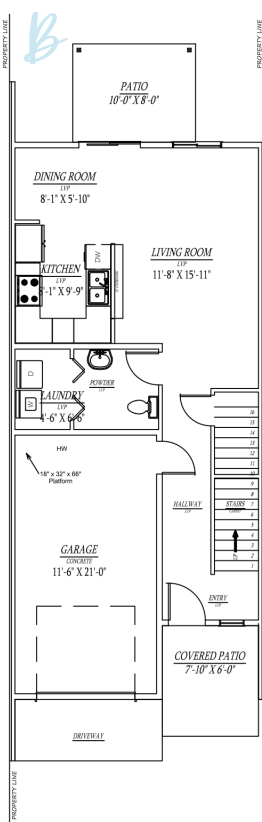
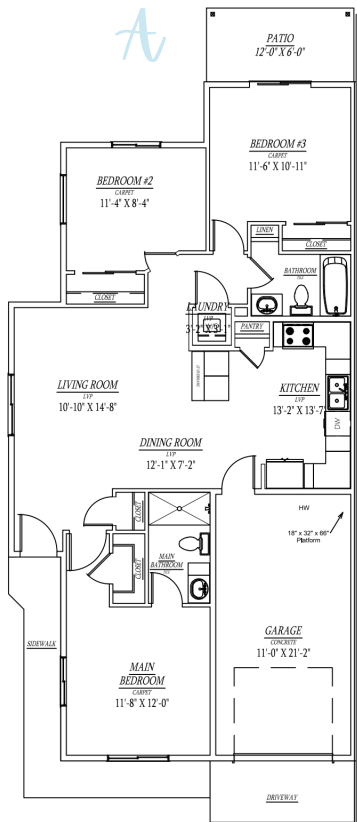
Canyonview Floor Plans

Single Level
Living or
Two-Story



1-Story, Units A & D
1107 SF, 3BR, 2BA
Single Car Garage

2-Story, Units B & C
1376 SF, 3BR, 2.5BA
Single Car Garage



CALL DIANNE DINNEL 970-235-0902