



Blue Mesa



PROPERTY FEATURES

Spacious LivingRoom
Bay Window
Center Island Kitchen
Built-in Pantry
Convenient Laundry/Utility Room
Two-Car Garage
Front Covered Patio
ENERGY STAR Efficiency Standards

Brookfield

The Brookfield South neighborhood is located northwest of Grand Junction off of 21 1/2 Road and H 3/4 Road. Premium location with views of the Monument, Bookcliffs and the Mesa!

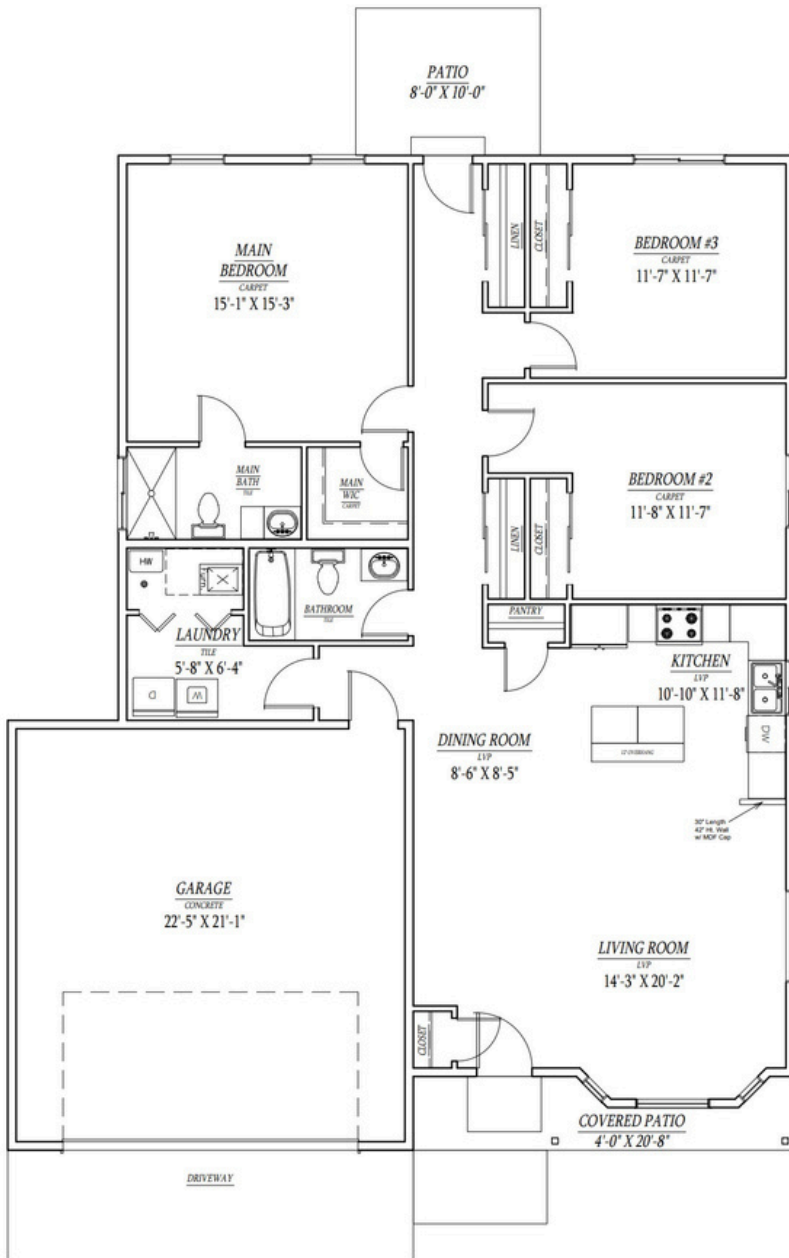
Close to Community Hospital, Shops, Mesa Mall, Dining, Entertainment and a variety of Parks and Trails.

Every home in Brookfield South features all electric energy efficient appliances and mechanicals. Heating, cooling and ventilation all advanced technologically. This is a Zero Energy Ready Home.

Brookfield South is a community with covenants. Includes pressurized irrigation to lot. HOA Dues TBD. Plans, specs and price subject to change.



Blue Mesa Floor Plan



-  1,558 SF
-  6 Kilowatt Solar
-  3 Bedrooms
-  2 Bathrooms
-  2-Car Garage

BROOKFIELD ENERGY SAVING FEATURES

Solar Powered Net-Zero Home

ENERGYSTAR Dishwasher
Heat Pump Water Heater
Heat Pump Heating & AC
Induction Oven & Range
Conditioned Crawl Space
100% LED Lighting
ENERGY STAR Efficiency
6 kilowatt solar array
Upgrades & Customization
Available

CALL SENERGY
970-248-8500

