



Blue Mesa



PROPERTY FEATURES

Spacious Living Room
 Bay Window
 Center Island Kitchen
 Built-in Pantry
 Convenient Laundry/Utility Room
 Two-Car Garage
 Front Covered Patio
 ENERGY STAR Efficiency Standards

Brookfield

The Brookfield South neighborhood is located northwest of Grand Junction off of 21 1/2 Road and H 3/4 Road. Premium location with views of the Monument, Bookcliffs and the Mesa!

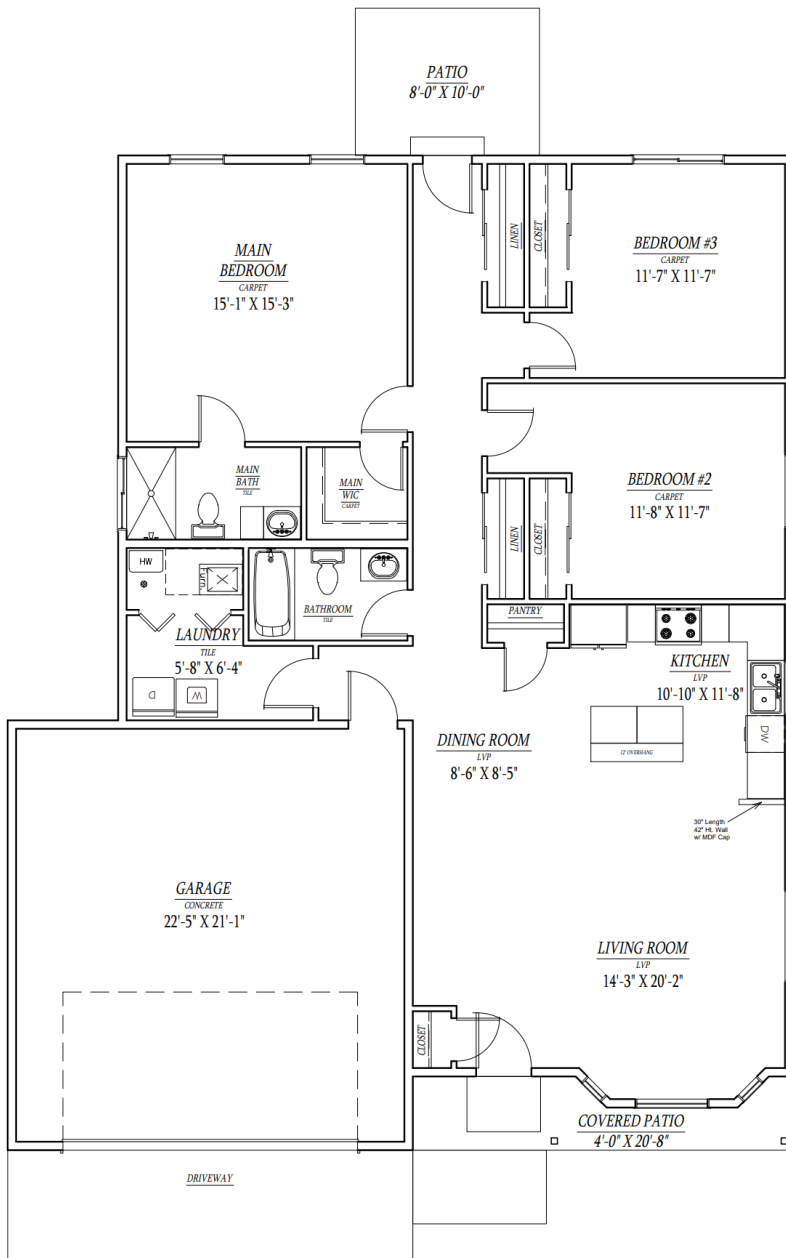
Close to Community Hospital, Shops, Mesa Mall, Dining, Entertainment and a variety of Parks and Trails.

Every home in Brookfield South features all electric energy efficient appliances and mechanicals. Heating, cooling and ventilation all advanced technologically. This is a Zero Energy Ready Home.

Brookfield South is a community with covenants. Includes pressurized irrigation to lot. HOA Dues TBD. Plans, specs and price subject to change.



Blue Mesa Floor Plan



1,558 SF



6 Kilowatt Solar



3 Bedrooms



2 Bathrooms



2-Car Garage

BROOKFIELD ENERGY SAVING FEATURES

Solar Powered Net-Zero Home

ENERGY STAR Dishwasher
Heat Pump Water Heater
Heat Pump Heating & AC
Induction Oven & Range
Conditioned Crawl Space
100% LED Lighting
ENERGY STAR Efficiency
6 kilowatt solar array
Upgrades & Customization
Available

CALL DIANNE DINNEL
970-235-0902

