

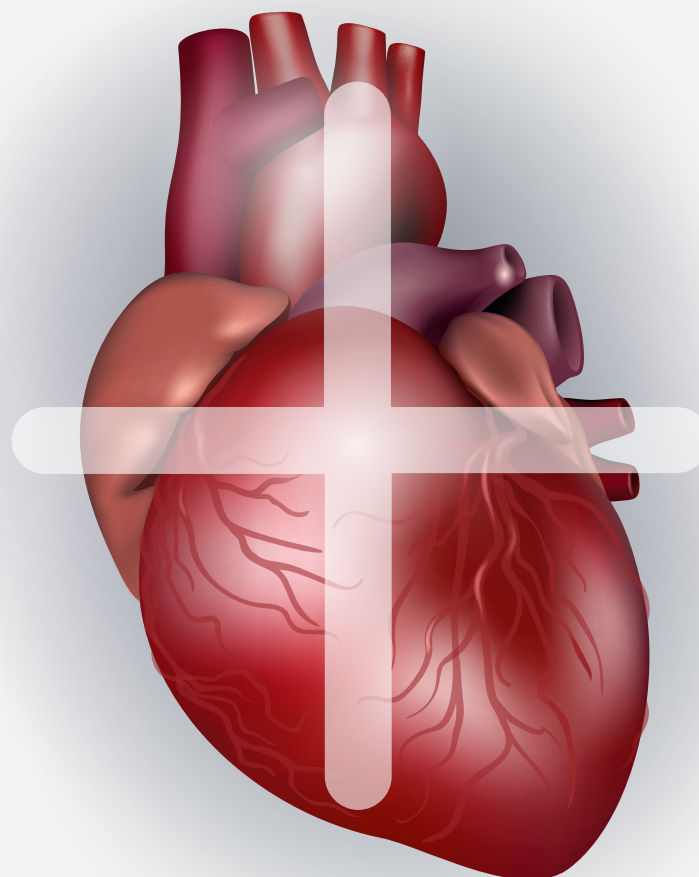
INSTALLATION AND CONFIGURATION GUIDE

DECEMBER 2022

VERSION 2.1

TruPlan™ Computed Tomography (CT) Imaging Software Application

WATCHMAN™ TruPlan™ software is developed and owned by Circle Cardiovascular Imaging Inc. (Calgary, AB, Canada), and Boston Scientific is the exclusive reseller of WATCHMAN™ TruPlan™ software.





01

System Requirements

The minimum system requirements for TruPlan are:

Requirement	Minimum Requirements
Operating System	Windows 10 and 11 64bit / macOS 10.15, 11.x, 12.x
Processor	Intel Core i5 or better (Apple M1 is supported as well)
GPU	Intel HD 620 or better (Dedicated GPU is recommended)
System RAM	8 GB (16 GB Recommended)
Display	1920x1080

It is advised to install the latest GPU driver when using TruPlan.

02

Cyber security & Network Security

To protect the patient information, it is advised to make sure the operating system of the computer is protected with a password and the patient information is stored on an encrypted disk partition.

TruPlan is tested with the security suite of Windows Defender, there are no known limitations.

It is advised to install the latest security updates for the operating system.

TruPlan is not meant as the single storage location of the DICOM data, therefore there are no requirements for making backups of the system.

TruPlan logs errors in the log.txt and user actions regarding patient information in the audit.log, both files can be found in

C:\Users\<username>\AppData\Roaming\Circle Cvi\TruPlan.

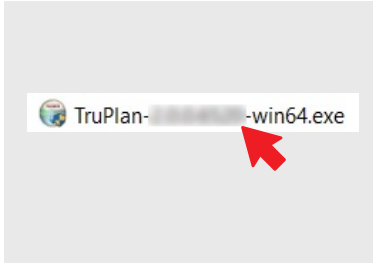


03

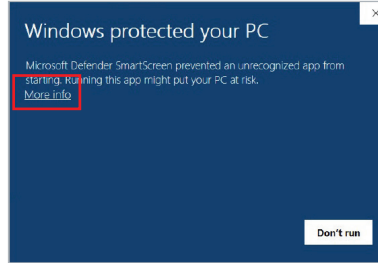
Installation of TruPlan on Windows

WATCHMAN TruPlan software can be downloaded from www.circlecvi.com/watchman-truplan.

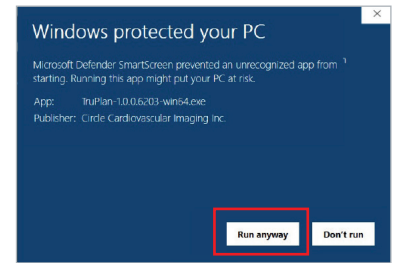
- 1 To start the installation of TruPlan. **Double click the TruPlan icon.**



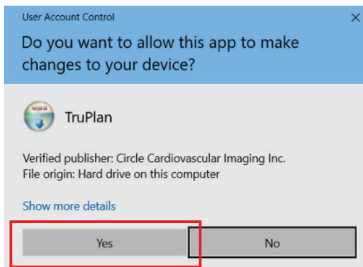
- 2 Windows defender may show this SmartScreen window. **Click on "More info".**



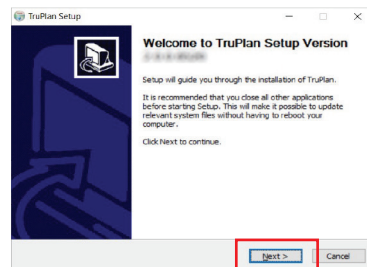
- 3 Click the "Run anyway" button.



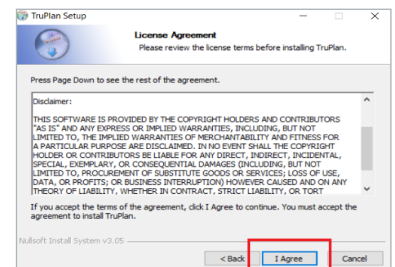
- 4 In the next dialog **click "Yes"** to allow the setup to start.



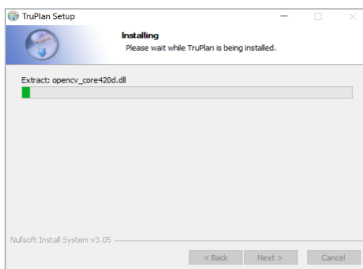
- 5 Select "Next" in the welcome screen.



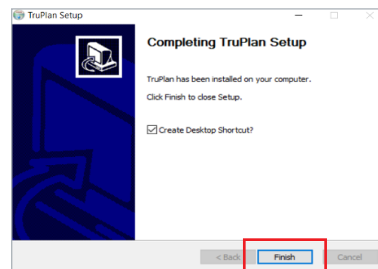
- 6 Press "I agree" in the license agreement dialog.



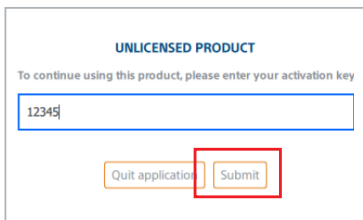
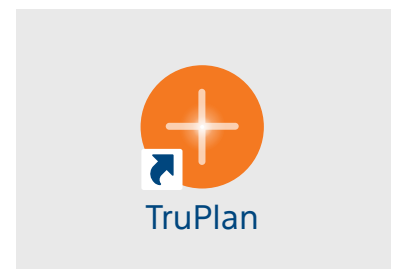
- 7 Wait for the installer to finish installing the software.



- 8 Press "Finish" to complete.



- 9 When selected, the installer will create a shortcut on the desktop.



The TruPlan installer installs an open-source, lightweight DICOM server called Orthanc to handle the studies. (<https://www.orthanc-server.com/>)

When starting the application, a license check is performed, when the product is not licensed, the license dialog will pop up.

Enter the license key in this dialog and press "Submit".

To validate the license the system needs an active internet connection. When the license fails an error will be shown, in that case check the internet connection and whether the correct license key has been entered.

The generated license file will be stored as HV.lic in C:\ProgramData\Circle Cvi\TruPlan

Un-installing TruPlan

Open the Apps & Features page of Windows (Select Start > Settings > Apps > Apps & features)

From the list of installed applications, select TruPlan, and select Uninstall. Follow the instructions in the uninstall wizard till the Application is removed.

Repeat these steps for Orthanc. To remove all patient data, delete the Orthanc storage directory, typically C:\Orthan

05

Configuration options

Open the configuration dialog by clicking the gear icon in the bottom left corner of the application.

TEST PAT1

Patient ID

Description

Study date

TEST PAT1

Patient ID

Description

Study date

TEST PAT1

Patient ID

Description

Study date

TEST PAT1

Patient ID

Description

Study date

TEST PAT1

Patient ID

Description

Study date

TEST PAT1

Patient ID

Description

Study date

Access Sheaths:

☒ TrueSeal
☐ FID

Configuration file path:

Files\Orthanc Server\Configuration\orthanc.json

Storage directory:

C:\Orthanc

DICOM port:

8242

DICOM AET:

TRUPLAN

DICOM nodes:

Name	AE title	IP address	Port
PACS	CONQUESTSRV1	127.0.0.1	5478
Test	test	127.0.0.1	123

Automatically send saved sessions to:

Name

New DICOM node

Save DICOM node

Save

Most of the settings require administrative privileges, to change those start TruPlan using the option "Run as administrator".

Configuration option	Description
Enable WATCHMAN	Enables the WATCHMAN device overlays in the fluoro workflow and the WATCHMAN sizing table. WATCHMAN FLX will always be available
Access Sheaths	Switch between TruSeal and FXD access sheaths
Configuration file path	Path to the Orthanc.json file that contains some configuration options (Do not change)
DICOM port	Port used for DICOM communication. E.g with a PACS
Storage directory	The location where TruPlan stores it studies
DICOM AET	AE title is used for DICOM communication. Each TruPlan system connected to the same PACS needs a different AE title
DICOM nodes	Click new to add a new DICOM node and fill in the fields. Use the Test Echo option to perform a DICOM echo. (On the PACS the IP address, DICOM port and AE title of the TruPlan system needs to be added.)
Automatically send saved sessions to	Each time a user saves a session in the application, this session will automatically be sent to the selected remote system

CONFIGURE THE WINDOWS FIREWALL (TO ALLOW IMPORTING FROM PACS)

To make sure the incoming connections are not blocked by the local firewall add an exception for the Orthanc service to the local firewall.

Open the firewall configuration.

Select "New Rule", set the radio button to "Program" and press "Next".

Add the path to Orthancservice.exe and press "Next".

Programs

Specify the full program path and executable name of the program that this rule matches.

Tab:

- Rule Type
- Programs**
- Action
- Profile
- Name

Does this rule apply to all programs or a specific program?

☐ All programs
Match a collection of connections on the computer that match other rule properties.

☒ This program path:

%ProgramFiles%\Common-Service\OracleService.exe

Example: c:\path\program.exe
%ProgramFiles%\Common-Service.exe

« Back **Next >** Cancel

Make sure the option "Allow the Connection" is enabled and press next.

Typically, domain should be enabled.
Press "Finish" to close the wizard.

④ Allow the connection
This includes connections that are protected with IPsec as well as those are not.

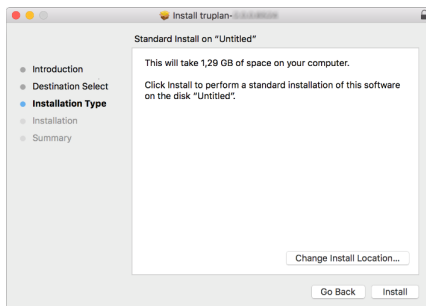
When does this rule apply?

- ☒ **Domain**
Applies when a computer is connected to its corporate domain.
- ☒ **Private**
Applies when a computer is connected to a private network location, such as a home or work place.
- ☒ **Public**
Applies when a computer is connected to a public network location.

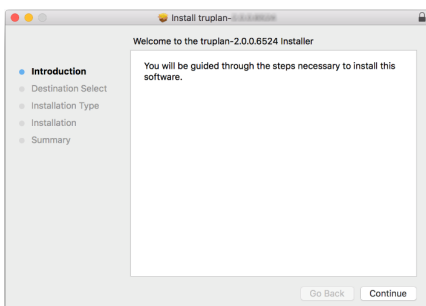
06

MacOS specific

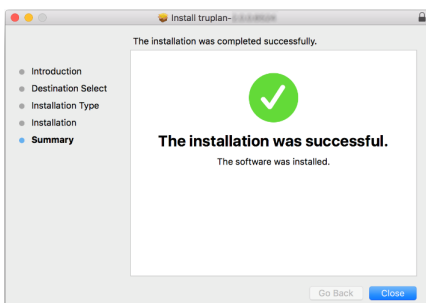
- 1 To install TruPlan on macOS.
Double click the truplan pkg icon and click "Install"



- 2 follow the on-screen instructions
Click "Continue"



- 3 Press "Close" to complete.



Path to log files and license file: /Users/<logged on user>/Library/
Application Support/Circle Cvi/TruPlan

To uninstall, locate TruPlan in the Finder, and move it to the Trash.

Configuration works as described in section 5.

07

Technical Support

For technical questions please contact our team by phone or e-mail:

North America

Circle Cardiovascular Imaging Inc.
1100, 800 5th Avenue SW Calgary
Alberta, Canada, T2P 3T6
P: +1 403 338 1870
F: +1 403 338 1895

Europe

Circle Cardiovascular Imaging B.V.
P: + 31 (800)265 8982

Report a problem: support@circlecvi.com

Website: www.circlecvi.com